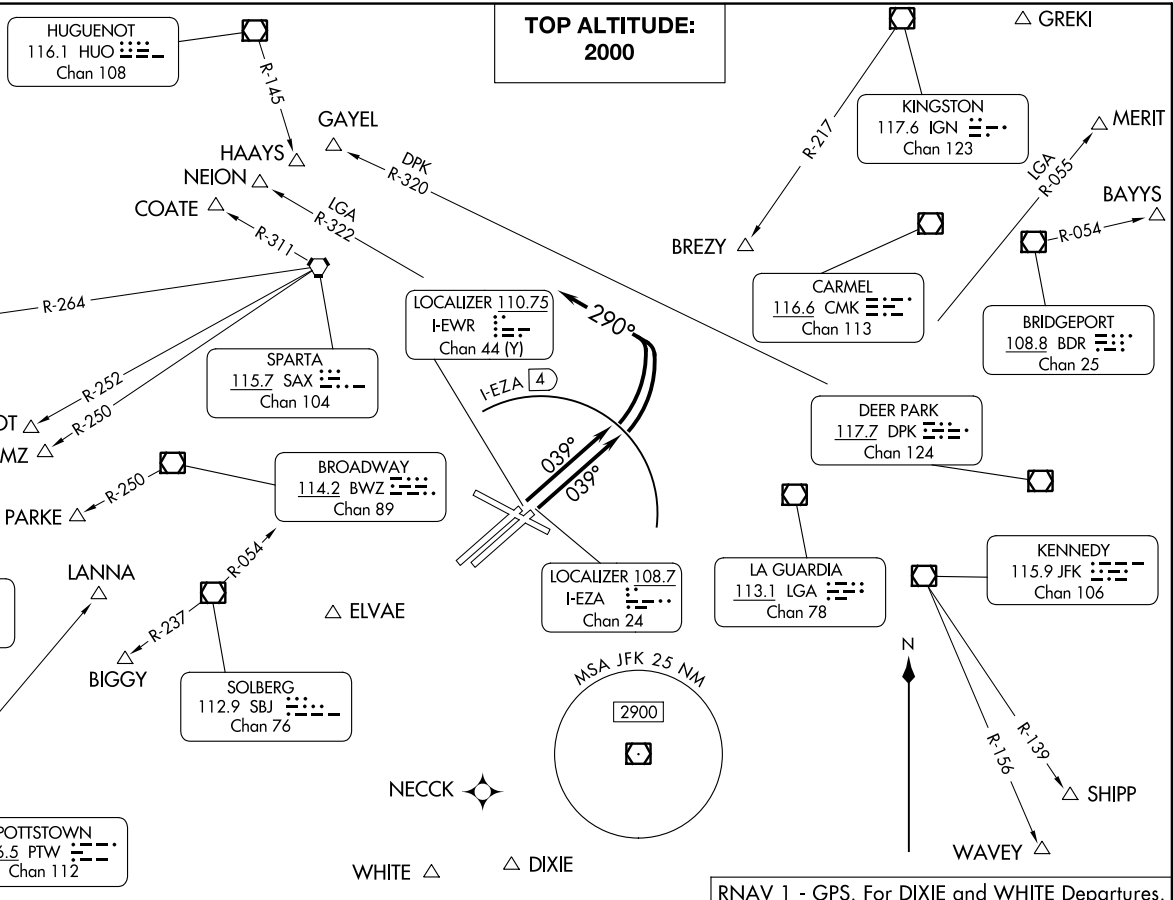


DEVIL ONE DEPARTURE
(DEVIL1.EWR) 30NOV23
NEWARK, NEW JERSEY
NEWARK LIBERTY INTL (EWR)

NEW YORK DEP CON
119.2 379.9
D-ATIS
134.825
CLNC DEL 118.85
CPDLC
GND CON 121.8
NEWARK TOWER
118.3 257.6



TOP ALTITUDE:
2000

RNAV 1 - GPS. For DIXIE and WHITE Departures.
RADAR and DME required.

(NARRATIVE ON FOLLOWING PAGE)

(DEVIL1.EWR) 23334
DEVIL ONE DEPARTURE
A1-285 (FAA)
NEWARK LIBERTY INTL (EWR)
NEWARK, NEW JERSEY

DEVIL ONE DEPARTURE

AL-285 (FAA)

NEWARK, NEW JERSEY



DEPARTURE ROUTE DESCRIPTION

TAKEOFF RUNWAY 4L/R: Climb on heading 039° until I-EZA 4 DME (use I-EWR 3.6 DME when I-EZA is NA), then climbing left to turn heading 290°, maintain 2000, thence....

...as per notes or for RADAR vectors to assigned route/fix. Expect clearance to filed altitude/flight level ten (10) minutes after departure. Thence....

LOST COMMUNICATIONS: For aircraft proceeding to COATE, NEION, HAAYS, GAYEL, or BREZY, if radio contact lost/not established with ATC, climb to 3000 after SBJ R-054.

NOTE: Rwy 4L/R, simultaneous reception of EWR ILS/DME required.

Depart Rwy 4L/R

Expect RADAR VECTORS to:

DP FIX	
BAYYS	BDR/BDR R-054
BIGGY	SBJ /SBJ R-237
BREZY	IGN R-217 to BREZY
COATE	SAX/SAX R-311
DIXIE	ELVAE/NECCK
ELIOT	SAX R-252
GAYEL	DPK R-320
HAAYS	HUO
LANNA	PTW R-059
MERIT	LGA R-055
NEION	LGA R-322
NEWEL	SAX/SAX R-264
PARKE	BWZ R-250
SHIPP	JFK/JFK R-139
WAVEY	JFK/JFK R-156
WHITE	ELVAE/NECCK
ZIMMZ	SAX R-250

NOTE: ELIOT may be accessed by all types of aircraft requesting a final altitude of 14000 or 16000.

NOTE: NEWEL may be accessed by turbo jet aircraft only requesting a final altitude at or above FL180.

NOTE: ZIMMZ may be accessed by all types of aircraft requesting a final altitude at or above FL180.

TAKEOFF MINIMUMS:

Rwy 4L: Standard with minimum climb of 365'/NM to 800.

Rwy 4R: Standard with minimum climb of 345'/NM to 800.

NE-2, 22 FEB 2024 to 21 MAR 2024

NE-2, 22 FEB 2024 to 21 MAR 2024

(LIB5, LIB) 10SEP20

LIBERTY FIVE DEPARTURE

D-ATIS
115.7 134.825
CLNC DEL
118.85
CPDLC
GND CON
121.8
NEWARK TOWER
118.3 257.6
NEW YORK DEP CON
119.2 379.9

HUGUENOT
116.1 HUO
Chan 108
N41°24.58'-W74°35.50'
L-33-34, H-10-12

GAYEL
N41°24.40'
W74°21.43'
L-33-34, H-10-12

KINGSTON
117.6 IGN
Chan 123
N41°39.93'-W73°49.33'
L-33-34, H-10-12

TOP ALTITUDE:
2500

CARMEL
116.6 CMK
Chan 113
N41°16.81'-W73°34.88'
L-33-34, H-10-12

COATE
N41°08.17'
W74°41.71'
L-33-34, H-10-12

NEION
N41°13.69'
W74°34.85'
L-33-34, H-10-12

HAAYS
N41°19.20'
W74°28.03'
L-33-34

BREZY
N41°09.50'
W74°08.09'
L-33-34

MERIT
N41°22.92'
W73°08.25'
L-33-34
H-10-12

BRIDGEPORT
108.8 BDR
Chan 25
N41°09.64'-W73°07.47'
L-33-34, H-10-12

EAST TEXAS
110.2 ETX
Chan 39
N40°34.86'-W75°41.04'
L-30-34, H-10-12

ELIOT
N40°49.11'
W75°07.81'
L-33-34, H-10-12

SPARTA
115.7 SAX
Chan 104
N41°04.05'-W74°32.30'
L-33-34, H-10-12

LA GUARDIA
113.1 LGA
Chan 78
N40°47.02'-W73°52.12'
L-33-34, H-10-12

BAYYS
N41°17.35'
W72°58.28'
L-33-34
H-10-12

NEWEL
N40°55.32'
W75°10.25'
H-10-12

ZIMMZ
N40°48.18'
W75°07.42'
H-10-12

COLTS NECK
115.4 COL
Chan 101
N40°18.70'-W74°09.58'
L-34, H-10-12

DEER PARK
117.7 DPK
Chan 124
N40°47.50'-W73°18.22'
L-33-34, H-10-12

PARKE
N40°40.99'
W75°04.59'
L-33-34, H-10-12

BROADWAY
114.2 BWZ
Chan 89
N40°47.91'-W74°49.31'
L-33-34, H-10-12

KENNEDY
115.9 JFK
Chan 106
N40°37.97'-W73°46.28'
L-33-34, H-10-12

LANNA
N40°33.58'
W75°01.66'
L-33-34, H-10-12

BIGGY
N40°25.18'
W74°58.36'
L-33-34, H-10-12

SOLBERG
112.9 SBJ
Chan 76
N40°34.98'-W74°44.51'
L-33-34, H-10-12

ELVAE
N40°32.78'
W74°16.58'
L-33-34

DIXIE
N40°05.96'
W74°09.87'
L-34

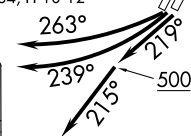
WAVEY
N40°14.08'
W73°23.66'
L-34

POTTSTOWN
116.5 PTW
Chan 112
N40°13.33'-W75°33.62'
L-34, H-10-12

WHITE
N40°00.41'
W74°15.08'
L-34, H-10-12

NOTE: RADAR required.

NOTE: Chart not to scale.



TAKEOFF MINIMUMS:
Rwys 4L, 4R, 11, 29: NA-ATC.
Rwy 22L: Standard with minimum
climb of 255' per NM to 2300.
Rwy 22R: Standard with minimum
climb of 250' per NM to 2300.

(NARRATIVE ON FOLLOWING PAGE)

NEWARK, NEW JERSEY
NEWARK LIBERTY INTL (EWR)

(LIB5, LIB) 22335

LIBERTY FIVE DEPARTURE

AI-285 (FAA)

NEWARK LIBERTY INTL (EWR)
NEWARK, NEW JERSEY



DEPARTURE ROUTE DESCRIPTION

TURNPIKE CLIMB: Climb on heading 219° to 500, then climb heading 215°, or as assigned by ATC, thence....

PARKWAY CLIMB: Climbing right turn to heading 239°, or as assigned by ATC, thence....

BUD CLIMB: Climbing right turn on heading 263°, or as assigned by ATC, thence....

....expect radar vectors to assigned route/fix. Maintain 2500. Expect clearance to filed altitude/flight level within 10 minutes after departure.

LOST COMMUNICATIONS: For aircraft proceeding to COATE, NEION, HAAYS, GAYEL, or BREZY, if radio contact lost/not established with ATC, climb to 3000' after SBJ R-047.

NOTE: Rwy 22L/R Departures:

NOTE: BAYYS departures expect vectors to BDR/BDR R-054.

NOTE: BIGGY departures expect vectors to SBJ/SBJ R-237.

NOTE: BREZY departures expect vectors to IGN R-217 to BREZY.

NOTE: COATE departures expect vectors to SAX/SAX R-311.

NOTE: ELIOT departures expect vectors to SAX R-252 between 2300 and 0700 local.

ELIOT departures expect vectors to SBJ or ETX. ELIOT may be accessed by all type aircraft requesting final altitude of 14000 or 16000.

NOTE: GAYEL departures expect vectors to DPK R-320.

NOTE: HAAYS departures expect vectors to HUO.

NOTE: LANNA departures expect vectors to SBJ/SBJ R-274.

NOTE: MERIT departures expect vectors to LGA R-055.

NOTE: NEION departures expect vectors to LGA R-322.

NOTE: NEWEL departures expect vectors to SAX R-264. NEWEL may be accessed by turbojet aircraft only requesting a final altitude at or above FL180.

NOTE: PARKE departures expect vectors to SBJ/SBJ R-302.

NOTE: WAVEY departures expect vectors to JFK/JFK R-156.

NOTE: WHITE/DIXIE departures expect vectors to COL R-350 or ELVAE/COL thence to WHITE on COL R-204 or to DIXIE on COL R-192.

NOTE: ZIMMZ departures expect vectors to SAX R-250. ZIMMZ may be accessed by all type of aircraft requesting a final altitude at or above FL180.

NE-2, 22 FEB 2024 to 21 MAR 2024

NE-2, 22 FEB 2024 to 21 MAR 2024



DEPARTURE ROUTE DESCRIPTION

TAKEOFF RUNWAY 4L/R: Climb on heading 039° to 500, then climbing right turn to heading 055° to I-EZA 4 DME (use I-EWR 3.6 DME when I-EZA is NA), then climbing left turn to heading 290°, cross TEB R-214 westbound at or above 2500, climb and maintain 3000, thence....

TAKEOFF RUNWAY 11: Climbing left turn on heading 060° to I-EZA 4 DME (use I-EWR 3.6 DME when I-EZA is NA), then climbing left turn to heading 290°, cross TEB R-214 westbound at or above 2500, climb and maintain 3000, thence....

TAKEOFF RUNWAY 22L: Climb on heading 219° to 500, then climbing left turn to heading 190° to I-LSQ 2.3 DME (use I-JNN 2.8 DME when I-LSQ is NA), then climbing right turn to heading 220°, maintain 2500, thence....

TAKEOFF RUNWAY 22R: Climbing left turn on heading 190° to I-LSQ 2.3 DME (use I-JNN 2.8 DME when I-LSQ is NA), then climbing right turn to heading 220°, maintain 2500, thence....

TAKEOFF RUNWAY 29: Climb on heading 288° to I-GPR 1.4 DME, then climbing left turn to heading 265°, maintain 3000, thence....

....as per notes or for RADAR vectors to assigned route/fix. Expect clearance to filed altitude/flight level ten (10) minutes after departure.

All Aircraft: ATC climb gradients: If unable to accept climb rates advise ATC prior to taxi.
Rwy 4L/R/11: ATC climb of 500' /NM to 2500.
Rwy 22L: ATC climb of 500' /NM to 600.
Rwy 22R/29: ATC climb of 500' /NM to 500.

LOST COMMUNICATIONS: For aircraft proceeding to COATE, NEION, HAAYS, GAYEL, or BREZY, if radio contact lost/not established with ATC, climb to 3000 after SBJ R-047.

(NOTES CONTINUED ON FOLLOWING PAGE)

NE-2, 22 FEB 2024 to 21 MAR 2024

NE-2, 22 FEB 2024 to 21 MAR 2024

(NOTES CONTINUED)

NOTE: Rwy 4L/R, 11 simultaneous reception of EWR ILS/DME required.

NOTE: Rwy 22L/R westbound departures expect RADAR vectors between 5 and 8 NM.

	Depart Rwy 4L/R	Depart Rwy 22L/R
	<u>Expect RADAR VECTORS to:</u>	<u>Expect RADAR VECTORS to:</u>
DP FIX		
BAYYS	BDR/BDR R-054	BDR/BDR R-054
BIGGY	SBJ /SBJ R-237	SBJ /SBJ R-237
BREZY	IGN R-217 to BREZY	IGN R-217 to BREZY
COATE	SAX/SAX R-311	SAX/SAX R-311
DIXIE	ELVAE/NECCK	ELVAE/NECCK
ELIOT	SAX R-252	ETX (2300L-0700L SBJ/ETX)
GAYEL	DPK R-320	DPK R-320
HAAYS	HUO	HUO
LANNA	PTW R-059	SBJ /SBJ R-274
MERIT	LGA R-055	LGA R-055
NEION	LGA R-322	LGA R-322
NEWEL	SAX/SAX R-264	SAX/SAX R-264
PARKE	BWZ R-250	SBJ /SBJ R-302
SHIPP	JFK/JFK R-139	JFK/JFK R-139
WAVEY	JFK/JFK R-156	JFK/JFK R-156
WHITE	ELVAE/NECCK	ELVAE/NECCK
ZIMMZ	SAX R-250	SBJ /SBJ R-317

NOTE: ELIOT may be accessed by all types of aircraft requesting a final altitude of 14000 or 16000.

NOTE: NEWEL may be accessed by turbo jet aircraft only requesting a final altitude at or above FL180.

NOTE: ZIMMZ may be accessed by all types of aircraft requesting a final altitude at or above FL180.

TAKEOFF MINIMUMS:

- Rwy 4L: Standard with minimum climb of 365'/NM to 800.
- Rwy 4R: Standard with minimum climb of 345'/NM to 900.
- Rwy 11: Standard with minimum climb of 250'/NM to 2000.
- Rwy 22L: Standard with minimum climb of 450'/NM to 700.
- Rwy 22R: Standard with minimum climb of 225'/NM to 500.
- Rwy 29: Standard with minimum climb of 455'/NM to 500.

NE-2, 22 FEB 2024 to 21 MAR 2024

NE-2, 22 FEB 2024 to 21 MAR 2024

PORTT FOUR DEPARTURE (RNAV)
(PORTT4.PORTT) 29MAR18

NEWARK LIBERTY INTL (E/W/R)
NEWARK, NEW JERSEY

D-ATIS
134.825
CLNC DEL
118.85
CPDLC
GND CON
121.8
NEWARK TOWER
118.3 257.6
NEW YORK DEP CON
119.2 379.9

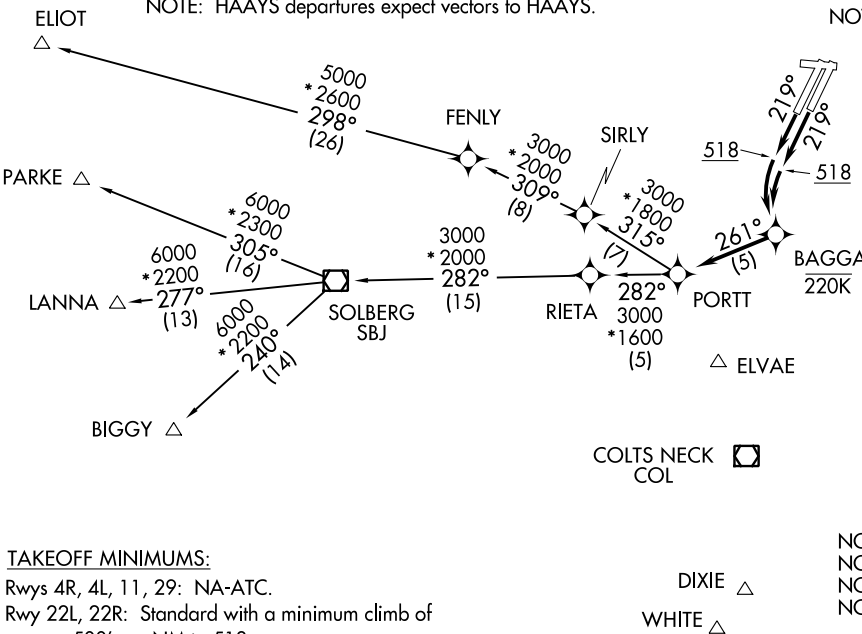
NOTE: Chart not to scale.

**TOP ALTITUDE:
2500**

NOTE: COATE departures expect vectors to BDR VOR/DME direct COATE.
NOTE: HAAYS departures expect vectors to HAAYS.

NOTE: BAYYS departure expect vectors to BDR VOR/DME direct BAYYS.
NOTE: GREKI departures expect vectors to CMK VOR/DME direct GREKI.
NOTE: MERIT departures expect vectors to LGA VOR/DME direct MERIT.

NOTE: DIXIE departures expect vectors to ELVAE direct COL VOR/DME direct DIXIE.
NOTE: WAVEY departures expect vectors to JFK VOR/DME direct WAVEY.
NOTE: WHITE departures expect vectors to ELVAE direct COL VOR/DME direct WHITE.



TAKEOFF MINIMUMS:

Rwys 4R, 4L, 11, 29: NA-ATC.

Rwy 22L, 22R: Standard with a minimum climb of 500' per NM to 518.

(NARRATIVE ON FOLLOWING PAGE)

PORTT FOUR DEPARTURE (RNAV)
(PORTT4.PORTT) 23110

NEWARK LIBERTY INTL (E/W/R)
NEWARK, NEW JERSEY

A1-285 (FAA)

PORTT FOUR DEPARTURE (RNAV)



DEPARTURE ROUTE DESCRIPTION

TAKEOFF RUNWAYS 22L/22R: Climb heading 219° to 518, then left turn direct BAGGA, then on depicted route to PORTT, thence

. . . . on assigned transition, or on vectors to assigned departure fix, maintain 2500. Expect clearance to filed altitude/flight level within 10 minutes after departure.

BIGGY TRANSITION (PORTT4.BIGGY):

ELIOT TRANSITION (PORTT4.ELIOT):

LANNA TRANSITION (PORTT4.LANNA):

PARKE TRANSITION (PORTT4.PARKE):

NE-2, 22 FEB 2024 to 21 MAR 2024

NE-2, 22 FEB 2024 to 21 MAR 2024