

WAAS CH 97707 W12A	APP CRS 119°	Rwy Idg TDZE Apt Elev	5500 2431 2432
--	------------------------	-----------------------------	---

RNAV (GPS) RWY 12

CALDWELL EXEC (EUL)

RNP APCH-GPS.

Procedure NA at night. Rwy 12 helicopter visibility reduction below 1 SM NA.

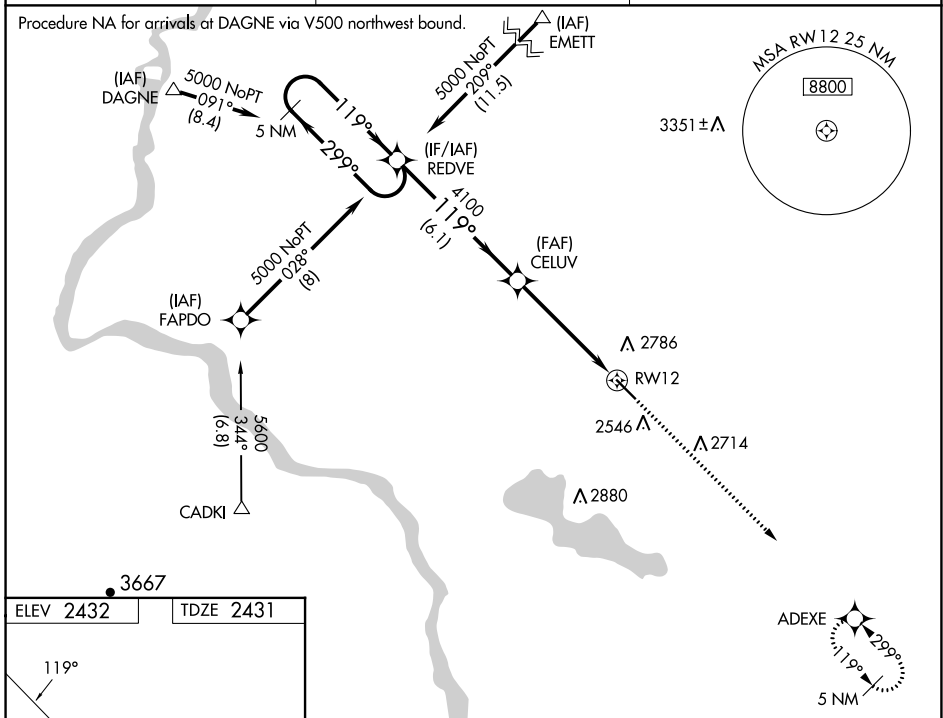
Baro-VNAV NA when using Boise altimeter setting. For uncompensated Baro-VNAV systems, LNAV/VNAV NA below -19°C or above 44°C. When local altimeter setting not received, use Boise altimeter setting and increase all DA/MDA 120 feet and all visibilities ½ mile.

MISSED APPROACH: Climb to 5000 direct ADEXE and hold.

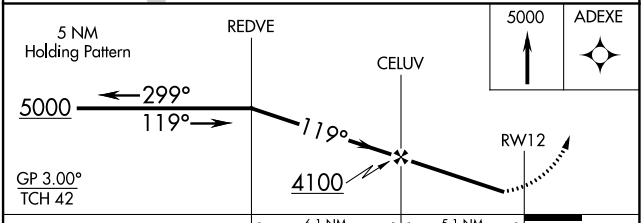
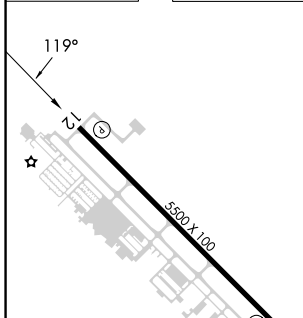
AWOS-3PT
135.075

BIG SKY APP CON
119.6 269.4

UNICOM
123.0 (CTAF) 0



ELEV 2432	TDZE 2431
-----------	-----------



CATEGORY	A	B	C	D
LPV DA	2700-1 269 (300-1)			
LNAV/VNAV DA	2994-2 563 (600-2)			
LNAV MDA	2840-1	409 (500-1)	2840-1½	409 (500-1½)

NW-1, 22 FEB 2024 to 21 MAR 2024

NW-1, 22 FEB 2024 to 21 MAR 2024

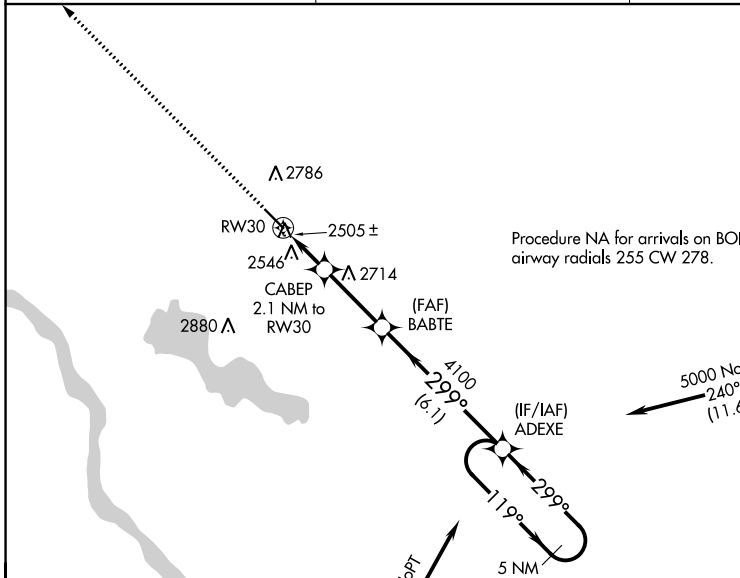
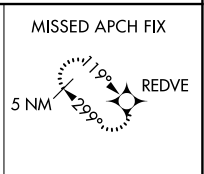
WAAS CH 73007 W30A	APP CRS 299°	Rwy ldg TDZE Apt Elev	5500 2432 2432
--	------------------------	-----------------------------	---

RNAV (GPS) RWY 30

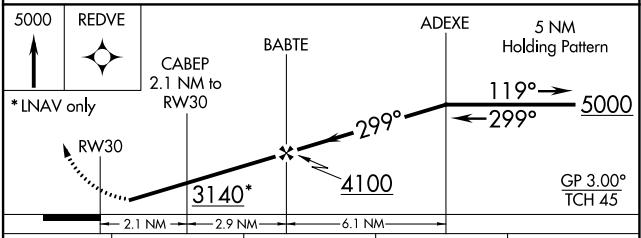
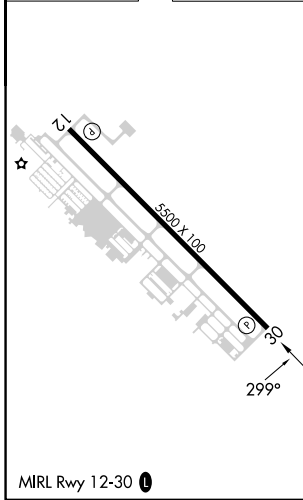
CALDWELL EXEC (EUL)

RNP APCH.	<p>⚠ Rwy 30 helicopter visibility reduction below 3/4 SM NA. Baro-VNAV NA when using Boise altimeter setting. For uncompensated Baro-VNAV systems, LNAV/VNAV NA below -19°C or above 44°C. When local altimeter setting not received, use Boise altimeter setting and increase all DA/MDA 120 feet and all visibilities 1/2 mile.</p>	<p>MISSED APPROACH: Climb to 5000 direct REDVE and hold.</p>

AWOS-3PT 135.075	BIG SKY APP CON 119.6 269.4	UNICOM 123.0 (CTAF) 📻
----------------------------	---------------------------------------	--



ELEV 2432	TDZE 2432
-----------	-----------



CATEGORY	A	B	C	D
LPV DA	2687-1 255 (300-1)			
LNAV/VNAV DA	2822-1 1/4 390 (400-1 1/4)			
LNAV MDA	2880-1 448 (500-1)	2880-1 3/8 448 (500-1 3/8)		2880-1 1/2 448 (500-1 1/2)

NW-1, 22 FEB 2024 to 21 MAR 2024

NW-1, 22 FEB 2024 to 21 MAR 2024