

LOC I-ERV 109.1	APP CRS 305°	Rwy Idg 5300
		TDZE 1589
		Apt Elev 1617

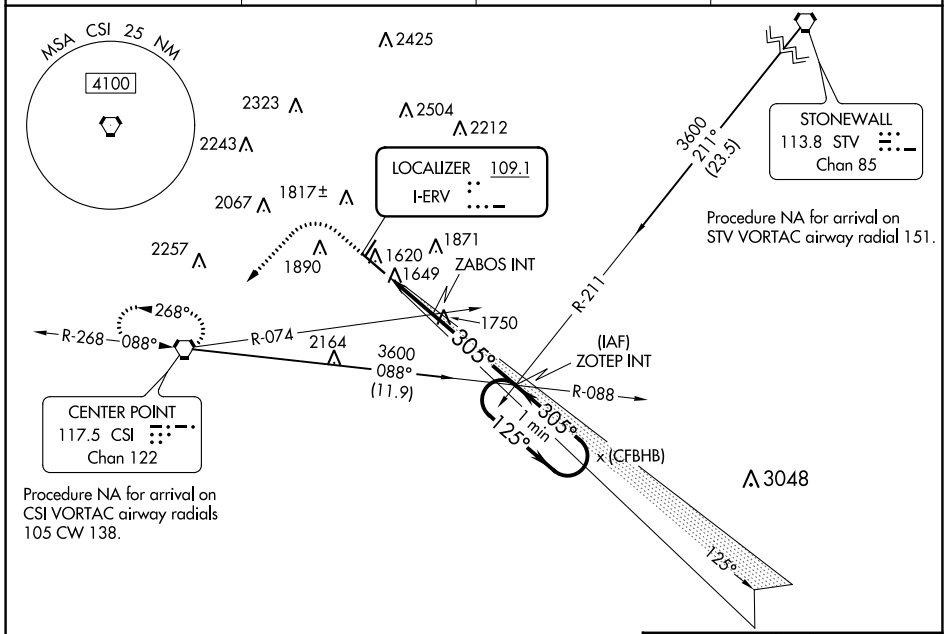
LOC RWY 30

KERRVILLE MUNI/LOUIS SCHREINER FLD (ERV)

▼
▲ NA

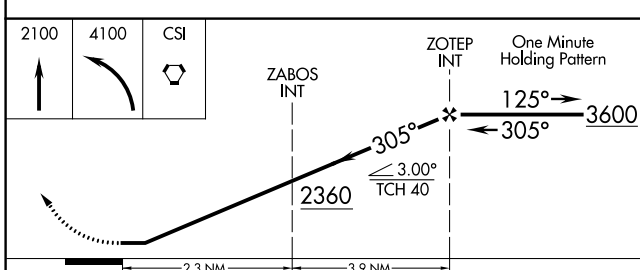
MISSED APPROACH: Climb to 2100 then climbing left turn to 4100 direct CSI VORTAC and hold, continue climb-in-hold to 4100.

AWOS-3 118.125	HOUSTON CENTER 134.95 269.4	CLNC DEL 134.95	UNICOM 122.7 (CTAF) ①
--------------------------	---------------------------------------	---------------------------	---------------------------------



SC-3, 22 FEB 2024 to 21 MAR 2024

SC-3, 22 FEB 2024 to 21 MAR 2024



CATEGORY	A	B	C	D
S-30	2360-1 771 (800-1)	2360-1¼ 771 (800-1¼)	2360-2½ 771 (800-2½)	771 (800-2½)
C CIRCLING	2360-1 743 (800-1)	2360-1¼ 743 (800-1¼)	2380-2½ 763 (800-2½)	2540-3 923 (1000-3)
ZABOS FIX MINIMUMS (DUAL VOR RECEIVERS REQUIRED)				
S-30	1900-1 311 (300-1)			
C CIRCLING	2260-1 643 (700-1)	2340-1 723 (800-1)	2380-2¼ 763 (800-2¼)	2540-3 923 (1000-3)

ELEV 1617 **D** TDZE 1589

REIL Rwy 12 and 30 ①
MIRL Rwy 3-21 and 12-30 ①

FAF to MAP 6.2 NM

Knots	60	90	120	150	180
Min:Sec	6:12	4:08	3:06	2:29	2:04

LOC RWY 30

KERRVILLE, TEXAS

AL-5690 (FAA)

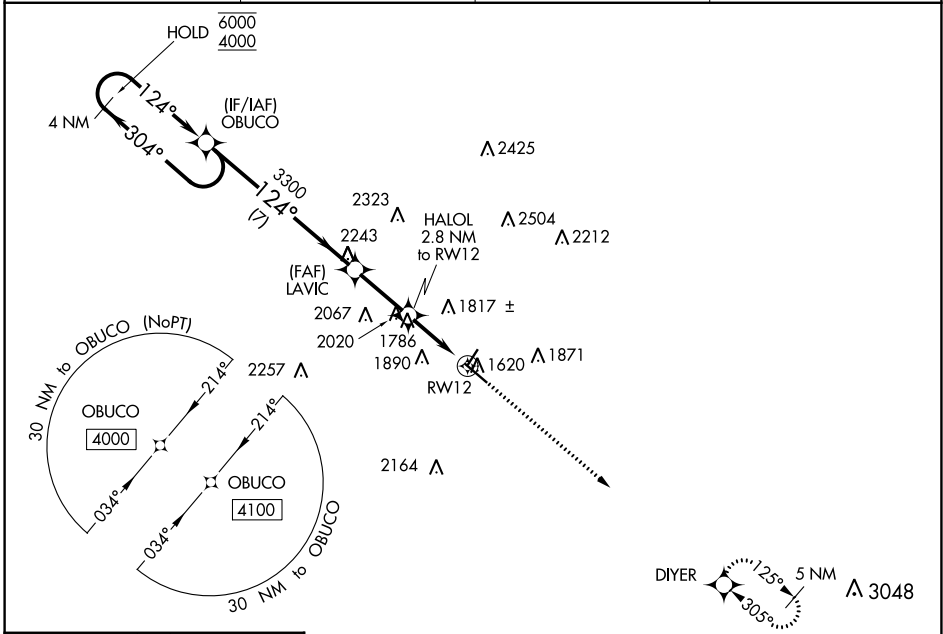
23054

WAAS CH 45628 W12A	APP CRS 124°	Rwy Idg TDZE Apt Elev	5313 1586 1617
---------------------------------	------------------------	-----------------------------	---

RNAV (GPS) RWY 12

KERRVILLE MUNI/LOUIS SCHREINER FLD (ERV)

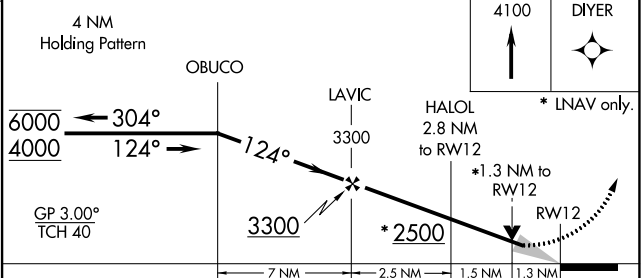
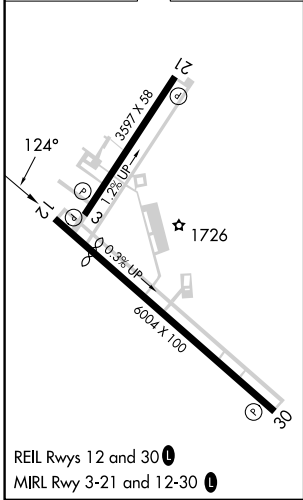
RNP APCH.			MISSED APPROACH: Climb to 4100 direct DIYER and hold.
<p>▼ ▲ For uncompensated Baro-VNAV systems, LNAV/VNAV NA below -18°C or above 54°C.</p>			
AWOS-3 118.125	HOUSTON CENTER 134.95 269.4	CLNC DEL 134.95	UNICOM 122.7 (CTAF) 0



SC-3, 22 FEB 2024 to 21 MAR 2024

SC-3, 22 FEB 2024 to 21 MAR 2024

ELEV 1617 **D** TDZE 1586



CATEGORY	A	B	C	D
LPV DA		1836-1	250 (300-1)	
LNAV/VNAV DA		1936-1½	350 (400-1½)	
LNAV MDA	2040-1	454 (500-1)	2040-1¾	454 (500-1¾)
C CIRCLING	2320-1 703 (800-1)	2340-1 723 (800-1)	2380-2¼ 763 (800-2¼)	2540-3 923 (1000-3)

KERRVILLE, TEXAS
Amdt 1B 30JAN20

KERRVILLE MUNI/LOUIS SCHREINER FLD (ERV)
29°59' N-99°05' W
RNAV (GPS) RWY 12

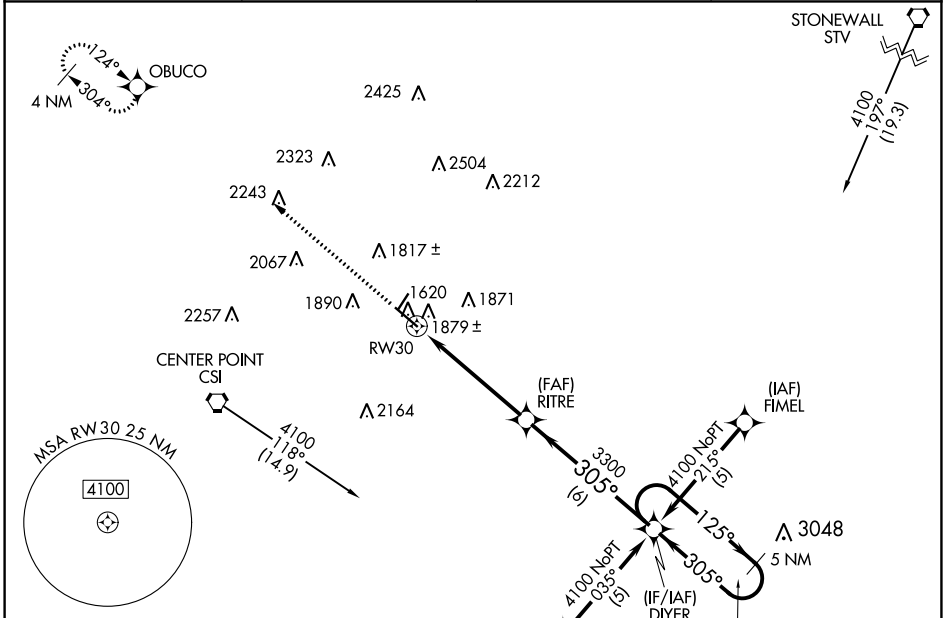
WAAS CH 77527 W30A	APP CRS 305°	Rwy Idg TDZE Apt Elev	5300 1589 1617
--	------------------------	-----------------------------	---

RNAV (GPS) RWY 30

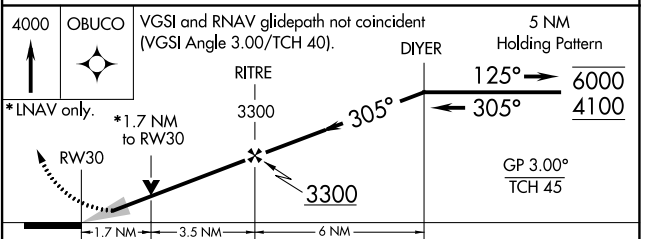
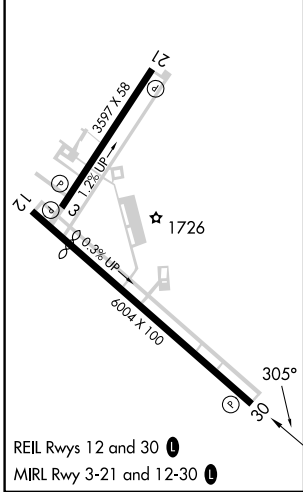
KERRVILLE MUNI/LOUIS SCHREINER FLD (ERV)

RNP APCH.		MISSED APPROACH: Climb to 4000 direct OBUCO and hold.	
-----------	--	---	--

AWOS-3 118.125	HOUSTON CENTER 134.95 269.4	CLNC DEL 134.95	UNICOM 122.7 (CTAF)
--------------------------	---------------------------------------	---------------------------	-------------------------------



ELEV 1617	D	TDZE 1589
-----------	----------	-----------



CATEGORY	A	B	C	D
LPV DA	1860-1 271 (300-1)			NA
LNAV MDA	2140-1	551 (600-1)	2140-1½ 551 (600-1½)	NA
C CIRCLING	2320-1 703 (800-1)	2340-1 723 (800-1)	2380-2¼ 763 (800-2¼)	NA

SC-3, 22 FEB 2024 to 21 MAR 2024

SC-3, 22 FEB 2024 to 21 MAR 2024

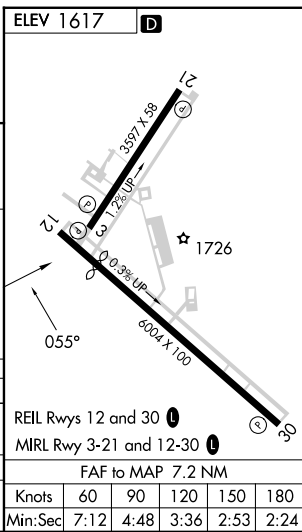
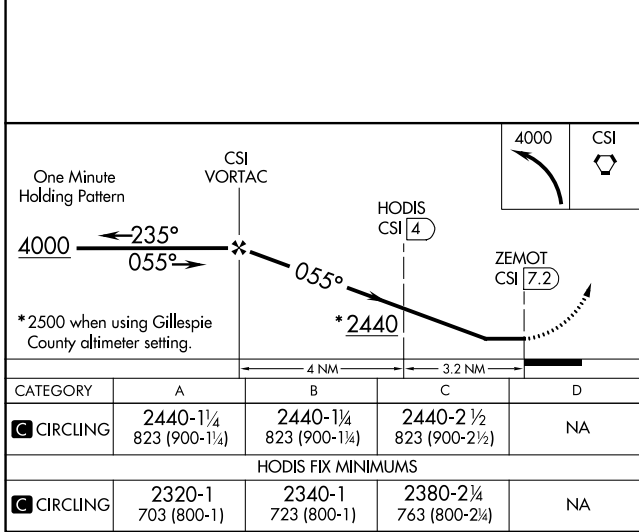
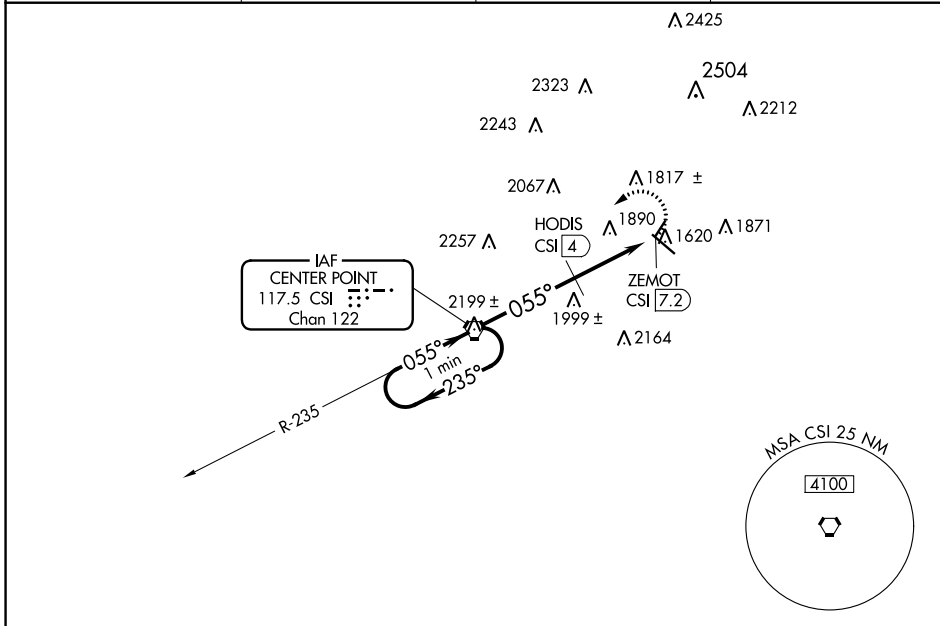
VORTAC CSI 117.5 Chan 122	APP CRS 055°	Rwy Idg TDZE Apt Elev 1617	N/A N/A 1617
---	------------------------	--	--------------------

VOR-A

KERRVILLE MUNI/LOUIS SCHREINER FLD (ERV)

▼ When local altimeter setting not received, use Fredericksburg altimeter setting and increase all MDAs 60 feet, increase Cat C visibility ¼ SM and HODIS fix minimums Cat C visibility ¼ SM.
▲ MISSED APPROACH: Climbing left turn to 4000 direct CSI VORTAC.

AWOS-3 118.125	HOUSTON CENTER 134.95 269.4	CLNC DEL 134.95	UNICOM 122.7 (CTAF) 0
--------------------------	---------------------------------------	---------------------------	---------------------------------



VOR-A

SC-3, 22 FEB 2024 to 21 MAR 2024

SC-3, 22 FEB 2024 to 21 MAR 2024