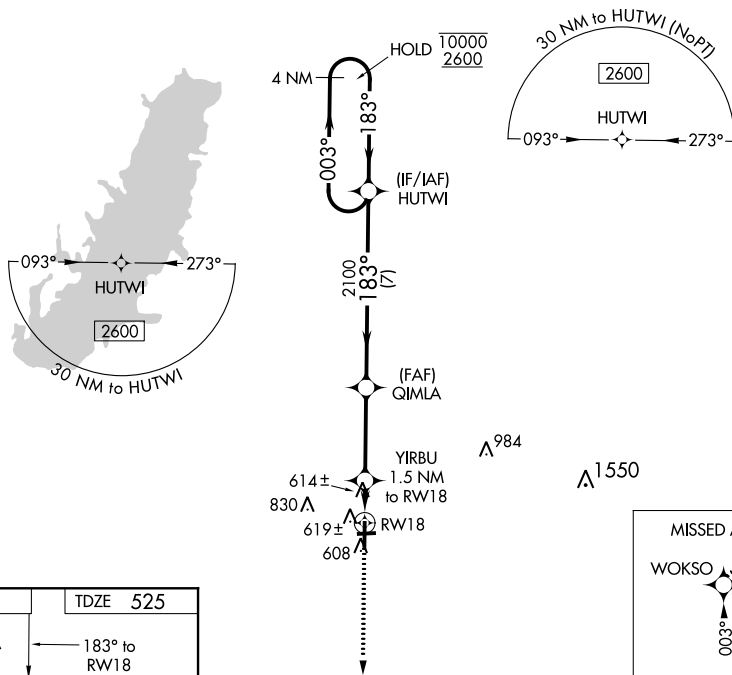


WAAS CH 77728 W18A	APP CRS 183°	Rwy Idg TDZE Apt Elev	5001 525 534
--	------------------------	-----------------------------	---

RNAV (GPS) RWY 18

CENTRALIA MUNI (ENL)

RNP APCH.		MISSED APPROACH: Climb to 2600 direct WOKSO and hold.
<p>▼ Rwy 18 helicopter visibility reduction below 3/4 SM NA. Circling Rwy 9, 27 NA at night.</p>		
AWOS-3 121.125	KANSAS CITY CENTER 127.7 351.825	UNICOM 122.8 (CTAF) 0

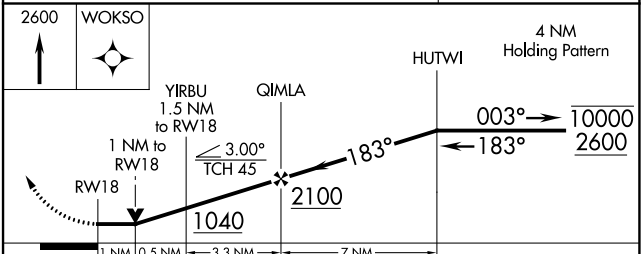


EC-3, 25 FEB 2021 to 25 MAR 2021

EC-3, 25 FEB 2021 to 25 MAR 2021

ELEV 534	TDZE 525
----------	----------

MIRL Rwy 9-27 and 18-36
REIL Rwy 18 and 36



WOKSO	↑	2600	4 NM Holding Pattern	
YIRBU 1.5 NM to RWY 18	QIMLA	HUTWI		
1 NM to RWY 18	3.00° TCH 45°	2100	10000 2600	
1 NM	0.5 NM	3.3 NM	7 NM	
CATEGORY	A	B	C	D
LP MDA	880-1		355 (400-1)	
LNAV MDA	900-1		375 (400-1)	
C CIRCLING	980-1 446 (500-1)	1000-1 466 (500-1)	1180-1¾ 646 (700-1¾)	1180-2 646 (700-2)

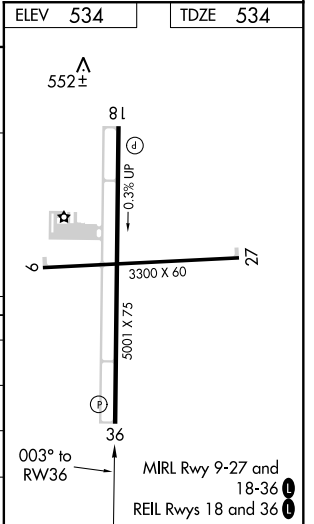
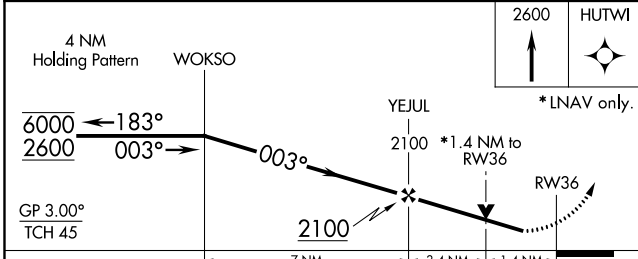
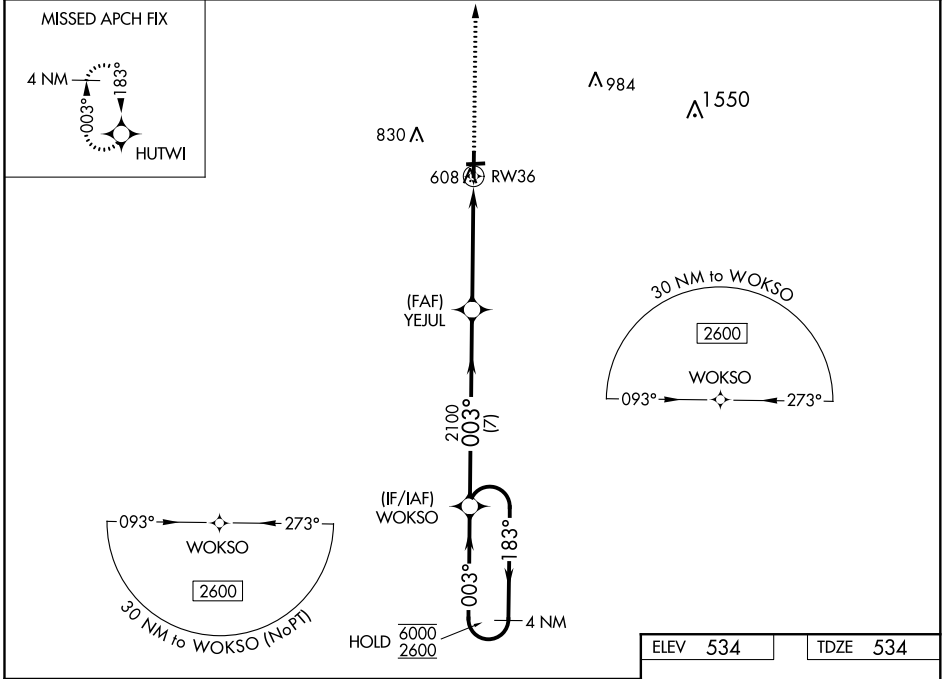
WAAS CH 61028 W36A	APP CRS 003°	Rwy Idg TDZE Apt Elev	5001 534 534
--	------------------------	-----------------------------	---

RNAV (GPS) RWY 36

CENTRALIA MUNI (ENL)

RNP APCH.	MISSED APPROACH: Climb to 2600 direct HUTWI and hold.
<p>▼ Circling Rwy 9, 27 NA at night. Rwy 36 helicopter visibility reduction below 3/4 SM NA. For uncompensated Baro-VNAV systems, LNAV/VNAV NA below -16°C or above 54°C.</p>	

AWOS-3 121.125	KANSAS CITY CENTER 127.7 351.825	UNICOM 122.8 (CTAF) 0
--------------------------	--	---------------------------------



CATEGORY	A	B	C	D
LPV DA	784-1		250 (300-1)	
LNAV/VNAV DA	975-1 3/8		441 (500-1 3/8)	
LNAV MDA	1040-1	506 (600-1)	1040-1 3/8	506 (600-1 3/8)
CIRCLING	1040-1	506 (600-1)	1180-1 3/4 646 (700-1 3/4)	1180-2 646 (700-2)

EC-3, 25 FEB 2021 to 25 MAR 2021

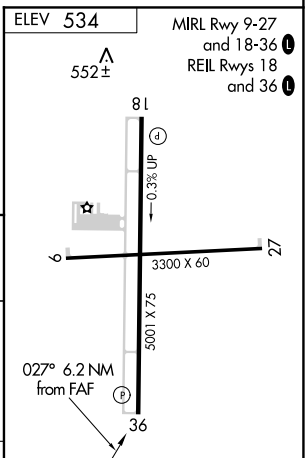
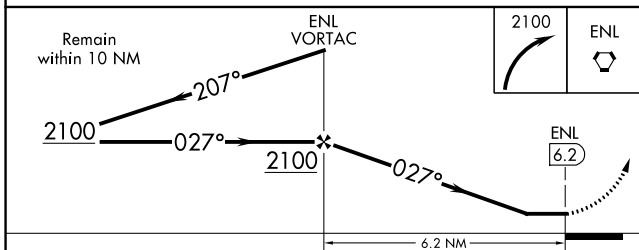
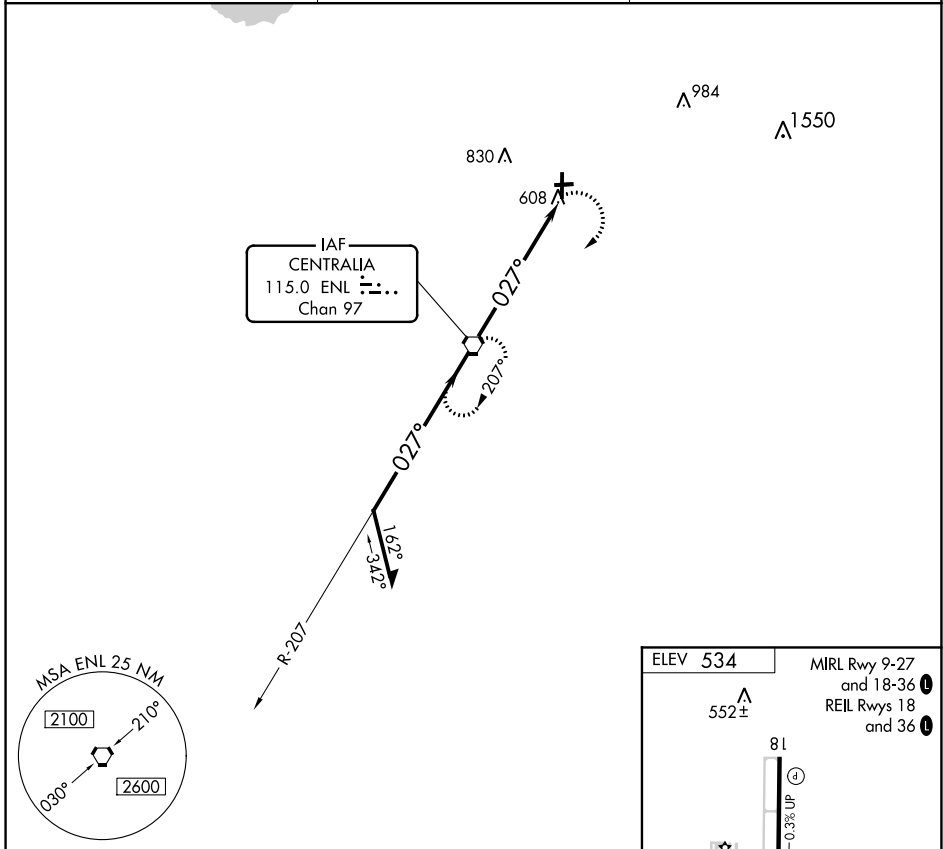
EC-3, 25 FEB 2021 to 25 MAR 2021

VORTAC ENL 115.0 Chan 97	APP CRS 027°	Rwy Idg TDZE Apt Elev	N/A N/A 534
--	------------------------	-----------------------------	--

VOR-A
CENTRALIA MUNI (ENL)

⚠ Circling Rwy 9, 27 NA at night. MISSED APPROACH: Climbing right turn to 2100 direct ENL VORTAC and hold.

AWOS-3 121.125	KANSAS CITY CENTER 127.7 351.825	UNICOM 122.8 (CTAF) ⓘ
--------------------------	--	--



CATEGORY	FAF to MAP 6.2 NM			
	A	B	C	D
ⓐ CIRCLING	980-1 446 (500-1)	1000-1 466 (500-1)	1180-1¾ 646 (700-1¾)	1200-2 666 (700-2)
	Knots 60	90	120	150
	Min:Sec 6:12	4:08	3:06	2:29
		180	2:04	

EC-3, 25 FEB 2021 to 25 MAR 2021

EC-3, 25 FEB 2021 to 25 MAR 2021