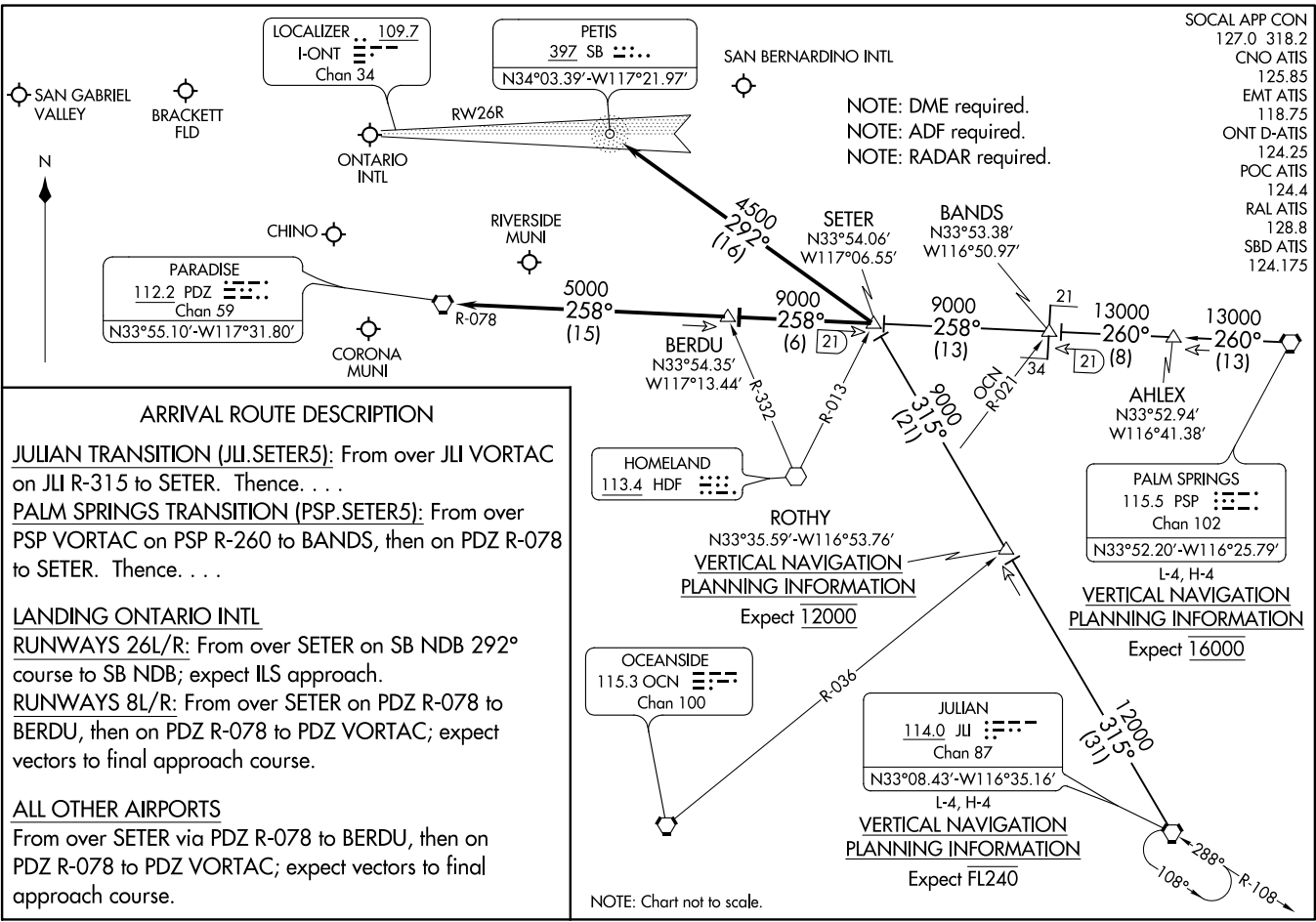


SETER FIVE ARRIVAL
 (SETER.SETER5) 17AUG17

SETER FIVE ARRIVAL
 (SETER.SETER5) 21112



SOCAL APP CON	127.0	318.2
CNO ATIS	125.85	
EMT ATIS	118.75	
ONT D-ATIS	124.25	
POC ATIS	124.4	
RAL ATIS	128.8	
SBD ATIS	124.175	

NOTE: DME required.
 NOTE: ADF required.
 NOTE: RADAR required.

ARRIVAL ROUTE DESCRIPTION

JULIAN TRANSITION (JLI.SETER5): From over JLI VORTAC on JLI R-315 to SETER. Thence. . . .

PALM SPRINGS TRANSITION (PSP.SETER5): From over PSP VORTAC on PSP R-260 to BANDS, then on PDZ R-078 to SETER. Thence. . . .

LANDING ONTARIO INTL

RUNWAYS 26L/R: From over SETER on SB NDB 292° course to SB NDB; expect ILS approach.

RUNWAYS 8L/R: From over SETER on PDZ R-078 to BERDU, then on PDZ R-078 to PDZ VORTAC; expect vectors to final approach course.

ALL OTHER AIRPORTS

From over SETER via PDZ R-078 to BERDU, then on PDZ R-078 to PDZ VORTAC; expect vectors to final approach course.

NOTE: Chart not to scale.

AL-965 (FAA)

ONTARIO, CALIFORNIA

ONTARIO, CALIFORNIA

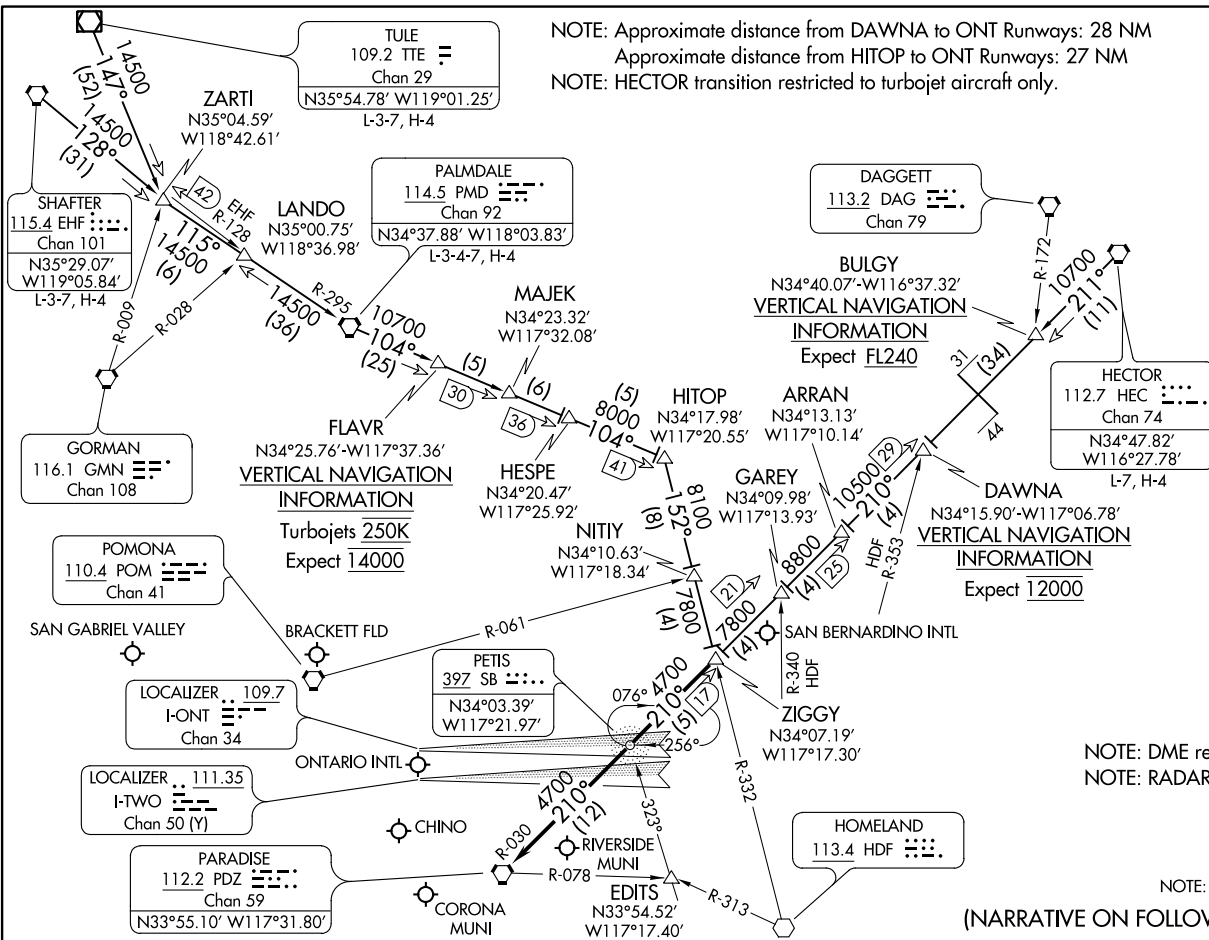
NOTE: Approximate distance from DAWNA to ONT Runways: 28 NM
Approximate distance from HITOP to ONT Runways: 27 NM
NOTE: HECTOR transition restricted to turbojet aircraft only.

SOCAL APP CON
127.0 318.2
CNO ATIS
125.85
EMT ATIS
118.75
ONT D-ATIS
124.25
POC ATIS
124.4
RAL ATIS
128.8
SBD ATIS
124.175

(ZIGGY ZIGGY7) 21112
ZIGGY SEVEN ARRIVAL

AL-965 (FAA)

ONTARIO, CALIFORNIA



NOTE: DME required.
NOTE: RADAR required.

NOTE: Chart not to scale
(NARRATIVE ON FOLLOWING PAGE)

ZIGGY SEVEN ARRIVAL
(ZIGGY ZIGGY7) 01FEB18

ONTARIO, CALIFORNIA

ARRIVAL ROUTE DESCRIPTION

HECTOR TRANSITION (HEC.ZIGGY7): From over HEC VORTAC on HEC R-211 and PDZ R-030 to ZIGGY. Thence

PALMDALE TRANSITION (PMD.ZIGGY7): From over PMD VORTAC on PMD R-104 to HITOP, then on HDF R-332 to ZIGGY. Thence

SHAFTER TRANSITION (EHF.ZIGGY7): From over EHF VORTAC on EHF R-128 and PMD R-295 to PMD VORTAC, then on PMD R-104 to HITOP, then on HDF R-332 to ZIGGY. Thence

TULE TRANSITION (TTE.ZIGGY7): From over TTE VOR/DME on TTE R-147 and PMD R-295 to PMD VORTAC, then on PMD R-104 to HITOP, then on HDF R-332 to ZIGGY. Thence

LANDING ONTARIO INTL

RUNWAYS 8L/R: From over ZIGGY on PDZ R-030 to PDZ VORTAC; expect RADAR vectors to final approach course.

RUNWAYS 26 L/R: From over ZIGGY direct PETIS NDB or on PDZ R-030 to PETIS; expect RADAR vectors for ILS approach.

ALL OTHER AIRPORTS

From over ZIGGY on PDZ R-030 to PDZ VORTAC; expect RADAR vectors to final approach course.

SW-3, 02 DEC 2021 to 30 DEC 2021

SW-3, 02 DEC 2021 to 30 DEC 2021