

RNAV (GPS) RWY 18

ELY/YELLAND FLD (ELY)

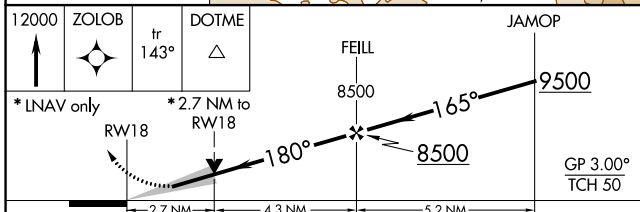
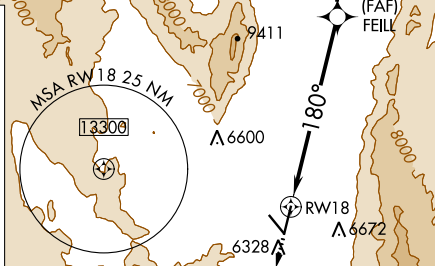
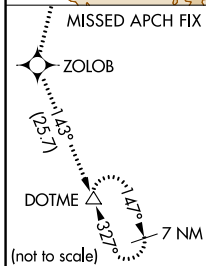
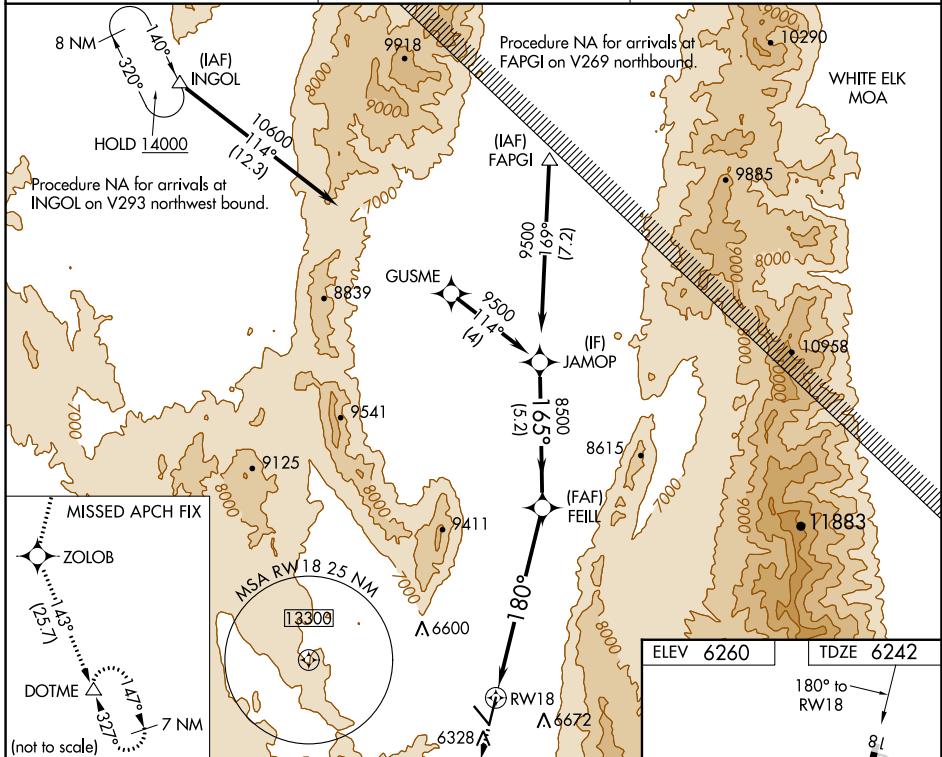
WAAS CH 42823 W18A	APP CRS 180°	Rwy Idg TDZE Apt Elev	6017 6242 6260
--	------------------------	-----------------------------	---

RNP APCH.

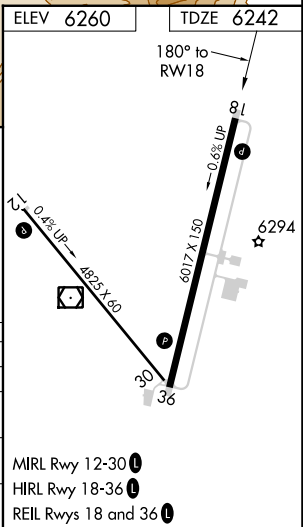
Baro-VNAV NA. Circling Rwy 30 NA at night. Circling NA for Cats A and B southwest of Rwy 12 and west of Rwy 36. Circling NA for Cats C and D southwest of Rwy 12 and east of Rwy 18.

MISSED APPROACH: Climb to 12000 direct ZOLOB and on track 143° to DOTME and hold.

ASOS 120.625	SALT LAKE CENTER 133.45 317.625	UNICOM 122.8 (CTAF)
------------------------	---	-------------------------------



12000	ZOLOB	tr 143°	DOTME	JAMOP
*LNAV only			*2.7 NM to RWY 18	
2.7 NM	4.3 NM	5.2 NM		
CATEGORY	A	B	C	D
LPV DA		6652-1 1/8	410 (400-1 1/8)	
LNAV/VNAV DA		7274-4	1032 (1100-4)	
LNAV MDA	7140-1 1/4	898 (900-1 1/4)	7140-2 1/2	898 (900-2 1/2)
CIRCLING	7140-1 1/4	880 (900-1 1/4)	7140-2 1/2	8220-3
		880 (900-2 1/2)	1960 (2000-3)	



SW-4, 22 FEB 2024 to 21 MAR 2024

SW-4, 22 FEB 2024 to 21 MAR 2024

MIRL Rwy 12-30
HIRL Rwy 18-36
REIL Rws 18 and 36

VOR/DME ELY 113.95 Chan 86(Y)	APP CRS 179°	Rwy Idg TDZE Apt Elev N/A N/A 6260
---	------------------------	--

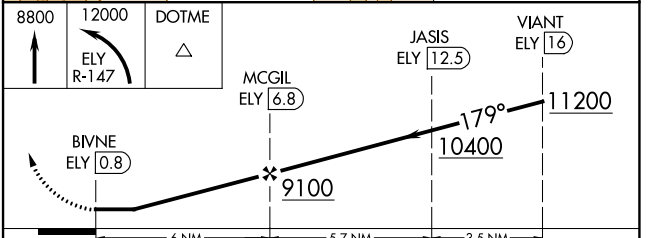
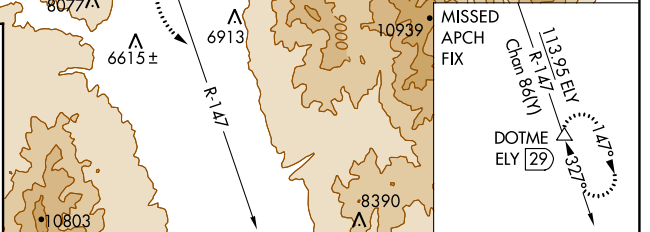
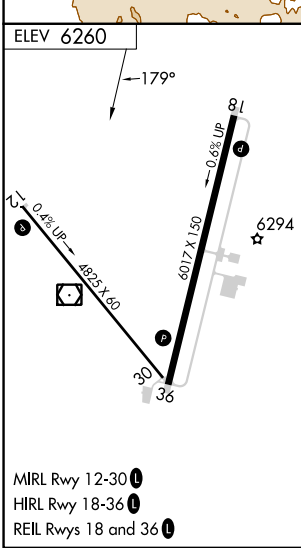
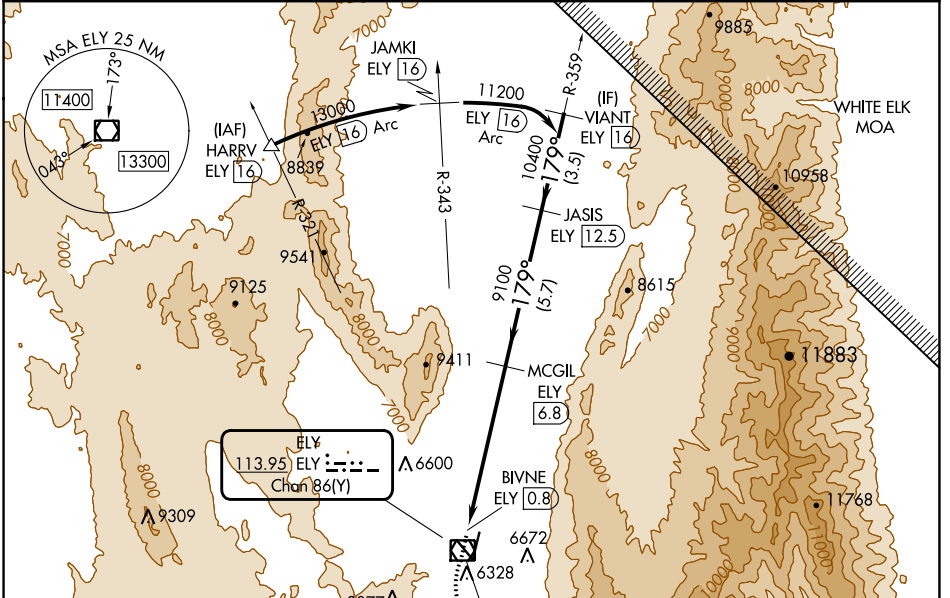
VOR-C
ELY/YELLAND FLD (ELY)

DME required.

▼ Rwy 30 helicopter visibility reduction below 1 SM NA. Circling Rwy 30 NA at night. Circling NA for Cats A and B southwest of Rwy 12 and west of Rwy 36. Circling NA for Cats C and D southwest of Rwy 12 and east of Rwy 18.

MISSED APPROACH: Climb to 8800 then climbing left turn to 12000 on ELY VOR/DME R-147 to DOTME/ELY 29 DME and hold.

ASOS 120.625	SALT LAKE CENTER 133.45 317.625	UNICOM 122.8 (CTAF) 0
------------------------	---	---------------------------------



CATEGORY	A	B	C	D
C CIRCLING	8060-1¼ 1800 (1800-1¼)	8060-1½ 1800 (1800-1½)	8060-3 1800 (1800-3)	8220-3 1960 (2000-3)

SW-4, 22 FEB 2024 to 21 MAR 2024

SW-4, 22 FEB 2024 to 21 MAR 2024