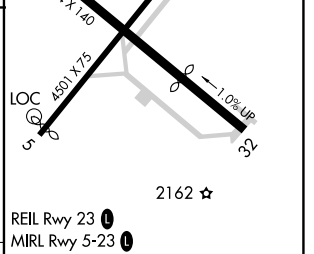
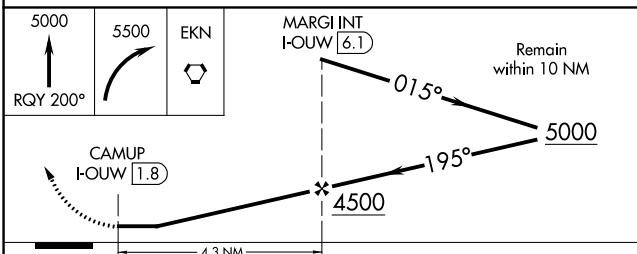
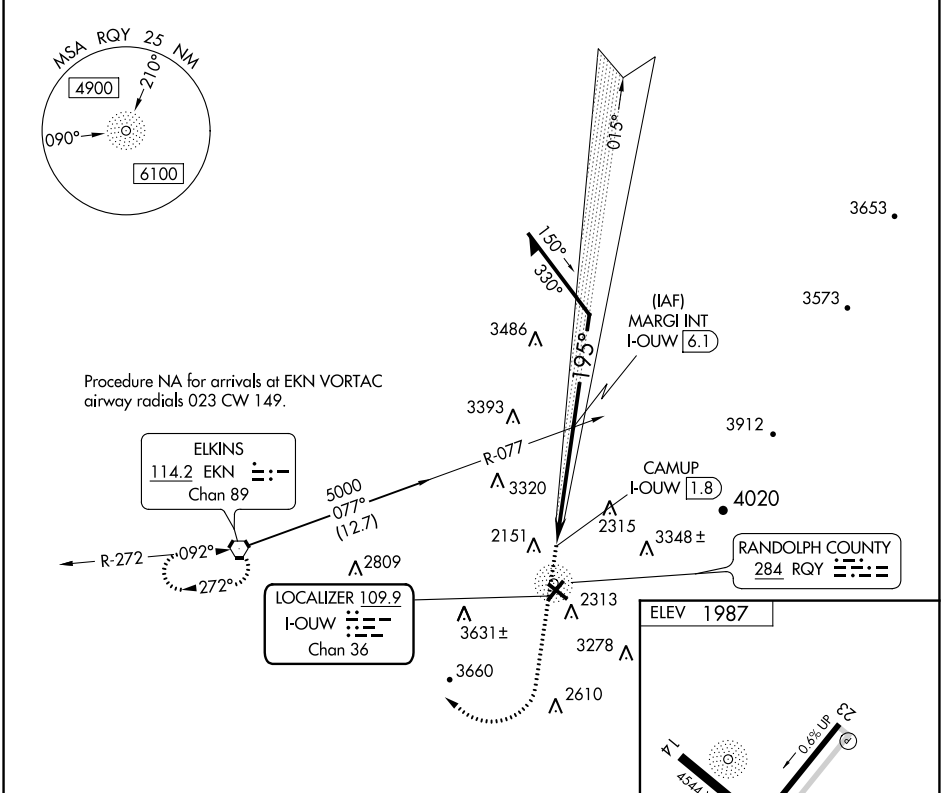


LOC/DME I-OUW 109.9 Chan 36	APP CRS 195°	Rwy Idg TDZE Apt Elev	N/A N/A 1987
---	------------------------	-----------------------------	---

ELKINS/
RANDOLPH COUNTY (JENNINGS RANDOLPH FLD)(EKN)
LDA-C

ADF REQUIRED	MISSED APPROACH: Climb to 5000 on RQY NDB 200° then climbing right turn to 5500 direct EKN VORTAC and hold.
<p>⚠ Circling Rwy 14, 23, 32 NA at night. When local altimeter setting not received, use Buckhannon altimeter setting and increase all MDA 100 feet.</p> <p>❄ -20°C</p>	

ASOS 119.275	CLARKSBURG APP CON ★ 121.15 284.65	CTAF 123.6	122.9 0
------------------------	--	----------------------	----------------



CATEGORY	A	B	C	D	FAF to MAP 4.3 NM					
CIRCLING	3100-1¼ 1113 (1200-1¼)	3140-1½ 1153 (1200-1½)	3720-3 1733 (1800-3)	4020-3 2033 (2100-3)	Knots	60	90	120	150	180
					Min:Sec	4:18	2:52	2:09	1:43	1:26

NE-4, 22 FEB 2024 to 21 MAR 2024

NE-4, 22 FEB 2024 to 21 MAR 2024

RNAV (GPS) RWY 23

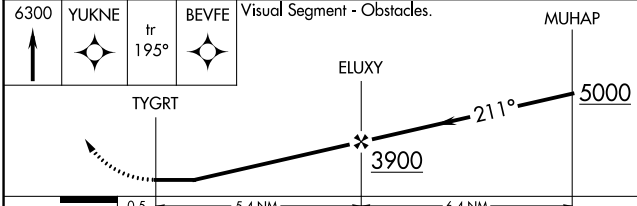
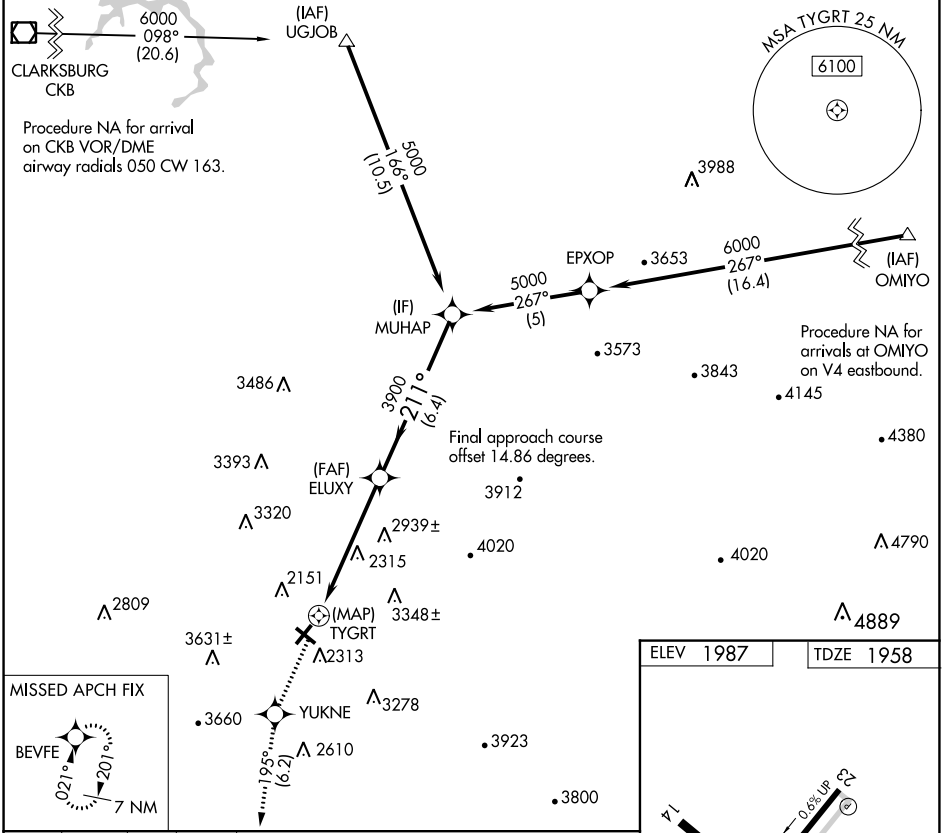
ELKINS/RANDOLPH COUNTY (JENNINGS RANDOLPH FLD) (EKN)

APP CRS 211°	Rwy Idg 4501
	TDZE 1958
	Apt Elev 1987

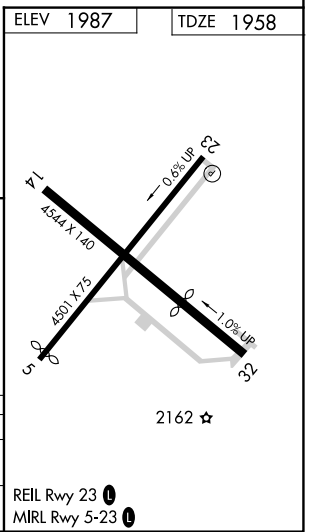
RNP APCH. Straight-in Rwy 23 NA at night, Circling to Rwy 14, 23, 32 NA at night.
 When local altimeter setting not received, use Buckhannon altimeter setting and increase all MDAs 100 feet. Rwy 23 helicopter visibility reduction below 1 SM NA.
 -20°C

MISSED APPROACH: Climb to 6300 direct YUKNE and on track 195° to BEVFE and hold, continue climb-in hold to 6300.

ASOS 119.275	CLARKSBURG APP CON ★ 121.15 284.65	CTAF 123.6	122.9 0
------------------------	--	----------------------	----------------



CATEGORY	A	B	C	D
LNVA MDA	3160-1¼ 1202 (1200-1¼)	3160-1½ 1202 (1200-1½)	3160-3	1202 (1200-3)
CIRCLING	3160-1¼ 1173 (1200-1¼)	3160-1½ 1173 (1200-1½)	3720-3 1733 (1800-3)	NA



NE-4, 22 FEB 2024 to 21 MAR 2024

NE-4, 22 FEB 2024 to 21 MAR 2024

RNAV (GPS) RWY 23

APP CRS	Rwy Idg	4347
032°	TDZE	1972
	Apt Elev	1987

RNAV (GPS) RWY 5

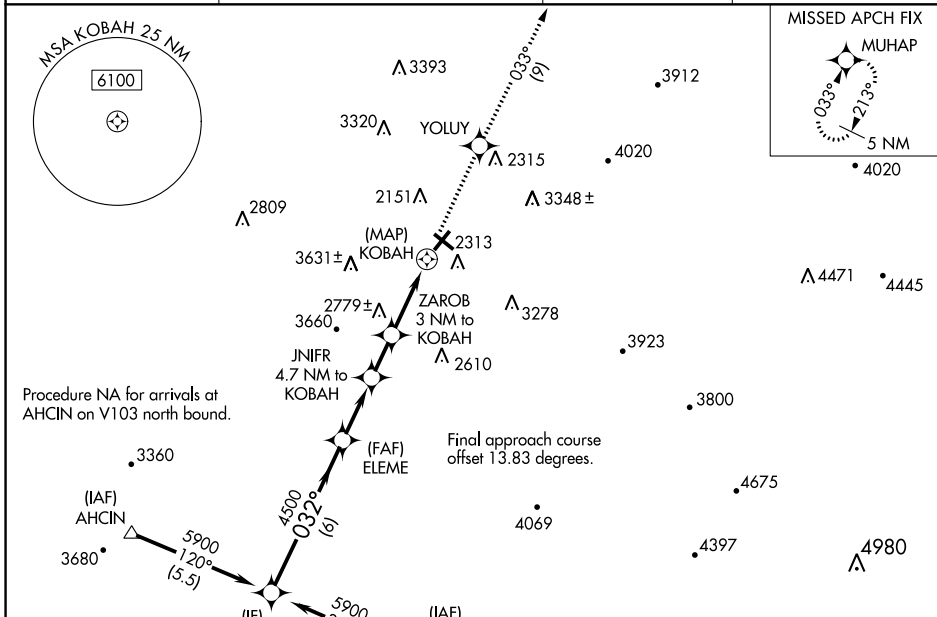
ELKINS/RANDOLPH COUNTY (JENNINGS RANDOLPH FLD) (EKN)

RNP APCH.

⚠ Circling Rwy 14, 23, 32 NA at night. When local altimeter setting not received, use Buckhannon altimeter setting and increase all MDA 100 feet.
⚠ Straight-in minimums NA when using Buckhannon altimeter setting.
⚠ Rwy 5 helicopter visibility reduction below 3/4 SM NA.

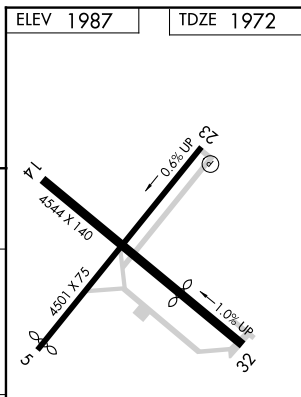
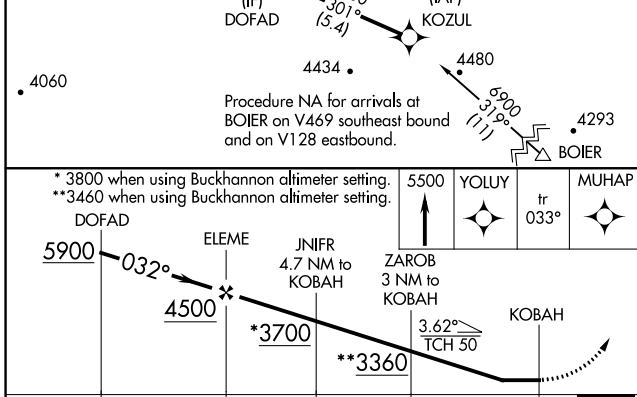
MISSED APPROACH: Climb to 5500 direct YOLUY and on track 033° to MUHAP and hold.

ASOS 119.275	CLARKSBURG APP CON ★ 121.15 284.65	CTAF 123.6	122.9 0
------------------------	--	----------------------	----------------



NE-4, 22 FEB 2024 to 21 MAR 2024

NE-4, 22 FEB 2024 to 21 MAR 2024



CATEGORY	A	B	C	D
LNVA MDA	3040-1½ 1068 (1100-1½)	3040-1½ 1068 (1100-1½)	3040-3 1068 (1100-3)	NA
C CIRCLING	3040-1½ 1053 (1100-1½)	3140-1½ 1153 (1200-1½)	3720-3 1733 (1800-3)	4020-3 2033 (2100-3)

REIL Rwy 23 **0**
MIRL Rwy 5-23 **0**

APP CRS 331°	Rwy Idg TDZE Apt Elev	N/A N/A 1987
------------------------	-----------------------------	---------------------------

RNAV (GPS)-A

ELKINS/RANDOLPH COUNTY (JENNINGS RANDOLPH FLD) (EKN)

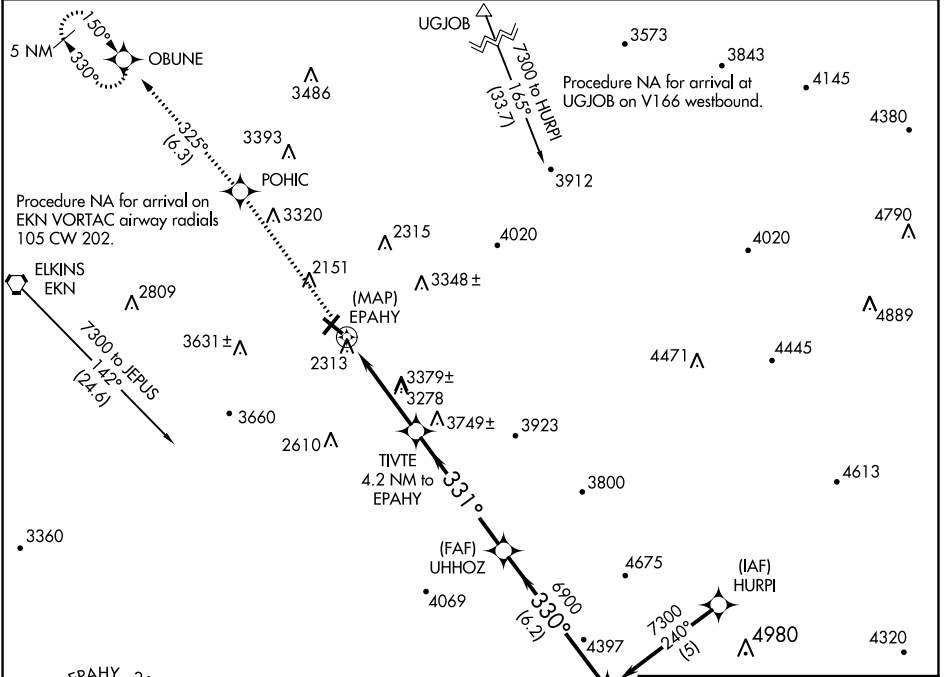
RNP APCH.

⚠ Circling Rwy 14, 23, 32 NA at night. When local altimeter setting not received, use Buckhannon altimeter setting and increase all MDA 100 feet.

❄ -20°C

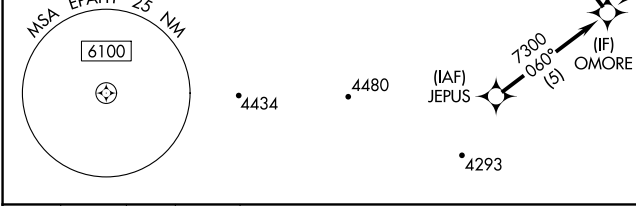
MISSED APPROACH: Climb to 4500 direct POHIC and on track 325° to OBUNE and hold.

ASOS 119.275	CLARKSBURG APP CON ★ 121.15 284.65	CTAF 123.6	122.9 0
------------------------	--	----------------------	----------------

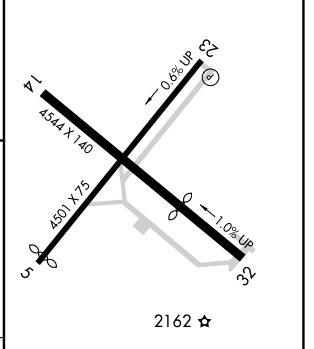
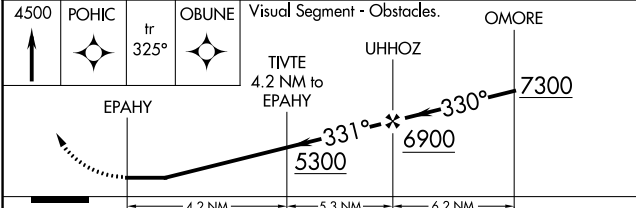


NE-4, 22 FEB 2024 to 21 MAR 2024

NE-4, 22 FEB 2024 to 21 MAR 2024



ELEV 1987



CATEGORY	A	B	C	D
C CIRCLING	3640-1¼ 1653 (1700-1¼)	3640-1½ 1653 (1700-1½)	3720-3 1733 (1800-3)	NA

MIRL Rwy 5-23 **0**
REIL Rwy 23 **0**