

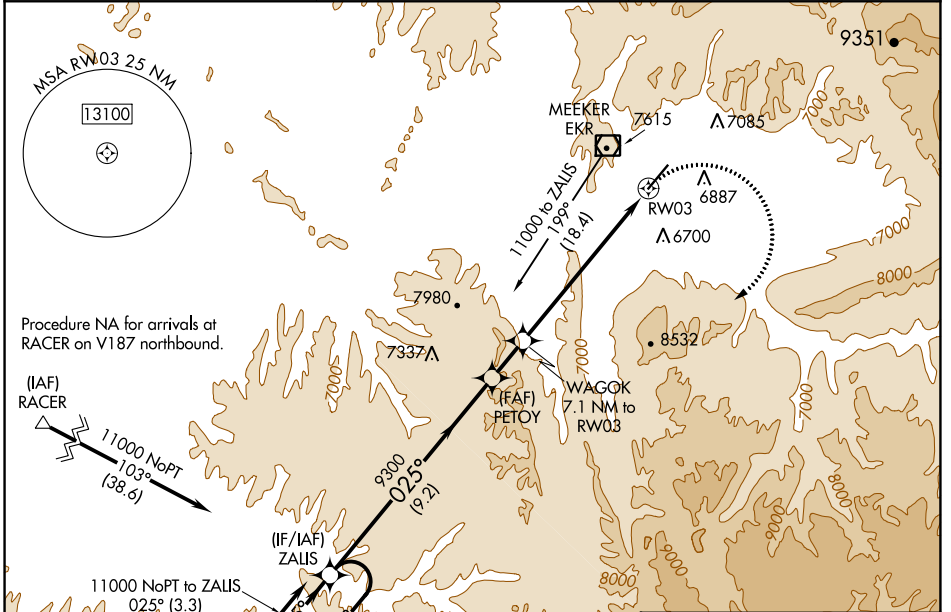
APP CRS	Rwy Idg	6503
025°	TDZE	6381
	Apt Elev	6415

RNAV (GPS) RWY 3

MEEKER COULTER FLD (E/O)

RNP APCH.	MISSED APPROACH: Climbing right turn to 11000 direct ZALIS and hold.
 -25°C	

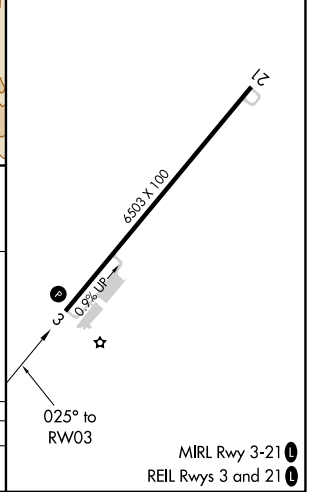
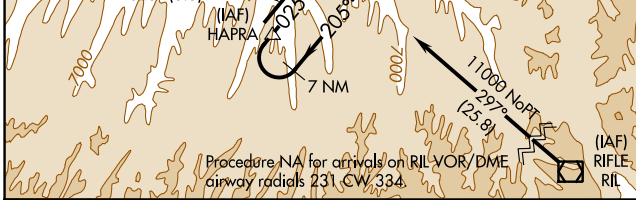
ASOS 135.525	DENVER CENTER 134.5 327.8	UNICOM 122.8 (CTAF)
------------------------	-------------------------------------	-------------------------------



SW-1, 22 FEB 2024 to 21 MAR 2024

SW-1, 22 FEB 2024 to 21 MAR 2024

ELEV 6415	TDZE 6381
-----------	-----------



CATEGORY	A	B	C	D
	8160-1¼ 1779 (1800-1¼)	8160-1½ 1779 (1800-1½)	8160-3 1779 (1800-3)	NA

7 NM Holding Pattern	ZALIS	PETOY	WAGOK 7.1 NM to RW03	RW03
11000	9300	8720	11000	11000
← 205°	← 025°	← 025°	← 025°	← 025°
9.2 NM	1.7 NM	7.1 NM		

APP CRS	Rwy Idg	N/A
126°	TDZE	N/A
	Apt Elev	6415

RNAV (GPS)-B

MEEKER COULTER FLD (EEO)

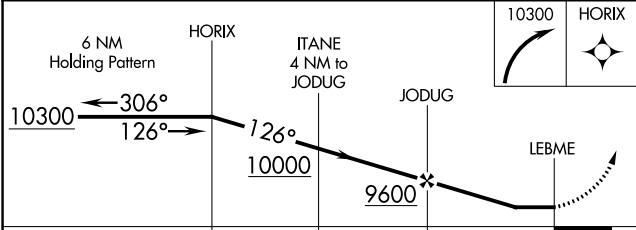
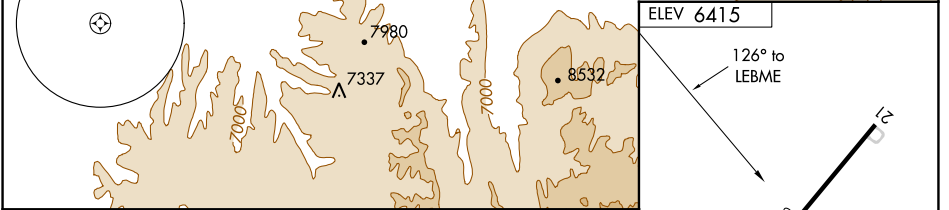
⚠ DME/DME RNP-0.3 NA. Circling not authorized west of Rwy 3-21. Night Landing: Rwy 21 NA.
⚠ -25°C Helicopter visibility reduction below 1 SM NA.
⚠ MISSED APPROACH: Climbing right turn to 10300 direct HORIX WP and hold.

ASOS 135.525	DENVER CENTER 134.5 327.8	UNICOM 122.8 (CTAF) 📶
------------------------	-------------------------------------	--



SW-1, 22 FEB 2024 to 21 MAR 2024

SW-1, 22 FEB 2024 to 21 MAR 2024



CATEGORY	A	B	C	D
CIRCLING	7960-1¼ 1545 (1600-1¼)	7960-1½ 1545 (1600-1½)	8440-3 2025 (2100-3)	NA

ELEV 6415

126° to LEBME

6303 x 100

0.9% UP

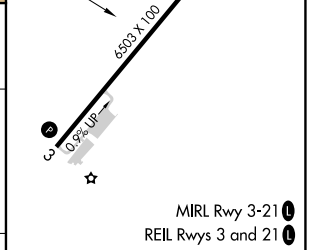
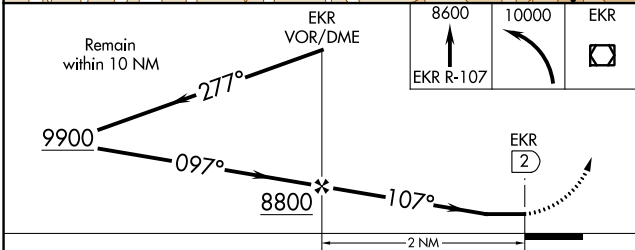
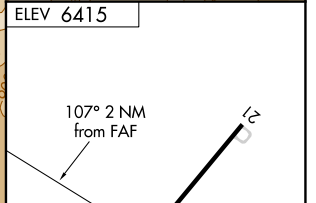
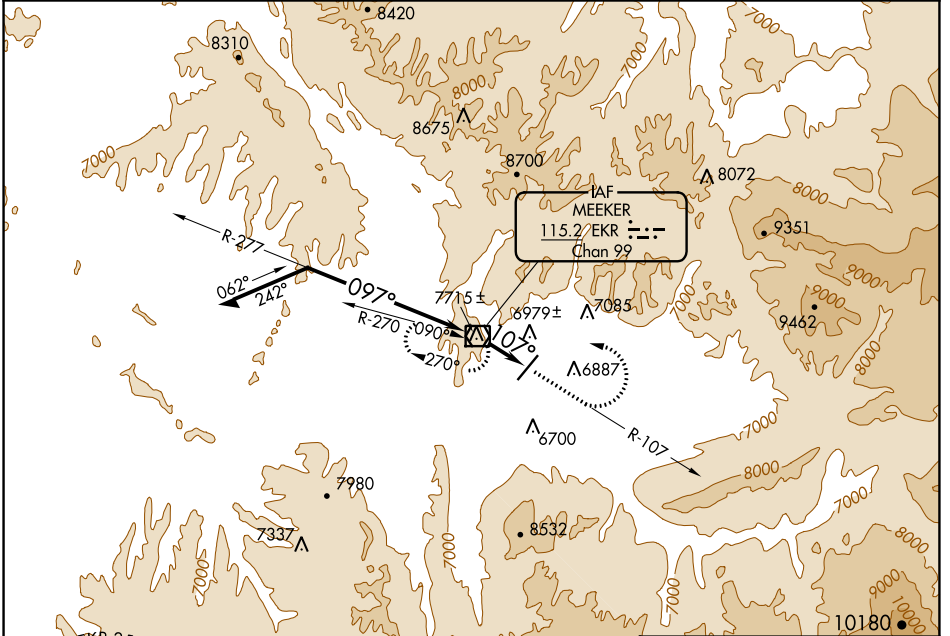
MIRL Rwy 3-21 **📶**
 REIL Rwys 3 and 21 **📶**

VOR/DME EKR 115.2 Chan 99	APP CRS 107°	Rwy Idg TDZE Apt Elev N/A N/A 6415
---	------------------------	--

VOR-A
MEEKER COULTER FLD (E/O)

<p>⚠ Circling not authorized west of Rwy 3-21. ⚠ NA Night landing: Rwy 21 NA. ⚠ -25°C Helicopter visibility reduction below 1 SM NA.</p>	<p>MISSED APPROACH: Climb via EKR VOR/DME R-107 to 8600, then climbing left turn to 10000 direct EKR VOR/DME and hold.</p>
---	--

ASOS 135.525	DENVER CENTER 134.5 327.8	UNICOM 122.8 (CTAF) 0
------------------------	-------------------------------------	---------------------------------



CATEGORY	A	B	C	D	FAF to MAP 2 NM					
CIRCLING	8000-1¼ 1585 (1600-1¼)	8000-1½ 1585 (1600-1½)	8440-3 2025 (2100-3)	NA	Knots	60	90	120	150	180
					Min:Sec	2:00	1:20	1:00	0:48	0:40

SW-1, 22 FEB 2024 to 21 MAR 2024

SW-1, 22 FEB 2024 to 21 MAR 2024