

LOC I-EN 108.9	APP CRS 018°	Rwy Idg TDZE Apt Elev	6201 488 488
--------------------------	------------------------	-----------------------------	---

ILS or LOC RWY 2

DILLANT-HOPKINS (EEN)

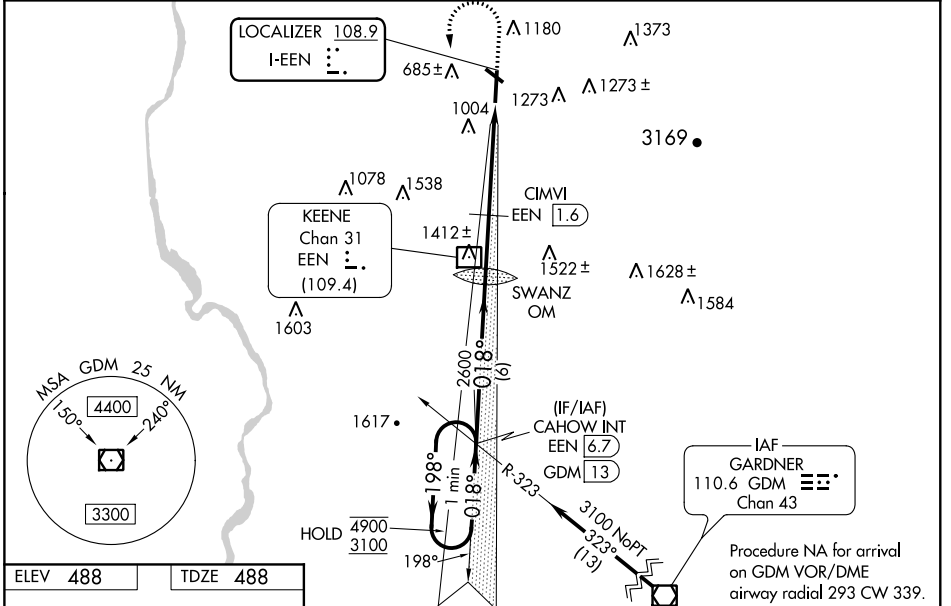
ADF required for LOC only.

⚠ Circling Rwy 32 NA at night. Rwy 2 helicopter visibility reduction below 3/4 SM NA. Inop table does not apply to S-ILS 2 all Cats, S-LOC 2 Cats A/C/D and S-LOC 2 CIMVI fix minimums Cat A. For inop ALS increase CIMVI fix minimums: S-LOC 2 Cat B to 1 1/4 SM and Cat C/D to 2 1/2 SM.

MALSR

MISSED APPROACH: Climb to 1500 then climbing left turn to 3100 on heading 190° and GDM VOR/DME R-323 to CAHOW INT/GDM VOR/DME 13 DME and hold.

AWOS-3PT 119.025	BOSTON CENTER 123.75 338.2	UNICOM 123.0 (CTAF) 0
----------------------------	--------------------------------------	---------------------------------



ELEV 488 TDZE 488

REIL Rwy 14 and 32
HIRL Rwy 2-20
MIRL Rwy 14-32

018° 6.3 NM from FAF

FAF to MAP 6.3 NM

Knots	60	90	120	150	180
Min:Sec	6:18	4:12	3:09	2:31	2:06

One Minute Holding Pattern	CAHOW INT EEN (6.7)	1500	3100	GDM R-323	CAHOW INT
4900 ← 198°	018° →	2573	2600	1860	
GS 3.00° TCH 43	VGSI and ILS glidepath not coincident (VGSI Angle 3.00/TCH 39)	6 NM	2.2 NM	1.6 NM	2.5
CATEGORY	A	B	C	D	
S-ILS 02	859-1 371 (400-1)				
S-LOC 02	1860-1 1/4	1372 (1400-1 1/4)	1860-3	1372 (1400-3)	
C CIRCLING	1860-1 1/4	1860-1 1/2	1860-3	1980-3	
	1372 (1400-1 1/4)	1372 (1400-1 1/2)	1372 (1400-3)	1492 (1500-3)	
CIMVI FIX MINIMUMS					
S-LOC 02	1320-1	832 (900-1)	1320-1 1/8	832 (900-1 1/8)	
C CIRCLING	1380-1 1/4	1480-1 1/2	1760-3	1980-3	
	892 (900-1 1/4)	992 (1000-1 1/2)	1272 (1300-3)	1492 (1500-3)	

NE-1, 30 DEC 2021 to 27 JAN 2022

NE-1, 30 DEC 2021 to 27 JAN 2022

WAAS CH 65708	APP CRS 018°	Rwy Idg TDZE 488	6201
W02A		Apt Elev 488	

RNAV (GPS) RWY 2

DILLANT-HOPKINS (EEN)

RNP APCH - GPS.

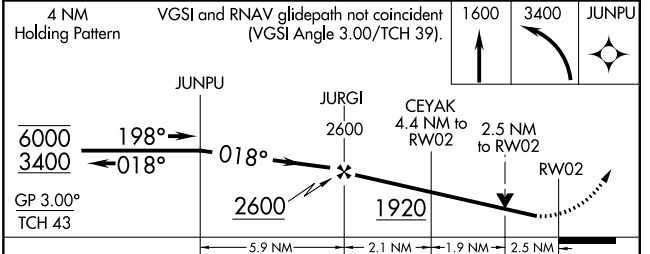
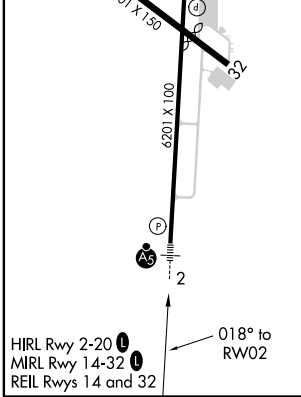
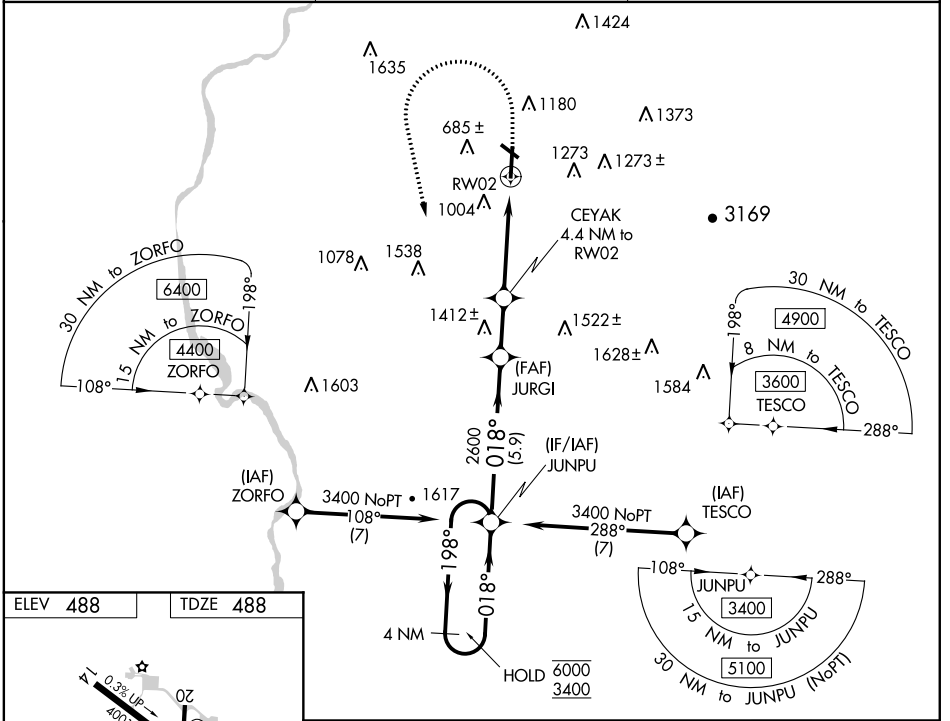
⚠ Circling Rwy 32 NA at night. Rwy 2 helicopter visibility reduction below 3/4 SM NA. Inop table does not apply to LPV all Cats and LNAV Cat A. For inop ALS, increase LNAV Cat B visibility to 1 1/4 SM.

⚠ -20°C

MALSRL
AS

MISSED APPROACH:
Climb to 1600 then climbing left turn to 3400 direct JUNPU and hold.

AWOS-3PT 119.025	BOSTON CENTER 123.75 338.2	UNICOM 123.0 (CTAF) 0
----------------------------	--------------------------------------	---------------------------------



CATEGORY	A	B	C	D
LPV DA	843-1 355 (400-1)			
LNAV MDA	1340-1	852 (900-1)	1340-2	852 (900-2)
C CIRCLING	1380-1 1/4 892 (900-1 1/4)	1480-1 1/2 992 (1000-1 1/2)	1760-3 1272 (1300-3)	1980-3 1492 (1500-3)

NE-1, 30 DEC 2021 to 27 JAN 2022

NE-1, 30 DEC 2021 to 27 JAN 2022