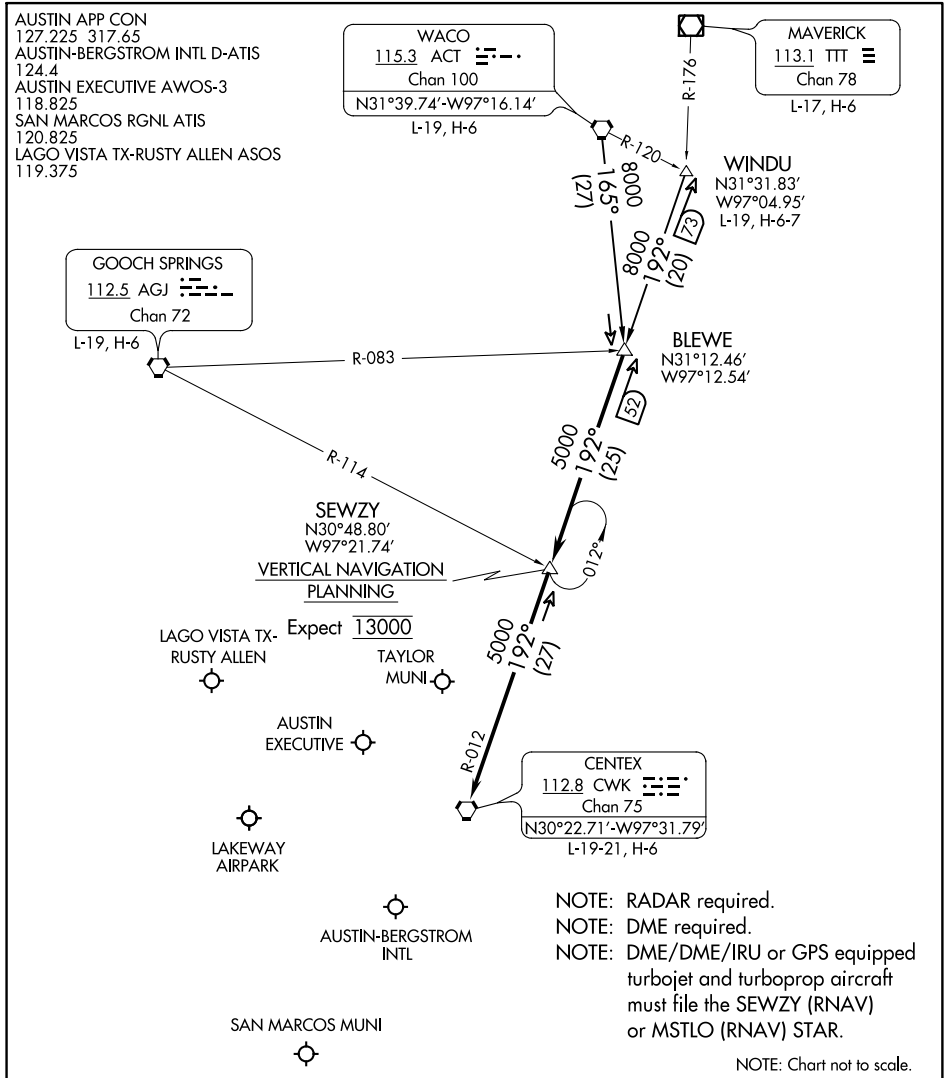


BLEWE FOUR ARRIVAL

AUSTIN, TEXAS



SC-3, 12 SEP 2019 to 10 OCT 2019

SC-3, 12 SEP 2019 to 10 OCT 2019

ARRIVAL ROUTE DESCRIPTION

WACO TRANSITION (ACT.BLEWE4): From over ACT VORTAC on ACT R-165 to BLEWE INT. Thence . . .

WINDU TRANSITION (WINDU.BLEWE4): From over WINDU INT on CWK R-012 to BLEWE INT. Thence . . .

. . . From over BLEWE on CWK R-012 to SEWZY, then on CWK R-012 to CWK VORTAC. Expect vectors to final approach course at or prior to CWK VORTAC.

BLEWE FOUR ARRIVAL

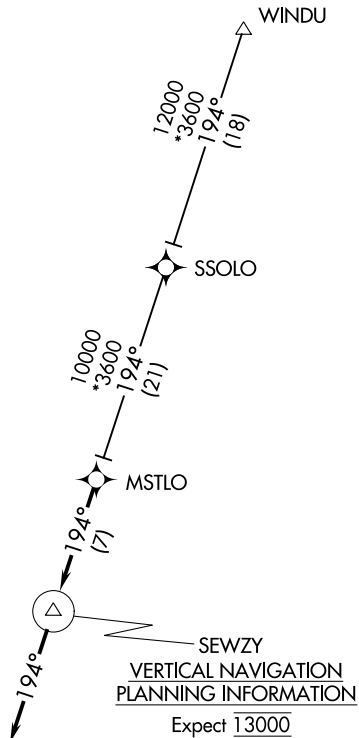
AUSTIN, TEXAS

MSTLO THREE ARRIVAL (RNAV)

AUSTIN, TEXAS

AUSTIN APP CON
 127.225 317.65
 GEORGETOWN MUNI ATIS
 118.6
 SAN MARCOS RGNL ATIS
 120.825
 AUSTIN EXECUTIVE AWOS-3
 118.825

- NOTE: RADAR required.
- NOTE: RNAV 1.
- NOTE: DME/DME/IRU or GPS required.
- NOTE: Turbojet and turboprop aircraft only.



SEWZY
VERTICAL NAVIGATION
PLANNING INFORMATION
 Expect 13000

NOTE: Chart not to scale.

ARRIVAL ROUTE DESCRIPTION

SSOLO TRANSITION (SSOLO.MSTLO3)
WINDU TRANSITION (WINDU.MSTLO3)

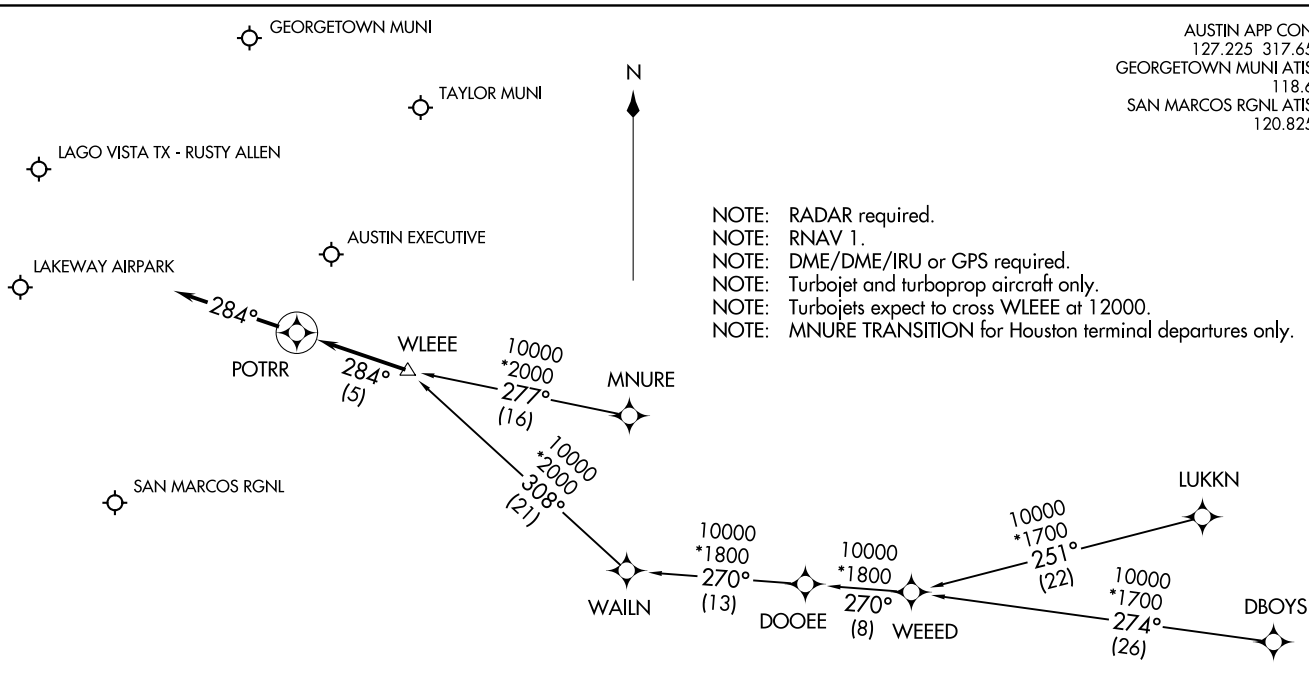
LANDING ALL AIRPORTS: From MSTLO on track 194° to SEWZY, then on track 194°. Expect RADAR vectors to final approach course.

POTRR ONE ARRIVAL (RNAV)
(WLEEE.POTRR1) 07DEC17

(WLEEE.POTRR1) 18256
POTRR ONE ARRIVAL (RNAV)

AUSTIN APP CON
127.225 317.65
GEORGETOWN MUNI ATIS
118.6
SAN MARCOS RGNL ATIS
120.825

- NOTE: RADAR required.
- NOTE: RNAV 1.
- NOTE: DME/DME/IRU or GPS required.
- NOTE: Turbojet and turboprop aircraft only.
- NOTE: Turbojets expect to cross WLEEE at 12000.
- NOTE: MNURE TRANSITION for Houston terminal departures only.



ARRIVAL ROUTE DESCRIPTION

- DBOYS TRANSITION (DBOYS.POTRR1)
- LUKKN TRANSITION (LUKKN.POTRR1)
- MNURE TRANSITION (MNURE.POTRR1)
- WEEED TRANSITION (WEEED.POTRR1)

LANDING ALL AIRPORTS: From WLEEE on track 284° to POTRR, then on track 284°. Expect RADAR vectors to final approach course.

AUSTIN, TEXAS

AUSTIN, TEXAS