

WAAS CH 63116 W13A	APP CRS 126°	Rwy Idg 5425 TDZE 620 Apt Elev 620
--	------------------------	---

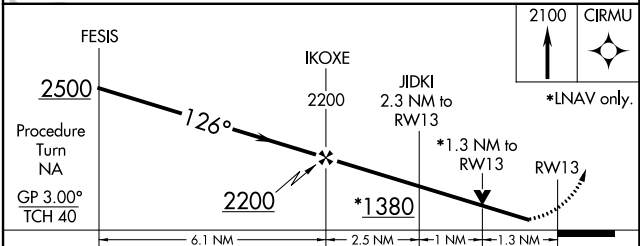
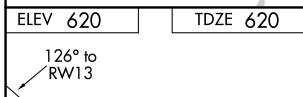
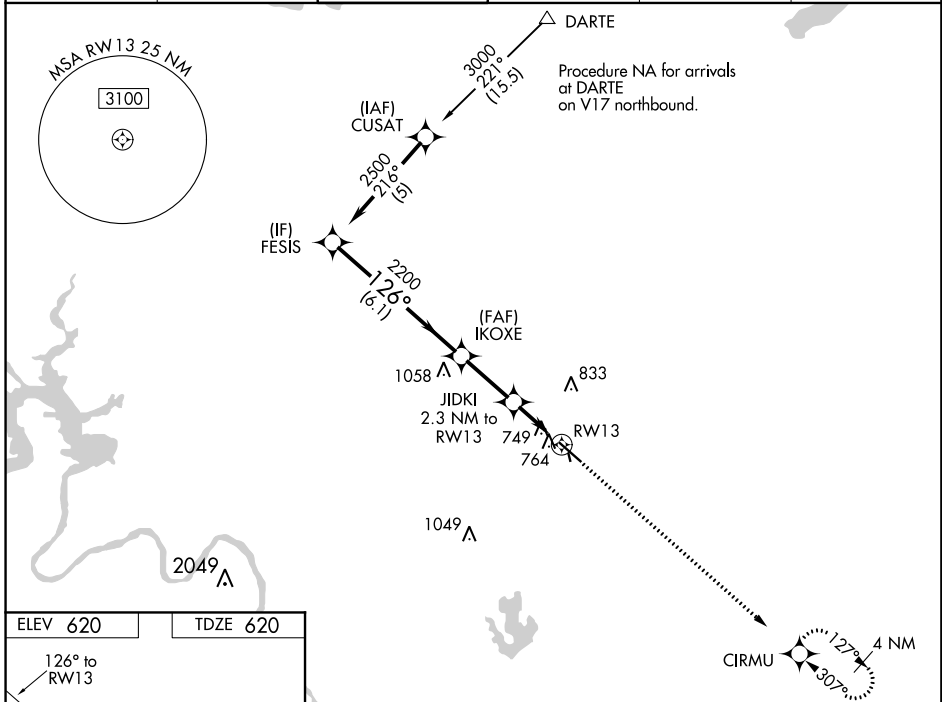
RNAV (GPS) RWY 13

AUSTIN EXECUTIVE (EDC)

▼ Baro-VNAV NA when using Austin-Bergstrom Intl altimeter setting. For uncompensated Baro-VNAV systems, LNAV/VNAV NA below -16°C (4°F) or above 47°C (116°F). DME/DME RNP-0.3 NA.
▲ Visibility reduction by helicopters NA. When local altimeter setting not received, use Austin-Bergstrom Intl altimeter setting and increase all DA 42 feet; increase all MDA 60 feet. VDP NA with Austin-Bergstrom Intl altimeter setting. Circling NA to Rwy 16 and 34.

MISSED APPROACH: Climb to 2100 direct CIRMU and hold.

AWOS-3 118.825	APP CON 127.225 317.65	EXECUTIVE TOWER★ 120.3 (CTAF) 0	GND CON 119.45	CLNC DEL 126.025 (when tower closed)	UNICOM 122.975
--------------------------	----------------------------------	---	--------------------------	---	--------------------------



CATEGORY	A	B	C	D
LPV DA		870-1	250 (300-1)	
LNAV/VNAV DA		1090-1¾	470 (500-1¾)	
LNAV MDA	1060-1	440 (500-1)	1060-1¼ 440 (500-1¼)	1060-1½ 440 (500-1½)
CIRCLING	1100-1	480 (500-1)	1100-1½ 480 (500-1½)	1180-2 560 (600-2)

MIRL Rwy 13-31
REIL Rwy 13 and 31

WAAS CH 45916 W31A	APP CRS 306°	Rwy Idg 6025 TDZE 612 Apt Elev 620
--	------------------------	---

RNAV (GPS) RWY 31

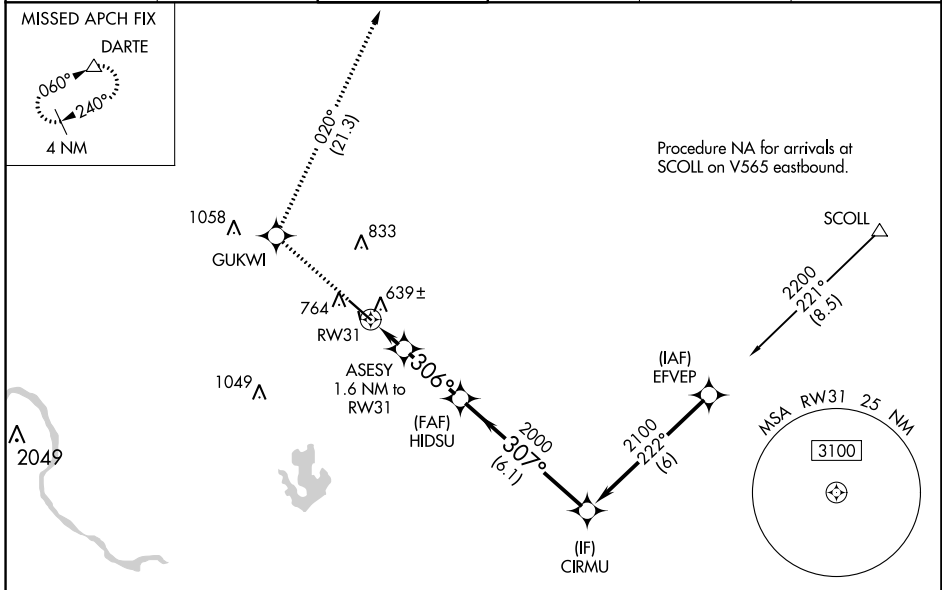
AUSTIN EXECUTIVE (EDC)

RNP APCH.

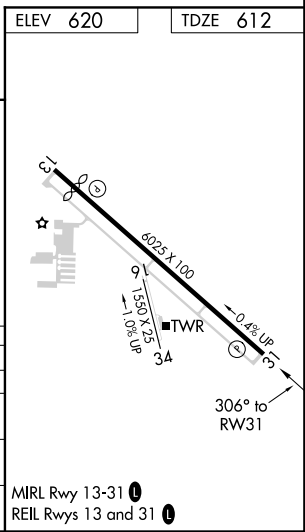
⚠ Baro-VNAV NA when using Austin-Bergstrom Intl altimeter setting. For uncompensated Baro-VNAV systems, LNAV/VNAV NA below -16°C or above 54°C. When local altimeter setting not received, use Austin-Bergstrom Intl altimeter setting and increase all DA 42 feet; increase all MDA 60 feet. Increase LNAV/VNAV all Cats visibility 1/8 SM. VDP NA with Austin-Bergstrom Intl altimeter setting. Circling NA to Rwy 16, 34.

MISSED APPROACH: Climb to 3500 direct GUKWI and on track 020° to DARTE and hold.

AWOS-3 118.825	APP CON 127.225 317.65	EXECUTIVE TOWER★ 120.3 (CTAF) 0	GND CON 119.45	CLNC DEL 126.025 (when tower closed)	UNICOM 122.975
--------------------------	----------------------------------	--	--------------------------	---	--------------------------



ELEV 620	TDZE 612			
3500	GUKWI	DARTE	CIRMU	
↑	✧	△		
	tr 020°			
*LNAV only.				
CATEGORY	A	B	C	D
LPV DA		812-3/4	200 (200-3/4)	
LNAV/VNAV DA		909-7/8	297 (300-7/8)	
LNAV MDA		900-1	288 (300-1)	
CIRCLING	1140-1 520 (600-1)	1160-1 540 (600-1)	1160-1 1/2 540 (600-1 1/2)	1220-2 600 (600-2)



SC-3, 12 SEP 2019 to 10 OCT 2019

SC-3, 12 SEP 2019 to 10 OCT 2019