

AEROZ ONE DEPARTURE (RNAV)  
(AEROZ1.AEROZ) 07DECI17

AWOS-3  
118.825  
CLNC DEL  
126.025 when tower closed  
EXECUTIVE TOWER ★  
120.3 (CTAF)  
AUSTIN DEP CON  
127.225 317.65

SAN ANGELO  
SJT

TAKEOFF MINIMUMS:  
Rwys 16, 34: NA-Environmental  
Rwys 13, 31: Standard.

TOP ALTITUDE:  
ASSIGNED BY ATC

NOTE: RADAR required.  
NOTE: DME/DME/IRU or GPS required.  
NOTE: RNAV-1.



FL180  
293°  
(91)

AEROZ

293°  
(33)

AMUSE  
5000

NOTE: Chart not to scale.



DEPARTURE ROUTE DESCRIPTION

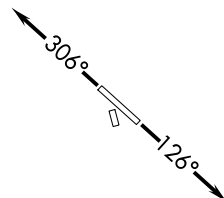
TAKEOFF RWY 13: Climb heading 126° or as assigned by ATC for RADAR vectors to cross AMUSE at or above 5000. Thence. . . .

TAKEOFF RWY 31: Climb heading 306° or as assigned by ATC for RADAR vectors to cross AMUSE at or above 5000. Thence. . . .

. . . .on track 293° to AEROZ, then on SAN ANGELO TRANSITION. Maintain altitude assigned by ATC. Expect filed altitude 10 minutes after departure.

SAN ANGELO TRANSITION (AEROZ1.SJT)

AUSTIN, TEXAS  
AUSTIN EXECUTIVE (EDC)



(AEROZ1.AEROZ) 182000  
AEROZ ONE DEPARTURE (RNAV)

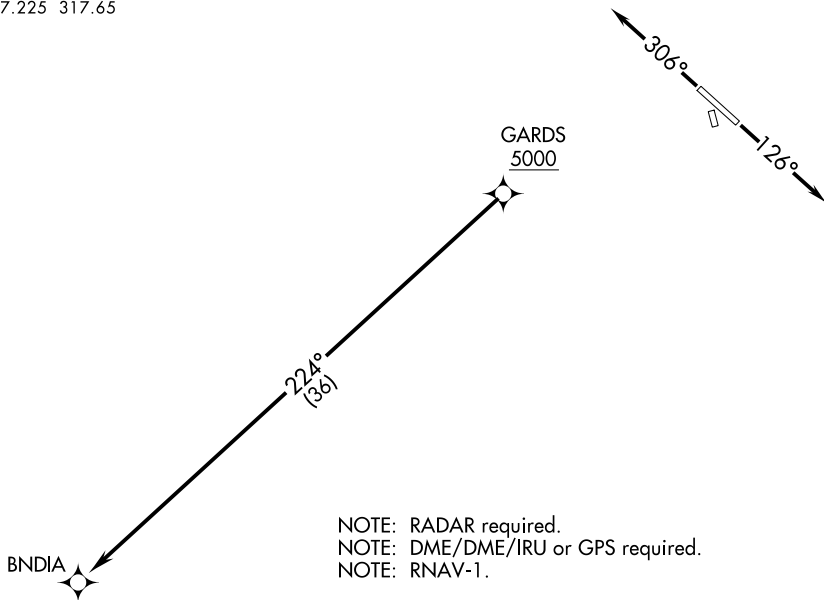
AL-5891 (FAA)

AUSTIN EXECUTIVE(EDC)  
AUSTIN, TEXAS

# BNDIA TWO DEPARTURE (RNAV)

AWOS-3  
 118.825  
 CLNC DEL  
 126.025 when tower closed  
 EXECUTIVE TOWER ★  
 120.3 (CTAF)  
 AUSTIN DEP CON  
 127.225 317.65

**TOP ALTITUDE:  
 ASSIGNED BY ATC**



NOTE: RADAR required.  
 NOTE: DME/DME/IRU or GPS required.  
 NOTE: RNAV-1.

TAKEOFF MINIMUMS:  
 Rwy 16, 34: NA-Environmental.  
 Rwy 13, 31: Standard.

NOTE: Chart not to scale.

### DEPARTURE ROUTE DESCRIPTION

TAKEOFF RWY 13: Climb heading 126° or as assigned by ATC for RADAR vectors to cross GARDS at or above 5000. Thence. . .

TAKEOFF RWY 31: Climb heading 306° or as assigned by ATC for RADAR vectors to cross GARDS at or above 5000. Thence. . .

. . . on track 224° to BNDIA. Maintain altitude assigned by ATC. Expect filed altitude 10 minutes after departure.

# BNDIA TWO DEPARTURE (RNAV)

# ELOEL TWO DEPARTURE (RNAV)

AUSTIN, TEXAS

**TOP ALTITUDE:  
ASSIGNED BY ATC**

AWOS-3  
118.825  
CLNC DEL  
126.025 when tower closed  
EXECUTIVE TOWER ★  
120.3 (CTAF)  
AUSTIN DEP CON  
127.225 317.65



ABILENE  
ABI

FL180  
307°  
(120)

FORSS

KLNGR

10500  
\*2700  
338°  
(10)

10500  
\*2700  
329°  
(18)

ELOEL

338°  
(10)

WLMRT  
5000

NOTE: RADAR required.  
NOTE: DME/DME/IRU or GPS required.  
NOTE: RNAV-1.

TAKEOFF MINIMUMS:  
Rwys 16, 34: NA-Environmental.  
Rwys 13, 31: Standard.

NOTE: Chart not to scale.



## DEPARTURE ROUTE DESCRIPTION

TAKEOFF RWY 13: Climb heading 126° or as assigned by ATC for RADAR vectors to cross WLMRT at or above 5000, thence. . .

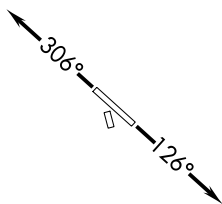
TAKEOFF RWY 31: Climb heading 306° or as assigned by ATC for RADAR vectors to cross WLMRT at or above 5000, thence. . .

. . . on track 338° to ELOEL, then on transition. Maintain altitude assigned by ATC. Expect filed altitude 10 minutes after departure.

ABILENE TRANSITION (ELOEL2.ABI)

FORSS TRANSITION (ELOEL2.FORSS)

KLNGR TRANSITION (ELOEL2.KLNGR)



SC-3, 12 SEP 2019 to 10 OCT 2019

SC-3, 12 SEP 2019 to 10 OCT 2019

# ELOEL TWO DEPARTURE (RNAV)

(ELOEL2.ELOEL) 07DEC17

AUSTIN, TEXAS

AUSTIN EXECUTIVE (E'DC)

ILEXY TWO DEPARTURE (RNAV)  
(ILEXY2.ILEXY) 07DEC17

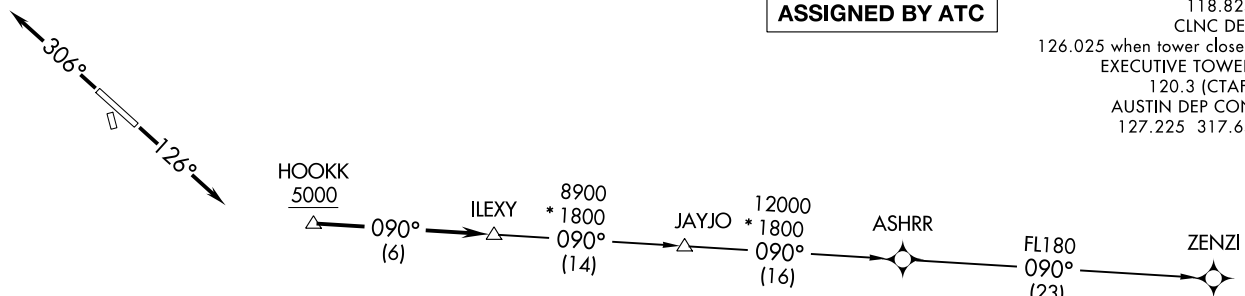
(ILEXY2.ILEXY) 18200  
ILEXY TWO DEPARTURE (RNAV)

AL-5891 (FAA)

AUSTIN EXECUTIVE (EDC)  
AUSTIN, TEXAS

**TOP ALTITUDE:  
ASSIGNED BY ATC**

AWOS-3  
118.825  
CLNC DEL  
126.025 when tower closed  
EXECUTIVE TOWER ★  
120.3 (CTAF)  
AUSTIN DEP CON  
127.225 317.65



NOTE: RADAR required.  
NOTE: DME/DME/IRU or GPS required.  
NOTE: RNAV-1.  
NOTE: Houston terminal area arrivals expect routing from ILEXY.  
NOTE: JAYJO transition to join V306 only.

TAKEOFF MINIMUMS:  
Rwys 16, 34: NA-Environmental.  
Rwys 13, 31: Standard.

NOTE: Chart not to scale.

**DEPARTURE ROUTE DESCRIPTION**

TAKEOFF RWY 13: Climb heading 126° or as assigned by ATC for RADAR vectors to cross HOOKK at or above 5000, thence. . . .  
TAKEOFF RWY 31: Climb heading 306° or as assigned by ATC for RADAR vectors to cross HOOKK at or above 5000, thence. . . .  
. . . .on track 090° to ILEXY, then on transition. Maintain altitude assigned by ATC. Expect filed altitude 10 minutes after departure.

JAYJO TRANSITION (ILEXY2.JAYJO)  
ZENZI TRANSITION (ILEXY2.ZENZI)

AUSTIN, TEXAS  
AUSTIN EXECUTIVE (EDC)

# MUCKY TWO DEPARTURE(RNAV)

**TOP ALTITUDE:  
ASSIGNED BY ATC**

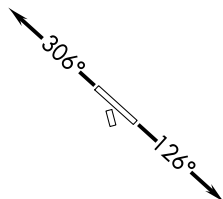
AWOS-3  
118.825  
CLNC DEL  
126.025 when tower closed  
EXECUTIVE TOWER ★  
120.3 (CTAF)  
AUSTIN DEP CON  
127.225 317.65

MUCKY



279°  
(35)

PAYDA  
5000



TAKEOFF MINIMUMS:  
Rwys 16, 34: NA-Environmental.  
Rwys 13, 31: Standard.

NOTE: RADAR required.  
NOTE: DME/DME/IRU or GPS required.  
NOTE: RNAV-1.

NOTE: Chart not to scale.



## DEPARTURE ROUTE DESCRIPTION

TAKEOFF RWY 13: Climb heading 126° or as assigned by ATC for RADAR vectors to cross PAYDA at or above 5000, thence. . . .

TAKEOFF RWY 31: Climb heading 306° or as assigned by ATC for RADAR vectors to cross PAYDA at or above 5000, thence. . . .

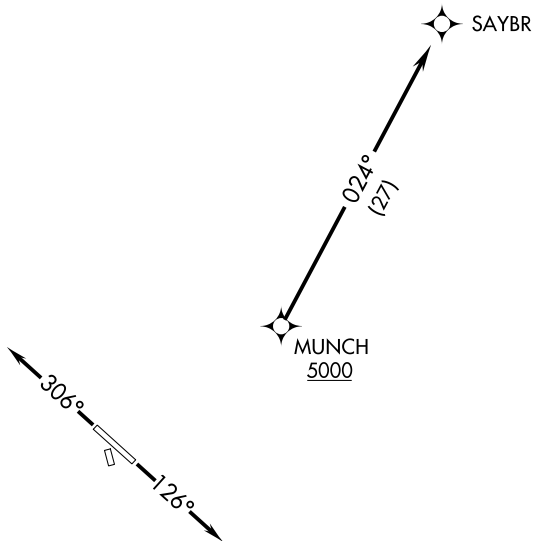
. . . .on track 279° to MUCKY. Maintain altitude assigned by ATC. Expect filed altitude 10 minutes after departure.

# SAYBR TWO DEPARTURE (RNAV)

**TOP ALTITUDE:  
ASSIGNED BY ATC**

AWOS-3  
118.825  
CLNC DEL  
126.025 when tower closed  
EXECUTIVE TOWER ★  
120.3 (CTAF)  
AUSTIN DEP CON  
127.225 317.65

**TAKEOFF MINIMUMS:**  
Rwys 16, 34: NA-Environmental.  
Rwys 13, 31: Standard.



- NOTE: RADAR required.
- NOTE: DME/DME/IRU or GPS required.
- NOTE: RNAV-1
- NOTE: For DFW Terminal Area Arrivals at FL230 or below only.

NOTE: Chart not to scale.



## DEPARTURE ROUTE DESCRIPTION

TAKEOFF RWY 13: Climb heading 126° or as assigned by ATC for RADAR vectors to cross MUNCH at or above 5000, thence. . . .

TAKEOFF RWY 31: Climb heading 306° or as assigned by ATC for RADAR vectors to cross MUNCH at or above 5000, thence. . . .

. . . .on track 024° to SAYBR. Maintain altitude assigned by ATC.  
Expect filed altitude 10 minutes after departure.