

WAAS CH 77901 W14A	APP CRS 138°	Rwy Idg TDZE 75 Apt Elev 75
--	------------------------	---

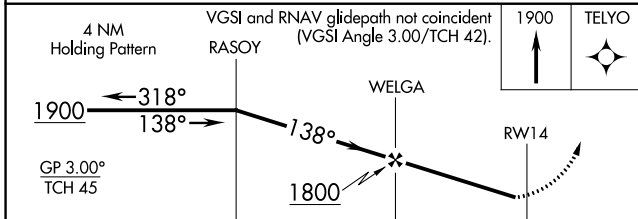
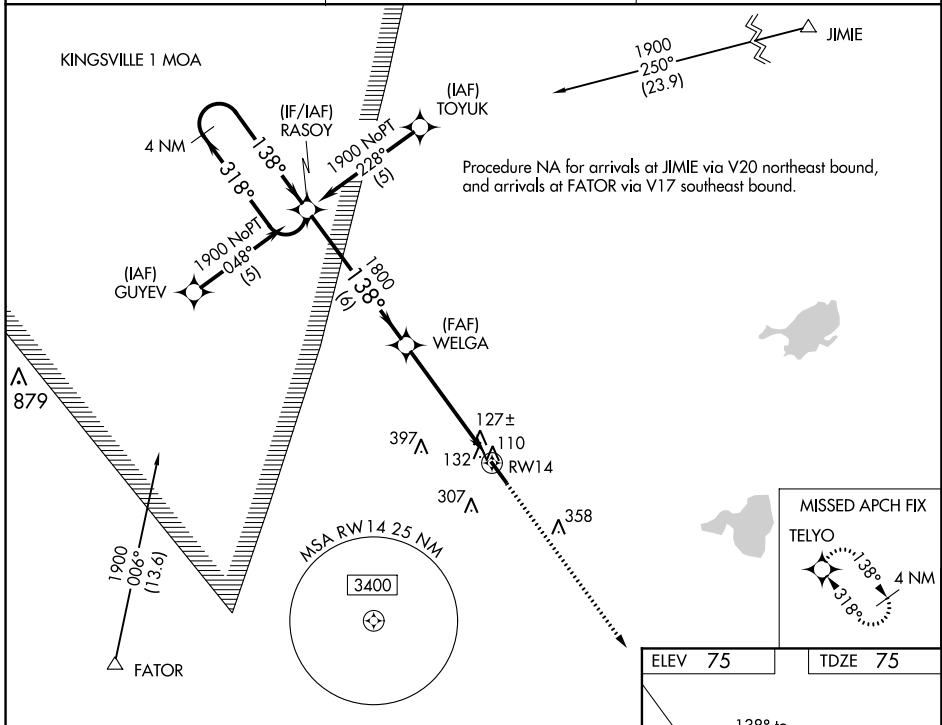
RNAV (GPS) RWY 14

SOUTH TEXAS INTL AT EDINBURG (E/BG)

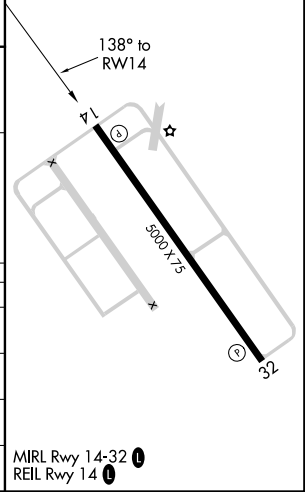
▼ Visibility reduction by helicopters NA. DME/DME RNP-0.3 NA. For uncompensated Baro-VNAV systems, LNAV/VNAV NA below -15°C (5°F) or above 48°C (120°F).

MISSED APPROACH: Climb to 1900 direct TELYO and hold.

AWOS-3 118.025	CORPUS APP CON 121.0 377.2	UNICOM 122.8 (CTAF) 0
--------------------------	--------------------------------------	--



ELEV 75	TDZE 75
----------------	----------------



CATEGORY	A	B	C	D
LPV DA		325-1	250 (300-1)	
LNAV/VNAV DA		441-1¼	366 (400-1¼)	
LNAV MDA	440-1	365 (400-1)		440-1¼ 365 (400-1¼)
CIRCLING	500-1¼ 425 (500-1¼)	540-1¼ 465 (500-1¼)	620-1½ 545 (600-1½)	640-2 565 (600-2)

MIRL Rwy 14-32 **0**
REIL Rwy 14 **0**

SC-3, 21 MAY 2020 to 18 JUN 2020

SC-3, 21 MAY 2020 to 18 JUN 2020

WAAS CH 70701 W32A	APP CRS 318°	Rwy Idg TDZE 73 Apt Elev 75
--	------------------------	---

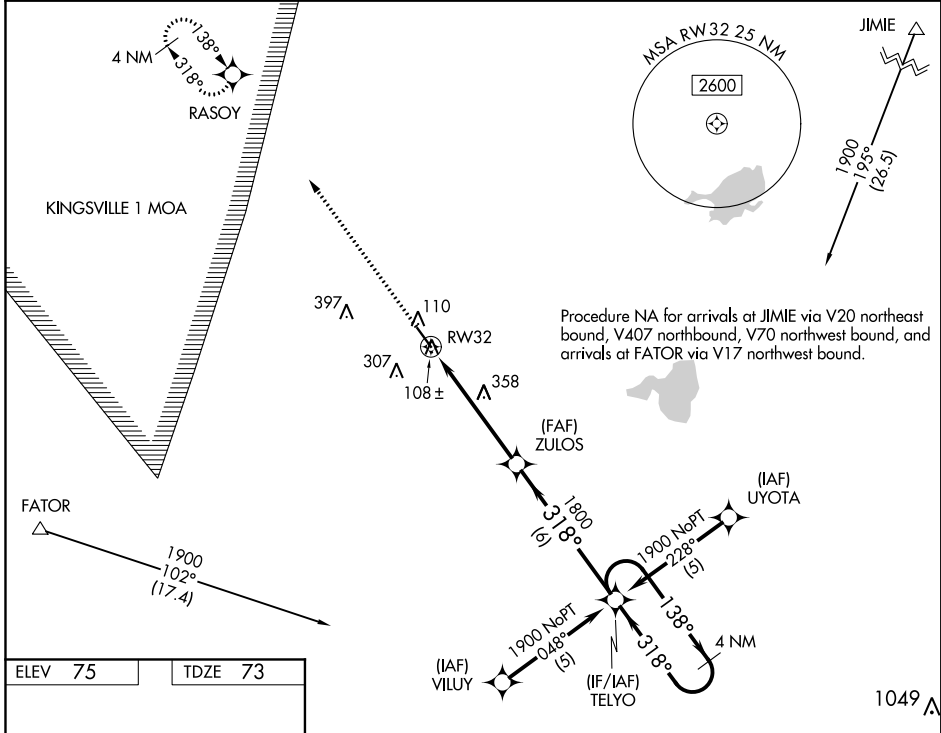
RNAV (GPS) RWY 32

SOUTH TEXAS INTL AT EDINBURG (E.B.G)

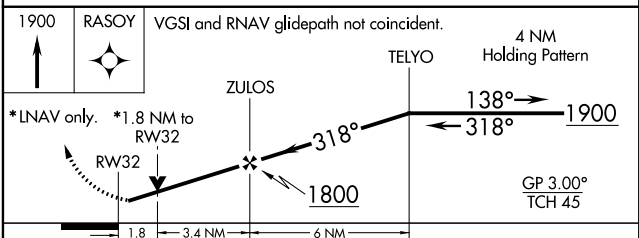
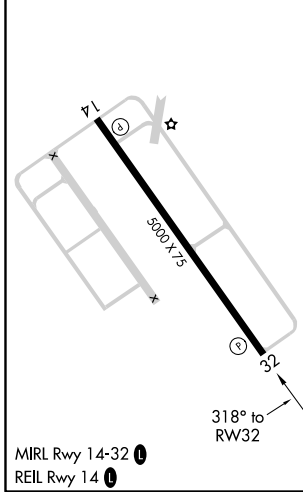
Visibility reduction by helicopters NA. DME/DME RNP-0.3 NA. For uncompensated Baro-VNAV systems, LNAV/VNAV NA below -15°C (5°F) or above 48°C (120°F).

MISSED APPROACH: Climb to 1900 direct RASOY and hold.

AWOS-3 118.025	CORPUS APP CON 121.0 377.2	UNICOM 122.8 (CTAF) 0
--------------------------	--------------------------------------	---------------------------------



ELEV 75	TDZE 73
---------	---------



CATEGORY	A	B	C	D
LPV DA		323-3/4	250 (300-3/4)	
LNAV/VNAV DA		361-1	288 (300-1)	
LNAV MDA	660-1	587 (600-1)	660-1 1/2 587 (600-1 1/2)	660-1 3/4 587 (600-1 3/4)
CIRCLING	660-1	585 (600-1)	660-1 1/2 585 (600-1 1/2)	660-2 585 (600-2)

SC-3, 21 MAY 2020 to 18 JUN 2020

SC-3, 21 MAY 2020 to 18 JUN 2020