

TACAN DYS Chan 63	APCH CRS 169°	Rwy Idg 13,500	TDZE 1790	Appt Elev 1790
----------------------	------------------	-------------------	--------------	-------------------

JAL-2 [USAFI]

DYESS AFB (KDYS)

* When ALS inop, increase CAT DCE vis to 1 1/4 miles.
 ** Circling to other than Rwy 34 NA

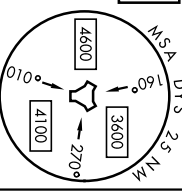
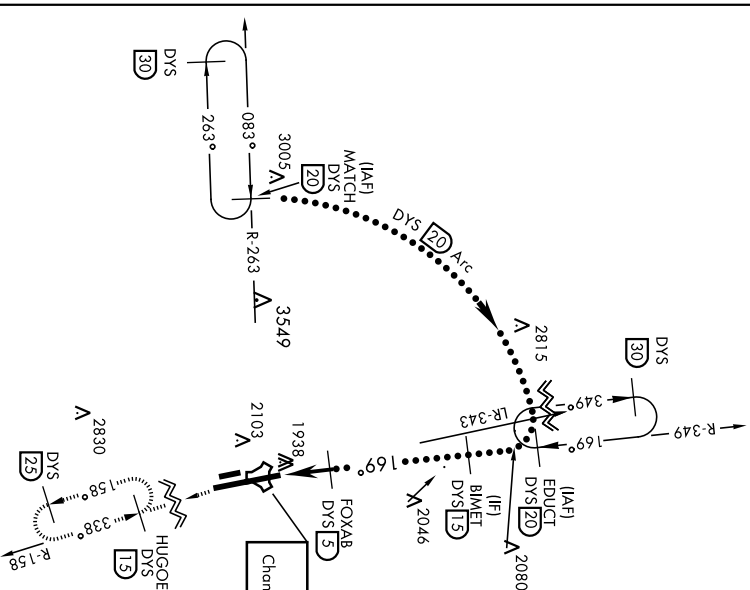
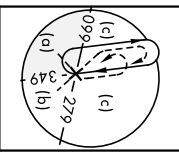


MISSED APPROACH: Climb to 4000 via
 DYS TACAN R-158 to HUGOE and hold.

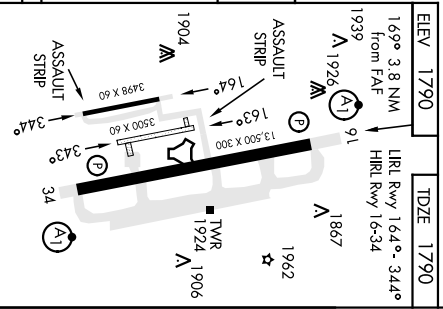
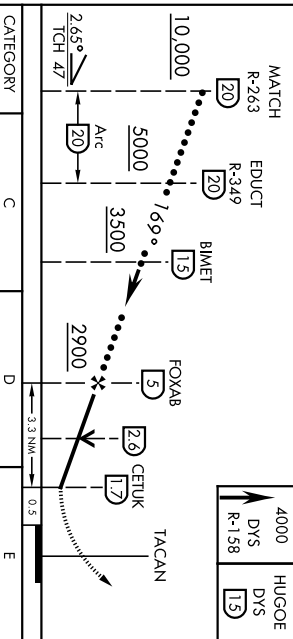
ATIS *	ABILENE APP CON	DYESS TOWER
269.175	125.0 338.3 EAST 127.2 282.3 WEST	133.0 257.675

GND CON	118.35 275.8
---------	--------------

ASR	
-----	--



EMERG SAFE ALT 100 NM 4600



CATEGORY	C	D	E
S-1-6 *	2220 / 40	430 (500-34)	

FAF to MAP 3.3 NM					
Knots	120	140	160	180	200
Min:Sec	1:39	1:25	1:14	1:06	0:59

CIRCLING **	2460-1 3/4 670 (700-1 1/2)	2460-2 670 (700-2)	2460-2 1/2 670 (700-2 1/2)
-------------	-------------------------------	-----------------------	-------------------------------

DYESS AFB (KDYS)

ABILENE, TEXAS
 Amhd 3 10NOV16
 32°25'N-99°51'W

HI-TACAN X RWY 16

TACAN DYS Chan 63	APCH CRS 338°	Rwy Idg 13.500	TDZE 1788
		Appt Elev 1790	

JAL-2 (USAFI)

DYESS AFB (KDYS)

* When ALS Inop, increase CAT CDE vis to 1 3/8 miles.
 ** Circling to other than Rwy 16 NA.

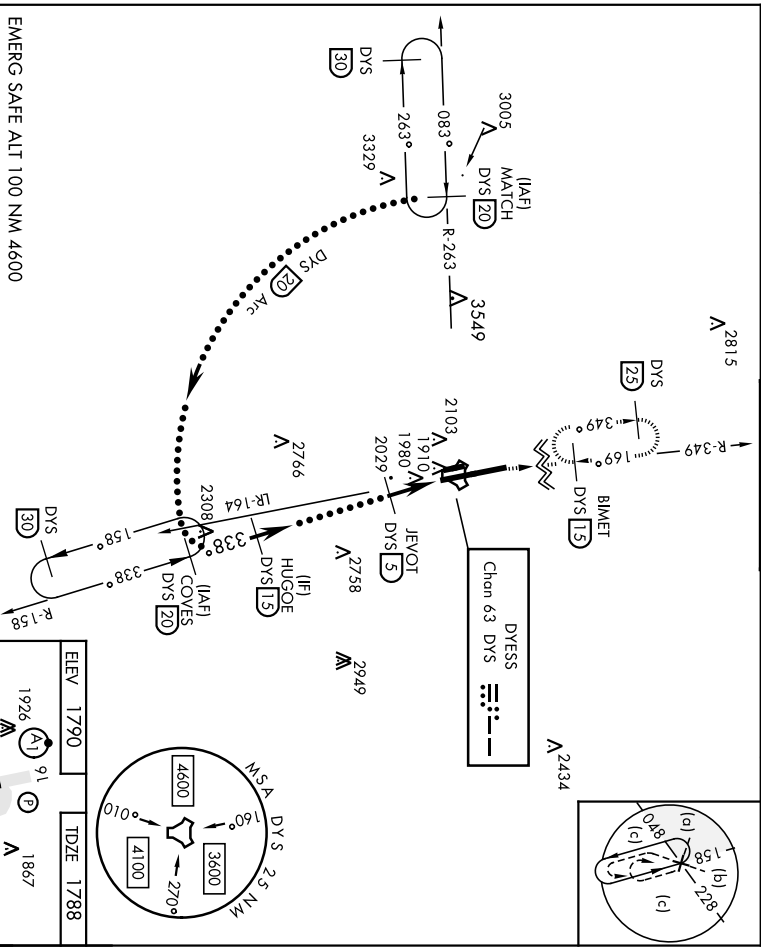
ALSF-1 A1

MISSED APPROACH: Climb to 4000 via
 DYS TACAN R-349 to BIMET and hold.

ATIS *	ABILENE APP CON	DYESS TOWER
269.175	125.0 338.3 EAST 127.2 282.3 WEST	133.0 257.675

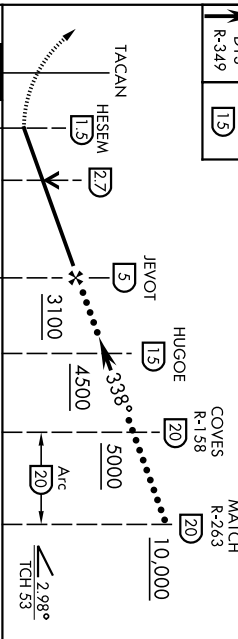
GND CON	118.35 275.8
---------	--------------

ASR



EMERG SAFE ALT 100 NM 4600

4000
 DYS
 R-349
 BIMET
 DYS
 15
 VCSI and descent angles not coincident
 (VCSI Angle 2.50/TCH 53)



CATEGORY	C	D	E
S-34 *	2280/50	492 (500-1)	
DIRCLING **	2460-1 3/4 670 (700-1 1/4)	2460-2 670 (700-2)	2460-2 1/4 670 (700-2 1/4)

LRL Rwy 164° - 344°	1904	1926	1867	1662
HRL Rwy 16-34	1904	1926	1867	1662
FAF to MAP 3.5 NM	1904	1926	1867	1662

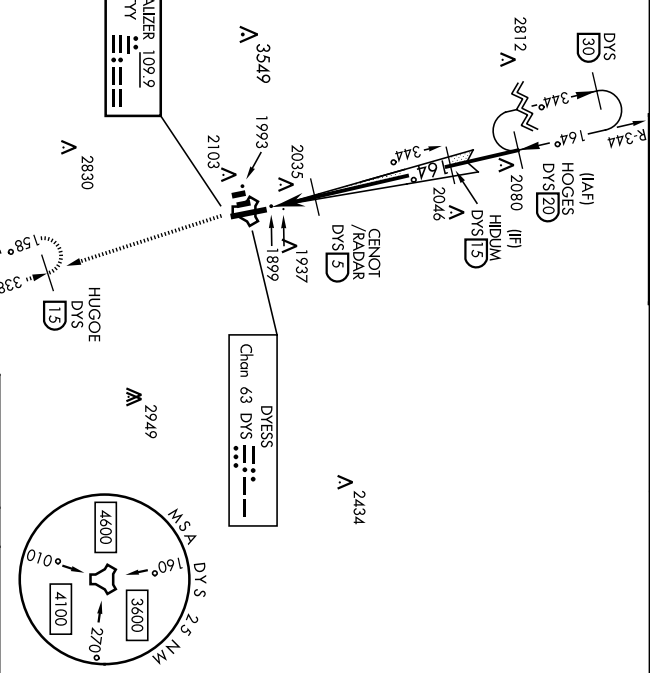
Mins:Sec	1:20	1:40	1:60	1:80	2:00
	1:45	1:30	1:19	1:10	1:03

ABILENE, TEXAS
 Andh 3 10NOV16
 32°25'N-99°51'W
 DYESS AFB (KDYS)

ILS or LOC W Rwy 16

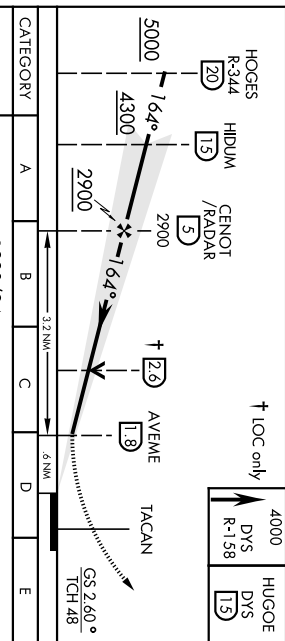
DYESS AFB (KDYS)

LOC L1TY 109.9	APCH CRS 164°	Rwy Idg TDZE App'l Elev 1790 1790	AL-2 [USAF]
* When ALS inop, increase all CAT RVR to 40 and vis to 3/4 mile. ** When ALS inop, increase CAT AB RVR to 55 and vis to 1 mile. CAT CDE vis to 1 1/2 miles.		ALSF-1 (A1)	MISSED APPROACH: Climb to 4000 via DYS TACAN R-158 to HUGOE and hold.
ATIS * 269.175	ABILENE APP CON 125.0 338.3 EAST 127.2 282.3 WEST	DYESS TOWER 133.0 257.675	GND CON 118.35 275.8
*** Circling to other than Rwy 34 NA.		ASR	



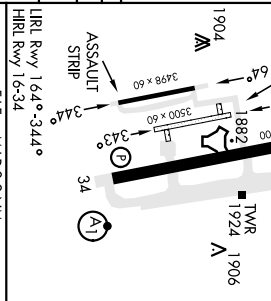
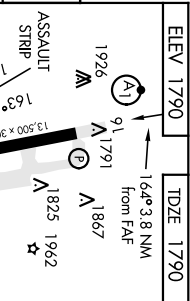
RADAR or DME REQUIRED

EMERG SAFE ALT 100 NM 4600



CATEGORY	A	B	C	D	E
S-ILS 16 *	1990/24 200 (200-1/2)				
S-LOC 16 ***	2220/24 430 (500-1/2)	2220/40 430 (500-3/4)			

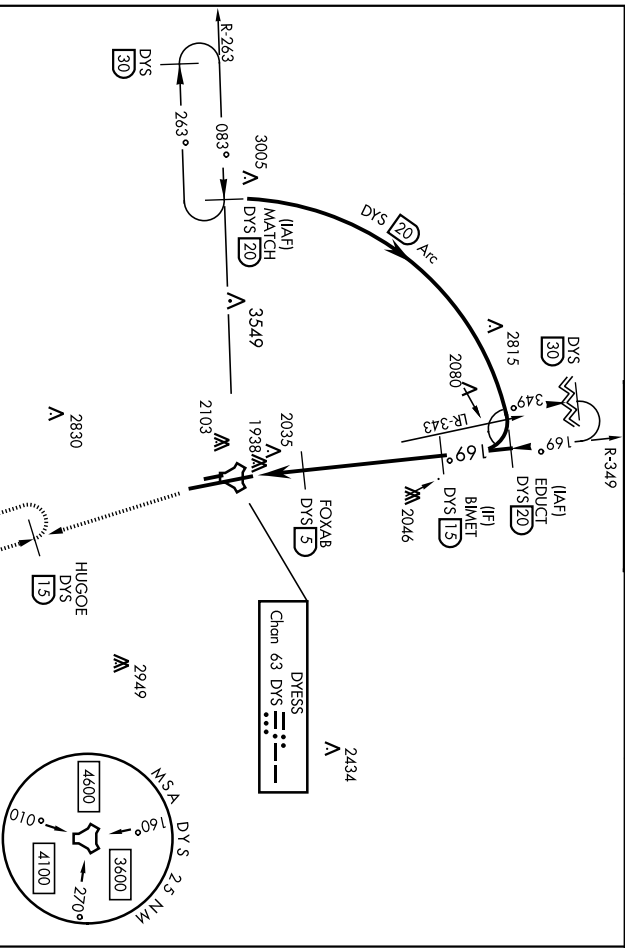
CIRCLING**	2300-1	2320-1	2460-1 3/4	2460-2	2460-2 1/4
510 (600-1)	530 (600-1)	670 (700-1 1/2)	670 (700-2)	670 (700-2 1/4)	



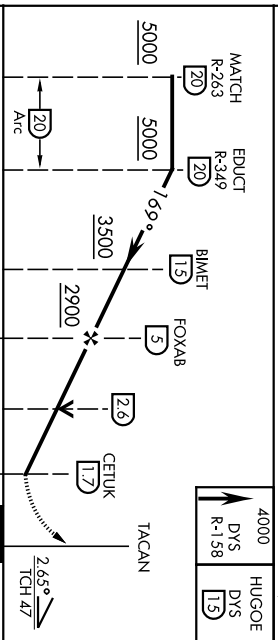
LRL Rwy 164° -344°	60	90	120	150	180
HRL Rwy 16-34	3:12	2:08	1:36	1:17	1:04
FAF to MAP 3.2 NM	DYESS AFB (KDYS)				

TACAN DYS Chan 63	APCH CRS 169°	Raw Idg 13 500	TDZE 1790	Alt Elev 1790	AL-2 [USAF]	AISF-1 A1	MISSED APPROACH: Climb to 4000 via DYS TACAN R-158 to HUGOE and hold.	DYESS AFB (KDYS)
ATIS * 269.175	ABILENE APP CON 125.0 338.3 EAST 127.2 282.3 WEST	DYESS TOWER 133.0 257.675	GND CON 118.35 275.8	ASR				

* When AIS Inop, Increase CAT AB RVR to 55 and vis to 1 mile, CAT CDE vis to 1 1/4 miles.
** Circling to other than RWY 34 NA



EMERG SAFE ALT 100 NM 4600



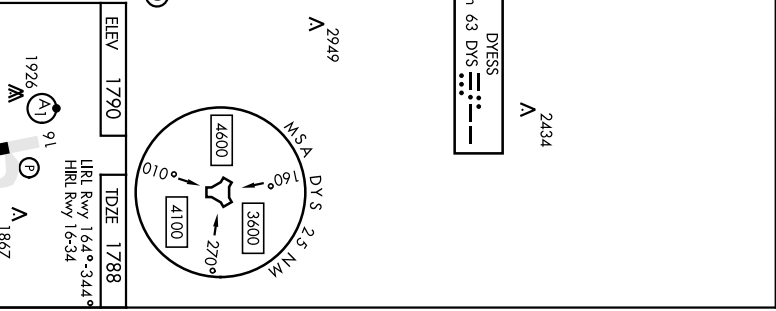
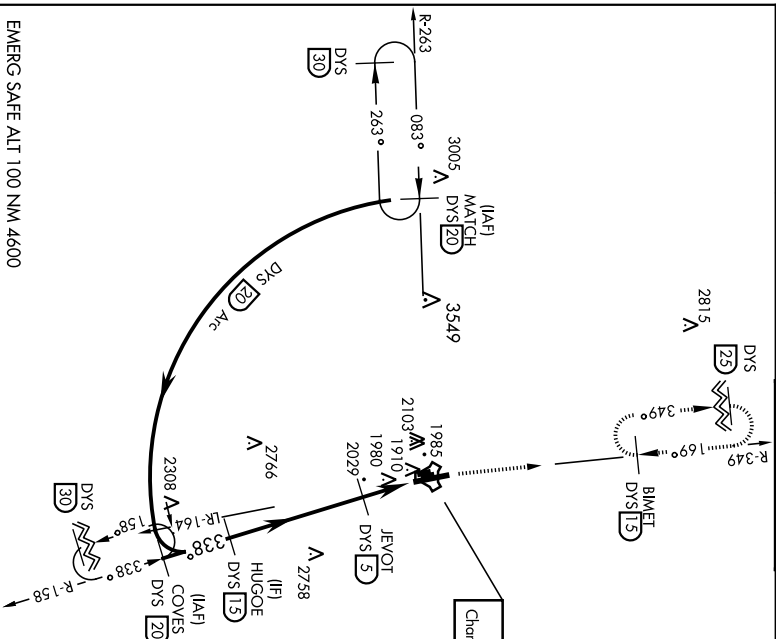
CATEGORY	A	B	C	D	E
S-1 & *	2220/24	430 (500-1/2)	2220/40	430 (500-1/2)	
** CIRCLING	2300-1 510 (600-1)	2320-1 530 (600-1)	2460-1 3/4 670 (700-1 1/2)	2460-2 670 (700-2)	2460-2 1/4 670 (700-2 1/2)
FAF to MAP 3.3 NM					
	Knots	60	90	120	150
	Min:Sec	3:18	2:12	1:39	1:19

ABILENE, TEXAS
Amhd 3 10NOV16
32°25'N-99°51'W
DYESS AFB (KDYS)
TACAN W RMY 16

TACAN W RWY 34

DYESS AFB (KDYS)

TACAN DYS Chan 63	APCH CRS 338°	Run-Ideg TDZE Apt/Elev 1788 1790	AL-2 (USAFI)	ALSF-1 	MISSED APPROACH: Climb to 4000 via DYS TACAN R-349 to BIOMET and hold.
* When A15 Inop, increase CAT AB RWY to 55 and vis to 1 mile. CAT CDE vis to 1 1/2 miles. ** Circling to other than RWY 16 N/A.		ABILENE APP CON A15 * 269,175	DYESS TOWER 133.0 257.675	GND CON 118.35 275.8	ASR




EMERG SAFE ALT 100 NM 4600

4000 DYS R-349	BIOMET DYS 15	VGSJ and descent angles not coincident (VGSJ Angle 2.50/TCH 53)				
TACAN		JFVOT 5	HUGOE 15	COVERS R-158 20		
HESEM 15		3100		MATCH R-263 20		
TCH 35		4500		COVERS R-263 20		
A		5000		COVERS R-263 20		
B		5000		COVERS R-263 20		
C		5000		COVERS R-263 20		
D		5000		COVERS R-263 20		
E		5000		COVERS R-263 20		
CATEGORY	A	B	C	D	E	
5-34 *	2280/24	492 (500-1/2)	2280/50	492 (500-1)		
** CIRCLING	2300-1	2320-1	2460-1 1/4	2460-2	2460-2 1/4	
	510 (600-1)	530 (600-1)	670 (700-1 1/2)	670 (700-2)	670 (700-2 1/4)	
FAF to MAP 3.5 NM		Knots				
		60 90 120 150 180				
Mins:Sec		3:30 2:20 1:45 1:24 1:10				

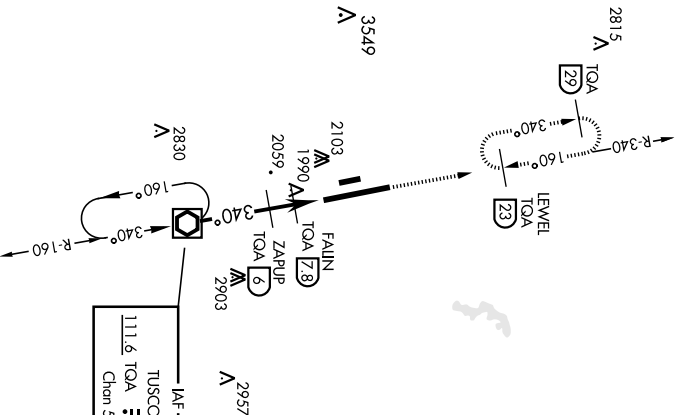
ABILENE, TEXAS
Amhd 3 10NOV16
32°25'N 99°51'W
DYESS AFB (KDYS)
TACAN W RWY 34

VOR/DME RWY 34

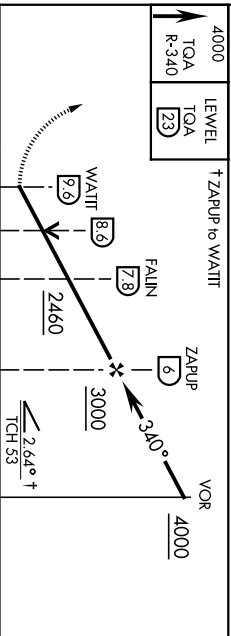
ABILENE, TEXAS

VOR/DME TOA 111.6 Chan 53	APCH CRS 340°	Rwy Idg 1738 TDZE Aptl Elev 1790	AL-2 [USAF]	ALSF-1 	MISSED APPROACH: Climb to 4000 via TOA VOR/DME R-340 to LEWEL and hold.	DYESS AFB (KDYS)
ATIS * 269.175	ABILENE APP CON 125.0 338.3 EAST 127.2 282.3 WEST	DYESS TOWER 133.0 257.675	GND CON 118.35 275.8	ASR		

** When ALS Inop, increase CAT AB RVR to 55 and vis to 1 mile, CAT CDE
RVR vis to 1 1/2 miles.
** Circling to other than Rwy 16 N/A



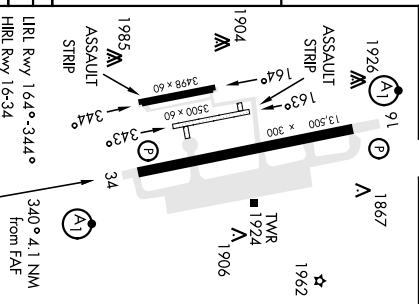
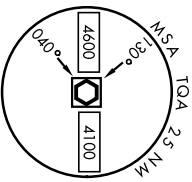
EMERG SAFE ALT 100 NM 4600



CATEGORY	A	B	C	D	E
S-34 *	2260/24	472 (500-1/2)	2260/50	472 (500-1)	

** CIRCLING	2300-1 510 (600-1)	2320-1 530 (600-1)	2460-1 3/4 670 (700-1 3/4)	2460-2 670 (700-2)	2460-2 1/2 670 (700-2 1/2)
-------------	-----------------------	-----------------------	-------------------------------	-----------------------	-------------------------------

ELEV 1790	TDZE 1788
-----------	-----------



HLR Rwy 16-A-34 HLR Rwy 16-34	FAE to MAP 3.6 NM
Knots	60 90 120 150 180
Mts:Sec	3:36 2:24 1:48 1:26 1:12

ABILENE, TEXAS

Amhd 3 10NOV16

32°25' -99°51'W

DYESS AFB (KDYS)

VOR/DME RWY 34

RADAR INSTRUMENT APPROACH MINIMUMS

AMARILLO, TX

Amdt 16B, 22APR21 (21112) (FAA)

ELEV **3607**

RICK HUSBAND AMARILLO INTL (AMA)

RADAR-1 119.5 307.0 **▽ ▲**

	<u>RWY</u>	<u>GP/TCH/RPI</u>	<u>CAT</u>	<u>DA/ MDA-VIS</u>	<u>HAT/ HAA</u>	<u>CEIL-VIS</u>	<u>CAT</u>	<u>DA/ MDA-VIS</u>	<u>HAT/ HAA</u>	<u>CEIL-VIS</u>
ASR	22		ABC	3960-¾	367	(400-¾)	DE	3960-1¼	367	(400-1¼)
	31		ABCD	3960-1	362	(400-1)	E	NA		
	13		AB	4040-1	437	(500-1)	CD	4040-1¼	437	(500-1¼)
			E	NA						
	4		AB	4160/24	555	(600-½)	C	4160/50	555	(600-1)
			D	4160/60	555	(600-1¼)	E	4160-1½	555	(600-1½)
ⓐ CIRCLING	ALL RWY		AB	4160-1	553	(600-1)	C	4240-1¾	633	(700-1¾)
			D	4280-2¼	673	(700-2¼)	E	4460-3	853	(900-3)

When control tower closed, procedure NA.

DYESS AFB (KDYS), TX (Abilene) (Amdt 3, 15344 USAF)

ELEV **1790**

RADAR - (E) 121.3 127.2 270.3 282.3

	<u>RWY</u>	<u>GS/TCH/RPI</u>	<u>CAT</u>	<u>DH/ MDA-VIS</u>	<u>HAT/ HAA</u>	<u>CEIL-VIS</u>
ASR	34 ¹		AB	2260/24	472	(500-½)
			CDE	2260/50	472	(500-1)
	16 ¹		AB	2300/24	510	(600-½)
			CDE	2300/55	510	(600-1)
ⓐ CIR	16 ²		A	2300-1	510	(600-1)
			B	2320-1¼	530	(600-1¼)
			C	2460-1¾	670	(700-1¾)
			D	2460-2	670	(700-2)
			E	2460-2¼	670	(700-2¼)
	34 ³		A	2300-1	510	(600-1)
			B	2320-1	530	(600-1)
			C	2460-1¾	670	(700-1¾)
			D	2460-2	670	(700-2)
			E	2460-2¼	670	(700-2¼)

¹When ALS inop, increase CAT AB RVR to 55 and vis to 1 mile, CAT CDE vis to 1¾ miles.

²Circling to other than Rwy 34 NA.

³Circling to other than Rwy 16 NA.

22 FEB 2024 to 21 MAR 2024


22 FEB 2024 to 21 MAR 2024

RADAR INSTRUMENT APPROACH MINIMUMS

RADAR INSTRUMENT APPROACH MINIMUMS

FORT WORTH NAS JRB (CARSWELL FLD) (NFW), Fort Worth, TX

Amdt 1 18MAY23 (23138) (USN)

RADAR - (E)¹ 128.775 371.875 

ELEV 650

	<u>RWY</u>	<u>GS/TCH/RPI</u>	<u>CAT</u>	<u>DH/ MDA-VIS</u>	<u>HAT/ HATh/ HAA</u>	<u>CEIL-VIS</u>
PAR ²	36 ³	3.0 ⁷ /59/1225	ABCDE	850-½	200	(200-½)
	18 ^{4,5}	3.0 ⁷ /61/1071	ABCDE	836-¾	200	(200-¾)
PAR W/O GS ²	18 ^{4,6}		AB	1040-1	404	(400-1)
			CDE	1040-1⅙	404	(400-1⅙)
	36 ^{7,8}		AB	1160-½	510	(600-½)
			CDE	1160-1	510	(600-1)
ASR ²	18 ⁹		AB	1100-1	464	(500-1)
			CDE	1100-1⅓	464	(500-1⅓)
	36 ¹⁰		AB	1220-½	570	(600-½)
			CDE	1220-1¼	570	(600-1¼)
CIR	18-36 ¹¹		A	1220-1	570	(600-1)
			B	1320-1	670	(700-1)
			C	1320-1¼	670	(700-1¼)
			D	1340-2¼	690	(700-2¼)
			E	1440-2¾	790	(800-2¾)

¹Opr 1300-0500Z++ Mon-Fri; clsd Sat, Sun and hol. Afid hr subject to chg by NOTAM. Base OPS/ATC not manned outside of publ hrs.

²No-NOTAM MP: PAR 1230-1530Z++ Tue, Thu; ASR 1230-1530Z++ Mon, Wed.

³When ALS inop, increase vis to ¾ mile.

⁴CAUTION: PAR TCH exceeds 60'.

⁵CAUTION: WCH for Height Group 1 (53 ft) is higher than the maximum 50 ft. WCH Group 1 includes general aviation, small commuters, corporate turbojets, T-38, C-12, C-20, C-21, T-1, fighter jets, UC-35, T-3, T-6 aircraft.

⁶Step down fix at 2 NM from RPI, 1280 min.

⁷When ALS inop, increase CAT AB vis to 1 mile, CAT CDE vis to 1½ miles.

⁸Step Down Fix at 2 NM from RPI, 1300 min.

⁹Step Down Fix at 2 NM from thld, 1320 min.

¹⁰When ALS inop, increase CAT AB vis to 1 mile, CAT CDE vis to 1½ miles.

¹¹Circling not authorized E of Rwy 18-36.

22 FEB 2024 to 21 MAR 2024

22 FEB 2024 to 21 MAR 2024

RADAR INSTRUMENT APPROACH MINIMUMS

RADAR INSTRUMENT APPROACH MINIMUMS

SHEPPARD AFB/WICHITA FALLS MUNI (KSPS), Wichita Falls, TX

Amdt 7 14JUL22 (22195) (USAF)

ELEV 1019

RADAR^{1 2} - (E) Ctc SHEPPARD APP CON 118.2 269.025 **▼ ▲** NA when Sheppard Approach Control closed.

	<u>RWY</u>	<u>GS/TCH/RPI</u>	<u>CAT</u>	<u>DH/ MDA-VIS</u>	<u>HAT/ HATH/ HAA</u>	<u>CEIL-VIS</u>
ASR ³	15C ^{4 5}		ABCDE	1420-¾	417	(500-¾)
	15R ^{4 5}		ABCDE	1420-¾	422	(500-¾)
	33L ⁴		ABCDE	1440-¾	440	(500-¾)
	33C ⁶		AB	1440-¾	451	(500-¾)
			CDE	1440-¾	451	(500-¾)
C CIR ⁷	ALL RWY		A	1440-1¼	421	(500-1¼)
			B	1480-1¼	461	(500-1¼)
			C	1480-1½	461	(500-1½)
			D	2020-3	1001	(1100-3)
			E	2080-3	1061	(1100-3)

¹Sheppard APP CON clsd 0200-1200Z++ Mon-Fri, 2300-1800Z++ Sun, clsd Sat and hol, ctc FORT WORTH CENTER 133.5 350.35.

²MP ASR 0600-1200Z++ Mon-Fri.

³ASR not avbl when Sheppard APP CON is clsd.

⁴When ALS inop, increase CAT ABCDE vis to 1¼ miles.

⁵Step Down Fix 2.75 NM from rwy thld.

⁶When ALS inop, increase CAT AB vis to 1¼ miles, CAT CDE vis to 1½ miles.

⁷Circling NA West of Rwy 15R-33L.

22 FEB 2024 to 21 MAR 2024

22 FEB 2024 to 21 MAR 2024

RADAR INSTRUMENT APPROACH MINIMUMS