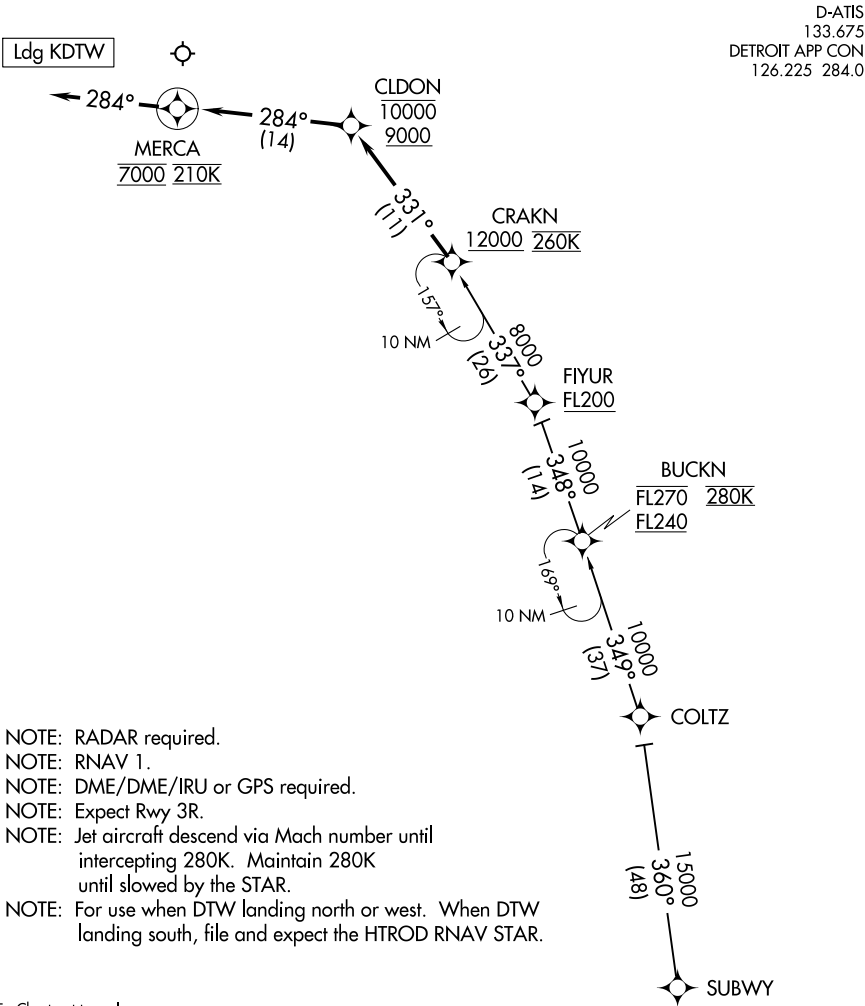


ARRIVAL ROUTE DESCRIPTION

From BONZZ on track 319° to cross KLYNK between 12000 and 15000, then on track 319° to cross TMBIT between 10000 and 11000 and at 250K, then on track 320° to cross FFORK at or above 9000.

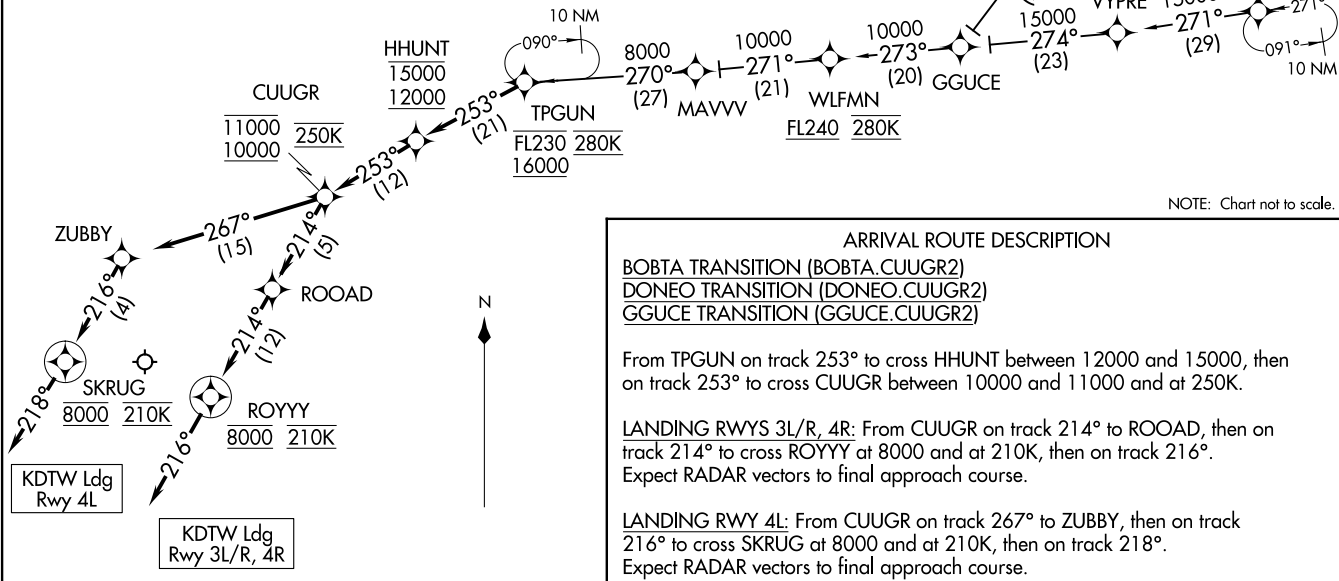
LANDING RWYS 22L, 21L/R: From FFORK on track 037° to cross TBRRD at 8000 and at 210K, then on track 036°. Expect RADAR vectors to final approach course.

LANDING RWY 22R: From FFORK on track 308° to TRPRS, then on track 035° to cross DZMND at 8000 and at 210K, then on track 033°. Expect RADAR vectors to final approach course.



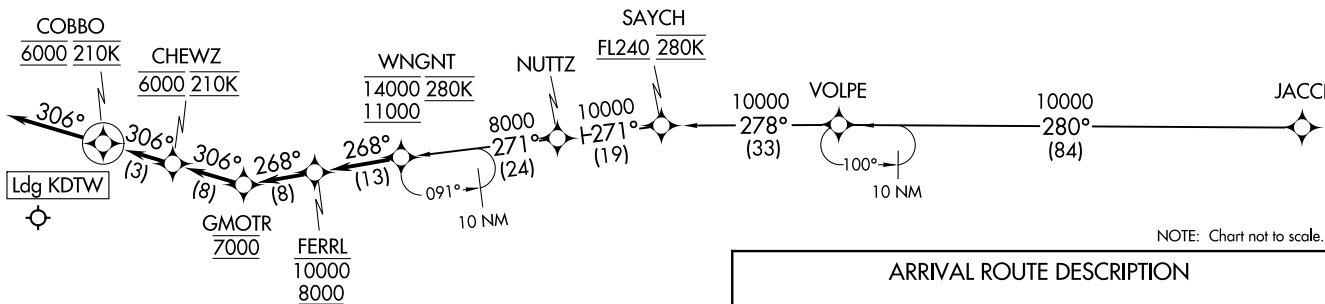
D-ATIS
133.675
DETROIT APP CON
126.225 284.0

- NOTE: RADAR required.
- NOTE: RNAV 1.
- NOTE: DME/DME/IRU or GPS required.
- NOTE: Use Rwy 3R Transition or as assigned by ATC.
Expect runway assignment from Detroit APP CON
no later than 10 NM from CUUGR.
- NOTE: Jet aircraft descend via Mach number until intercepting
280K. Maintain 280K until slowed by the STAR.
- NOTE: For use when DTW landing north. When DTW landing
south or west, file and expect the TPGUN RNAV STAR.
- NOTE: GGUCE TRANSITION: Except for flights originating in
Canada, do not file, to be assigned by ATC.



DETROIT METRO WAYNE COUNTY (DTW)
DETROIT, MICHIGAN

NOTE: RADAR required.
NOTE: RNAV 1.
NOTE: DME/DME/IRU or GPS required.
NOTE: Expect Rwy 21L.
NOTE: Jet aircraft descend via Mach number until intercepting 280K. Maintain 280K until slowed by the STAR.
NOTE: For use when DTW landing south or west. When DTW landing north, file and expect the WNGNT RNAV STAR.



JACCI TRANSITION (JACCI.FERRL2)

From WNGNT on track 268° to cross FERRL between 8000 and 10000, then on track 268° to cross GMOTR at 7000, then on track 306° to cross CHEWZ at 6000 and at 210K, then on track 306° to cross COBBO at 6000 and at 210K, then on track 306°. Expect RADAR vectors to final approach course.

LOST COMMUNICATIONS:

From COBBO, execute ILS Rwy 21L approach.

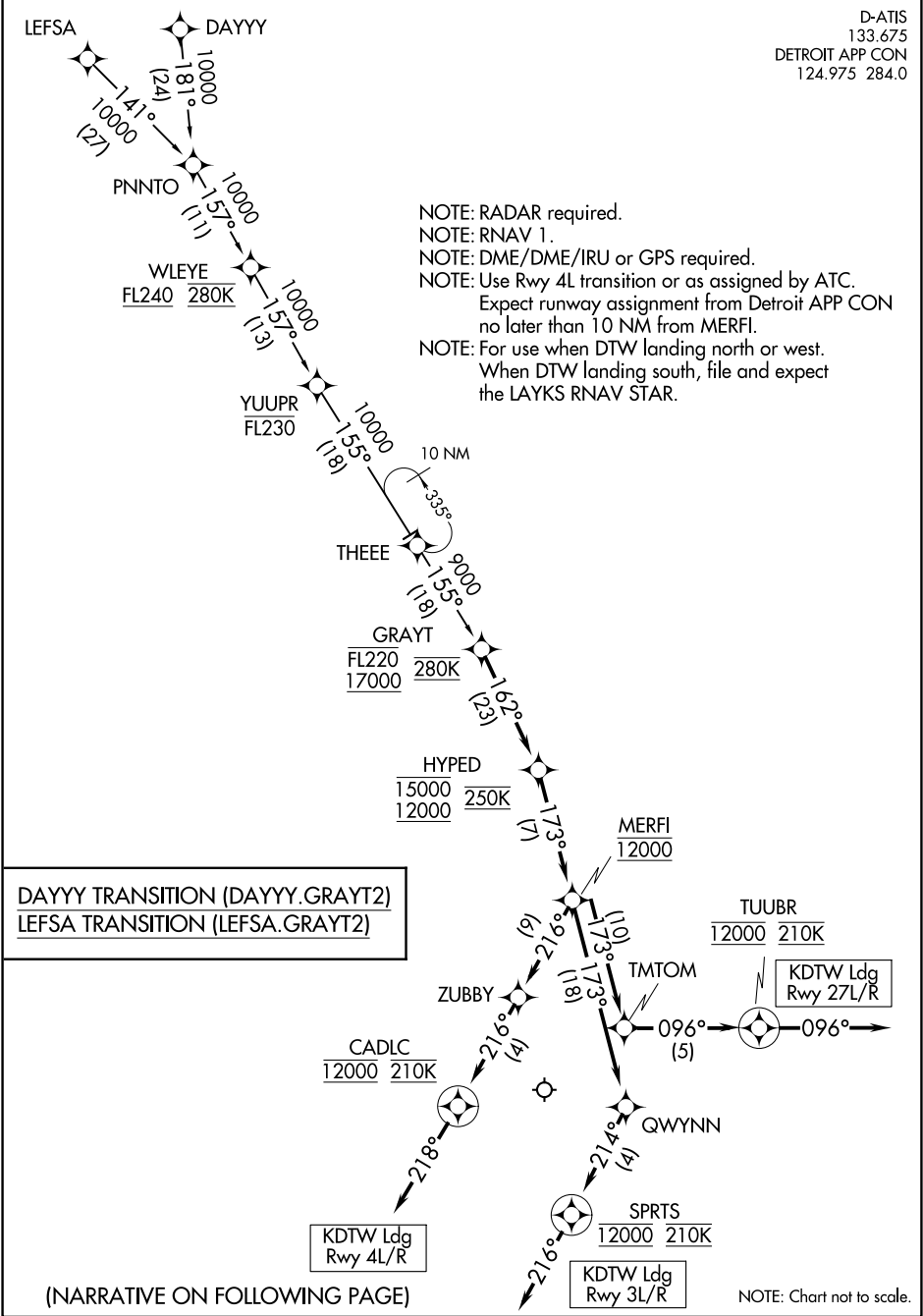
FERRL TWO ARRIVAL (RNAV)
 DETROIT, MICHIGAN
 (WNGNT.FERRL2) 100CT19
 DETROIT METRO WAYNE COUNTY (DTW)

(GRAYT.GRAYT2) 21112
GRAYT TWO ARRIVAL(RNAV)

AL-119 (FAA)

DETROIT METRO WAYNE COUNTY (DTW)
DETROIT, MICHIGAN

D-ATIS
133.675
DETROIT APP CON
124.975 284.0



EC-1, 22 FEB 2024 to 21 MAR 2024

EC-1, 22 FEB 2024 to 21 MAR 2024

GRAYT TWO ARRIVAL(RNAV)
(GRAYT.GRAYT2) 10OCT19

DETROIT, MICHIGAN
DETROIT METRO WAYNE COUNTY (DTW)

ARRIVAL ROUTE DESCRIPTION

From GRAYT on track 162° to cross HYPED between 12000 and 15000 and at 250K, then on track 173° to cross MERFI at 12000.

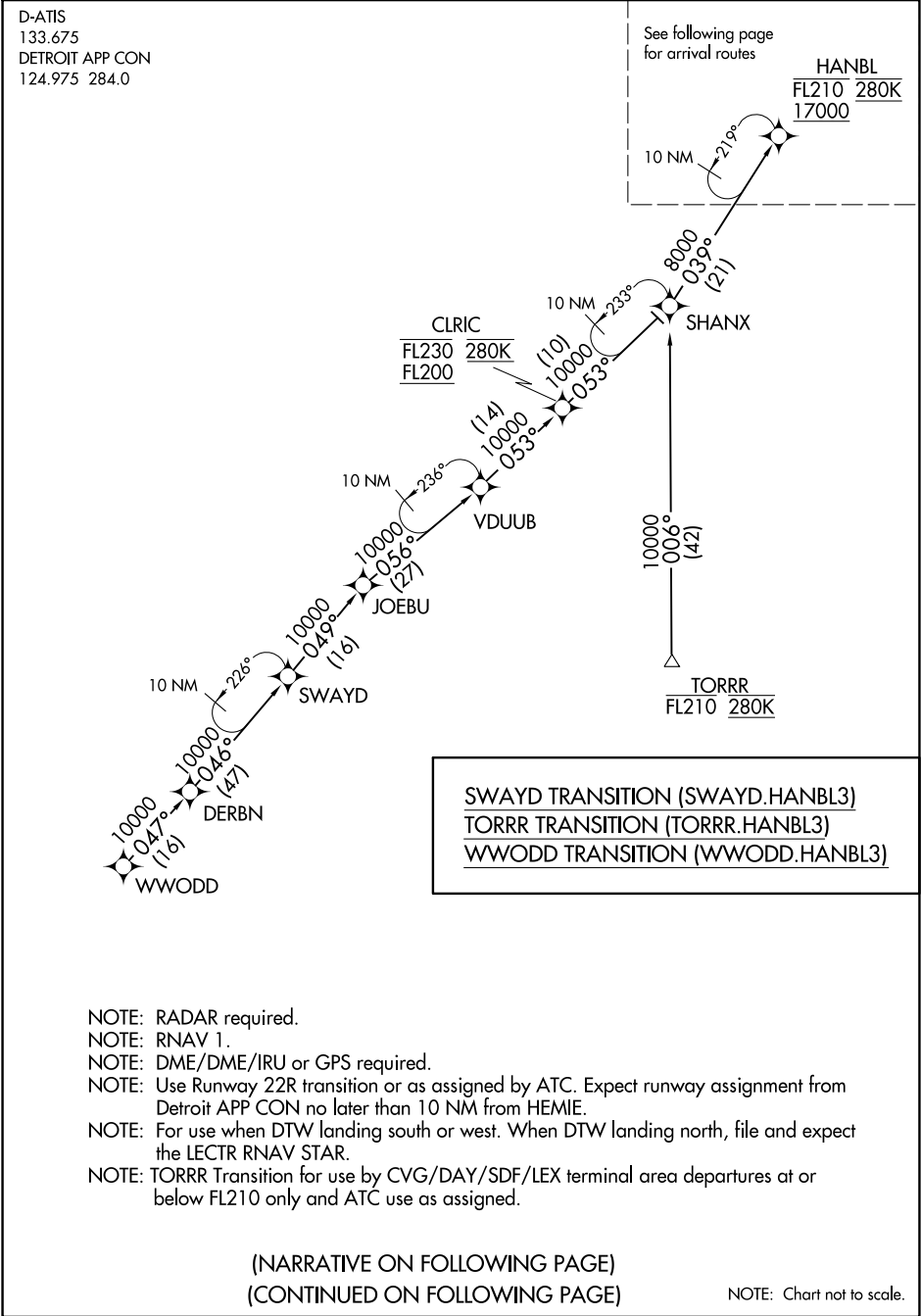
LANDING RWY 3L/R: From MERFI on track 173° to QWYNN, then on track 214° to cross SPRTS at 12000 and at 210K, then on track 216°. Expect RADAR vectors to final approach course.

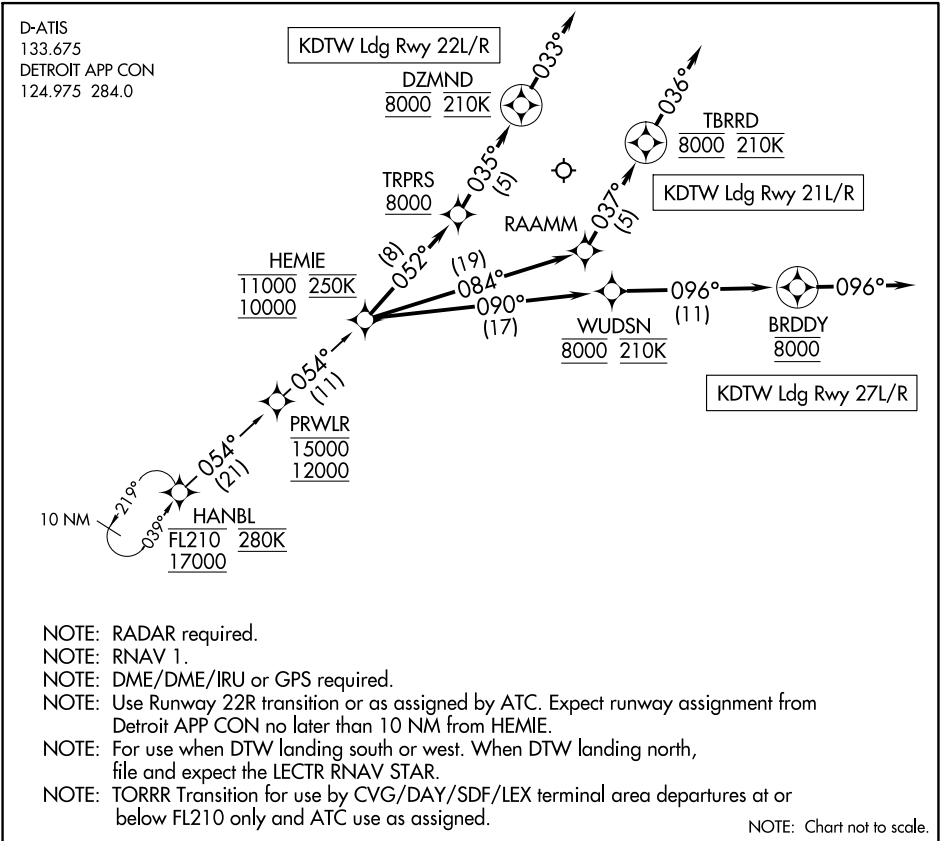
LANDING RWY 4L/R: From MERFI on track 216° to ZUBBY, then on track 216° to cross CADLC at 12000 and at 210K, then on track 218°. Expect RADAR vectors to final approach course.

LANDING RWY 27L/R: From MERFI on track 173° to TMTOM, then on track 096° to cross TUUBR at 12000 and at 210K, then on track 096°. Expect RADAR vectors to final approach course.

EC-1, 22 FEB 2024 to 21 MAR 2024

EC-1, 22 FEB 2024 to 21 MAR 2024

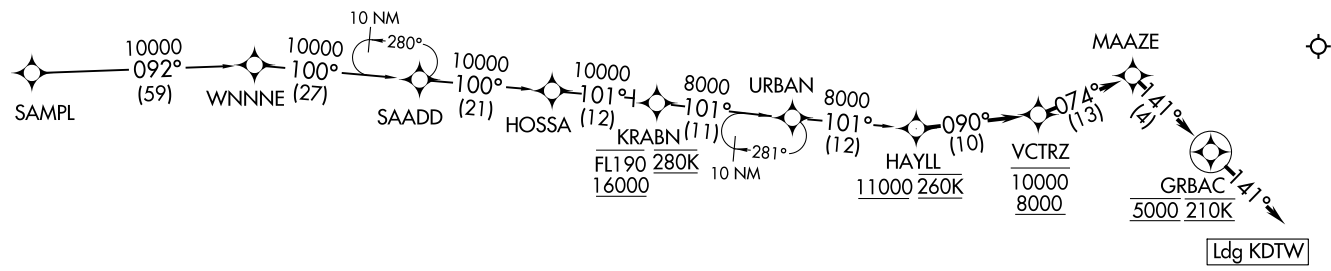




ARRIVAL ROUTE DESCRIPTION
From HANBL on track 054° to cross PRWLRL between 12000 and 15000, then on track 054° to cross HEMIE between 10000 and 11000 and at 250K.
<u>LANDING RUNWAY 21L/R:</u> From HEMIE on track 084° to RAAMM, then on track 037° to cross TBRRD at 8000 and at 210K, then on track 036°. Expect RADAR vectors to final approach course.
<u>LANDING RUNWAY 22L/R:</u> From HEMIE on track 052° to cross TRPRS at or above 8000, then on track 035° to cross DZMND at 8000 and at 210K, then on track 033°. Expect RADAR vectors to final approach course.
<u>LANDING RUNWAY 27L/R:</u> From HEMIE on track 090° to cross WUDSN at 8000 and at 210K, then on track 096° to cross BRDDY at 8000, then on track 096°. Expect RADAR vectors to final approach course.

NOTE: RADAR required.
NOTE: RNAV 1.
NOTE: DME/DME/IRU or GPS required.
NOTE: Expect Rwy 4L.
NOTE: For use when DTW landing north.
When DTW landing south or west, file and expect the VCTRZ RNAV STAR.
NOTE: For use by flights departing MDW, SBN, AZO, MCI, LAS, LAX, PHX, SAN, SNA airports only, or as assigned by ATC.

D-ATIS
133.675
DETROIT APP CON
124.975 284.0



ARRIVAL ROUTE DESCRIPTION

HOSSA TRANSITION (HOSSA.HAYLL3)
SAMPL TRANSITION (SAMPL.HAYLL3)

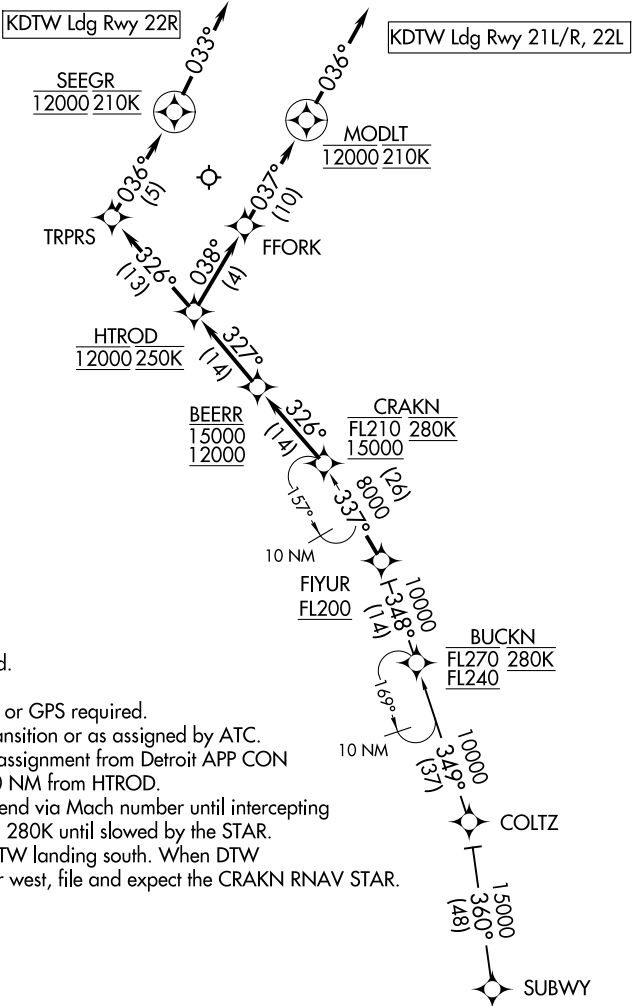
From HAYLL on track 090° to cross VCTRZ between 8000 and 10000, then on track 074° to MAAZE, then on track 141° to cross GRBAC at 5000 and at 210K, then on track 141°. Expect RADAR vectors to final approach course.

LOST COMMUNICATIONS

From GRBAC, execute RNAV (GPS) Y RWY 4L approach or ILS Y RWY 4L approach.

NOTE: Chart not to scale.

D-ATIS
133.675
DETROIT APP CON
126.225 284.0



- NOTE: RADAR required.
- NOTE: RNAV 1.
- NOTE: DME/DME/IRU or GPS required.
- NOTE: Use Rwy 21L transition or as assigned by ATC. Expect runway assignment from Detroit APP CON no later than 10 NM from HTROD.
- NOTE: Jet aircraft descend via Mach number until intercepting 280K. Maintain 280K until slowed by the STAR.
- NOTE: For use when DTW landing south. When DTW landing north or west, file and expect the CRAKN RNAV STAR.

NOTE: Chart not to scale.

ARRIVAL ROUTE DESCRIPTION

SUBWY TRANSITION (SUBWY.HTROD2)

From CRAKN on track 326° to cross BEERR between 12000 and 15000, then on track 327° to cross HTROD at 12000 and at 250K.

LANDING RUNWAY 22L, 21L/R: From HTROD on track 038° to FFORK, then on track 037° to cross MODLT at 12000 and at 210K, then on track 036°.

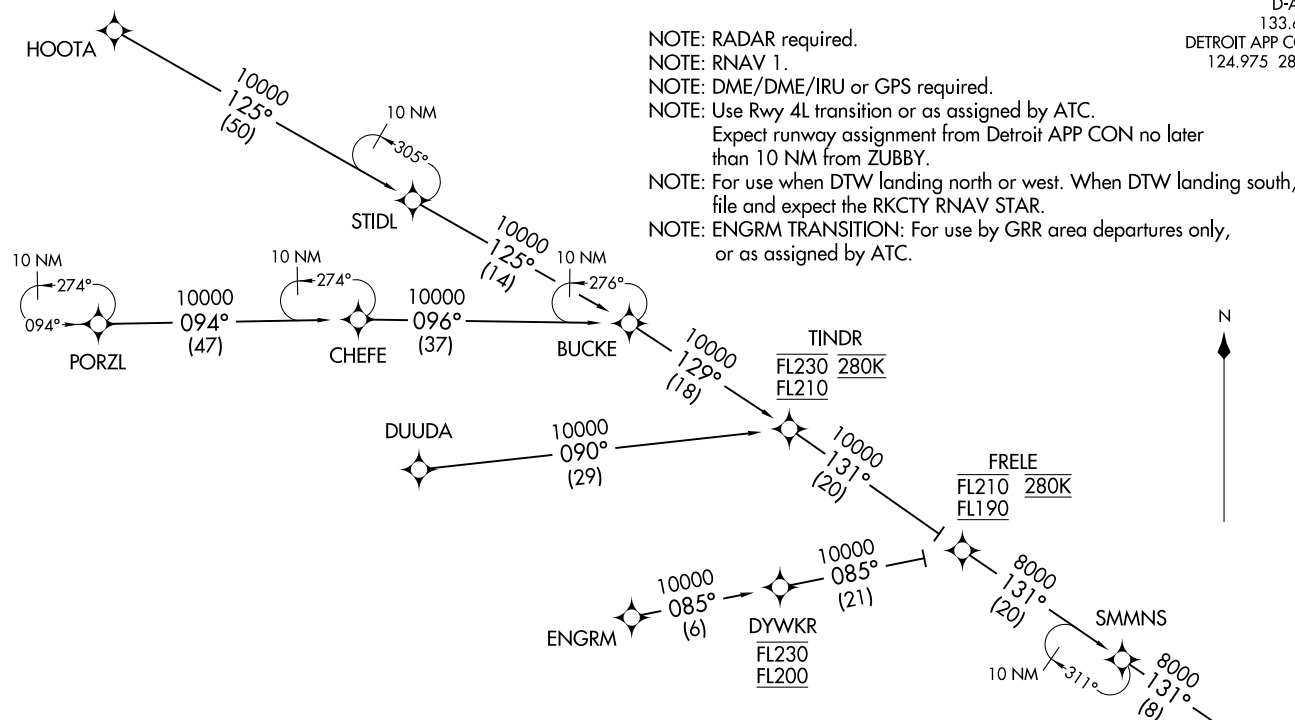
Expect RADAR vectors to final approach course.

LANDING RUNWAY 22R: From HTROD on track 326° to TRPRS, then on track 036° to cross SEEGR at 12000 and at 210K, then on track 033°.

Expect RADAR vectors to final approach course.

KKISS TWO ARRIVAL (RNAV) Transition Routes
(RKCTY, KKISS2) 100CT19

DETROIT, MICHIGAN
DETROIT METRO WAYNE COUNTY (DTW)



DUUDA TRANSITION (DUUDA.KKISS2)
ENGRM TRANSITION (ENGRM.KKISS2)
HOOTA TRANSITION (HOOTA.KKISS2)
PORZL TRANSITION (PORZL.KKISS2)

(NARRATIVE ON FOLLOWING PAGE)
(CONTINUED ON FOLLOWING PAGE)

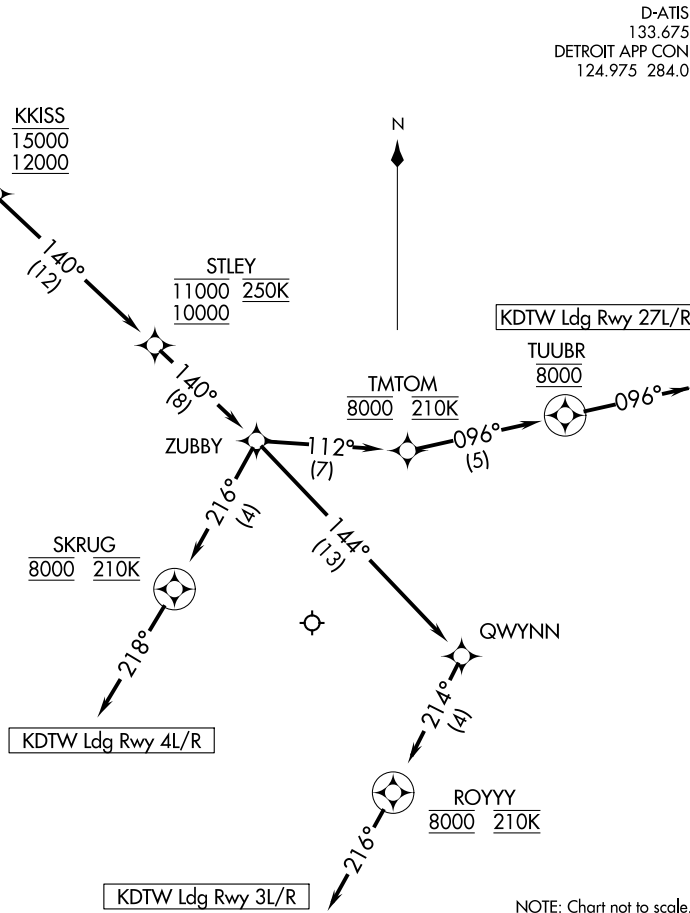
NOTE: Chart not to scale.

See following
page for
arrival route

D-ATIS
133.675
DETROIT APP CON
124.975 284.0

(RKCTY, KKISS2) 21112
KKISS TWO ARRIVAL (RNAV) Transition Routes
DETROIT METRO WAYNE COUNTY (DTW)
AL-119 (FAA) DETROIT, MICHIGAN

D-ATIS
133.675
DETROIT APP CON
124.975 284.0



- NOTE: RADAR required.
NOTE: RNAV 1.
NOTE: DME/DME/IRU or GPS required.
NOTE: Use Rwy 4L transition or as assigned by ATC.
Expect runway assignment from Detroit APP CON
no later than 10 NM from ZUBBY.
NOTE: For use when DTW landing north or west. When DTW
landing south, file and expect the RKCTY RNAV STAR.
NOTE: ENGRM TRANSITION: For use by GRR area departures only,
or as assigned by ATC.

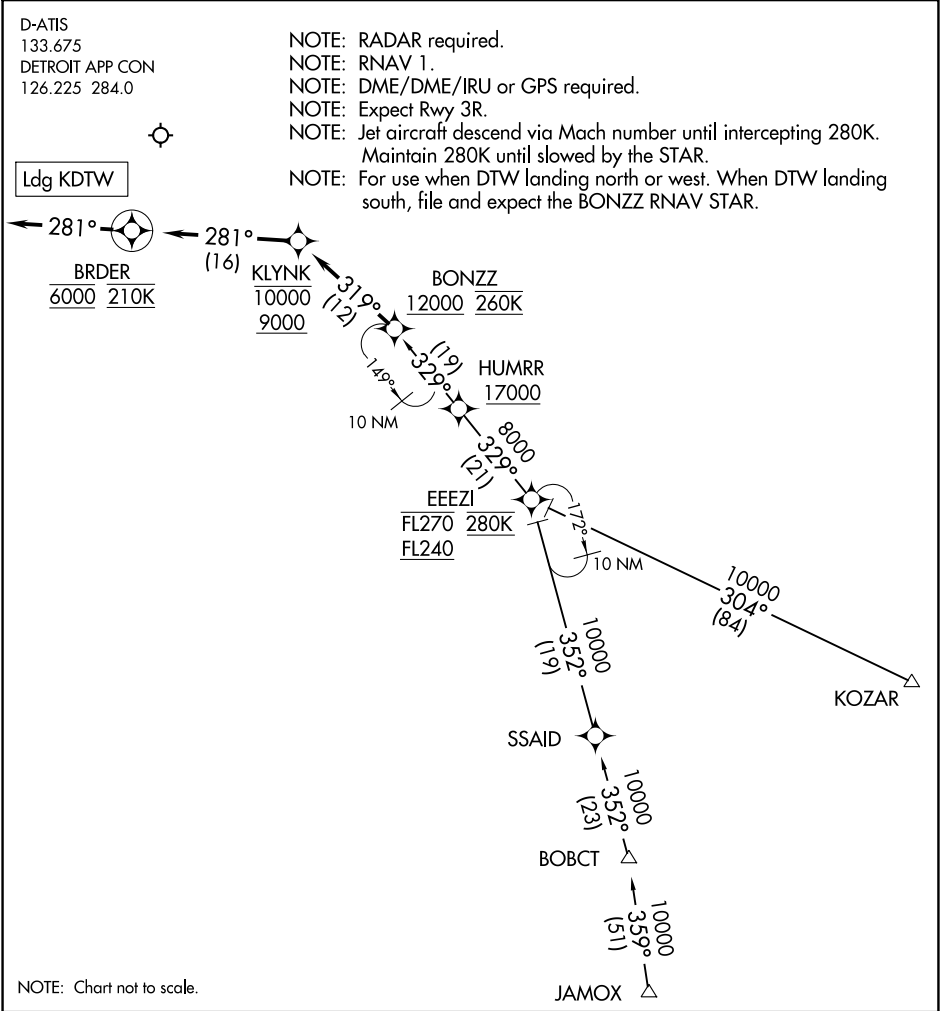
ARRIVAL ROUTE DESCRIPTION

From RKCTY on track 141° to cross KKISS between 12000 and 15000, then on track 140° to cross STLEY between 10000 and 11000 and at 250K, then on track 140° to ZUBBY.

LANDING RWY 3L/R: From ZUBBY on track 144° to QWYNN, then on track 214° to cross ROYYY at 8000 and at 210K, then on track 216°. Expect RADAR vectors to final approach course.

LANDING RWY 4L/R: From ZUBBY on track 216° to cross SKRUG at 8000 and at 210K, then on track 218°. Expect RADAR vectors to final approach course.

LANDING RWY 27L/R: From ZUBBY on track 112° to cross TMTOM at 8000 and at 210K, then on track 096° to cross TUUBR at 8000, then on track 096°. Expect RADAR vectors to final approach course.



ARRIVAL ROUTE DESCRIPTION

JAMOX TRANSITION (JAMOX.KLYNK3)

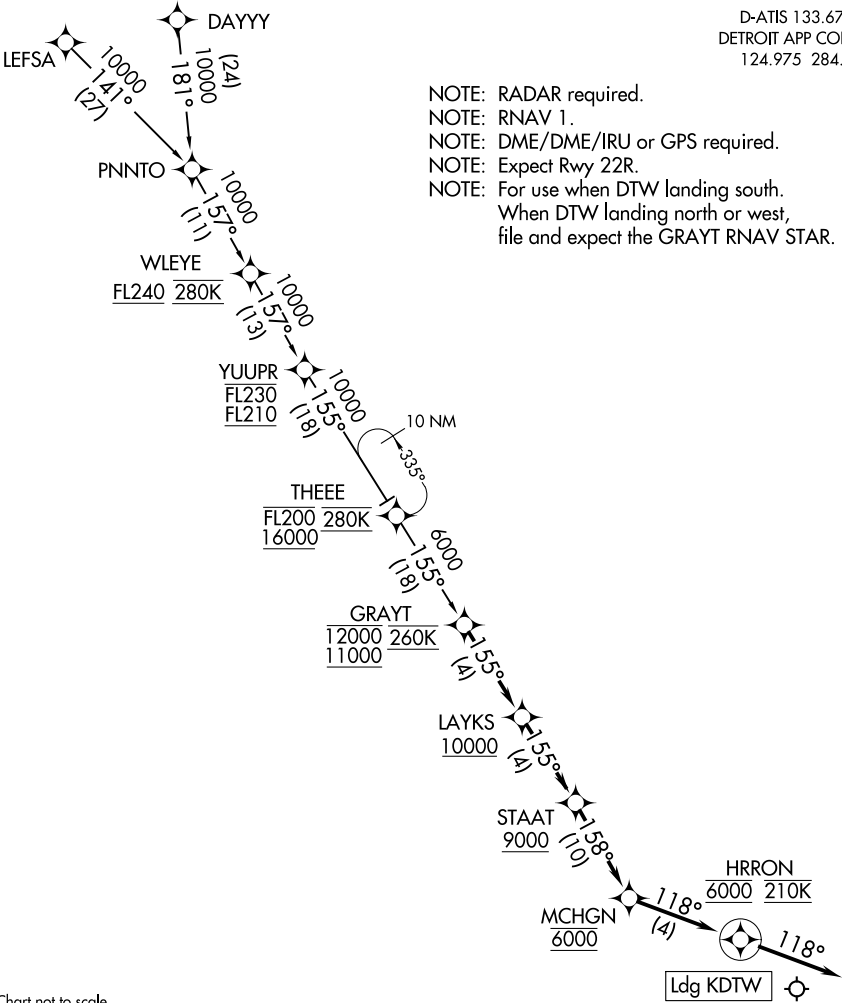
KOZAR TRANSITION (KOZAR.KLYNK3)

From BONZZ on track 319° to cross KLYNK between 9000 and 10000, then on track 281° to cross BRDER at 6000 and at 210K, then on track 281°. Expect RADAR vectors to final approach course.

LOST COMMUNICATIONS

From BRDER, execute ILS Rwy 3R approach.

D-ATIS 133.675
DETROIT APP CON
124.975 284.0



NOTE: Chart not to scale.

ARRIVAL ROUTE DESCRIPTION

DAYYY TRANSITION (DAYYY.LAYKS2)
LEFSA TRANSITION (LEFSA.LAYKS2)

From GRAYT on track 155° to cross LAYKS at or above 10000, then on track 155° to cross STAAT at or above 9000, then on track 158° to MCHGN at 6000, then on track 118° to cross HRRON at 6000 and at 210K, then on track 118°. Expect RADAR vectors to final approach course.

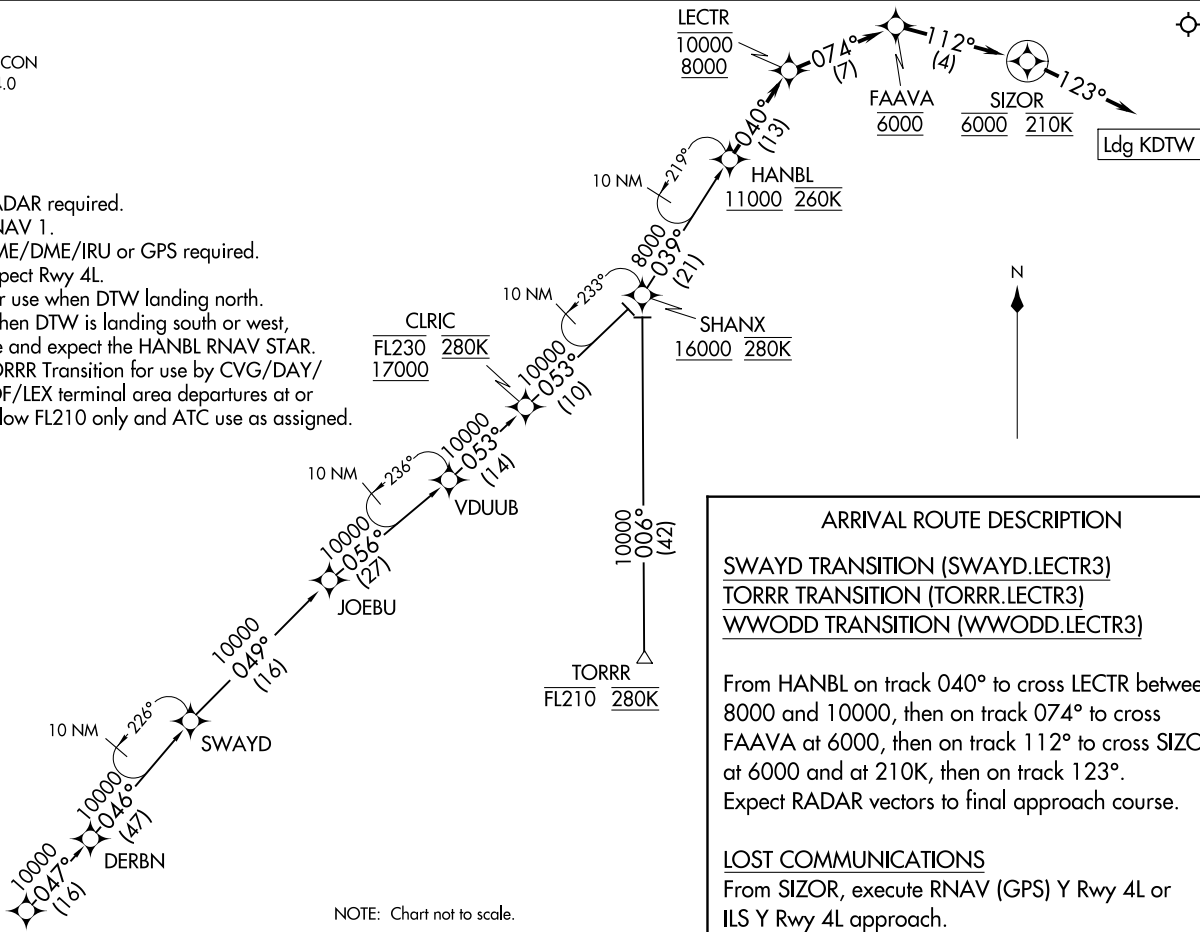
LOST COMMUNICATIONS: From HRRON, execute RNAV (GPS) Y RWY 22R or ILS Y RWY 22R approach.

DETROIT, MICHIGAN
DETROIT METRO WAYNE COUNTY (DTW)

NOTE: RADAR required.
NOTE: RNAV 1.
NOTE: DME/DME/IRU or GPS required.
NOTE: Expect Rwy 4L.
NOTE: For use when DTW landing north.
When DTW is landing south or west,
file and expect the HANBL RNAV STAR.
NOTE: TORRR Transition for use by CVG/DAY/
SDF/LEX terminal area departures at or
below FL210 only and ATC use as assigned.

NOTE: Chart not to scale.

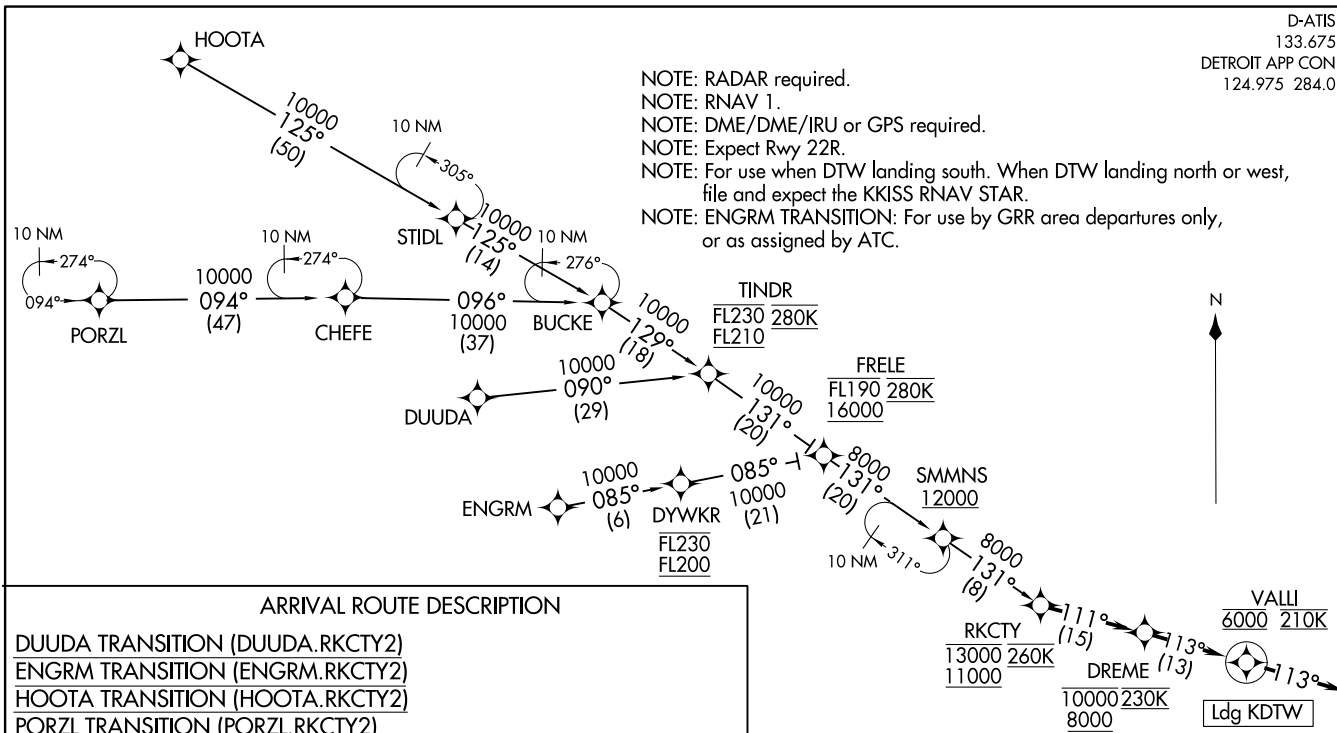
EC-1, 22 FEB 2024 to 21 MAR 2024



DETROIT METRO WAYNE COUNTY (DTW)
DETROIT, MICHIGAN

AL-119 (FAA)

EC-1, 22 FEB 2024 to 21 MAR 2024



TPGUN TWO ARRIVAL (RNAV)

DETROIT, MICHIGAN
DETROIT METRO WAYNE COUNTY (DTW)

NOTE: RADAR required.

NOTE: RNAV 1.

NOTE: DME/DME/IRU or GPS required.

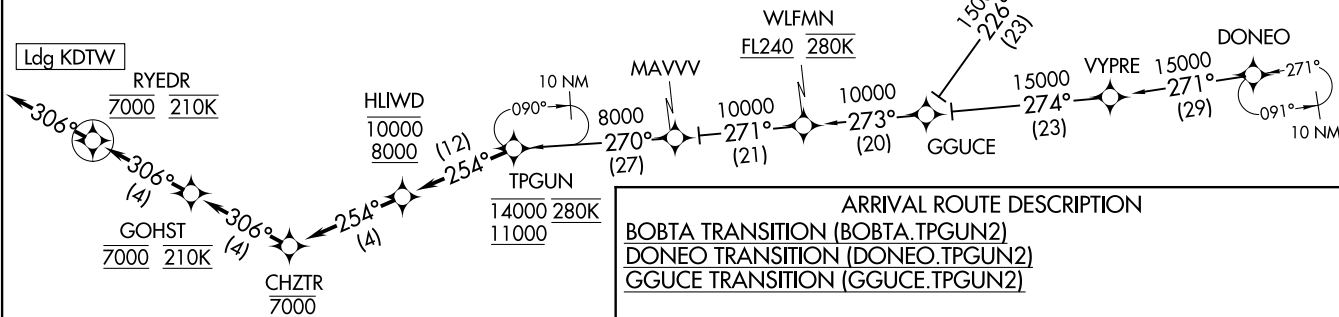
NOTE: Expect Rwy 21L.

NOTE: Jet aircraft descend via Mach number until intercepting 280K. Maintain 280K until slowed by the STAR.

NOTE: For use when DTW landing south or west. When DTW landing north, file and expect the CUUGR RNAV STAR.

NOTE: GUGUce TRANSITION: Except for flights originating in Canada, do not file, to be assigned by ATC.

NOTE: Chart not to scale.



ARRIVAL ROUTE DESCRIPTION

BOBTA TRANSITION (BOBTA.TPGUN2)
 DONEO TRANSITION (DONEO.TPGUN2)
 GGUCE TRANSITION (GGUCE.TPGUN2)

From TPGUN on track 254° to cross HLIWD between 8000 and 10000, then on track 254° to CHZTR at 7000, then on track 306° to cross GOHST at 7000 and at 210K, then on track 306° to cross RYEDR at 7000 and at 210K, then on track 306°. Expect RADAR vectors to final approach course.

LOST COMMUNICATIONS:

From RYEDR, execute ILS Rwy 21L approach.

D-ATIS
133.675
DETROIT APP CON
126.225 284.0

BOBTA

TPGUN TWO ARRI (TPGUN.TPGUN2) 21112

AL-119 (FAA)

DETROIT METRO WAYNE COUNTY (DTW)
DETROIT, MICHIGAN

(HAYLL.VCTRZ2) 21112
 VCTRZ TWO ARRIVAL (RNAV) Transition Routes
 (HAYLL.VCTRZ2) 100CT19
 DETROIT, MICHIGAN
 DETROIT METRO WAYNE COUNTY (DTW)

D-ATIS
 133.675
 DETROIT APP CON
 124.975 284.0



NOTE: RADAR required.

NOTE: RNAV 1.

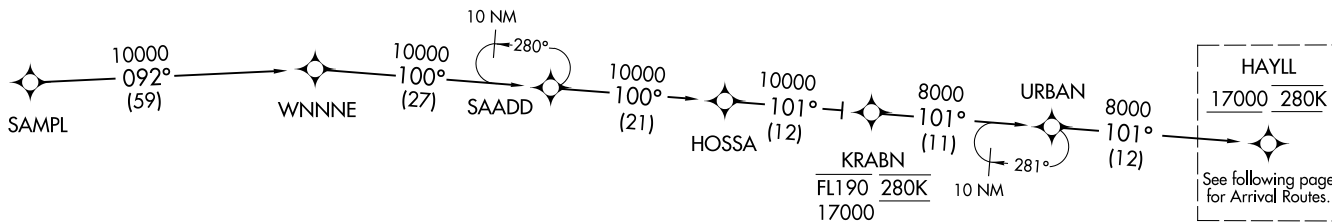
NOTE: DME/DME/IRU or GPS required.

NOTE: Use Runway 22R transition or as assigned by ATC.

Expect runway assignment from Detroit APP CON
 no later than 10 NM from UUOFM.

NOTE: For use when DTW landing south or west. When DTW landing north,
 file and expect the HAYLL RNAV STAR.

NOTE: For use by flights departing KMDW, KSBM, KAZO, KMCI, KLAS, KLAX,
 KPHX, KSAN, AND KSNA area airports only, or as assigned by ATC.

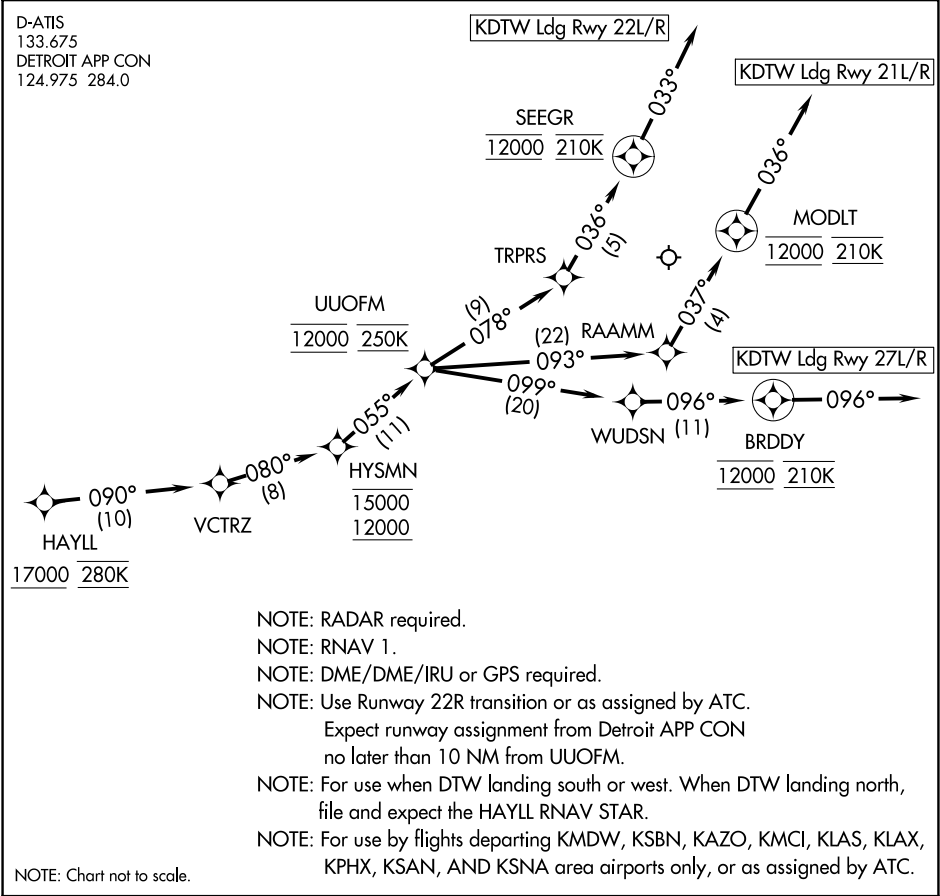


HOSSA TRANSITION (HOSSA.VCTRZ2)
 SAMPL TRANSITION (SAMPL.VCTRZ2)

(CONTINUED ON FOLLOWING PAGE)

NOTE: Chart not to scale.

(HAYLL.VCTRZ2) 21112
 VCTRZ TWO ARRIVAL (RNAV) Transition Routes
 AL-119 (FAA)
 DETROIT METRO WAYNE COUNTY (DTW)
 DETROIT, MICHIGAN



ARRIVAL ROUTE DESCRIPTION

From HAYLL on track 090° to VCTRZ, then on track 080° to cross HYSMN between 12000 and 15000, then on track 055° to cross UUOFM at 12000 and at 250K.

LANDING RUNWAY 21L/R: From UUOFM on track 093° to RAAMM, then on track 037° to cross MODLT at 12000 and at 210K, then on track 036°. Expect RADAR vectors to final approach course.

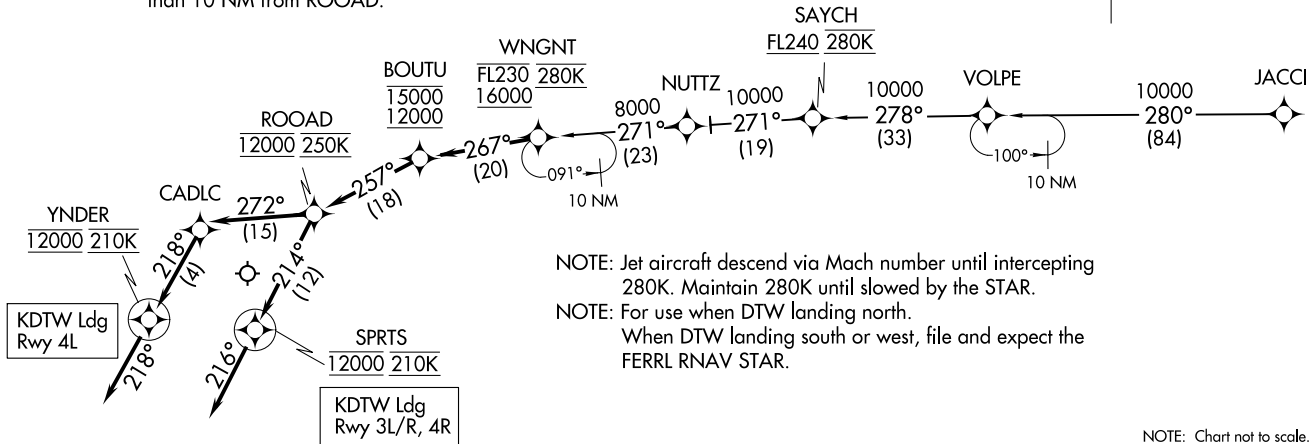
LANDING RUNWAY 22L/R: From UUOFM on track 078° to TRPRS, then on track 036° to cross SEEGR at 12000 and at 210K, then on track 033°. Expect RADAR vectors to final approach course.

LANDING RUNWAY 27L/R: From UUOFM on track 099° to WUDSN, then on track 096° to cross BRDDY at 12000 and at 210K, then on track 096°. Expect RADAR vectors to final approach course.

D-ATIS 133.675
DETROIT APP CON
126.225 284.0



NOTE: RADAR required.
NOTE: RNAV 1.
NOTE: DME/DME/IRU or GPS required.
NOTE: Use Rwy 3R transition or as assigned by ATC.
Expect runway assignment from Detroit APP CON no later than 10 NM from ROOAD.



ARRIVAL ROUTE DESCRIPTION

JACCI TRANSITION (JACCI.WNGNT2)

From WNGNT on track 267° to cross BOUTU between 12000 and 15000, then on track 257° to cross ROOAD at 12000 and at 250K. **LANDING RUNWAYS 3L/R, 4R:** From ROOAD on track 214° to cross SPRTS at 12000 and at 210K, then on track 216°. Expect RADAR vectors to final approach course. **LANDING RUNWAY 4L:** From ROOAD on track 272° to CADLC, then on track 218° to cross YNDER at 12000 and at 210K, then on track 218°. Expect RADAR vectors to final approach course.