

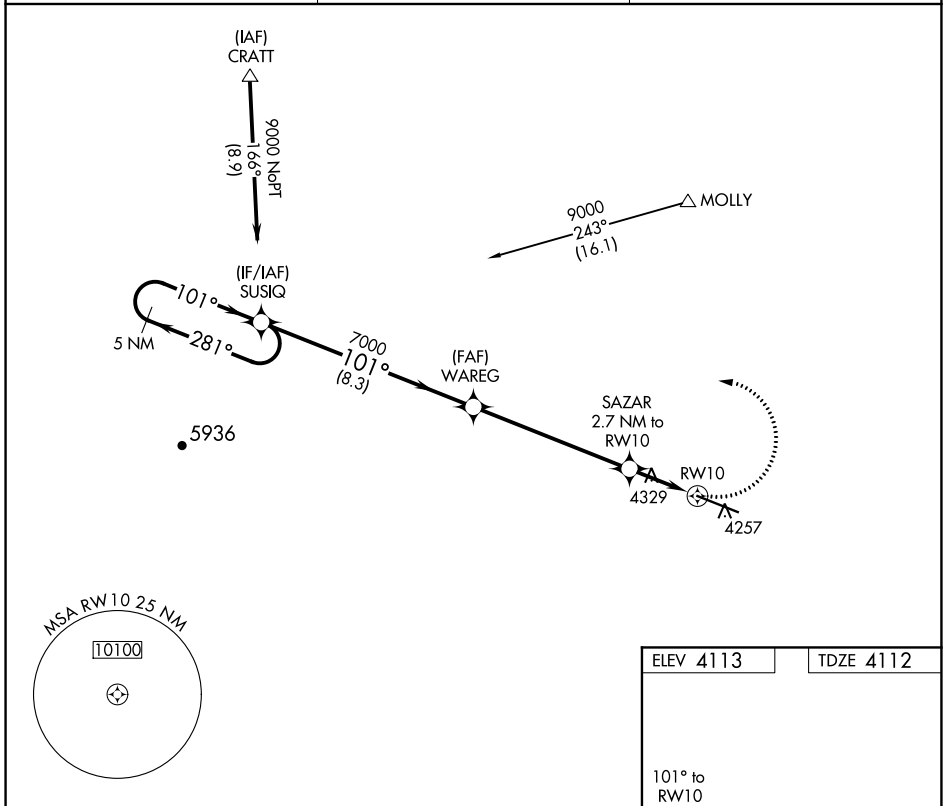
APP CRS 101°	Rwy Idg 9550
	TDZE 4112
	Apt Elev 4113

RNAV (GPS) RWY 10

DONA ANA COUNTY INTL JETPORT (D.A)

<p>NA DME/DME RNP-0.3 NA. When local altimeter setting not received, use El Paso Intl altimeter setting.</p>	<p>MISSED APPROACH: Climbing left turn to 9000 direct SUSIQ and hold.</p>
---	---

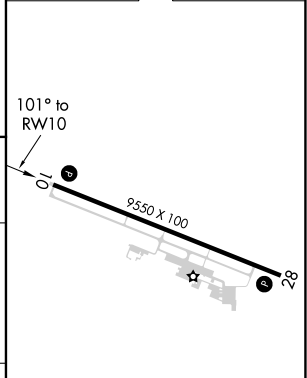
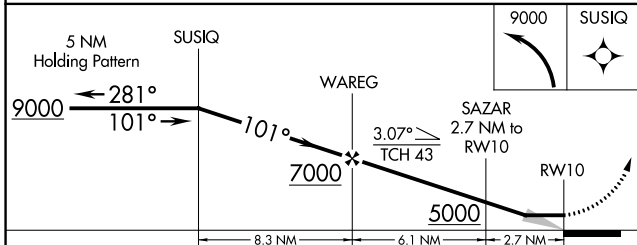
<p>AWOS-3PT 124.175</p>	<p>EL PASO APP CON 119.15</p>	<p>AUNICOM 122.725 (CTAF) 0</p>
------------------------------------	--	--



SW-1, 28 JAN 2021 to 25 FEB 2021

SW-1, 28 JAN 2021 to 25 FEB 2021

ELEV 4113	TDZE 4112
-----------	-----------



CATEGORY	A	B	C	D
LNNAV MDA	4700-1	588 (600-1)	4700-1¾	588 (600-1¾)
C CIRCLING	4760-1	647 (700-1)	4760-1¾	4760-2
			647 (700-¾)	647 (700-2)

MIRL Rwy 10-28 0
REIL Rwy 10 and 28 0