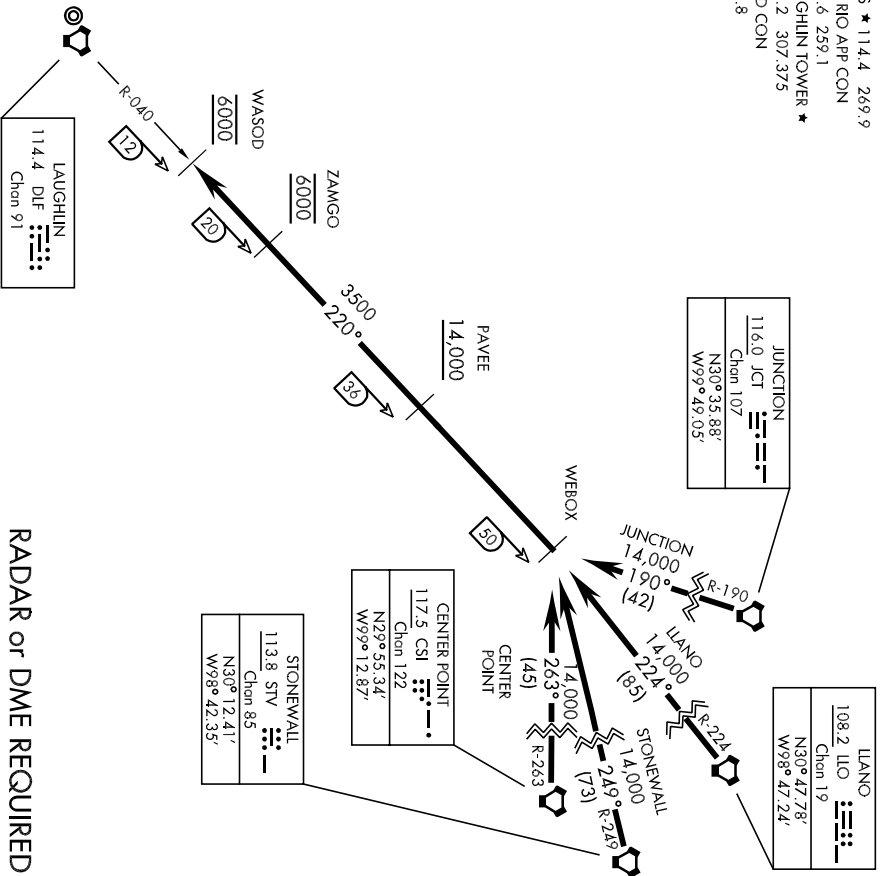


**(WEBOX • WEBOX4)  
WEBOX FOUR ARRIVAL**

ST-111 [USAF]

LAUGHLIN AFB  
DEL RIO, TEXAS

ATIS ★ 114.4 269.9  
DEL RIO APP CON 119.6 259.1  
LAUGHLIN TOWER ★ 125.2 307.375  
GND CON 275.8



**RADAR or DME REQUIRED**

**ARRIVAL ROUTE DESCRIPTION**

- JUNCTION Transition (JCT.WEBOX4): From over JCT VORTAC via JCT R-190 to WEBOX. Thence...
- LLANO Transition (ILO.WEBOX4): From over ILO VORTAC via ILO R-224 to WEBOX. Thence...
- STONEWALL Transition (STV.WEBOX4): From over STV VORTAC via STV R-249 to WEBOX. Thence...
- CENTER POINT Transition (CSI.WEBOX4): From over CSI VORTAC via CSI R-263 to WEBOX. Thence...

...From over DLF R-040/50 (WEBOX) via DLF R-040 to DLF R-040/12 (WASOD).  
Expect vectors for an instrument approach to runway in use.

**WEBOX FOUR ARRIVAL (WEBOX • WEBOX4)**

09183

DEL RIO, TEXAS  
LAUGHLIN AFB