

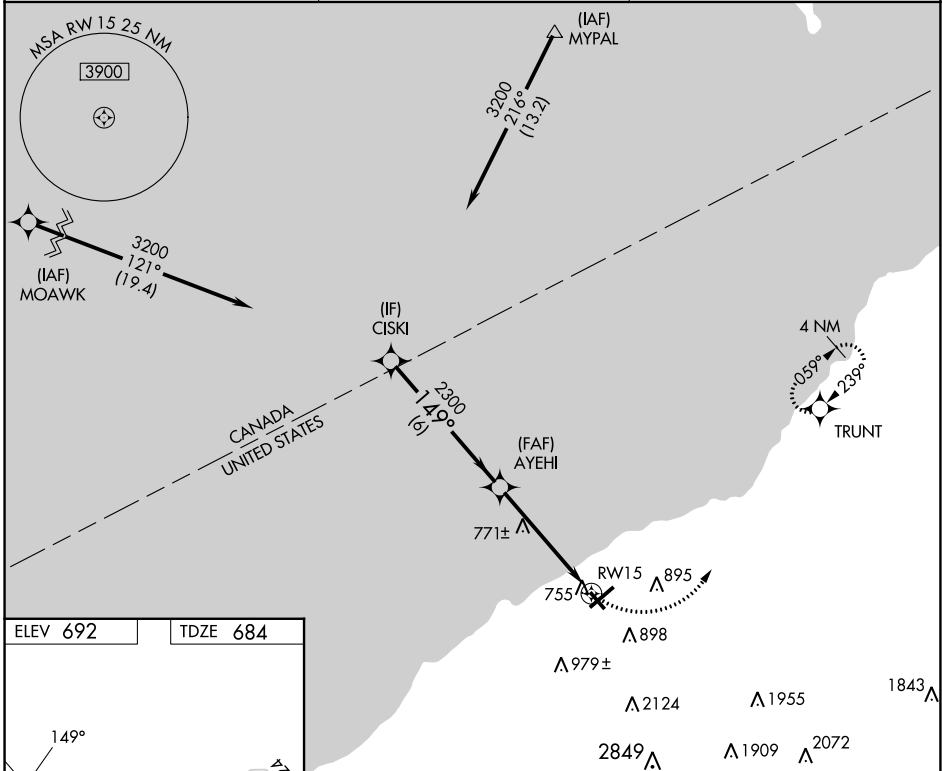
APP CRS	Rwy Idg	4000
149°	TDZE	684
	Apt Elev	692

RNAV (GPS) RWY 15

CHAUTAUGUA COUNTY/DUNKIRK (DKK)

RNP APCH.	<p>⚠ Circling to Rwy 6, 24, 33 NA at night.</p> <p>⚠ Circling Cat D NA southeast of Rwy 6 and southwest of Rwy 33.</p> <p>⚠ Rwy 15 helicopter visibility reduction below $\frac{3}{4}$ SM NA.</p>	<p>MISSED APPROACH: Climbing left turn to 3200 direct TRUNT and hold, continue climb-in-hold to 3200.</p>
-----------	--	---

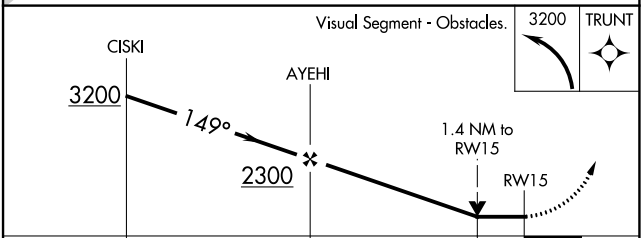
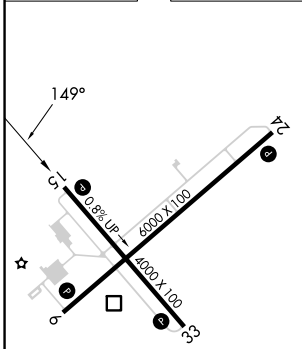
ASOS 119.275	BUFFALO APP CON 126.5 317.6	UNICOM 123.075 (CTAF) 0
------------------------	---------------------------------------	-----------------------------------



NE-2, 22 FEB 2024 to 21 MAR 2024

NE-2, 22 FEB 2024 to 21 MAR 2024

ELEV 692	TDZE 684
----------	----------



CATEGORY	A	B	C	D
LNAV MDA	1140-1	456 (500-1)	1140-1 $\frac{3}{8}$	456 (500-1 $\frac{3}{8}$)
C CIRCLING	1200-1 508 (600-1)	1320-1 628 (700-1)	1640-2 $\frac{3}{4}$ 948 (1000-2 $\frac{3}{4}$)	2140-3 1448 (1500-3)

MIRL Rwy 15-33 **0**
 REIL Rwy 6 and 24 **0**
 HIRL Rwy 6-24 **0**

APP CRS	Rwy Idg	4000
329°	TDZE	692
	Apt Elev	692

RNAV (GPS) RWY 33

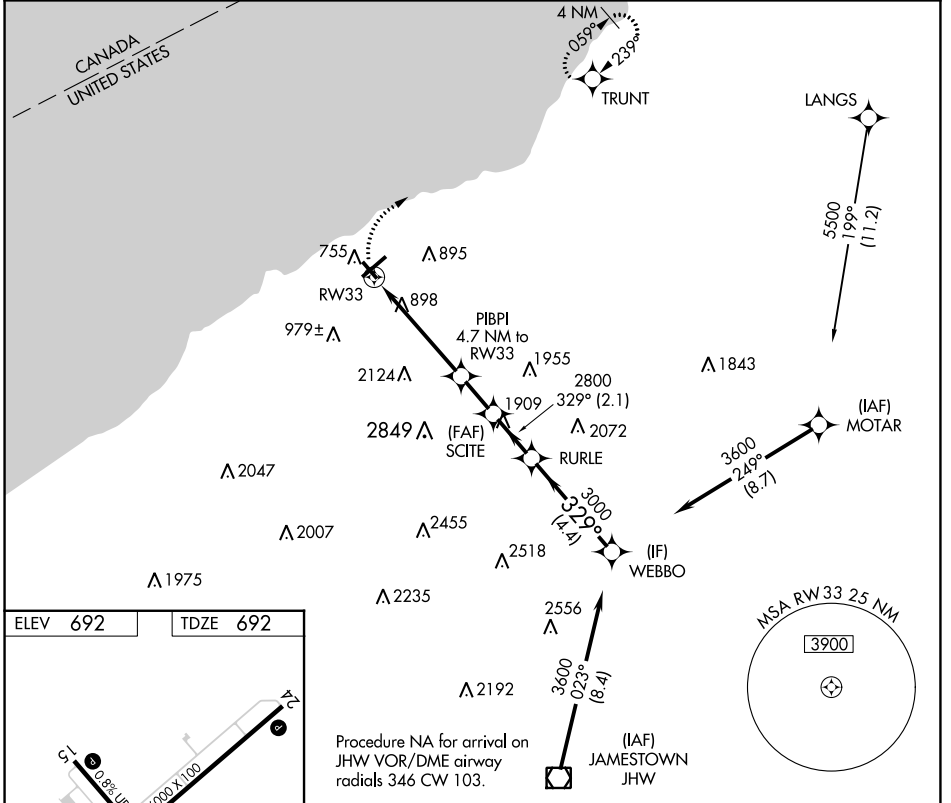
CHAUTAUQUA COUNTY/DUNKIRK (DKK)

RNP APCH.

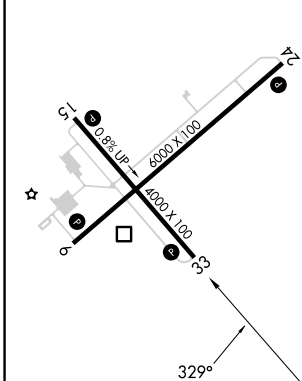
⚠ Circling Cat D NA southeast of Rwy 6 and southwest of Rwy 33.
 Rwy 33 helicopter visibility reduction below 1 SM NA.
❄ -22°C
 Straight-In Rwy 33 NA at night, Circling Rwy 6, 24, 33 NA at night.

MISSED APPROACH: Climbing right turn to 3200 direct TRUNT and hold.

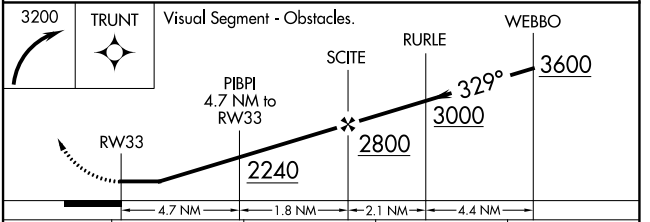
ASOS 119.275	BUFFALO APP CON 126.5 317.6	UNICOM 123.075 (CTAF) 0
------------------------	---------------------------------------	-----------------------------------



ELEV 692	TDZE 692
----------	----------



MIRL Rwy 15-33 **Ⓛ**
 REIL Rws 6 and 24 **Ⓛ**
 HIRL Rwy 6-24 **Ⓛ**



CATEGORY	A	B	C	D
LNAV MDA	1860-1¼ 1168 (1200-1¼)	1860-1½ 1168 (1200-1½)	1860-3	1168 (1200-3)
C CIRCLING	1860-1¼ 1168 (1200-1¼)	1860-1½ 1168 (1200-1½)	1860-3	2140-3 1448 (1500-3)

NE-2, 22 FEB 2024 to 21 MAR 2024

NE-2, 22 FEB 2024 to 21 MAR 2024

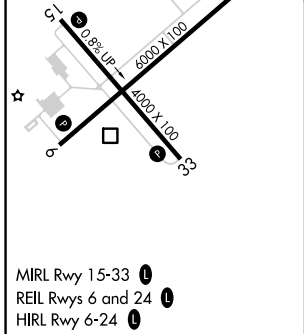
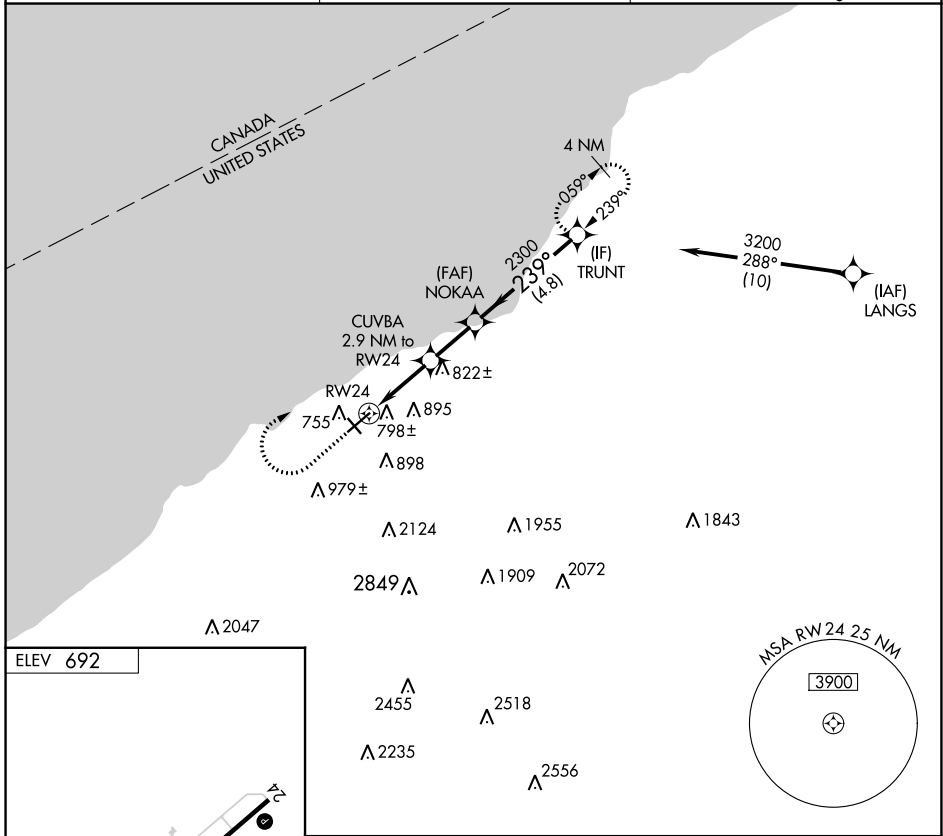
APP CRS	Rwy Idg	N/A
239°	TDZE	N/A
	Apt Elev	692

RNAV (GPS)-A

CHAUTAUGUA COUNTY/DUNKIRK (DKK)

RNP APCH - GPS.	MISSED APPROACH: Climb to 1900 then climbing right turn to 3200 direct TRUNT and hold.
Circling Cat D NA southeast of Rwy 6 and southwest of Rwy 33. Circling Rwy 6, 24, 33 NA at night. Rwy 6, 24, 33 helicopter visibility reduction below 1 SM NA.	

ASOS 119.275	BUFFALO APP CON 126.5 317.6	UNICOM 123.075 (CTAF) 0
------------------------	---------------------------------------	-----------------------------------



MIRL Rwy 15-33 (L)
 REIL Rws 6 and 24 (L)
 HIRL Rwy 6-24 (L)

1900	3200	TRUNT	Visual Segment - Obstacles.
↑	↪	✧	
RW24 1440		CUVBA 2.9 NM to RW24 2300	NOKAA 239° 2300
TRUNT 3200			
2.9 NM		2.1 NM	
4.8 NM			
CATEGORY	A	B	C
CIRCLING	1200-1 508 (600-1)	1320-1 628 (700-1)	1640-2¾ 948 (1000-2¾)
			D 2140-3 1448 (1500-3)

NE-2, 22 FEB 2024 to 21 MAR 2024

NE-2, 22 FEB 2024 to 21 MAR 2024

APP CRS	Rwy Idg	N/A
059°	TDZE	N/A
	Apt Elev	692

RNAV (GPS)-B

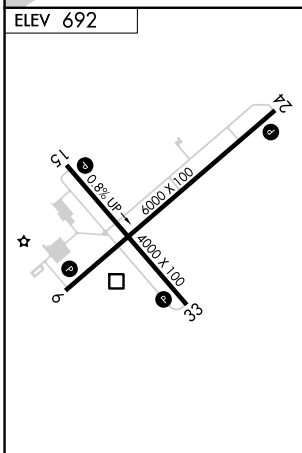
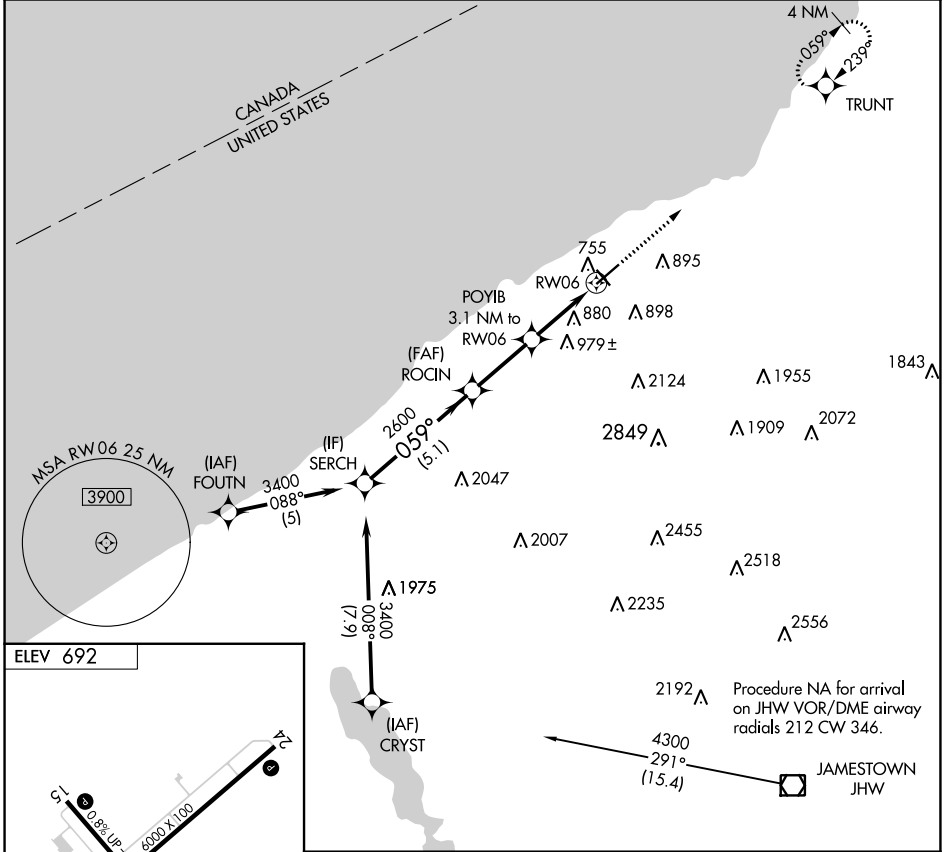
CHAUTAUGUA COUNTY/DUNKIRK (DKK)

RNP APCH.

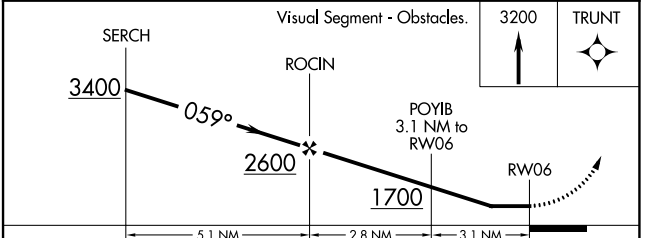
Circling to Rwy 6, 24, 33 NA at night.
 Circling Cat D NA southeast of Rwy 6 and southwest of Rwy 33.
 -22°C

MISSED APPROACH: Climb to 3200 direct TRUNT and hold.

ASOS 119.275	BUFFALO APP CON 126.5 317.6	UNICOM 123.075 (CTAF)
------------------------	---------------------------------------	---------------------------------



MIRL Rwy 15-33
 REIL Rwy 6 and 24
 HIRL Rwy 6-24



CATEGORY	A	B	C	D
CIRCLING	1200-1 508 (600-1)	1320-1 628 (700-1)	1640-2¾ 948 (1000-2¾)	2140-3 1448 (1500-3)

NE-2, 22 FEB 2024 to 21 MAR 2024

NE-2, 22 FEB 2024 to 21 MAR 2024