

LOC/DME I-SIC 111.55 Chan 52 (Y)	APP CRS 186°	Rwy Idg TDZE 875 Apt Elev 896	11000
--	------------------------	---	--------------

ILS RWY 18C (SA CAT I & II)

CINCINNATI/NORTHERN KENTUCKY INTL (CVG)

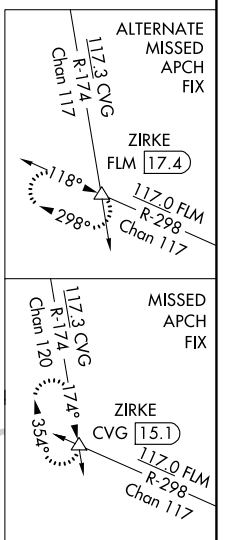
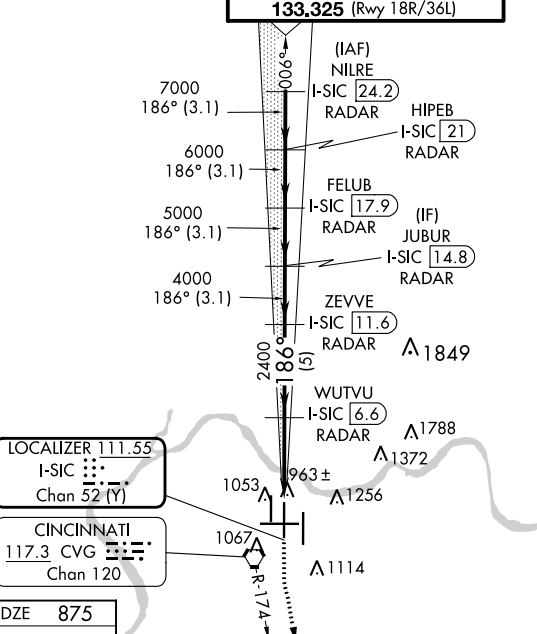
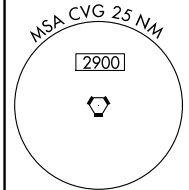
RADAR required for procedure entry. DME or RADAR required.

Simultaneous approach authorized. SA CAT I: Requires specific OPSPEC, MSPEC, or LOA approval and use of HUD to DH.
SA CAT II: Reduced Lighting: Requires specific OPSPEC, MSPEC, or LOA approval and use of autoland or HUD to touchdown.

MALSR

MISSED APPROACH: Climb to 1500 then climbing left turn to 3000 on CVG R-174 to ZIRKE INT/CVG 15.1 DME and hold.

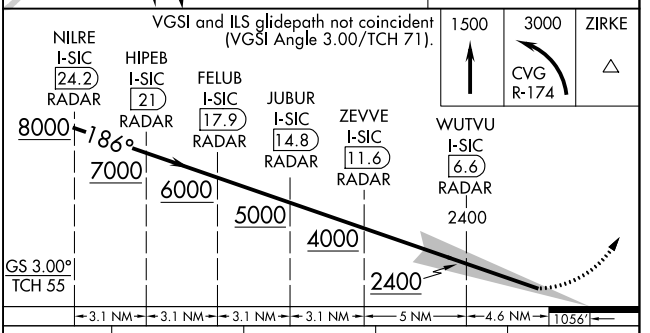
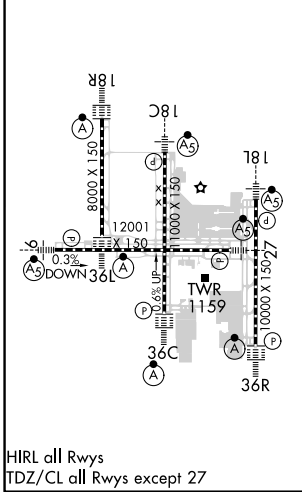
D-ATIS ARR 134.375 DEP 135.3	CINCINNATI APP CON 119.7 363.15 (090°-269°) 123.875 363.15 (270°-089°)	CINCINNATI TOWER 118.975 360.85 (Rwy 18L/36R) 118.3 (Rwys 18C/36C, 09/27) 133.325 (Rwy 18R/36L)	GND CON 121.7	CLNC DEL 127.175	CPDLC
---	--	---	-------------------------	----------------------------	-------



LOCALIZER 111.55
I-SIC [111.55]
Chan 52 (Y)

CINCINNATI 117.3 CVG
Chan 120

ELEV 896	TDZE 875
-----------------	-----------------



CATEGORY	A	B	C	D
S-ILS 18C	SA CAT I RA 191/16 150 DA 1025			
S-ILS 18C	SA CAT II RA 100/12 100 DA 975			

SA CATEGORY I & II ILS-SPECIAL AIRCREW & AIRCRAFT CERTIFICATION REQUIRED

SE-1, 22 FEB 2024 to 21 MAR 2024

SE-1, 22 FEB 2024 to 21 MAR 2024

LOC/DME I-CJN 110.75 Chan 44 (Y)	APP CRS 186°	Rwy Idg TDZE Apt Elev 8000 868 896
--	------------------------	--

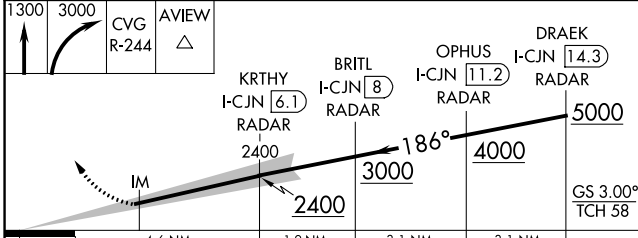
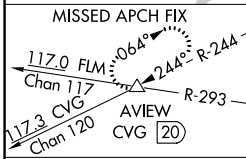
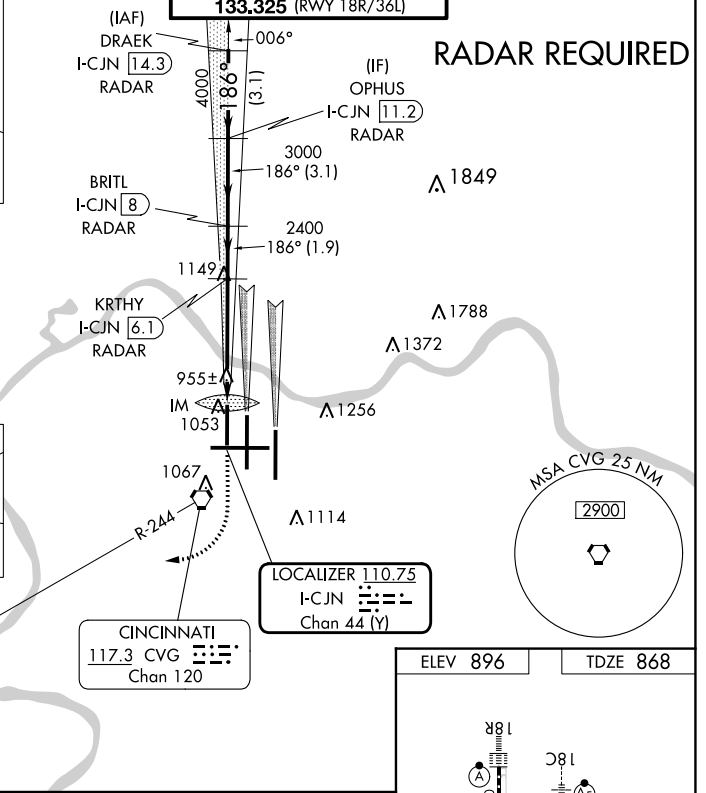
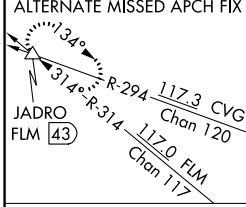
ILS RWY 18R (CAT II)

CINCINNATI/NORTHERN KENTUCKY INTL (CVG)

Simultaneous approach authorized with Rwy 18C and 18L.
DME or radar required.

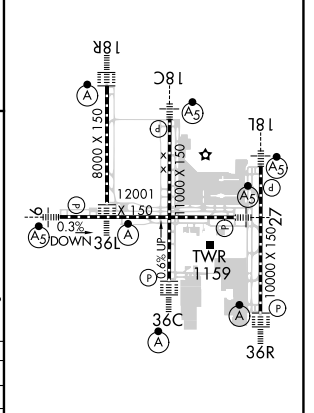
ALSIF-2 MISSED APPROACH: Climb to 1300 then climbing right turn to 3000 via CVG R-244 to AVIEW INT/ CVG 20 DME and hold.

D-ATIS ARR 134.375 DEP 135.3	CINCINNATI APP CON 119.7 363.15 (090°-269°) 123.875 363.15 (270°-089°)	CINCINNATI TOWER 118.975 360.85 (RWY 18L/36R) 118.3 (RWYS 18C/36C, 09/27) 133.325 (RWY 18R/36L)	GND CON 121.7	CLNC DEL 127.175	CPDLC
---	--	---	-------------------------	----------------------------	-------



CATEGORY	A	B	C	D
S-ILS-18R		RA 113/12	100	DA 968

ELEV 896	TDZE 868
----------	----------



CATEGORY II ILS - SPECIAL AIRCREW & AIRCRAFT CERTIFICATION REQUIRED

HIRL all Rwy's
TDZ/CL all Rwy's except 27

SE-1, 22 FEB 2024 to 21 MAR 2024

SE-1, 22 FEB 2024 to 21 MAR 2024

LOC I-JDP 108.7	APP CRS 276°	Rwy Idg 12001
		TDZE 875
		Apt Elev 896

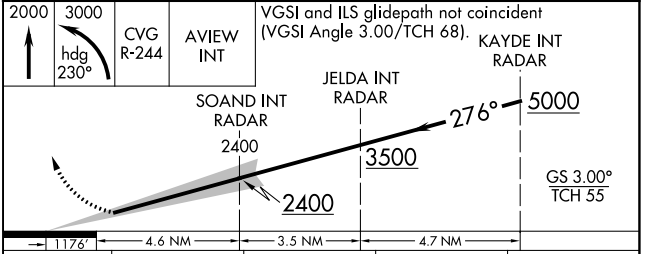
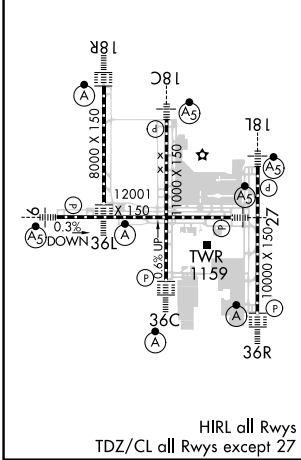
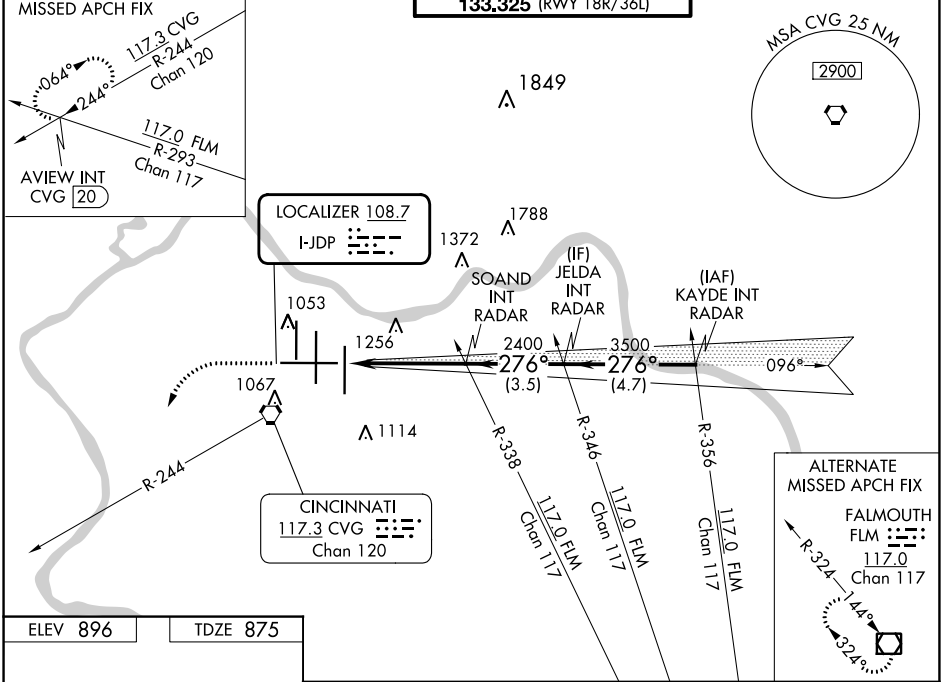
ILS RWY 27 (SA CAT I & II)
CINCINNATI/NORTHERN KENTUCKY INTL (CVG)

RADAR required for procedure entry.

SA Cat I & II: Requires specific OPSPEC, MSPEC, or LOA approval.

MALSR MISSED APPROACH: Climb to 2000 then climbing left turn to 3000 on heading 230° and CVG R-244 to AVIEW INT/CVG 20 DME and hold.

D-ATIS ARR 134.375 DEP 135.3	CINCINNATI APP CON 119.7 363.15 (090°-269°) 123.875 363.15 (270°-089°)	CINCINNATI TOWER 118.975 360.85 (RWY 18L/36R) 118.3 (RWYS 18C/36C, 09/27) 133.325 (RWY 18R/36L)	GND CON 121.7	CLNC DEL 127.175	CPDLC
---	--	---	-------------------------	----------------------------	-------



CATEGORY	A	B	C	D
S-ILS 27	SA CAT I	RA 137/14	150 DA 1025	
S-ILS 27	SA CAT II	RA 90/12	100 DA 975	

SA CATEGORY I & II ILS - SPECIAL AIRCREW & AIRCRAFT CERTIFICATION REQUIRED

SE-1, 22 FEB 2024 to 21 MAR 2024

SE-1, 22 FEB 2024 to 21 MAR 2024

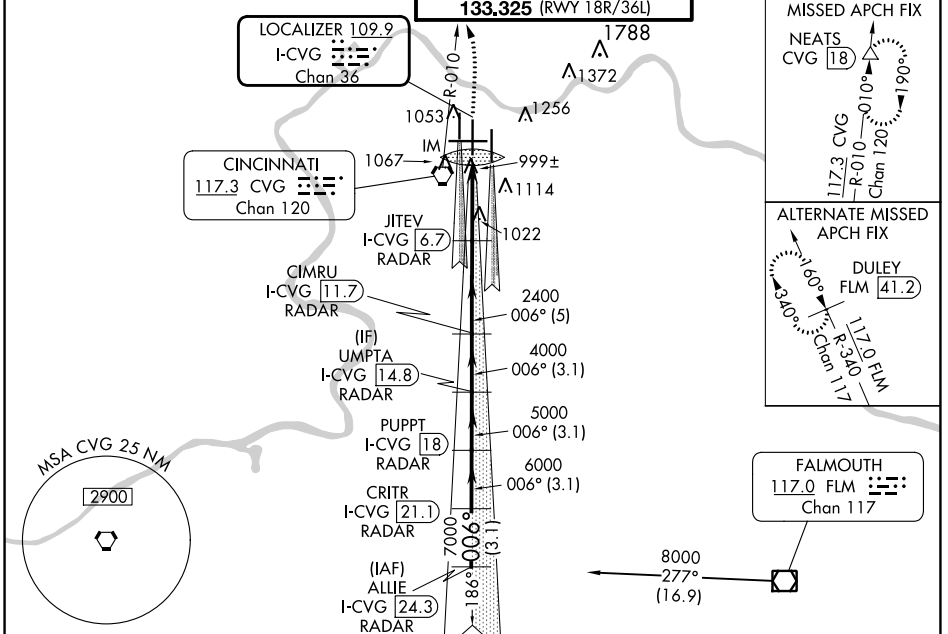
LOC/DME I-CVG 109.9 Chan 36	APP CRS 006°	Rwy Idg 11000 TDZE 851 Apt Elev 896
--	------------------------	--

ILS RWY 36C (CAT II & III)

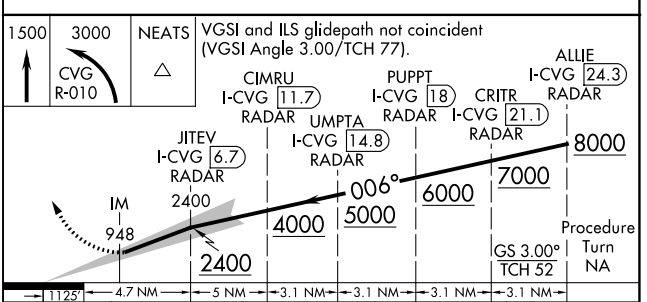
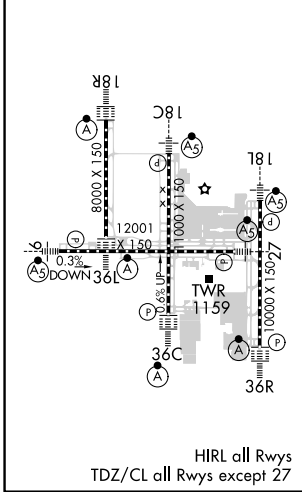
CINCINNATI/NORTHERN KENTUCKY INTL (CVG)

<p>Simultaneous approach authorized with Rwy 36L/R. DME required.</p>	<p>ALSIF-2</p>	<p>MISSED APPROACH: Climb to 1500 then climbing left turn to 3000 via CVG R-010 to NEATS Int/18 DME and hold.</p>
---	----------------	---

D-ATIS ARR 134.375 DEP 135.3	CINCINNATI APP CON 119.7 363.15 (090°-269°) 123.875 363.15 (270°-089°)	CINCINNATI TOWER 118.975 360.85 (RWY 18L/36R) 118.3 (RWYS 18C/36C, 09/27) 133.325 (RWY 18R/36L)	GND CON 121.7	CLNC DEL 127.175	CPDLC
---	--	---	-------------------------	----------------------------	-------



ELEV 896	TDZE 851
----------	----------



CATEGORY	A	B	C	D
S-ILS-36C	CAT II RA 134/12 100 DA 951			
S-ILS 36C	CAT IIIa RVR 07			
S-ILS 36C	CAT IIIb RVR 06			
S-ILS 36C	CAT IIIc NA			

CATEGORY II & III ILS - SPECIAL AIRCREW & AIRCRAFT CERTIFICATION REQUIRED

SE-1, 22 FEB 2024 to 21 MAR 2024

SE-1, 22 FEB 2024 to 21 MAR 2024

LOC/DME I-VAC 110.75 Chan 44 (Y)	APP CRS 006°	Rwy Idg TDZE Apt Elev 8000 873 896
--	------------------------	--

ILS RWY 36L (CAT II)

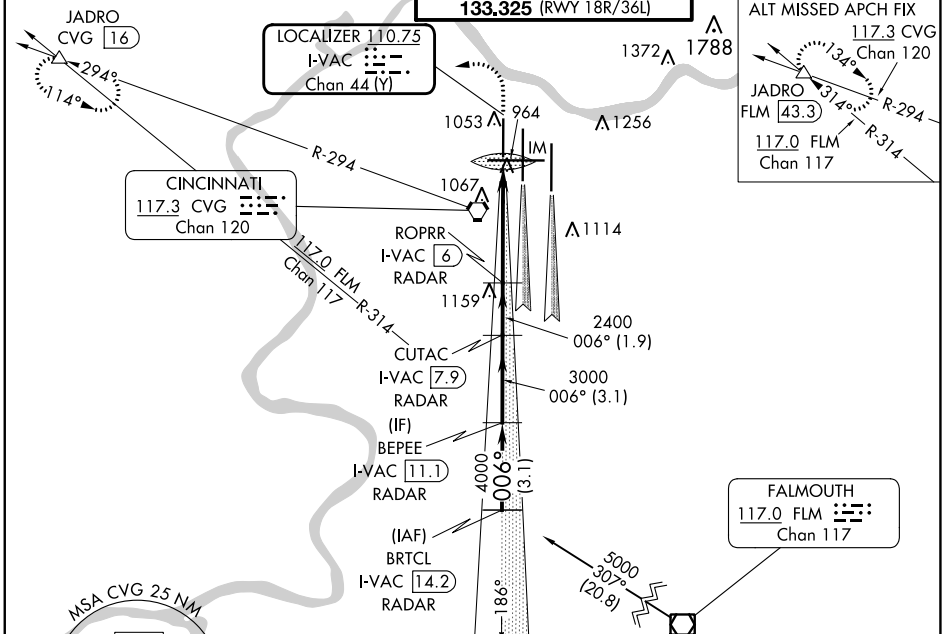
CINCINNATI/NORTHERN KENTUCKY INTL (CVG)

Simultaneous approach authorized with Rwy 36C and 36R. DME required.

ALSIF-2

MISSED APPROACH: Climb to 1300 then climbing left turn to 3000 via heading 270° and CVG R-294 to JADRO/CVG 16 DME and hold.

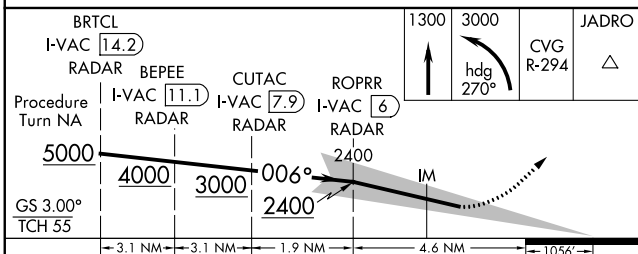
D-ATIS ARR 134.375 DEP 135.3	CINCINNATI APP CON 119.7 363.15 (090°-269°) 123.875 363.15 (270°-089°)	CINCINNATI TOWER 118.975 360.85 (RWY 18L/36R) 118.3 (RWYS 18C/36C, 09/27) 133.325 (RWY 18R/36L)	GND CON 121.7	CLNC DEL 127.175	CPDLC
---	--	---	-------------------------	----------------------------	-------



SE-1, 22 FEB 2024 to 21 MAR 2024

SE-1, 22 FEB 2024 to 21 MAR 2024

DME or RADAR REQUIRED



CATEGORY	A	B	C	D
S-ILS-36L		RA 98/12	100	DA 973

CATEGORY II ILS - SPECIAL AIRCREW & AIRCRAFT CERTIFICATION REQUIRED

ALT MISSED APCH FIX

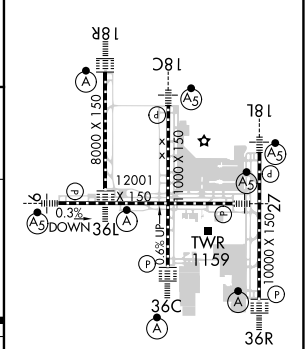
117.3 CVG Chan 120

JADRO **FLM 43.3**

117.0 FLM Chan 117

FALMOUTH **117.0 FLM** Chan 117

ELEV **896** TDZE **873**



HIRL all Rwys
TDZ/CL all Rwys except 27

LOC/DME I-EEI 110.35 Chan 40 (Y)	APP CRS 006°	Rwy Idg TDZE Apt Elev 10000 896 896
---	------------------------	---

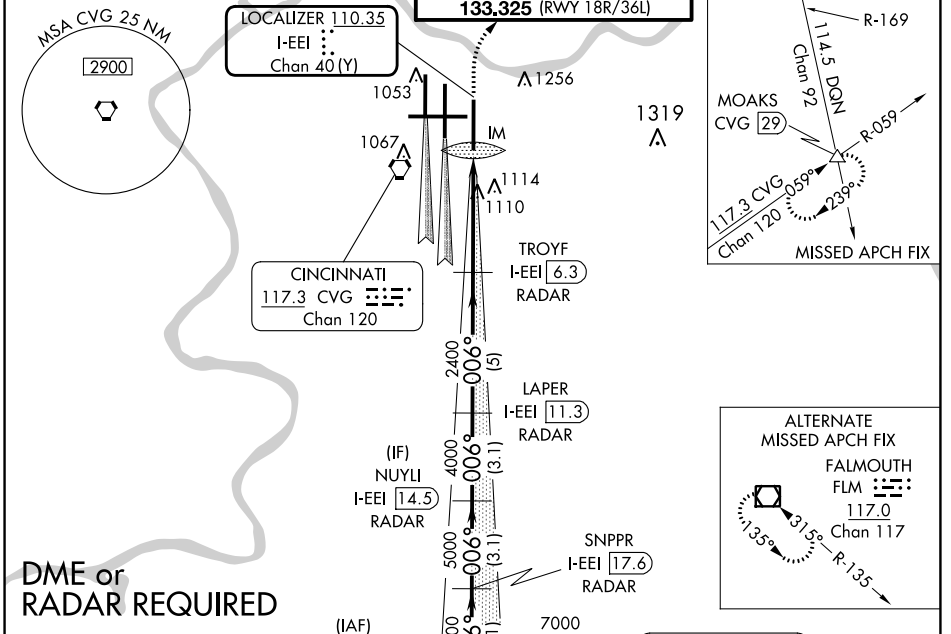
ILS RWY 36R (CAT II & III)

CINCINNATI/NORTHERN KENTUCKY INTL (CVG)

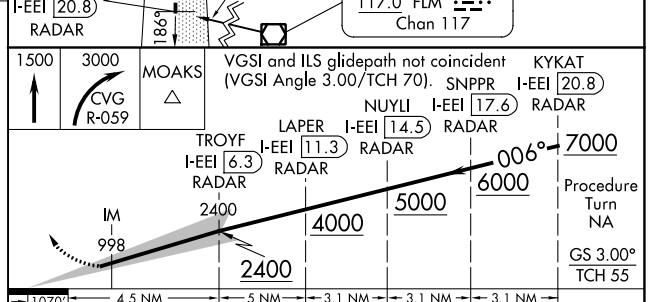
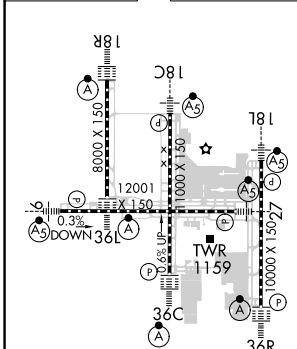
Simultaneous approach authorized with Rwy 36C and 36L. DME or radar required.

ALSIF-2
MISSED APPROACH: Climb to 1500 then climbing right turn to 3000 via CVG R-059 to MOAKS Int/CVG 29 DME and hold.

D-ATIS ARR 134.375 DEP 135.3	CINCINNATI APP CON 119.7 363.15 (090°-269°) 123.875 363.15 (270°-089°)	CINCINNATI TOWER 118.975 360.85 (RWY 18L/36R) 118.3 (RWYS 18C/36C, 09/27) 133.325 (RWY 18R/36L)	GND CON 121.7	CLNC DEL 127.175	CPDLC
---	--	---	-------------------------	----------------------------	-------



ELEV 896	TDZE 896
----------	----------



11070	4.5 NM	5 NM	3.1 NM	3.1 NM	3.1 NM
CATEGORY	A	B	C	D	
S-ILS 36R	CAT II RA 98/12 100 DA 996				
S-ILS 36R	CAT IIIa RVR 07				
S-ILS 36R	CAT IIIb RVR 06				
S-ILS 36R	CAT IIIc NA				

CATEGORY II & III ILS - SPECIAL AIRCREW & AIRCRAFT CERTIFICATION REQUIRED

SE-1, 22 FEB 2024 to 21 MAR 2024

SE-1, 22 FEB 2024 to 21 MAR 2024

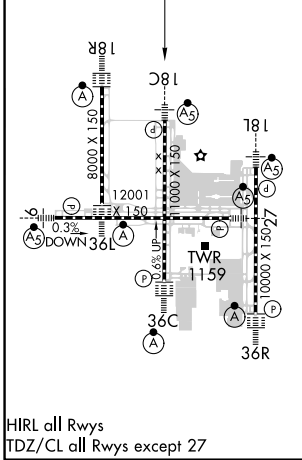
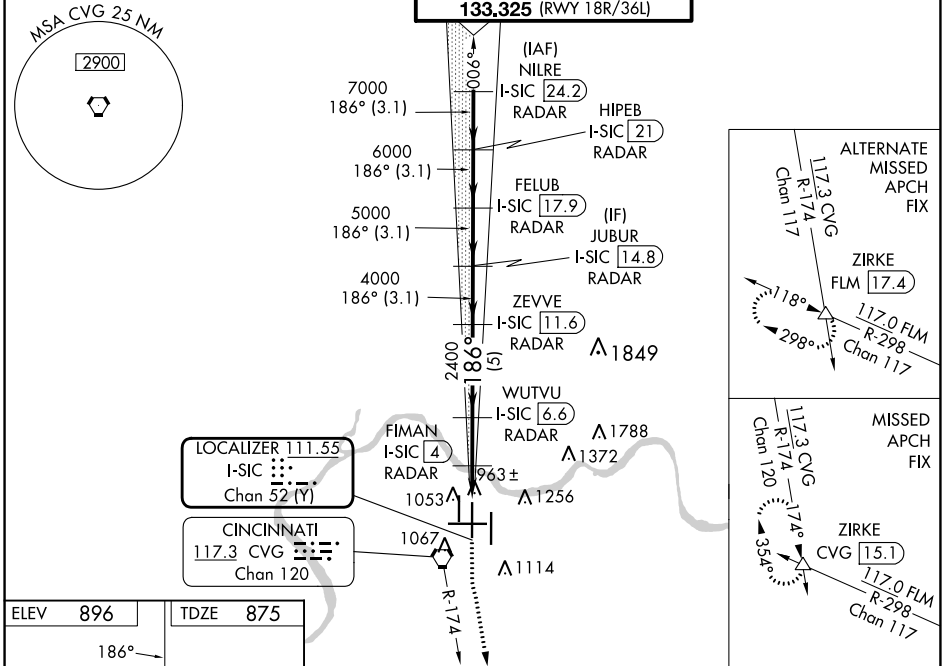
LOC/DME I-SIC 111.55 Chan 52 (Y)	APP CRS 186°	Rwy Idg 11000 TDZE 875 Apt Elev 896
--	------------------------	--

ILS or LOC RWY 18C

CINCINNATI/NORTHERN KENTUCKY INTL (CVG)

RADAR required for procedure entry. DME or RADAR required.	MALSR	MISSED APPROACH: Climb to 1500 then climbing left turn to 3000 on CVG R-174 to ZIRKE INT/CVG 15.1 DME and hold.
Simultaneous approach authorized.		

D-ATIS ARR 134.375 DEP 135.3	CINCINNATI APP CON 119.7 363.15 (090°-269°) 123.875 363.15 (270°-089°)	CINCINNATI TOWER 118.975 360.85 (RWY 18L/36R) 118.3 (RWYS 18C/36C, 09/27) 133.325 (RWY 18R/36L)	GND CON 121.7	CLNC DEL 127.175	CPDLC
---	--	---	-------------------------	----------------------------	-------



ELEV 896	TDZE 875	VGSi and ILS glidepath not coincident (VGSi Angle 3.00/TCH 71).		1500	3000	ZIRKE			
		NILRE I-SIC [24.2] RADAR	HIPEB I-SIC [21] RADAR	FELUB I-SIC [17.9] RADAR	JUBUR I-SIC [14.8] RADAR	ZEVVE I-SIC [11.6] RADAR	WUTVU I-SIC [6.6] RADAR	FIMAN I-SIC [4] RADAR	* I-SIC [3] * I-SIC [2]
		8000	7000	6000	5000	4000	2400	1560	
		GS 3.00° TCH 55							
		-3.1 NM		-3.1 NM		-5 NM		-2.6 NM	
		A		B		C		D	
		S-ILS 18C		1075/18		200 (200-½)			
		S-LOC 18C		1260/24		385 (400-½)		1260/35 385 (400-¾)	
		CIRCLING		1460-1		564 (600-1)		1560-1¾ 664 (700-1¾) 1560-2 664 (700-2)	

SE-1, 22 FEB 2024 to 21 MAR 2024

SE-1, 22 FEB 2024 to 21 MAR 2024

LOC/DME I-CIZ 110.15 Chan 38 (Y)	APP CRS 186°	Rwy Idg TDZE 889 Apt Elev 896	10000
--	------------------------	---	--------------

ILS or LOC RWY 18L

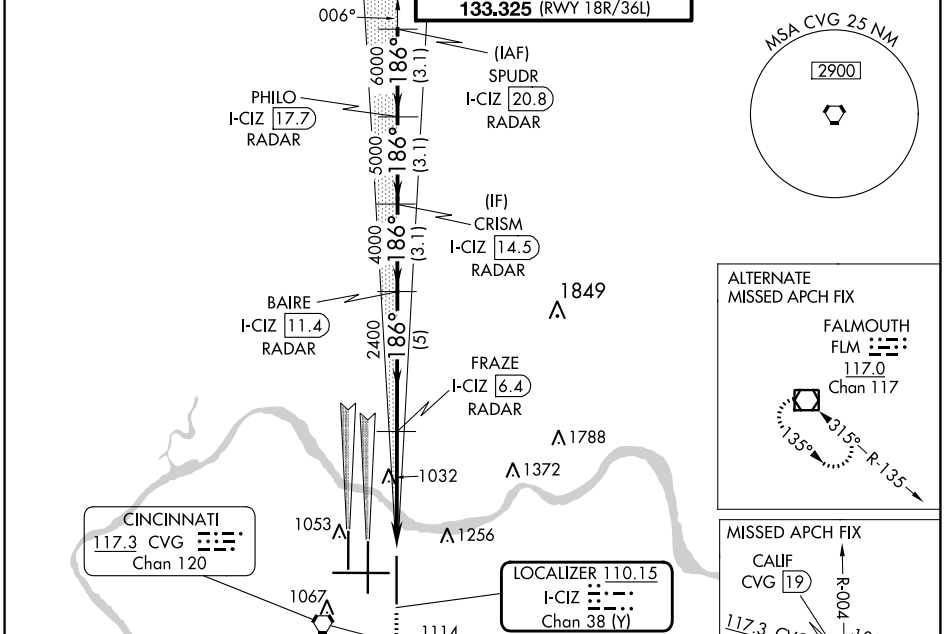
CINCINNATI/NORTHERN KENTUCKY INTL (CVG)

RADAR required for procedure entry. DME or RADAR required.

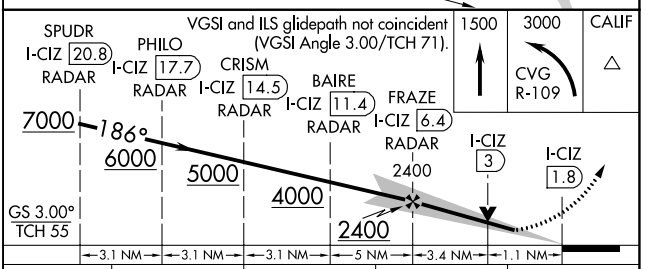
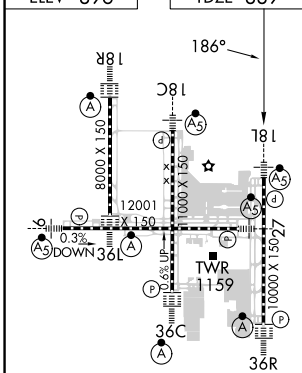
Simultaneous approach authorized with Rwy 18C and 18R. For inop ALS, increase S-LOC 18L Cat C and D visibility to RVR 6000.

MALSR MISSED APPROACH: Climb to 1500 then climbing left turn to 3000 on CVG R-109 to CALIF INT/CVG 19 DME and hold.

D-ATIS ARR 134.375 DEP 135.3	CINCINNATI APP CON 119.7 363.15 (090°-269°) 123.875 363.15 (270°-089°)	CINCINNATI TOWER 118.975 360.85 (RWY 18L/36R) 118.3 (RWYS 18C/36C, 09/27) 133.325 (RWY 18R/36L)	GND CON 121.7	CLNC DEL 127.175	CPDLC
---	--	---	-------------------------	----------------------------	-------



ELEV 896	TDZE 889
----------	----------



CATEGORY	A	B	C	D
S-ILS 18L	1089/18 200 (200-½)			
S-LOC 18L	1300/24	411 (500-½)	1300/40	411 (500-¾)
<input checked="" type="checkbox"/> CIRCLING	1460-1	564 (600-1)	1560-1¾ 664 (700-1¾)	1560-2 664 (700-2)

SE-1, 22 FEB 2024 to 21 MAR 2024

SE-1, 22 FEB 2024 to 21 MAR 2024

LOC/DME I-CJN 110.75 Chan 44 (Y)	APP CRS 186°	Rwy Idg 8000	TDZE 868
		Apt Elev 896	

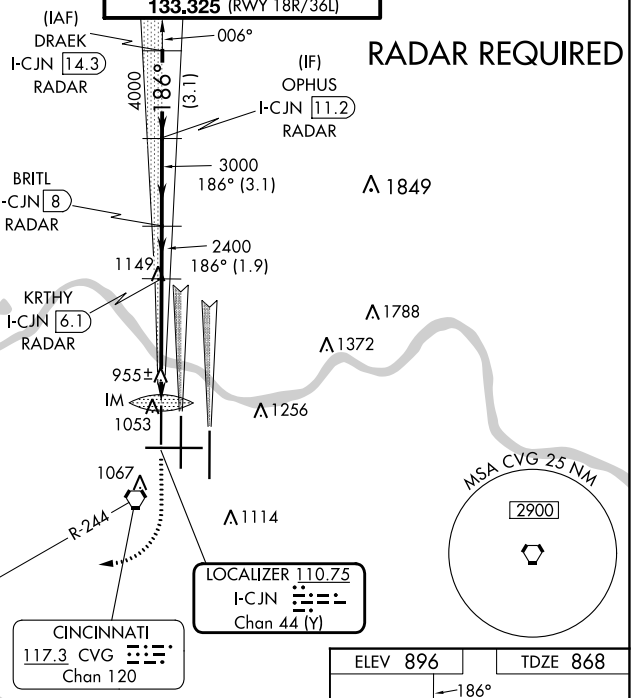
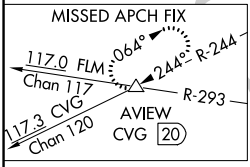
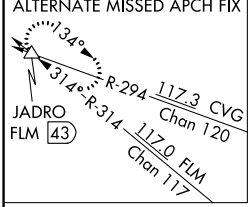
ILS or LOC RWY 18R

CINCINNATI/NORTHERN KENTUCKY INTL (CVG)

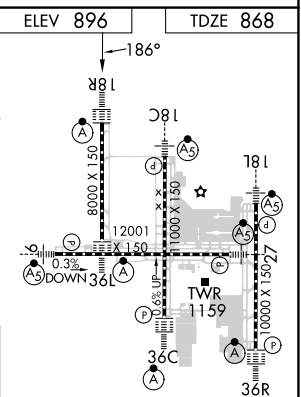
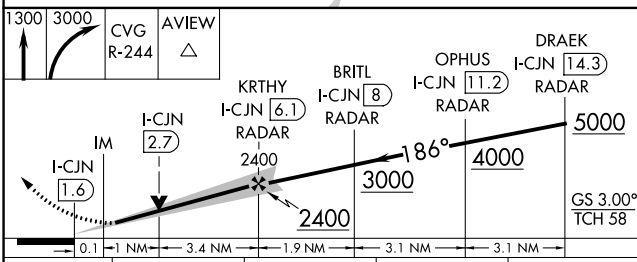
Simultaneous approach authorized with Rwy 18C and 18L.
DME or radar required.

MISSED APPROACH: Climb to 1300 then climbing right turn to 3000 via CVG R-244 to AVIEW INT/ CVG 20 DME and hold.

D-ATIS ARR 134.375 DEP 135.3	CINCINNATI APP CON 119.7 363.15 (090°-249°) 123.875 363.15 (270°-089°)	CINCINNATI TOWER 118.975 360.85 (RWY 18L/36R) 118.3 (RWYS 18C/36C, 09/27) 133.325 (RWY 18R/36L)	GND CON 121.7	CINC DEL 127.175	CPDLC
---	--	---	-------------------------	----------------------------	-------



RADAR REQUIRED



CATEGORY	A	B	C	D
S-ILS 18R	1068/18		200 (200-½)	
S-LOC 18R	1300/24	432 (500-½)	1300/40 432 (500-¾)	1300/50 432 (500-1)
CIRCLING	1460-1	564 (600-1)	1560-1¾ 664 (700-1¾)	1560-2 664 (700-2)

HIRL all Rwy's					
TDZ/CL all Rwy's except 27					
FAF to MAP 4.6 NM					
Knots	60	90	120	150	180
Min:Sec	4:36	3:04	2:18	1:50	1:32

SE-1, 22 FEB 2024 to 21 MAR 2024

SE-1, 22 FEB 2024 to 21 MAR 2024

LOC I-JDP 108.7	APP CRS 276°	Rwy Idg TDZE Apt Elev	12001 875 896
---------------------------	------------------------	-----------------------------	--


ILS or LOC RWY 27

CINCINNATI/NORTHERN KENTUCKY INTL (CVG)

RADAR required for procedure entry.

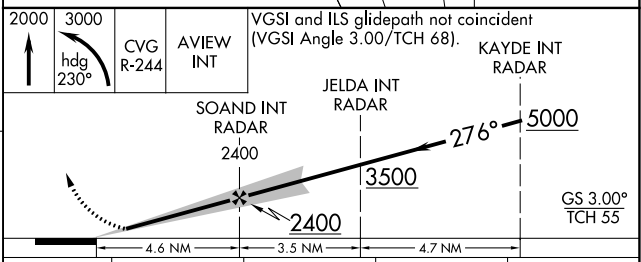
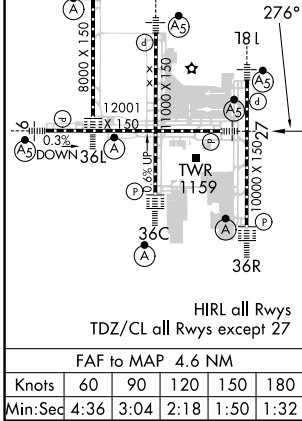
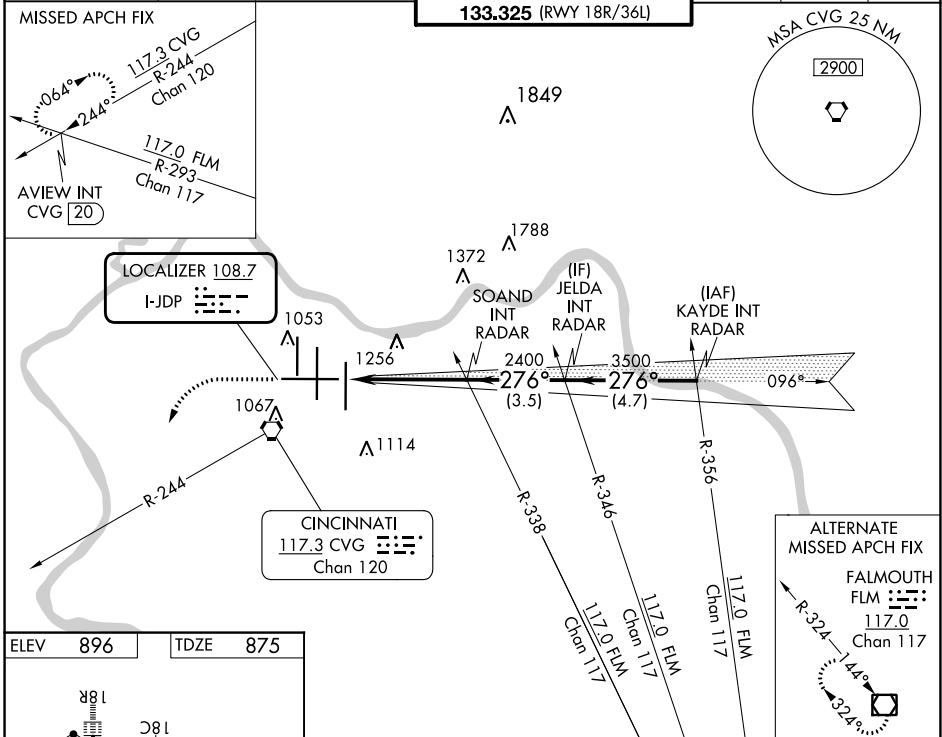
▼ For inop ALS, increase S-LOC 27 Cat C/D visibility to 1½ SM.
 ** RVR 1800 authorized with use of FD or AP or HUD to DA.

MALSRL



MISSED APPROACH: Climb to 2000 then climbing left turn to 3000 on heading 230° and CVG R-244 to AVIEW INT/CVG 20 DME and hold.

D-ATIS ARR 134.375	DEP 135.3	CINCINNATI APP CON 119.7 363.15 (090°-269°) 123.875 363.15 (270°-089°)	CINCINNATI TOWER 118.975 360.85 (RWY 18L/36R) 118.3 (RWYS 18C/36C, 09/27) 133.325 (RWY 18R/36L)	GND CON 121.7	CLNC DEL 127.175	CPDLC
---------------------------------	---------------------	--	---	-------------------------	----------------------------	-------



CATEGORY	A	B	C	D
S-ILS 27 **	1075/24 200 (200-½)			
S-LOC 27	1340/24	465 (500-½)	1340/50	465 (500-1)
☑ CIRCLING	1460-1	564 (600-1)	1560-1¾ 664 (700-1¾)	1560-2 664 (700-2)

SE-1, 22 FEB 2024 to 21 MAR 2024

SE-1, 22 FEB 2024 to 21 MAR 2024

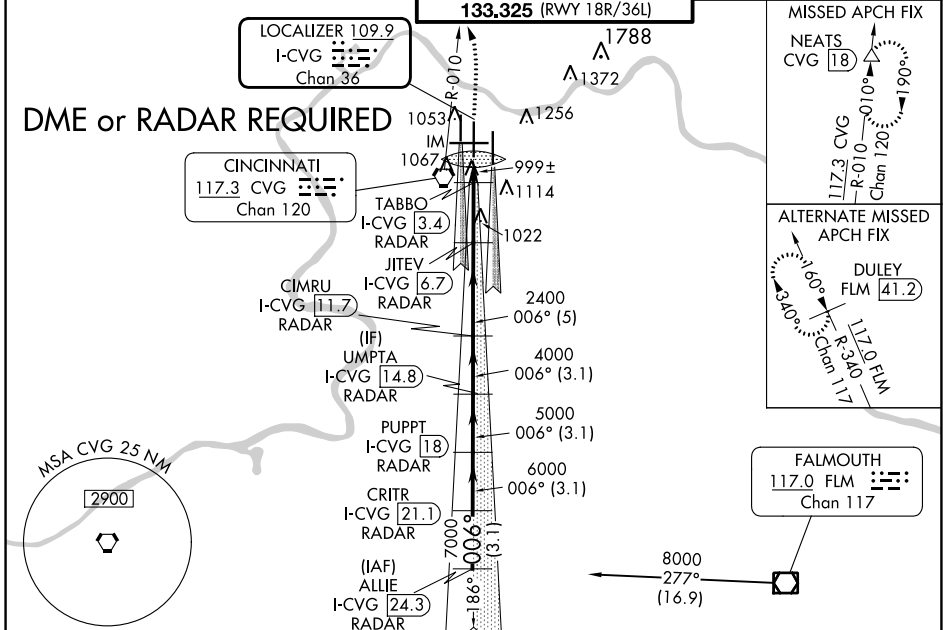
LOC/DME I-CVG 109.9 Chan 36	APP CRS 006°	Rwy Idg 11000 TDZE 851 Apt Elev 896
--	------------------------	--

ILS or LOC RWY 36C

CINCINNATI/NORTHERN KENTUCKY INTL (CVG)

<p>▽ Simultaneous approach authorized with Rwy 36L/R. △ DME required.</p>	<p>ALSF-2 </p>	<p>MISSED APPROACH: Climb to 1500 then climbing left turn to 3000 via CVG R-010 to NEATS/CVG 18 DME and hold.</p>
---	--------------------	---

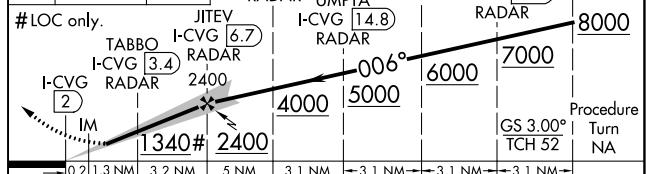
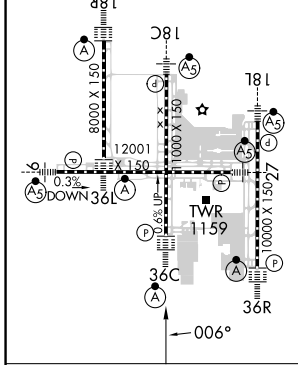
D-ATIS ARR 134.375 DEP 135.3	CINCINNATI APP CON 119.7 363.15 (090°-269°) 123.875 363.15 (270°-089°)	CINCINNATI TOWER 118.975 360.85 (RWY 18L/36R) 118.3 (RWYS 18C/36C, 09/27) 133.325 (RWY 18R/36L)	GND CON 121.7	CLNC DEL 127.175	CPDLC
---	--	---	-------------------------	----------------------------	-------



SE-1, 22 FEB 2024 to 21 MAR 2024

SE-1, 22 FEB 2024 to 21 MAR 2024

ELEV 896	TDZE 851	1500	3000	NEATS	VGSI and ILS glidepath not coincident (VGSI Angle 3.00/TCH 77).	ALLIE I-CVG 24.3
TDZ/CL all Rwy's except 27 HIRL all Rwy's		↑	CVG R-010	△		



CATEGORY	A	B	C	D
S-ILS 36C	1051/18 200 (200-½)			
S-LOC 36C	1340/24	489 (500-½)	1340/50	489 (500-1)
CIRCLING	1460-1	564 (600-1)	1560-1¾ 664 (700-1¾)	1560-2 664 (700-2)
TABBO FIX MINIMUMS				
S-LOC 36C	1260/24	409 (400-½)	1260/40	409 (400-¾)
CIRCLING	1460-1	564 (600-1)	1560-1¾ 664 (700-1¾)	1560-2 664 (700-2)

FAF to MAP 4.7 NM					
Knots	60	90	120	150	180
Min:Sec	4:42	3:08	2:21	1:53	1:34

LOC/DME I-VAC 110.75 Chan 44 (Y)	APP CRS 006°	Rwy Idg 8000	TDZE 873
		Apt Elev 896	

ILS or LOC RWY 36L

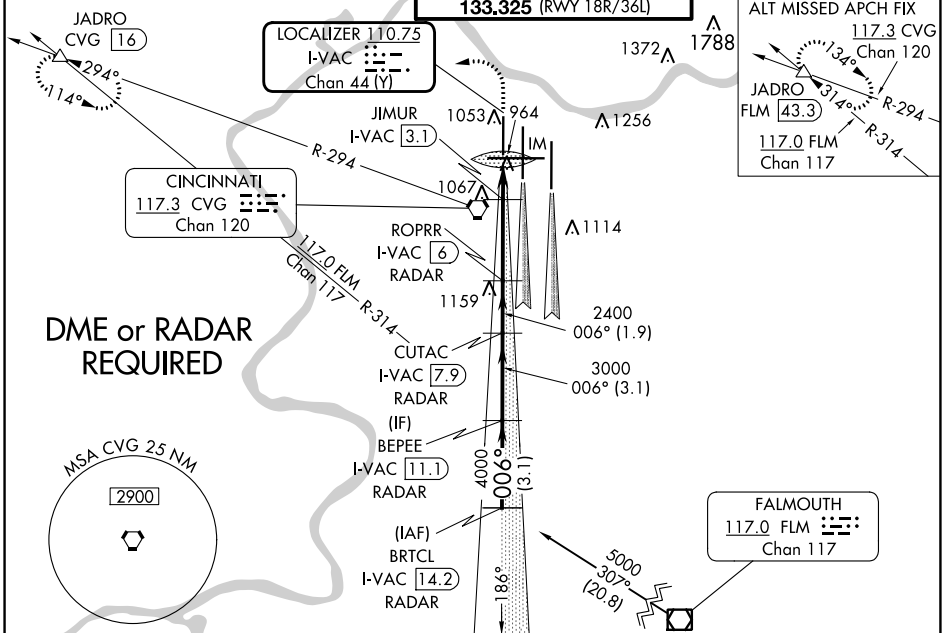
CINCINNATI/NORTHERN KENTUCKY INTL (CVG)

Simultaneous approach authorized with Rwy 36C and 36R. DME required.

ALSf-2

MISSED APPROACH: Climb to 3000 then climbing left turn to 3000 via heading 270° and CVG R-294 to JADRO/CVG 16 DME and hold.

D-ATIS ARR 134.375 DEP 135.3	CINCINNATI APP CON 119.7 363.15 (090°-269°) 123.875 363.15 (270°-089°)	CINCINNATI TOWER 118.975 360.85 (RWY 18L/36R) 118.3 (RWYS 18C/36C, 09/27) 133.325 (RWY 18R/36L)	GND CON 121.7	CLNC DEL 127.175	CPDLC
---	--	---	-------------------------	----------------------------	-------



BRTCL I-VAC 14.2	1300	3000	CVG R-294	JADRO	ELEV 896	TDZE 873
Procedure Turn NA	RADAR BEPEE I-VAC 11.1	CUTAC RADAR I-VAC 7.9	ROPRR RADAR I-VAC 6	JIMUR I-VAC 3.1	**LOC only.	
GS 3.00° TCH 55	5000	4000	3000	006°	2400	2400
				**1440	2.4	1.5
	-3.1 NM	-3.1 NM	-1.9 NM	-2.9 NM	-0.7	-0.2

HRL all Rwys	
TDZ/CL all Rwys except 27	
FAF to MAP 4.6 NM	
Knots	60 90 120 150 180
Min:Seq	4:36 3:04 2:18 1:50 1:32

CATEGORY	A	B	C	D
S-ILS 36L	1073/18 200 (200-½)			
S-LOC 36L	1440/24	567 (600-½)	1440/60	567 (600-1¼)
CIRCLING	1460-1	564 (600-1)	1560-1¾ 664 (700-1¾)	1560-2 664 (700-2)
JIMUR FIX MINIMUMS				
S-LOC 36L	1220/24	347 (400-½)	1220/30	347 (400-¾)
CIRCLING	1460-1	564 (600-1)	1560-1¾ 664 (700-1¾)	1560-2 664 (700-2)

SE-1, 22 FEB 2024 to 21 MAR 2024

SE-1, 22 FEB 2024 to 21 MAR 2024

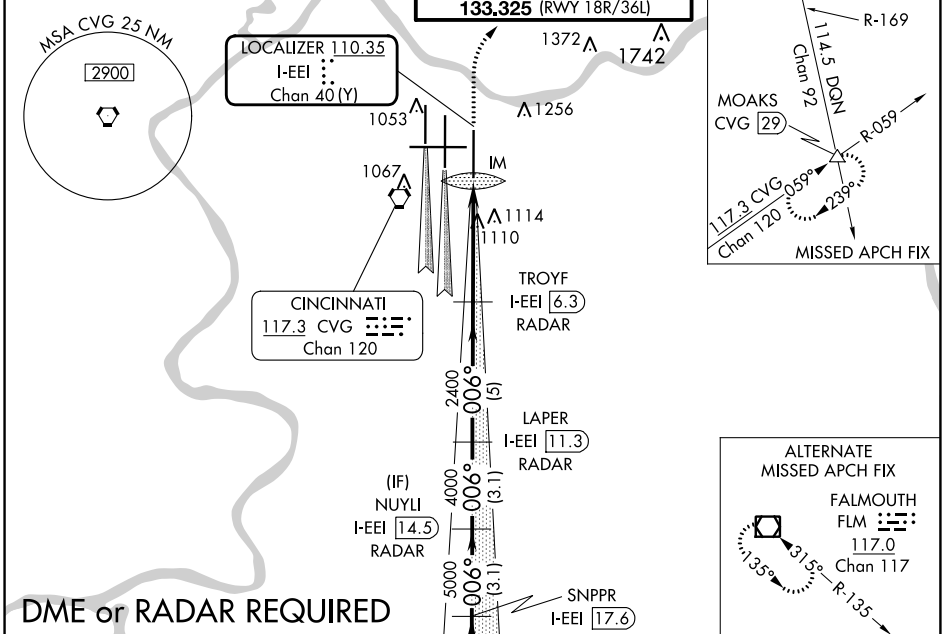
LOC/DME I-EEI 110.35 Chan 40 (Y)	APP CRS 006°	Rwy Idg TDZE 896 Apt Elev 896	10000
---	------------------------	---	--------------

ILS or LOC RWY 36R

CINCINNATI/NORTHERN KENTUCKY INTL (CVG)

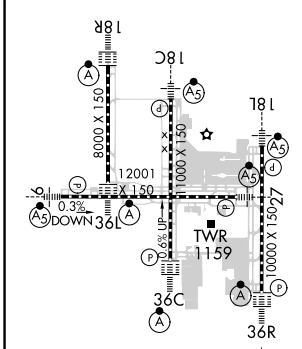
<p>Simultaneous approach authorized with Rwy 36C and 36L.</p> <p>DME or radar required.</p>	<p>ALSF-2</p>	<p>MISSED APPROACH: Climb to 1500 then climbing right turn to 3000 via CVG R-059 to MOAKS Int/ CVG 29 DME and hold.</p>
---	---------------	--

D-ATIS ARR 134.375 DEP 135.3	CINCINNATI APP CON 119.7 363.15 (090°-269°) 123.875 363.15 (270°-089°)	CINCINNATI TOWER 118.975 360.85 (RWY 18L/36R) 118.3 (RWYS 18C/36C, 09/27) 133.325 (RWY 18R/36L)	GND CON 121.7	CLNC DEL 127.175	CPDLC
---	--	---	-------------------------	----------------------------	-------

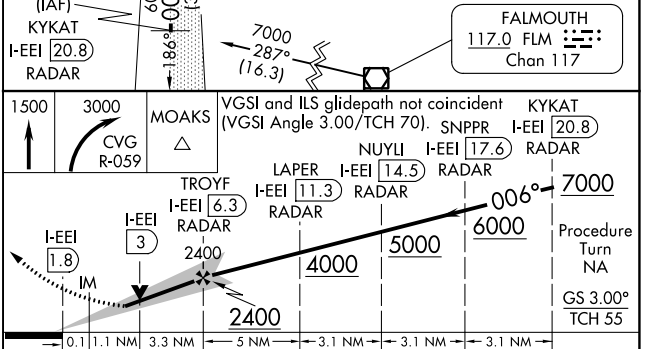


DME or RADAR REQUIRED

ELEV 896	TDZE 896
----------	----------



TDZ/CL all Rwy's except 27 HIRL all Rwy's					
FAF to MAP 4.5 NM					
Knots	60	90	120	150	180
Min:Sec	4:30	3:00	2:15	1:48	1:30



CATEGORY	A	B	C	D
S-ILS 36R	1096/18		200 (200-1/2)	
S-LOC 36R	1360/24	464 (500-1/2)	1360/50	464 (500-1)
CIRCLING	1460-1	564 (600-1)	1560-1 3/4 664 (700-1 3/4)	1560-2 664 (700-2)

SE-1, 22 FEB 2024 to 21 MAR 2024

SE-1, 22 FEB 2024 to 21 MAR 2024

LOC/DME I-URN 111.9 Chan 56	APP CRS 096°	Rwy Idg 12001 TDZE 883 Apt Elev 896
---	------------------------	--

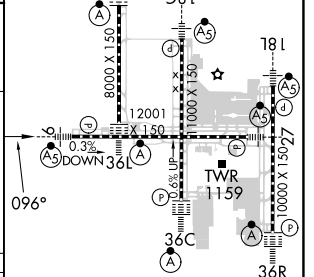
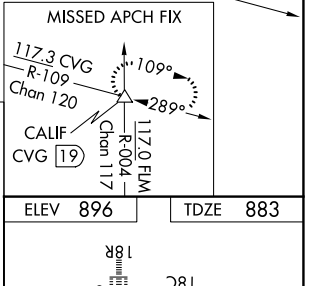
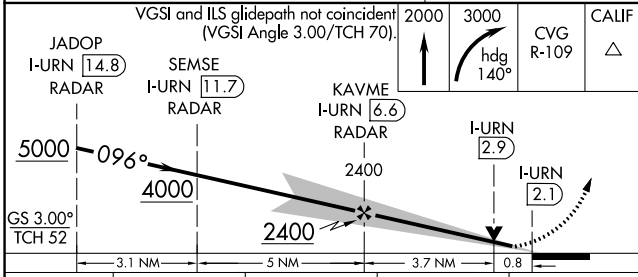
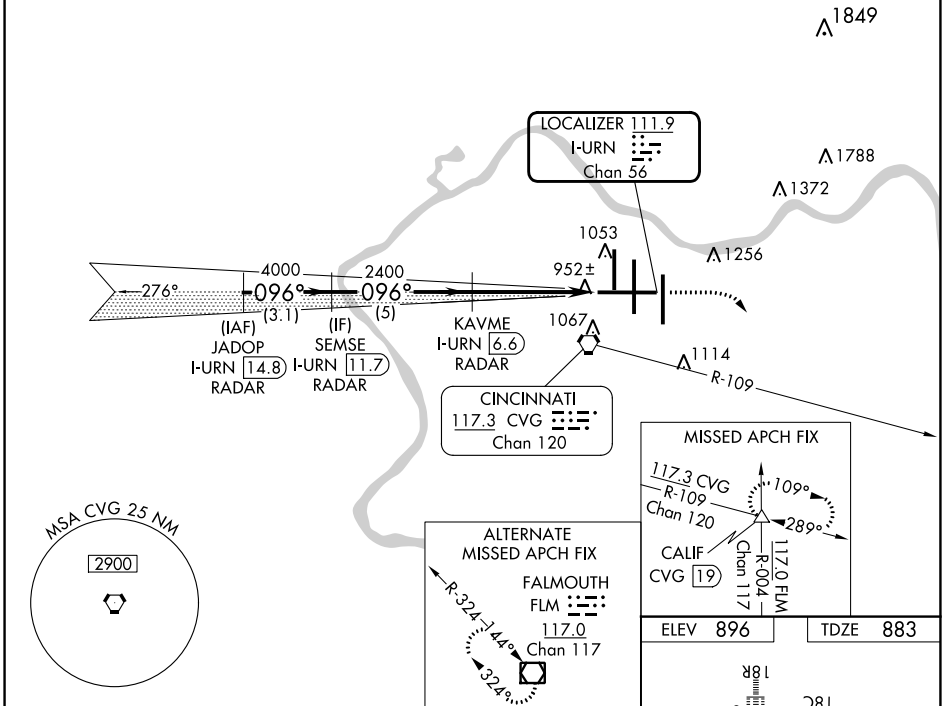
ILS or LOC RWY 9

CINCINNATI/NORTHERN KENTUCKY INTL (CVG)

RADAR required for procedure entry. DME or RADAR required.
 ▼ For inop ALS increase S-LOC 9 Cats C/D visibility to RVR 5500.

MALS MISSED APPROACH: Climb to 2000 then climbing right turn to 3000 on heading 140° and CVG R-109 to CALIF INT/CVG 19 DME and hold.

D-ATIS ARR 134.375 DEP 135.3	CINCINNATI APP CON 119.7 363.15 (090°-269°) 123.875 363.15 (270°-089°)	CINCINNATI TOWER 118.975 360.85 (RWY 18L/36R) 118.3 (RWYs 18C/36C, 09/27) 133.325 (RWY 18R/36L)	GND CON 121.7	CLNC DEL 127.175	CPDLC
---	--	---	-------------------------	----------------------------	-------



GS 3.00° TCH 52	2000	3000	CVG R-109	CALIF
JADOP I-URN 14.8 RADAR	SEMSE I-URN 11.7 RADAR	KAVME I-URN 6.6 RADAR	I-URN 2.9	I-URN 2.1
3.1 NM	5 NM	3.7 NM	0.8 NM	
CATEGORY	A	B	C	D
S-ILS 9	1083/18		200 (200-½)	
S-LOC 9	1220/24		337 (400-½)	
			1220/40	
			337 (400-¾)	
CIRCLING	1460-1 564 (600-1)		1560-1¾ 664 (700-1¾)	
			1560-2 664 (700-2)	

HRTL all Rwy's					
TDZ/CL all Rwy's except 27					
FAF to MAP 4.5 NM					
Knots	60	90	120	150	180
Min:Sec	4:30	3:00	2:15	1:48	1:30

SE-1, 22 FEB 2024 to 21 MAR 2024

SE-1, 22 FEB 2024 to 21 MAR 2024

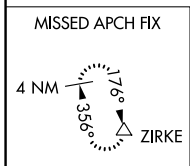
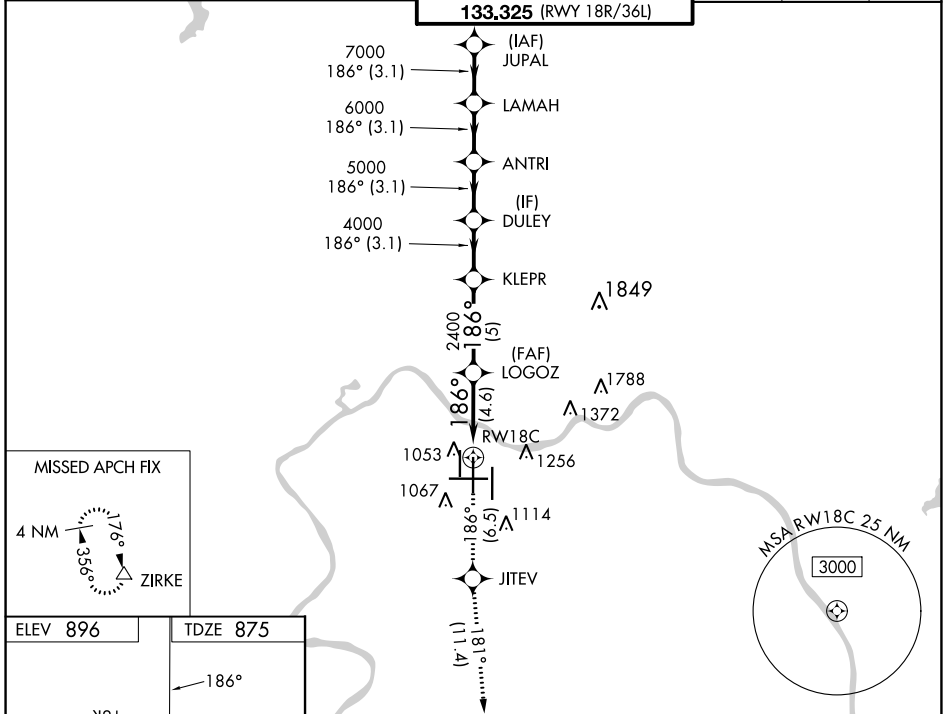
APP CRS	Rwy Idg	11000
186°	TDZE	875
	Apt Elev	896

RNAV (RNP) Z RWY 18C

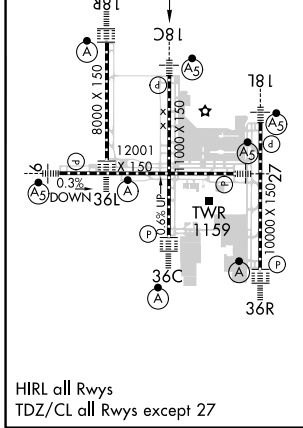
CINCINNATI/NORTHERN KENTUCKY INTL (CVG)

RNP AR APCH - GPS.		MALSR	MISSED APPROACH: Climb to 3000 on track 186° to JITEV and on track 181° to ZIRKE and hold.	
▼ Simultaneous approach authorized. For uncompensated Baro-VNAV systems, procedure NA below -17°C or above 54°C. For inop ALS, increase RNP 0.15 and RNP 0.30 all Cats visibility to 1½ SM.				

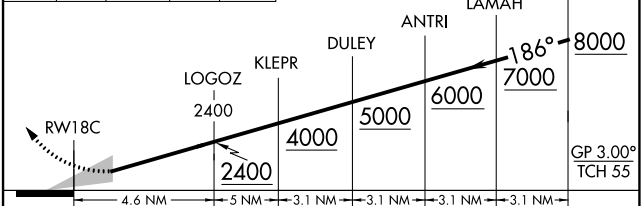
D-ATIS	CINCINNATI APP CON	CINCINNATI TOWER	GND CON	CLNC DEL	CPDLC
ARR 134.375 DEP 135.3	119.7 363.15 (090°-269°) 123.875 363.15 (270°-089°)	118.975 360.85 (RWY 18L/36R) 118.3 (RWYS 18C/36C, 09/27) 133.325 (RWY 18R/36L)	121.7	127.175	



ELEV 896	TDZE 875
-----------------	-----------------



3000	JITEV	ZIRKE	VGSI and RNAV glidepath not coincident (VGSI Angle 3.00/TCH 71).
↑	tr 186°	tr 181°	



CATEGORY	A	B	C	D
RNP 0.15 DA		1323/45	448 (500-7%)	
RNP 0.30 DA		1391/55	516 (500-1)	

AUTHORIZATION REQUIRED

SE-1, 22 FEB 2024 to 21 MAR 2024

SE-1, 22 FEB 2024 to 21 MAR 2024

APP CRS	Rwy Idg	8000
186°	TDZE	868
	Apt Elev	896

RNAV (RNP) Z RWY 18R

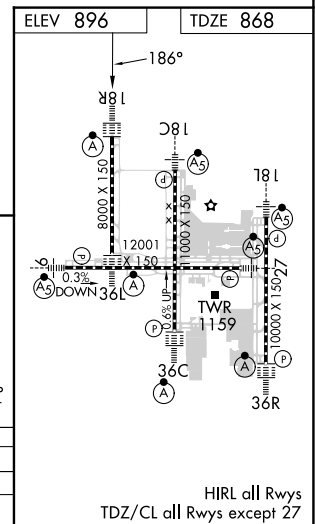
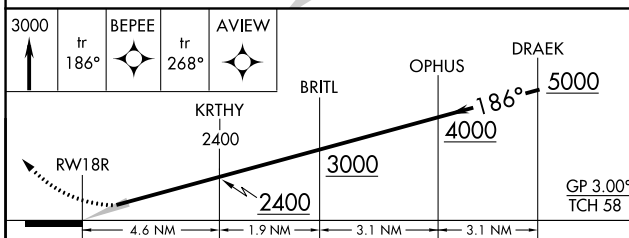
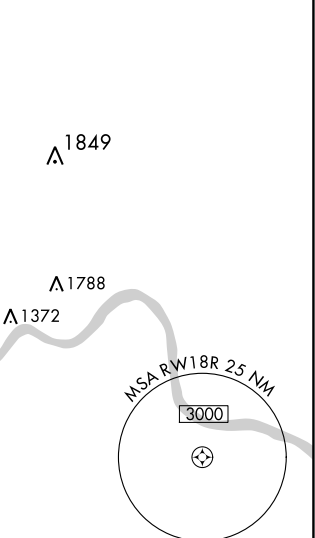
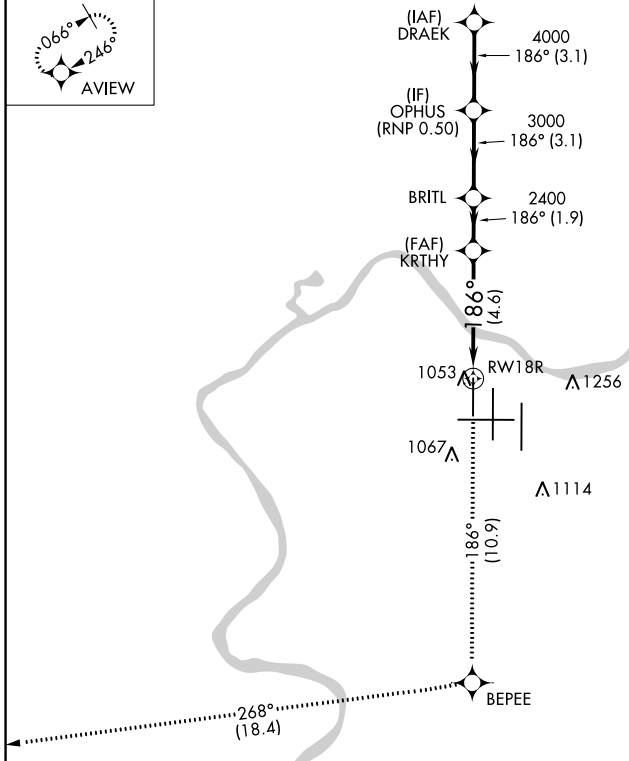
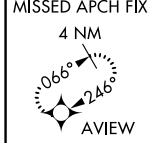
CINCINNATI/NORTHERN KENTUCKY INTL (CVG)

RNP AR APCH - GPS.

Use of FD or AP required during simultaneous operations. Simultaneous approach authorized with Rwy 18C/L. For uncompensated Baro-VNAV systems, procedure NA below -17°C or above 54°C. For inop ALS, increase RNP 0.30 all Cats visibility to RVR 6000.

ALSF-2
 MISSED APPROACH: Climb to 3000 on track 186° BEPEE and on track 268° to AVIEW and hold.

D-ATIS ARR 134.375 DEP 135.3	CINCINNATI APP CON 119.7 363.15 (090°-269°) 123.875 363.15 (270°-089°)	CINCINNATI TOWER 118.975 360.85 (RWY 18L/36R) 118.3 (RWYS 18C/36C, 09/27) 133.325 (RWY 18R/36L)	GN D CON 121.7	CLNC DEL 127.175	CPDLC
---	--	--	--------------------------	----------------------------	-------



CATEGORY	A	B	C	D
RNP 0.30 DA		1287/40	419 (400-¾)	

AUTHORIZATION REQUIRED

HIRL all Rwys
 TDZ/CL all Rwys except 27

SE-1, 22 FEB 2024 to 21 MAR 2024

SE-1, 22 FEB 2024 to 21 MAR 2024

RNAV (RNP) Z RWY 27

CINCINNATI/NORTHERN KENTUCKY INTL (CVG)

APP CRS	Rwy Idg	12001
276°	TDZE	875
	Apt Elev	896

RNP AR APCH - GPS

▽ For uncompensated Baro-VNAV systems, procedure NA below -16° C or above 54° C. For inop ALS, increase RNP 0.23 all Cats visibility to 1½ SM and increase RNP 0.30 all Cats visibility to 1¾ SM.
△ NA

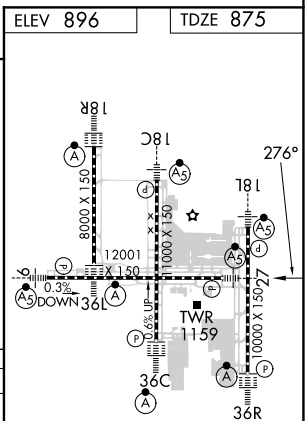
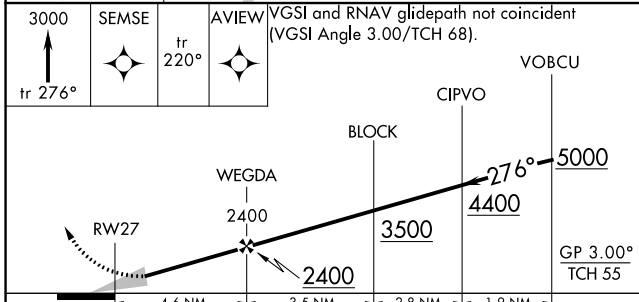
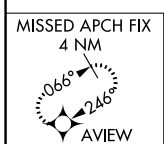
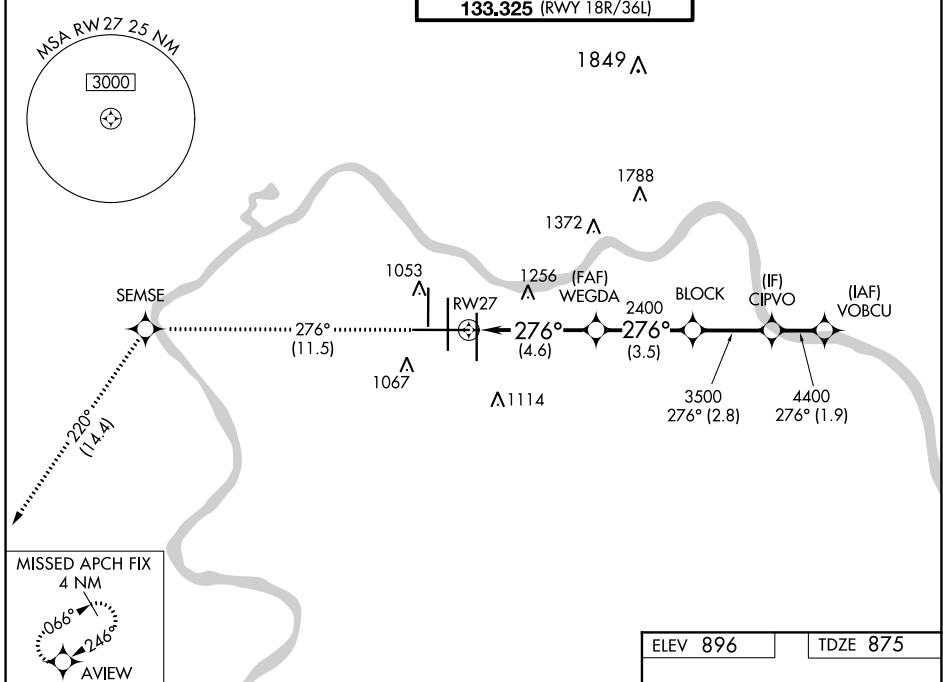


MISSED APPROACH: Climb to 3000 on track 276° SEMSE and on track 220° to AVIEW and hold.

D-ATIS	CINCINNATI APP CON
ARR 134.375 DEP 135.3	119.7 363.15 (090°-269°) 123.875 363.15 (270°-089°)

CINCINNATI TOWER
118.975 360.85 (RWY 18L/36R) 118.3 (RWYS 18C/36C, 09/27) 133.325 (RWY 18R/36L)

GND CON	CLNC DEL	CPDLC
121.7	127.175	



CATEGORY	A	B	C	D
RNP 0.15 DA		1296/40	421 (500-¾)	
RNP 0.23 DA		1378/55	503 (500-1)	
RNP 0.30 DA		1445-1¼	570 (600-1¼)	

AUTHORIZATION REQUIRED

HIRL all Rwys
TDZ/CL all Rwys except 27

SE-1, 22 FEB 2024 to 21 MAR 2024

SE-1, 22 FEB 2024 to 21 MAR 2024


APP CRS	Rwy Idg	11000
006°	TDZE	850
	Apt Elev	896

RNAV (RNP) Z RWY 36C

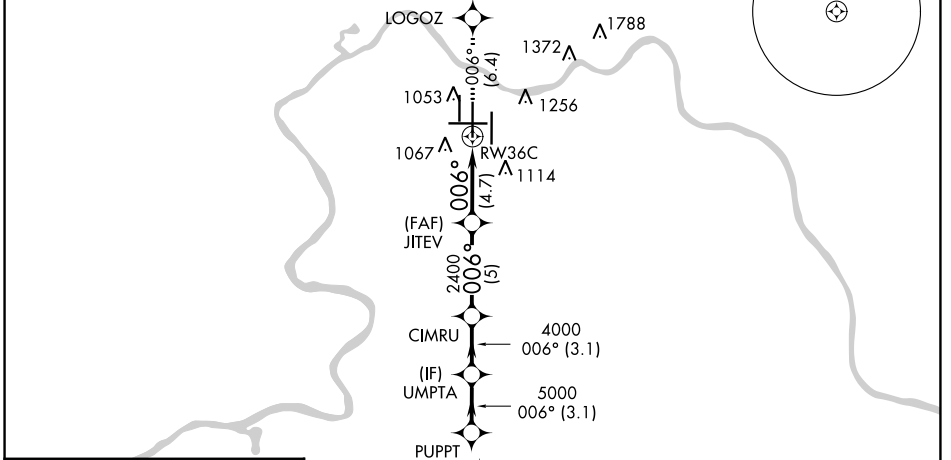
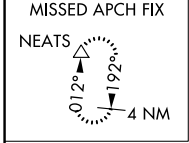
CINCINNATI/NORTHERN KENTUCKY INTL (CVG)

RNP AR APCH - GPS.

Simultaneous approach authorized. For uncompensated Baro-VNAV systems, procedure NA below -17°C or above 54°C. For inop ALS, increase RNP 0.30 visibility to 1% SM.

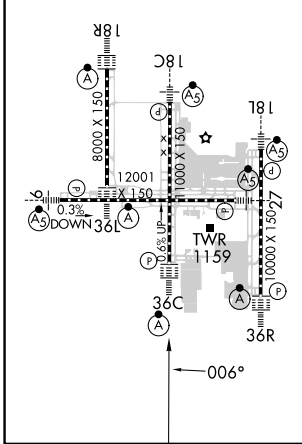
ALSF-2  MISSED APPROACH: Climb to 3000 on track 006° to LOGOZ and track 007° to NEATS and hold.

D-ATIS	CINCINNATI APP CON	CINCINNATI TOWER	GND CON	CLNC DEL	CPDLC
ARR 134.375 DEP 135.3	119.7 363.15 (090°-269°) 123.875 363.15 (270°-089°)	118.975 360.85 (RWY 18L/36R) 118.3 (RWYS 18C/36C, 09/27) 133.325 (RWY 18R/36L)	121.7	127.175	



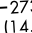
ELEV	896	TDZE	850
------	------------	------	------------

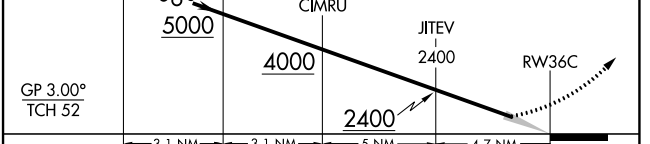
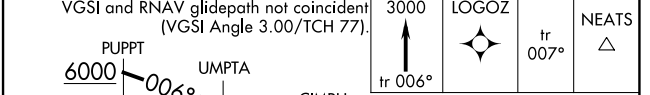
HIRL all Rwys
TDZ/CL all Rwys except 27



Procedure NA for arrivals at FLM VOR/DME on V517 southeast bound and V57 northbound.

Procedure NA for arrivals at DARKS on V97 southbound.

(IAF) DARKS  7000 273° (14.5) FALMOUTH FLM



GP 3.00° TCH 52	3.1 NM	3.1 NM	5 NM	4.7 NM
CATEGORY	A	B	C	D
RNP 0.30 DA	1318/50 468 (500-1)			

AUTHORIZATION REQUIRED

SE-1, 22 FEB 2024 to 21 MAR 2024

SE-1, 22 FEB 2024 to 21 MAR 2024

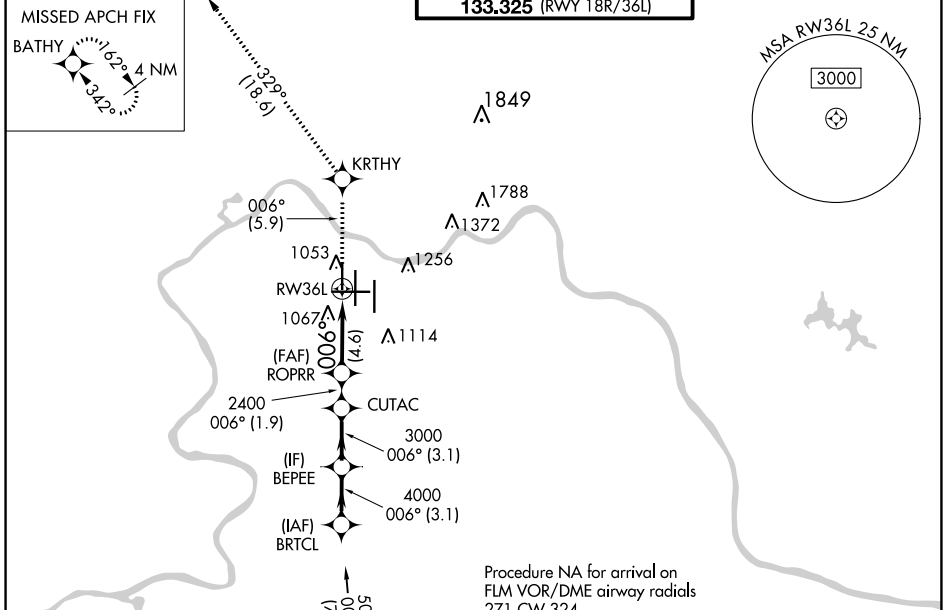
APP CRS	Rwy Idg	8000
006°	TDZE	873
	Apt Elev	896

RNAV (RNP) Z RWY 36L

CINCINNATI/NORTHERN KENTUCKY INTL (CVG)

RNP AR APCH - GPS.		ALSF-2	MISSED APPROACH: Climb to 3000 on track 006° to KRTHY and track 329° to BATHY and hold.	

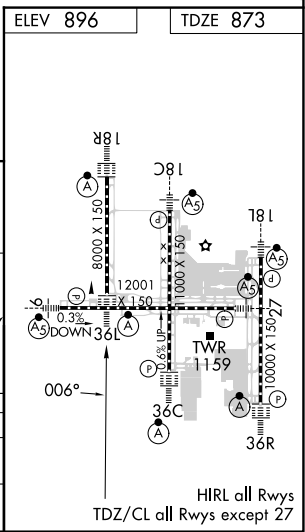
D-ATIS	CINCINNATI APP CON	CINCINNATI TOWER	GND CON	CLNC DEL	CPDLC
ARR DEP	119.7 363.15 (090°-269°)	118.975 360.85 (RWY 18L/36R)	121.7	127.175	
134.375 135.3	123.875 363.15 (270°-089°)	118.3 (RWYS 18C/36C, 09/27)			
		133.325 (RWY 18R/36L)			



SE-1, 22 FEB 2024 to 21 MAR 2024

SE-1, 22 FEB 2024 to 21 MAR 2024

ELEV 896		TDZE 873	
GP 3.00°	TCH 55		
CATEGORY	A	B	C
RNP 0.30 DA	1264/35 391 (400-5%)		
AUTHORIZATION REQUIRED			



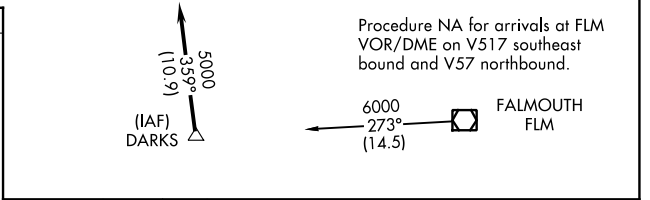
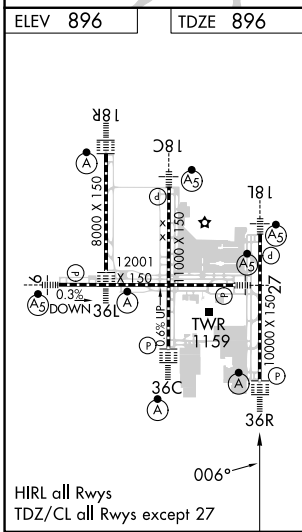
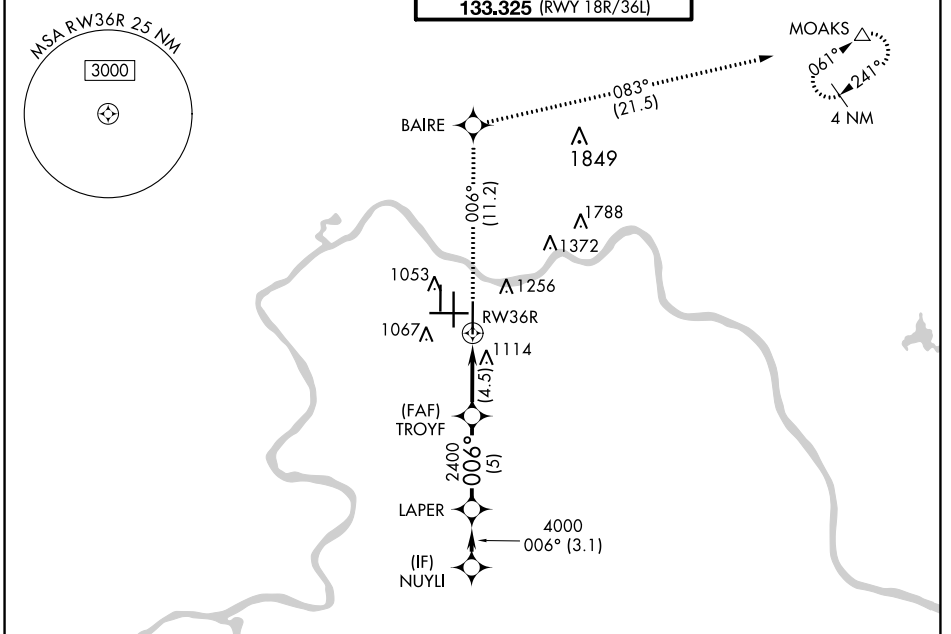
APP CRS	Rwy Idg	10000
006°	TDZE	896
	Apt Elev	896

RNAV (RNP) Z RWY 36R

CINCINNATI/NORTHERN KENTUCKY INTL (CVG)

RNP AR APCH - GPS.	ALSF-2	MISSED APPROACH: Climb to 3000 on track 006° to BAIRE and on track 083° to MOAKS and hold.
Simultaneous approach authorized. For uncompensated Baro-VNAV systems, procedure NA below -17°C or above 54°C.		

D-ATIS	CINCINNATI APP CON	CINCINNATI TOWER	GND CON	CLNC DEL	CPDLC
ARR 134.375 DEP 135.3	119.7 363.15 (090°-269°) 123.875 363.15 (270°-089°)	118.975 360.85 (RWY 18L/36R) 118.3 (RWYS 18C/36C, 09/27) 133.325 (RWY 18R/36L)	121.7	127.175	



3000	↑ tr 006°	BAIRE	↑ tr 083°	MOAKS	VGSI and RNAV glidepath not coincident (VGSI Angle 3.00/TCH 70). NUYLI
					LAPER
					5000
					006°
					4000
					2400
					2400
					4.5 NM
					5 NM
					3.1 NM
CATEGORY	A	B	C	D	
RNP 0.30 DA		1329/40	433 (500-¾)		
AUTHORIZATION REQUIRED					

SE-1, 22 FEB 2024 to 21 MAR 2024

SE-1, 22 FEB 2024 to 21 MAR 2024

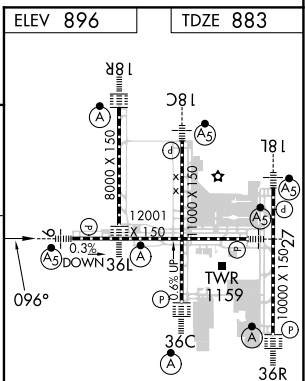
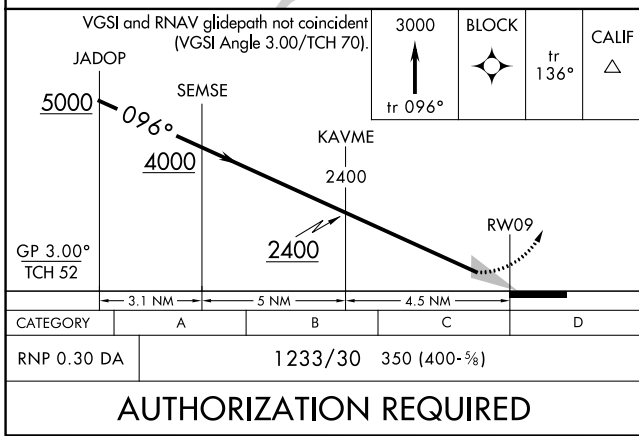
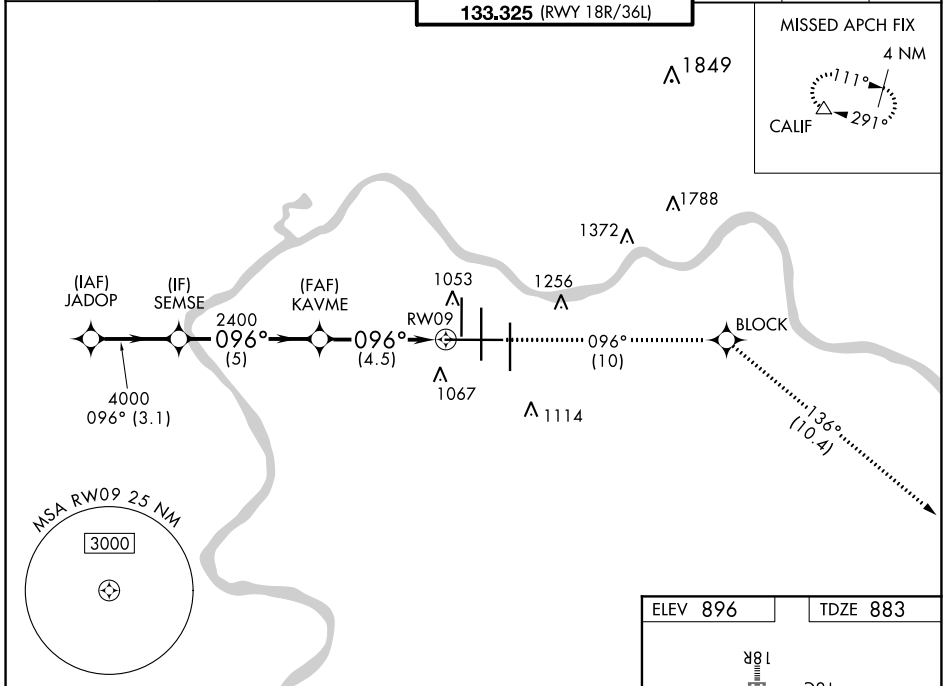
APP CRS	Rwy Idg	12001
096°	TDZE	883
	Apt Elev	896

RNAV (RNP) Z RWY 9

CINCINNATI/NORTHERN KENTUCKY INTL (CVG)

RNP AR APCH - GPS.		MALSR	MISSED APPROACH: Climb to 3000 on track 096° to BLOCK and track 136° to CALIF and hold.
For uncompensated Baro-VNAV systems, procedure NA below -17°C or above 54°C. For inop ALS, increase RNP 0.30 visibility to RVR 5500.			

D-ATIS	CINCINNATI APP CON	CINCINNATI TOWER	GND CON	CLNC DEL	CPDLC
ARR 134.375 DEP 135.3	119.7 363.15 (090°-269°) 123.875 363.15 (270°-089°)	118.975 360.85 (RWY 18L/36R) 118.3 (RWYS 18C/36C, 09/27) 133.325 (RWY 18R/36L)	121.7	127.175	



COVINGTON, KENTUCKY
Orig-B 24MAR22

CINCINNATI/NORTHERN KENTUCKY INTL (CVG)
39°03'N-84°40'W

RNAV (RNP) Z RWY 9

SE-1, 22 FEB 2024 to 21 MAR 2024

SE-1, 22 FEB 2024 to 21 MAR 2024

AUTHORIZATION REQUIRED

HIRL all Rwys
TDZ/CL all Rwys except 27

WAAS CH 86803 W18B	APP CRS 186°	Rwy Idg 11000 TDZE 875 Apt Elev 896
--	------------------------	--

RNAV (GPS) Y RWY 18C

CINCINNATI/NORTHERN KENTUCKY INTL (CVG)

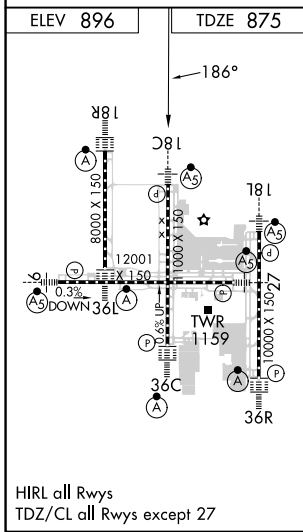
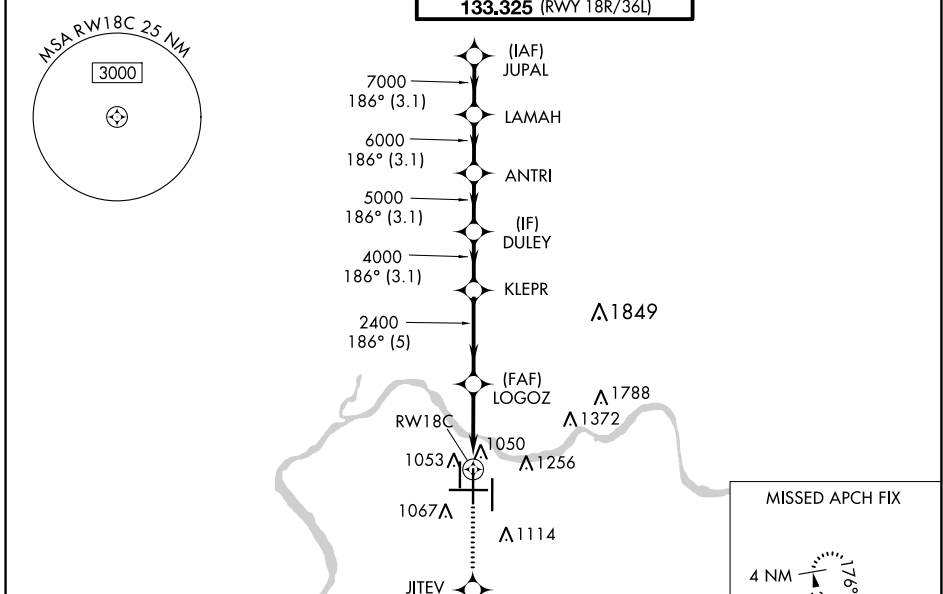
RADAR required for procedure entry. RNP APCH - GPS.

▼ For uncompensated Baro-VNAV systems, LNAV/VNAV NA below -17°C or above 54°C. Simultaneous approach authorized with Rwy 18 L/R. LNAV procedure NA during simultaneous operations. Use of FD or AP required during simultaneous operations. For inop ALS, increase LNAV Cat C/D visibility to 1 3/8 SM.



MISSED APPROACH:
Climb to 3000 direct
JITEV and on 181° track
to ZIRKE and hold.

D-ATIS ARR 134.375 DEP 135.3	CINCINNATI APP CON 119.7 363.15 (090°-269°) 123.875 363.15 (270°-089°)	CINCINNATI TOWER 118.975 360.85 (RWY 18L/36R) 118.3 (RWYS 18C/36C, 09/27) 133.325 (RWY 18R/36L)	GND CON 121.7	CLNC DEL 127.175	CPDLC
---	--	---	-------------------------	----------------------------	-------



ELEV 896	TDZE 875			
3000	JITEV	ZIRKE	VGSi and RNAV glidepath not coincident (VGSi Angle 3.00/TCH 71).	
↑	181°	△	LAMAH	JUPAL
			8000	
			DULEY	ANTRI
			6000	7000
			LOGOZ	KLEPR
			2400	4000
			1.4 NM to RW18C	5000
			2400	6000
			2400	7000
			GP 3.00°	TCH 55°
			1.4	3.2 NM
			5 NM	3.1 NM
			3.1 NM	3.1 NM
			3.1 NM	3.1 NM
CATEGORY	A	B	C	D
LPV DA	1075/18		200 (200-1/2)	
LNAV/VNAV DA	1398/55		523 (600-1)	
LNAV MDA	1360/24	485 (500-1/2)	1360/50	485 (500-1)
CIRCLING	1460-1	564 (600-1)	1560-1 3/4 664 (700-1 3/4)	1560-2 664 (700-2)

SE-1, 22 FEB 2024 to 21 MAR 2024

SE-1, 22 FEB 2024 to 21 MAR 2024

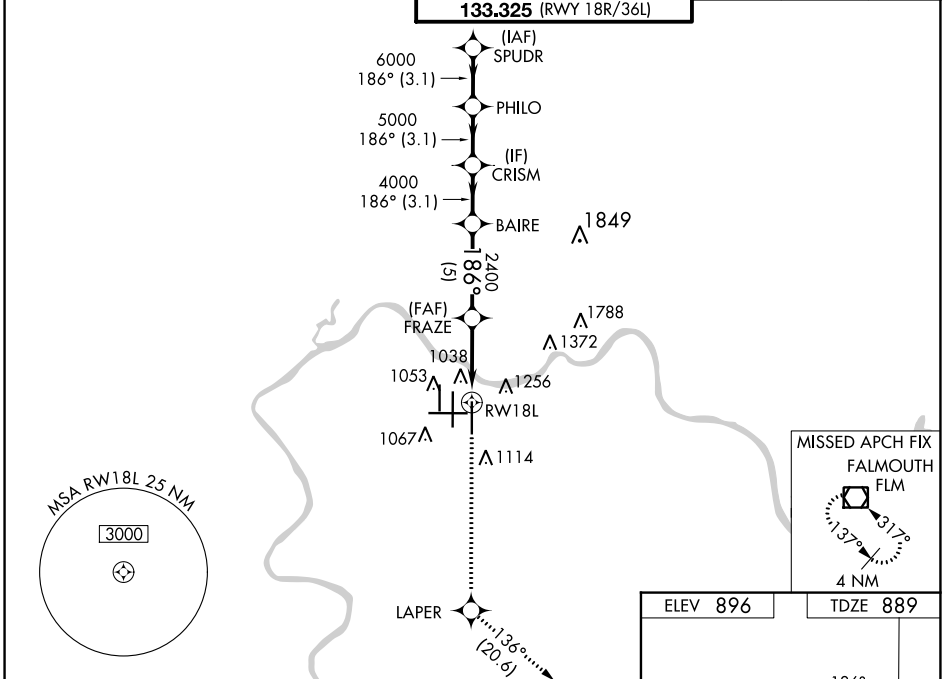
WAAS CH 40103 W18A	APP CRS 186°	Rwy Idg 10000 TDZE 889 Apt Elev 896
--	------------------------	--

RNAV (GPS) Y RWY 18L

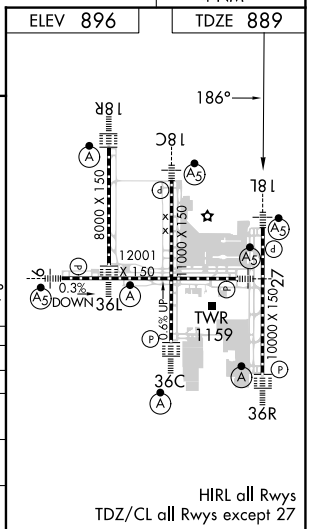
CINCINNATI/NORTHERN KENTUCKY INTL (CVG)

RADAR required for procedure entry. RNP APCH - GPS.		MALSR 	MISSED APPROACH: Climb to 3000 direct LAPER and on track 136° to FLM VOR/DME and hold.
For uncompensated Baro-VNAV systems, LNAV/VNAV NA below -17°C or above 54°C. Simultaneous approach authorized with Rwy 18C/R. LNAV procedure NA during simultaneous operations. Use of FD or AP required during simultaneous operations. For inop ALS, increase LNAV/VNAV all Cats and LNAV Cat C/D visibility to 1 3/8 SM.			

D-ATIS ARR 134.375 DEP 135.3	CINCINNATI APP CON 119.7 363.15 (090°-269°) 123.875 363.15 (270°-089°)	CINCINNATI TOWER 118.975 360.85 (RWY 18L/36R) 118.3 (RWYS 18C/36C, 09/27) 133.325 (RWY 18R/36L)	GN D CON 121.7	CLNC DEL 127.175	CPDLC
---	--	---	--------------------------	----------------------------	-------



3000	LAPER	FLM	VGSI and RNAV glidepath not coincident (VGSI Angle 3.00/TCH 71).
↑			
	tr 136°		
	1.3 NM to RWY 18R	FRAZE 2400	BAIRE 4000
	RWY 18L		PHILO 5000
			SPUDR 6000
			7000
	1.3 NM	3.3 NM	5 NM
			3.1 NM
			3.1 NM
			3.1 NM
GP 3.00° TCH 55			
CATEGORY	A	B	C
LPV DA		1089/18	200 (200-1/2)
LNAV/VNAV DA		1395/55	506 (500-1)
LNAV MDA	1360/24	471 (500-1/2)	1360/50 471 (500-1)
CIRCLING	1460-1 564 (600-1)	1560-1 3/4 664 (700-1 3/4)	1560-2 664 (700-2)



SE-1, 22 FEB 2024 to 21 MAR 2024

SE-1, 22 FEB 2024 to 21 MAR 2024

HIRL all Rwy's
TDZ/CL all Rwy's except 27

WAAS CH 58099 W18D	APP CRS 186°	Rwy Idg 8000 TDZE 868 Apt Elev 896
--	------------------------	---

RNAV (GPS) Y RWY 18R

CINCINNATI/NORTHERN KENTUCKY INTL (CVG)

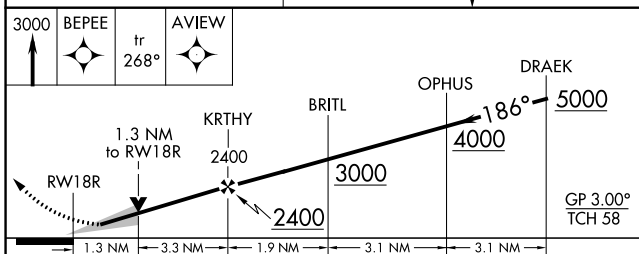
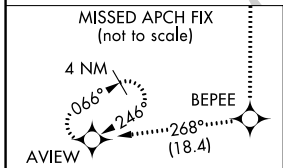
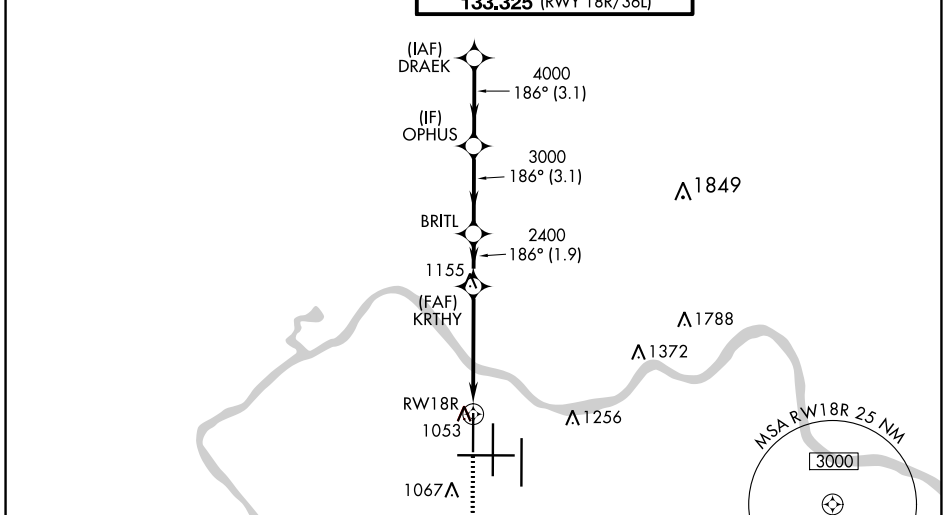
RADAR required for procedure entry. RNP APCH - GPS.

▼ For uncompensated Baro-VNAV systems, LNAV/VNAV NA below -17°C or above 54°C. Simultaneous approach authorized with Rwy 18L/C. LNAV procedure NA during simultaneous operations. Use of FD or AP required during simultaneous operations.

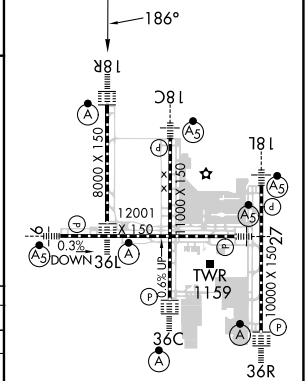


MISSED APPROACH: Climb to 3000 direct BEPEE and on 268° track to AVIEW and hold.

D-ATIS ARR 134.375 DEP 135.3	CINCINNATI APP CON 119.7 363.15 (090°-269°) 123.875 363.15 (270°-089°)	CINCINNATI TOWER 118.975 360.85 (RWY 18L/36R) 118.3 (RWYS 18C/36C, 09/27) 133.325 (RWY 18R/36L)	GND CON 121.7	CLNC DEL 127.175	CPDLC
---	--	---	-------------------------	----------------------------	-------



ELEV 896	TDZE 868
----------	----------



CATEGORY	A	B	C	D
LPV DA		1068/18	200 (200-½)	
LNAV/VNAV DA		1321/45	453 (500-¾)	
LNAV MDA	1320/24	452 (500-½)	1320/45	452 (500-¾)
C CIRCLING	1460-1	564 (600-1)	1560-1¾ 664 (700-1¾)	1560-2 664 (700-2)

HIRL all Rwys
TDZ/CL all Rwys except 27

SE-1, 22 FEB 2024 to 21 MAR 2024

SE-1, 22 FEB 2024 to 21 MAR 2024

WAAS CH 86809 W27A	APP CRS 276°	Rwy Idg 12001 TDZE 875 Apt Elev 896
--	------------------------	--

RNAV (GPS) Y RWY 27

CINCINNATI/NORTHERN KENTUCKY INTL (CVG)

RNP APCH-GPS.

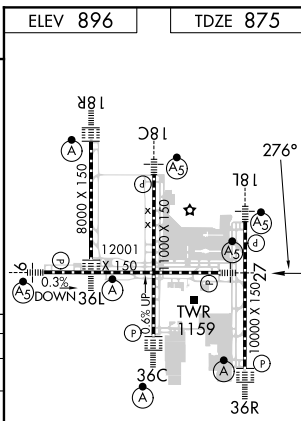
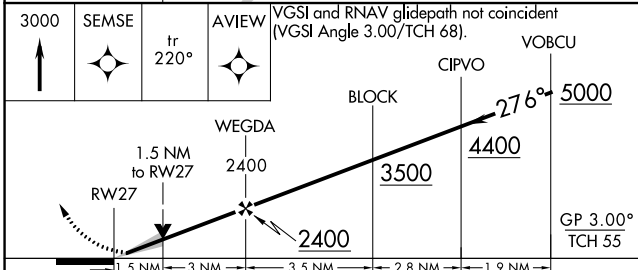
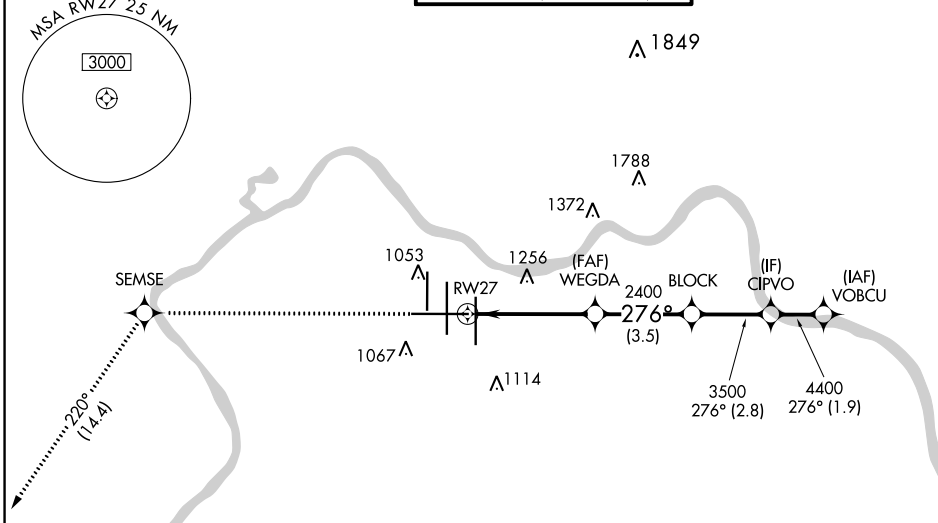
▼ For uncompensated Baro-VNAV systems, LNAV/VNAV NA below -16° C or above 54° C. For inop ALS, increase LNAV/VNAV all Cts visibility to 1 3/8 SM.
**RVR 1800 authorized with use of FD or AP or HUD to DA.

MALSR



MISSED APPROACH: Climb to 3000 direct SEMSE then on track 220° to AVIEW and hold.

D-ATIS ARR 134.375 DEP 135.3	CINCINNATI APP CON 119.7 363.15 (090°-269°) 123.875 363.15 (270°-089°)	CINCINNATI TOWER 118.975 360.85 (RWY 18L/36R) 118.3 (RWYS 18C/36C, 09/27) 133.325 (RWY 18R/36L)	GND CON 121.7	CLNC DEL 127.175	CPDLC
---	--	---	-------------------------	----------------------------	-------



CATEGORY	A	B	C	D
LPV DA **		1075/24	200 (200-1/2)	
LNAV/VNAV DA		1349/50	474 (500-1)	
LNAV MDA	1420/24	545 (600-1/2)	1420/60	545 (600-1/4)
CIRCLING	1460-1	564 (600-1)	1560-1 3/4 664 (700-1 3/4)	1560-2 664 (700-2)

HIRL all Rwys
TDZ/CL all Rwys except 27

SE-1, 22 FEB 2024 to 21 MAR 2024

SE-1, 22 FEB 2024 to 21 MAR 2024

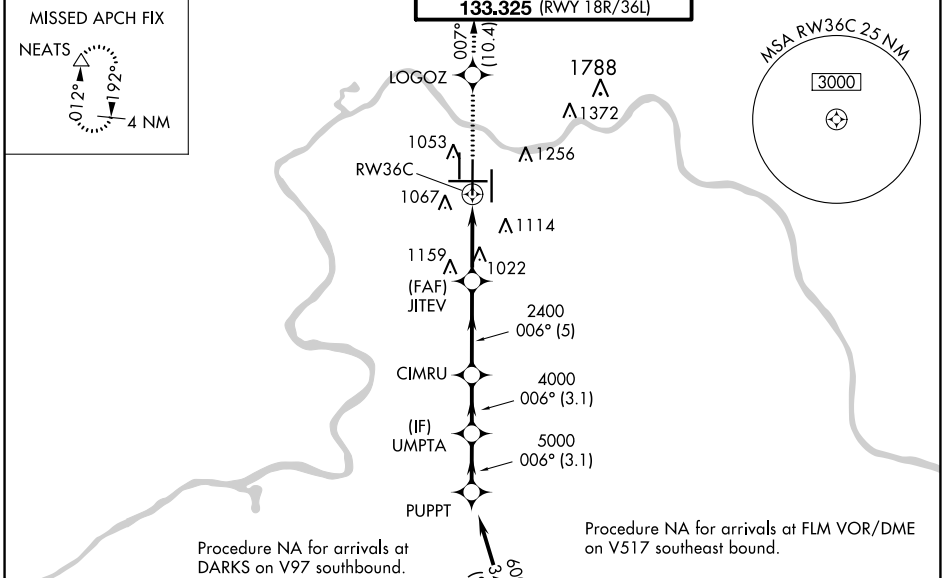
WAAS CH 97609 W36B	APP CRS 006°	Rwy Idg 11000 TDZE 850 Apt Elev 896
--	------------------------	--

RNAV (GPS) Y RWY 36C

CINCINNATI/NORTHERN KENTUCKY INTL (CVG)

RNP APCH - GPS.		ALS-F2 	MISSED APPROACH: Climb to 3000 direct LOGOZ and on track 007° to NEATS and hold.	
<p>▼ For uncompensated Baro-VNAV systems, LNAV/VNAV NA below -16°C or above 54°C. Simultaneous approach authorized with Rwy 36L/R. LNAV procedure NA during simultaneous operations. Use of FD or AP providing RNAV track guidance required during simultaneous operations.</p>				

D-ATIS ARR 134.375 DEP 135.3	CINCINNATI APP CON 119.7 363.15 (090°-269°) 123.875 363.15 (270°-089°)	CINCINNATI TOWER 118.975 360.85 (RWY 18L/36R) 118.3 (RWYS 18C/36C, 09/27) 133.325 (RWY 18R/36L)	GND CON 121.7	CLNC DEL 127.175	CPDLC
---	--	---	-------------------------	----------------------------	-------



ELEV 896	TDZE 850	7000 273° (14.5)		FALMOUTH FLM
----------	----------	------------------------	--	-----------------

3000	LOGOZ	tr 007°	NEATS	VGSI and RNAV glidepath not coincident (VGSI Angle 3.00/TCH 77).	
RW36C		JITEV 2400	CIMRU 4000	UMPTA 5000	PUPPT 6000
1.5 NM		1.5 NM to RW36C	3.2 NM	5 NM	3.1 NM
CATEGORY		A	B	C	D
LPV DA		1050/18		200 (200-1/2)	
LNAV/VNAV DA		1346/50		496 (500-1)	
LNAV MDA		1400/24		1400/60	
		550 (600-1/2)		549 (600-1 1/4)	
		1460-1		564 (600-1)	
		664 (700-1 3/4)		1560-2	
		664 (700-2)		664 (700-2)	

SE-1, 22 FEB 2024 to 21 MAR 2024

SE-1, 22 FEB 2024 to 21 MAR 2024

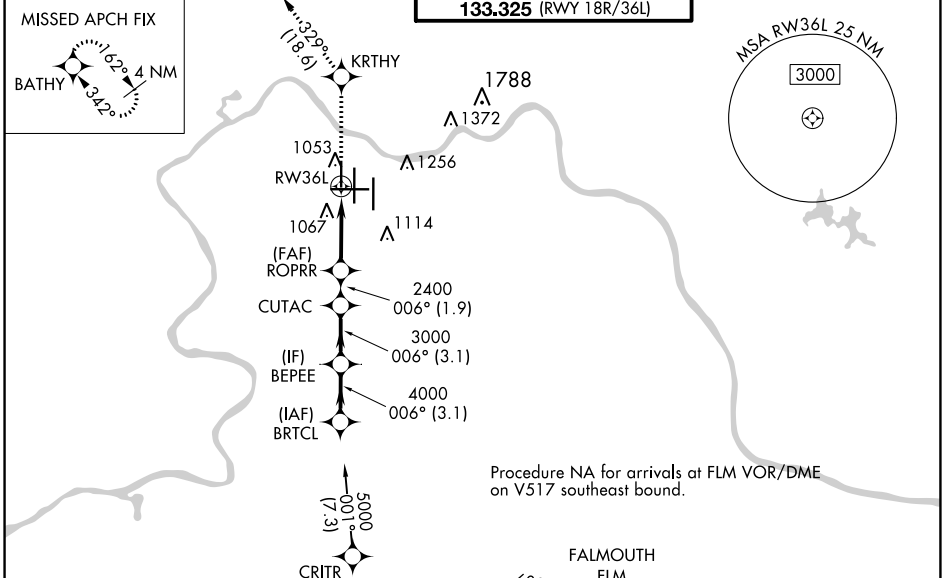
WAAS CH 49099 W36A	APP CRS 006°	Rwy Idg TDZE Apt Elev	8000 873 896
--	------------------------	-----------------------------	---

RNAV (GPS) Y RWY 36L

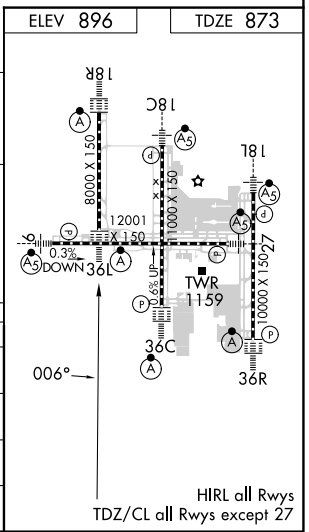
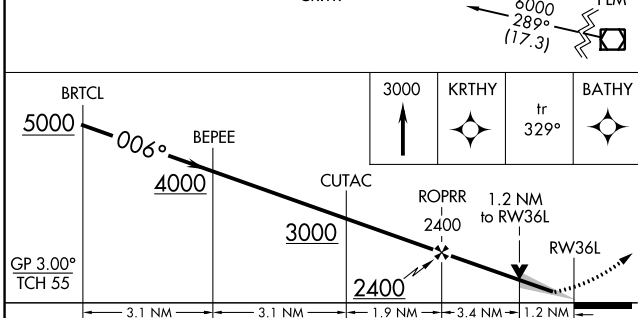
CINCINNATI/NORTHERN KENTUCKY INTL (CVG)

RNP APCH - GPS.	ALSF-2	MISSED APPROACH: Climb to 3000 direct KRTHY and on 329° track to BATHY and hold.
▼ For uncompensated Baro-VNAV systems, LNAV/VNAV NA below -16°C or above 54°C. Simultaneous approach authorized with Rwy 36C/R. LNAV procedure NA during simultaneous operations. Use of FD or AP providing RNAV track guidance required during simultaneous operations.		

D-ATIS ARR 134.375 DEP 135.3	CINCINNATI APP CON 119.7 363.15 (090°-269°) 123.875 363.15 (270°-089°)	CINCINNATI TOWER 118.975 360.85 (RWY 18L/36R) 118.3 (RWYS 18C/36C, 09/27) 133.325 (RWY 18R/36L)	GND CON 121.7	CLNC DEL 127.175	CPDLC
---	--	---	-------------------------	----------------------------	-------



Procedure NA for arrivals at FLM VOR/DME on V517 southeast bound.



CATEGORY	A	B	C	D
LPV DA		1073/18	200 (200-½)	
LNAV/VNAV DA		1383/55	510 (500-1)	
LNAV MDA	1300/24	427 (500-½)	1300/40	427 (500-¾)
CIRCLING	1460-1	564 (600-1)	1560-1¾ 664 (700-1¾)	1560-2 664 (700-2)

SE-1, 22 FEB 2024 to 21 MAR 2024

SE-1, 22 FEB 2024 to 21 MAR 2024

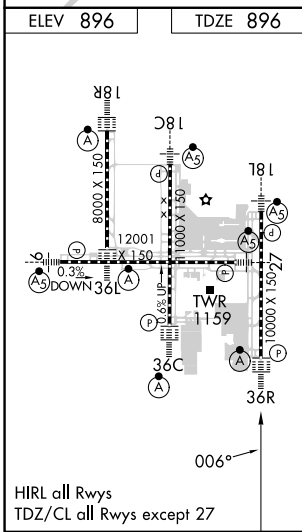
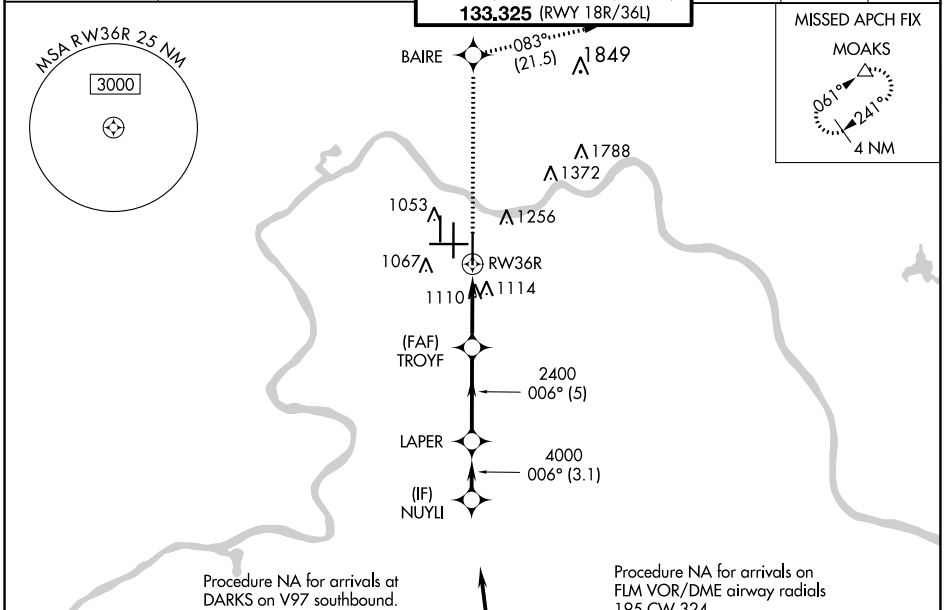
WAAS CH 42709	APP CRS 006°	Rwy Idg 10000
W36D		TDZE 896
		Apt Elev 896

RNAV (GPS) Y RWY 36R

CINCINNATI/NORTHERN KENTUCKY INTL (CVG)

RNP APCH - GPS.	ALSF-2 	MISSED APPROACH: Climb to 3000 direct BAIRE and on 083° track to MOAKS and hold.
▼ For uncompensated Baro-VNAV systems, LNAV/VNAV NA below -16°C or above 54°C. Simultaneous approach authorized with Rwy 36L/C. LNAV procedure NA during simultaneous operations. Use of FD or AP providing RNAV track guidance required during simultaneous operations.		

D-ATIS ARR 134.375 DEP 135.3	CINCINNATI APP CON 119.7 363.15 (090°-269°)	CINCINNATI TOWER 118.975 360.85 (RWY 18L/36R) 118.3 (RWYS 18C/36C, 09/27) 133.325 (RWY 18R/36L)	GND CON 121.7	CLNC DEL 127.175	CPDLC
---	---	---	-------------------------	----------------------------	-------



ELEV 896	TDZE 896	Procedure NA for arrivals on FLM VOR/DME airway radials 195 CW 324.			
(IAF) DANKS 5000 (10.9) 350°		FALMOUTH FLM 6000 273° (14.5)			
3000	BAIRE	MOAKS	VGSi and RNAV glidepath not coincident (VGSi Angle 3.00/TCH 70). LAPER NUYLI		
↑ 083°		TROYF 2400 006° 5000			
1.2 NM to RWY36R		2400 4000			
RWY36R		GP 3.00° TCH 55			
1.2 3.3 5 3.1		A B C D			
CATEGORY	LPV DA	1096/18 200 (200-½)			
LNAV/VNAV DA	1340/45 444 (500-¾)				
LNAV MDA	1360/24 464 (500-½)		1360/50 464 (500-1)		
CIRCLING	1460-1 564 (600-1)		1560-1¾ 664 (700-1¾)		1560-2 664 (700-2)

SE-1, 22 FEB 2024 to 21 MAR 2024

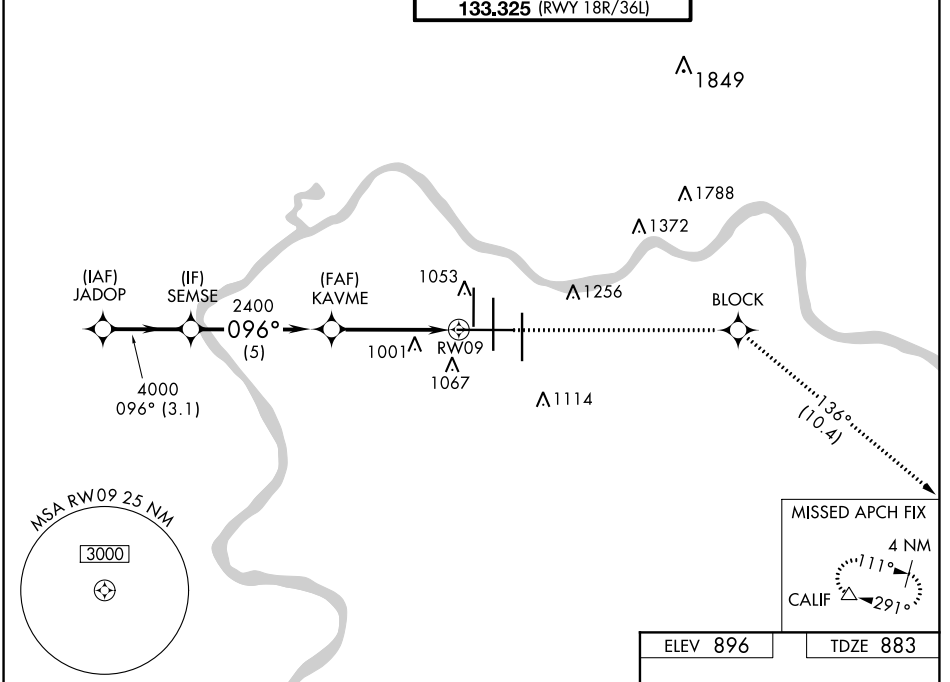
SE-1, 22 FEB 2024 to 21 MAR 2024

WAAS CH 65709 W09A	APP CRS 096°	Rwy Idg 12001 TDZE 883 Apt Elev 896
--	------------------------	--

RNAV (GPS) Y RWY 9

CINCINNATI/NORTHERN KENTUCKY INTL (CVG)

RNP APCH - GPS.		MALSR	MISSED APPROACH: Climb to 3000 direct BLOCK and on track 136° to CALIF and hold.		
▼ For uncompensated Baro-VNAV systems, LNAV/VNAV NA below -16° C or above 54° C. For inop ALS, increase LNAV/VNAV all Cats visibility to RVR 6000 and LNAV Cat C/D visibility to RVR 5500.					
D-ATIS ARR 134.375 DEP 135.3	CINCINNATI APP CON 119.7 363.15 (090°-269°) 123.875 363.15 (270°-089°)	CINCINNATI TOWER 118.975 360.85 (RWY 18L/36R) 118.3 (RWYS 18C/36C, 09/27) 133.325 (RWY 18R/36L)	GND CON 121.7	CLNC DEL 127.175	CPDLC

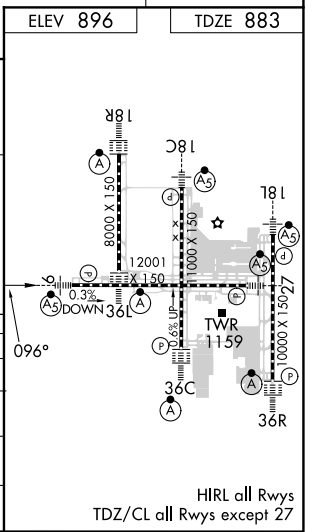


SE-1, 22 FEB 2024 to 21 MAR 2024

SE-1, 22 FEB 2024 to 21 MAR 2024

VGSI and RNAV glidepath not coincident (VGSI Angle 3.00/TCH 70).

JADOP	SEMSE	KAVME	1 NM to RWY09	RWY09	CALIF
5000	4000	2400			
GP 3.00° TCH 52					
3.1 NM	5 NM	3.6 NM	1 NM		
CATEGORY	A	B	C	D	
LPV DA		1083/18	200 (200-½)		
LNAV/VNAV DA		1297/40	414 (500-¾)		
LNAV MDA	1260/24	377 (400-½)	1260/35	377 (400-⅝)	
CIRCLING	1460-1	564 (600-1)	1560-1¾ 664 (700-1¾)	1560-2 664 (700-2)	



HIRL all Rwy's
TDZ/CL all Rwy's except 27