

WAAS CH 97342 W18A	APP CRS 175°	Rwy Idg TDZE Apt Elev	4986 916 925
--	------------------------	-----------------------------	---

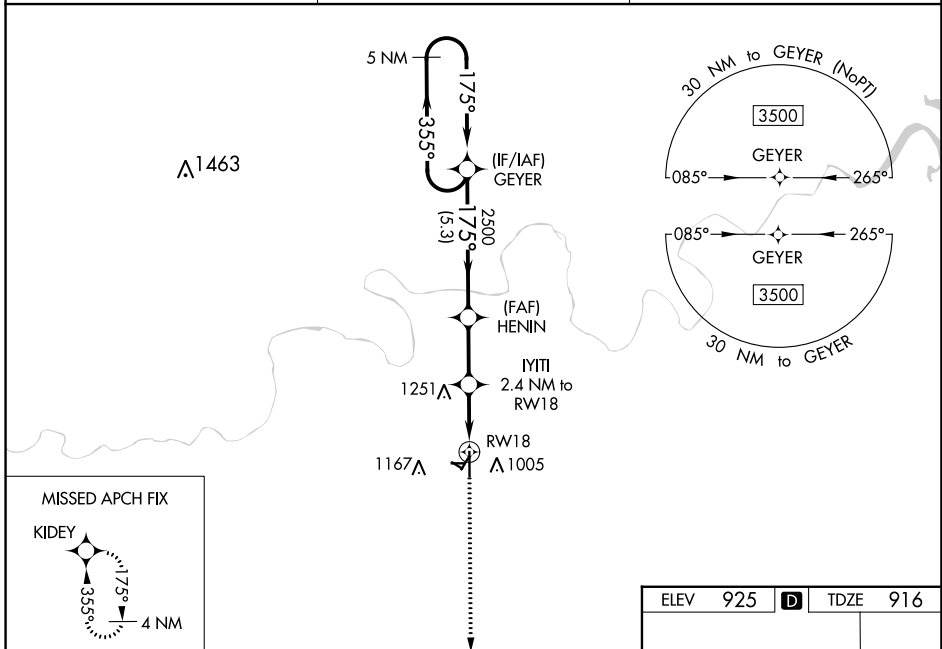
RNAV (GPS) RWY 18

CUSHING MUNI (CUH)

▽ Circling NA to Rwy 8 and 26. Baro-VNAV NA when using Chandler altimeter setting.
▲ For uncompensated Baro-VNAV systems, LNAV/VNAV NA below -16°C (4°F) or above 54°C (130°F).
 Rwy 18 helicopter visibility reduction below ¾ NA. DME/DME RNP-0.3 NA.
 When local altimeter setting not received, use Chandler altimeter setting and increase all DA 41 feet and all visibilities ½ SM. Increase all MDA 60 feet and LNAV Cat C and D visibilities ½ SM
 Circling NA to Rwys 2, 8, 11, 20, 26, 29

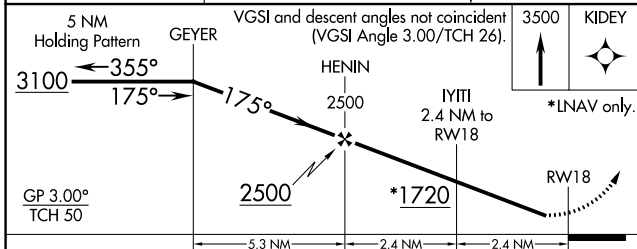
MISSED APPROACH:
 Climb to 3500 direct KIDEY and hold.

AWOS-3PT 118.25	KANSAS CITY CENTER 127.8 319.1	UNICOM 122.8 (CTAF)
---------------------------	--	-------------------------------



SC-1, 22 FEB 2024 to 21 MAR 2024

SC-1, 22 FEB 2024 to 21 MAR 2024



ELEV	925	D	TDZE	916
------	-----	----------	------	-----

Detailed diagram of the runway layout for RWY 18. Key features include:

- 0.9% UP (2700 X 40)
- 81 ft elevation
- 36 ft elevation
- 5201 X 100 ft elevation
- 0.7% UP
- 0.3% UP
- 1.4% UP

CATEGORY	A	B	C	D
LPV DA		1166-¾	250 (300-¾)	
LNAV/VNAV DA		1357-1½	441 (500-1½)	
LNAV MDA	1400-1	484 (500-1)	1400-1¾	484 (500-1¾)
C CIRCLING	1600-1	675 (700-1)	1600-2	1600-2¼
			675 (700-2)	675 (700-2¼)

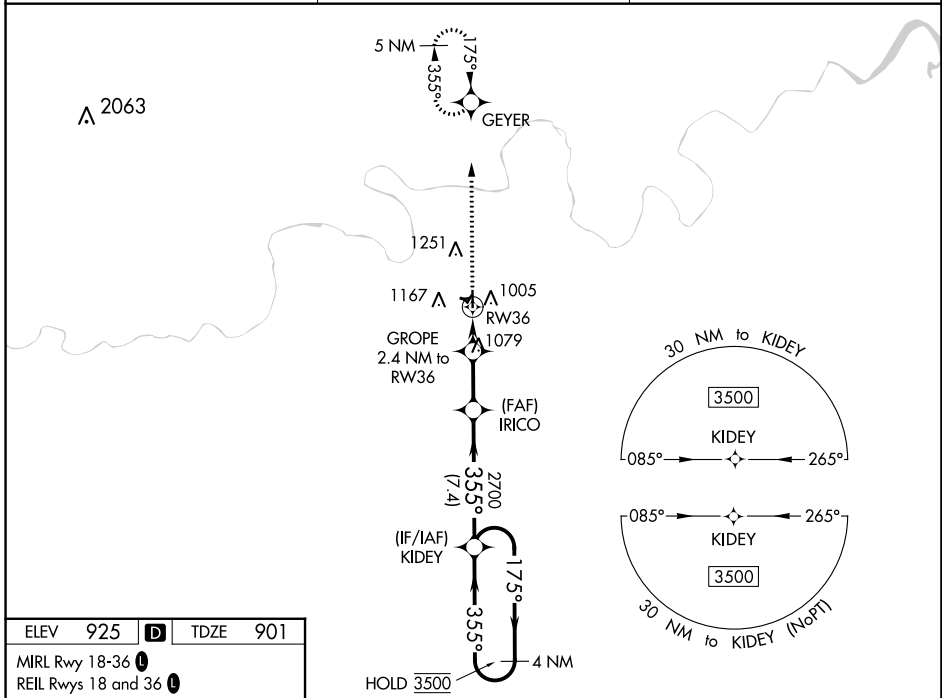
MIRL Rwy 18-36 **①**
 REIL Rwys 18 and 36 **①**

WAAS CH 90142 W36A	APP CRS 355°	Rwy Idg TDZE Apt Elev	4986 901 925
--	------------------------	-----------------------------	---

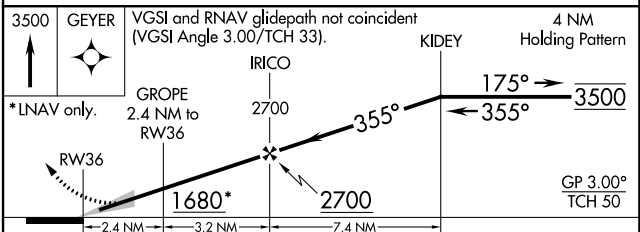
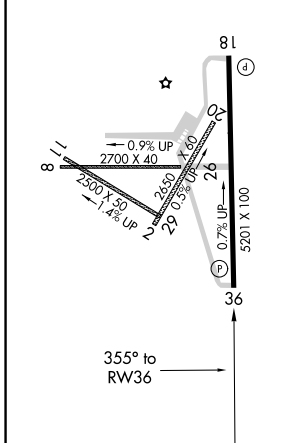
RNAV (GPS) RWY 36

CUSHING MUNI (CUH)

RNP APCH. ⚠ For uncompensated Baro-VNAV systems, LNAV/VNAV NA below -16°C or above 54°C. Circling NA to Rwy's 2, 8, 11, 20, 26, and 29.		MISSED APPROACH: Climb to 3500 direct GEYER and hold, continue to climb-in-hold to 3500.
AWOS-3PT 118.25	KANSAS CITY CENTER 127.8 319.1	UNICOM 122.8 (CTAF)



ELEV 925	D	TDZE 901
MIRL Rwy 18-36		
REIL Rwy's 18 and 36		



CATEGORY	A	B	C	D
LPV DA	1151-7/8		250 (300-7/8)	
LNAV/VNAV DA	1284-1 1/4		383 (400-1 1/4)	
LNAV MDA	1340-1	439 (500-1)	1340-1 1/4	439 (500-1 1/4)
CIRCLING	1600-1	675 (700-1)	1600-2 675 (700-2)	1600-2 1/4 675 (700-2 1/4)

SC-1, 22 FEB 2024 to 21 MAR 2024

SC-1, 22 FEB 2024 to 21 MAR 2024