

RNAV (GPS) RWY 15

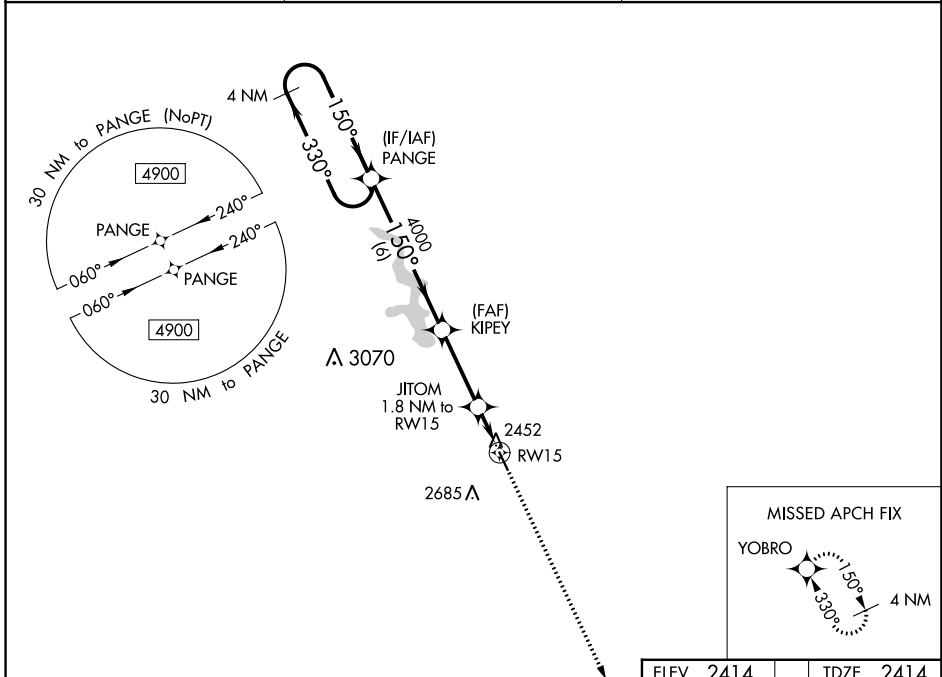
CAMBRIDGE MUNI (CSB)

WAAS CH 45938 W15A	APP CRS 150°	Rwy Idg TDZE Apt Elev	4098 2414 2414
--	------------------------	-----------------------------	---

NA Baro-VNAV NA. DME/DME RNP-0.3 NA. Use Mc Cook altimeter setting when not received, use Lexington altimeter setting and increase LPV and LNAV/VNAV DA to 2743, increase all MDA 20 feet.

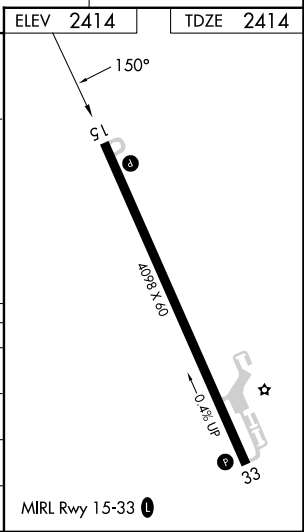
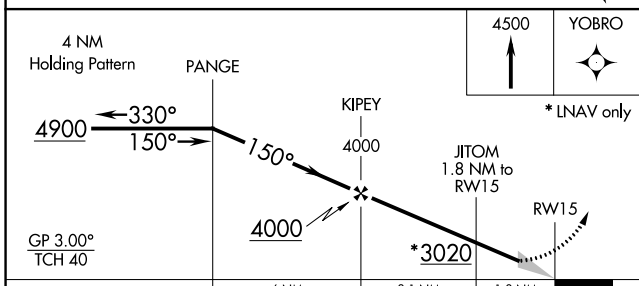
MISSED APPROACH: Climb to 4500 direct YOBRO and hold.

AWOS-3PT 118.375	DENVER CENTER 132.7 226.675	UNICOM 122.8 (CTAF) 0
----------------------------	---------------------------------------	---------------------------------



NC-2, 22 FEB 2024 to 21 MAR 2024

NC-2, 22 FEB 2024 to 21 MAR 2024



CATEGORY	A	B	C	D
LPV DA	2736-1 1/8	322 (400-1 1/8)		NA
LNAV/VNAV DA	2736-1 1/8	322 (400-1 1/8)		NA
LNAV MDA	2780-1	366 (400-1)		NA
C CIRCLING	2920-1 506 (600-1)	3120-1 706 (800-1)	3120-2 706 (800-2)	NA

WAAS CH 97738 W33A	APP CRS 330°	Rwy Idg TDZE Apt Elev	4098 2414 2414
--	------------------------	-----------------------------	---

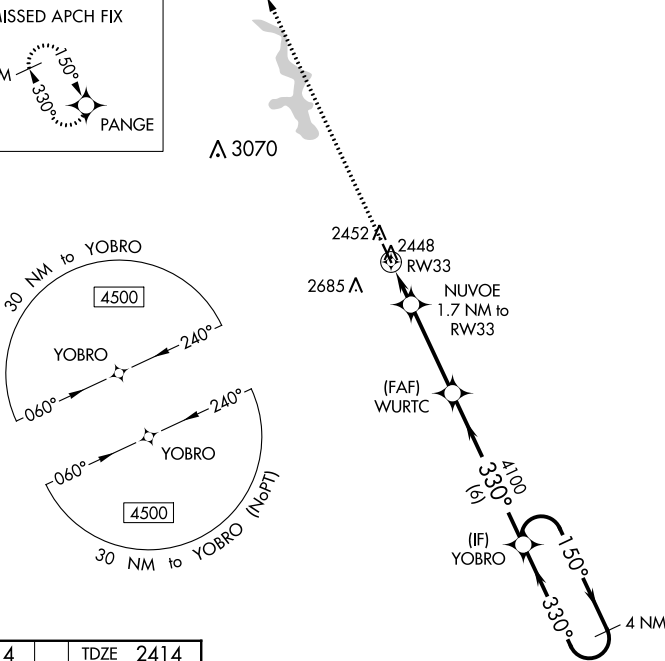
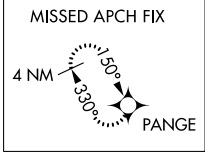
RNAV (GPS) RWY 33

CAMBRIDGE MUNI (CSB)

▼ Baro-VNAV NA. DME/DME RNP-0.3 NA. Helicopter visibility reduction below 3/4 SM NA.
▲ NA Use Mc Cook altimeter setting when not received, use Lexington altimeter setting and increase all LPV and LNAV/VNAV DA to 2743, increase all MDA 20 feet and Circling Cat C visibility 1/8 mile.

MISSED APPROACH:
Climb to 4900 direct PANGE and hold.

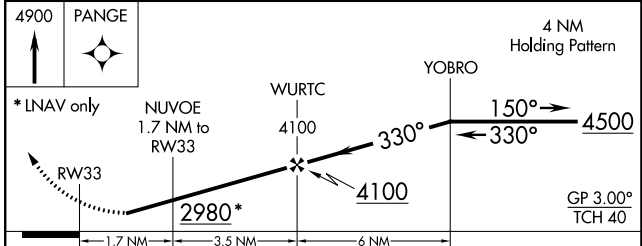
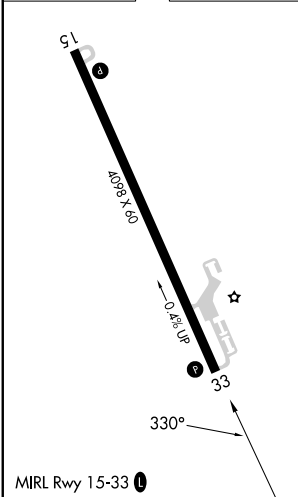
AWOS-3PT 118.375	DENVER CENTER 132.7 226.675	UNICOM 122.8 (CTAF) 0
----------------------------	---------------------------------------	---------------------------------



NC-2, 22 FEB 2024 to 21 MAR 2024

NC-2, 22 FEB 2024 to 21 MAR 2024

ELEV 2414	TDZE 2414
------------------	------------------



CATEGORY	A	B	C	D
LPV DA	2736-1 1/8	322 (400-1 1/8)		NA
LNAV/VNAV DA	2736-1 1/8	322 (400-1 1/8)		NA
LNAV MDA	2780-1 366 (400-1)			NA
C CIRCLING	2920-1 506 (600-1)	3120-1 706 (800-1)	3120-2 706 (800-2)	NA