

WAAS CH 82134 W26A	APP CRS 258°	Rwy Idg TDZE Apt Elev	5000 209 239
--	------------------------	-----------------------------	---

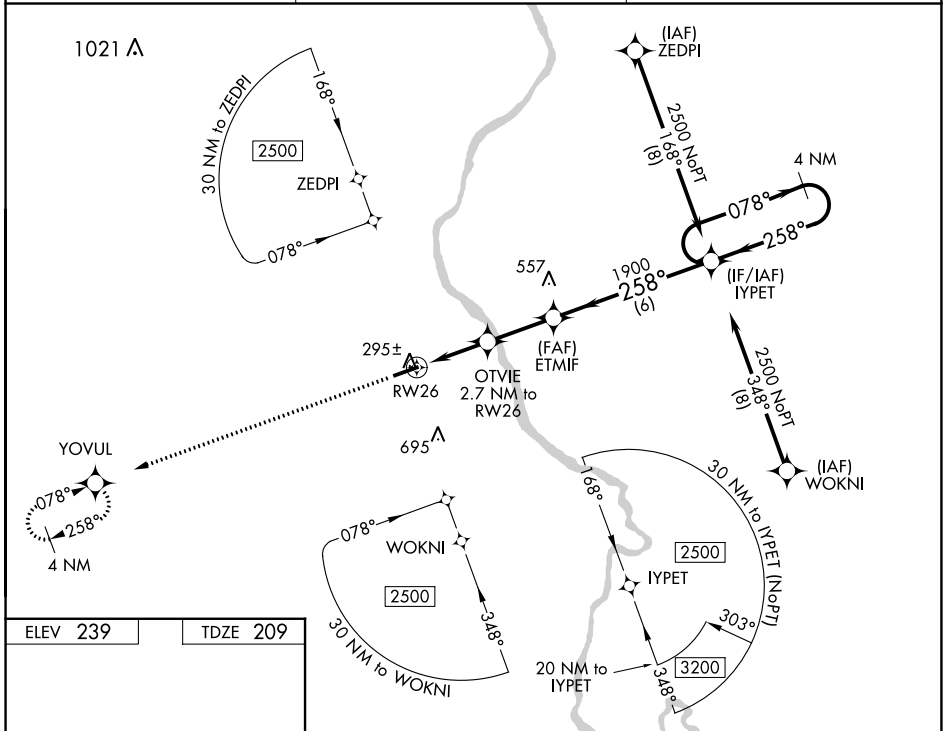
RNAV (GPS) RWY 26

CHERAW MUNI/LYNCH BELLINGER FLD (CQW)

▼ **▲** DME/DME RNP-0.3 NA. When local altimeter setting not received, use Darlington altimeter setting and increase all DA 44 feet, all MDA 60 feet, LNAV/VNAV all Cats visibility 1/8 mile, LNAV Cat C/D and Circling Cat C/D visibility 1/4 mile. Helicopter visibility reduction below 1 SM NA. For uncompensated Baro-VNAV systems, LNAV/VNAV NA below -15°C (5°F) or above 54°C (130°F). Procedure NA at night.

MISSED APPROACH: Climb to 2500 direct YOVL and hold.

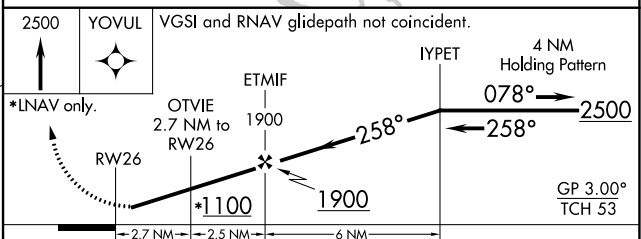
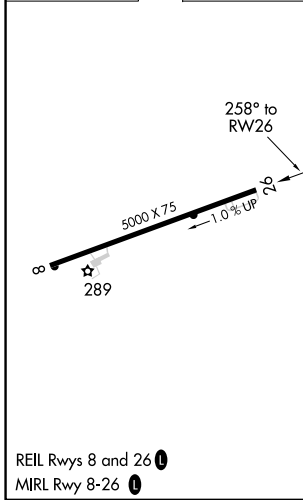
AWOS-3 124.825	FLORENCE APP CON * 118.6 341.7	UNICOM 122.8 (CTAF) 0
--------------------------	--	---------------------------------



SE-2, 22 FEB 2024 to 21 MAR 2024

SE-2, 22 FEB 2024 to 21 MAR 2024

ELEV 239	TDZE 209
----------	----------



CATEGORY	A	B	C	D
LPV DA		459-1	250 (300-1)	
LNAV/VNAV DA		578-1 1/4	369 (400-1 1/4)	
LNAV MDA		560-1	351 (400-1)	
<input checked="" type="checkbox"/> CIRCLING	700-1	461 (500-1)	1060-2 1/2 821 (900-2 1/2)	1060-2 3/4 821 (900-2 3/4)

APP CRS	Rwy Idg	5000
078°	TDZE	239
	Apt Elev	239

RNAV (GPS) RWY 8

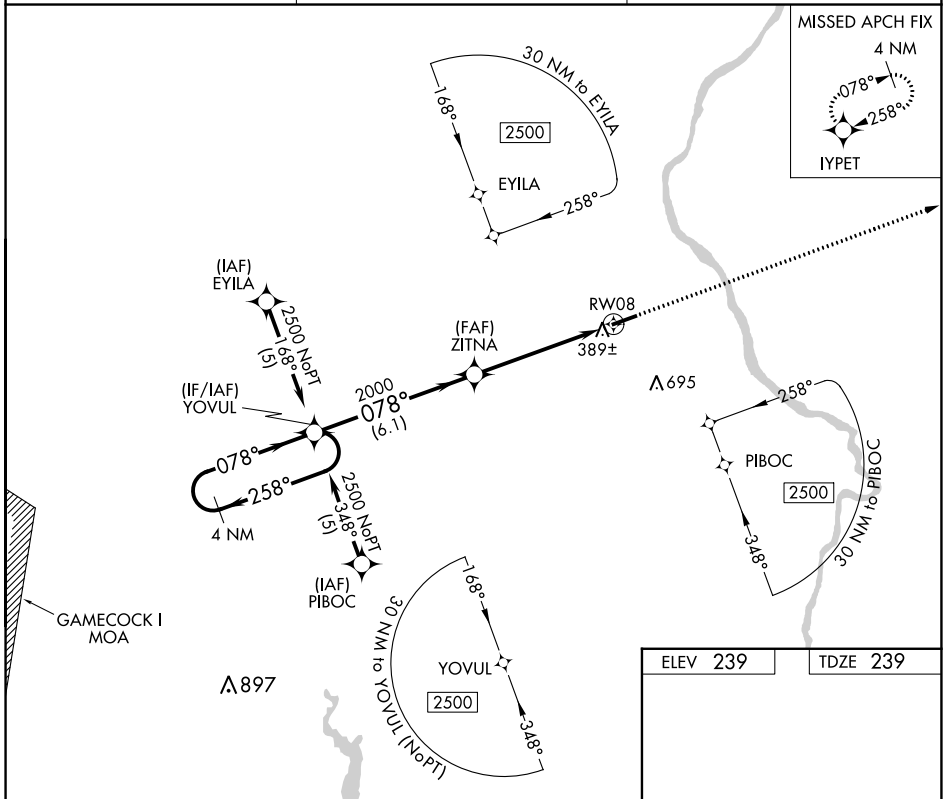
CHERAW MUNI/LYNCH BELLINGER FLD (CQW)

RNP APCH.

▼ Rwy 8 helicopter visibility reduction below 1 SM NA. When local altimeter setting not received, use Darlington altimeter setting and increase all MDA 60 feet and Circling Cat C/D visibility ¼ SM. Procedure NA at night.

MISSED APPROACH:
Climb to 2500 direct IYPET and hold.

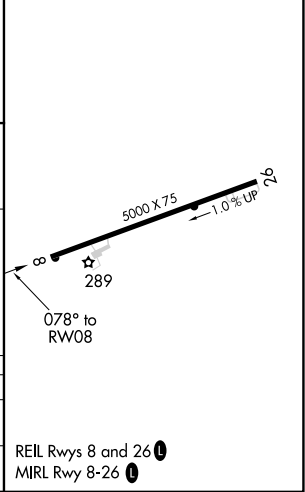
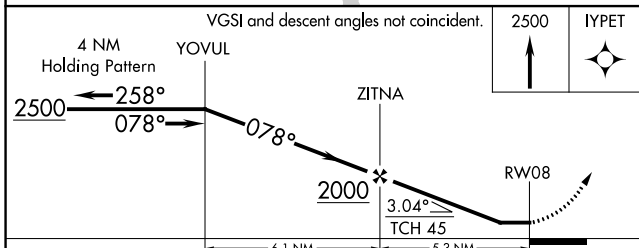
AWOS-3 124.825	FLORENCE APP CON ★ 118.6 341.7	UNICOM 122.8 (CTAF) 0
--------------------------	--	---------------------------------



SE-2, 22 FEB 2024 to 21 MAR 2024

SE-2, 22 FEB 2024 to 21 MAR 2024

ELEV 239	TDZE 239
----------	----------



CATEGORY	A	B	C	D
LNVA MDA	640-1	401 (500-1)	640-1¼	401 (500-1¼)
CIRCLING	700-1	461 (500-1)	1060-2½	1060-2¾
			821 (900-2½)	821 (900-2¾)

REIL Rwy 8 and 26 **0**
MIRL Rwy 8-26 **0**

VOR/DME CTF 114.55 Chan 92(Y)	APP CRS 080°	Rwy Idg 5000 TDZE 239 Apt Elev 239
---	------------------------	---

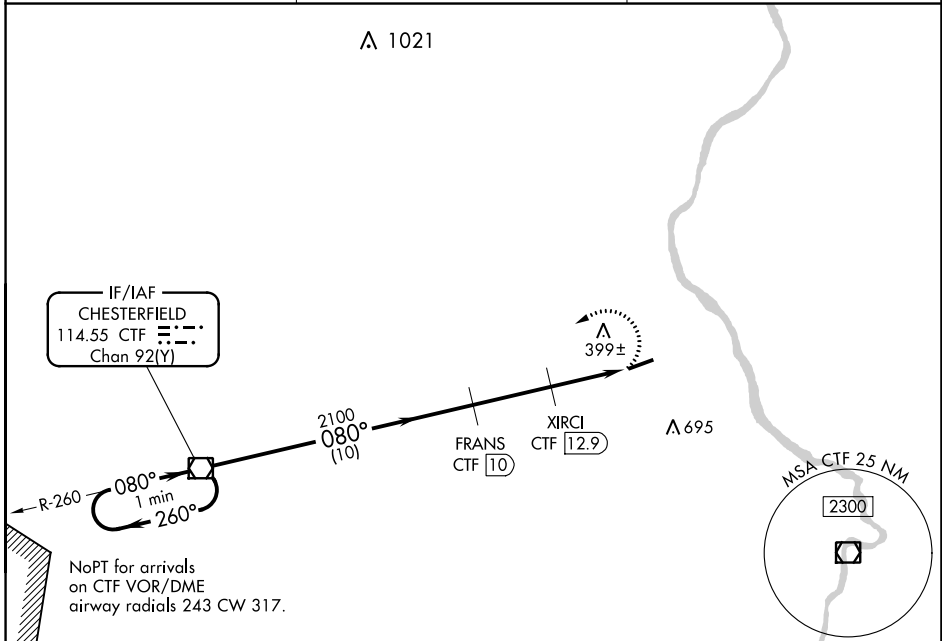
VOR/DME RWY 8

CHERAW MUNI/LYNCH BELLINGER FLD (CQW)

⚠ When local altimeter setting not received, use Darlington altimeter setting and increase all MDA 60 feet, and S-8 Cat C/D visibility 1/8 mile and Circling Cat C/D visibility 1/4 mile. Procedure NA at night. Helicopter visibility reduction below 1 SM NA.

MISSED APPROACH: Climbing left turn to 2100 direct CTF VOR/DME and hold.

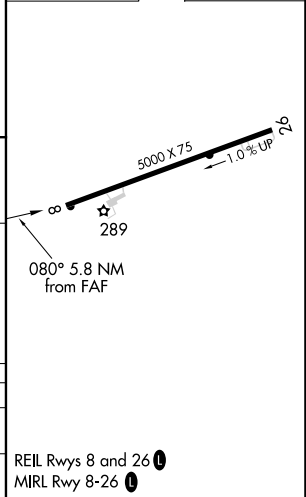
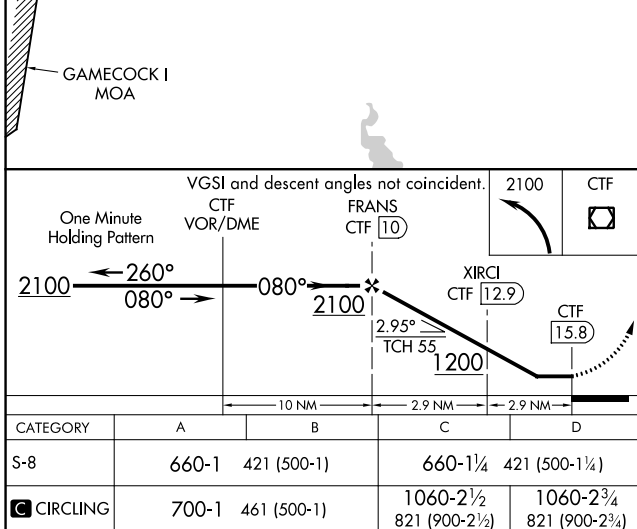
AWOS-3 124.825	FLORENCE APP CON ★ 118.6 341.7	UNICOM 122.8 (CTAF) 0
--------------------------	--	---------------------------------



SE-2, 22 FEB 2024 to 21 MAR 2024

SE-2, 22 FEB 2024 to 21 MAR 2024

ELEV 239	TDZE 239
-----------------	-----------------



CATEGORY	A	B	C	D
S-8	660-1	421 (500-1)	660-1¼	421 (500-1¼)
C CIRCLING	700-1	461 (500-1)	1060-2½ 821 (900-2½)	1060-2¾ 821 (900-2¾)

REIL Rwys 8 and 26 **0**
MIRL Rwy 8-26 **0**