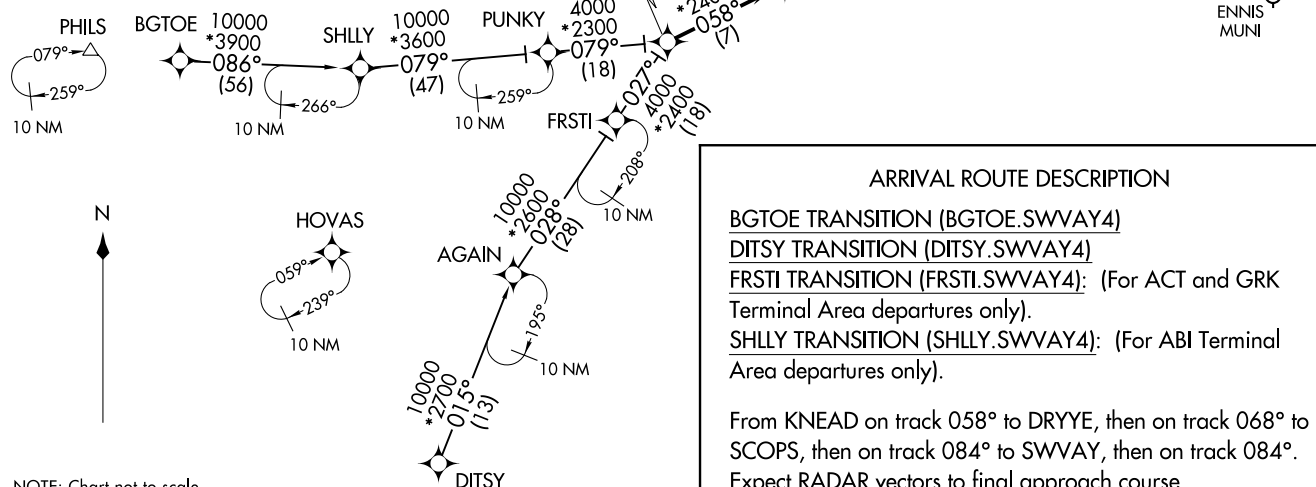


SWWAY FOUR ARRIVAL (RNAV)
 (KNEAD.SWWAY4) 26MAY16

(KNEAD.SWWAY4) 23222
 SWWAY FOUR ARRIVAL (RNAV)

REGIONAL APP CON
 135.975 379.9
 ADS ATIS
 133.4
 DAL D-ATIS
 120.15
 FWS ATIS
 120.025
 RBD ATIS
 126.35
 TKI ATIS
 119.925

- NOTE: RADAR required.
- NOTE: RNAV 1.
- NOTE: DME/DME/IRU or GPS required.
- NOTE: DAL ARRIVALS: Props only. Turbojet aircraft file and expect the BACHR or DRYYE RNAV STARS.
- NOTE: Props exempt from speed restriction at KNEAD.
- NOTE: When DFW is in south flow, turbojets expect to cross KNEAD at 10000.
- NOTE: When DFW is in north flow, turbojets expect to cross KNEAD at 12000.



ARRIVAL ROUTE DESCRIPTION

BGTOE TRANSITION (BGTOE.SWWAY4)

DITSY TRANSITION (DITSY.SWWAY4)

FRSTI TRANSITION (FRSTI.SWWAY4): (For ACT and GRK Terminal Area departures only).

SHLLY TRANSITION (SHLLY.SWWAY4): (For ABI Terminal Area departures only).

From KNEAD on track 058° to DRYYE, then on track 068° to SCOPS, then on track 084° to SSWAY, then on track 084°.

Expect RADAR vectors to final approach course.

NOTE: Chart not to scale.

DALLAS, TEXAS

DALLAS, TEXAS

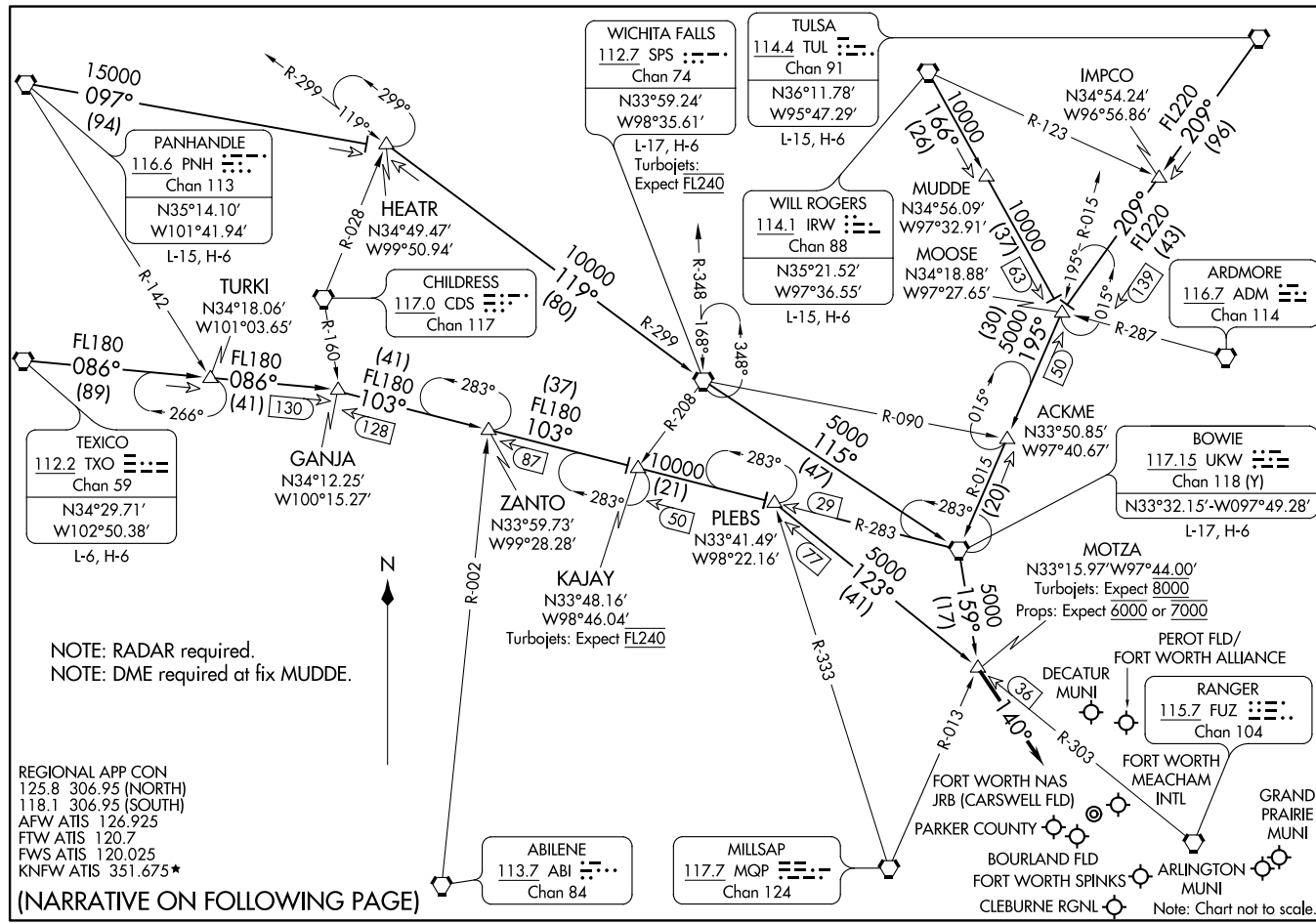
AL-768 (FAA)

MOTZA ONE ARRIVAL
(MOTZA,MOTZA1) 17JUN21

MOTZA ONE ARRIVAL
(MOTZA,MOTZA1) 22Z251

AL-6918 (FAA)

FORT WORTH, TEXAS



NOTE: RADAR required.
NOTE: DME required at fix MUDE.

REGIONAL APP CON
125.8 306.95 (NORTH)
118.1 306.95 (SOUTH)
AFW ATIS 126.925
FTW ATIS 120.7
FWS ATIS 120.025
KNFW ATIS 351.675*

(NARRATIVE ON FOLLOWING PAGE)

FORT WORTH, TEXAS

ARRIVAL ROUTE DESCRIPTION

BOWIE TRANSITION (UKW.MOTZA1): From over UKW VORTAC on UKW R-159 to MOTZA. Thence

MUDDE TRANSITION (MUDDE.MOTZA1): From over MUDDE on IRW R-166 to MOOSE, then on UKW R-015 to UKW VORTAC, then on UKW R-159 to MOTZA. Thence

PANHANDLE TRANSITION (PNH.MOTZA1): From over PNH VORTAC on PNH R-097 to HEATR, then on SPS R-299 to SPS VORTAC, then on SPS R-115 and UKW R-299 to UKW VORTAC, then on UKW R-159 to MOTZA. Thence

TEXICO TRANSITION (TXO.MOTZA1): From over TXO VORTAC on TXO R-086 to GANJA, then on UKW R-283 to PLEBS, then on FUZ R-303 to MOTZA. Thence

TULSA TRANSITION (TUL.MOTZA1): From over TUL VORTAC on TUL R-209 to MOOSE, then on UKW R-015 to UKW VORTAC, then on UKW R-159 to MOTZA. Thence

TURKI TRANSITION (TURKI.MOTZA1): From over TURKI on TXO R-086 to GANJA, then on UKW R-283 to PLEBS, then on FUZ R-303 to MOTZA. Thence

WICHITA FALLS TRANSITION (SPS.MOTZA1): From over SPS VORTAC on SPS R-115 and UKW R-299 to UKW VORTAC, then on UKW R-159 to MOTZA. Thence

WILL ROGERS TRANSITION (IRW.MOTZA1): From over IRW VORTAC on IRW R-166 to MOOSE, then on UKW R-015 to UKW VORTAC, then on UKW R-159 to MOTZA. Thence

. . . . From over MOTZA heading 140° for vectors to final approach course.

SC-2, 22 FEB 2024 to 21 MAR 2024

SC-2, 22 FEB 2024 to 21 MAR 2024

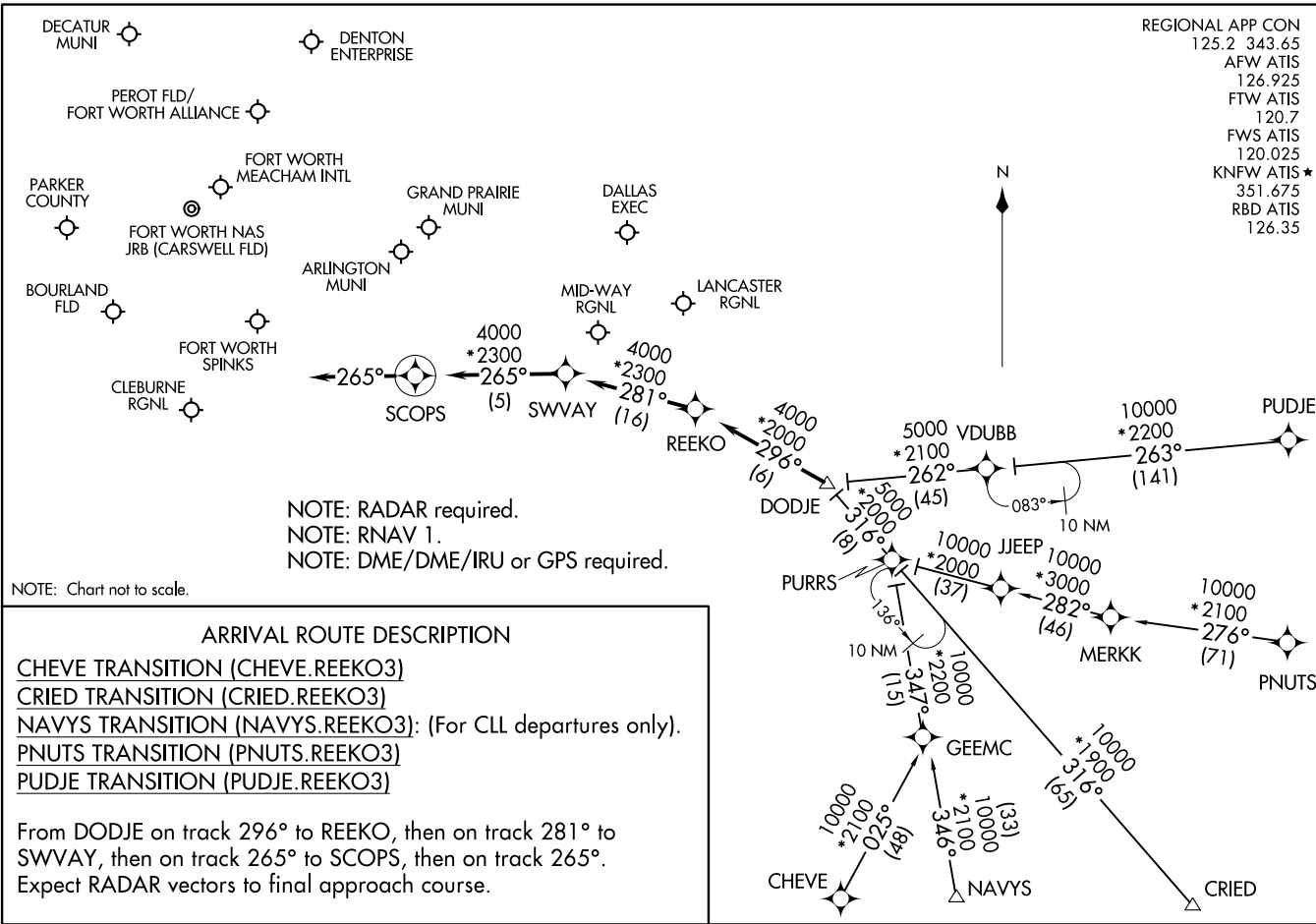
REEKO THREE ARRIVAL (RNAV)
(DODJE.REEK03) 26MAY16

REEKO THREE ARRIVAL (RNAV)
(DODJE.REEK03) 23Z22

AL-6918 (FAA)

FORT WORTH, TEXAS

REGIONAL APP CON
125.2 343.65
AFW ATIS
126.925
FTW ATIS
120.7
FWS ATIS
120.025
KNFW ATIS*
351.675
RBD ATIS
126.35



NOTE: Chart not to scale.

ARRIVAL ROUTE DESCRIPTION

- CHEVE TRANSITION (CHEVE.REEK03)
- CRIED TRANSITION (CRIED.REEK03)
- NAVYS TRANSITION (NAVYS.REEK03): (For CLL departures only).
- PNUTS TRANSITION (PNUTS.REEK03)
- PUDJE TRANSITION (PUDJE.REEK03)

From DODJE on track 296° to REEKO, then on track 281° to SWVAY, then on track 265° to SCOPS, then on track 265°.
Expect RADAR vectors to final approach course.

FORT WORTH, TEXAS

SASIE SEVEN ARRIVAL
(SASIE: SASIE7) 29DEC22

(SASIE: SASIE7) 22363
SASIE SEVEN ARRIVAL

REGIONAL APP CON
124.3 282.275
ADS ATIS
133.4
AFW ATIS
126.925
FTW ATIS
120.7
FWS ATIS
120.025
KNFW ATIS*
351.675

ARDMORE
116.7 ADM
Chan 114
N34°12.70'
W97°10.09'
L-17, H-6

TULSA
114.4 TUL
Chan 91
N36°11.78'
W95°47.29'
L-15, H-6

FORT SMITH
110.4 FSM
Chan 41
N35°23.30'-W94°16.29'
L-16, H-6

LITTLE ROCK
113.9 LIT
Chan 86
N34°40.66'-W92°10.83'
L-18, H-6

RICH MOUNTAIN
113.5 PGO
Chan 82

MEEOW
N34°19.09'
W93°31.42'

BIRLE
N34°17.64'
W95°26.78'

GAATZ
N33°54.23'
W95°51.31'

ROBEY
N33°42.02'
W95°41.34'

GLOVE
N33°52.31'
W95°06.25'

CAINE
N33°38.95'
W96°23.23'

BONHAM
114.6 BYP
Chan 93
N33°32.25'
W96°14.05'
L-17, H-6

MONTE
N33°32.41'
W95°53.71'

PARIS
113.6 PRX
Chan 83
N33°32.54'
W95°26.90'
L-17

GREGG COUNTY
112.9 GGG
Chan 76

TEXARKANA
116.3 TXK
Chan 110
N33°30.83'
W94°04.39'
L-17, H-6

EL DORADO
115.5 ELD
Chan 102

SASIE
N33°27.01'
W96°35.80'

WEST SATELLITE TURBOJETS
LANDING NORTH Expect 10000
WEST SATELLITE TURBOJETS
LANDING SOUTH Expect 11000
LANDING ADS:
TURBOJETS Expect 6000
PROPS Expect 5000 or 6000.

DENTON
ENTERPRISE

DECATUR
MUNI

PEROT FLD/FORT
WORTH ALLIANCE

RANGER
115.7 FUZ
Chan 104

FORT WORTH MEACHAM INTL

FORT WORTH NAS JBR (CARSWELL FLD)

PARKER COUNTY

ARLINGTON MUNI

BOURLAND
FLD

FORT WORTH SPINKS

CLEBURNE RGNL



NOTE: DME required for fixes ROBEY and MONTE.
NOTE: RADAR required.
NOTE: ATC assigned only for aircraft landing ADS.

(NARRATIVE ON FOLLOWING PAGE)

NOTE: Chart not to scale.

AL-6918 (FAA)

DALLAS-FORT WORTH, TEXAS

DALLAS-FORT WORTH, TEXAS

ARRIVAL ROUTE DESCRIPTION

ARDMORE TRANSITION (ADM.SASIE7): From over ADM VORTAC on ADM R-125 and BYP R-305 to CAINE, then on FUZ R-035 to SASIE. Thence

BONHAM TRANSITION (BYP.SASIE7): From over BYP VORTAC on BYP R-248 to SASIE. Thence

CAINE TRANSITION (CAINE.SASIE7): From over CAINE on FUZ VORTAC R-035 to SASIE. Thence

FORT SMITH TRANSITION (FSM.SASIE7): From over FSM VORTAC on FSM R-215 to MAMEE, then on BYP R-035 to BYP VORTAC, then on BYP R-248 to SASIE. Thence

LITTLE ROCK TRANSITION (LIT.SASIE7): From over LIT VORTAC on LIT R-247 to MEEOW, then on LIT R-247 and BYP R-064 to GLOVE, then on BYP R-064 to BYP VORTAC, then on BYP R-248 to SASIE. Thence

PARIS TRANSITION (PRX.SASIE7): From over PRX VOR/DME on PRX R-263 and BYP R-083 to MONTE, then on BYP R-083 to BYP VORTAC, then on BYP R-248 to SASIE. Thence

TEXARKANA TRANSITION (TXK.SASIE7): From over TXK VORTAC on TXK R-286 to GLOVE, then on BYP R-064 to BYP VORTAC, then on BYP R-248 to SASIE. Thence

TULSA TRANSITION (TUL.SASIE7): From over TUL VORTAC on TUL R-157 to MAMEE, then on BYP R-035 to BYP VORTAC, then on BYP R-248 to SASIE. Thence

. . . . from SASIE, then on heading 255° or as assigned by ATC. Expect RADAR vectors to final approach course.

SC-2, 22 FEB 2024 to 21 MAR 2024

SC-2, 22 FEB 2024 to 21 MAR 2024

TRUUK TWO ARRIVAL (RNAV)

DALLAS-FORT WORTH, TEXAS

REGIONAL APP CON
 118.1 306.95
 AFW ATIS
 126.925
 FTW ATIS
 120.7
 FWS ATIS
 120.025
 KNFW ATIS ★
 351.675

NOTE: RADAR required.
 NOTE: RNAV 1.
 NOTE: DME/DME/IRU or GPS required.

SASIE
 VERTICAL NAVIGATION
 PLANNING INFORMATION

TURBOJET NORTH FLOW:

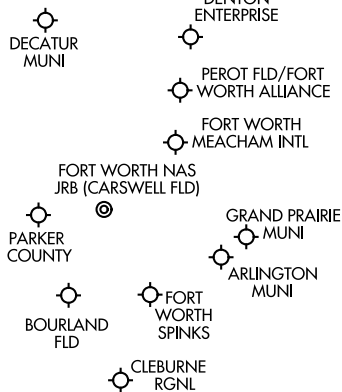
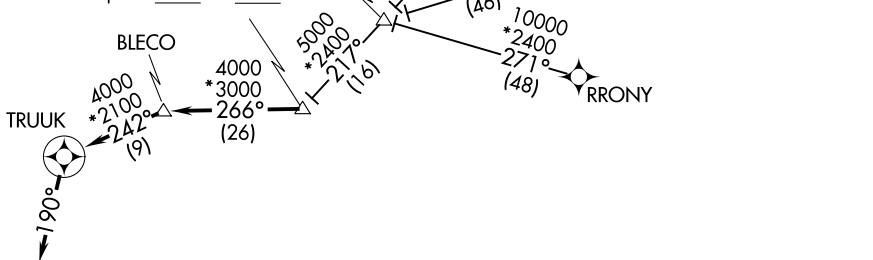
Expect 10000

TURBOJET SOUTH FLOW:

Expect 11000

PROPS:

Expect 5000 or 6000



NOTE: Chart not to scale.

ARRIVAL ROUTE DESCRIPTION

AXEE TRANSITION (AXEE.TRUUK2): (For aircraft filing FL230 and below).

HITUG TRANSITION (HITUG.TRUUK2)

PONY TRANSITION (PONY.TRUUK2)

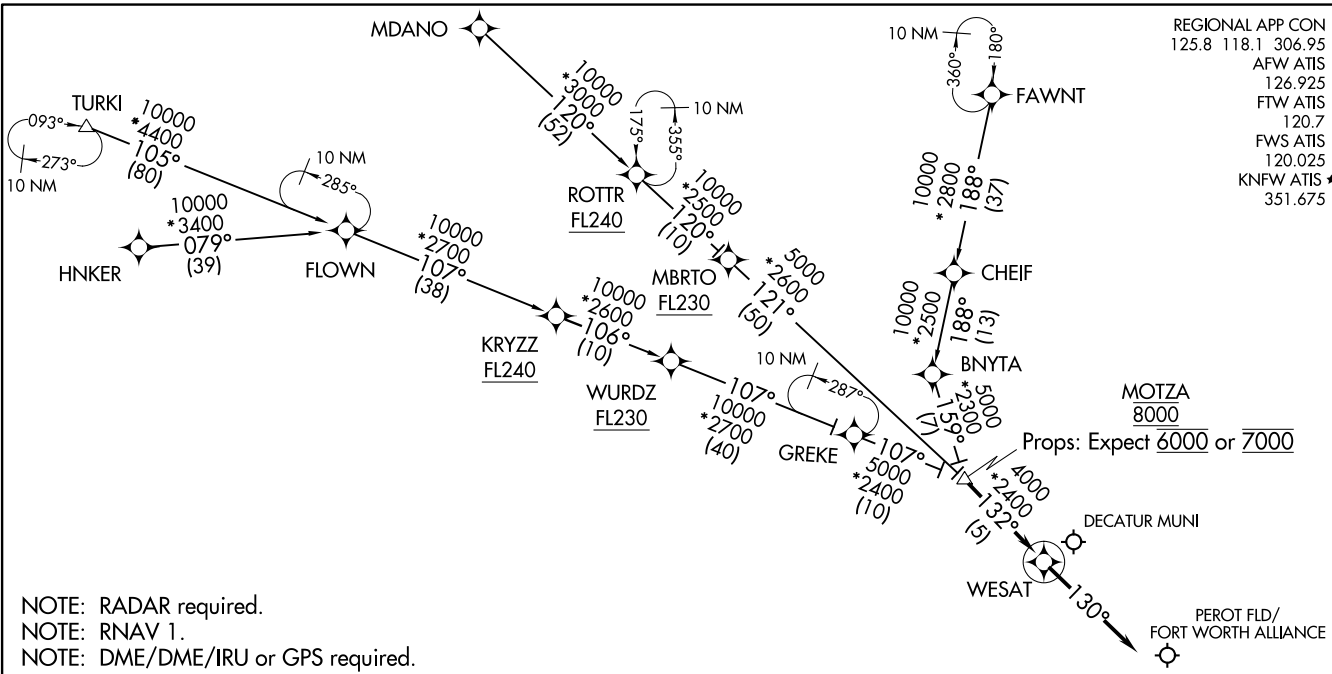
RRNET TRANSITION (RRNET.TRUUK2)

RRONY TRANSITION (RRONY.TRUUK2): (For aircraft filing FL230 and below).

From SASIE on track 266° to BLECO, then on track 242° to TRUUK, then on track 190°. Expect RADAR vectors to final approach course.

WESAT TWO ARRIVAL (RNAV)
(MOTZA.WESAT2) 25JUN15

(MOTZA.WESAT2) 23222
WESAT TWO ARRIVAL (RNAV)



REGIONAL APP CON
125.8 118.1 306.95
AFW ATIS
126.925
FTW ATIS
120.7
FWS ATIS
120.025
KNFW ATIS *
351.675

NOTE: RADAR required.
NOTE: RNAV 1.
NOTE: DME/DME/IRU or GPS required.

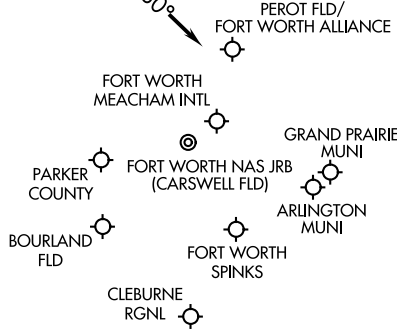
ARRIVAL ROUTE DESCRIPTION

FAWNT TRANSITION (FAWNT.WESAT2)
HNKER TRANSITION (HNKER.WESAT2)
MDANO TRANSITION (MDANO.WESAT2)
TURKI TRANSITION (TURKI.WESAT2)

From MOTZA on track 132° to WESAT, then on track 130°.
Expect RADAR vectors to final approach course.



NOTE: Chart not to scale.



AL-6918 (FAA)

DALLAS-FORT WORTH, TEXAS