

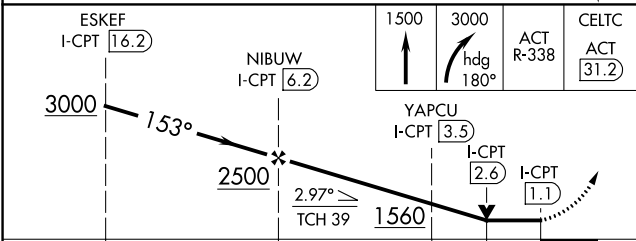
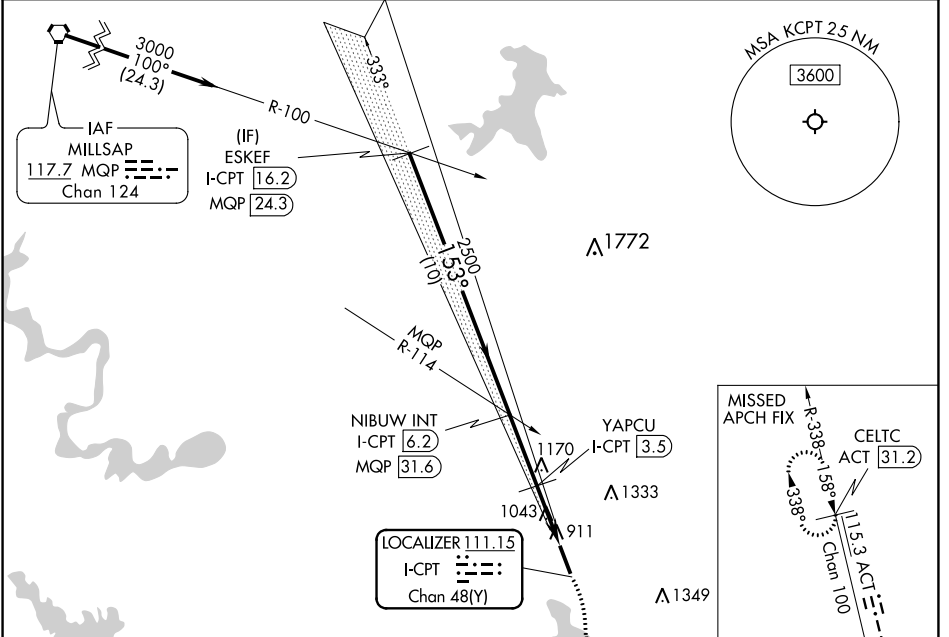
LOC I-CPT 111.15 Chan 48(Y)	APP CRS 153°	Rwy ldg TDZE Apt Elev	5512 854 854
------------------------------------------	------------------------	-----------------------------	-----------------------------------------

LOC RWY 15

CLEBURNE RGNL (CPT)

DME required.	MISSED APPROACH: Climb to 1500 then climbing right turn to 3000 on heading 180° and ACT VORTAC R-338 to CELTC/ACT 31.2 DME.
▼ ▲ NA Rwy 15 helicopter visibility reduction below 3/4 SM NA.	

AWOS-3 119.525	REGIONAL APP CON 135.975 379.9	UNICOM 122.8 (CTAF) 0
--------------------------	------------------------------------------	---------------------------------



CATEGORY	A	B	C	D
S-15	1360-1	506 (600-1)	1360-1 3/8	506 (600-1 3/8)
CIRCLING	1400-1	546 (600-1)	1680-2 1/2 826 (900-2 1/2)	1700-2 3/4 846 (900-2 3/4)

SC-2, 28 JAN 2021 to 25 FEB 2021

SC-2, 28 JAN 2021 to 25 FEB 2021

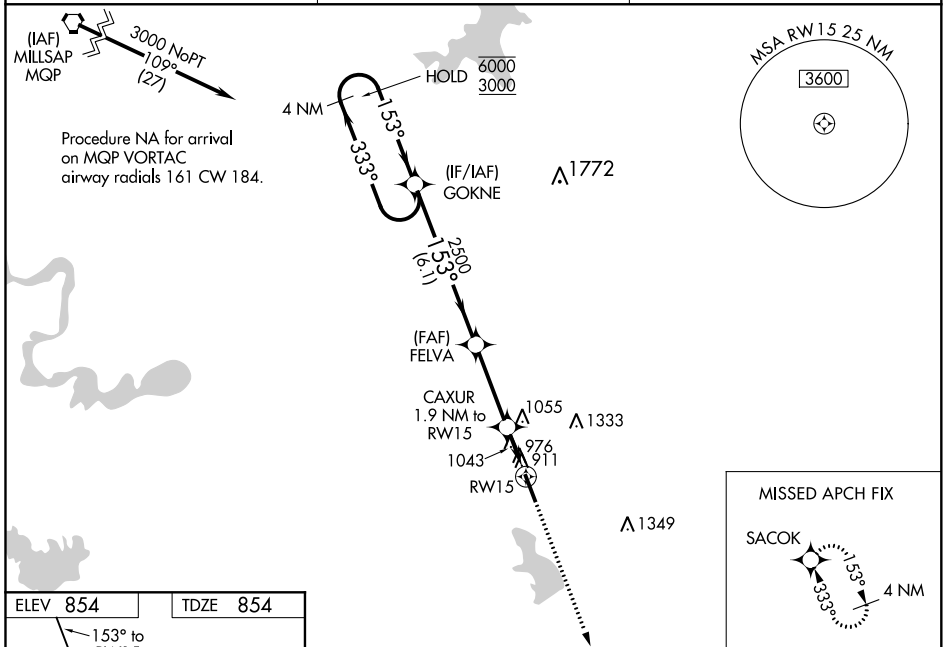
WAAS CH 61331 W15A	APP CRS 153°	Rwy Idg TDZE Apt Elev	5512 854 854
----------------------------------------	------------------------	-----------------------------	-----------------------------------------

RNAV (GPS) RWY 15

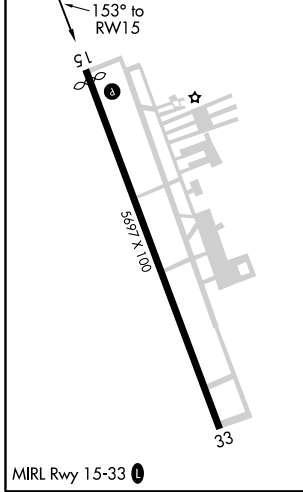
CLEBURNE RGNL (CPT)

RNP APCH.	MISSED APPROACH: Climb to 3000 direct SACOK and hold.
<p>▼ For uncompensated Baro-VNAV systems, LNAV/VNAV NA below -16°C or above 54°C. Rwy 15 helicopter visibility reduction below ¾ SM NA.</p> <p>▲</p>	

AWOS-3 119.525	REGIONAL APP CON 135.975 379.9	UNICOM 122.8 (CTAF) 0
--------------------------	------------------------------------------	---------------------------------



ELEV 854	TDZE 854
-----------------	-----------------



4 NM Holding Pattern	GOKNE	FELVA	CAXUR	SACOK
6000 ← 333°	→ 153° →	2500	1.9 NM to RWY 15	4 NM
3000				
GP 3.00° TCH 39		*1480	*LNAV only.	
	6.1 NM	3.2 NM	1.9 NM	
CATEGORY	A	B	C	D
LPV DA		1240-1 ³ / ₈	386 (400-1 ³ / ₈)	
LNAV/VNAV DA		1397-1 ⁷ / ₈	543 (600-1 ⁷ / ₈)	
LNAV MDA	1360-1	506 (600-1)	1360-1 ³ / ₈	506 (600-1 ³ / ₈)
C CIRCLING	1400-1	546 (600-1)	1680-2 ¹ / ₂ 826 (900-2 ¹ / ₂)	1700-2 ³ / ₄ 846 (900-2 ³ / ₄)

SC-2, 28 JAN 2021 to 25 FEB 2021

SC-2, 28 JAN 2021 to 25 FEB 2021

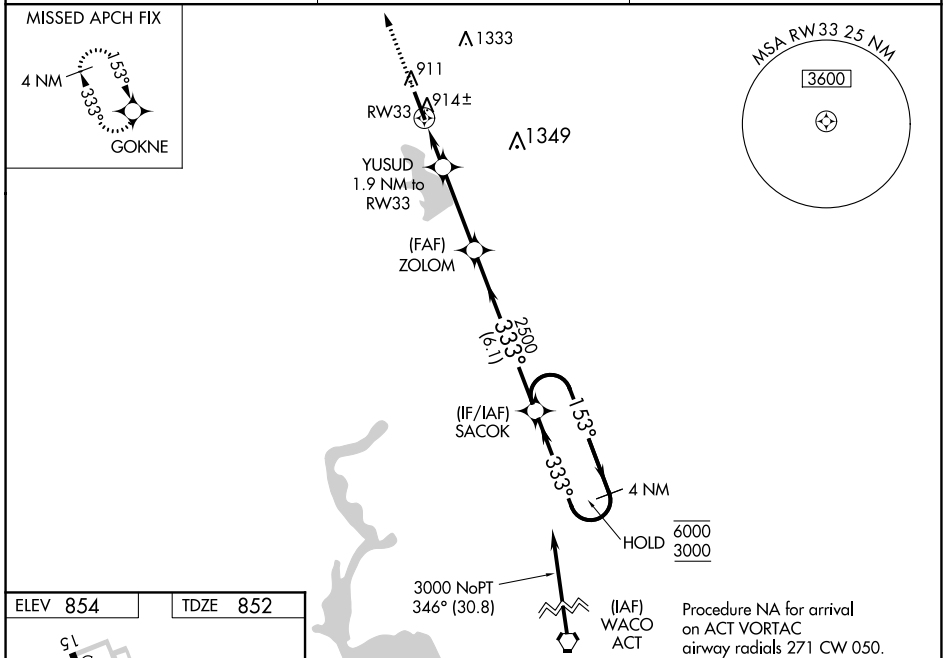
WAAS CH 82632 W33A	APP CRS 333°	Rwy Idg TDZE Apt Elev	5697 852 854
----------------------------------------	------------------------	-----------------------------	-----------------------------------------

RNAV (GPS) RWY 33

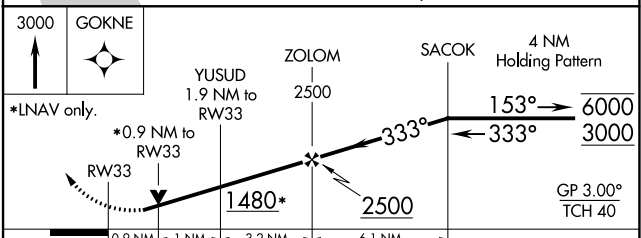
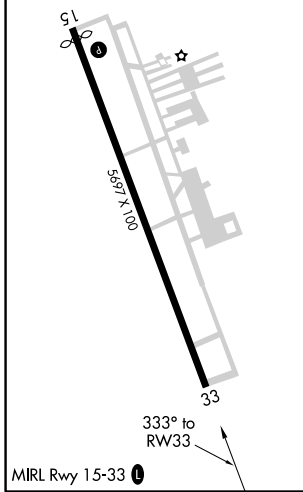
CLEBURNE RGNL (CPT)

RNP APCH.	MISSED APPROACH: Climb to 3000 direct GOKNE and hold.
<p>▼ For uncompensated Baro-VNAV systems, LNAV/VNAV NA below -16°C or above 54°C. Rwy 33 helicopter visibility reduction below ¾ SM NA.</p> <p>▲</p>	

AWOS-3 119.525	REGIONAL APP CON 135.975 379.9	UNICOM 122.8 (CTAF) 0
--------------------------	------------------------------------------	---------------------------------



ELEV 854	TDZE 852
-----------------	-----------------



CATEGORY	A	B	C	D
LPV DA		1102-7/8	250 (300-7/8)	
LNAV/VNAV DA		1102-7/8	250 (300-7/8)	
LNAV MDA		1180-1	328 (400-1)	
<input checked="" type="checkbox"/> CIRCLING	1400-1	546 (600-1)	1680-2½ 826 (900-2½)	1700-2¾ 846 (900-2¾)

SC-2, 28 JAN 2021 to 25 FEB 2021

SC-2, 28 JAN 2021 to 25 FEB 2021