

NDB CNH <b>233</b>	APP CRS <b>048°</b>	Rwy Idg TDZE Apt Elev	<b>N/A</b> <b>N/A</b> <b>544</b>
-----------------------	------------------------	-----------------------------	--

# NDB-A

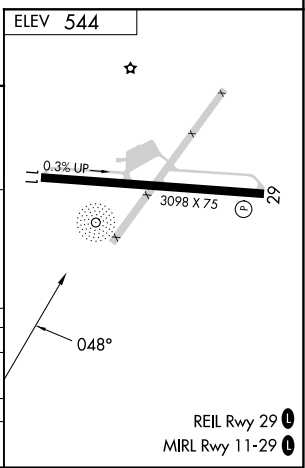
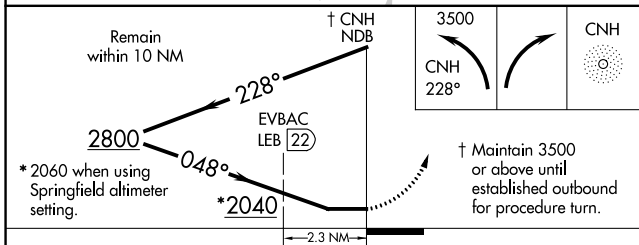
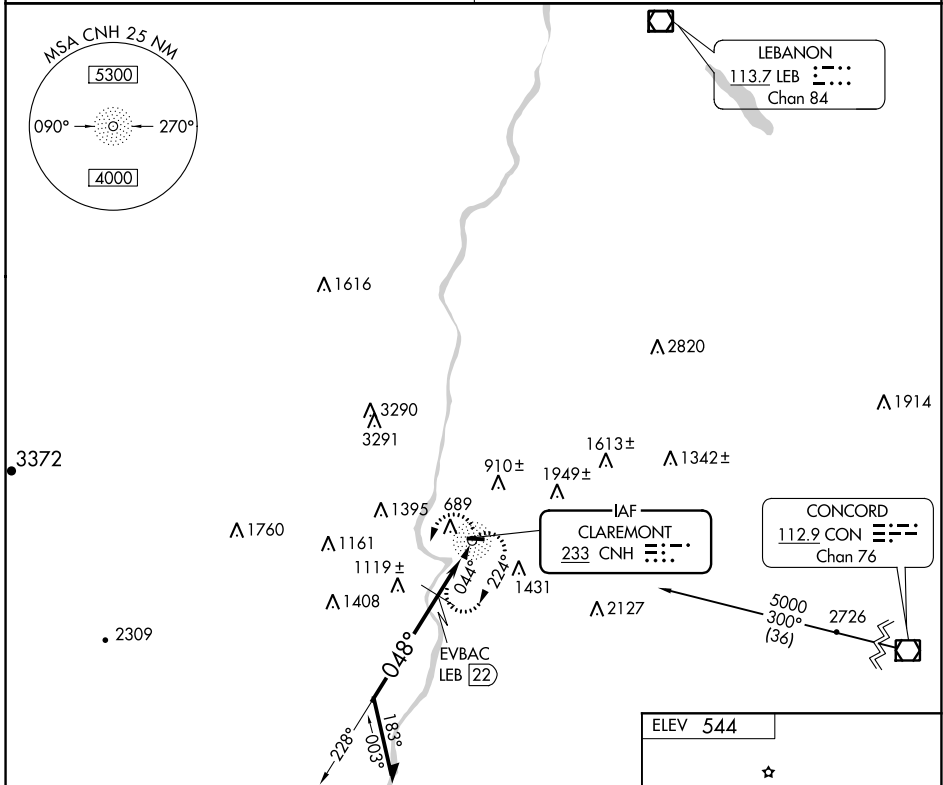
CLAREMONT MUNI (CNH)

**NA**  
-25°C

Procedure NA at night. Obtain local altimeter setting on CTAF; when not received, use Springfield altimeter setting and increase all MDA 20 feet.

MISSED APPROACH: Climbing left turn to 3500 via CNH NDB 228° bearing outbound then right turn direct CNH NDB and hold.

BOSTON CENTER <b>134.7 269.475</b>	UNICOM <b>122.7 (CTAF)</b>
---------------------------------------	-------------------------------



CATEGORY	A	B	C	D
CIRCLING	2040-1¼ 1496 (1500-1¼)	2040-1½ 1496 (1500-1½)		NA
EVBAC DME MINIMUMS				
CIRCLING	1520-1¼ 976 (1000-1¼)	1740-1½ 1196 (1200-1½)		NA

NE-1, 22 FEB 2024 to 21 MAR 2024

NE-1, 22 FEB 2024 to 21 MAR 2024

APP CRS Rwy Idg **3098**  
 289° TDZE **543**  
 Apt Elev **544**

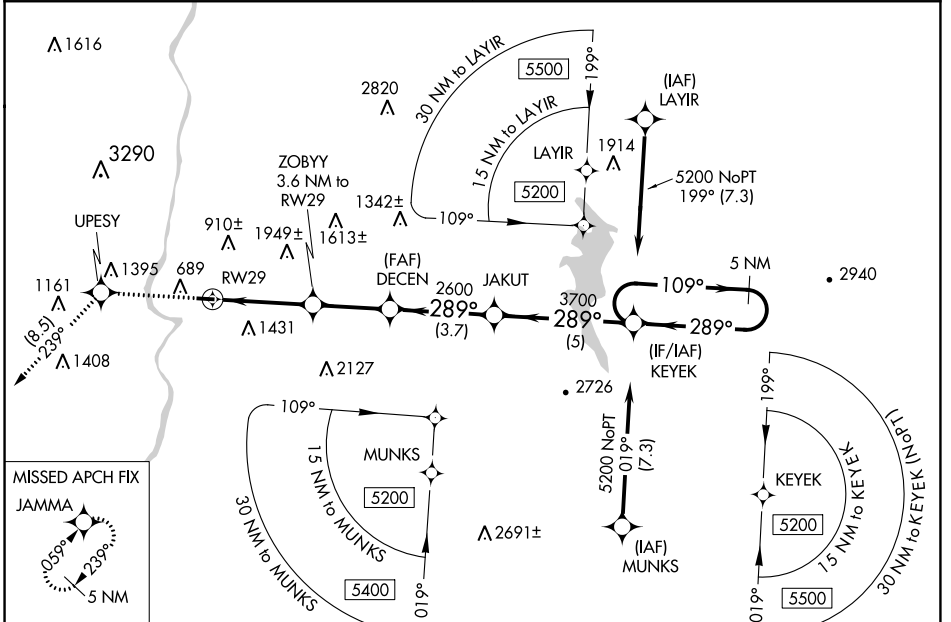
# RNAV (GPS) RWY 29

CLAREMONT MUNI (CNH)

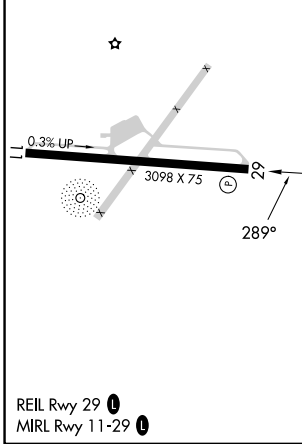
**⚠** NA When local altimeter setting not received, use Hartsness State altimeter setting and increase all MDAs 20 feet. DME/DME RNP-0.3 NA. Procedure NA at night. Rwy 11, 29 helicopter visibility reduction below 1 SM NA.

**⚠** MISSED APPROACH: Climb to 5400 direct UPESY and on track 239° to JAMMA and hold, continue climb-in-hold to 5400.

BOSTON CENTER **134.7 269.475** UNICOM **122.7 (CTAF)**



ELEV **544** TDZE **543**



5400	UPESY	tr 239°	JAMMA	Visual Segment - Obstacles.
↑	⬠		⬠	
CATEGORY	A	B	C	D
LNAV MDA	1520-1¼ 977 (1000-1¼)	1520-1½ 977 (1000-1½)		NA
CIRCLING	1520-1¼ 976 (1000-1¼)	1740-1½ 1196 (1200-1½)		NA

NE-1, 22 FEB 2024 to 21 MAR 2024

NE-1, 22 FEB 2024 to 21 MAR 2024