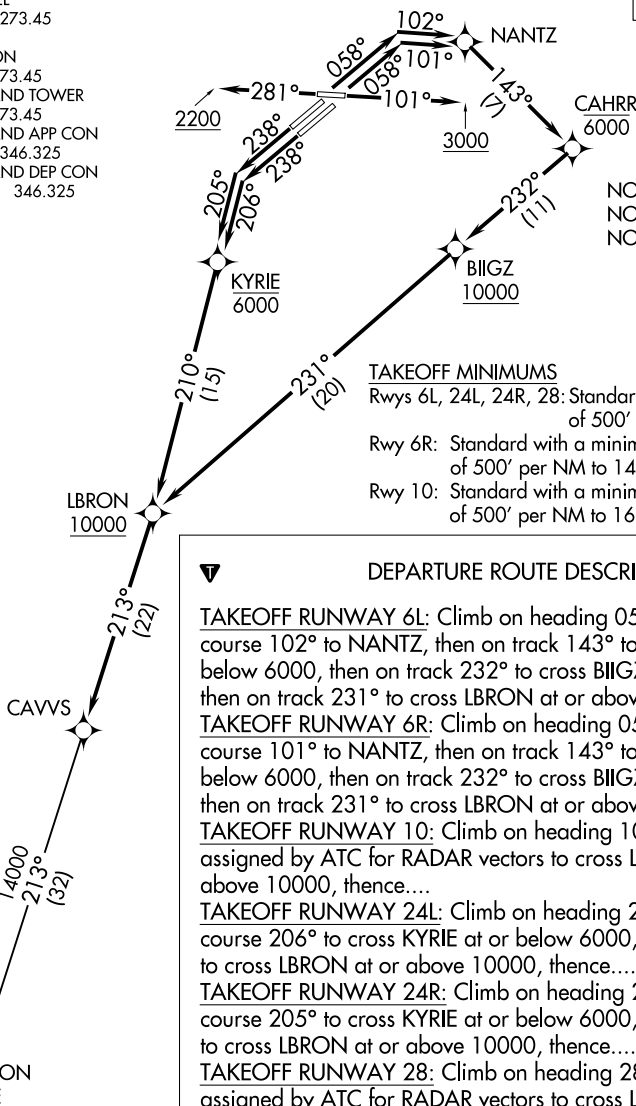


CAVVS FOUR DEPARTURE (RNAV)

D-ATIS
132.375
CLNC DEL
125.05 273.45
CPDLC
GND CON
121.7 273.45
CLEVELAND TOWER
124.5 273.45
CLEVELAND APP CON
126.55 346.325
CLEVELAND DEP CON
135.875 346.325

**TOP ALTITUDE:
14000**



NOTE: RADAR required.
NOTE: RNAV 1.
NOTE: DME/DME/IRU or GPS required.

TAKEOFF MINIMUMS

Rwys 6L, 24L, 24R, 28: Standard with a minimum climb of 500' per NM to 1300.
Rwy 6R: Standard with a minimum climb of 500' per NM to 1400.
Rwy 10: Standard with a minimum climb of 500' per NM to 1600.

DEPARTURE ROUTE DESCRIPTION

TAKEOFF RUNWAY 6L: Climb on heading 058° to intercept course 102° to NANTZ, then on track 143° to cross CAHRR at or below 6000, then on track 232° to cross BIIGZ at or above 10000, then on track 231° to cross LBRON at or above 10000, thence....
TAKEOFF RUNWAY 6R: Climb on heading 058° to intercept course 101° to NANTZ, then on track 143° to cross CAHRR at or below 6000, then on track 232° to cross BIIGZ at or above 10000, then on track 231° to cross LBRON at or above 10000, thence....
TAKEOFF RUNWAY 10: Climb on heading 101° to 3000, then as assigned by ATC for RADAR vectors to cross LBRON at or above 10000, thence....
TAKEOFF RUNWAY 24L: Climb on heading 238° to intercept course 206° to cross KYRIE at or below 6000, then on track 210° to cross LBRON at or above 10000, thence....
TAKEOFF RUNWAY 24R: Climb on heading 238° to intercept course 205° to cross KYRIE at or below 6000, then on track 210° to cross LBRON at or above 10000, thence....
TAKEOFF RUNWAY 28: Climb on heading 281° to 2200, then as assigned by ATC for RADAR vectors to cross LBRON at or above 10000, thence....

....on track 213° to CAVVS, then on (transition). Maintain 14000, expect filed altitude ten minutes after departure.

APPLETON TRANSITION (CAVVS4.APE)

NOTE: Chart not to scale.

CAVVS FOUR DEPARTURE (RNAV)

EC-2, 22 FEB 2024 to 21 MAR 2024

EC-2, 22 FEB 2024 to 21 MAR 2024

GTIKE FOUR DEPARTURE (RNAV)
[GTIKE4,GTIKE] 26MAR20

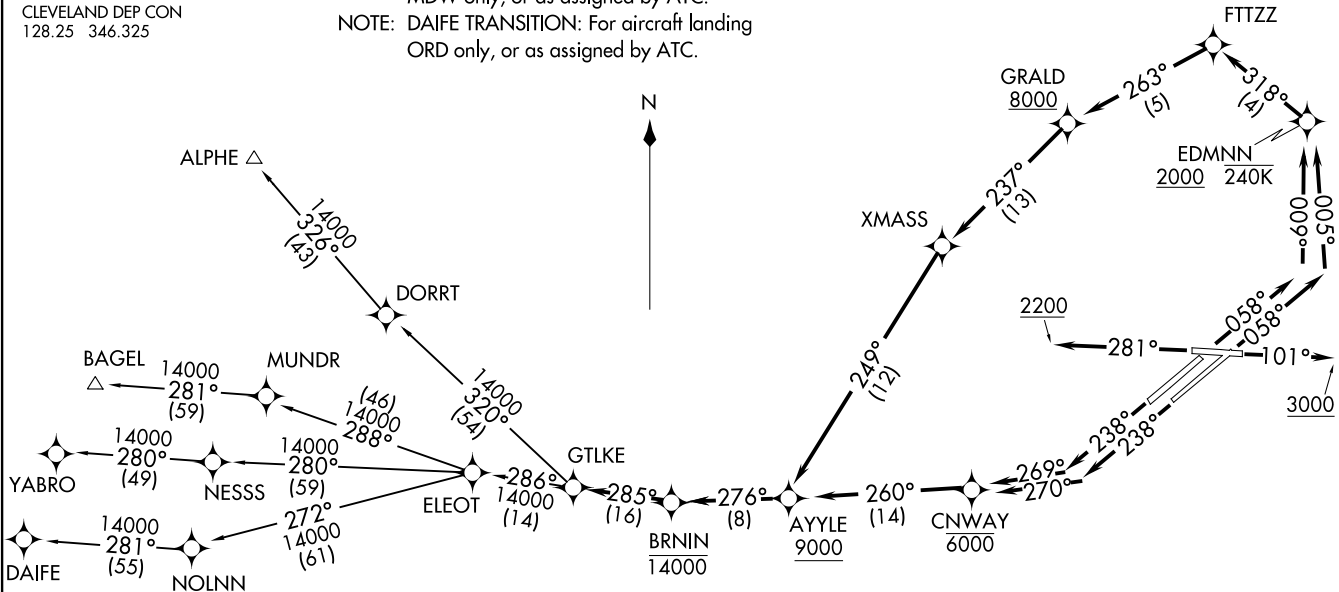
D-ATIS
132.375
CLNC DEL
125.05 273.45
CPDLC
GND CON
121.7 273.45
CLEVELAND TOWER
124.5 273.45
CLEVELAND APP CON
126.55 346.325
CLEVELAND DEP CON
128.25 346.325

**TOP ALTITUDE:
14000**

- NOTE: RADAR required.
- NOTE: RNAV 1.
- NOTE: DME/DME/IRU or GPS required.
- NOTE: BAGEL TRANSITION: For aircraft landing MDW only, or as assigned by ATC.
- NOTE: DAIFE TRANSITION: For aircraft landing ORD only, or as assigned by ATC.

TAKEOFF MINIMUMS

Rwys 6L/R, 24L/R, 28: Standard with a minimum climb of 500' per NM to 1300.
Rwy 10: Standard with a minimum climb of 500' per NM to 1600.



[GTIKE4,GTIKE] 22139
GTIKE FOUR DEPARTURE (RNAV)

A-84 (FAA)
CLEVELAND-HOPKINS INTL (CLE)
CLEVELAND, OHIO

CLEVELAND, OHIO
CLEVELAND-HOPKINS INTL (CLE)

NOTE: Chart not to scale.

(NARRATIVE ON FOLLOWING PAGE)

GTLKE FOUR DEPARTURE (RNAV)



DEPARTURE ROUTE DESCRIPTION

TAKEOFF RUNWAY 6L: Climb on heading 058° to intercept course 009° to cross EDMNN at or above 2000 and at or below 240K, then on track 318° to FTTZZ, then on track 263° to cross GRALD at or above 8000, then on track 237° to XMASS, then on track 249° to cross AYYLE at or above 9000, thence....

TAKEOFF RUNWAY 6R: Climb on heading 058° to intercept course 005° to cross EDMNN at or above 2000 and at or below 240K, then on track 318° to FTTZZ, then on track 263° to cross GRALD at or above 8000, then on track 237° to XMASS, then on track 249° to cross AYYLE at or above 9000, thence....

TAKEOFF RUNWAY 10: Climb on heading 101° to 3000, then as assigned by ATC for RADAR vectors to cross AYYLE at or above 9000, thence....

TAKEOFF RUNWAY 24L: Climb on heading 238° to intercept course 270° to cross CNWAY at or below 6000, then on track 260° to cross AYYLE at or above 9000, thence....

TAKEOFF RUNWAY 24R: Climb on heading 238° to intercept course 269° to cross CNWAY at or below 6000, then on track 260° to cross AYYLE at or above 9000, thence....

TAKEOFF RUNWAY 28: Climb on heading 281° to 2200, then as assigned by ATC for RADAR vectors to cross AYYLE at or above 9000, thence....

...on track 276° to cross BRNIN at or below 14000, then on track 285° to GTLKE then on (transition). Maintain 14000, expect filed altitude ten minutes after departure.

ALPHE TRANSITION (GTLKE4.ALPHE)

BAGEL TRANSITION (GTLKE4.BAGEL)

DAIFE TRANSITION (GTLKE4.DAIFE)

YABRO TRANSITION (GTLKE4.YABRO)

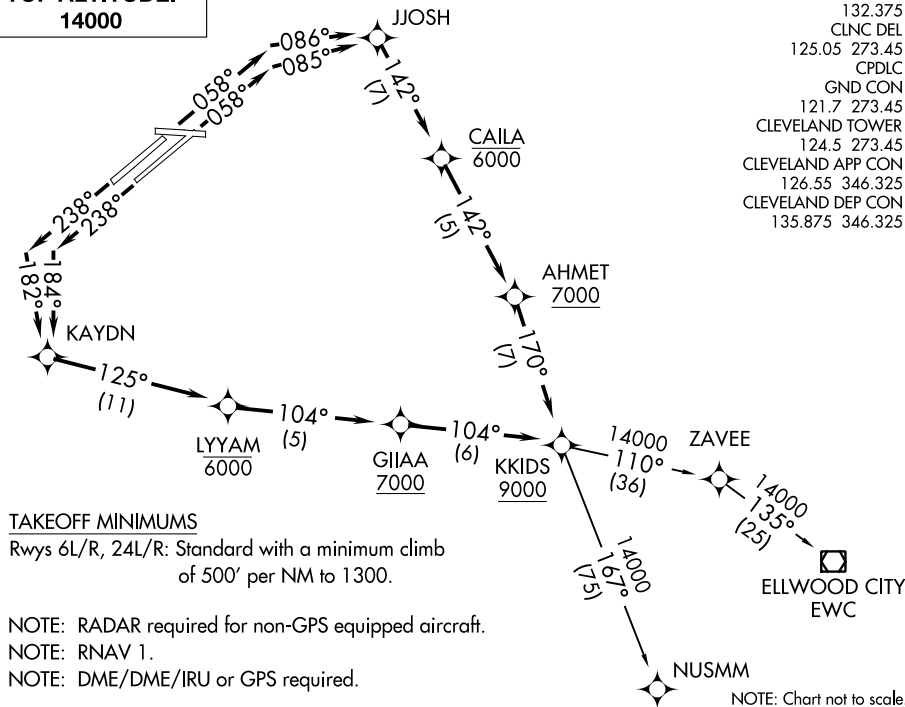
EC-2, 22 FEB 2024 to 21 MAR 2024

EC-2, 22 FEB 2024 to 21 MAR 2024

KKIDS ONE DEPARTURE (RNAV)

TOP ALTITUDE:
14000

D-ATIS 132.375
 CLNC DEL 125.05 273.45
 CPDLC
 GND CON 121.7 273.45
 CLEVELAND TOWER 124.5 273.45
 CLEVELAND APP CON 126.55 346.325
 CLEVELAND DEP CON 135.875 346.325



TAKEOFF MINIMUMS

Rwys 6L/R, 24L/R: Standard with a minimum climb of 500' per NM to 1300.

NOTE: RADAR required for non-GPS equipped aircraft.

NOTE: RNAV 1.

NOTE: DME/DME/IRU or GPS required.

NOTE: Chart not to scale.



DEPARTURE ROUTE DESCRIPTION

TAKEOFF RUNWAY 06L: Climb on heading 058° to intercept course 086° to JJOSH, then on track 142° to cross CAILA at or below 6000, then on track 142° to cross AHMET at or above 7000, then on track 170° to cross KKIDS at or above 9000 thence....

TAKEOFF RUNWAY 06R: Climb on heading 058° to intercept course 085° to JJOSH, then on track 142° to cross CAILA at or below 6000, then on track 142° to cross AHMET at or above 7000, then on track 170° to cross KKIDS at or above 9000 thence....

TAKEOFF RUNWAY 24L: Climb on heading 238° to intercept course 184° to KAYDN, then on track 125° to cross LYYAM at or below 6000, then on track 104° to cross GI1AA at or above 7000, then on track 104° to cross KKIDS at or above 9000, thence....

TAKEOFF RUNWAY 24R: Climb on heading 238° to intercept course 182° to KAYDN, then on track 125° to cross LYYAM at or below 6000, then on track 104° to cross GI1AA at or above 7000, then on track 104° to cross KKIDS at or above 9000, thence....

....on (Transition). Maintain 14000, expect filed altitude ten minutes after departure.

ELLWOOD CITY TRANSITION (KKIDS1.EWC)

NUSMM TRANSITION (KKIDS1.NUSMM)

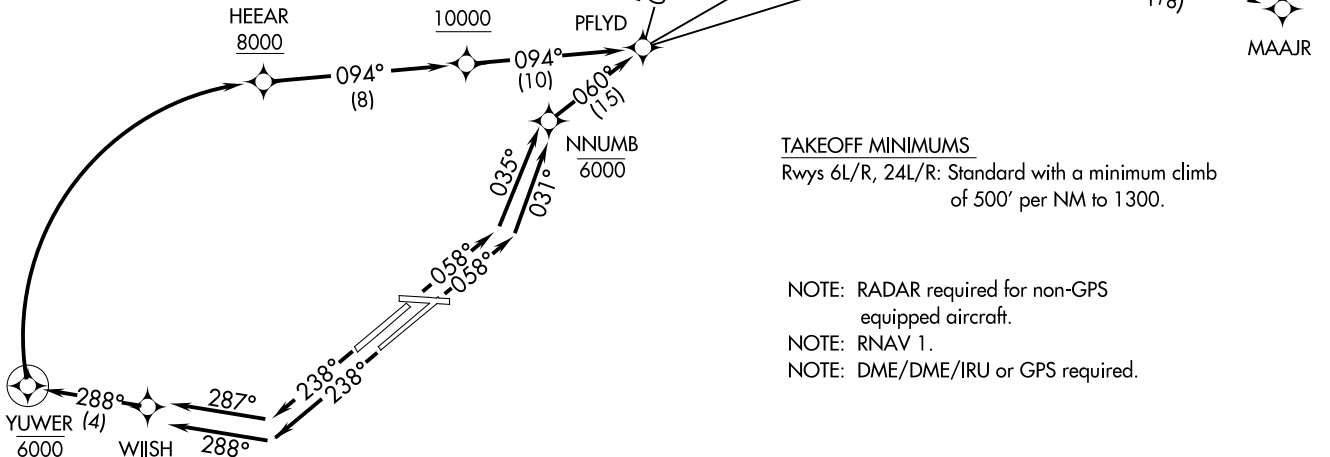
KKIDS ONE DEPARTURE (RNAV)

PFLYD ONE DEPARTURE (RNAV)
(PFLYD1.PFLYD) 19JUL18

TOP ALTITUDE:
14000

D-ATIS
132.375
CLNC DEL
125.05 273.45
CPDLC
GND CON
121.7 273.45
CLEVELAND TOWER
124.5 273.45
CLEVELAND APP CON
126.55 346.325
CLEVELAND DEP CON
128.25 346.325

CLEVELAND, OHIO
CLEVELAND-HOPKINS INTL (CLE)
(PFLYD1.PFLYD) 19JUL18



TAKEOFF MINIMUMS

Rwys 6L/R, 24L/R: Standard with a minimum climb of 500' per NM to 1300.

NOTE: RADAR required for non-GPS equipped aircraft.

NOTE: RNAV 1.

NOTE: DME/DME/IRU or GPS required.

(NARRATIVE ON FOLLOWING PAGE)

NOTE: Chart not to scale.

(PFLYD1.PFLYD) 22139
PFLYD ONE DEPARTURE (RNAV)

A-84 (FAA)

CLEVELAND-HOPKINS INTL (CLE)
CLEVELAND, OHIO

PFLYD ONE DEPARTURE (RNAV)



DEPARTURE ROUTE DESCRIPTION

TAKEOFF RUNWAY 06L: Climb on heading 058° to intercept course 035° to cross NNUMB at or below 6000, then on track 060° to PFLYD, thence....

TAKEOFF RUNWAY 06R: Climb on heading 058° to intercept course 031° to cross NNUMB at or below 6000, then on track 060° to PFLYD, thence....

TAKEOFF RUNWAY 24L: Climb on heading 238° to intercept course 288° to WIISH, then on track 288° to cross YUWER at or below 6000, then right turn direct to cross HEEAR at or above 8000, then on track 094° to cross SYYDD at or above 10000, then on track 094° to PFLYD, thence....

TAKEOFF RUNWAY 24R: Climb on heading 238° to intercept course 287° to WIISH, then on track 288° to cross YUWER at or below 6000, then right turn direct to cross HEEAR at or above 8000, then on track 094° to cross SYYDD at or above 10000, then on track 094° to PFLYD, thence....

....on (Transition). Maintain 14000, expect filed altitude ten minutes after departure.

DORET TRANSITION (PFLYD1.DORET)

DUUKR TRANSITION (PFLYD1.DUUKR)

JASEE TRANSITION (PFLYD1.JASEE)

MAAJR TRANSITION (PFLYD1.MAAJR)

PATRC TRANSITION (PFLYD1.PATRC)

EC-2, 22 FEB 2024 to 21 MAR 2024

EC-2, 22 FEB 2024 to 21 MAR 2024

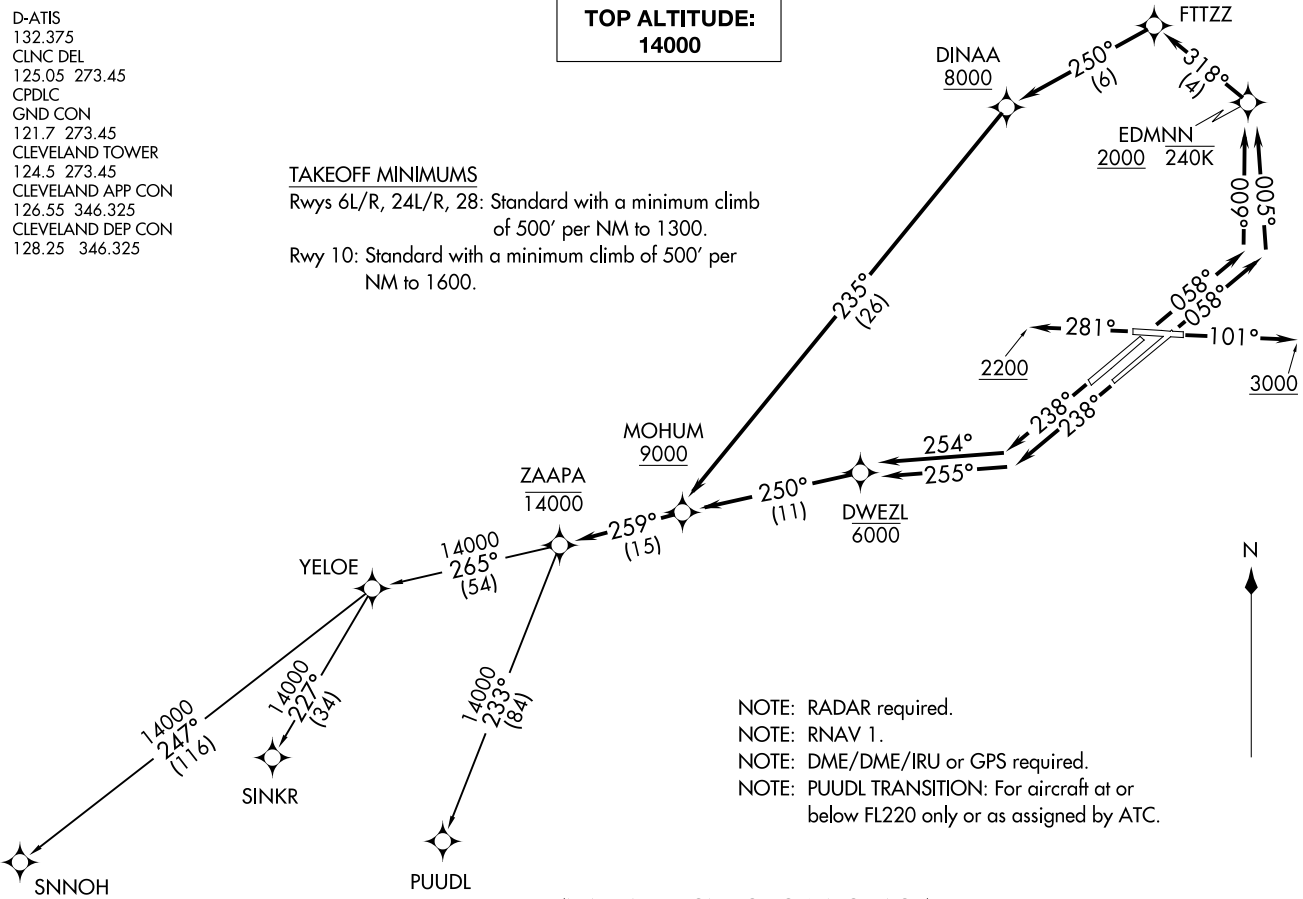
**TOP ALTITUDE:
14000**

D-ATIS
132.375
CLNC DEL
125.05 273.45
CPDLC
GND CON
121.7 273.45
CLEVELAND TOWER
124.5 273.45
CLEVELAND APP CON
126.55 346.325
CLEVELAND DEP CON
128.25 346.325

TAKEOFF MINIMUMS

Rwys 6L/R, 24L/R, 28: Standard with a minimum climb of 500' per NM to 1300.

Rwy 10: Standard with a minimum climb of 500' per NM to 1600.



- NOTE: RADAR required.
- NOTE: RNAV 1.
- NOTE: DME/DME/IRU or GPS required.
- NOTE: PUUDL TRANSITION: For aircraft at or below FL220 only or as assigned by ATC.

(NARRATIVE ON FOLLOWING PAGE)

NOTE: Chart not to scale.

ZAAPA FIVE DEPARTURE (RNAV)
(ZAAPAS ZAAPA) 26MAR20

CLEVELAND, OHIO
CLEVELAND-HOPKINS INTL (CLE)

(ZAAPAS ZAAPA) 22139
ZAAPA FIVE DEPARTURE (RNAV)

A-84 (FAA)
CLEVELAND-HOPKINS INTL (CLE)
CLEVELAND, OHIO

ZAAPA FIVE DEPARTURE (RNAV)



DEPARTURE ROUTE DESCRIPTION

TAKEOFF RUNWAY 6L: Climb on heading 058° to intercept course 009° to cross EDMNN at or above 2000 and at or below 240K, then on track 318° to FTTZZ, then on track 250° to cross DINAA at or above 8000, then on track 235° to cross MOHUM at or above 9000, thence....

TAKEOFF RUNWAY 6R: Climb on heading 058° to intercept course 005° to cross EDMNN at or above 2000 and at or below 240K, then on track 318° to FTTZZ, then on track 250° to cross DINAA at or above 8000, then on track 235° to cross MOHUM at or above 9000, thence....

TAKEOFF RUNWAY 10: Climb on heading 101° to 3000, then as assigned by ATC for RADAR vectors to cross MOHUM at or above 9000, thence....

TAKEOFF RUNWAY 24L: Climb on heading 238° to intercept course 255° to cross DWEZL at or below 6000, then on track 250° to cross MOHUM at or above 9000, thence....

TAKEOFF RUNWAY 24R: Climb on heading 238° to intercept course 254° to cross DWEZL at or below 6000, then on track 250° to cross MOHUM at or above 9000, thence....

TAKEOFF RUNWAY 28: Climb on heading 281° to 2200, then as assigned by ATC for RADAR vectors to cross MOHUM at or above 9000, thence....

....on track 259° to cross ZAAPA at or below 14000, then on (transition). Maintain 14000 or as assigned by ATC, expect filed altitude ten minutes after departure.

PUUDL TRANSITION (ZAAPA5.PUUDL)

SINKR TRANSITION (ZAAPA5.SINKR)

SNNOH TRANSITION (ZAAPA5.SNNOH)

EC-2, 22 FEB 2024 to 21 MAR 2024

EC-2, 22 FEB 2024 to 21 MAR 2024