

WAAS CH <b>87030</b> W13A	APP CRS <b>135°</b>	Rwy Idg TDZE <b>1203</b> Apt Elev <b>1204</b>	<b>5000</b>
---------------------------------	------------------------	---	-------------

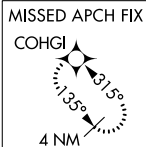
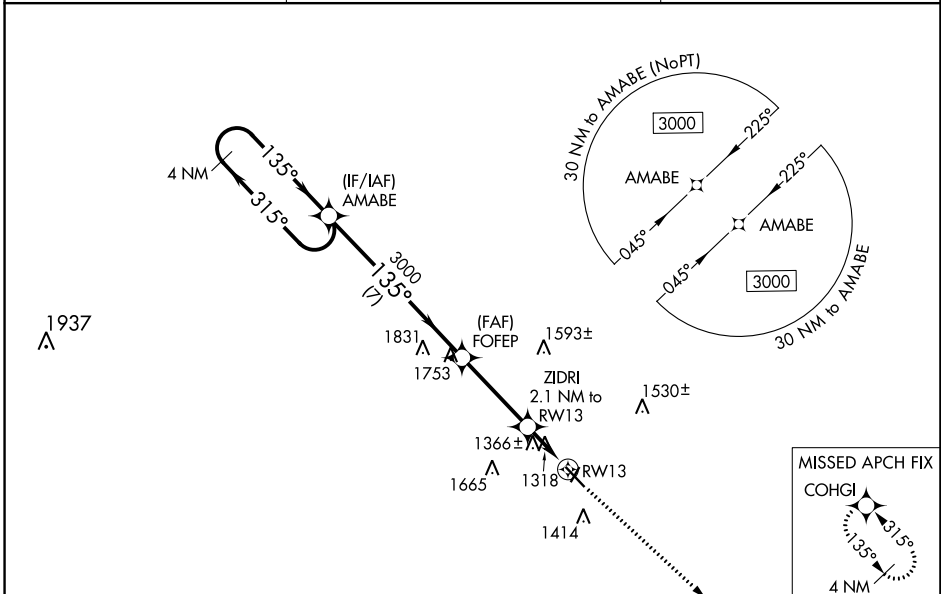
# RNAV (GPS) RWY 13

ARTHUR N NEU (CIN)

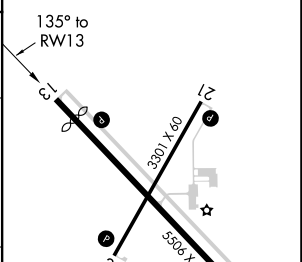
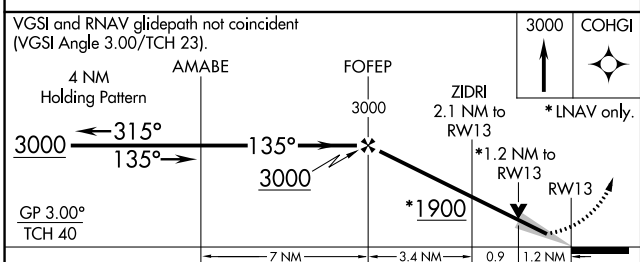
**⚠** For uncompensated Baro-VNAV systems, LNAV/VNAV NA below -17°C (2°F) or above 54°C (130°F). DME/DME RNP-0.3 NA. Baro-VNAV and VDP NA when using Audubon altimeter setting. When local altimeter setting not received, use Audubon altimeter setting; increase LPV DA to 1515 feet; increase LNAV/VNAV DA to 1669 feet and all visibilities ¼ SM; increase all MDAs 80 feet and visibility Cat C ¼ SM.

MISSED APPROACH: Climb to 3000 direct COHGI and hold.

AWOS-3 <b>118.025</b>	MINNEAPOLIS CENTER <b>134.0 288.3</b>	UNICOM <b>122.8 (CTAF) 0</b>
--------------------------	--	---------------------------------



ELEV 1204	TDZE 1203
-----------	-----------



CATEGORY	A	B	C	D
LPV DA	1453-1	250 (300-1)		NA
LNAV/VNAV DA	1607-1 $\frac{3}{8}$	404 (500-1 $\frac{3}{8}$ )		NA
LNAV MDA	1620-1	417 (500-1)	1620-1 $\frac{1}{8}$ 417 (500-1 $\frac{1}{8}$ )	NA
CIRCLING	1740-1	536 (600-1)	1980-2 $\frac{1}{4}$ 776 (800-2 $\frac{1}{4}$ )	NA

MIRL Rwy 13-31 and 3-21  
REIL Rwy 3, 13, 21 and 31

NC-3, 22 FEB 2024 to 21 MAR 2024

NC-3, 22 FEB 2024 to 21 MAR 2024

WAAS CH <b>49130</b> <b>W31A</b>	APP CRS <b>315°</b>	Rwy Idg TDZE <b>1203</b> Apt Elev <b>1204</b>
--	------------------------	---

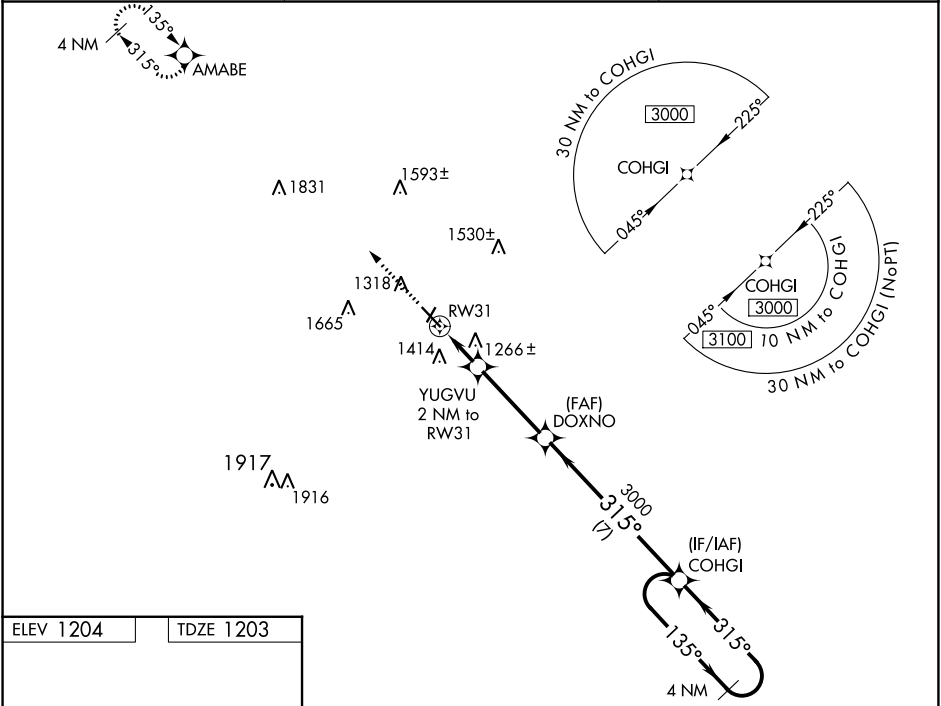
# RNAV (GPS) RWY 31

ARTHUR N NEU (CIN)

**⚠** For uncompensated Baro-VNAV systems, LNAV/VNAV NA below -17°C (2°F) or above 54°C (130°F). DME/DME RNP-0.3 NA. Baro-VNAV and VDP NA when using Audubon altimeter setting. When local altimeter setting not received, use Audubon altimeter setting: increase LPV DA to 1515 feet; increase LNAV/VNAV DA to 1515 feet and increase all MDAs 80 feet and visibility Cat C ¼ SM.

**MISSED APPROACH:** Climb to 3000 direct AMABE and hold.

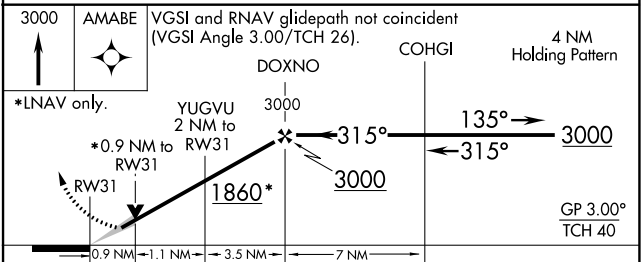
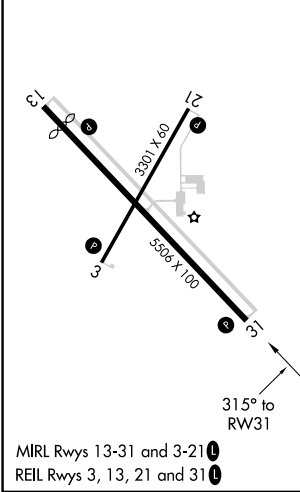
AWOS-3 <b>118.025</b>	MINNEAPOLIS CENTER <b>134.0 288.3</b>	UNICOM <b>122.8 (CTAF) 0</b>
--------------------------	--	---------------------------------



NC-3, 22 FEB 2024 to 21 MAR 2024

NC-3, 22 FEB 2024 to 21 MAR 2024

ELEV 1204	TDZE 1203
-----------	-----------



CATEGORY	A	B	C	D
LPV DA	1453-1	250 (300-1)		NA
LNAV/VNAV DA	1453-1	250 (300-1)		NA
LNAV MDA	1520-1	317 (400-1)		NA
CIRCLING	1740-1	536 (600-1)	1980-2¼ 776 (800-2¼)	NA