

APP CRS	Rwy Idg	<b>3196</b>
<b>182°</b>	TDZE	<b>313</b>
	Apt Elev	<b>313</b>

# RNAV (GPS) RWY 18

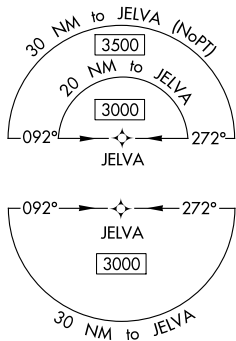
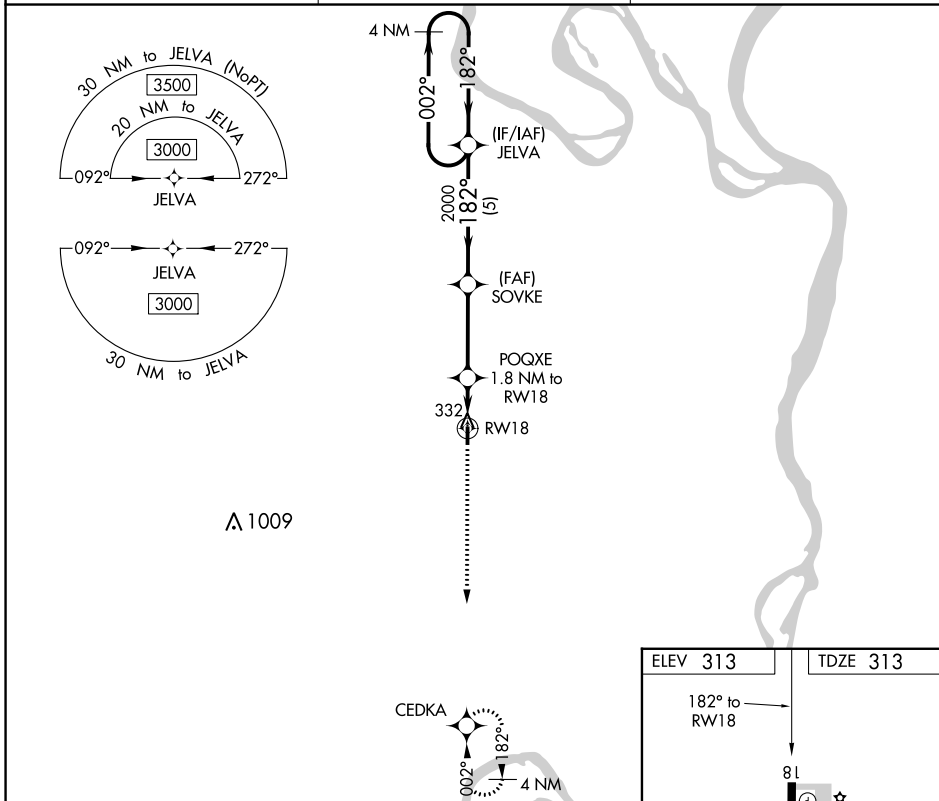
MISSISSIPPI COUNTY (CHQ)

RNP APCH-GPS

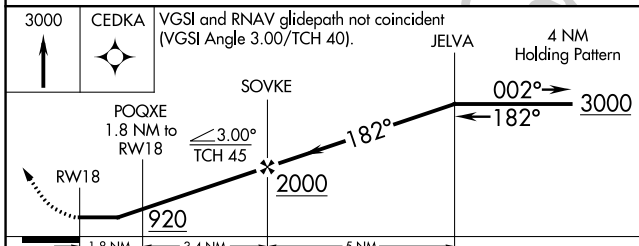
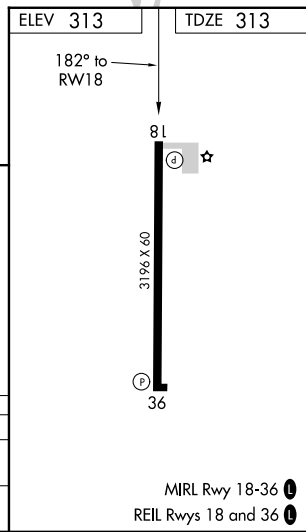
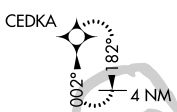
Procedure NA at night. Use Sikeston altimeter setting, if not received use Cairo altimeter setting and increase all MDA 20 feet. Helicopter visibility reduction below 1 SM NA.

MISSED APPROACH: Climb to 3000 direct CEDKA and hold.

SIK AWOS-3 <b>119.175</b>	MEMPHIS CENTER <b>133.65 292.15</b>	CTAF <b>122.9</b>
------------------------------	----------------------------------------	----------------------



△ 1009



CATEGORY	A	B	C	D
LNVA MDA	800-1	487 (500-1)		NA
CIRCLING	800-1 487 (500-1)	860-1 547 (600-1)		NA

NC-3, 22 FEB 2024 to 21 MAR 2024

NC-3, 22 FEB 2024 to 21 MAR 2024

APP CRS	Rwy Idg	<b>3196</b>
<b>002°</b>	TDZE	<b>313</b>
	Apt Elev	<b>313</b>

# RNAV (GPS) RWY 36

MISSISSIPPI COUNTY (CHQ)

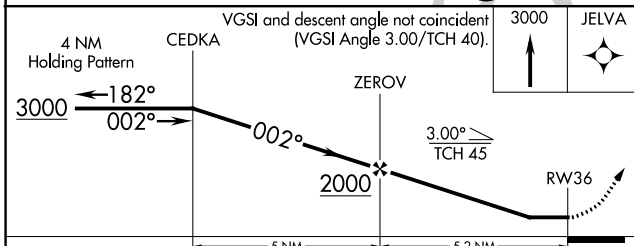
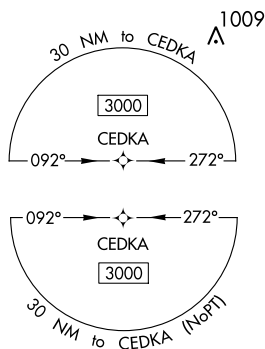
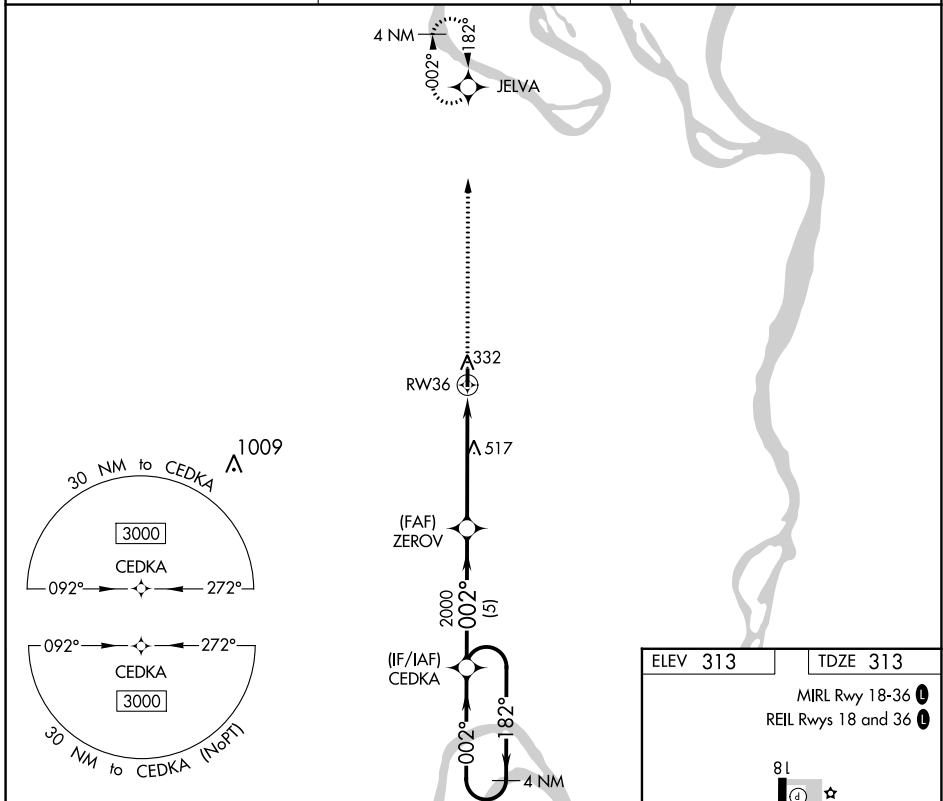
**NA** DME/DME RNP-0.3 NA. Procedure NA at night. Use Sikeston altimeter setting, when not received use Cairo, IL altimeter setting and increase all MDA 20 feet. Helicopter visibility reduction below 1 SM NA.

**MISSED APPROACH:** Climb to 3000 direct JELVA and hold.

SIK AWOS-3  
**119.175**

MEMPHIS CENTER  
**133.65 292.15**

CTAF  
**122.9**



ELEV 313	TDZE 313
MIRL Rwy 18-36	
REIL Rwys 18 and 36	

CATEGORY	A	B	C	D
LNVA MDA	800-1	487 (500-1)		NA
CIRCLING	800-1 487 (500-1)	860-1 547 (600-1)		NA

NC-3, 22 FEB 2024 to 21 MAR 2024

NC-3, 22 FEB 2024 to 21 MAR 2024