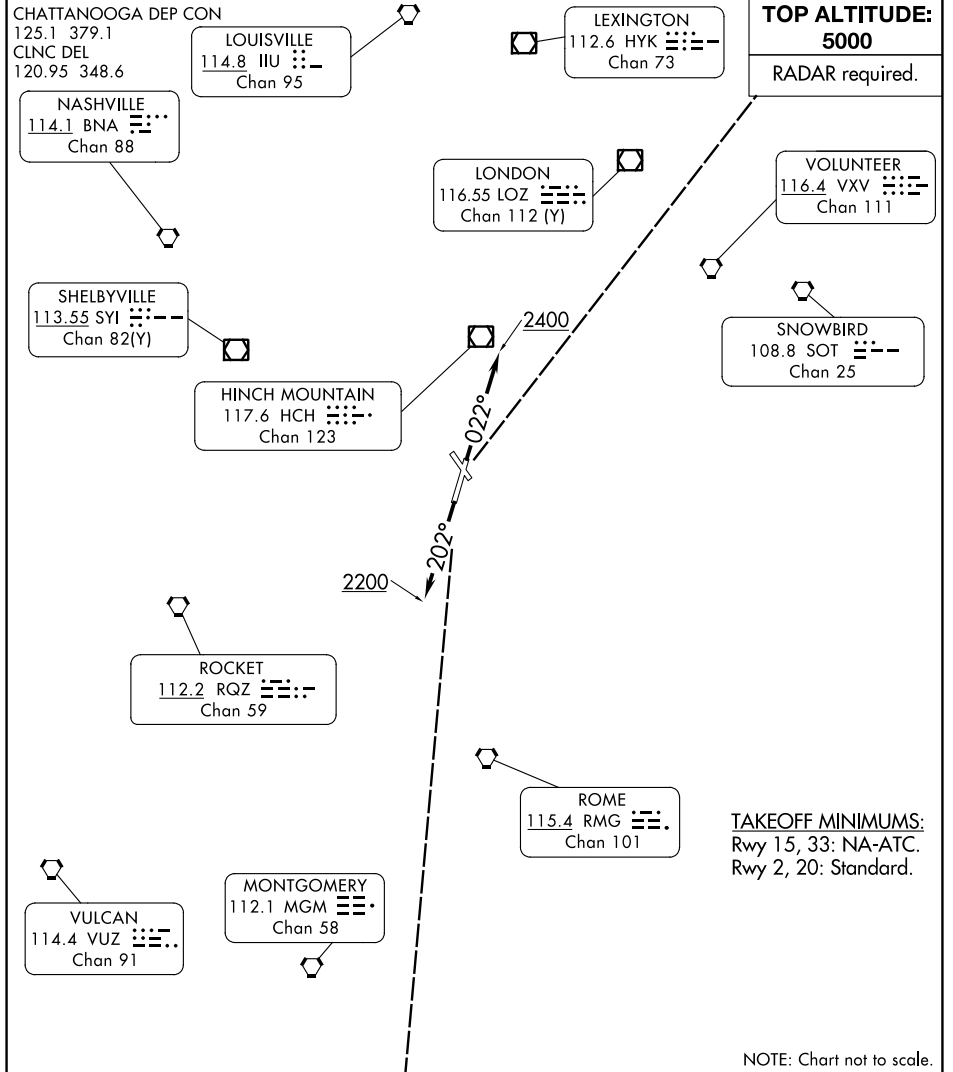


(CHA8.CHA) 23334

AL-79 (FAA)

LOVELL FLD (CHA)
CHATTANOOGA, TENNESSEE

CHATTANOOGA EIGHT DEPARTURE



SE-1, 22 FEB 2024 to 21 MAR 2024

SE-1, 22 FEB 2024 to 21 MAR 2024



DEPARTURE ROUTE DESCRIPTION

TAKEOFF RUNWAY 2: Climb on heading 022° to 2400, thence....

TAKEOFF RUNWAY 20: Climb heading 202° to 2200, thence....

...expect vectors to join assigned route. Maintain 5000 or assigned lower altitude. Expect further clearance to filed altitude ten minutes after departure.

CHATTANOOGA EIGHT DEPARTURE

CHATTANOOGA, TENNESSEE
LOVELL FLD (CHA)

(CHA8.CHA) 29DEC22