

WAAS CH 69403 W15A	APP CRS 148°	Rwy Idg TDZE Apt Elev	4000 361 367
---------------------------------	------------------------	-----------------------------	---

RNAV (GPS) RWY 15

COULTER FLD (CFD)

RNP APCH.

Baro-VNAV NA. Rwy 15 helicopter visibility reduction below 3/4 SM NA.
 Use College Station altimeter setting; when not received, use Caldwell altimeter setting and increase all DA 31 feet and all MDA 40 feet.

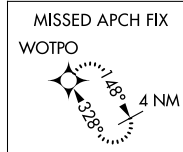
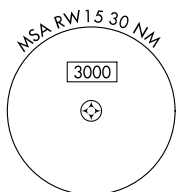
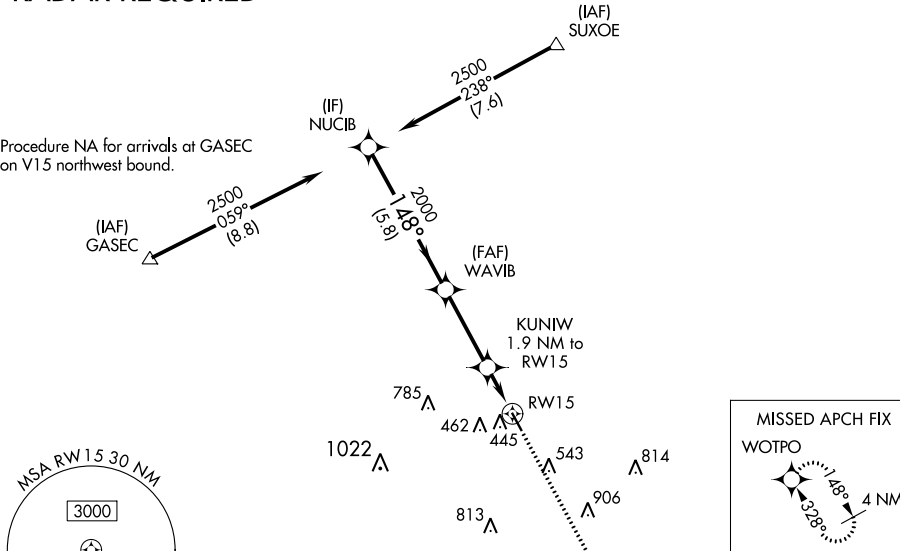
MISSED APPROACH: Climb to 2000 direct WOTPO and hold.

AWOS-3PT 125.975	CLL ASOS 126.85	HOUSTON APP CON 134.3 360.85	UNICOM 123.0 (CTAF) 0
----------------------------	---------------------------	--	---------------------------------

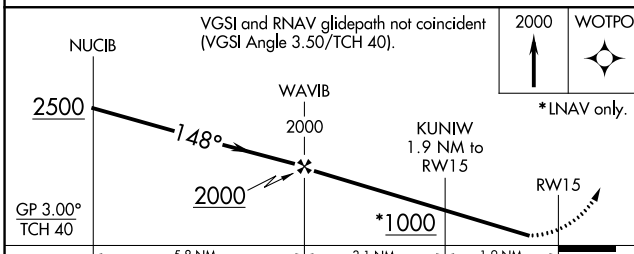
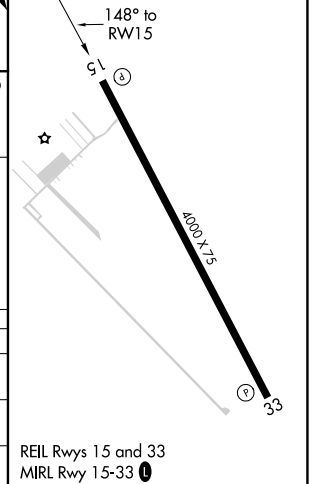
RADAR REQUIRED

Procedure NA for arrivals at SUXOE on V369 northwest bound.

Procedure NA for arrivals at GASEC on V15 northwest bound.



ELEV 367	TDZE 361
----------	----------



CATEGORY	A	B	C	D
LPV DA	636-1	275 (300-1)		NA
LNAV/VNAV DA	636-1	275 (300-1)		NA
LNAV MDA	720-1	359 (400-1)		NA

REIL Rwy 15 and 33
MIRL Rwy 15-33 0

SC-5, 22 FEB 2024 to 21 MAR 2024

SC-5, 22 FEB 2024 to 21 MAR 2024

WAAS CH 70603 W33A	APP CRS 328°	Rwy Idg TDZE Apt Elev	4000 367 367
---------------------------------	------------------------	-----------------------------	---

RNAV (GPS) RWY 33

COULTER FLD (CFD)

RNP APCH.
 ▽ NA Baro-VNAV NA. Use College Station altimeter setting; when not received, use Caldwell altimeter setting and increase all DA 31 feet and all MDA 40 feet.

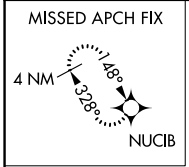
MISSED APPROACH: Climb to 2500 direct NUCIB and hold.

AWOS-3PT
125.975

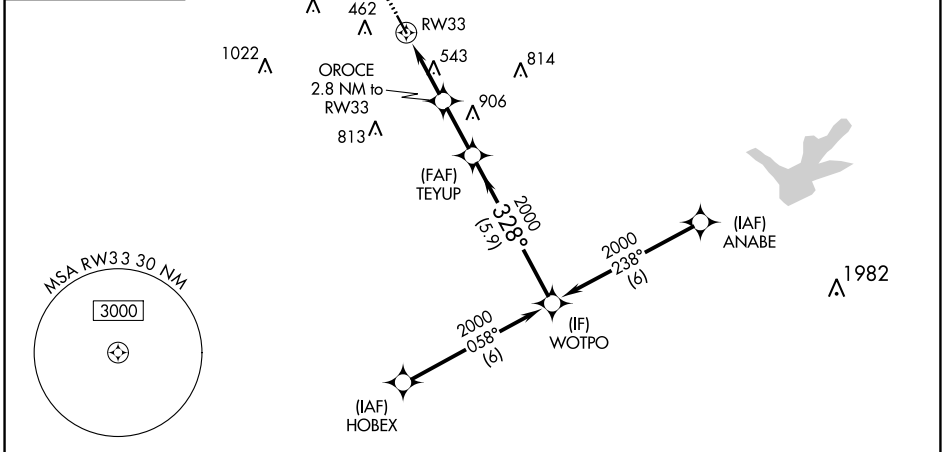
CLL ASOS
126.85

HOUSTON APP CON
134.3 360.85

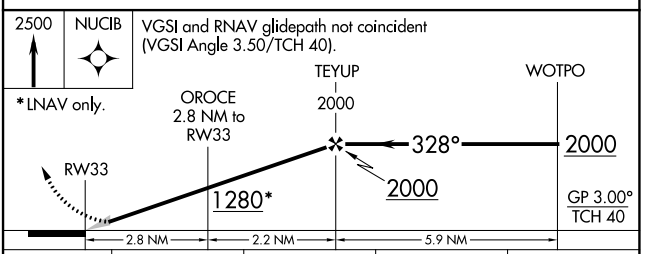
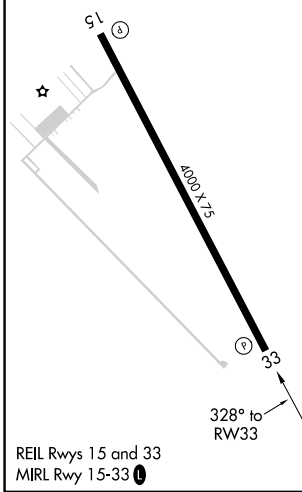
UNICOM
123.0 (CTAF) 0



RADAR REQUIRED



ELEV	367	TDZE	367
------	-----	------	-----



CATEGORY	A	B	C	D
LPV DA	642-1	275 (300-1)	NA	
LNAV/VNAV DA	642-1	275 (300-1)	NA	
LNAV MDA	880-1	513 (600-1)	NA	

SC-5, 22 FEB 2024 to 21 MAR 2024

SC-5, 22 FEB 2024 to 21 MAR 2024