

WAAS CH <b>63107</b> W17A	APP CRS <b>175°</b>	Rwy Idg TDZE Apt Elev	<b>4201</b> <b>1500</b> <b>1500</b>
---------------------------------	------------------------	-----------------------------	---

# RNAV (GPS) RWY 17

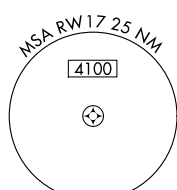
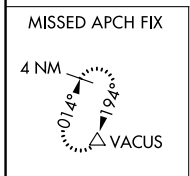
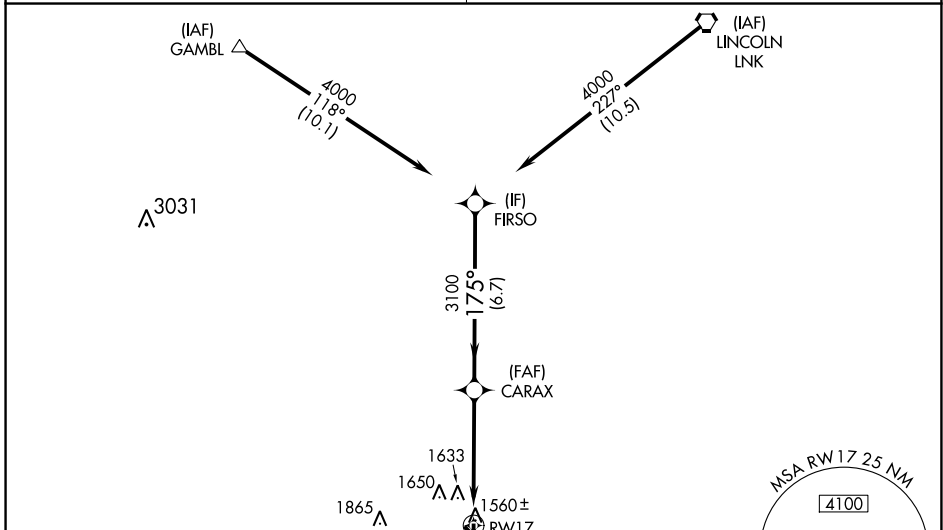
CRETE MUNI (CEK)

**NA** Baro-VNAV NA. DME/DME RNP-0.3 NA. Visibility reduction by helicopters NA. Use Lincoln altimeter setting; when not received, use Beatrice altimeter setting.

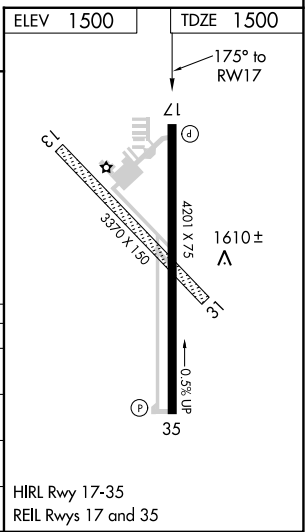
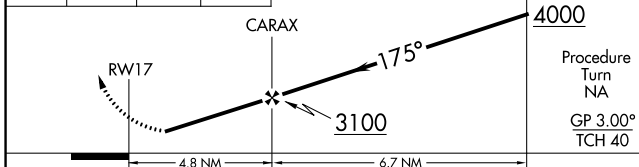
**MISSED APPROACH:** Climb to 4000 direct CIBAR and via 181° track to VACUS and hold, continue climb-in-hold to 4000.

OMAHA APP CON **124.0 270.3**

UNICOM **122.8** (CTAF)



4000	CIBAR	tr 181°	VACUS	VGSI and RNAV glidepath not coincident (VGSI Angle 3.00/TCH 40).	FIRSO
------	-------	---------	-------	--	-------



CATEGORY	A	B	C	D
LPV DA	1875-1¼	375 (400-1¼)		NA
RNAV/VNAV DA	2051-2	551 (600-2)		NA
RNAV MDA	2080-1	580 (600-1)		NA
CIRCLING	2140-1	640 (700-1)		NA

HIRL Rwy 17-35  
REIL Rwy 17 and 35

NC-2, 22 FEB 2024 to 21 MAR 2024

NC-2, 22 FEB 2024 to 21 MAR 2024

WAAS CH <b>77708</b> <b>W35A</b>	APP CRS <b>355°</b>	Rwy Idg TDZE <b>1498</b> Apt Elev <b>1500</b>
--	------------------------	---

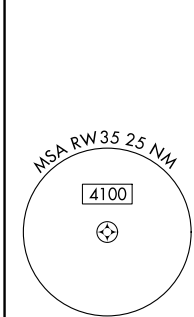
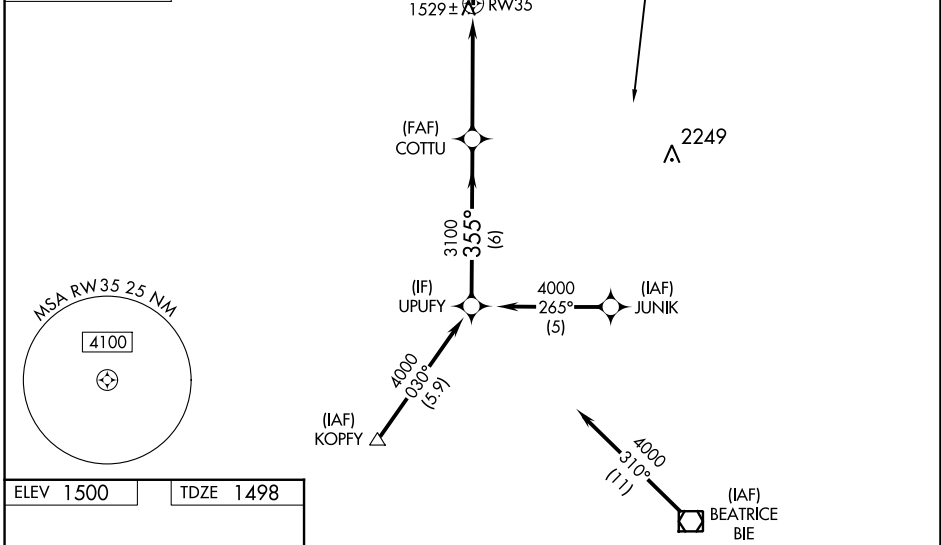
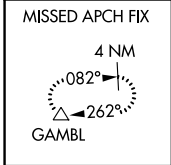
# RNAV (GPS) RWY 35

CRETE MUNI (CEK)

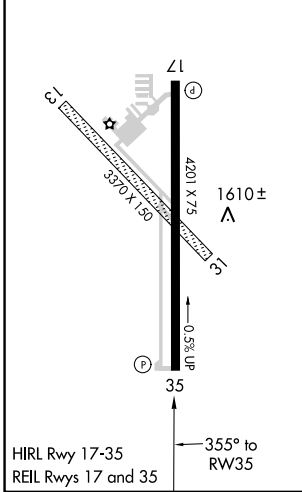
**NA** Baro-VNAV NA. DME/DME RNP-0.3 NA. Use Lincoln altimeter setting; when not received, use Beatrice altimeter setting. Visibility reduction by helicopters NA.

**MISSED APPROACH:** Climb to 4000 direct PIYB and via 327° track to GAMBL and hold.

OMAHA APP CON <b>124.0 270.3</b>	UNICOM <b>122.8 (CTAF)</b>
-------------------------------------	-------------------------------

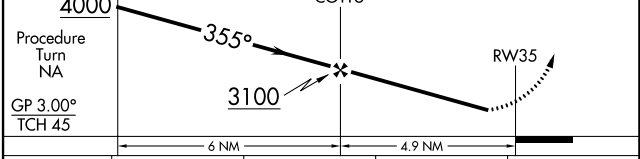


ELEV 1500	TDZE 1498
-----------	-----------



VGSI and RNAV glidepath not coincident (VGSI Angle 3.00/TCH 40).

4000	PIYB	GAMBL
↑	✦	△
	tr 327°	



CATEGORY	A	B	C	D
LPV DA	1824-1¼	326 (400-1¼)		NA
LNAV/VNAV DA	1855-1¼	357 (400-1¼)		NA
LNAV MDA	2040-1	542 (600-1)		NA
CIRCLING	2140-1	640 (700-1)		NA

NC-2, 22 FEB 2024 to 21 MAR 2024

NC-2, 22 FEB 2024 to 21 MAR 2024

VORTAC LNK <b>116.1</b> Chan <b>108</b>	APP CRS <b>196°</b>	Rwy Idg <b>4201</b> TDZE <b>1500</b> Apt Elev <b>1500</b>
---	------------------------	---

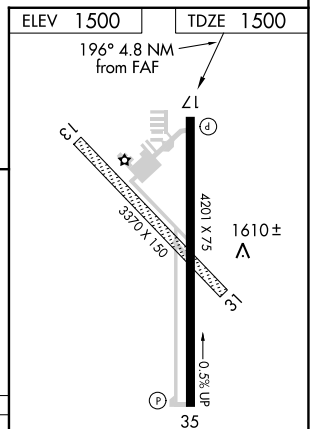
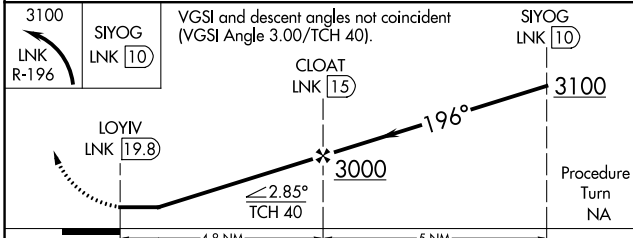
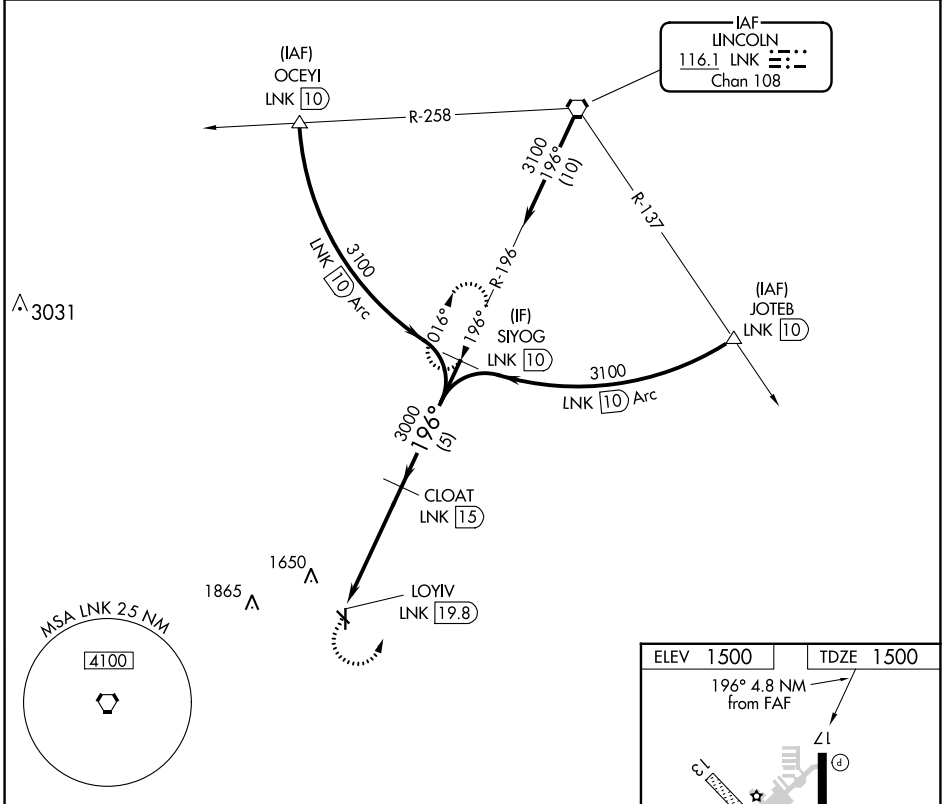
# VOR/DME RWY 17

CRETE MUNI (CEK)

**⚠** **NA** Rwy 17 Straight-in and Circling minimums NA at night. Use Lincoln altimeter setting; when not received, use Beateira altimeter setting. Helicopter visibility reduction below 1 SM NA.

MISSED APPROACH: Climbing left turn to 3100 via LNK VORTAC R-196 to SIYOG/10 DME and hold.

OMAHA APP CON <b>124.0 270.3</b>	UNICOM <b>122.8 (CTAF)</b>
-------------------------------------	-------------------------------



CATEGORY	A	B	C	D
S-17	2080-1	580 (600-1)		NA
CIRCLING	2140-1	640 (700-1)		NA

HIRL Rwy 17-35  
REIL Rwy 17 and 35

NC-2, 22 FEB 2024 to 21 MAR 2024

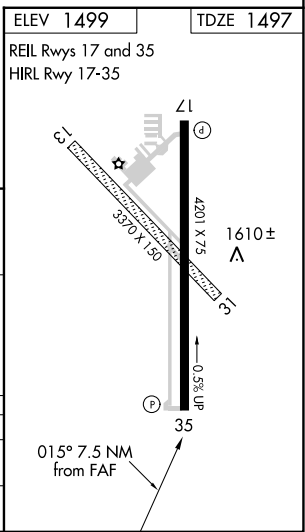
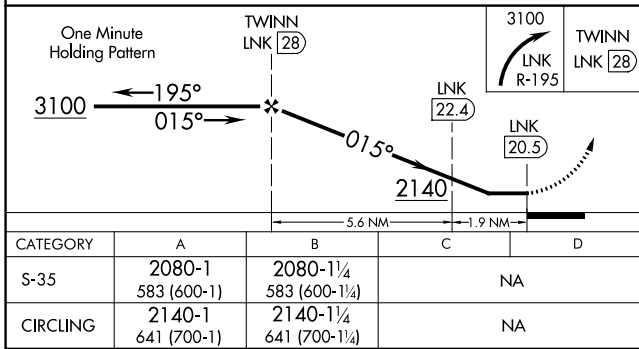
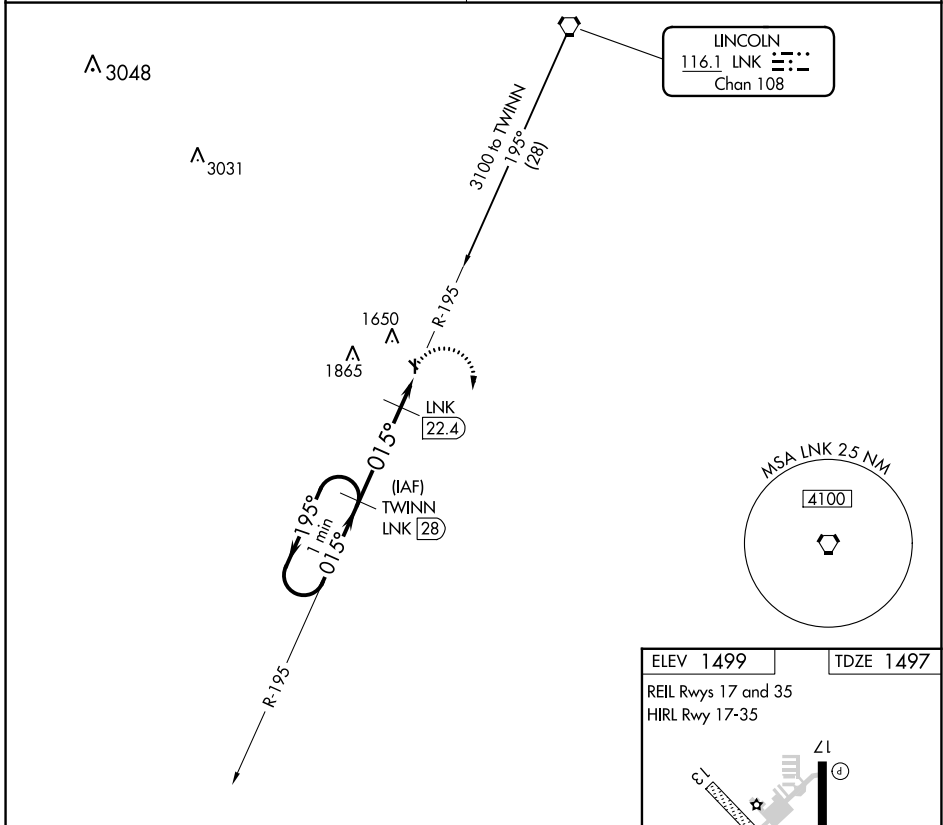
NC-2, 22 FEB 2024 to 21 MAR 2024

VORTAC LNK <b>116.1</b> Chan <b>108</b>	APP CRS <b>015°</b>	Rwy Idg TDZE Apt Elev	<b>4201</b> <b>1497</b> <b>1499</b>
---	------------------------	-----------------------------	---

# VOR/DME RWY 35

CRETE MUNI (CEK)

<p><b>NA</b> Use Lincoln altimeter setting; when not received, use Beatrice altimeter setting. Visibility reduction by helicopters NA.</p>	<p>MISSED APPROACH: Climbing right turn to 3100 via LNK R-195 to TWINN/LNK 28 DME and hold.</p>
<p>OMAHA APP CON <b>124.0 270.3</b></p>	<p>UNICOM <b>122.8 (CTAF)</b></p>



NC-2, 22 FEB 2024 to 21 MAR 2024

NC-2, 22 FEB 2024 to 21 MAR 2024