

LOC/DME I-CBF 111.35 Chan 50 (Y)	APP CRS 357°	Rwy Idg TDZE Apt Elev	5500 1245 1245
--	------------------------	-----------------------------	---

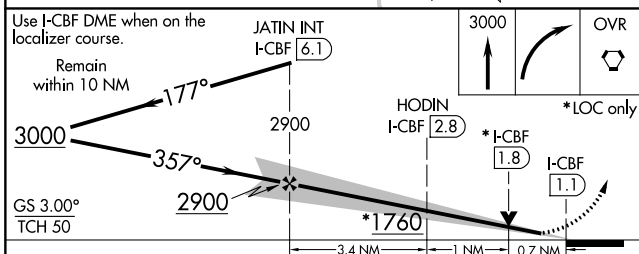
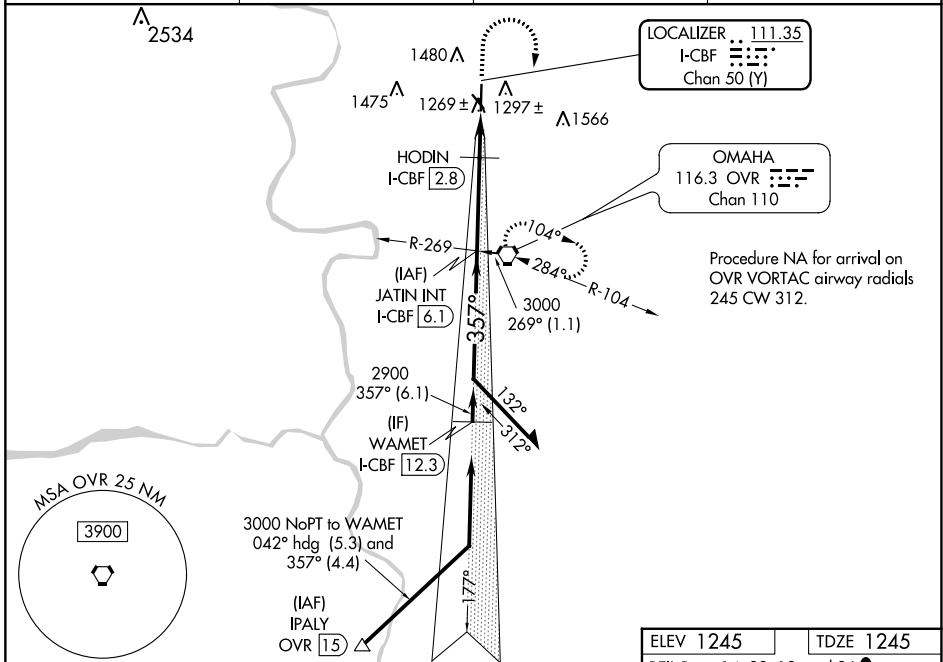
ILS or LOC RWY 36

COUNCIL BLUFFS MUNI (CBF)

V VDP NA with Eppley Airfield altimeter setting. When local altimeter setting not received, use Eppley Airfield altimeter setting and increase S-ILS 36 DA to 1498 feet, and all MDA 60 feet and increase S-LOC 36 Cats C and D and Circling Cat C and D visibility ¼ SM. HODIN fix minimums: increase Circling Cat C and D visibility ¼ SM.

MISSED APPROACH: Climb to 3000 then right turn direct OVR VORTAC and hold.

AWOS-3 126.575	OMAHA APP CON 124.5 263.0	CLNC DEL 127.675	UNICOM 122.725 (CTAF)
--------------------------	-------------------------------------	----------------------------	---------------------------------



ELEV 1245	TDZE 1245
REIL Rwys 14, 32, 18, and 36	
MIRL Rwy 14-32	
HIRL Rwy 18-36	
81	
5600 X 100	
3650 X 60	
36	
357°	
FAF to MAP 5.1 NM	
Knots	60 90 120 150 180
Min:Sec	5:06 3:24 2:33 2:02 1:42

CATEGORY	A	B	C	D
S-ILS 36		1445-¾	200 (200-¾)	
S-LOC 36	1760-1	515 (600-1)	1760-1⅜	515 (600-1⅜)
C CIRCLING	1780-1 535 (600-1)	1840-1 595 (600-1)	1840-1½ 595 (600-1½)	1880-2 635 (700-2)
HODIN FIX MINIMUMS				
S-LOC 36	1520-1	275 (300-1)		
C CIRCLING	1780-1 535 (600-1)	1840-1 595 (600-1)	1840-1½ 595 (600-1½)	1880-2 635 (700-2)

NC-3, 22 FEB 2024 to 21 MAR 2024

NC-3, 22 FEB 2024 to 21 MAR 2024

WAAS CH 45841 W14A	APP CRS 136°	Rwy Idg TDZE Apt Elev	3650 1245 1245
--	------------------------	-----------------------------	---

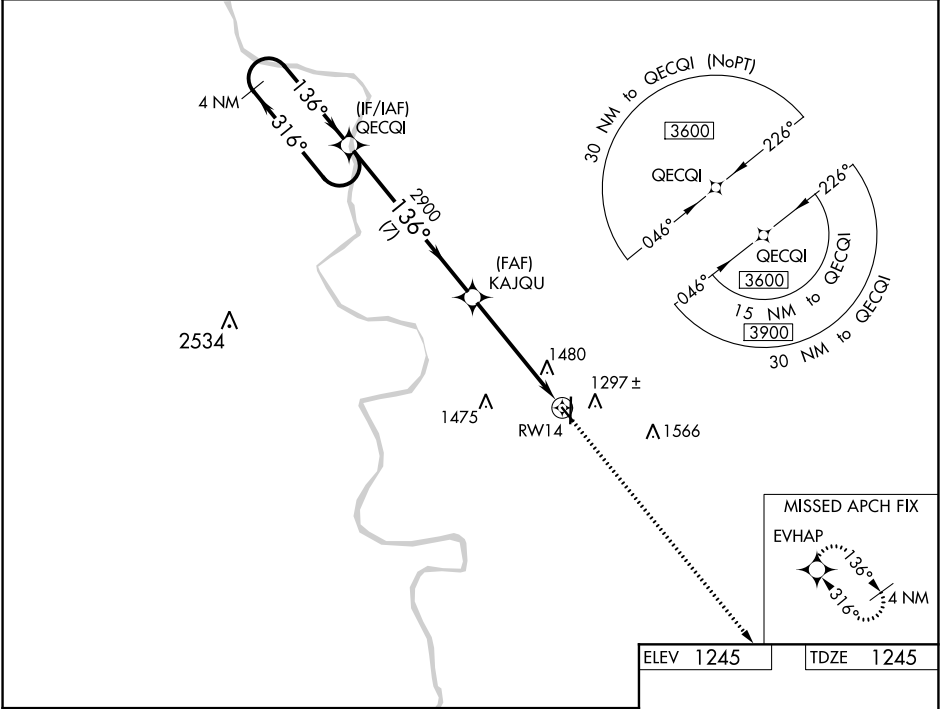
RNAV (GPS) RWY 14

COUNCIL BLUFFS MUNI (CBF)

For uncompensated Baro-VNAV systems, LNAV/VNAV NA below -18°C (0°F) or above 54°C (130°F). Rwy 14 helicopter visibility reduction below 3/4 SM NA. DME/DME RNP-0.3 NA.

MISSED APPROACH: Climb to 3900 direct EVHAP and hold.

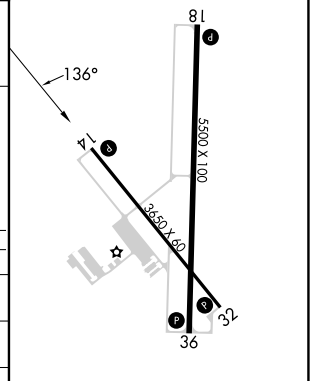
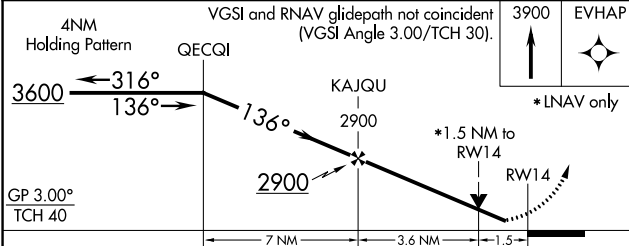
AWOS-3 126.575	OMAHA APP CON 124.5 263.0	CLNC DEL 127.675	UNICOM 122.725 (CTAF) 0
--------------------------	-------------------------------------	----------------------------	--



NC-3, 22 FEB 2024 to 21 MAR 2024

NC-3, 22 FEB 2024 to 21 MAR 2024

ELEV 1245	TDZE 1245
-----------	-----------



CATEGORY	A	B	C	D
LPV DA		1495-3/4	250 (300-3/4)	
LNAV/VNAV DA		1816-1 1/8	571 (600-1 1/8)	
LNAV MDA	1740-1	495 (500-1)	1740-1 3/8	495 (500-1 3/8)
CIRCLING	1780-1	535 (600-1)	1780-1 1/2	1880-2 635 (700-2)

MIRL Rwy 14-32 **0**
 HIRL Rwy 18-36 **0**
 REL Rwy 14, 32, 18, and 36 **0**

WAAS CH 42806 W18A	APP CRS 177°	Rwy Idg TDZE Apt Elev	5500 1241 1245
--	------------------------	-----------------------------	---

RNAV (GPS) RWY 18

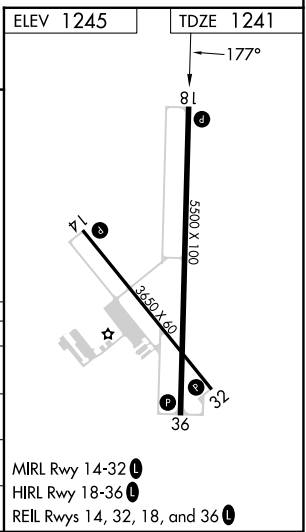
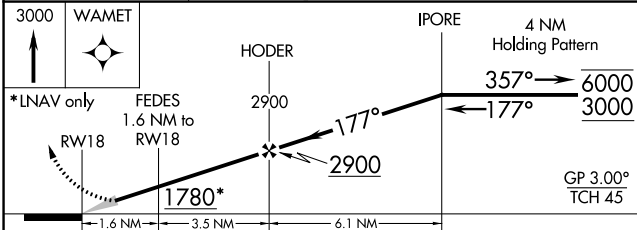
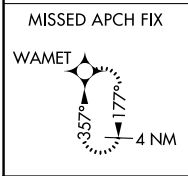
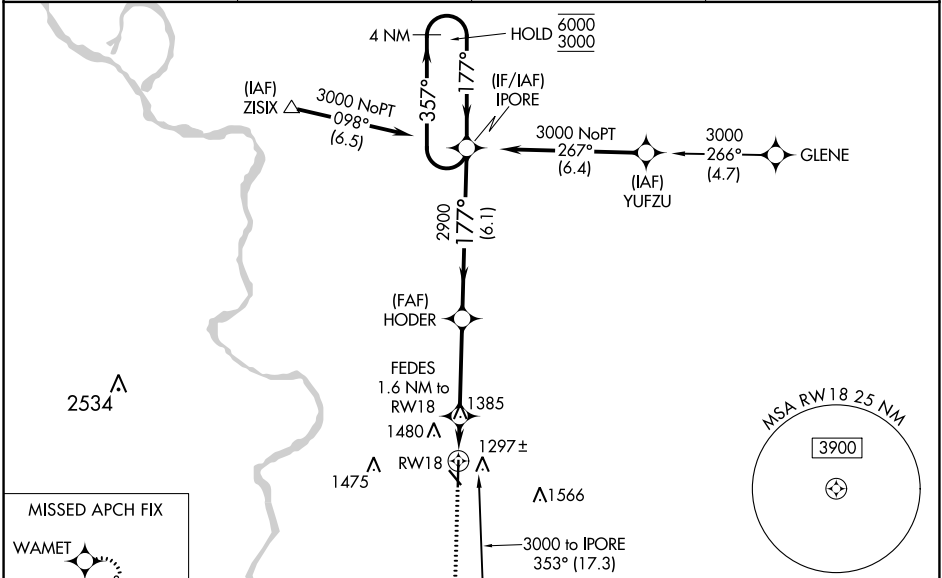
COUNCIL BLUFFS MUNI (CBF)

RNP APCH.

⚠ Baro-VNAV NA when using Eppley Airfield altimeter setting. For uncompensated Baro-VNAV systems, LNAV/VNAV NA below -17°C or above 54°C. When local altimeter setting not received, use Eppley Airfield altimeter setting and increase LPV DA to 1544 feet, LNAV/VNAV DA to 1750 feet and all MDA 60 feet and increase LPV all Cats visibility 1/8 SM, LNAV Cat C and D and Circling Cat C and D visibility 1/4 SM.

MISSED APPROACH: Climb to 3000 direct WAMET and hold.

AWOS-3 126.575	OMAHA APP CON 124.5 263.0	CLNC DEL 127.675	UNICOM 122.725 (CTAF) 📞
--------------------------	-------------------------------------	----------------------------	--



CATEGORY	A	B	C	D
LPV DA		1491-3/4	250 (300-3/4)	
LNAV/VNAV DA		1697-13/8	456 (500-13/8)	
LNAV MDA	1640-1	399 (400-1)	1640-1 1/8	399 (400-1 1/8)
📞 CIRCLING	1780-1 535 (600-1)	1840-1 595 (600-1)	1840-1 1/2 595 (600-1 1/2)	1880-2 635 (700-2)

NC-3, 22 FEB 2024 to 21 MAR 2024

NC-3, 22 FEB 2024 to 21 MAR 2024

WAAS CH 90441 W32A	APP CRS 316°	Rwy Idg TDZE Apt Elev	3650 1245 1245
--	------------------------	-----------------------------	---

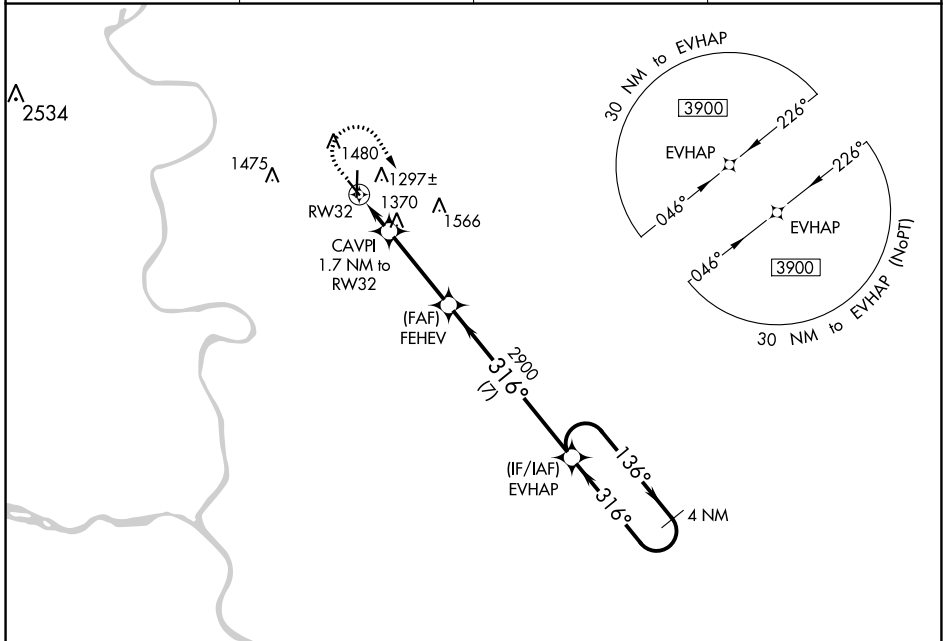
RNAV (GPS) RWY 32

COUNCIL BLUFFS MUNI (CBF)

For uncompensated Baro-VNAV systems, LNAV/VNAV NA below -18°C (0°F) or above 54°C (130°F).
DME/DME RNP- 0.3 NA.

MISSED APPROACH: Climb to 2000 then climbing right turn to 3900 direct EVHAP and hold.

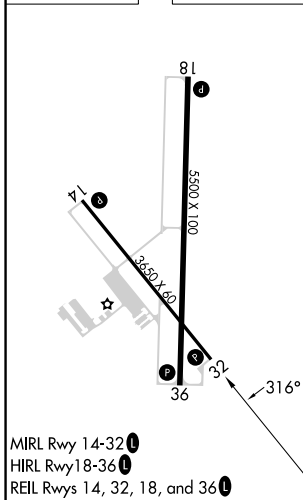
AWOS-3 126.575	OMAHA APP CON 124.5 263.0	CLNC DEL 127.675	UNICOM 122.725 (CTAF)
--------------------------	-------------------------------------	----------------------------	---------------------------------



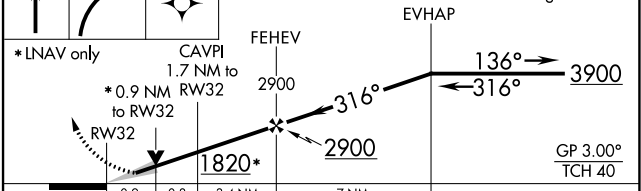
NC-3, 22 FEB 2024 to 21 MAR 2024

NC-3, 22 FEB 2024 to 21 MAR 2024

ELEV 1245	TDZE 1245
-----------	-----------



2000 3900 EVHAP VGSI and RNAV glidepath not coincident 4 NM (VGSI Angle 3.50/TCH 30) Holding Pattern



CATEGORY	A	B	C	D
LPV DA		1445- ³ / ₄	200 (200- ³ / ₄)	
LNAV/VNAV DA		1495- ³ / ₄	250 (300- ³ / ₄)	
LNAV MDA		1620-1	375 (400-1)	
<input checked="" type="checkbox"/> CIRCLING	1780-1	535 (600-1)	1780-1 ¹ / ₂ 535 (600-1 ¹ / ₂)	1880-2 635 (700-2)

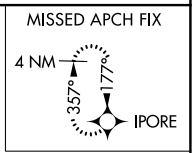
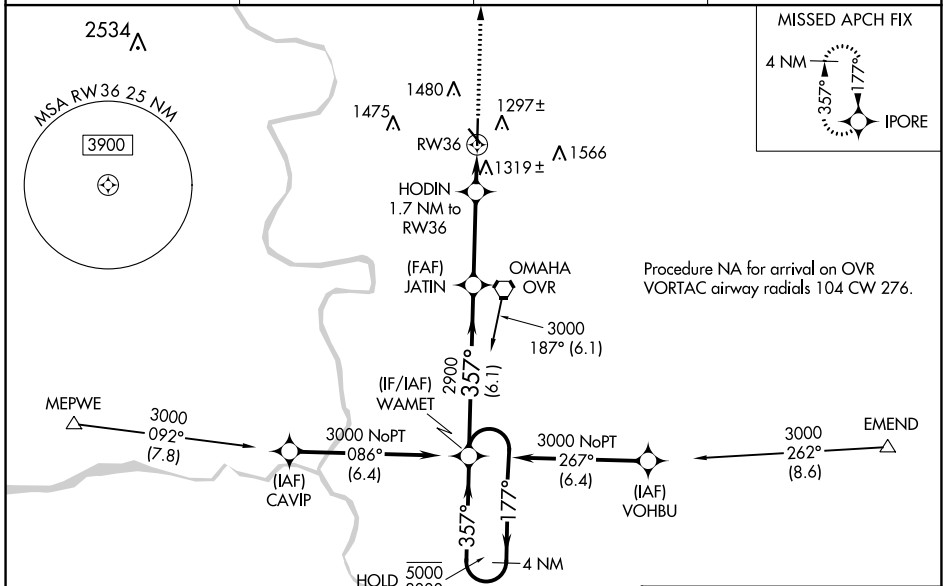
WAAS CH 53606 W36A	APP CRS 357°	Rwy Idg TDZE 1245 Apt Elev 1245
---------------------------------	------------------------	---

RNAV (GPS) RWY 36

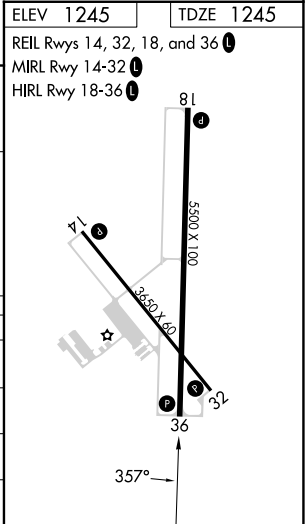
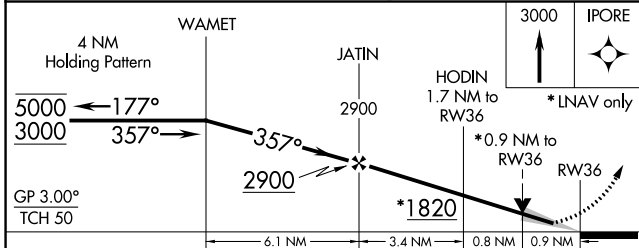
COUNCIL BLUFFS MUNI (CBF)

RNP APCH.	<p>MISSED APPROACH: Climb to 3000 direct IPORE and hold.</p>
<p>Baro-VNAV and VDP NA when using Eppley Airfield altimeter setting. For uncompensated Baro-VNAV systems, LNAV/VNAV NA below -17°C or above 54°C. When local altimeter setting not received, use Eppley Airfield altimeter setting and increase LPV DA to 1498 feet, LNAV/VNAV DA to 1548 feet, and all MDA 60 feet and increase LNAV/VNAV all Cats visibility 1/2 SM, LNAV Cat C and D visibility 1/4 SM, and Circling Cat C and D visibility 1/4 SM.</p>	

AWOS-3 126.575	OMAHA APP CON 124.5 263.0	CLNC DEL 127.675	UNICOM 122.725 (CTAF) U
--------------------------	-------------------------------------	----------------------------	--



ELEV 1245	TDZE 1245
REIL Rwy 14, 32, 18, and 36 U	
MIRL Rwy 14-32 U	
HIRL Rwy 18-36 U	



CATEGORY	A	B	C	D
LPV DA		1445-3/4	200 (200-3/4)	
LNAV/VNAV DA		1495-3/4	250 (300-3/4)	
LNAV MDA		1580-1	335 (400-1)	
C CIRCLING	1780-1 535 (600-1)	1840-1 595 (600-1)	1840-1 1/2 595 (600-1 1/2)	1880-2 635 (700-2)

NC-3, 22 FEB 2024 to 21 MAR 2024

NC-3, 22 FEB 2024 to 21 MAR 2024

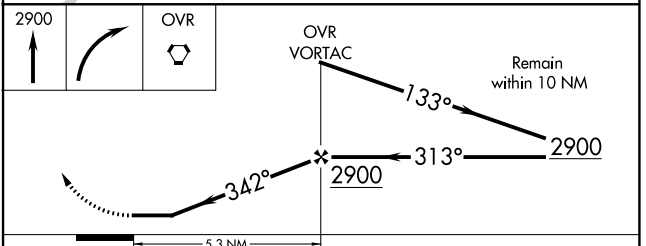
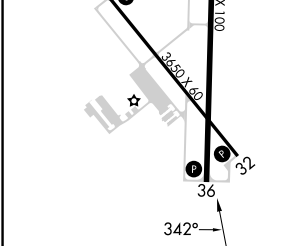
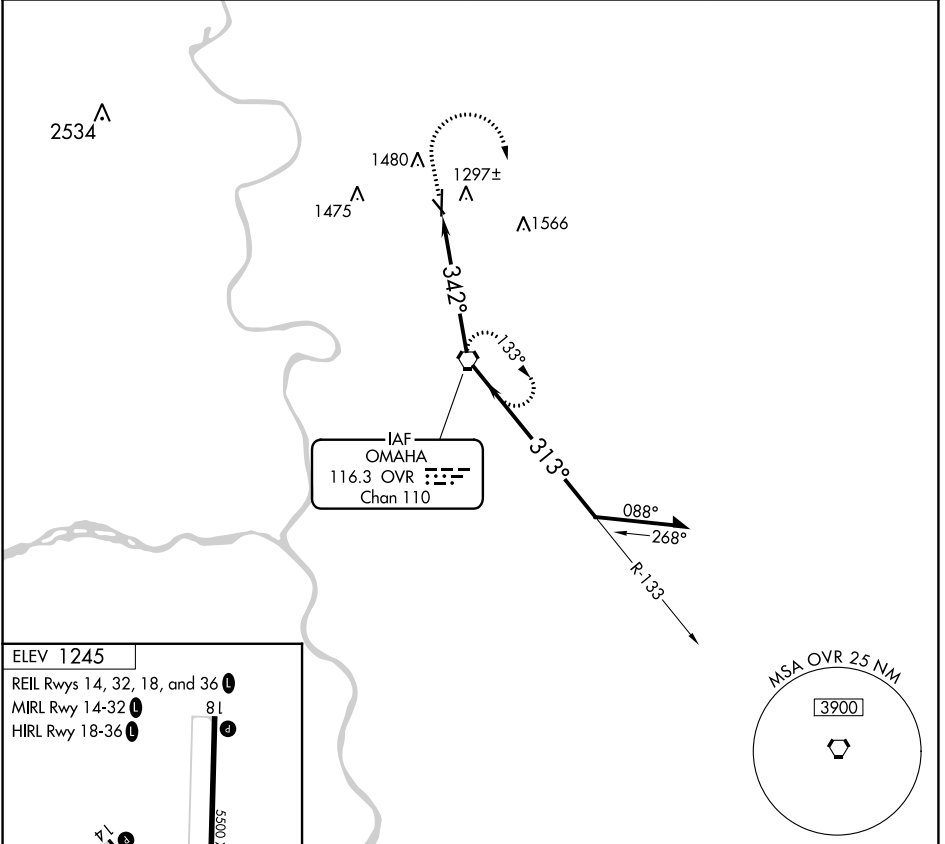
VORTAC OVR 116.3 Chan 110	APP CRS 342°	Rwy Idg TDZE Apt Elev	N/A 1245
---	------------------------	-----------------------------	---------------------------

VOR-A
COUNCIL BLUFFS MUNI (CBF)

⚠ When local altimeter setting not received, use Epley Airfield altimeter setting: increase all MDAs 60 feet and visibility Cat C and D ¼ SM.

MISSED APPROACH: Climb to 2900 then right turn direct OVR VORTAC and hold.

AWOS-3 126.575	OMAHA APP CON 124.5 263.0	CLNC DEL 127.675	UNICOM 122.725 (CTAF) ①
--------------------------	-------------------------------------	----------------------------	--



FAF to MAP 5.3 NM						CATEGORY	A	B	C	D
Knots	60	90	120	150	180	<input checked="" type="checkbox"/> CIRCLING	1780-1 535 (600-1)		1840-1½ 595 (600-1½)	1880-2 635 (700-2)
Min:Sec	5:18	3:32	2:39	2:07	1:46					