

WAAS CH <b>48835</b> <b>W31A</b>	APP CRS <b>306°</b>	Rwy Idg TDZE Apt Elev	<b>6143</b> <b>4940</b> <b>4970</b>
--	------------------------	-----------------------------	---

# RNAV (GPS) RWY 31

JOHNSON COUNTY (BYG)

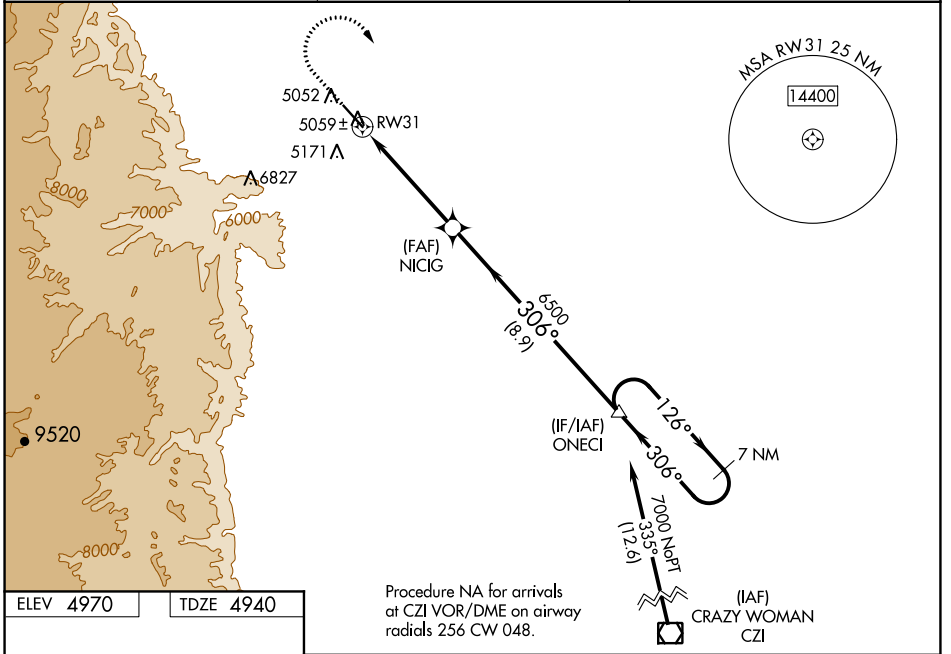
**⚠** When Rwy 13 VGS1 inop, Circling Rwy 13 NA at night. Baro-VNAV and VDP NA when using Sheridan altimeter setting. For uncompensated Baro-VNAV systems, LNAV/VNAV NA below -27°C (-16°F) or above 48°C (120°F). Circling NA southwest of Rwy 13-31. DME/DME RNP-0.3 NA. When local altimeter setting not received, use Sheridan altimeter setting and increase all DA/MDA 200 feet; increase all LPV, LNAV/VNAV, and all LNAV and Circling Cat C/D visibilities ¾ mile.

**MISSED APPROACH:** Climb to 6000, then climbing right turn to 7000 direct ONECI and hold.

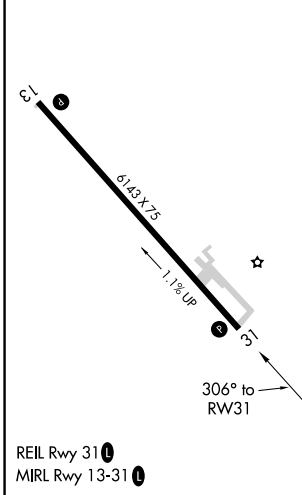
ASOS  
**135.425**

SALT LAKE CENTER  
**127.75 351.9**

UNICOM  
**122.8 (CTAF) 0**

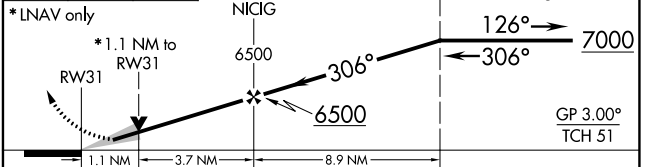


ELEV 4970	TDZE 4940
-----------	-----------



Procedure NA for arrivals at CZI VOR/DME on airway radials 256 CW 048.

6000 7000 ONECI VGS1 and RNAV glidepath not coincident. (VGS1 Angle 3.00/TCH 42)



CATEGORY	A	B	C	D
LPV DA		5190-¾	250 (300-¾)	
LNAV/VNAV DA		5275-1½	335 (400-1½)	
LNAV MDA	5320-1	380 (400-1)	5320-1½	380 (400-1½)
<b>C</b> CIRCLING	5440-1	470 (500-1)	5460-1½ 490 (500-1½)	5600-2 630 (700-2)

NW-1, 13 AUG 2020 to 10 SEP 2020

NW-1, 13 AUG 2020 to 10 SEP 2020

VOR/DME CZI <b>117.3</b> Chan <b>120</b>	APP CRS <b>319°</b>	Rwy Idg <b>6143</b> TDZE <b>4940</b> Apt Elev <b>4970</b>
--	------------------------	---

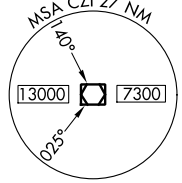
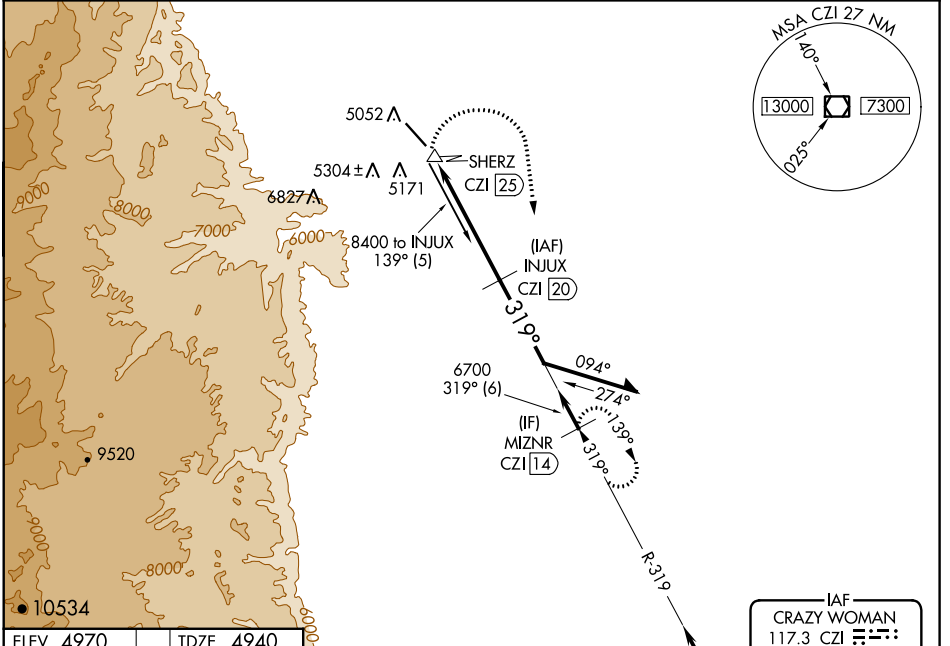
# VOR/DME RWY 31

JOHNSON COUNTY (BYG)

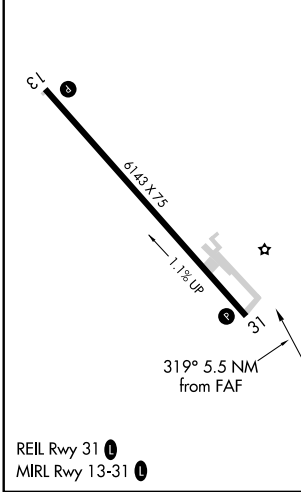
**⚠** Visibility reduction by helicopters NA. If local altimeter setting not received, use Sheridan altimeter setting and increase all MDAs 600 feet. When VGSI inoperative, procedure NA at night. Circling NA southwest of Rwy 13-31.

MISSED APPROACH: Climbing right turn to 7600 via heading 160° and CZI VOR/DME R-319 to MIZNR/14 DME and hold.

ASOS <b>135.425</b>	SALT LAKE CENTER <b>127.75 351.9</b>	UNICOM <b>122.8 (CTAF)</b>
------------------------	---	-------------------------------



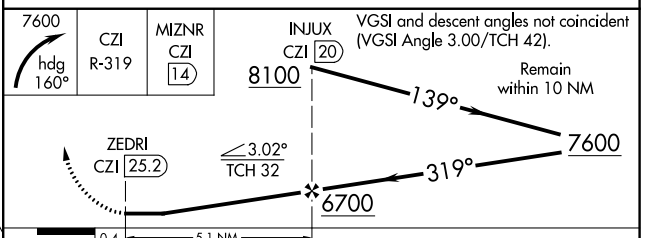
ELEV 4970	TDZE 4940
-----------	-----------



REIL Rwy 31  
MIRL Rwy 13-31

Procedure NA for arrivals at CZI VOR/DME via V247 southbound.

IAF CRAZY WOMAN 117.3 CZI Chan 120



CATEGORY	A	B	C	D
S-31	5680-1 740 (800-1)	5680-1¼ 740 (800-1¼)	5680-2¼ 740 (800-2¼)	5680-2½ 740 (800-2½)
<b>C</b> CIRCLING	5680-1 710 (800-1)	5680-1¼ 710 (800-1¼)	5680-2¼ 710 (800-2¼)	5680-2½ 710 (800-2½)

NW-1, 13 AUG 2020 to 10 SEP 2020

NW-1, 13 AUG 2020 to 10 SEP 2020