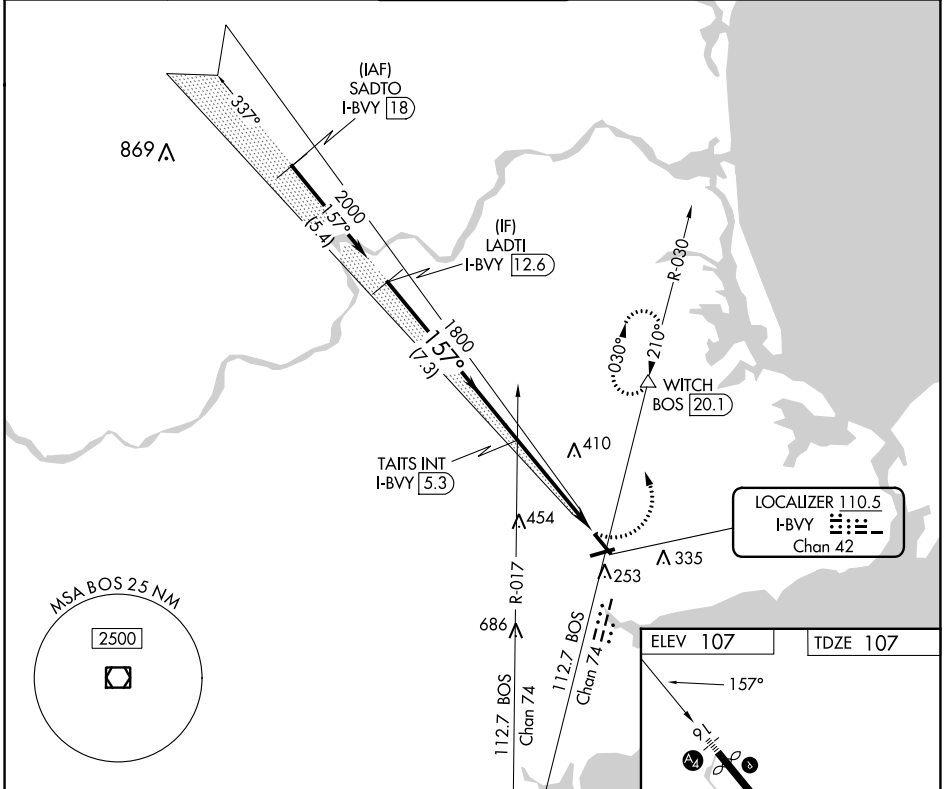


LOC/DME I-BVY 110.5 Chan 42	APP CRS 157°	Rwy Idg 4762 TDZE 107 Apt Elev 107
---	------------------------	---

LOC RWY 16

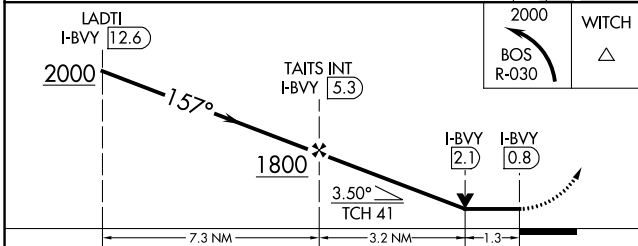
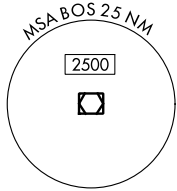
BEVERLY RGNL (BVY)

DME required. RADAR required for procedure entry.		MALS	MISSED APPROACH: Climbing left turn to 2000 on BOS VOR/DME R-030 to WITCH/BOS 20.1 DME and hold, continue climb-in-hold to 2000.	
<p>▼ Circling Rwy 9 NA at night. Rwy 16 helicopter visibility reduction below 3/4 SM NA. Inop table does not apply to ALS Rwy 16.</p> <p>▲</p>		AY		
ATIS 119.2	BOSTON APP CON 124.4 279.6	BEVERLY TOWER ★ 125.2 (CTAF) 0	GND CON 121.6	UNICOM 122.95



NE-1, 22 FEB 2024 to 21 MAR 2024

NE-1, 22 FEB 2024 to 21 MAR 2024



CATEGORY	A	B	C	D
S-LOC 16	620-1	513 (600-1)	620-1 ³ / ₈	513 (600-1 ³ / ₈)
C CIRCLING	620-1	513 (600-1)	820-2	880-2 ¹ / ₂
			713 (800-2)	773 (800-2 ¹ / ₂)

ELEV 107	TDZE 107
MIRL Rwy 9-27 and 16-34	
REIL Rwy 34	
FAF to MAP 4.4 NM	
Knots	60 90 120 150 180
Min:Sec	4:24 2:56 2:12 1:46 1:28

WAAS CH 93722 W16A	APP CRS 157°	Rwy Idg 4762 TDZE 107 Apt Elev 107
--	------------------------	---

RNAV (GPS) RWY 16

BEVERLY RGNL (BVY)

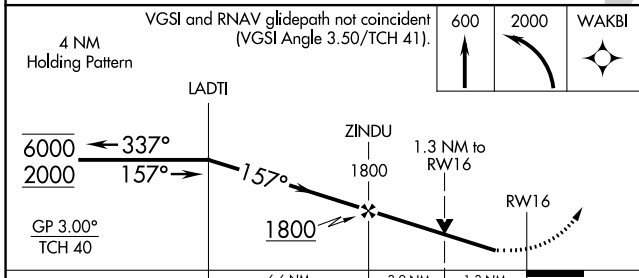
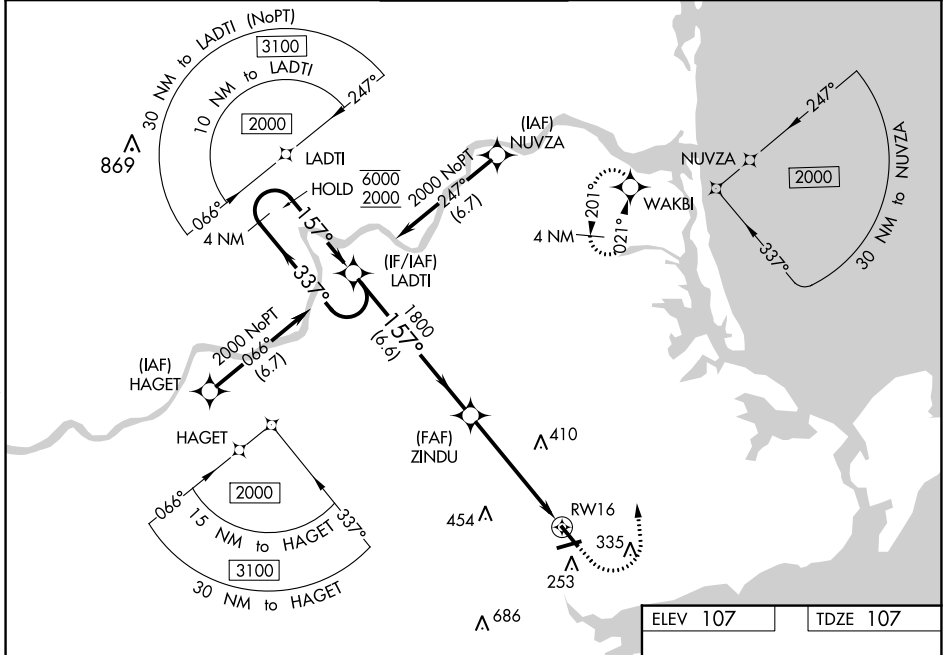
RNP APCH-GPS.

⚠ Circling Rwy 9 NA at night. Rwy 16 helicopter visibility reduction below ¾ SM NA. Inop table does not apply. For uncompensated Baro-VNAV systems, LNAV/VNAV NA below -18° C or above 54° C.

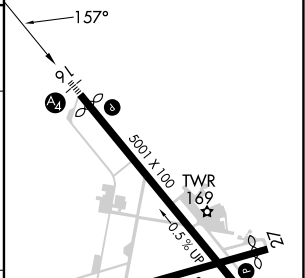
MALS

MISSED APPROACH: Climb to 600 then climbing left turn to 2000 direct WAKBI and hold.

ATIS 119.2	BOSTON APP CON 124.4 279.6	BEVERLY TOWER★ 125.2 (CTAF) 0	GND CON 121.6	UNICOM 122.95
----------------------	--------------------------------------	--	-------------------------	-------------------------



ELEV 107	TDZE 107
----------	----------



CATEGORY	A	B	C	D
LPV DA		357-¾	250 (300-¾)	
LNAV/VNAV DA		422-7/8	315 (400-7/8)	
LNAV MDA	620-1	513 (600-1)	620-1 3/8	513 (600-1 3/8)
C CIRCLING	620-1	513 (600-1)	820-2 713 (800-2)	820-2 1/4 713 (800-2 1/4)

MIRL Rwys 9-27 and 16-34 **0**
REL Rwy 34 **0**

NE-1, 22 FEB 2024 to 21 MAR 2024

NE-1, 22 FEB 2024 to 21 MAR 2024

WAAS CH 99731 W27A	APP CRS 270°	Rwy Idg 4505 TDZE 91 Apt Elev 107
--	------------------------	--

RNAV (GPS) RWY 27

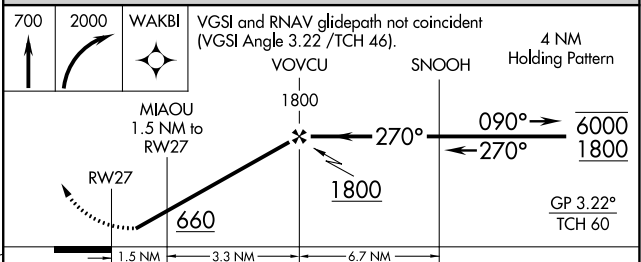
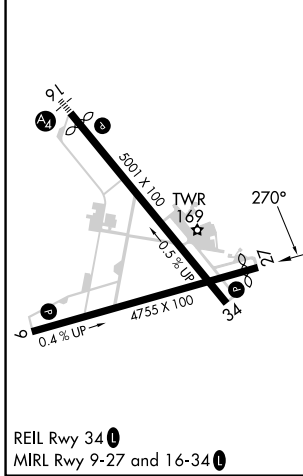
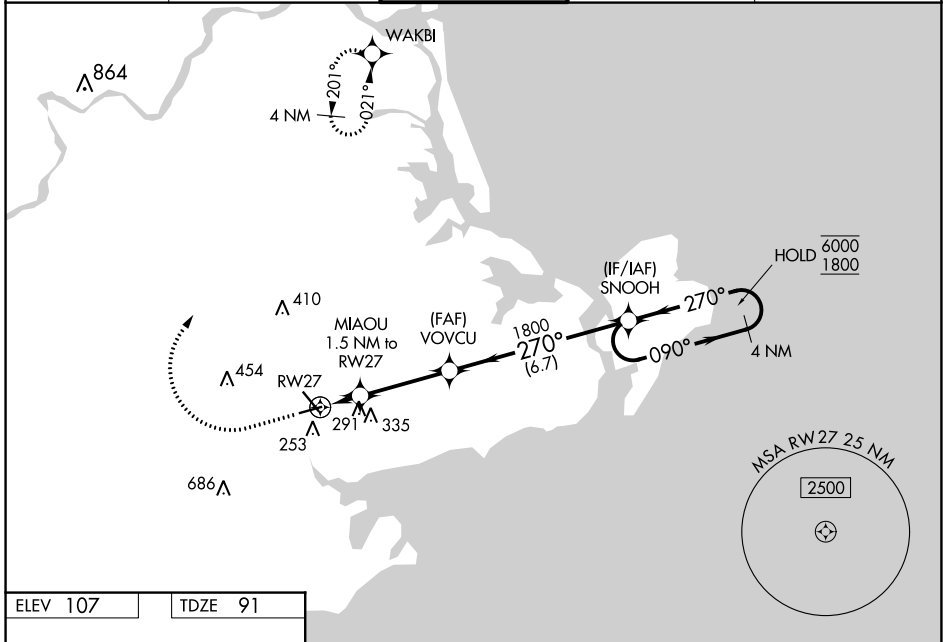
BEVERLY RGNL (BVY)

RNP APCH - GPS.

⚠ Circling Rwy 9 NA at night. Rwy 27 helicopter visibility reduction below $\frac{3}{4}$ SM NA. For uncompensated Baro-VNAV systems, LNAV/VNAV NA below -18°C or above 54°C.

MISSED APPROACH: Climb to 700 then climbing right turn to 2000 direct WAKBI and hold.

ATIS 119.2	BOSTON APP CON 124.4 279.6	BEVERLY TOWER★ 125.2 (CTAF) 0	GND CON 121.6	UNICOM 122.95
----------------------	--------------------------------------	---	-------------------------	-------------------------



CATEGORY	A	B	C	D
LPV DA	444-1	353 (400-1)		NA
LNAV/VNAV DA	438-1	347 (400-1)		NA
LNAV MDA	540-1	449 (500-1)	540-1 $\frac{3}{8}$	449 (500-1 $\frac{3}{8}$)
C CIRCLING	600-1	493 (500-1)	820-2 713 (800-2)	820-2 $\frac{1}{4}$ 713 (800-2 $\frac{1}{4}$)

NE-1, 22 FEB 2024 to 21 MAR 2024

NE-1, 22 FEB 2024 to 21 MAR 2024

WAAS CH 97631 W34A	APP CRS 337°	Rwy Idg TDZE Apt Elev	5001 102 107
--	------------------------	-----------------------------	---

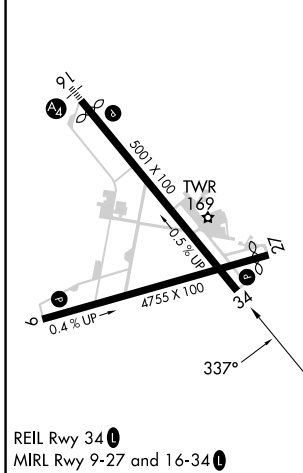
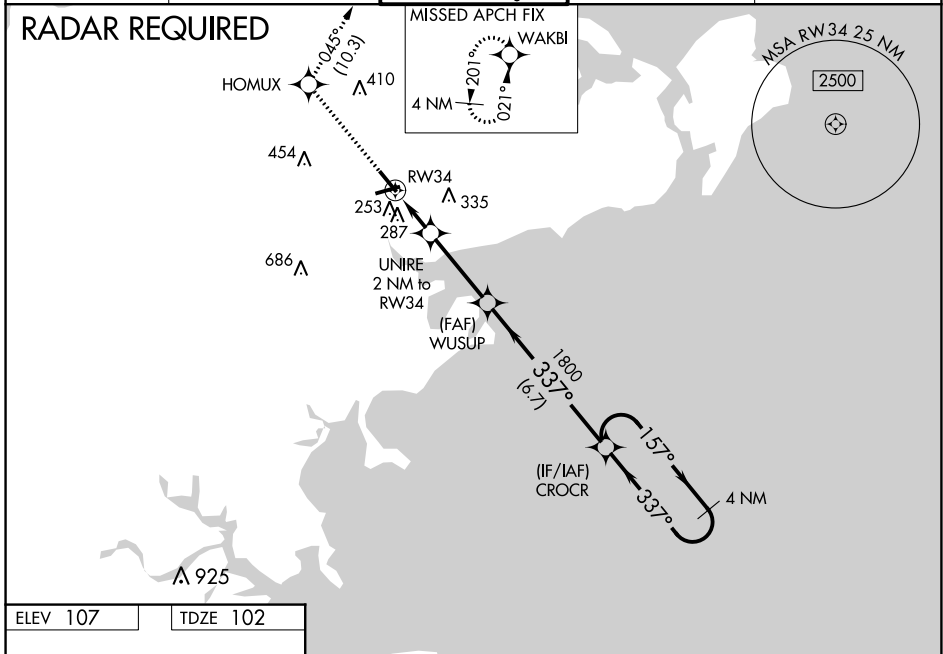
RNAV (GPS) RWY 34

BEVERLY RGNL (BVY)

⚠ For uncompensated Baro-VNAV systems, LNAV/VNAV NA below -18°C (0°F) or above 54°C (130°F). Baro-VNAV and VDP NA when using Lawrence altimeter setting. DME/DME RNP-0.3 NA. When local altimeter setting not received, use Lawrence altimeter setting: increase LPV DA to 416 and LNAV/VNAV DA to 502 and all MDA 40 feet; increase LPV all Cats visibility and LNAV/VNAV all Cats visibility and LNAV Cats C and D visibility 1/8 SM and Circling Cats C and D visibility 1/4 SM. Circling Rwy 9 NA at night. Rwy 34 helicopter visibility reduction below 3/4 SM NA. Rwy 9 helicopter visibility reduction below 1 SM NA.

MISSED APPROACH:
Climb to 2000 direct HOMUX and on track 045° to WAKBI and hold.

ATIS 119.2	BOSTON APP CON 124.4 279.6	BEVERLY TOWER ★ 125.2 (CTAF) 0	GND CON 121.6	UNICOM 122.95
----------------------	--------------------------------------	---	-------------------------	-------------------------



2000	HOMUX	tr 045°	WAKBI	4 NM Holding Pattern
*LNAV only.				
	RW34	UNIRE 2 NM to RW34	WUSUP 1800	CROCR
	*1.3 NM to RW34	*760	1800	157° → 2000
	← 337°			← 337°
	GP 3.00°			TCH 54
CATEGORY	A	B	C	D
LPV DA	382-1 280 (300-1)			
LNAV/VNAV DA	468-1 1/4 366 (400-1 1/4)			
LNAV MDA	540-1	438 (500-1)	540-1 1/4	438 (500-1 1/4)
CIRCLING	600-1	493 (500-1)	820-2 713 (800-2)	880-2 1/2 773 (800-2 1/2)

NE-1, 22 FEB 2024 to 21 MAR 2024

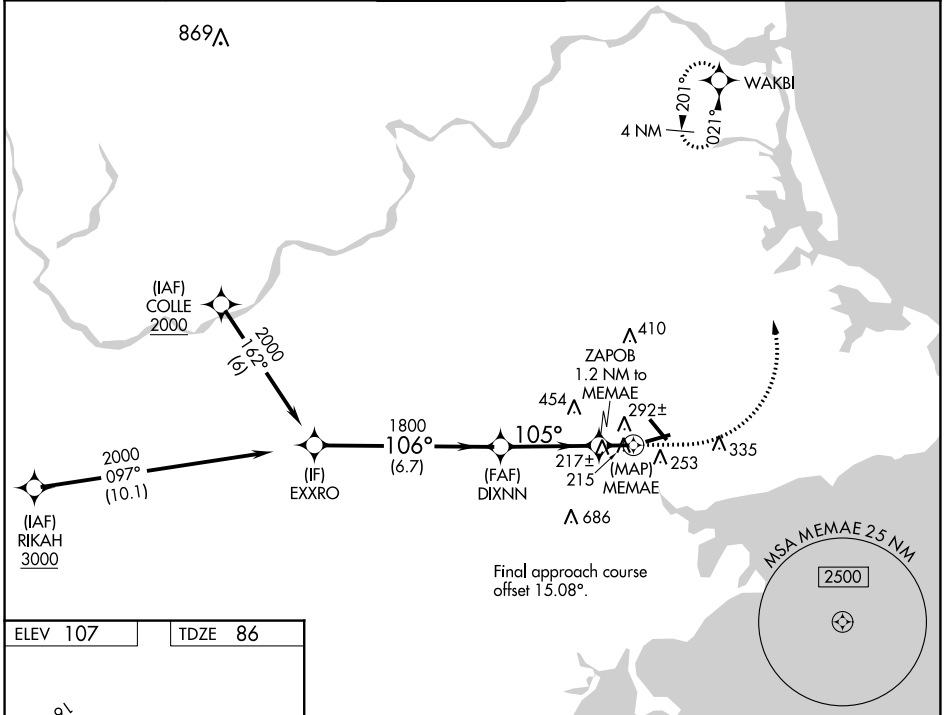
NE-1, 22 FEB 2024 to 21 MAR 2024

WAAS CH 65640 W09A	APP CRS 105°	Rwy Idg TDZE Apt Elev	4755 86 107
--	------------------------	-----------------------------	--

RNAV (GPS) RWY 9

BEVERLY RGNL (BVY)

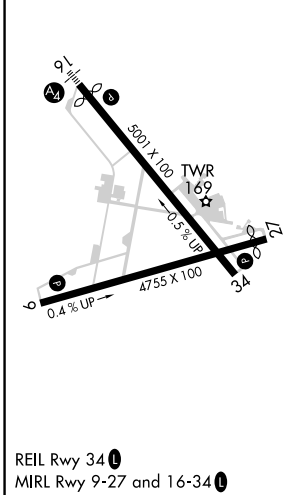
RNP APCH - GPS.		MISSED APPROACH: Climb to 600 then climbing left turn to 2000 direct WAKBI and hold.		
<p>▼ Rwy 9 helicopter visibility reduction below 1 SM NA. ▲ Straight-in Rwy 9 NA at night, Circling Rwy 9 NA at night.</p>				
ATIS 119.2	BOSTON APP CON 124.4 279.6	BEVERLY TOWER★ 125.2 (CTAF) 0	GND CON 121.6	UNICOM 122.95



NE-1, 22 FEB 2024 to 21 MAR 2024

NE-1, 22 FEB 2024 to 21 MAR 2024

ELEV 107	TDZE 86
----------	---------



REIL Rwy 34 0
MIRL Rwy 9-27 and 16-34 0

VGSI and descent angles not coincident (VGSI Angle 3.00/TCH 43).		600	2000	WAKBI												
		↑	↩	✦												
<table border="1"> <tr> <td>EXXRO</td> <td>DIXNN</td> <td>ZAPOB</td> <td>MEMAE</td> </tr> <tr> <td>2000</td> <td>1800</td> <td>700</td> <td></td> </tr> <tr> <td>6.7 NM</td> <td>3.5 NM</td> <td>1.2 NM</td> <td>0.5</td> </tr> </table>		EXXRO	DIXNN	ZAPOB	MEMAE	2000	1800	700		6.7 NM	3.5 NM	1.2 NM	0.5			
EXXRO	DIXNN	ZAPOB	MEMAE													
2000	1800	700														
6.7 NM	3.5 NM	1.2 NM	0.5													
CATEGORY	A	B	C	D												
LP MDA	480-1	394 (400-1)	480-1 $\frac{1}{8}$	394 (400-1 $\frac{1}{8}$)												
LNAV MDA	560-1	474 (500-1)	560-1 $\frac{3}{8}$	474 (500-1 $\frac{3}{8}$)												
☑ CIRCLING	600-1	493 (500-1)	820-2 713 (800-2)	820-2 $\frac{1}{4}$ 713 (800-2 $\frac{1}{4}$)												