


LOC/DME I-CLZ 108.7 Chan 24	APP CRS 223°	Rwy Idg 7500 TDZE 70 Apt Elev 70
---	------------------------	---

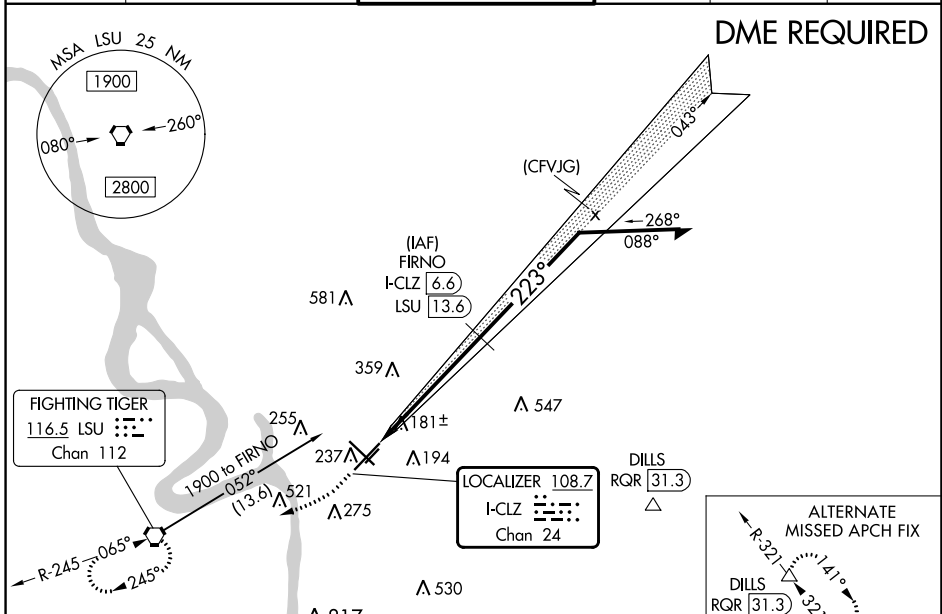
ILS RWY 22R (SA CAT I & II)

BATON ROUGE METRO, RYAN FLD (BTR)

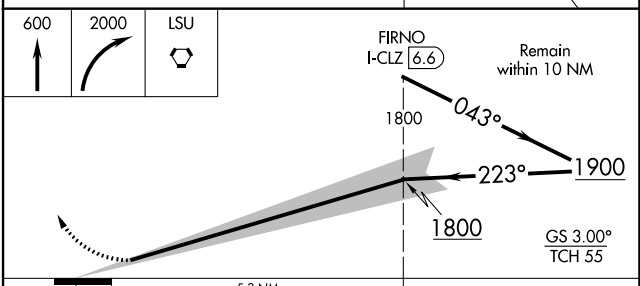
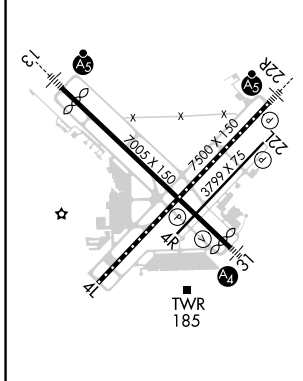
ASR SA CAT I: Requires specific OPSPEC, MSPEC, or LOA approval and use of HUD to DH.
SA CAT II: Reduced lighting: Requires specific OPSPEC, MSPEC, or LOA approval and use of autoland or HUD to touchdown.
SA CAT I/II: Procedure NA when tower closed.

MALSR  MISSED APPROACH: Climb to 600 then climbing right turn to 2000 direct LSU VORTAC and hold.

ATIS 125.2	BATON ROUGE APP CON ★ 120.3 278.3	RYAN TOWER ★ 118.45 (CTAF) 257.8	GND CON 121.9	CLNC DEL 119.4	UNICOM 122.95
----------------------	---	--	-------------------------	--------------------------	-------------------------



ELEV 70	D	TDZE 70
---------	----------	---------



CATEGORY	A	B	C	D
S-ILS 22R	SA CAT I	RA 163/14	150 DA 220	
S-ILS 22R	SA CAT II	RA 106/12	100 DA 170	

SA CATEGORY I & II ILS - SPECIAL AIRCREW & AIRCRAFT CERTIFICATION REQUIRED

SC-4, 22 FEB 2024 to 21 MAR 2024


SC-4, 22 FEB 2024 to 21 MAR 2024

LOC/DME I-CLZ	APP CRS	Rwy Idg	7500
108.7	223°	TDZE	70
Chan 24		Apt Elev	70

ILS or LOC/DME RWY 22R

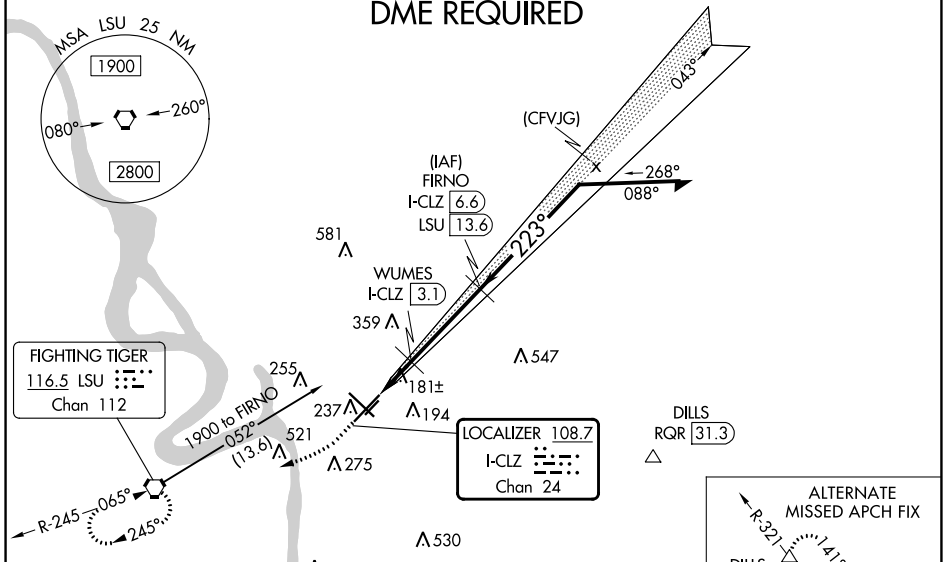
BATON ROUGE METRO, RYAN FLD (BTR)

⚠ When local altimeter setting not received, use Hammond altimeter setting and increase all DA 91 feet and all MDA 100 feet; increase S-ILS 22R all Cats visibility to RVR 2200; increase S-LOC 22R Cat C/D visibility to RVR 5000. For inop MALSAR when using Hammond altimeter setting, increase S-ILS 22R all Cats visibility to RVR 4500, and S-LOC 22R Cat C/D visibility to 1 3/8 mile. For inop MALSAR, increase S-LOC 22R Cat C/D visibility to RVR 5500. VDP NA with Hammond altimeter setting.

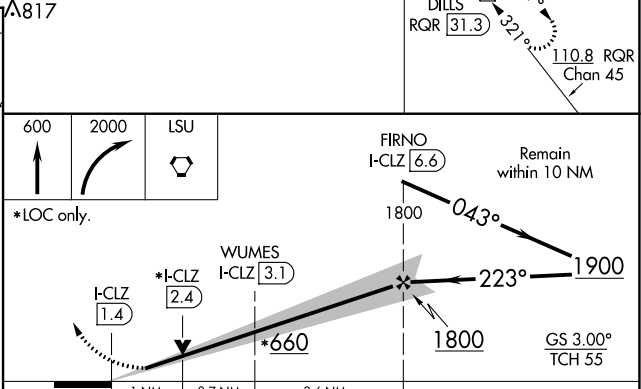
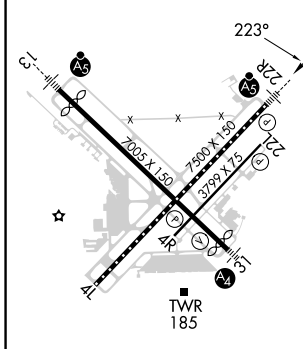
MALSAR
 MISSED APPROACH: Climb to 600 then climbing right turn to 2000 direct LSU VORTAC and hold.

ATIS	BATON ROUGE APP CON *	RYAN TOWER *	GND CON	CLNC DEL	UNICOM
125.2	120.3 278.3	118.45 (CTAF) 0 257.8	121.9	119.4	122.95

DME REQUIRED



ELEV 70	D	TDZE 70
---------	----------	---------



CATEGORY	A	B	C	D
S-ILS 22R	270/18 200 (200-1/2)			
S-LOC 22R	440/24	370 (400-1/2)	440/35	370 (400-3/4)
C CIRCLING	560-1 490 (500-1)	660-1 590 (600-1)	780-2 710 (800-2)	840-2 1/2 770 (800-2 1/2)

SC-4, 22 FEB 2024 to 21 MAR 2024

SC-4, 22 FEB 2024 to 21 MAR 2024

WAAS CH 72817 W13A	APP CRS 133°	Rwy Idg 5720 TDZE 67 Apt Elev 70
---------------------------------	------------------------	---

RNAV (GPS) RWY 13

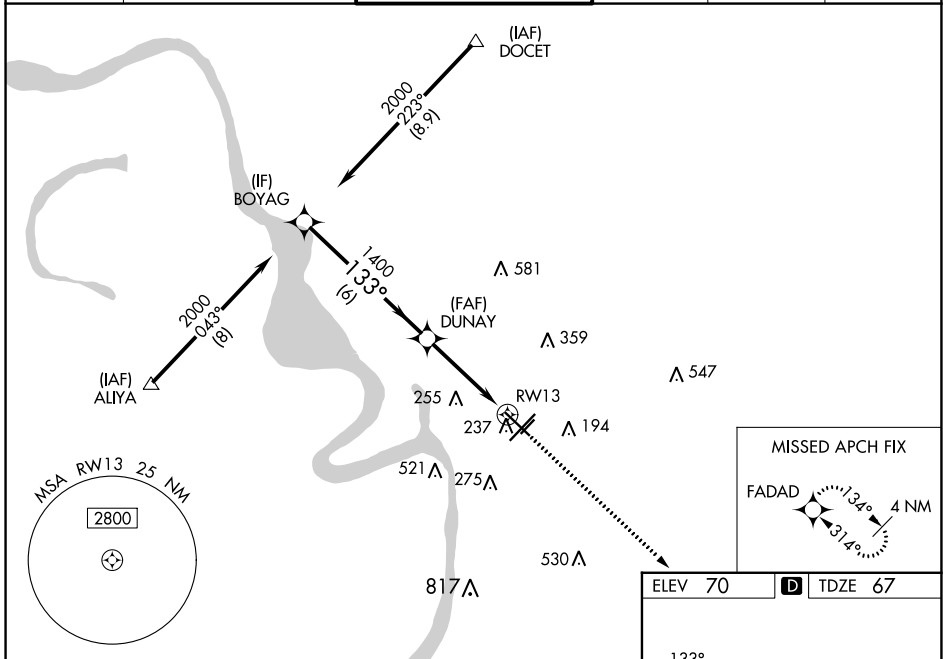
BATON ROUGE METRO, RYAN FLD (BTR)

⚠ For uncompensated Baro-VNAV systems, LNAV/VNAV NA below -5°C (23°F) or above 54°C (130°F). DME/DME RNP-0.3 NA. When local altimeter setting not received, use Hammond altimeter setting and increase all DA 91 feet and all MDA 100 feet, and increase LNAV/VNAV all Cats visibility 1/4 mile, and LNAV Cats C and D visibility 3/8 mile. For inop MALSRL when using Hammond altimeter setting, increase LPV all Cats visibility to 3/8 mile, LNAV Cat C and D visibility to 1/2 mile. Baro-VNAV and VDP NA when using Hammond altimeter setting.

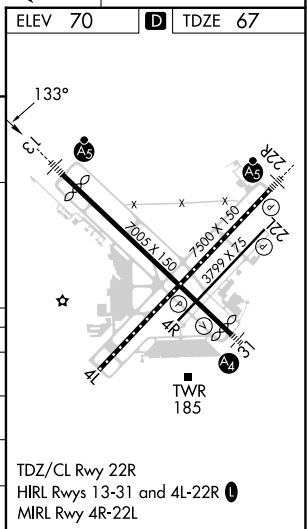
MALSRL
ASR

MISSED APPROACH: Climb to 2300 direct FADAD and hold.

ATIS 125.2	BATON ROUGE APP CON ★ 120.3 278.3	RYAN TOWER ★ 118.45 (CTAF) 257.8	GND CON 121.9	CLNC DEL 119.4	UNICOM 122.95
----------------------	---	--	-------------------------	--------------------------	-------------------------



BOYAG		DUNAY		2300	FADAD
2000		1400		*1.3 NM to RWY 13	
133°		1400		*LNAV only.	
GP 3.00°		TCH 57		RWY 13	
6 NM		2.7 NM		1.3	
CATEGORY	A	B	C	D	
LPV DA		267-1/2	200 (200-1/2)		
LNAV/VNAV DA		465-7/8	398 (400-7/8)		
LNAV MDA	540-1/2	473 (500-1/2)	540-1	473 (500-1)	
C CIRCLING	560-1 490 (500-1)	660-1 590 (600-1)	780-2 710 (800-2)	840-2 1/2 770 (800-2 1/2)	



SC-4, 22 FEB 2024 to 21 MAR 2024

SC-4, 22 FEB 2024 to 21 MAR 2024

WAAS CH 86225 W22A	APP CRS 224°	Rwy Idg 7500 TDZE 70 Apt Elev 70
--	------------------------	---

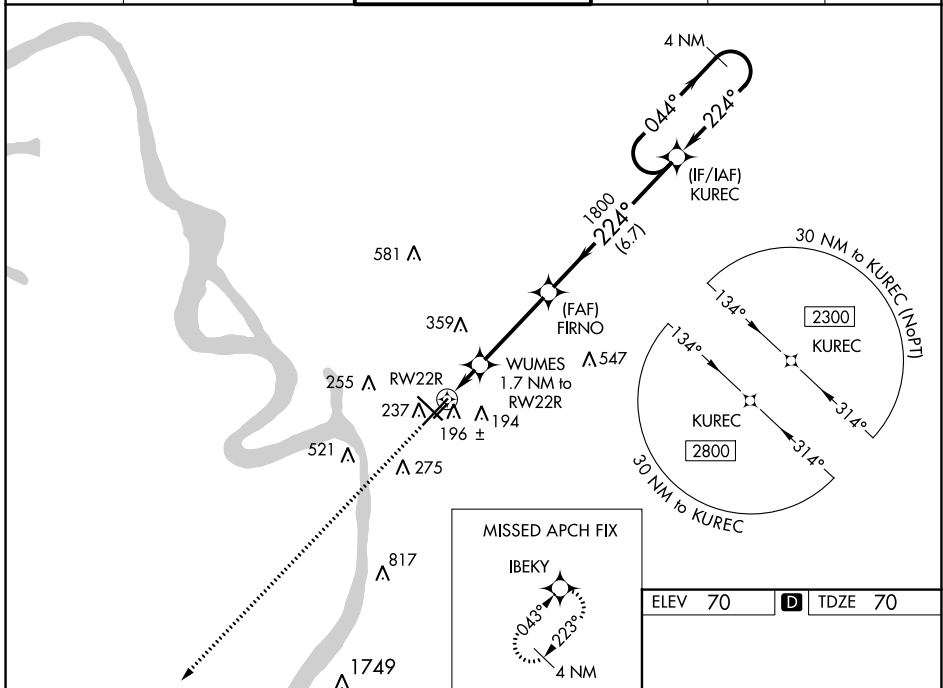
RNAV (GPS) RWY 22R

BATON ROUGE METRO, RYAN FLD (BTR)

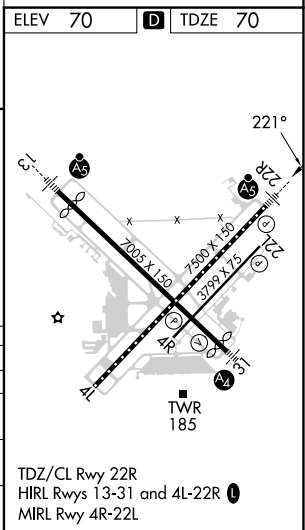
ASR Baro-VNAV NA when using Hammond altimeter setting. For uncompensated Baro-VNAV systems, LNAV/VNAV NA below -5°C (23°F) or above 54°C (130°F). DME/DME RNP-0.3 NA. VDP NA with Hammond altimeter setting. When local altimeter setting not received, use Hammond altimeter setting and increase all DA 91 feet, and all MDA 100 feet; increase LNAV/VNAV all Cats visibility 3/8 mile, LNAV Cat C/D visibility to RVR 5000, and Circling Cat C/D visibility 1/4 mile. For inop MALS/R when using Hammond altimeter setting, increase LPV all Cats visibility to RVR 4500, and LNAV C/D visibility to 1 1/8 mile.

MALS/R
MISSED APPROACH:
Climb to 2800 direct
IBEKY and hold.

ATIS 125.2	BATON ROUGE APP CON* 120.3 278.3	RYAN TOWER* 118.45 (CTAF) 0 257.8	GND CON 121.9	CLNC DEL 119.4	UNICOM 122.95
----------------------	--	---	-------------------------	--------------------------	-------------------------



2800	IBEKY	KUREC 4 NM Holding Pattern			
*LNAV only.	WUMES *1.1 NM to RW22R	FIRNO 1800	224°	044°	2300
	1.7 NM to RW22R	1800		224°	GP 3.00° TCH 55
	1.1	0.6	3.6 NM	6.7 NM	
CATEGORY	A	B	C	D	
LPV DA		270/18	200 (200-1/2)		
LNAV/VNAV DA		486/45	416 (500-3/8)		
LNAV MDA	460/24	390 (400-1/2)	460/35	390 (400-3/8)	
C CIRCLING	560-1 490 (500-1)	660-1 590 (600-1)	780-2 710 (800-2)	840-2 1/2 770 (800-2 1/2)	



SC-4, 22 FEB 2024 to 21 MAR 2024

SC-4, 22 FEB 2024 to 21 MAR 2024

WAAS CH 81825 W04A	APP CRS 043°	Rwy Idg 7500 TDZE 69 Apt Elev 70
--	------------------------	---

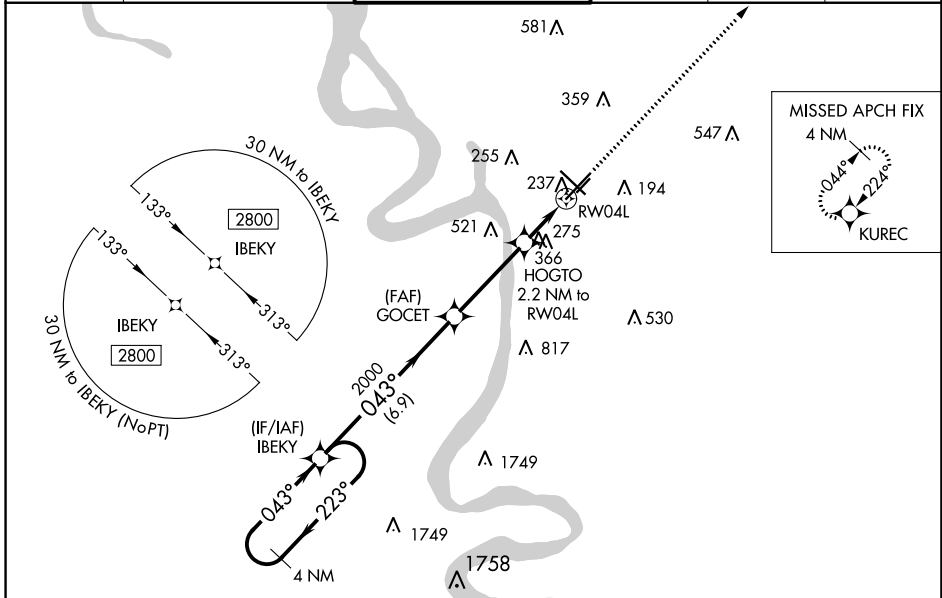
RNAV (GPS) RWY 4L

BATON ROUGE METRO, RYAN FLD (BTR)

▲ For uncompensated Baro-VNAV systems, LNAV/VNAV NA below -5°C (23°F) or above 54°C (130°F).
▲ DME/DME RNP-0.3 NA. Baro-VNAV and VDP NA when using Hammond altimeter setting. When local altimeter setting not received, use Hammond altimeter setting and increase all DA 91 feet and all ASR MDA 100 feet; increase LPV visibility ¼ mile all Cats, LNAV/VNAV visibility ½ mile all Cats and LNAV Cat C/D visibility ¼ mile, Circling Cat C/D visibility ¼ mile. Helicopter visibility reduction below ¾ SM NA.

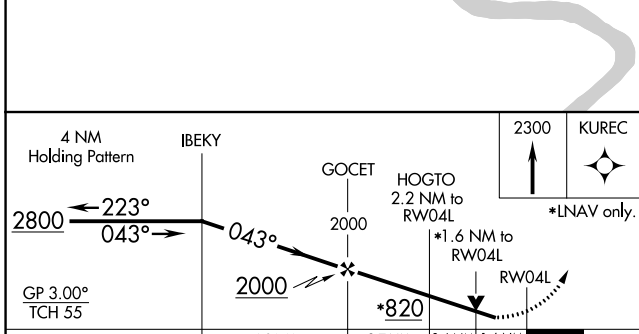
MISSED APPROACH:
Climb to 2300 direct KUREC and hold.

ATIS 125.2	BATON ROUGE APP CON* 120.3 278.3	RYAN TOWER* 118.45 (CTAF) 257.8	GND CON 121.9	CLNC DEL 119.4	UNICOM 122.95
----------------------	--	---	-------------------------	--------------------------	-------------------------



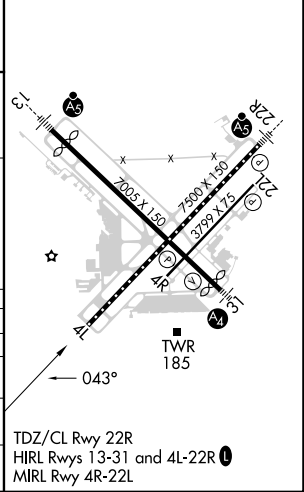
SC-4, 22 FEB 2024 to 21 MAR 2024

SC-4, 22 FEB 2024 to 21 MAR 2024



ELEV 70	D	TDZE 69
---------	---	---------

CATEGORY	A	B	C	D
LPV DA		345- ⁷ / ₈	276 (300- ⁷ / ₈)	
LNAV/VNAV DA		656-2	587 (600-2)	
LNAV MDA	620-1	551 (600-1)	620-1 ⁵ / ₈	551 (600-1 ⁵ / ₈)
C CIRCLING	620-1 550 (600-1)	660-1 590 (600-1)	780-2 710 (800-2)	840-2 ¹ / ₂ 770 (800-2 ¹ / ₂)



TDZ/CL Rwy 22R
HIRL Rwys 13-31 and 4L-22R
MIRL Rwy 4R-22L

