

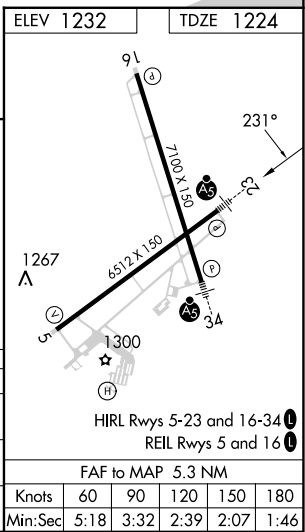
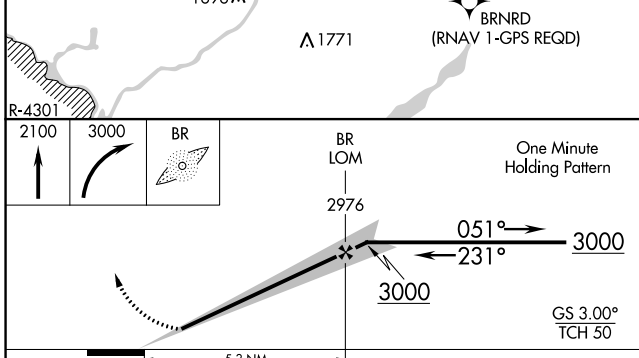
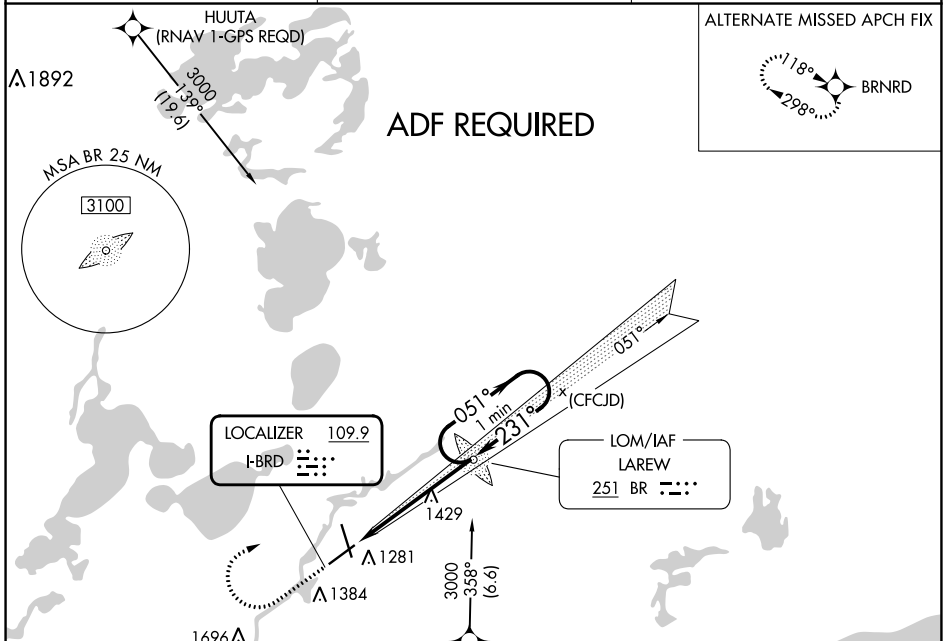
LOC I-BRD 109.9	APP CRS 231°	Rwy ldg TDZE Apt Elev	6512 1224 1232
---------------------------	------------------------	-----------------------------	---

ILS or LOC RWY 23

BRainerd LAKES RGNL (BRD)

<p>ADF REQUIRED. When local altimeter setting not received, use Aitkin altimeter setting and increase all DAs 52 feet and all MDAs 60 feet. Increase S-LOC Cat C visibility to 1 SM and Circling Cat D visibility to 2¼ SM.</p>	<p>MALSR</p>	<p>MISSED APPROACH: Climb to 2100 then climbing right turn to 3000 direct LAREW LOM and hold.</p>
--	--------------	---

ASOS 126.775	MINNEAPOLIS CENTER 118.05 239.0	UNICOM 122.7 (CTAF)
------------------------	---	-------------------------------



CATEGORY	A	B	C	D
S-ILS 23	1424-½ 200 (200-½)			
S-LOC 23	1680-½ 456 (500-½)	1680-¾ 456 (500-¾)	1680-1 456 (500-1)	
C CIRCLING	1760-1 528 (600-1)	1760-1½ 528 (600-1½)	1860-2 628 (700-2)	

NC-1, 22 FEB 2024 to 21 MAR 2024

NC-1, 22 FEB 2024 to 21 MAR 2024

LOC/DME I-LEr	APP CRS	Rwy Idg	7100
109.7	340°	TDZE	1232
Chan 34		Apt Elev	1232

ILS or LOC/DME RWY 34

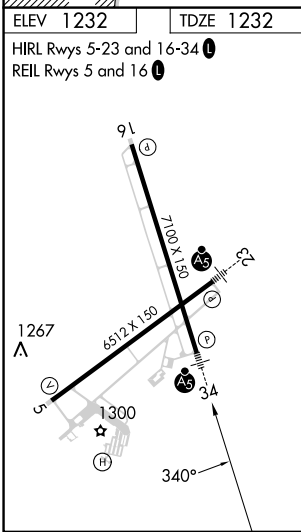
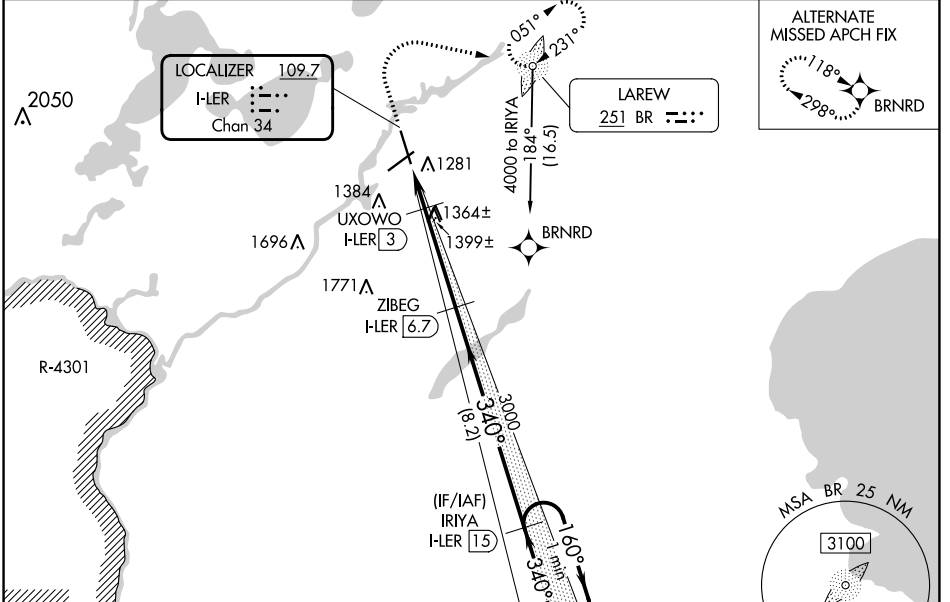
BRainerd LAKES RGnL (BRD)

DME required. ADF required.
 RNP APCH-GPS. from GOLLF.

MALS

MISSED APPROACH: Climb to 1700 then climbing right turn to 4000 direct BR LOM, continue climb-in-hold to 4000.

ASOS 126.775	MINNEAPOLIS CENTER 118.05 239.0	UNICOM 122.7(CTAF) 0
------------------------	---	--------------------------------



1700	4000	BR	ZIBEG I-LEr (6.7)	IRIYA I-LEr (15)	One Minute Holding Pattern
*LOC only	*H-LEr (1.3)	*H-LEr (2.4)	UXOWO I-LEr (3)	3000	160° → 4000
	1.1 NM	0.6	3.7 NM	8.2 NM	GS 3.00° TCH 46
CATEGORY	A	B	C	D	
S-ILS 34	1432-1/2		200 (200-1/2)		
S-LOC 34	1620-1/2 388 (400-1/2)		1620-5/8 388 (400-5/8)		
C CIRCLING	1760-1 528 (600-1)		1760-1 1/2 528 (600-1 1/2)		1860-2 628 (700-2)

NC-1, 22 FEB 2024 to 21 MAR 2024

NC-1, 22 FEB 2024 to 21 MAR 2024

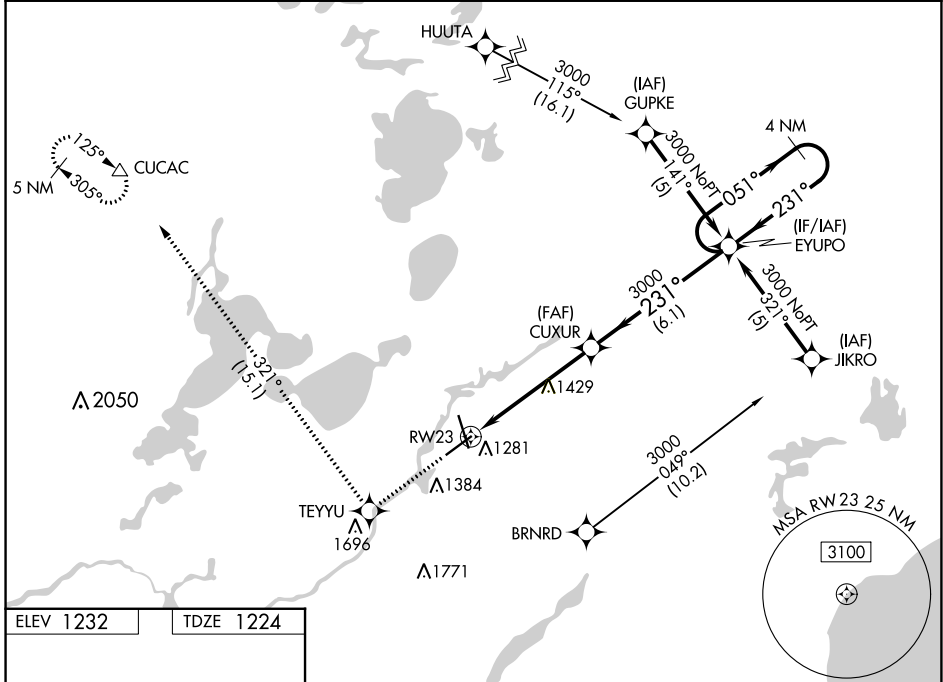
WAAS CH 82502 W23A	APP CRS 231°	Rwy Idg 6512 TDZE 1224 Apt Elev 1232
--	------------------------	---

RNAV (GPS) RWY 23

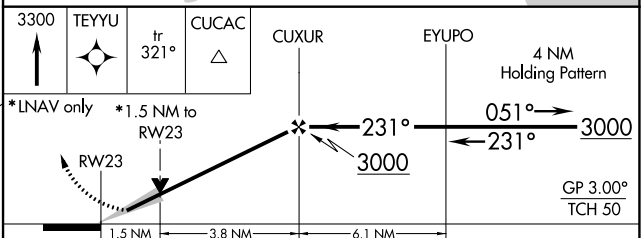
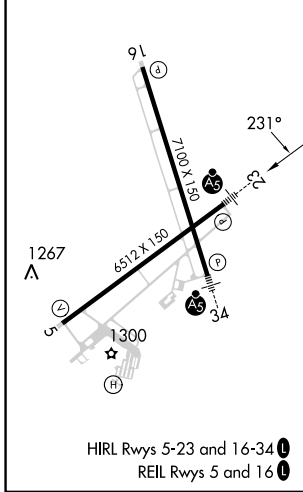
BRainerd LAKES RGNL (BRD)

RNP APCH. ▼ For uncompensated Baro-VNAV systems, LNAV/VNAV NA below -17°C or above 54°C. Baro-VNAV and VDP NA when using Aikin altimeter setting. When local altimeter setting not received, use Aikin altimeter setting and increase all DAs 52 feet and all MDAs 60 feet.	MALSR 	MISSED APPROACH: Climb to 3300 direct TEYU and on track 321° to CUCAC and hold.
--	-----------	---

ASOS 126.775	MINNEAPOLIS CENTER 118.05 239.0	UNICOM 122.7 (CTAF) 1
------------------------	---	--



ELEV 1232	TDZE 1224
-----------	-----------



CATEGORY	A	B	C	D
LPV DA		1501-½	277 (300-½)	
LNAV/VNAV DA		1573-¾	349 (400-¾)	
LNAV MDA	1760-½	536 (600-½)	1760-1 536 (600-1)	1760-1½ 536 (600-1¼)
CIRCLING	1760-1	528 (600-1)	1760-1½ 528 (600-1½)	1860-2 628 (700-2)

NC-1, 22 FEB 2024 to 21 MAR 2024

NC-1, 22 FEB 2024 to 21 MAR 2024

WAAS CH 70711 W34A	APP CRS 340°	Rwy Idg TDZE Apt Elev	7100 1232 1232
--	------------------------	-----------------------------	---

RNAV (GPS) RWY 34

BRAINERD LAKES RGNL (BRD)

RNP APCH.

▼ Baro-VNAV and VDP NA when using Aitkin altimeter setting. For uncompensated Baro-VNAV systems, LNAV/VNAV NA below -17°C or above 54°C. When local altimeter setting not received, use Aitkin altimeter setting; increase LPV DA to 1484, LNAV/VNAV DA to 1636 and LNAV/VNAV visibility ¼ SM; increase all MDAs 60 feet and LNAV Cats C and D visibility ¼ SM. For inop ALS when using Aitkin altimeter setting, increase LNAV Cat D visibility to 1½ SM.

MALSR

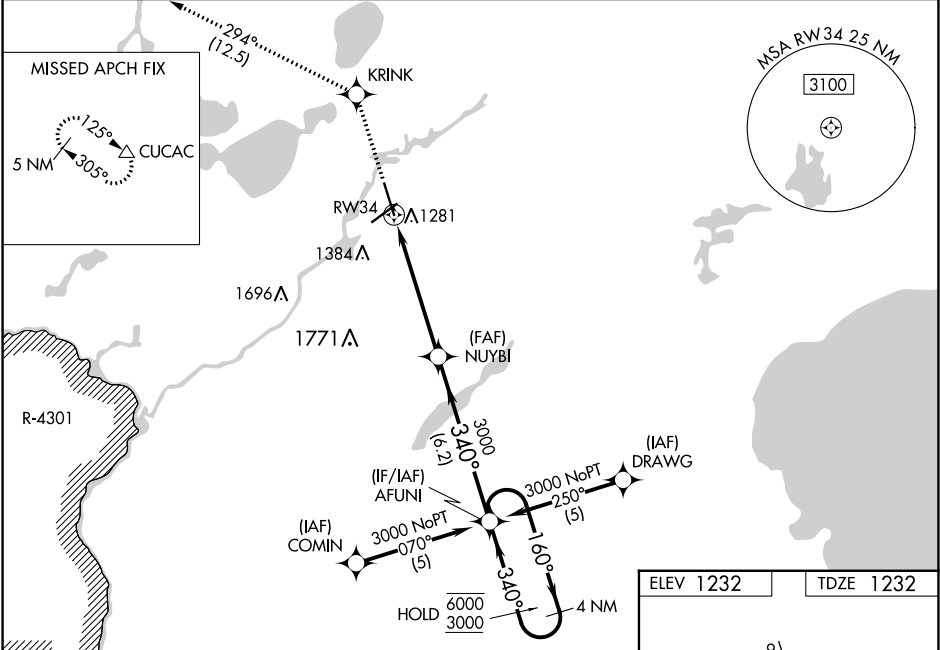


MISSED APPROACH:
Climb to 3300 direct KRINK and on track 294° to CUCAC and hold.

ASOS 126.775

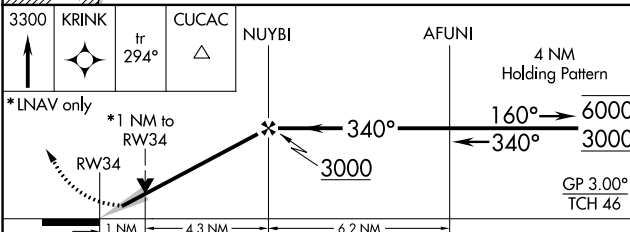
MINNEAPOLIS CENTER 118.05 239.0

UNICOM 122.7(CTAF) 0

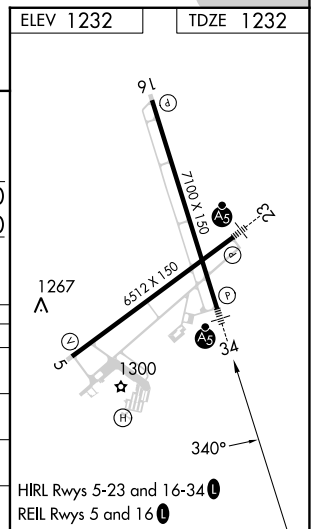


NC-1, 22 FEB 2024 to 21 MAR 2024

NC-1, 22 FEB 2024 to 21 MAR 2024



CATEGORY	A	B	C	D
LPV DA		1432-½	200 (200-½)	
LNAV/VNAV DA		1584-¾	352 (400-¾)	
LNAV MDA	1620-½	388 (400-½)	1620-5/8 388 (400-5/8)	1620-1 388 (400-1)
C CIRCLING	1760-1	528 (600-1)	1760-1½ 528 (600-1½)	1860-2 628 (700-2)



WAAS CH 82018 W05A	APP CRS 050°	Rwy Idg TDZE Apt Elev	6512 1224 1232
--	------------------------	-----------------------------	---

RNAV (GPS) RWY 5

BRAINERD LAKES RGNL (BRD)

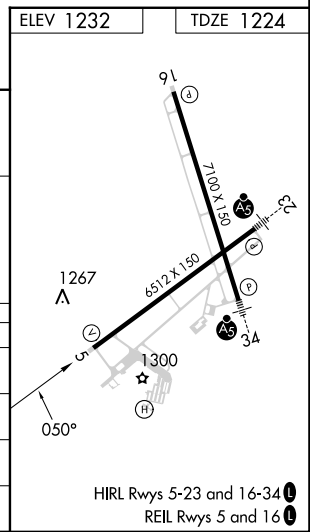
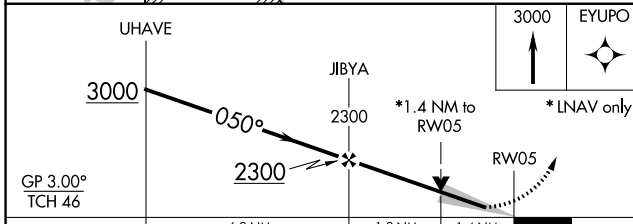
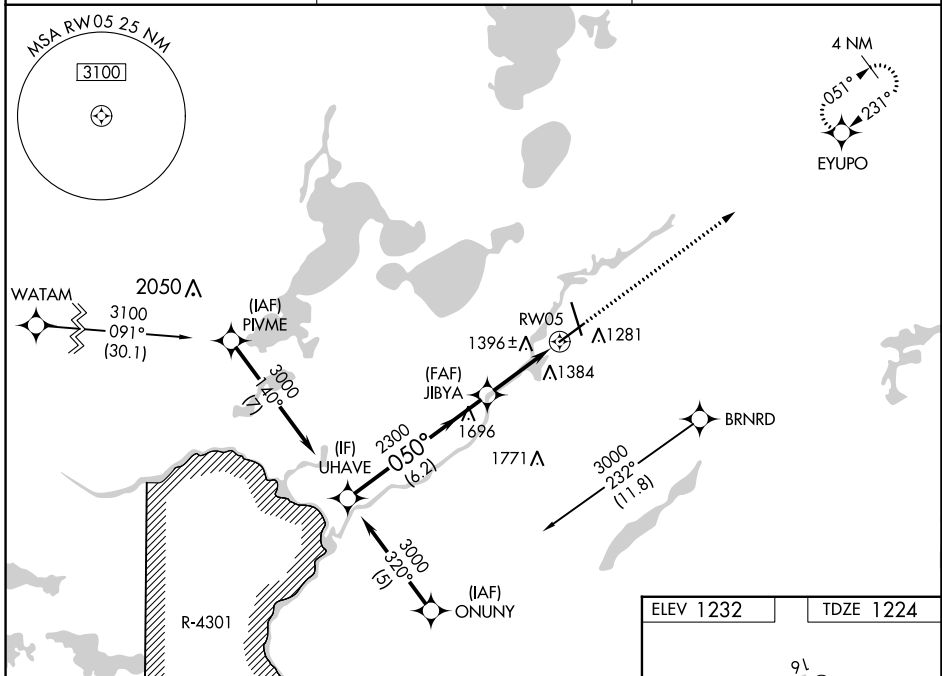
⚠ Baro-VNAV NA when using Aikiri altimeter setting. DME/DME RNP-0.3 NA. Procedure NA when R-4301 is active. For uncompensated Baro-VNAV systems, LNAV/VNAV NA below -17°C (2°F) or above 54°C (130°F). When local altimeter setting not received, use Aikiri altimeter setting and increase all DA 52 feet and all MDA 60 feet, increase LPV and LNAV/VNAV visibility ¼ mile all Cats, and LNAV Cats C and D visibility ¼ mile. VDP NA with Aikiri altimeter setting.

MISSED APPROACH: Climb to 3000 direct EYUPO and hold.

ASOS
126.775

MINNEAPOLIS CENTER
118.05 239.0

UNICOM
122.7(CTAF) 0



CATEGORY	A	B	C	D
LPV DA	1424-¾		200 (200-¾)	
LNAV/VNAV DA	1777-2		553 (600-2)	
LNAV MDA	1700-1	476 (500-1)	1700-1½ 476 (500-1½)	1700-1½ 476 (500-1½)
C CIRCLING	1760-1	528 (600-1)	1760-1½ 528 (600-1½)	1860-2 628 (700-2)

NC-1, 22 FEB 2024 to 21 MAR 2024

NC-1, 22 FEB 2024 to 21 MAR 2024