

# HILLS or LOC/DME Rwy 32

LOC -BKF <b>109.7</b>	APCH CRS <b>323°</b>	Rwy Idg TDZE Appt Elev <b>5663</b> <b>5663</b>
--------------------------	-------------------------	--

AL-538 [USAF]

BUCKLEY SFB (KBKF)

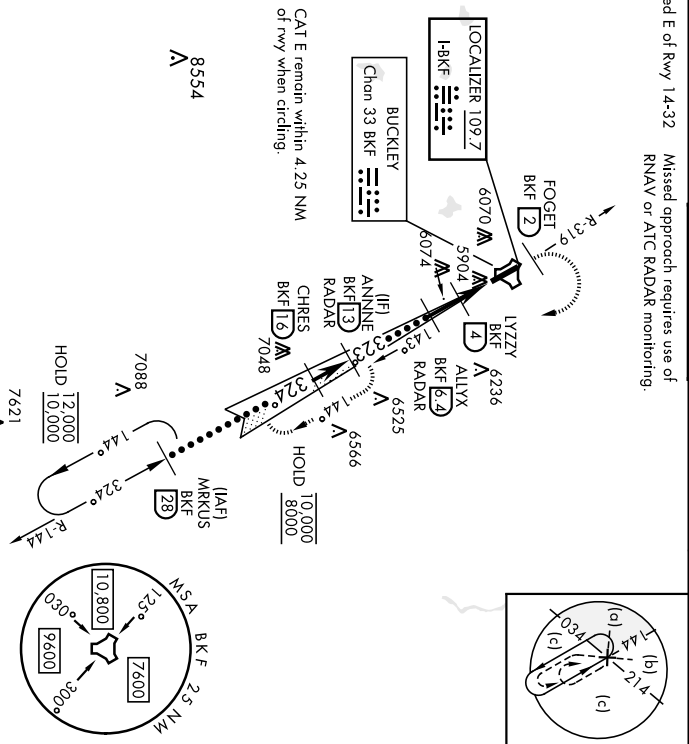
▲ \*\* When AIS Inop, increase CAT CDE RVR to 40 and vis to 3/4 miles.  
 \*\* When AIS Inop, increase CAT CDE vis to 1 1/2 miles.

AS/F-1  
A1

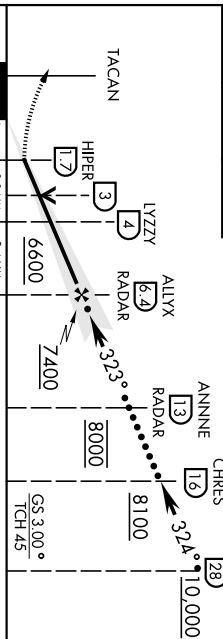
MISSED APPROACH: Climb on BKF TACAN R-319 to FOGET then climbing right turn to 8200 and intercept BKF R-144 to ANNINE and hold or as directed by ATC.

AIS <b>★</b>	DENVER APP CON	TOWER <b>★</b>	GND CON	CINC DEL
<b>119.675 259.3</b>	<b>128.45 251.075</b>	<b>121.0 291.675</b>	<b>121.6 275.8</b>	<b>121.6 275.8</b>

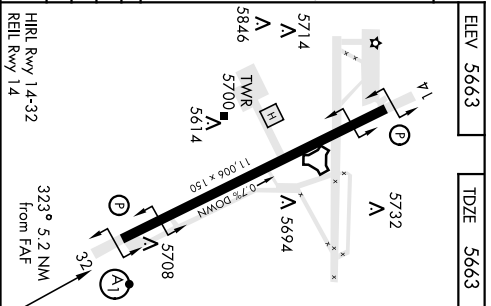
\*\*\* Circling not authorized E of Rwy 14-32  
 Missed approach requires use of RNAV or ATC RADAR monitoring.



EMERG SAFE ALT 100 NM 16,500



CATEGORY	C	D	E
S-ILS 32**	5863/24	200	(200-1/2)
S-LOC 32**	6280-13%	617	(700-1/8)
CIRCLING***	6360-2 497 (700-2)	6400-2 1/2 737 (800-2 1/4)	6420-2 3/4 757 (800-2 3/4)



# HILLS or LOC/DME Rwy 32





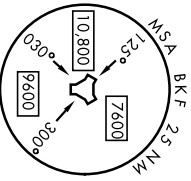
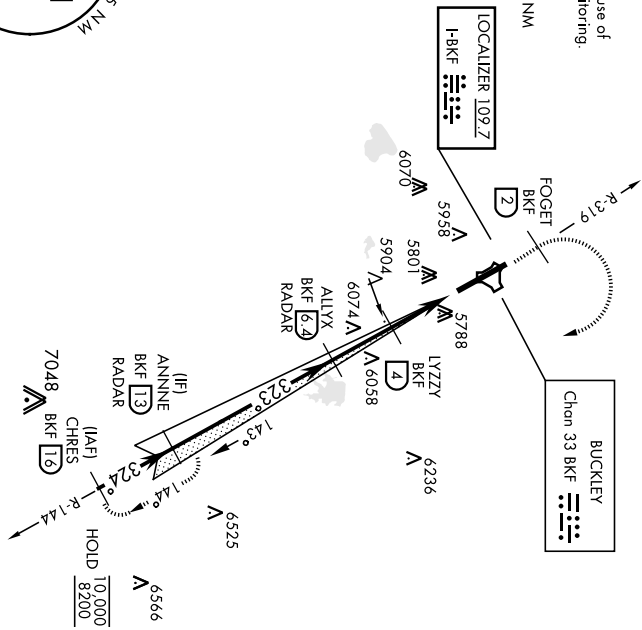


BUCKLEY SFB (KBKF)

LOC I-BKF <b>109.7</b>	APCH CRS <b>323°</b>	Rwy Idg TDZE Aspl Elev <b>5663</b> <b>5663</b>	AL-538 [USAF]	ALSF-1 	MISSED APPROACH: Climb on BKF TACAN R-319 to FOGFT, then climbing right turn to 8200 and intercept BKF R-144 to ANNINE and hold or as directed by ATC.	GND CON <b>121.6 275.8</b>	CINC DEL <b>121.6 275.8</b>
ATIS *	DENVER APP CON	TOWER *	Chom 33 BKF				
<b>119.675 259.3</b>	<b>128.45 251.075</b>	<b>121.0 291.675</b>					

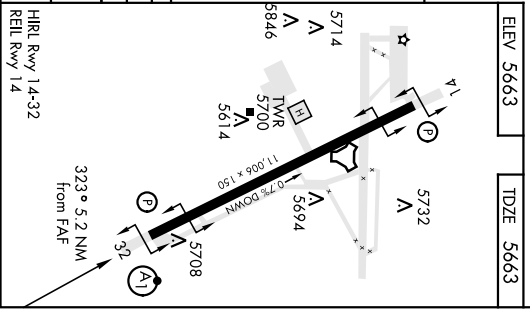
Misled approach requires use of RNAV or ATC RADAR monitoring.

CAT E remain within 4.25 NM of Rwy when circling.



EMERG SAFE ALT 100 NM 16,500

8200	BKF	FOGFT	ANNINE	ALIYX	ANNINE	CHRES
R-319				RADAR	RADAR	
TACAN	HIPER	LYZZY	8100	8000	8100	
	17	4				
			6600	7400		
						CS 3.00°
						TCH 45
CATEGORY	A	B	C	D	E	
SALS 32 *	5863/24		200	(200-1/2)		
S-LOC 32 **	6280/24	6280-1% 617	6280-1% 617	6420-2% 617		
	617 (700-1/2)					
CIRCLING ***	6280-1	6360-2	6400-2% 617	6420-2% 617		
	617 (700-1)	697 (700-2)	737 (800-2% 1/2)	757 (800-2% 1/2)		



APCH CRS <b>323°</b>	Rwy Idg TDZE Arprt Elev	<b>11,006</b> <b>5663</b> <b>5663</b>
-------------------------	-------------------------------	---

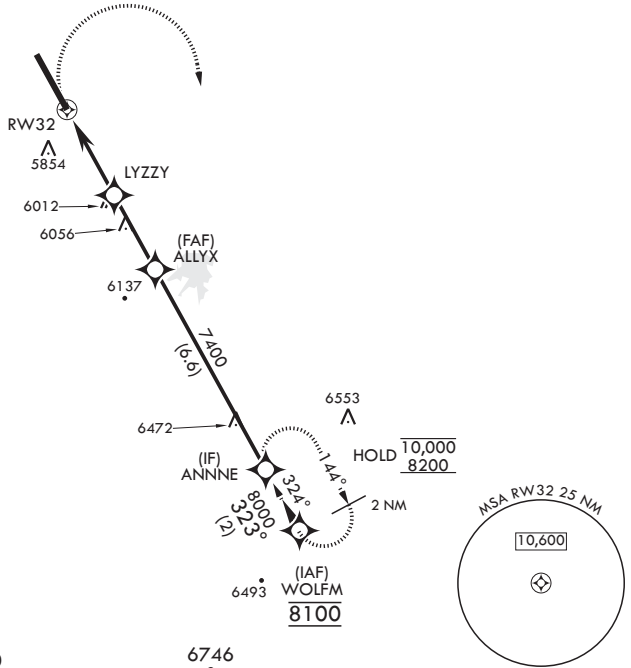
AL-538 (USAF)

BUCKLEY SFB (KBKF)

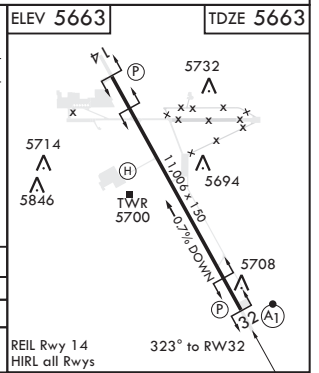
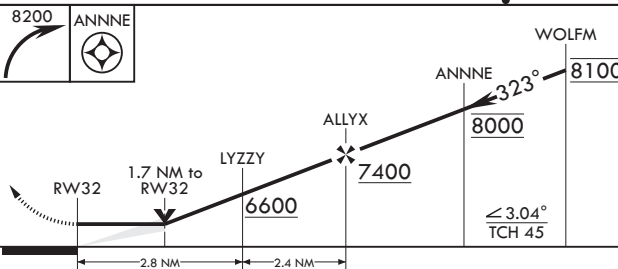
GPS required	ALSF-1	MISSED APPROACH: Climbing right turn to 8200 to ANNNE and hold or as directed by ATC.
* When ALS inop increase CAT AB RVR to 55, vis to 1 mile; CAT CD vis to 1 3/4 miles. ** Circling NA East of Rwy 14-32.		

ATIS* <b>119.675 259.3</b>	DENVER APP CON/DEP CON <b>128.45 251.075</b>	TOWER* <b>121.0 291.675</b>	GND CON <b>121.6 275.8</b>	CLNC DEL <b>121.6 275.8</b>
-------------------------------	---	--------------------------------	-------------------------------	--------------------------------

DME/DME RNP -0.3 NA



EMERG SAFE ALT 100 NM 16,500



CATEGORY	A	B	C	D
LNAV MDA*	6260/24	597 (600-1/2)	6260-1 1/4	597 (600-1 1/4)
CIRCLING**	6260-1	597 (600-1)	6360-2 697 (700-2)	6400-2 1/4 737 (800-2 1/4)

SW-1, 22 FEB 2024 to 21 MAR 2024

SW-1, 22 FEB 2024 to 21 MAR 2024

AURORA, COLORADO

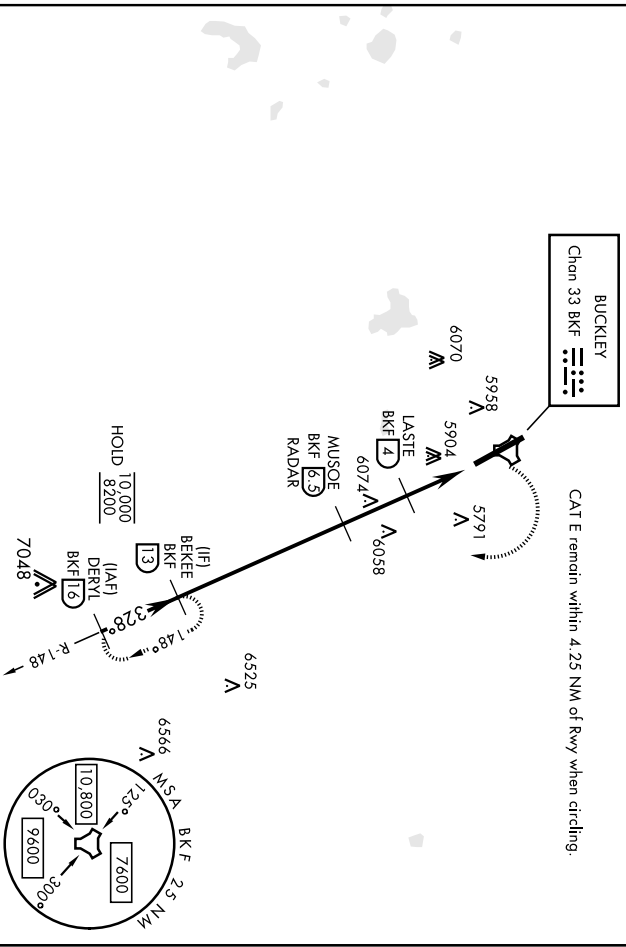
22139

# TACAN RWY 32

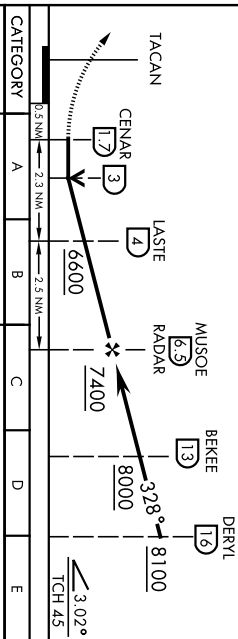
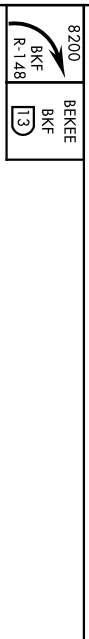
BUCKLEY SFB (KBKF)

TACAN BKF Chon <b>33</b>	APCH CRS <b>328°</b>	Rwy Idg TDZE Appr Elev <b>5663</b>	AL-538 [USAF]	ATIS-1 <b>(A1)</b>	MISSED APPROACH: Climbing right turn to 8200 and intercept BKF TACAN R-148 direct BEKEE and hold or as directed by ATIS.	GND CON	CINC DEL
* When ATIS Inop, increase CAT AB RVR to 55 and vis to 1 mile, CAT CDE vis to 1 1/2 miles ** Circling MVA east of Rwy 14-32.			TOWER*				
ATIS *	DENVER APP CON	<b>128.45 251.075</b>	<b>121.0 291.675</b>	<b>121.6 275.8</b>	<b>121.6 275.8</b>		

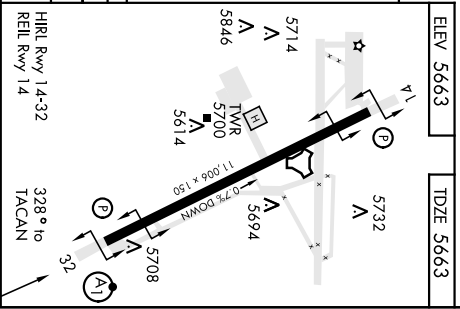
Misded approach requires use of RNAV or ATIS RADAR monitoring.



EMERG SAFE ALT 100 NM 16,500



CATEGORY	A	B	C	D	E
S-32 *	6280/24 617 (700-1/2)		6280-13/6 617 (700-13/6)		
CIRCLING **	6280-1 617 (700-1)		6360-2 6400-21/4 6420-23/4 697 (700-21) 737 (800-21/4) 757 (800-23/4)		



AURORA, COLORADO  
Aurora 3 ZTAPR17  
BUCKLEY SFB (KBKF)  
TACAN RWY 32