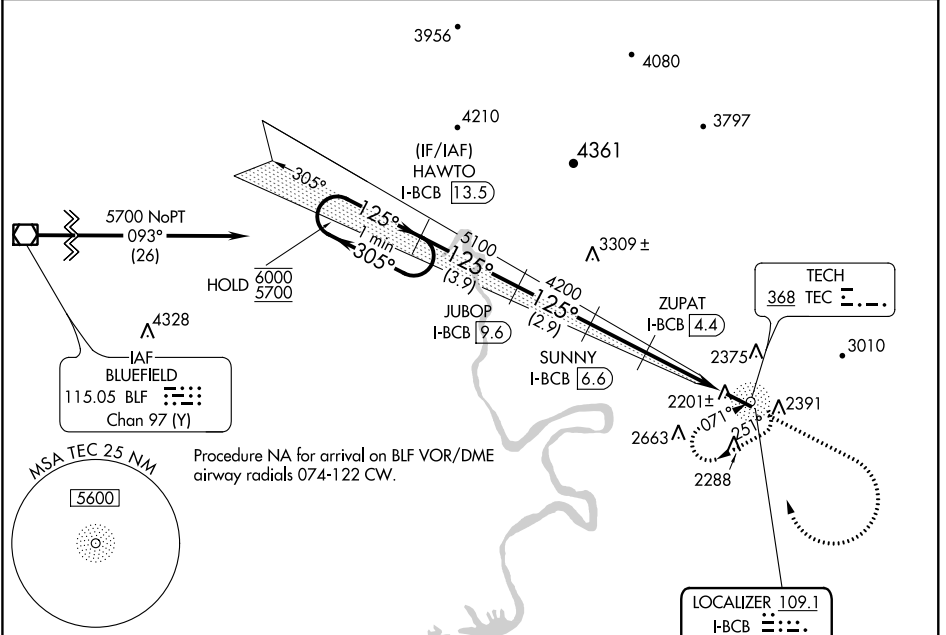


LOC/DME I-BCB 109.1 Chan 28	APP CRS 125°	Rwy Idg TDZE 5501 2119	Apt Elev 2120
---	------------------------	--	-------------------------

LOC RWY 13

VIRGINIA TECH/MONTGOMERY EXEC (C/B)

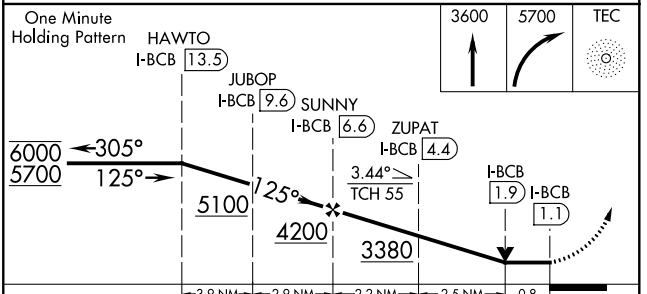
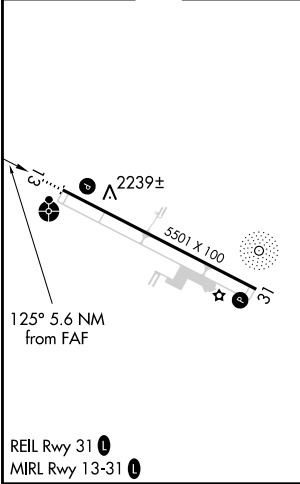
ADF and DME required.		ODALS	MISSED APPROACH: Climb to 3600 then climbing right turn to 5700 direct TEC NDB and hold, continue climb-in-hold to 5700.
▽ Rwy 13 helicopter visibility reduction below 1 SM NA. △ NA Inop table does not apply.			
AWOS-3 133.325	ROANOKE APP CON 126.9 339.8	CLNC DEL 124.85	UNICOM 123.05 (CTAF)



NE-3, 08 SEP 2022 to 06 OCT 2022

NE-3, 08 SEP 2022 to 06 OCT 2022

ELEV 2120	TDZE 2119
-----------	-----------



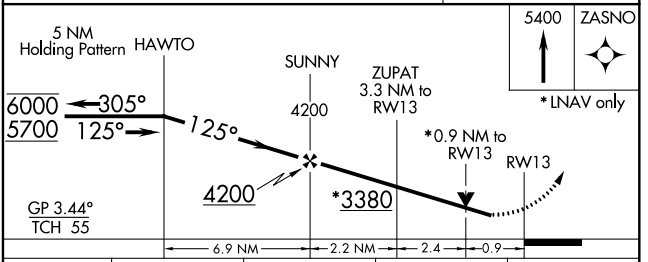
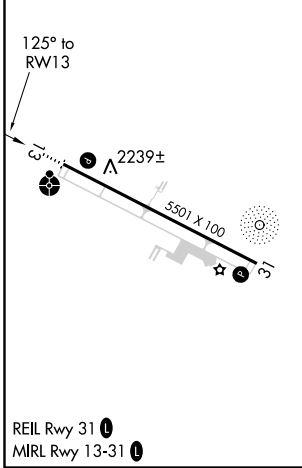
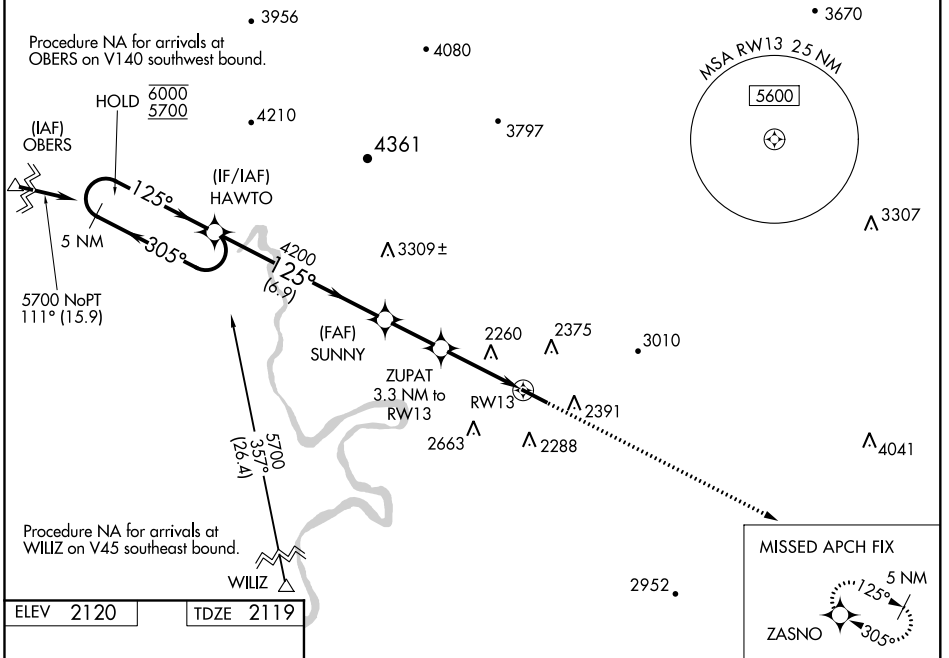
CATEGORY	A	B	C	D
S-13	2480-1 361 (400-1)			NA
C CIRCLING	2760-1 640 (700-1)	2820-1 700 (700-1)	2980-2½ 860 (900-2½)	NA

WAAS CH 86712 W13A	APP CRS 125°	Rwy Idg TDZE Apt Elev	5501 2119 2120
--	------------------------	-----------------------------	---

RNAV (GPS) RWY 13

VIRGINIA TECH/MONTGOMERY EXEC (BCB)

RNP APCH.		ODALS	MISSED APPROACH: Climb to 5400 direct ZASNO and hold, continue climb-in-hold to 5400.
<p>⚠ Rwy 13 helicopter visibility reduction below 1 SM NA. For uncompensated Baro-VNAV systems, LNAV/VNAV NA below -19°C or above 54°C. Inop table does not apply to LPV all Cats, LNAV/VNAV all Cats, and LNAV Cats A and B.</p>			
AWOS-3 133.325	ROANOKE APP CON 126.9 339.8	CLNC DEL 124.85	UNICOM 123.05 (CTAF) 0



CATEGORY	A	B	C	D
LPV DA		2389-1	270 (300-1)	NA
LNAV/VNAV DA		2419-1	300 (300-1)	NA
LNAV MDA		2520-1	401 (400-1)	NA
C CIRCLING	2760-1 640 (700-1)	2820-1 700 (700-1)	2980-2½ 860 (900-2½)	NA

NE-3, 08 SEP 2022 to 06 OCT 2022

NE-3, 08 SEP 2022 to 06 OCT 2022

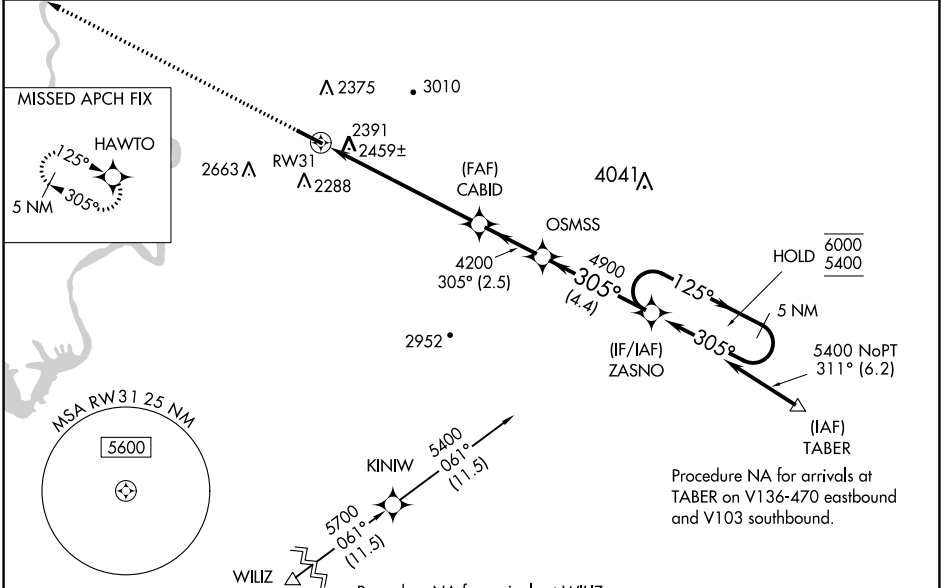
WAAS CH 86743 W31A	APP CRS 305°	Rwy Idg TDZE Apt Elev	5501 2120 2120
--	------------------------	-----------------------------	---

RNAV (GPS) RWY 31

VIRGINIA TECH/MONTGOMERY EXEC (BCB)

RNP APCH.	MISSED APPROACH: Climb to 5900 direct HAWTO and hold, continue climb-in-hold to 5900.
<p>▼ Rwy 31 helicopter visibility reduction below ¾ SM NA.</p> <p>▲ For uncompensated Baro-VNAV systems, LNAV/VNAV NA below -19°C or above 54°C.</p>	

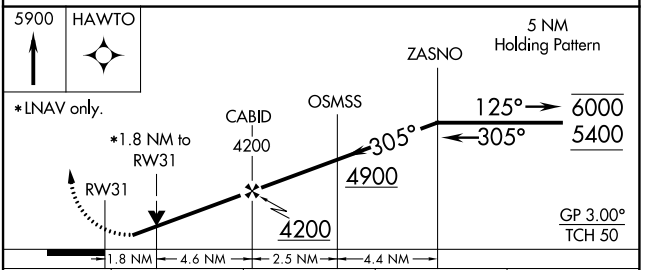
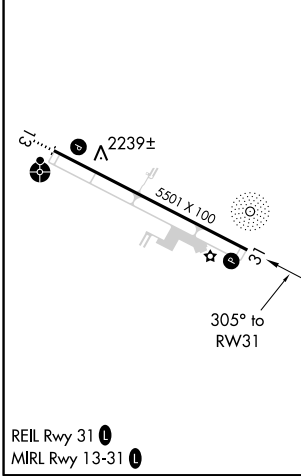
AWOS-3 133.325	ROANOKE APP CON 126.9 339.8	CLNC DEL 124.85	UNICOM 123.05 (CTAF) 0
--------------------------	---------------------------------------	---------------------------	----------------------------------



ELEV 2120	TDZE 2120
-----------	-----------

Procedure NA for arrivals at TABER on V136-470 eastbound and V103 southbound.

Procedure NA for arrivals at WILIZ on V45 southeast bound.



CATEGORY	A	B	C	D
LPV DA	2412-7/8	292 (300-7/8)		NA
LNAV/VNAV DA	2740-13/4	620 (700-13/4)		NA
LNAV MDA	2740-1	620 (700-1)	2740-13/4 620 (700-13/4)	NA
CIRCLING	2760-1 640 (700-1)	2820-1 700 (700-1)	2980-2 1/2 860 (900-2 1/2)	NA

NE-3, 08 SEP 2022 to 06 OCT 2022

NE-3, 08 SEP 2022 to 06 OCT 2022