

APP CRS	Rwy Idg	N/A
066°	TDZE	N/A
	Apt Elev	654

RNAV (GPS)-A

HARRIMAN-AND-WEST (A/QW)



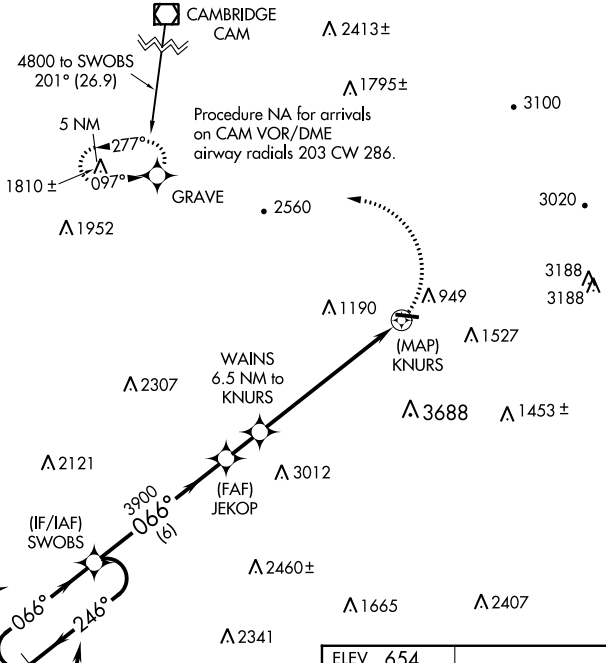
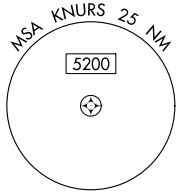
When local altimeter setting not received, use Bennington altimeter setting and increase all MDA 60 feet. Circling NA south of Rwy 11-29. DME/DME RNP-0.3 NA. Procedure NA at night.

MISSED APPROACH: Climbing left turn to 5000 direct GRAVE and hold, continue climb-in-hold to 5000.

ASOS
134.775

ALBANY APP CON
132.825 307.2

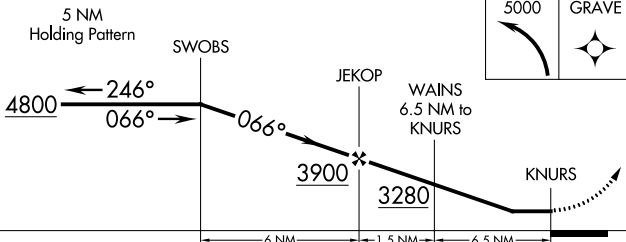
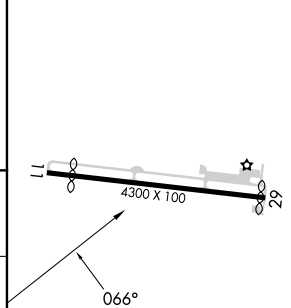
UNICOM
122.8 (CTAF)



NE-1, 22 FEB 2024 to 21 MAR 2024

NE-1, 22 FEB 2024 to 21 MAR 2024

ELEV 654



CATEGORY	A	B	C	D
C CIRCLING	2740-1¼ 2086 (2100-1¼)	2740-1½ 2086 (2100-1½)	2780-3 2126 (2200-3)	NA

MIRL Rwy 11-29

APP CRS	Rwy Idg	N/A
299°	TDZE	N/A
	Apt Elev	654

RNAV (GPS)-B

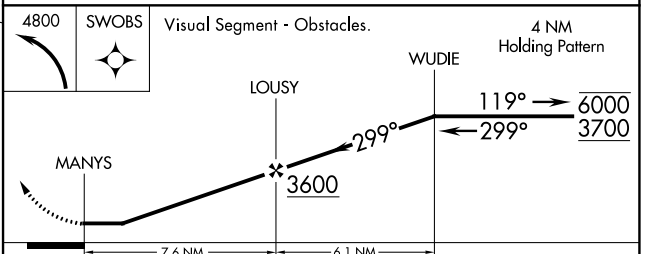
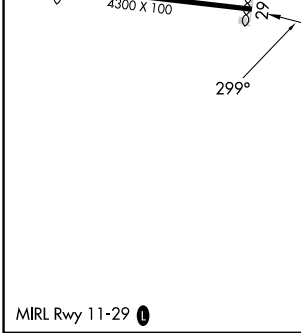
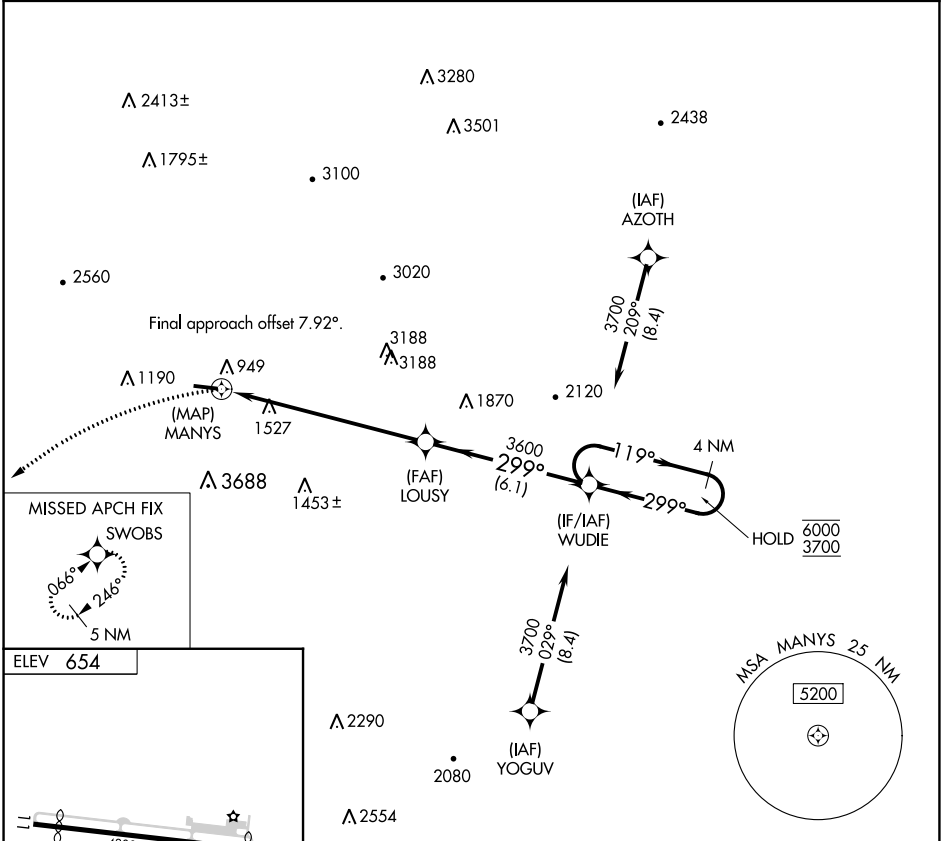
HARRIMAN-AND-WEST (A.Q.W)

RNP APCH.

▼ Circling NA south of Rwy 11-29. Procedure NA at night.
▲ Rwy 29 helicopter visibility reduction below 1 SM NA.

MISSED APPROACH: Climbing left turn to 4800 direct SWOBS and hold.

ASOS 134.775	ALBANY APP CON 132.825 307.2	UNICOM 122.8 (CTAF) 0
------------------------	--	--



CATEGORY	A	B	C	D
0 CIRCLING	3280-1¼ 2626 (2700-1¼)	3280-1½ 2626 (2700-1½)	3280-3 2626 (2700-3)	NA

NE-1, 22 FEB 2024 to 21 MAR 2024

NE-1, 22 FEB 2024 to 21 MAR 2024