

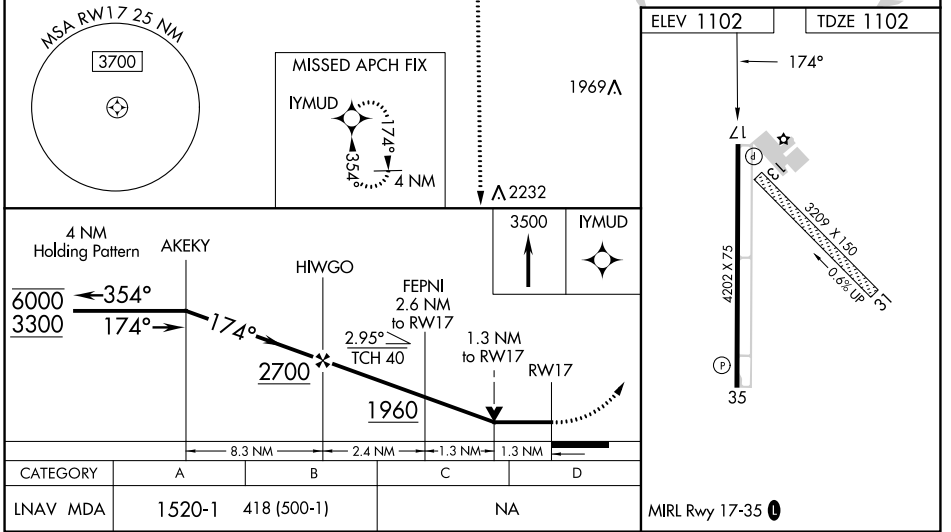
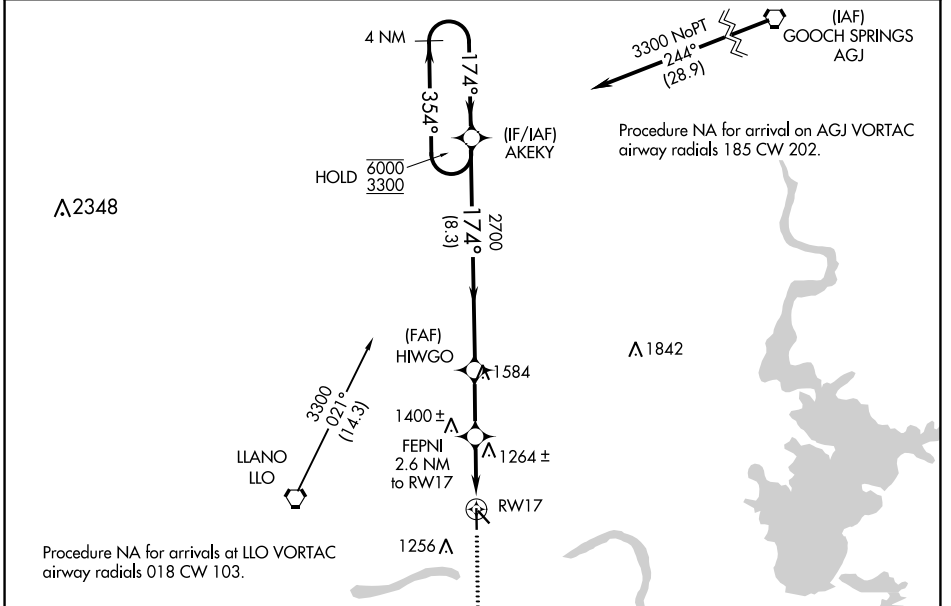
APP CRS	Rwy Idg	4202
174°	TDZE	1102
	Apt Elev	1102

RNAV (GPS) RWY 17

LLANO MUNI (A.QO)

RNP APCH - GPS.	MISSED APPROACH: Climb to 3500 direct IYMUD and hold.
⚠ Rwy 17 helicopter visibility reduction below 3/4 SM NA.	

AWOS-3 119.425	HOUSTON CENTER 132.35 317.5	UNICOM 123.05 (CTAF) 📻
--------------------------	---------------------------------------	---



SC-3, 22 FEB 2024 to 21 MAR 2024

SC-3, 22 FEB 2024 to 21 MAR 2024

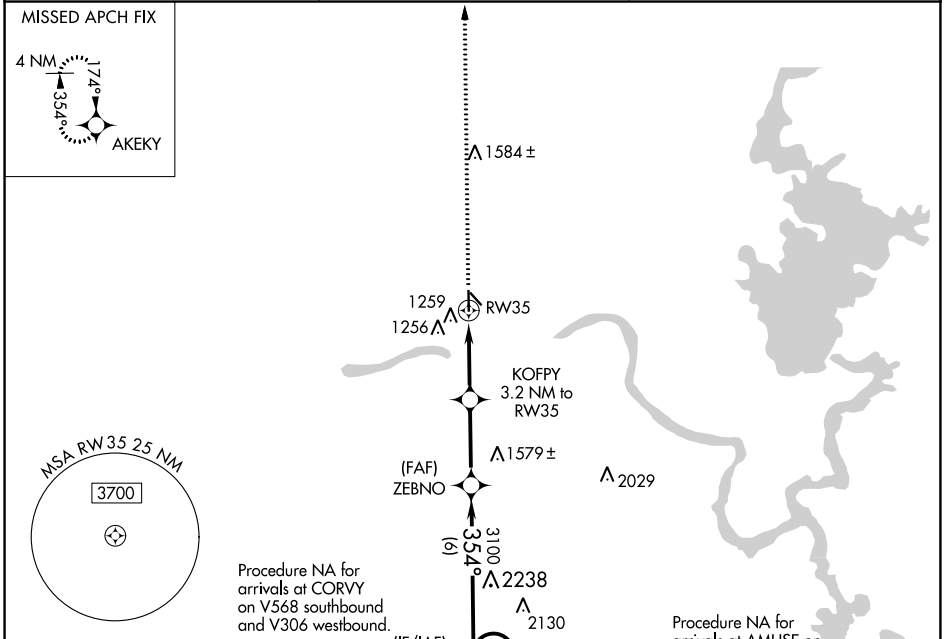
APP CRS 354°	Rwy Idg TDZE Apt Elev	4202 1102 1102
------------------------	-----------------------------	---

RNAV (GPS) RWY 35

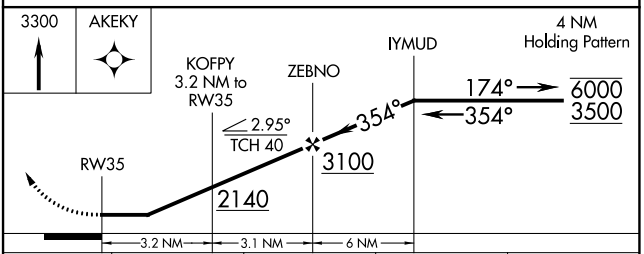
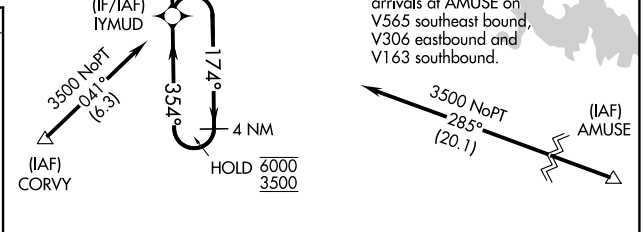
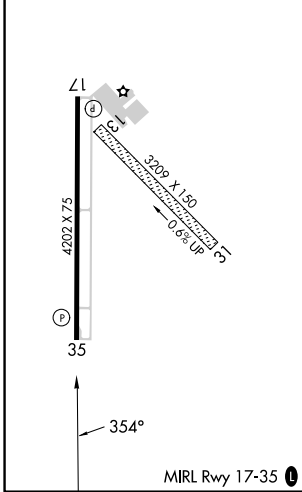
LLANO MUNI (A.QO)

RNP APCH - GPS.	MISSED APPROACH: Climb to 3300 direct AKEY and hold.
▼ Procedure NA at night.	
▲ Rwy 35 helicopter visibility reduction below 1 SM NA.	

AWOS-3 119.425	HOUSTON CENTER 132.35 317.5	UNICOM 123.05 (CTAF) 0
--------------------------	---------------------------------------	---



ELEV 1102	TDZE 1102
-----------	-----------



CATEGORY	A	B	C	D
LNAV MDA	1480-1	378 (400-1)		NA

SC-3, 22 FEB 2024 to 21 MAR 2024

SC-3, 22 FEB 2024 to 21 MAR 2024

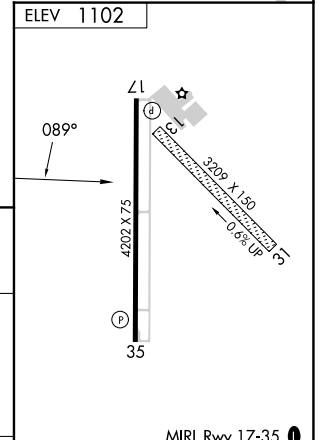
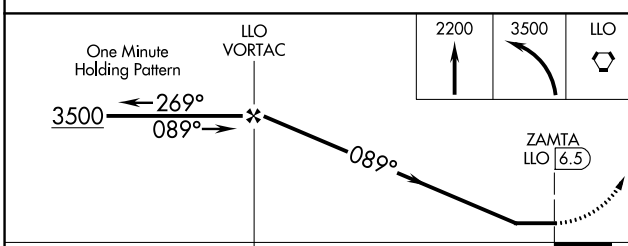
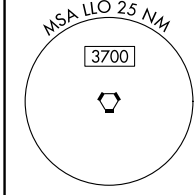
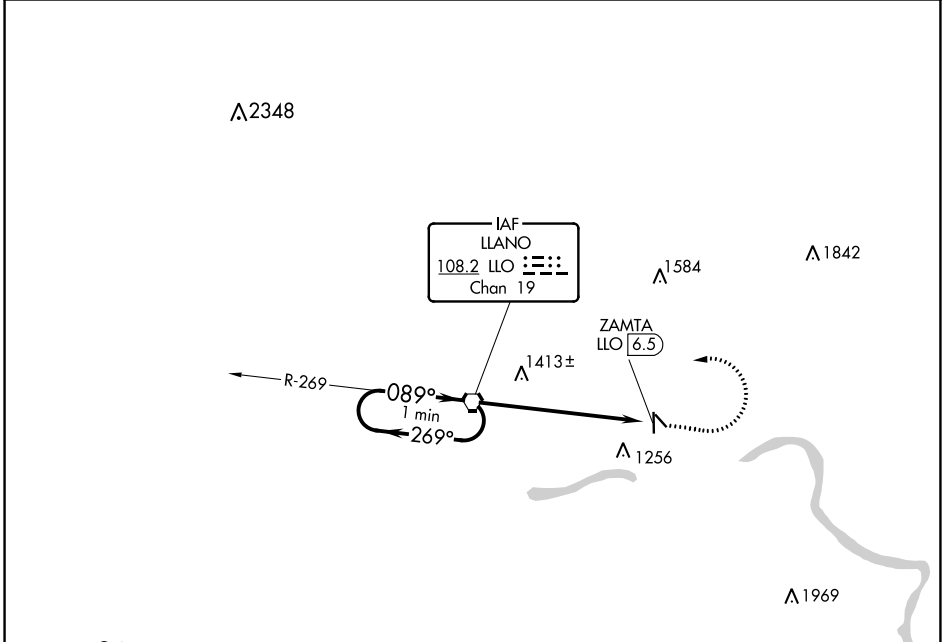
VORTAC LLO 108.2 Chan 19	APP CRS 089°	Rwy Idg TDZE Apt Elev N/A N/A 1102
--	------------------------	--

VOR-A
LLANO MUNI (A.QO)

⚠ Circling Rwy 13, 31 NA. Circling Rwy 35 NA at night. When local altimeter setting not received, use Burnet altimeter setting and increase all MDA 80 feet.

⚠ MISSED APPROACH: Climb to 2200 then climbing left turn to 3500 direct LLO VORTAC.

AWOS-3 119.425	HOUSTON CENTER 132.35 317.5	UNICOM 123.05 (CTAF) 0
--------------------------	---------------------------------------	----------------------------------



CATEGORY	A	B	C	D	FAF to MAP 6.5 NM					
	1720-1	618 (700-1)		NA	Knots	60	90	120	150	180
C CIRCLING					Min:Sec	6:30	4:20	3:15	2:36	2:10

SC-3, 22 FEB 2024 to 21 MAR 2024

SC-3, 22 FEB 2024 to 21 MAR 2024