

APP CRS	Rwy Idg	<b>3558</b>
<b>229°</b>	TDZE	<b>896</b>
	Apt Elev	<b>896</b>

# RNAV (GPS) RWY 23

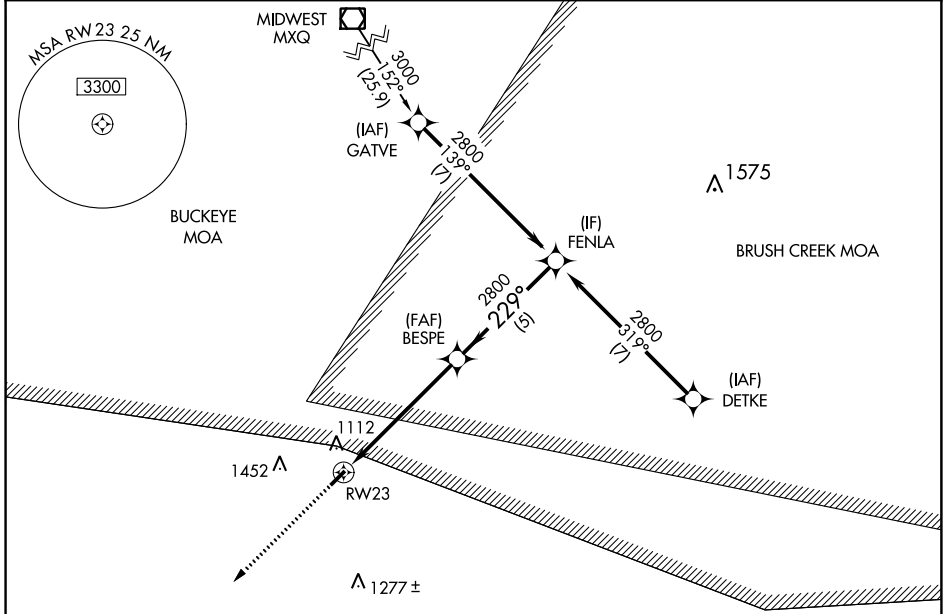
ALEXANDER SALAMON (A.M.T.)

RNP APCH - GPS.

Procedure NA at night. Rwy 23 helicopter visibility reduction below 1 SM NA.  
 NA Use Flemingsburg, Kentucky altimeter setting.

MISSED APPROACH: Climb to 2800 direct EDINE and hold.

FGX AWOS-3 <b>118.125</b>	INDIANAPOLIS CENTER <b>135.575 290.5</b>	UNICOM <b>122.8 (CTAF) 0</b>
------------------------------	---	---------------------------------

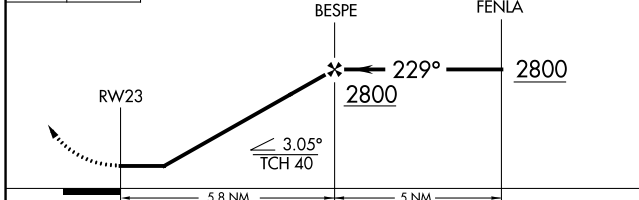


EC-2, 22 FEB 2024 to 21 MAR 2024

EC-2, 22 FEB 2024 to 21 MAR 2024



2800 EDINE  
 VGS1 and descent angles not coincident (VGS1 Angle 3.30/TCH 25).



ELEV 896	TDZE 896
----------	----------

REIL Rwy 5 and 23 0  
 MIRL Rwy 5-23 0

CATEGORY	A	B	C	D
LNAV MDA	1460-1	564 (600-1)	1460-1½ 564 (600-1½)	NA

APP CRS	Rwy Idg	<b>3558</b>
<b>049°</b>	TDZE	<b>890</b>
	Apt Elev	<b>896</b>

# RNAV (GPS) RWY 5

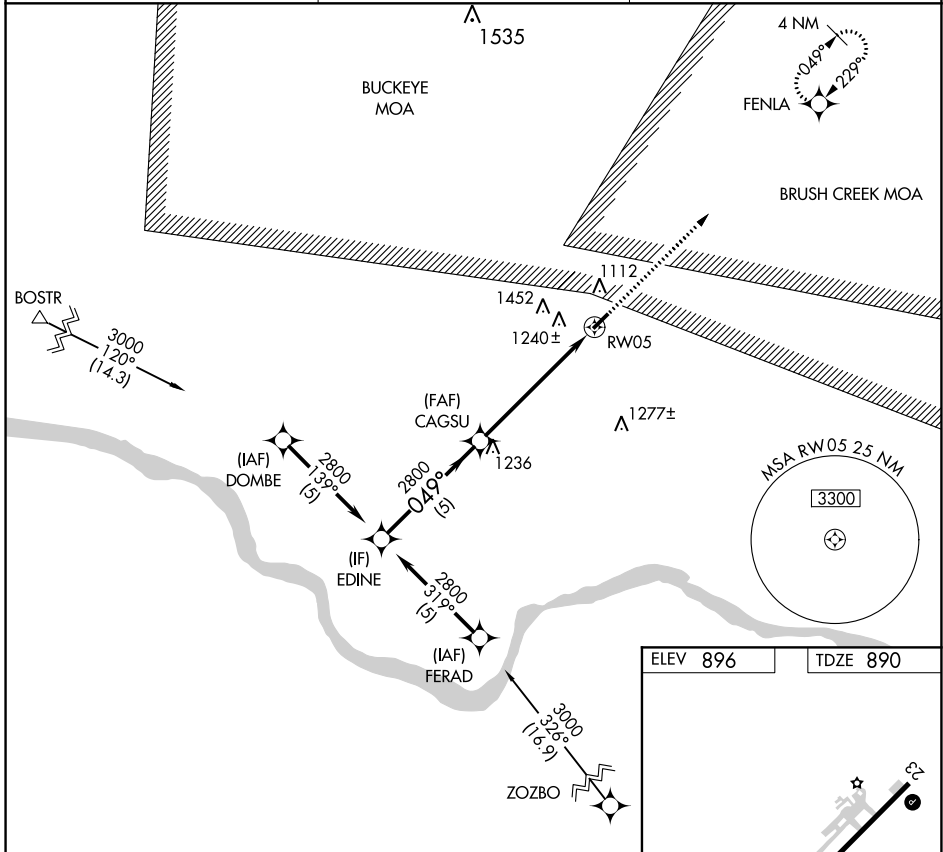
ALEXANDER SALAMON (A.M.T.)

RNP APCH.

**NA** Procedure NA at night. Rwy 5 helicopter visibility reduction below 1 SM NA. Use Flemingsburg, Kentucky altimeter setting.

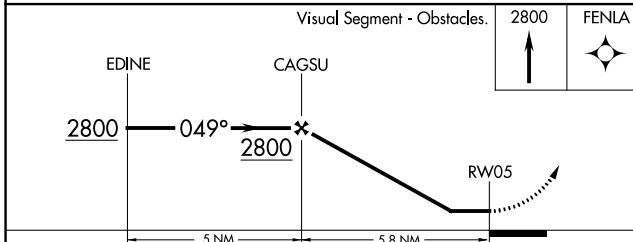
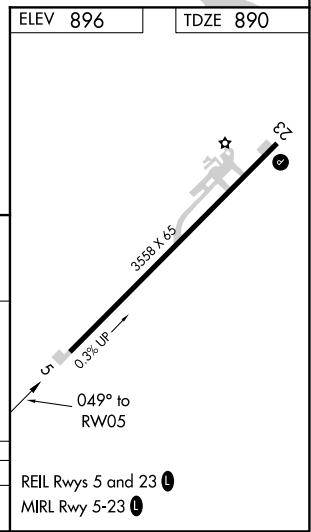
MISSED APPROACH: Climb to 2800 direct FENLA and hold.

FGX AWOS-3 <b>118.125</b>	INDIANAPOLIS CENTER <b>135.575 290.5</b>	UNICOM <b>122.8 (CTAF) 0</b>
------------------------------	---	---------------------------------



EC-2, 22 FEB 2024 to 21 MAR 2024

EC-2, 22 FEB 2024 to 21 MAR 2024



CATEGORY	A	B	C	D
LNAV MDA	1400-1	510 (600-1)	1400-1½ 510 (600-1½)	NA