

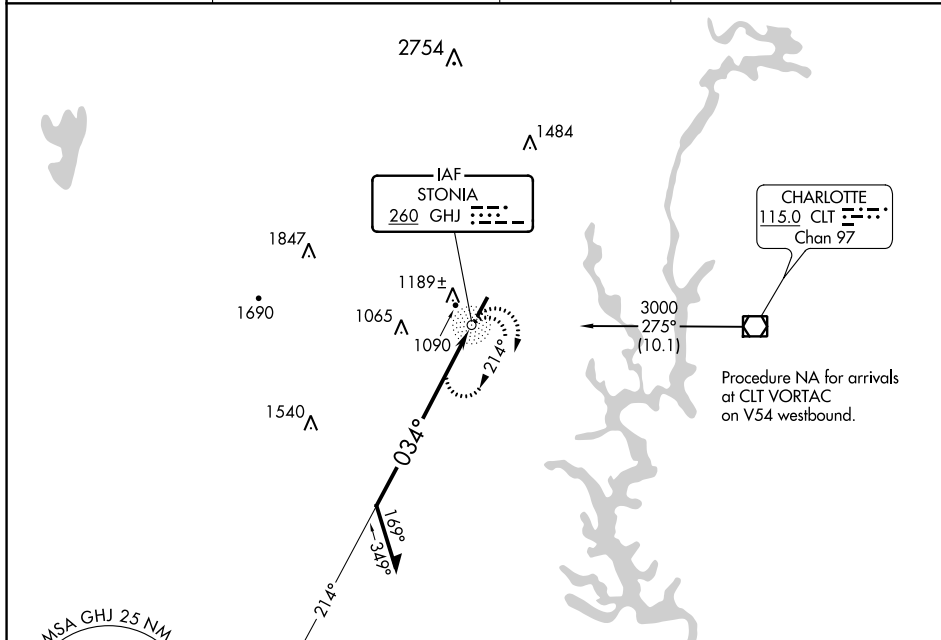
NDB GHJ <b>260</b>	APP CRS <b>034°</b>	Rwy ldg TDZE Apt Elev	<b>3769</b> <b>798</b> <b>798</b>
-----------------------	------------------------	-----------------------------	---

# NDB RWY 3

GASTONIA MUNI (AKH)

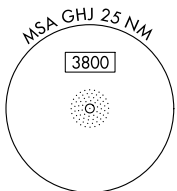
	Inop table does not apply to Cats B and C.	ODALS 	MISSED APPROACH: Climbing right turn to 3000 in GHJ NDB holding pattern.

ASOS <b>135.725</b>	CHARLOTTE APP CON <b>120.05 257.2</b>	CLNC DEL <b>127.2</b>	UNICOM <b>123.0 (CTAF)</b>
------------------------	--	--------------------------	-------------------------------

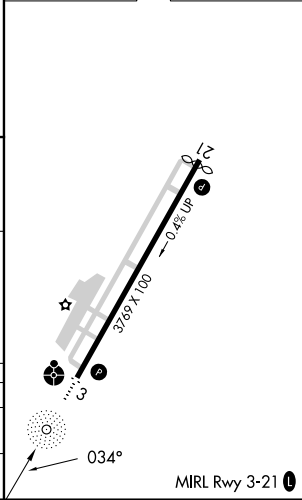
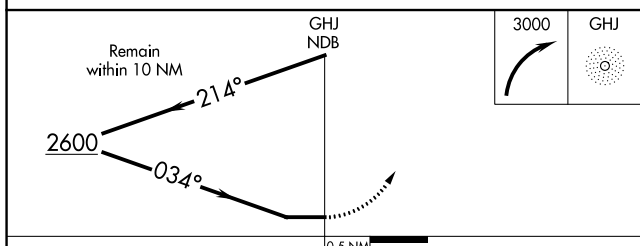


SE-2, 22 FEB 2024 to 21 MAR 2024

SE-2, 22 FEB 2024 to 21 MAR 2024



ELEV 798	TDZE 798
----------	----------



CATEGORY	A	B	C	D
S-3	1540-3/4 742 (800-3/4)	1540-1 1/4 742 (800-1 1/4)	1540-2 1/4 742 (800-2 1/4)	NA
CIRCLING	1540-1 742 (800-1)	1540-1 1/4 742 (800-1 1/4)	1540-2 1/4 742 (800-2 1/4)	NA

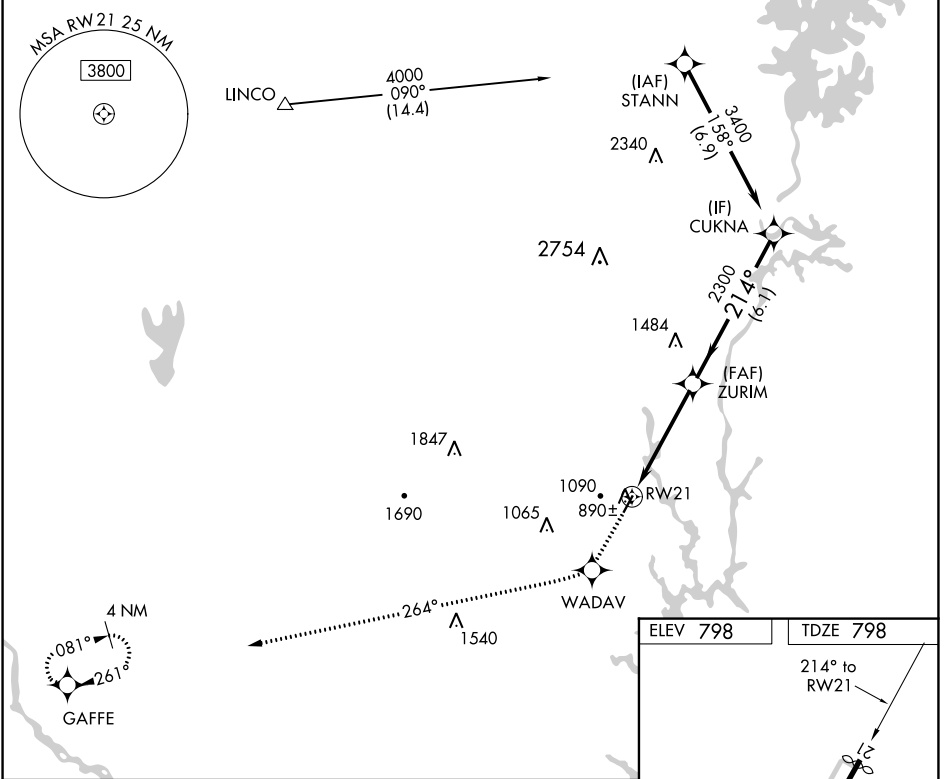
WAAS CH <b>50402</b> <b>W21A</b>	APP CRS <b>214°</b>	Rwy Idg TDZE Apt Elev	<b>3688</b> <b>798</b> <b>798</b>
--	------------------------	-----------------------------	---

# RNAV (GPS) RWY 21

GASTONIA MUNI (AKH)




RNP APCH.		MISSED APPROACH: Climb to 3200 direct WADAV and via 264° track to GAFFE and hold.	
<p>▼ If local altimeter setting not received, use Charlotte/Douglas Intl altimeter setting and increase all DA/MDAs 40 feet. Rwy 21 helicopter visibility reduction below ¾ SM NA.</p>			

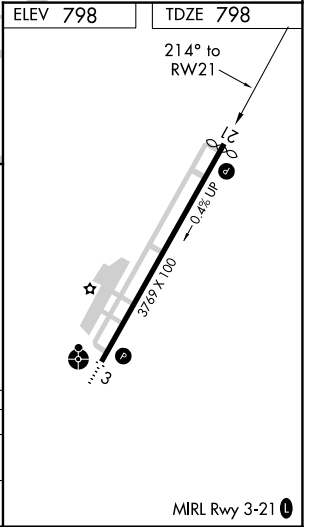
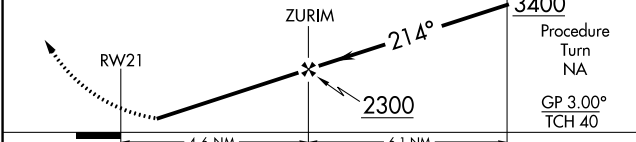
ASOS <b>135.725</b>	CHARLOTTE APP CON <b>120.05 257.2</b>	CLNC DEL <b>127.2</b>	UNICOM <b>123.0 (CTAF)</b> 
------------------------	--	--------------------------	---



SE-2, 22 FEB 2024 to 21 MAR 2024

SE-2, 22 FEB 2024 to 21 MAR 2024

3200	WADAV	GAFFE	VGSI and RNAV glidepath not coincident (VGSI Angle 3.00/TCH 38).
		tr 264° 	



CATEGORY	A	B	C	D
LPV DA	1111-1¼	313 (400-1¼)		NA
LNAV MDA	1420-1	622 (700-1)	1420-1¾ 622 (700-1¾)	NA

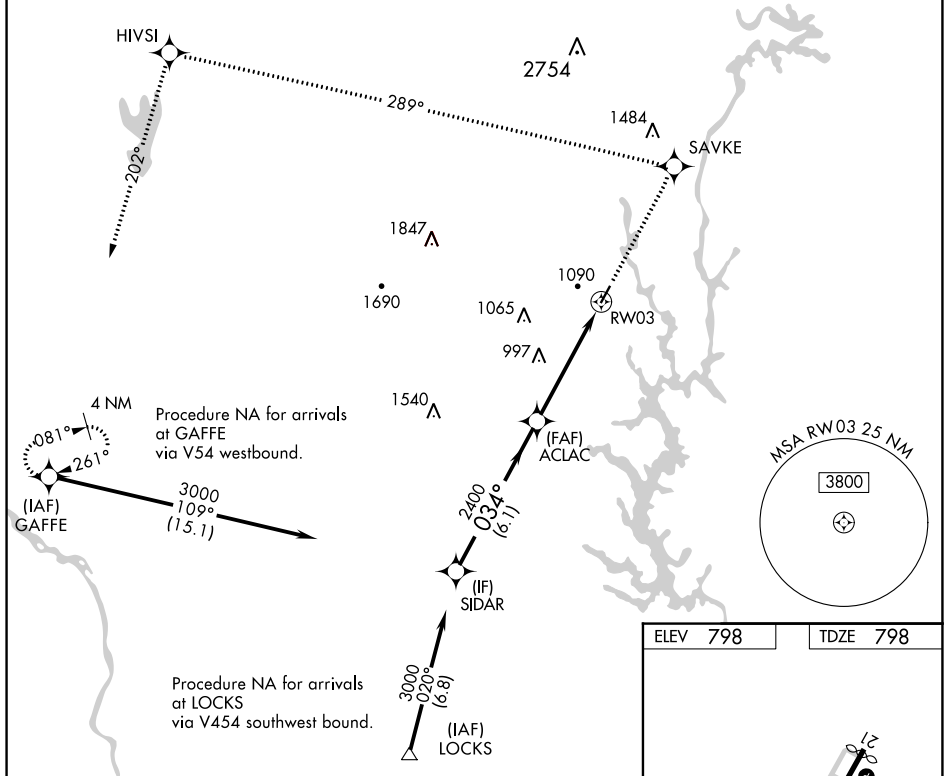
WAAS CH <b>90302</b> <b>W03A</b>	APP CRS <b>034°</b>	Rwy Idg TDZE Apt Elev	<b>3769</b> <b>798</b> <b>798</b>
--	------------------------	-----------------------------	---

# RNAV (GPS) RWY 3

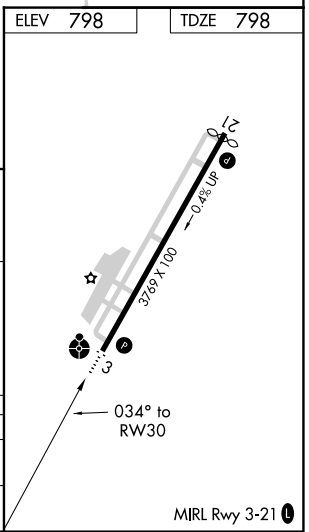
GASTONIA MUNI (AKH)

RNP APCH. ▼ If local altimeter setting not received, use Charlotte Douglas Intl altimeter setting and increase all DAs/MDAs 40 feet. Inoperative table does not apply.	ODALS ☉ ⋮	MISSED APPROACH: Climb to 3200 direct SAVKE and via 289° track to HIVSI and 202° track to GAFFE and hold.
---	--------------	---

ASOS <b>135.725</b>	CHARLOTTE APP CON <b>120.05 257.2</b>	CLNC DEL <b>127.2</b>	UNICOM <b>123.0 (CTAF) 0</b>
------------------------	--	--------------------------	---------------------------------



VGSI and RNAV glidepath not coincident (VGSI Angle 3.00/TCH 26).	3200 SAVKE	HIVSI	GAFFE	
Procedure Turn NA	↑	tr 289°	tr 202°	
GP 3.00° TCH 40	SIDAR	ACLAC	RW03	
	3000	2400		
	034°			
	6.1 NM	4.8 NM		
CATEGORY	A	B	C	D
LPV DA	1118-1¼	320 (400-1¼)		NA
LNAV MDA	1440-1	642 (700-1)	1440-1¾ 642 (700-1¾)	NA



SE-2, 22 FEB 2024 to 21 MAR 2024

SE-2, 22 FEB 2024 to 21 MAR 2024