

# ALLEGHENY NINE DEPARTURE

**TOP ALTITUDE:  
3000**

ATIS  
120.55  
GND CON  
121.7  
ALLEGHENY TOWER  
121.1 239.0  
PITTSBURGH DEP CON  
119.35 285.575 337.4

**BRIGGS**  
112.4 BSV  
Chan 71  
N40°44.44'-W81°25.93'  
L-29, H-10

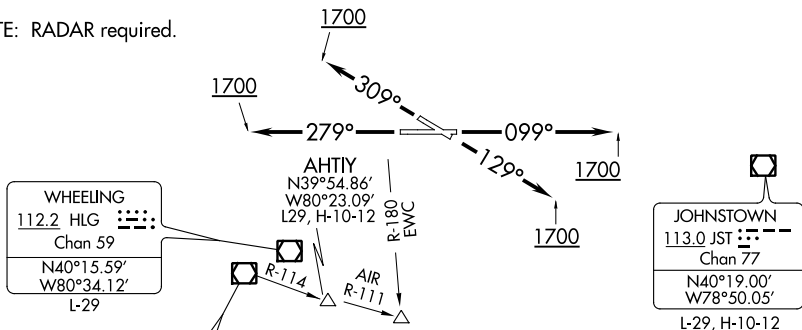
**AKRON**  
114.4 ACO  
Chan 91  
N41°06.47'  
W81°12.09'  
L-30, H-10

**FRANKLIN**  
109.6 FKL  
N41°26.31'  
W79°51.40'  
L-30, H-10

**ELLWOOD CITY**  
115.8 EWC  
Chan 105  
N40°49.50'-W80°12.69'  
L-29, H-10

TYROO

NOTE: RADAR required.



**BELLAIRES**  
117.1 AIR  
Chan 118  
N40°01.02'  
W80°49.03'  
L-29, H-10-12

**KEMAN**  
N39°51.63'  
W80°02.50'  
H-10-12

**TAKEOFF MINIMUMS**  
Rwys 10, 28, 31: Standard.  
Rwy 13: Standard with minimum  
climb of 205' per NM to 1800.

**PARKERSBURG**  
108.6 JPU  
Chan 23  
N39°26.47'-W81°22.49'  
L-29, H-10-12

**MORGANTOWN**  
111.6 MGW  
Chan 53  
N39°33.40'-W79°51.62'  
L-29, H-10-12

**ELKINS**  
114.2 EKN  
Chan 89  
N38°54.87'-W80°05.96'  
L-29, H-10-12

**DEPARTURE ROUTE DESCRIPTION**

**TAKEOFF RUNWAY 10:** Climb heading 099° until 1700 thence....

**TAKEOFF RUNWAY 13:** Climb heading 129° until 1700 thence....

**TAKEOFF RUNWAY 28:** Climb heading 279° until 1700 thence....

**TAKEOFF RUNWAY 31:** Climb heading 309° until 1700 thence....

....expect vectors to assigned route/fix. Maintain 3000. Expect further clearance to requested altitude 10 minutes after departure.

NOTE: Chart not to scale.

# ALLEGHENY NINE DEPARTURE

NE-4, 07 OCT 2021 to 04 NOV 2021

NE-4, 07 OCT 2021 to 04 NOV 2021