

| | | |
|------------------------|-----------------------------|---|
| APP CRS 023° | Rwy Idg TDZE Apt Elev | N/A N/A 1040 |
|------------------------|-----------------------------|---|

RNAV (GPS)-B

JAFFREY AIRFIELD SILVER RANCH (A/FN)

RNP APCH-GPS.

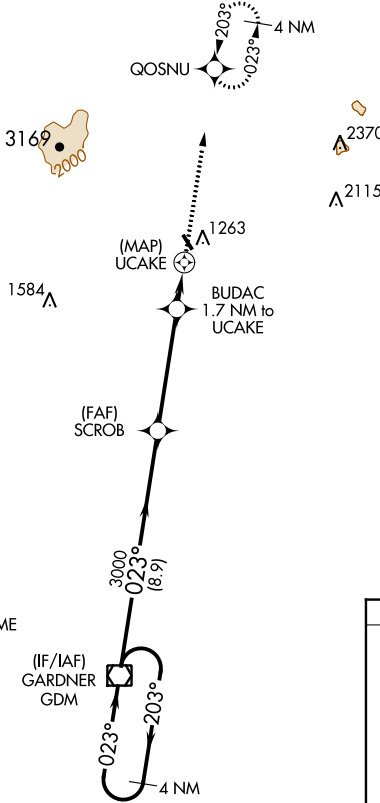
▼ When local altimeter setting not received, use Keene altimeter setting and increase all MDA 120 feet and all Cats visibility ¼ mile. Procedure NA at night.
▲ Rwy 16 and 34 helicopter visibility reduction below 1 SM NA.

MISSED APPROACH: Climb to 3400 direct QOSNU and hold.

ASOS
135.875

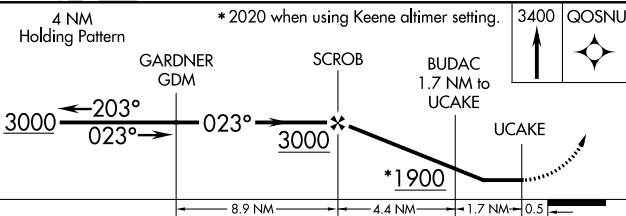
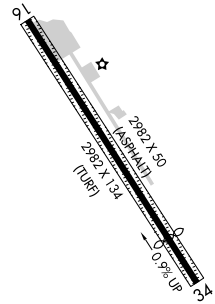
BOSTON CENTER
123.75 338.2

UNICOM
122.8 (CTAF)



NoPT for arrivals at GDM VOR/DME on airway radials 179 CW 263.

ELEV 1040



| | | | | |
|----------|-----------------------|-----------------------|----|---|
| CATEGORY | A | B | C | D |
| CIRCLING | 1760-1 720 (800-1) | 1820-1 780 (800-1) | NA | |

LIRL Rwy 16-34

NE-1, 22 FEB 2024 to 21 MAR 2024

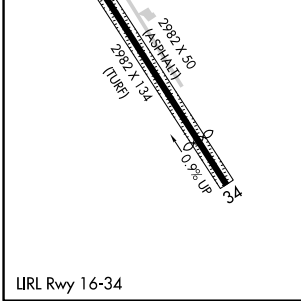
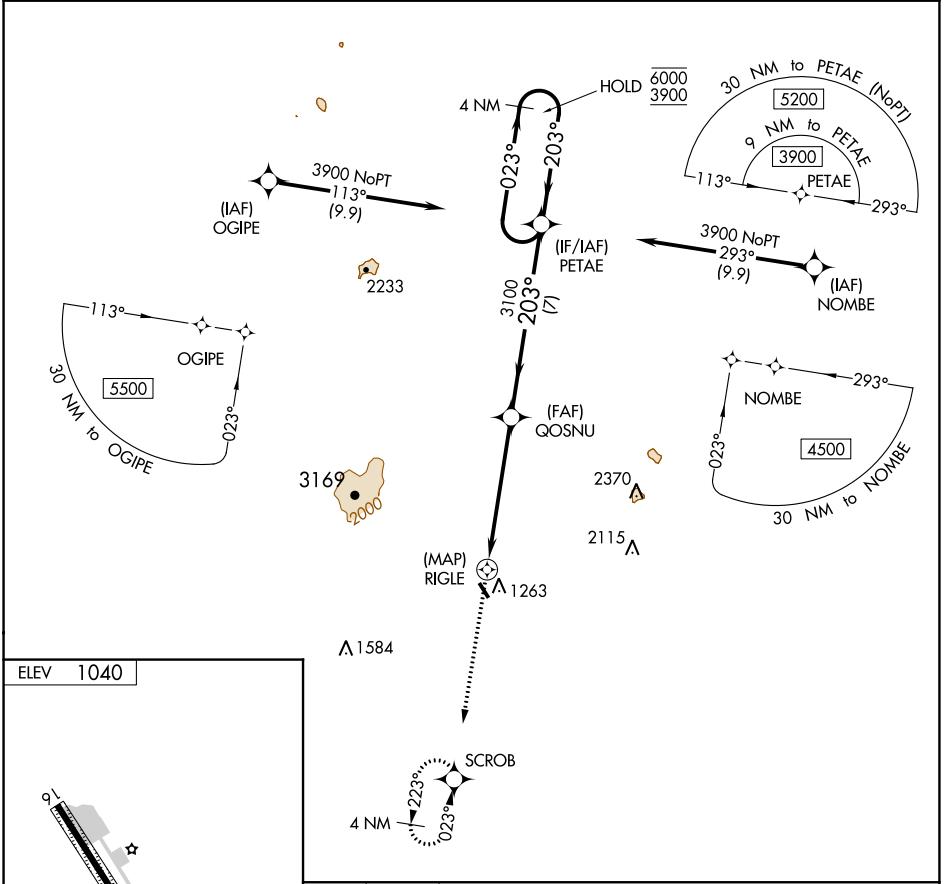
NE-1, 22 FEB 2024 to 21 MAR 2024

| | | |
|---------|----------|------|
| APP CRS | Rwy ldg | N/A |
| 203° | TDZE | N/A |
| | Apt Elev | 1040 |

RNAV (GPS)-C

JAFFREY AIRFIELD SILVER RANCH (A/FN)

| | | |
|-----------------|-------------------------------|---|
| RNP APCH. | | MISSED APPROACH: Climb to 3000 direct SCROB and hold. |
| ASOS 135.875 | BOSTON CENTER 123.75 338.2 | UNICOM 122.8 (CTAF) |



| | | | | | |
|-------------------|-----------------------|-----------------------|-------|------|------|
| 3000 | SCROB | 4 NM Holding Pattern | | | |
| RIGLE | | QOSNU | PETAE | 6000 | 3900 |
| -5.5 NM | | 7 NM | | | |
| CATEGORY | A | B | C | D | |
| C CIRCLING | 1680-1 640 (700-1) | 1840-1 800 (800-1) | NA | | |

NE-1, 22 FEB 2024 to 21 MAR 2024

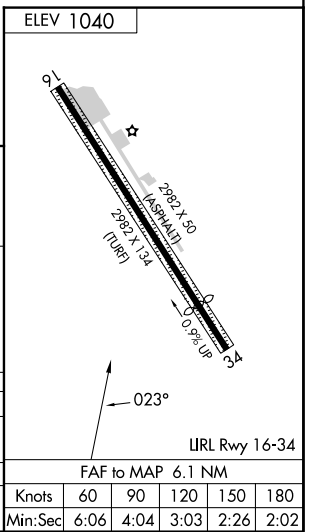
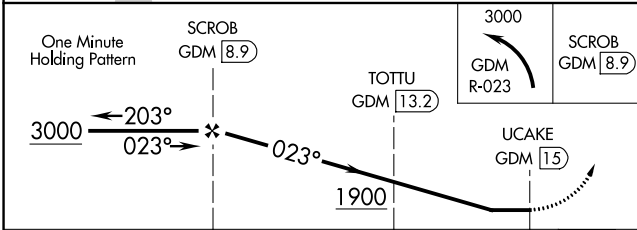
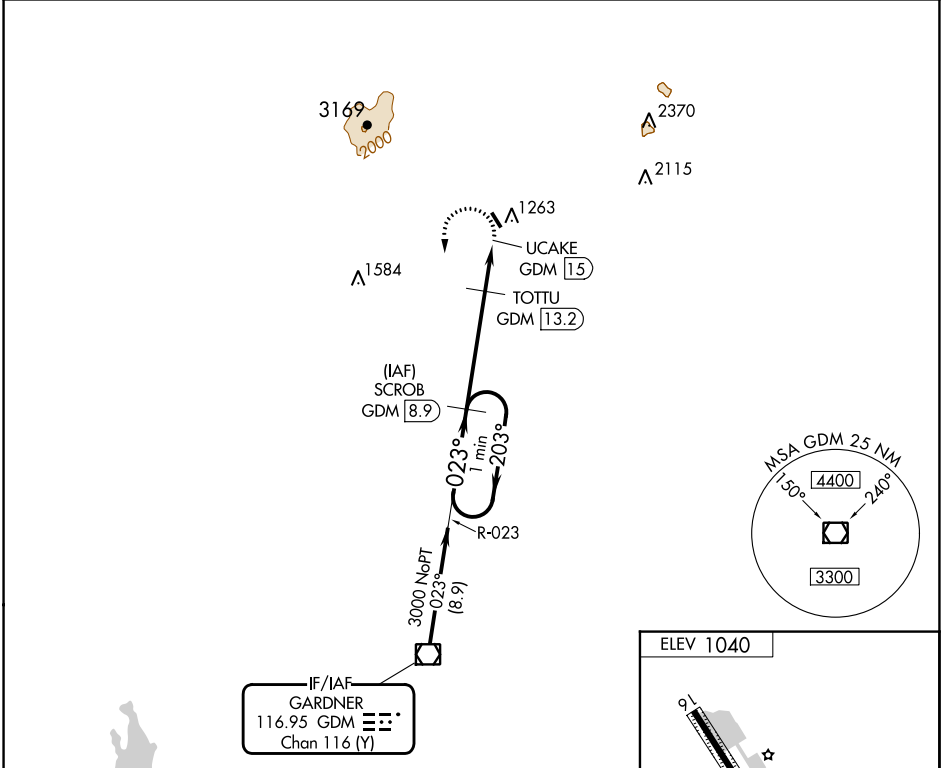
NE-1, 22 FEB 2024 to 21 MAR 2024

| | | | |
|---|------------------------|--|---|
| VOR/DME GDM 116.95 Chan 116 (Y) | APP CRS 023° | Rwy Idg TDZE Apt Elev 1040 | N/A N/A 1040 |
|---|------------------------|--|---|

VOR-A

JAFFREY AIRFIELD SILVER RANCH (A/FN)

| | | |
|------------------------|--------------------------------------|---|
| DME required. | | MISSED APPROACH: Climbing left turn to 3000 on GDM VOR/DME R-023 to SCROB/GDM 8.9 DME and hold. |
| ASOS 135.875 | BOSTON CENTER 123.75 338.2 | UNICOM 122.8 (CTAF) |



| | | | | |
|--------------------|-----------------------|-----------------------|----|---|
| CATEGORY | A | B | C | D |
| CIRCLING | 1900-1¼ | 860 (900-1¼) | NA | |
| TOTTU FIX MINIMUMS | | | | |
| CIRCLING | 1780-1 740 (800-1) | 1820-1 780 (800-1) | NA | |

| | | | | | |
|-------------------|------|------|------|------|------|
| FAF to MAP 6.1 NM | | | | | |
| Knots | 60 | 90 | 120 | 150 | 180 |
| Min:Sec | 6:06 | 4:04 | 3:03 | 2:26 | 2:02 |

NE-1, 22 FEB 2024 to 21 MAR 2024

NE-1, 22 FEB 2024 to 21 MAR 2024