

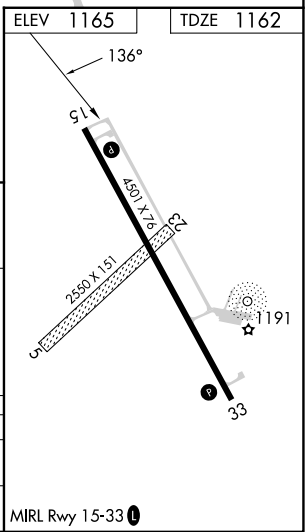
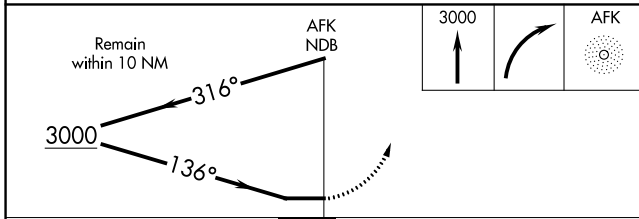
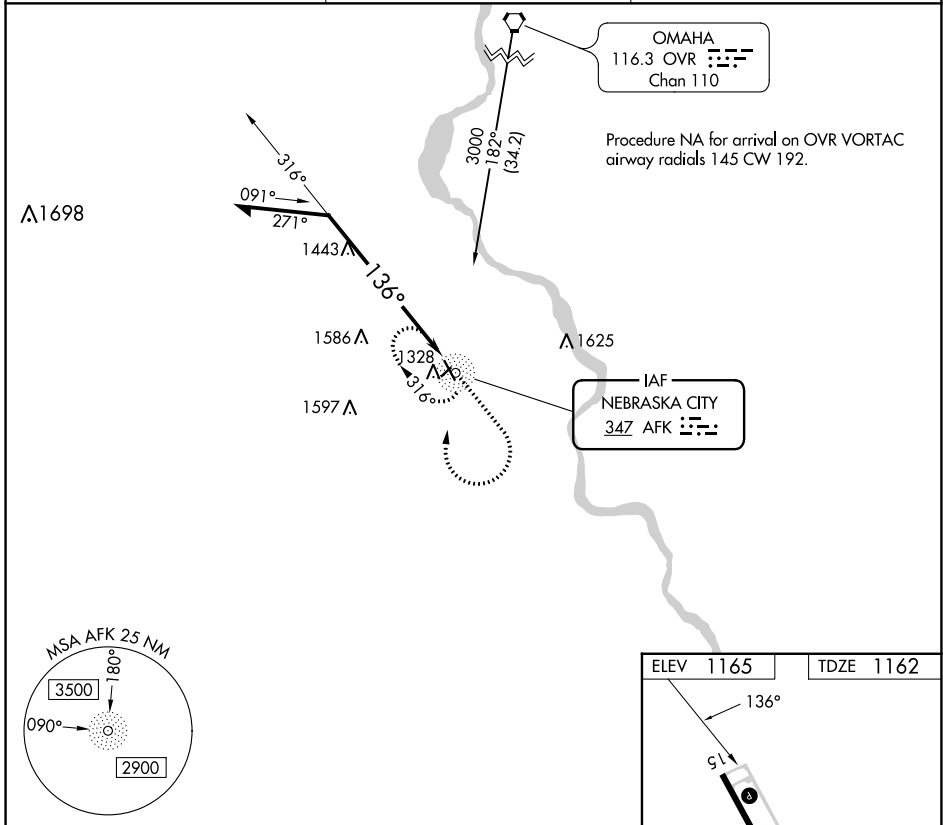
NDB AFK 347	APP CRS 136°	Rwy Idg TDZE Apt Elev	4501 1162 1165
-----------------------	------------------------	-----------------------------	---

NDB RWY 15

NEBRASKA CITY MUNI (AFK)

⚠ MISSED APPROACH: Climb to 3000 then right turn direct AFK NDB and hold.

AWOS-3PT 128.325	OMAHA APP CON 120.1 354.05	UNICOM 122.7 (CTAF) 0
----------------------------	--------------------------------------	---------------------------------



CATEGORY	A	B	C	D
S-15	1800-1	638 (700-1)		NA
C CIRCLING	1800-1	635 (700-1)		NA

NC-2, 22 FEB 2024 to 21 MAR 2024

NC-2, 22 FEB 2024 to 21 MAR 2024

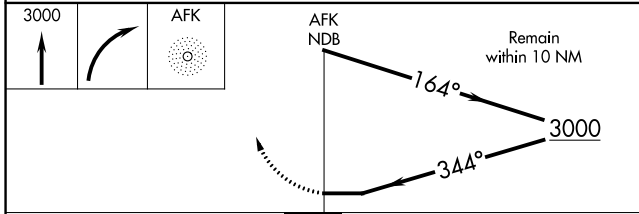
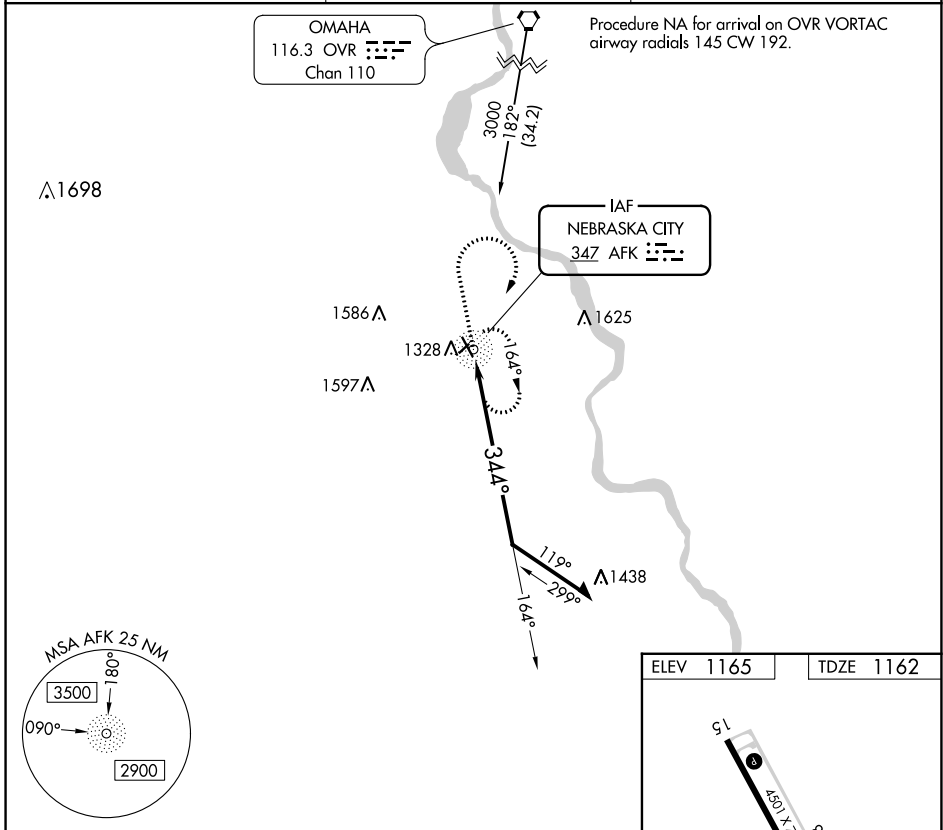
NDB AFK 347	APP CRS 344°	Rwy Idg TDZE Apt Elev	4501 1162 1165
-----------------------	------------------------	-----------------------------	---

NDB RWY 33

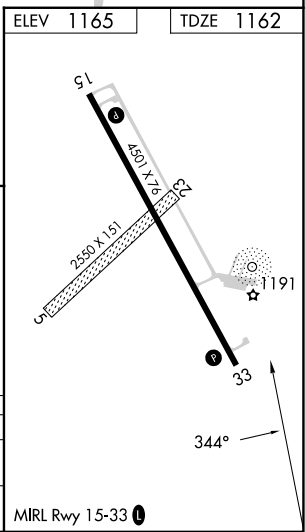
NEBRASKA CITY MUNI (AFK)

MISSED APPROACH: Climb to 3000 then right turn direct AFK NDB and hold.

AWOS-3PT 128.325	OMAHA APP CON 120.1 354.05	UNICOM 122.7 (CTAF) 0
----------------------------	--------------------------------------	---------------------------------



CATEGORY	A	B	C	D
S-33	1840-1	678 (700-1)		NA
C CIRCLING	1840-1	675 (700-1)		NA



NC-2, 22 FEB 2024 to 21 MAR 2024

NC-2, 22 FEB 2024 to 21 MAR 2024

WAAS CH 86407 W15A	APP CRS 146°	Rwy ldg TDZE Apt Elev	4501 1162 1165
--	------------------------	-----------------------------	---

RNAV (GPS) RWY 15

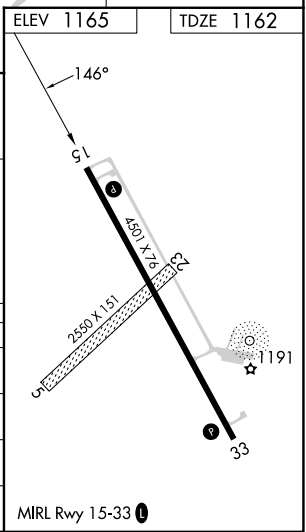
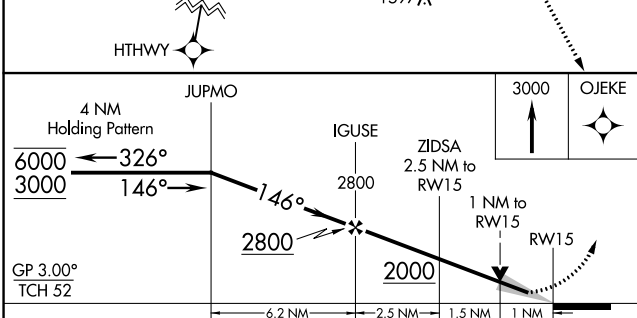
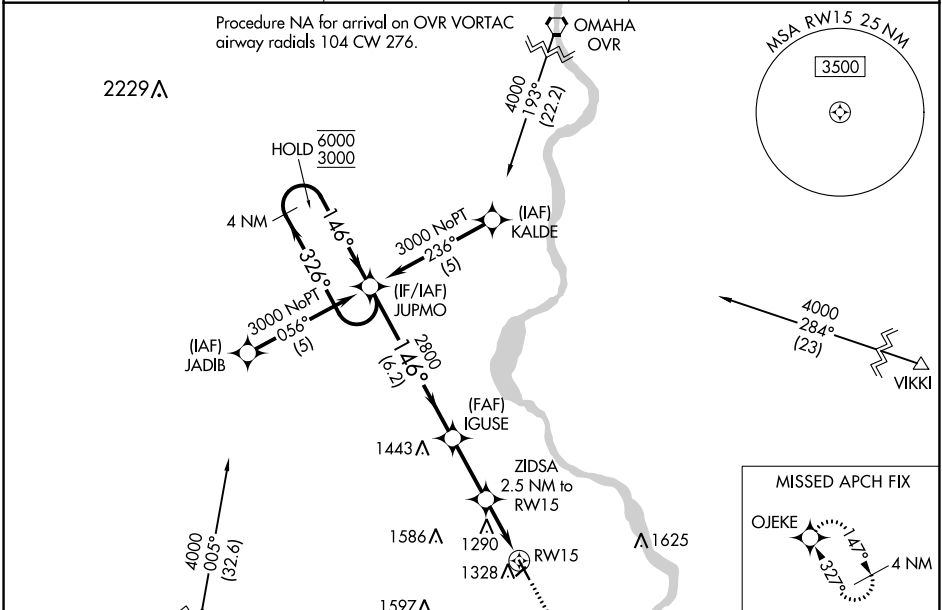
NEBRASKA CITY MUNI (AFK)

RNP APCH - GPS.

⚠ Circling NA to Rws 5 and 23. For uncompensated Baro-VNAV systems, LNAV/VNAV NA below -17°C or above 54°C.

MISSED APPROACH: Climb to 3000 direct OJEKE and hold.

AWOS-3PT 128.325	OMAHA APP CON 120.1 354.05	UNICOM 122.7 (CTAF) 0
----------------------------	--------------------------------------	---------------------------------



CATEGORY	A	B	C	D
LPV DA	1362-1	200 (200-1)		NA
LNAV/VNAV DA	1431-1	269 (300-1)		NA
LNAV MDA	1540-1	378 (400-1)		NA
C CIRCLING	1640-1	475 (500-1)		NA

NC-2, 22 FEB 2024 to 21 MAR 2024

NC-2, 22 FEB 2024 to 21 MAR 2024

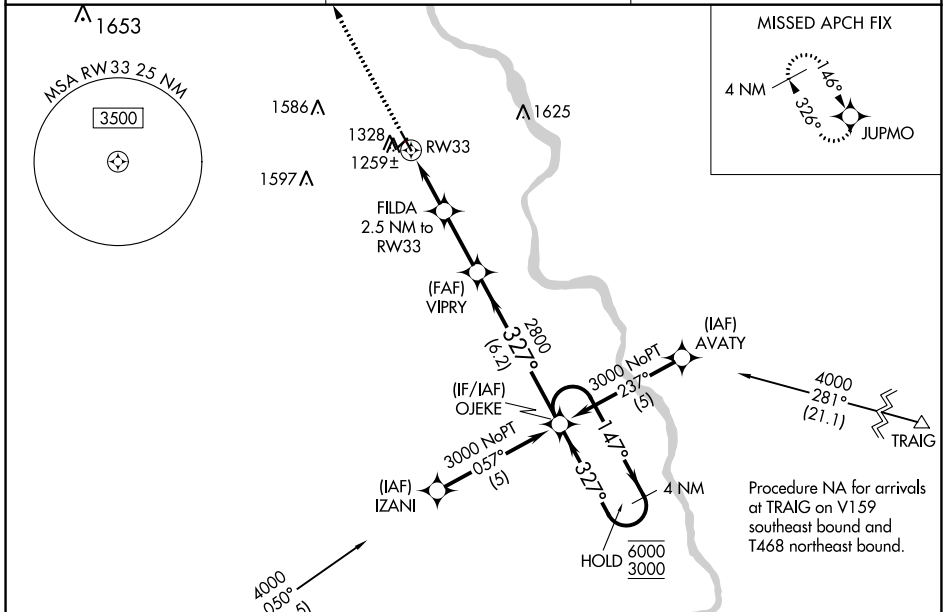
WAAS CH 45707 W33A	APP CRS 327°	Rwy Idg TDZE 1162 Apt Elev 1165
--	------------------------	---

RNAV (GPS) RWY 33

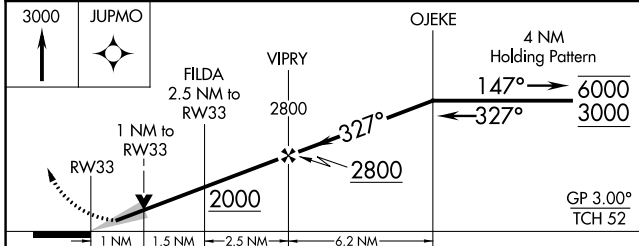
NEBRASKA CITY MUNI (AFK)

RNP APCH - GPS.	MISSED APPROACH: Climb to 3000 direct JUPMO and hold.
-----------------	---

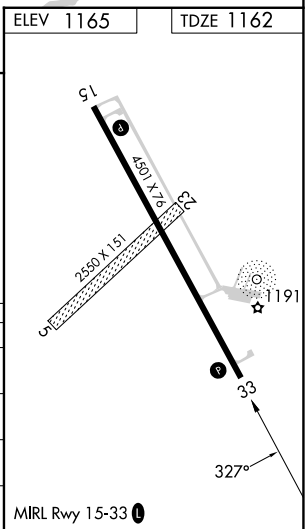
AWOS-3PT 128.325	OMAHA APP CON 120.1 354.05	UNICOM 122.7 (CTAF) 0
----------------------------	--------------------------------------	---------------------------------



ELEV 1165	TDZE 1162
-----------	-----------



CATEGORY	A	B	C	D
LPV DA	1362-1 200 (200-1)			NA
LNAV/VNAV DA	1421-1 259 (300-1)			NA
LNAV MDA	1520-1 358 (400-1)			NA
C CIRCLING	1640-1 475 (500-1)			NA



NC-2, 22 FEB 2024 to 21 MAR 2024

NC-2, 22 FEB 2024 to 21 MAR 2024