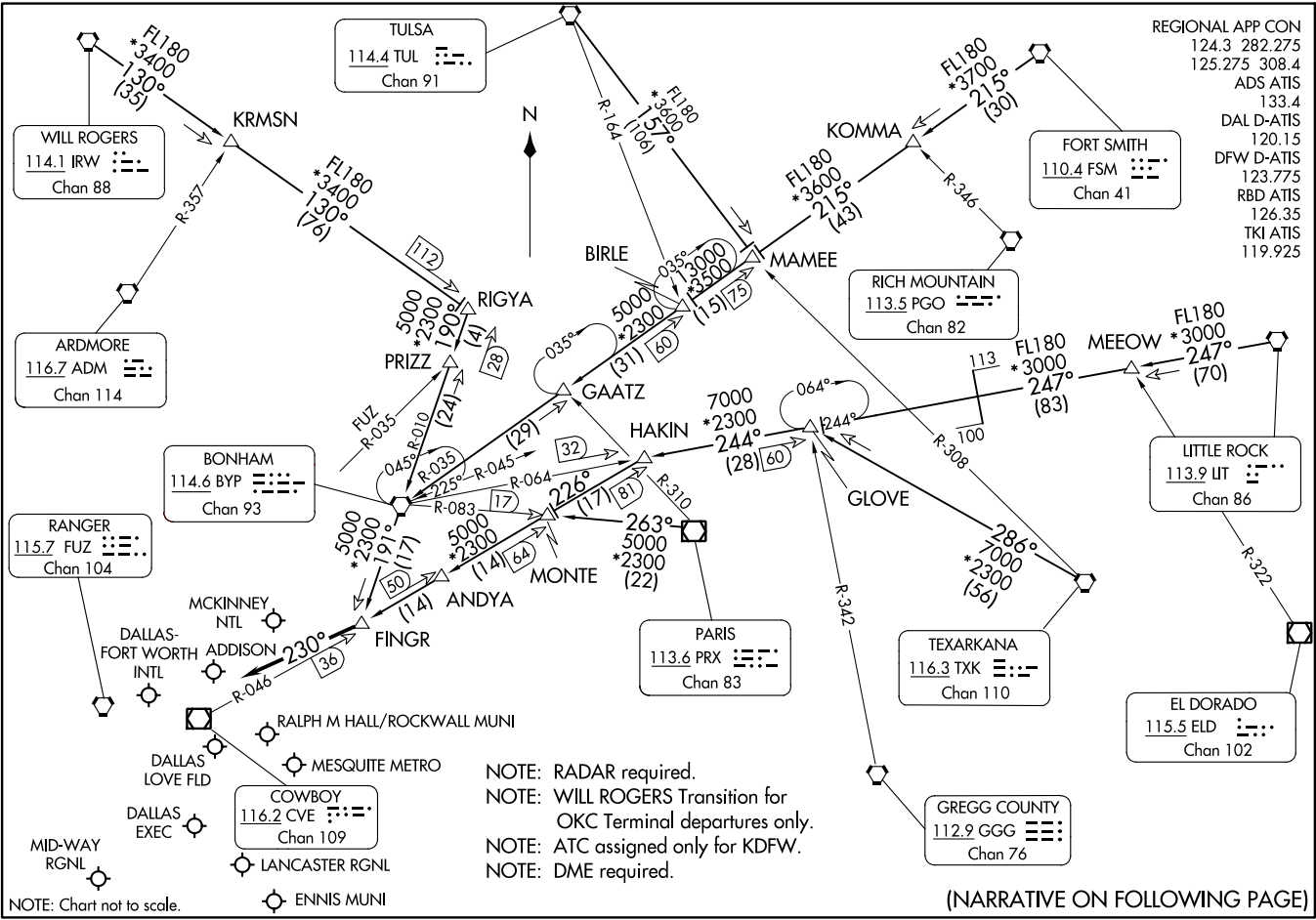


FINGR NINE ARRIVAL  
(FINGR, FINGR9) 20APR23

FINGR NINE ARRIVAL  
(FINGR, FINGR9) 23334



AL-106 (FAA)

DALLAS-FORT WORTH, TEXAS

- NOTE: RADAR required.
- NOTE: WILL ROGERS Transition for OKC Terminal departures only.
- NOTE: ATC assigned only for KDFW.
- NOTE: DME required.

(NARRATIVE ON FOLLOWING PAGE)

DALLAS-FORT WORTH, TEXAS

NOTE: Chart not to scale.

ARRIVAL ROUTE DESCRIPTION

BONHAM TRANSITION (BYP.FINGR9): From over BYP VORTAC on BYP R-191 to FINGR. Thence . . . .

FORT SMITH TRANSITION (FSM.FINGR9): From over FSM VORTAC on FSM R-215 to MAMEE, then on BYP R-035 to BYP VORTAC, then on BYP R-191 to FINGR. Thence . . . .

LITTLE ROCK TRANSITION (LIT.FINGR9): From over LIT VORTAC on LIT R-247 to MEEOW, then on LIT R-247 and BYP R-064 to GLOVE, then on BYP R-064 to HAKIN, then on CVE R-046 to FINGR. Thence . . . .

PARIS TRANSITION (PRX.FINGR9): From over PRX VOR/DME on PRX R-263 to MONTE, then on CVE R-046 to FINGR. Thence . . . .

RIGYA TRANSITION (RIGYA.FINGR9): From over RIGYA on BYP R-010 to BYP VORTAC, then on BYP R-191 to FINGR. Thence . . . .

TEXARKANA TRANSITION (TXK.FINGR9): From over TXK VORTAC on TXK R-286 to GLOVE, then on BYP R-064 to HAKIN, then on CVE R-046 to FINGR. Thence . . . .

TULSA TRANSITION (TUL.FINGR9): From over TUL VORTAC on TUL R-157 to MAMEE, then on BYP R-035 to BYP VORTAC, then on BYP R-191 to FINGR. Thence . . . .

WILL ROGERS TRANSITION (IRW.FINGR9): From over IRW VORTAC on IRW R-130 to RIGYA, then on BYP R-010 to BYP VORTAC, then on BYP R-191 to FINGR. Thence . . . .

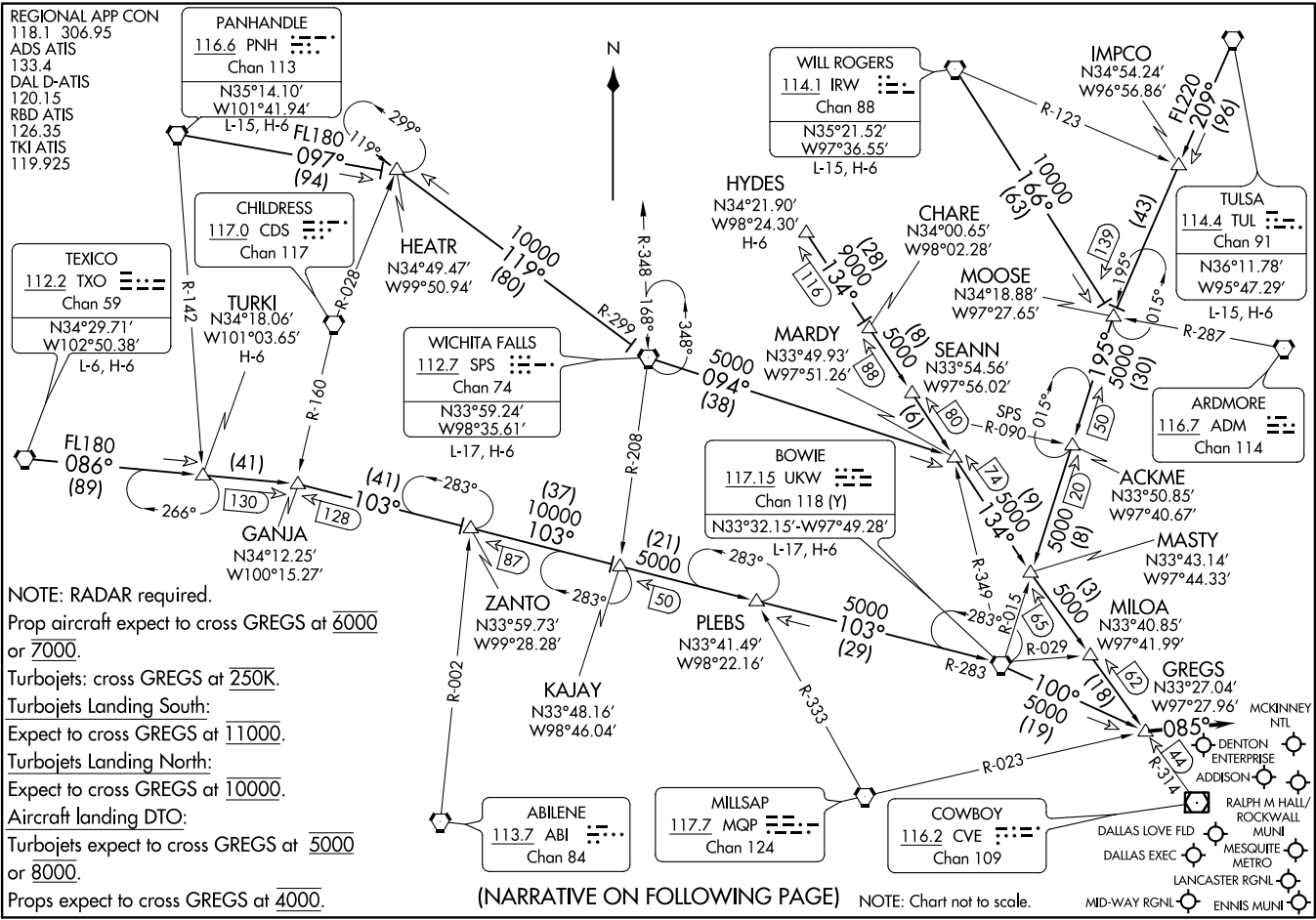
. . . . from FINGR, then on heading 230° or as assigned by ATC. Expect RADAR vectors to final approach course.

SC-2, 22 FEB 2024 to 21 MAR 2024

SC-2, 22 FEB 2024 to 21 MAR 2024

GREGS ONE ARRIVAL  
(GREGS, GREGS 1) 14JUL22

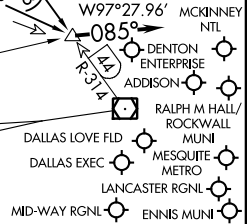
(GREGS, GREGS 1) 22195  
GREGS ONE ARRIVAL



NOTE: RADAR required.  
 Prop aircraft expect to cross GREGS at 6000 or 7000.  
 Turbojets: cross GREGS at 250K.  
 Turbojets Landing South:  
 Expect to cross GREGS at 11000.  
 Turbojets Landing North:  
 Expect to cross GREGS at 10000.  
 Aircraft landing DTO:  
 Turbojets expect to cross GREGS at 5000 or 8000.  
 Props expect to cross GREGS at 4000.

(NARRATIVE ON FOLLOWING PAGE)

NOTE: Chart not to scale.



DALLAS-FORT WORTH, TEXAS

AL-106 (FAA)

DALLAS-FORT WORTH, TEXAS

ARRIVAL DESCRIPTION

BOWIE TRANSITION (UKW.GREGS1): From over UKW VORTAC on UKW R-100 to GREGS. Thence. . . .

HYDES TRANSITION (HYDES.GREGS1): From over HYDES on CVE R-314 to GREGS. Thence. . . .

PANHANDLE TRANSITION (PNH.GREGS1): From over PNH VORTAC on PNH R-097 to HEATR, then on SPS R-299 to SPS VORTAC, then on SPS R-094 to MARDY, then on CVE R-314 to GREGS. Thence. . . .

TEXICO TRANSITION (TXO.GREGS1): From over TXO VORTAC on TXO R-086 to GANJA, then on UKW R-283 to UKW VORTAC, then on UKW R-100 to GREGS. Thence. . . .

TULSA TRANSITION (TUL.GREGS1): From over TUL VORTAC on TUL R-209 to MOOSE, then on UKW R-015 to MASTY, then on CVE R-314 to GREGS. Thence. . . .

TURKI TRANSITION (TURKI.GREGS1): From over TURKI on TXO R-086 to GANJA, then on UKW R-283 to UKW VORTAC, then on UKW R-100 to GREGS. Thence. . . .

WICHITA FALLS TRANSITION (SPS.GREGS1): From over SPS VORTAC on SPS R-094 to MARDY, then on CVE R-314 to GREGS. Thence. . . .

WILL ROGERS TRANSITION (IRW.GREGS1): From over IRW VORTAC on IRW R-166 to MOOSE, then on UKW R-015 to MASTY, then on CVE R-314 to GREGS. Thence. . . .

. . . .from over GREGS, depart GREGS heading 085°. Expect RADAR vectors to final approach course.

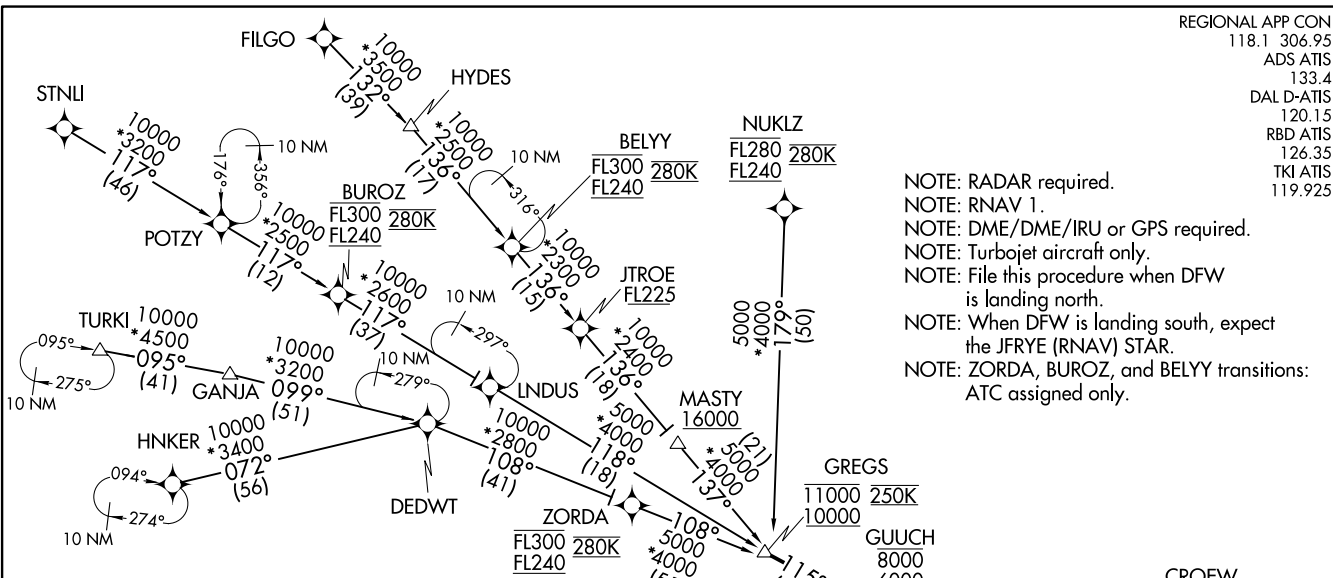
SC-2, 22 FEB 2024 to 21 MAR 2024

SC-2, 22 FEB 2024 to 21 MAR 2024

HERBZ ONE ARRIVAL (RNAV)  
(GREGS.HERBZ1) 17JUN21

(GREGS.HERBZ1) 21224  
HERBZ ONE ARRIVAL (RNAV)

REGIONAL APP CON  
118.1 306.95  
ADS ATIS  
133.4  
DAL D-ATIS  
120.15  
RBD ATIS  
126.35  
TKI ATIS  
119.925



NOTE: RADAR required.  
NOTE: RNAV 1.  
NOTE: DME/DME/IRU or GPS required.  
NOTE: Turbojet aircraft only.  
NOTE: File this procedure when DFW is landing north.  
NOTE: When DFW is landing south, expect the JFRYE (RNAV) STAR.  
NOTE: ZORDA, BUROZ, and BELY transitions: ATC assigned only.

ARRIVAL ROUTE DESCRIPTION

- BELY TRANSITION (BELY.HERBZ1)
- BUROZ TRANSITION (BUROZ.HERBZ1)
- FILGO TRANSITION (FILGO.HERBZ1)
- HNKER TRANSITION (HNKER.HERBZ1)
- HYDES TRANSITION (HYDES.HERBZ1)
- NUKLZ TRANSITION (NUKLZ.HERBZ1)
- STNLI TRANSITION (STNLI.HERBZ1)
- TURKI TRANSITION (TURKI.HERBZ1)
- ZORDA TRANSITION (ZORDA.HERBZ1)

LANDING ALL AIRPORTS: From GREGS on track 115° to cross GUUCH between 6000 and 8000, then on track 115° to cross HERBZ at 6000 and at 240K, then on track 113°. Expect RADAR vectors to final approach course.

NOTE: Chart not to scale.

DALLAS, TEXAS

DALLAS, TEXAS

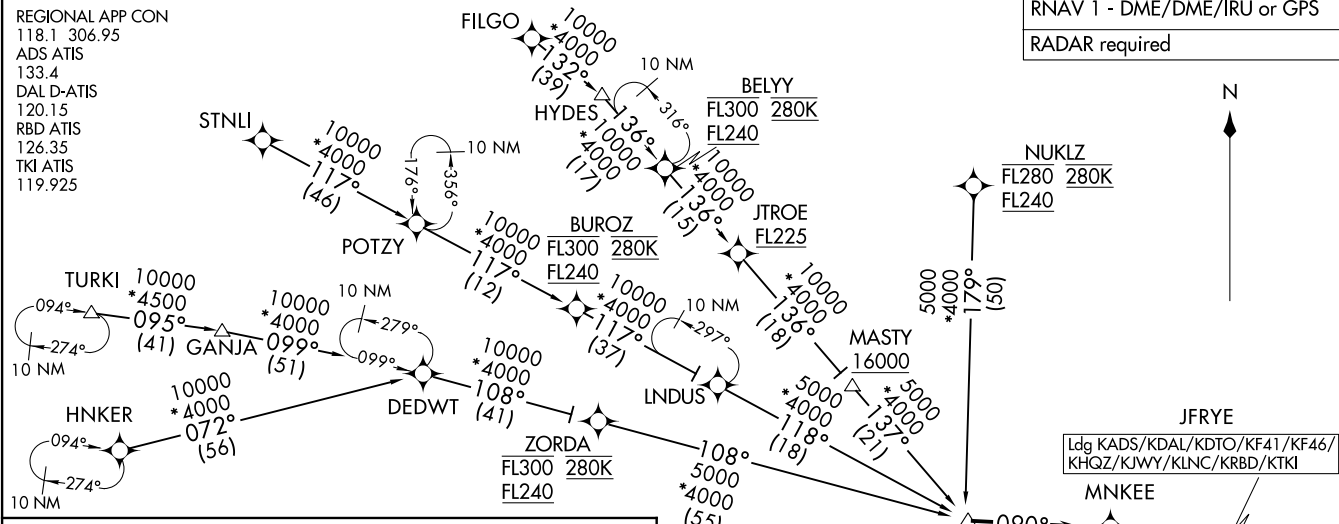
A1-106 (FAA)

JFRYE FIVE ARRIVAL (RNAV)  
 (GREGS.JFRYE5) 14JUL22

(GREGS.JFRYE5) 22195  
 JFRYE FIVE ARRIVAL (RNAV)

REGIONAL APP CON  
 118.1 306.95  
 ADS ATIS  
 133.4  
 DAL D-ATIS  
 120.15  
 RBD ATIS  
 126.35  
 TKI ATIS  
 119.925

RNAV 1 - DME/DME/IRU or GPS  
 RADAR required



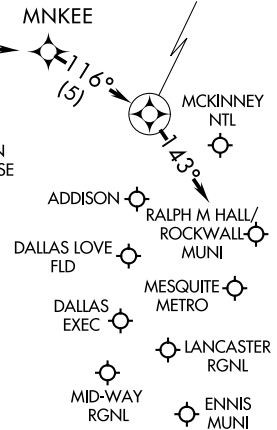
**ARRIVAL ROUTE DESCRIPTION**

- BELY TRANSITION (BELY.JFRYE5)
- BUROZ TRANSITION (BUROZ.JFRYE5)
- FILGO TRANSITION (FILGO.JFRYE5)
- HNKER TRANSITION (HNKER.JFRYE5)
- HYDES TRANSITION (HYDES.JFRYE5)
- NUKLZ TRANSITION (NUKLZ.JFRYE5)
- STNLI TRANSITION (STNLI.JFRYE5)
- TURKI TRANSITION (TURKI.JFRYE5)
- ZORDA TRANSITION (ZORDA.JFRYE5)

LANDING ALL AIRPORTS: From GREGS on track 090° to MNKEE, then on track 116° to JFRYE, then on track 143°. Expect RADAR vectors to final approach course.

- NOTE: Jet aircraft only.
- NOTE: When DFW is landing north, expect the HERBZ RNAV STAR.
- NOTE: ZORDA, BUROZ, and BELY Enroute Transitions - ATC assigned only.

NOTE: Chart not to scale.



AL-106 (FAA)

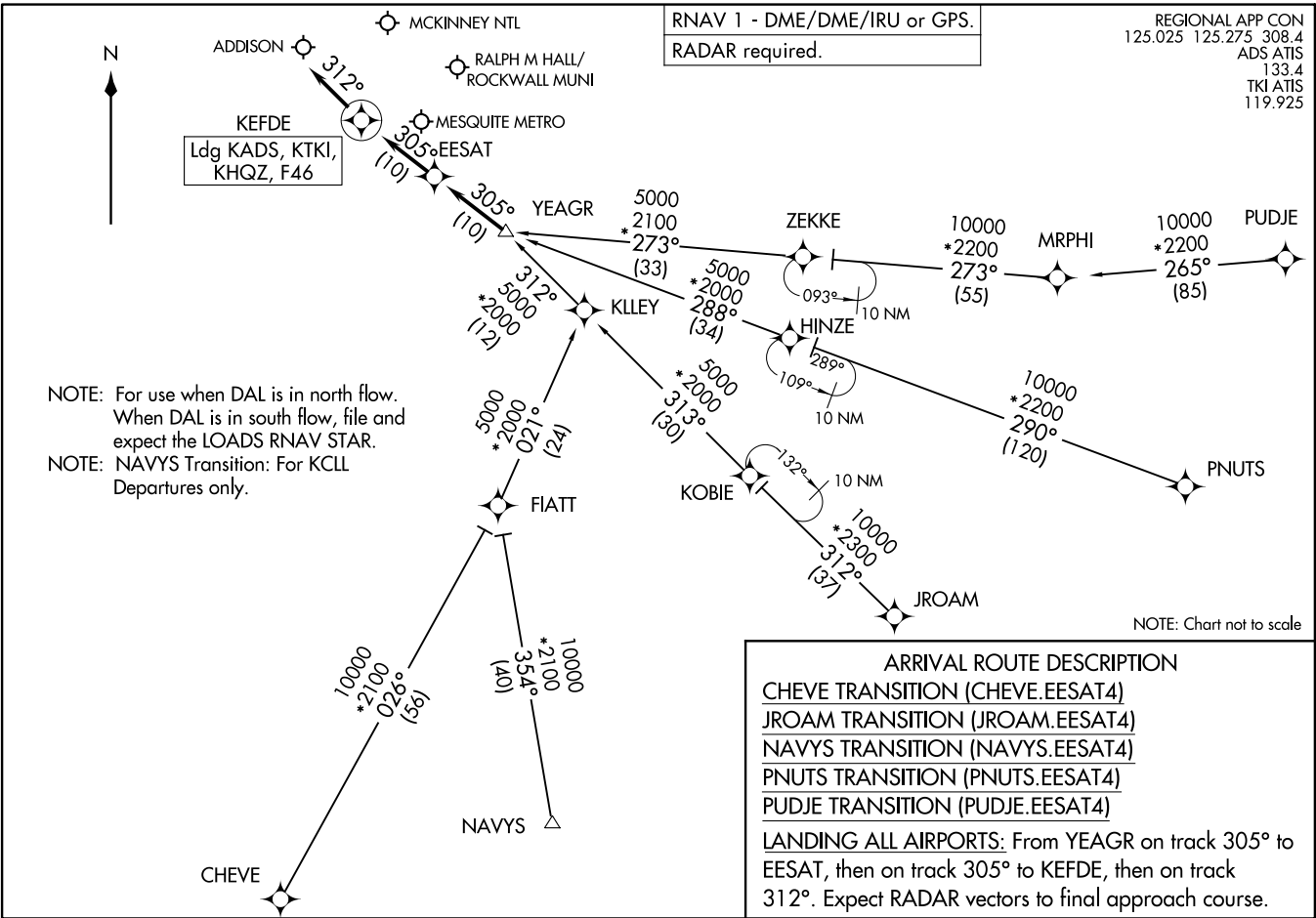
DALLAS, TEXAS

DALLAS, TEXAS

YEAGR.EESAT4) 20APR23

EEASAT FOUR ARRIVAL (RNAV)

DALLAS, TEXAS



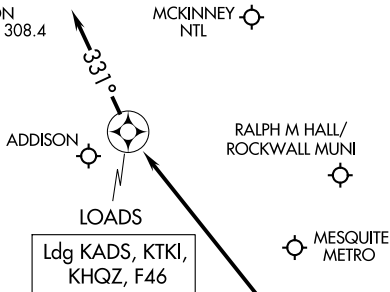
YEAGR.EESAT4) 23110

DALLAS, TEXAS

AL-768 (FAA)

LOADS FOUR ARRIVAL (RNAV)  
(YEAGR.LOADS4) 20AR23

REGIONAL APP CON  
125.025 125.275 308.4  
ADS ATIS  
133.4  
TKI ATIS  
119.925



**ARRIVAL ROUTE DESCRIPTION**

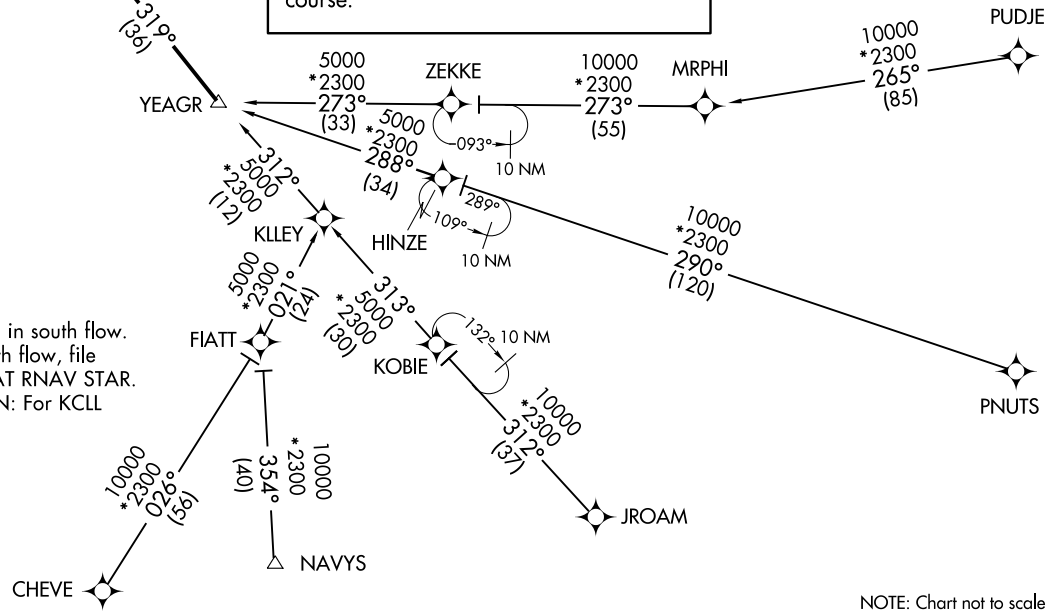
CHEVE TRANSITION (CHEVE.LOADS4)  
JROAM TRANSITION (JROAM.LOADS4)  
NAVYS TRANSITION (NAVYS.LOADS4)  
PNUTS TRANSITION (PNUTS.LOADS4)  
PUDJE TRANSITION (PUDJE.LOADS4)

**LANDING ALL AIRPORTS:** From YEAGR on track 319° to LOADS, then on track 331°.  
 Expect RADAR vectors to final approach course.

RNAV 1 - DME/DME/IRU or GPS.  
 RADAR required.

LOADS FOUR ARRIVAL (RNAV)  
(YEAGR.LOADS4) 23110

AL-768 (FAA)



NOTE: For use when DAL is in south flow.  
 When DAL is in north flow, file and expect the EESAT RNAV STAR.

NOTE: NAVYS TRANSITION: For KCLL departures only.

NOTE: Chart not to scale.

DALLAS, TEXAS

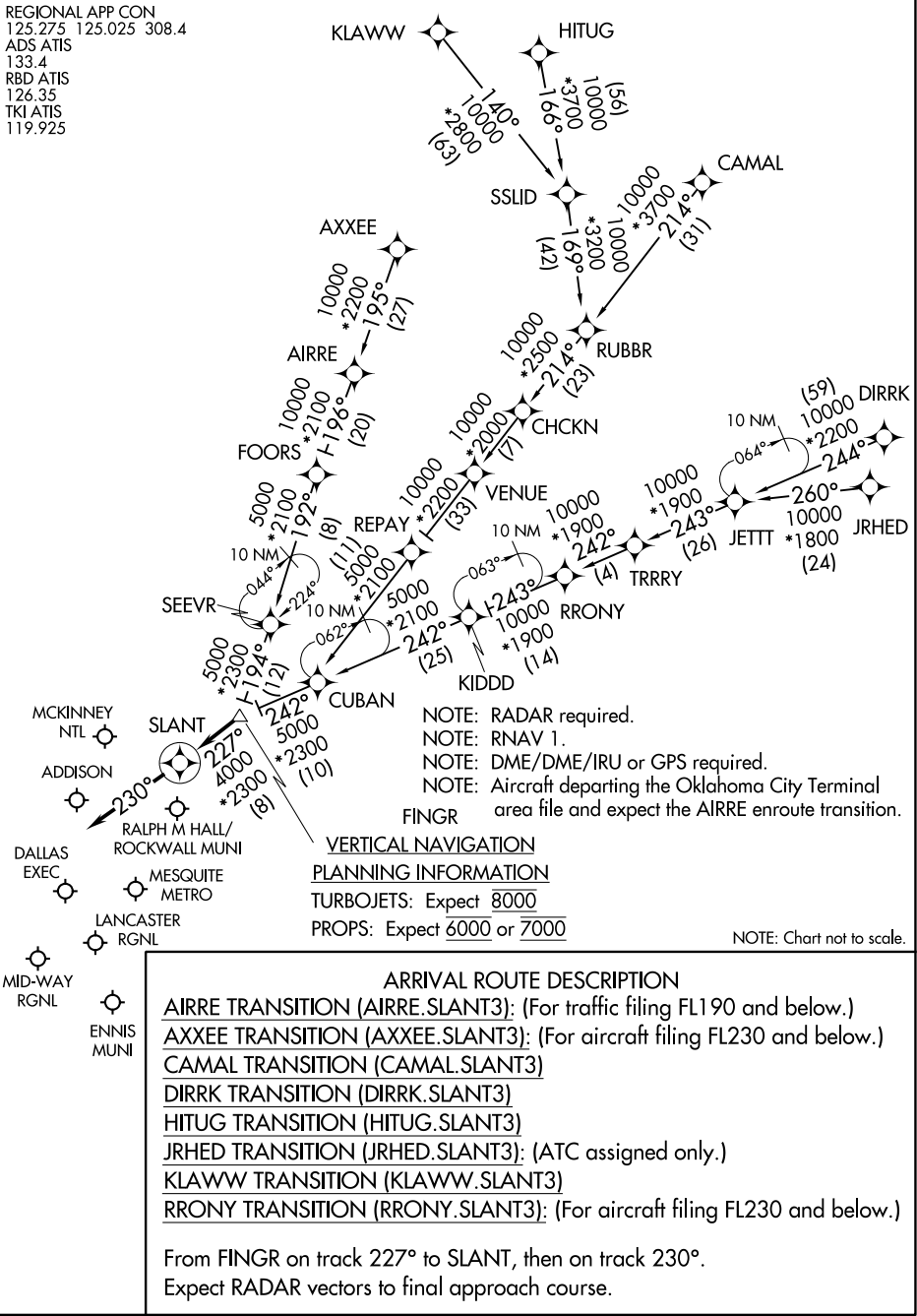
DALLAS, TEXAS



# SLANT THREE ARRIVAL (RNAV)

DALLAS, TEXAS

REGIONAL APP CON  
 125.275 125.025 308.4  
 ADS ATIS  
 133.4  
 RBD ATIS  
 126.35  
 TKI ATIS  
 119.925



SC-2, 22 FEB 2024 to 21 MAR 2024

SC-2, 22 FEB 2024 to 21 MAR 2024

# SLANT THREE ARRIVAL (RNAV)

DALLAS, TEXAS

SWWAY FOUR ARRIVAL (RNAV)  
 (KNEAD.SWWAY4) 26MAY16

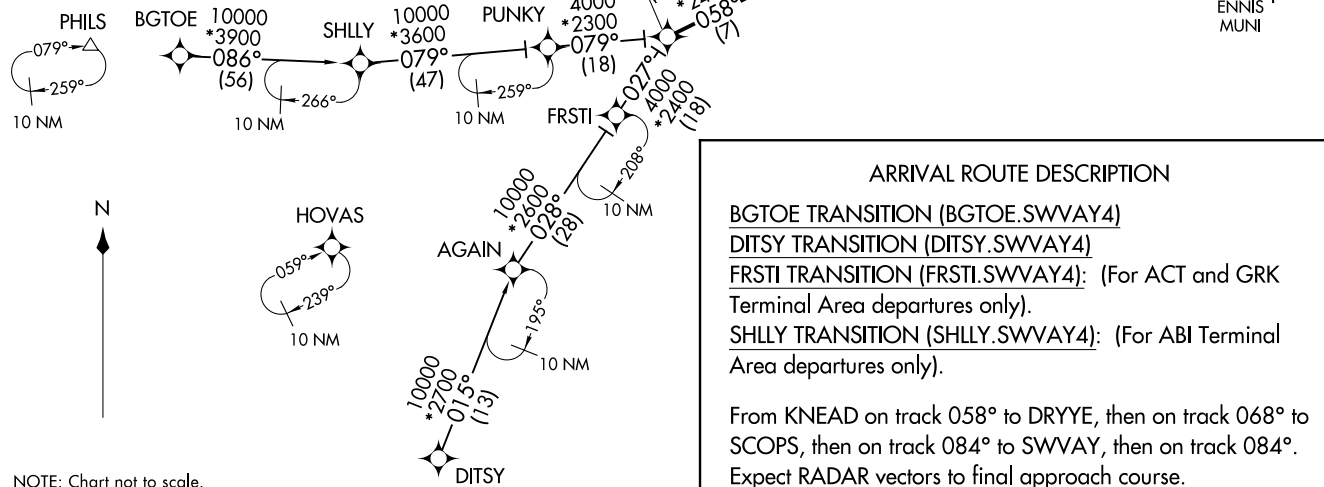
(KNEAD.SWWAY4) 23222  
 SWWAY FOUR ARRIVAL (RNAV)

AL-768 (FAA)

DALLAS, TEXAS

REGIONAL APP CON  
 135.975 379.9  
 ADS ATIS  
 133.4  
 DAL D-ATIS  
 120.15  
 FWS ATIS  
 120.025  
 RBD ATIS  
 126.35  
 TKI ATIS  
 119.925

NOTE: RADAR required.  
 NOTE: RNAV 1.  
 NOTE: DME/DME/IRU or GPS required.  
 NOTE: DAL ARRIVALS: Props only. Turbojet aircraft file and expect the BACHR or DRYYE RNAV STARS.  
 NOTE: Props exempt from speed restriction at KNEAD.  
 NOTE: When DFW is in south flow, turbojets expect to cross KNEAD at 10000.  
 NOTE: When DFW is in north flow, turbojets expect to cross KNEAD at 12000.



**ARRIVAL ROUTE DESCRIPTION**

BGTOE TRANSITION (BGTOE.SWWAY4)  
DITSY TRANSITION (DITSY.SWWAY4)  
FRSTI TRANSITION (FRSTI.SWWAY4): (For ACT and GRK Terminal Area departures only).  
SHLLY TRANSITION (SHLLY.SWWAY4): (For ABI Terminal Area departures only).

From KNEAD on track 058° to DRYYE, then on track 068° to SCOPS, then on track 084° to SWWAY, then on track 084°.  
 Expect RADAR vectors to final approach course.

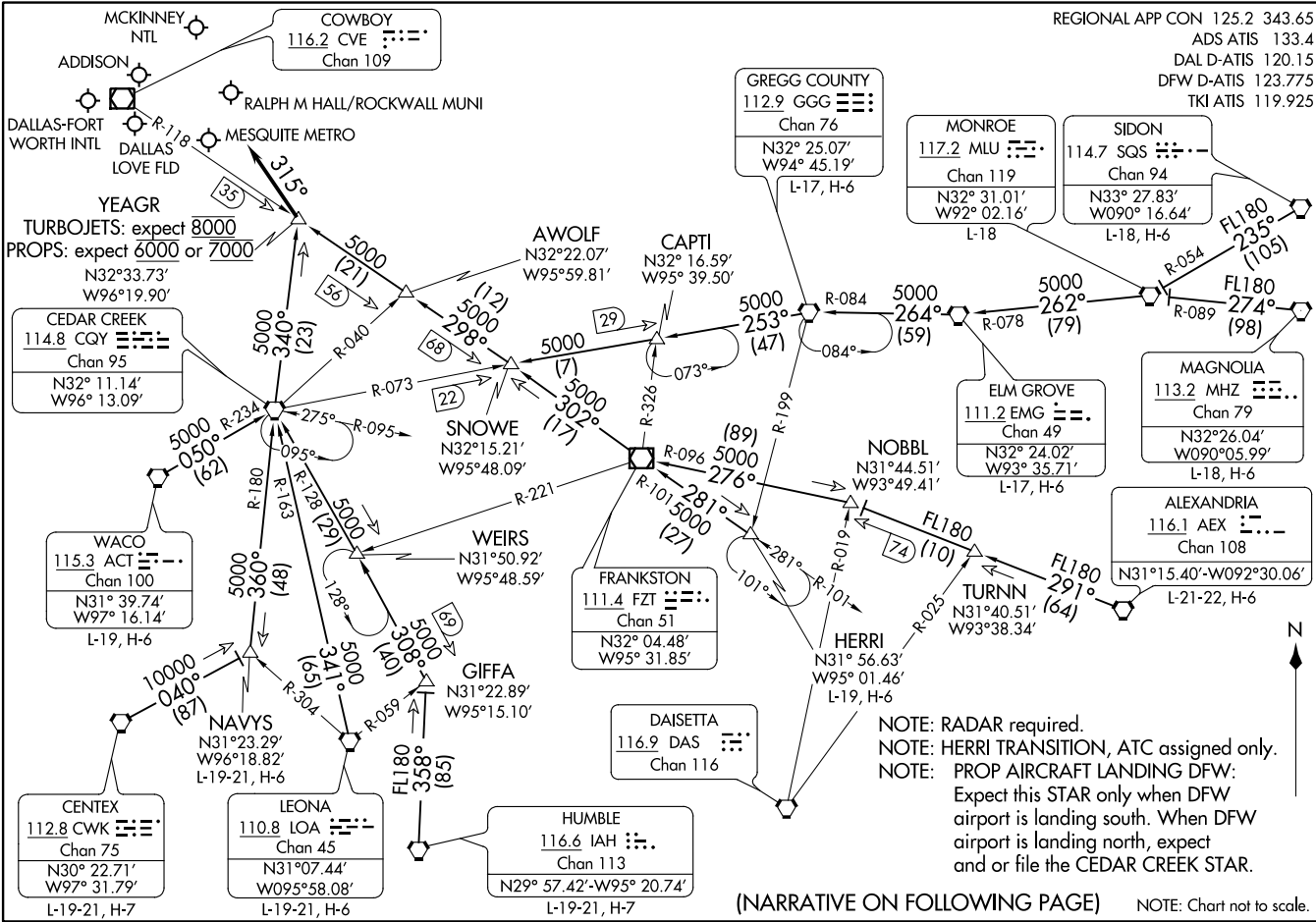
NOTE: Chart not to scale.

DALLAS, TEXAS

YEAGR.YEAGR4) 21MARV20

YEAGR FOUR ARRIVAL

DALLAS-FORT WORTH, TEXAS



REGIONAL APP CON 125.2 343.65  
 ADS ATIS 133.4  
 DAL D-ATIS 120.15  
 DFW D-ATIS 123.775  
 TKI ATIS 119.925

YEAGR.YEAGR4) 23054

DALLAS-FORT WORTH, TEXAS

AL-6039 (FAA)

(NARRATIVE ON FOLLOWING PAGE)

NOTE: Chart not to scale.

# YEAGR FOUR ARRIVAL

DALLAS-FORT WORTH, TEXAS

## ARRIVAL ROUTE DESCRIPTION

ALEXANDRIA TRANSITION (AEX.YEAGR4): From over AEX VORTAC on AEX R-291 to NOBBL, then on FZT R-096 to FZT VOR/DME, then on FZT R-302 to SNOWE, then on CVE R-118 to YEAGR. Thence. . . .

CENTEX TRANSITION (CWK.YEAGR4): From over CWK VORTAC on CWK R-040 to NAVYS, then on CQY R-180 to CQY VORTAC, then on CQY R-340 to YEAGR. Thence. . . .

ELM GROVE TRANSITION (EMG.YEAGR4): From over EMG VORTAC on EMG R-264 and GGG R-084 to GGG VORTAC, then on GGG R-253 and CQY R-073 to CAPTI, then on CQY R-073 to SNOWE, then on CVE R-118 to YEAGR. Thence. . . .

GREGG COUNTY TRANSITION (GGG.YEAGR4): From over GGG VORTAC on GGG R-253 and CQY R-073 to CAPTI, then on CQY R-073 to SNOWE, then on CVE R-118 to YEAGR. Thence. . . .

GIFFA TRANSITION (GIFFA.YEAGR4): From over GIFFA on CQY R-128 to CQY VORTAC, then on CQY R-340 to YEAGR. Thence. . . .

HERRI TRANSITION (HERRI.YEAGR4): From over HERRI on FZT R-101 to FZT VOR/DME, then on FZT R-302 to SNOWE, then on CVE R-118 to YEAGR. Thence. . . .

HUMBLE TRANSITION (IAH.YEAGR4): From over IAH VORTAC on IAH R-358 to GIFFA, then on CQY R-128 to CQY VORTAC, then on CQY R-340 to YEAGR. Thence. . . .

LEONA TRANSITION (LOA.YEAGR4): From over LOA VORTAC on LOA R-341 and CQY R-163 to CQY VORTAC, then on CQY R-340 to YEAGR. Thence. . . .

MAGNOLIA TRANSITION (MHZ.YEAGR4): From over MHZ VORTAC on MHZ R-274 and MLU R-089 to MLU VORTAC, then on MLU R-262 and EMG R-078 to EMG VORTAC, then on EMG R-264 and GGG R-084 to GGG VORTAC, then on GGG R-253 and CQY R-073 to CAPTI, then on CQY R-073 to SNOWE, then on CVE R-118 to YEAGR. Thence. . . .

MONROE TRANSITION (MLU.YEAGR4): From over MLU VORTAC on MLU R-262 and EMG R-078 to EMG VORTAC, then on EMG R-264 and GGG R-084 to GGG VORTAC, then on GGG R-253 and CQY R-073 to CAPTI, then on CQY R-073 to SNOWE, then on CVE R-118 to YEAGR. Thence. . . .

NAVYS TRANSITION (NAVYS.YEAGR4): From over NAVYS on CQY R-180 to CQY VORTAC, then on CQY R-340 to YEAGR. Thence. . . .

SIDON TRANSITION (SQS.YEAGR4): From over SQS VORTAC on SQS R-235 and MLU R-054 to MLU VORTAC, then on MLU R-262 and EMG R-078 to EMG VORTAC, then on EMG R-264 and GGG R-084 to GGG VORTAC, then on GGG R-253 and CQY R-073 to CAPTI, then on CQY R-073 to SNOWE, then on CVE R-118 to YEAGR. Thence. . . .

WACO TRANSITION (ACT.YEAGR4): From over ACT VORTAC on ACT R-050 and CQY R-234 to CQY VORTAC, then on CQY R-340 to YEAGR. Thence. . . .

. . . from over YEAGR, depart heading 315° or as assigned by ATC.  
Expect RADAR vectors to final.

SC-2, 22 FEB 2024 to 21 MAR 2024

SC-2, 22 FEB 2024 to 21 MAR 2024

# YEAGR FOUR ARRIVAL

DALLAS-FORT WORTH, TEXAS

SASIE SEVEN ARRIVAL  
(SASIE: SASIE7) 29DEC22

(SASIE: SASIE7) 22363  
SASIE SEVEN ARRIVAL

AL-6918 (FAA)

DALLAS-FORT WORTH, TEXAS

REGIONAL APP CON  
124.3 282.275  
ADS ATIS  
133.4  
AFW ATIS  
126.925  
FTW ATIS  
120.7  
FWS ATIS  
120.025  
KNFW ATIS\*  
351.675

ARDMORE  
116.7 ADM  
Chan 114  
N34°12.70'  
W97°10.09'  
L-17, H-6

TULSA  
114.4 TUL  
Chan 91  
N36°11.78'  
W95°47.29'  
L-15, H-6

FORT SMITH  
110.4 FSM  
Chan 41  
N35°23.30'-W94°16.29'  
L-16, H-6

LITTLE ROCK  
113.9 LIT  
Chan 86  
N34°40.66'-W92°10.83'  
L-18, H-6

RICH MOUNTAIN  
113.5 PGO  
Chan 82

MEEOW  
N34°19.09'  
W93°31.42'

ROBEY  
N33°42.02'  
W95°41.34'

GREGG COUNTY  
112.9 GGG  
Chan 76

TEXARKANA  
116.3 TXK  
Chan 110  
N33°30.83'  
W94°04.39'  
L-17, H-6

EL DORADO  
115.5 ELD  
Chan 102

PARIS  
113.6 PRX  
Chan 83  
N33°32.54'  
W95°26.90'  
L-17

MONTE  
N33°32.41'  
W95°53.71'

BONHAM  
114.6 BYP  
Chan 93  
N33°32.25'  
W96°14.05'  
L-17, H-6

RANGER  
115.7 FUZ  
Chan 104

FORT WORTH MEACHAM INTL

FORT WORTH NAS JBR (CARSWELL FLD)

PARKER COUNTY

ARLINGTON MUNI

BOURLAND FLD

FORT WORTH SPINKS

CLEBURNE RGNL

WEST SATELLITE TURBOJETS  
LANDING NORTH Expect 10000  
WEST SATELLITE TURBOJETS  
LANDING SOUTH Expect 11000  
LANDING ADS:  
TURBOJETS Expect 6000  
PROPS Expect 5000 or 6000

DENTON ENTERPRISE

DECATUR MUNI

PEROT FLD/FORT WORTH ALLIANCE

ADDISON

CAINE  
N33°38.95'  
W96°23.23'

GAATZ  
N33°54.23'  
W95°51.31'

BIRLE  
N34°17.64'  
W95°26.78'

MAMEE  
N34°28.94'  
W95°14.84'

KOMMA  
N35°00.88'  
W94°40.66'

GLOVE  
N33°52.31'  
W95°06.25'

247°  
FL180  
\*3000  
(70)

244°  
5000  
\*2400  
(31)

5000  
\*2400  
(15)

248°  
5000  
\*2400  
(19)

255°

263°  
5000  
\*2400  
(22)

285°  
5000  
\*2400  
(56)

NOTE: DME required for fixes ROBEY and MONTE.  
NOTE: RADAR required.  
NOTE: ATC assigned only for aircraft landing ADS.

(NARRATIVE ON FOLLOWING PAGE)

NOTE: Chart not to scale.

ARRIVAL ROUTE DESCRIPTION

ARDMORE TRANSITION (ADM.SASIE7): From over ADM VORTAC on ADM R-125 and BYP R-305 to CAINE, then on FUZ R-035 to SASIE. Thence . . . .

BONHAM TRANSITION (BYP.SASIE7): From over BYP VORTAC on BYP R-248 to SASIE. Thence . . . .

CAINE TRANSITION (CAINE.SASIE7): From over CAINE on FUZ VORTAC R-035 to SASIE. Thence . . . .

FORT SMITH TRANSITION (FSM.SASIE7): From over FSM VORTAC on FSM R-215 to MAMEE, then on BYP R-035 to BYP VORTAC, then on BYP R-248 to SASIE. Thence . . . .

LITTLE ROCK TRANSITION (LIT.SASIE7): From over LIT VORTAC on LIT R-247 to MEEOW, then on LIT R-247 and BYP R-064 to GLOVE, then on BYP R-064 to BYP VORTAC, then on BYP R-248 to SASIE. Thence . . . .

PARIS TRANSITION (PRX.SASIE7): From over PRX VOR/DME on PRX R-263 and BYP R-083 to MONTE, then on BYP R-083 to BYP VORTAC, then on BYP R-248 to SASIE. Thence . . . .

TEXARKANA TRANSITION (TXK.SASIE7): From over TXK VORTAC on TXK R-286 to GLOVE, then on BYP R-064 to BYP VORTAC, then on BYP R-248 to SASIE. Thence . . . .

TULSA TRANSITION (TUL.SASIE7): From over TUL VORTAC on TUL R-157 to MAMEE, then on BYP R-035 to BYP VORTAC, then on BYP R-248 to SASIE. Thence . . . .

. . . . from SASIE, then on heading 255° or as assigned by ATC. Expect RADAR vectors to final approach course.

SC-2, 22 FEB 2024 to 21 MAR 2024

SC-2, 22 FEB 2024 to 21 MAR 2024