

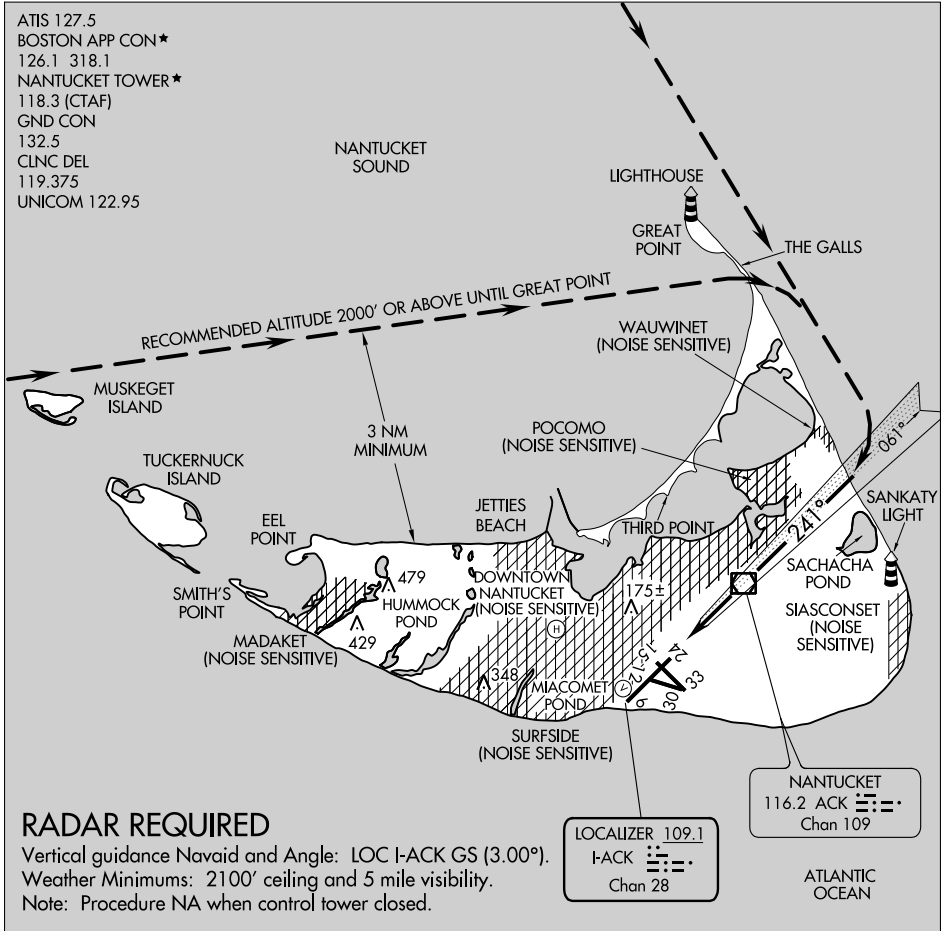
21112

# GREAT POINT VISUAL RWY 24

AL-659 (FAA)

NANTUCKET MEML (ACK)  
NANTUCKET, MASSACHUSETTS

ATIS 127.5  
 BOSTON APP CON ★  
 126.1 318.1  
 NANTUCKET TOWER ★  
 118.3 (CTAF)  
 GND CON  
 132.5  
 CLNC DEL  
 119.375  
 UNICOM 122.95



NE-1, 22 FEB 2024 to 21 MAR 2024

NE-1, 22 FEB 2024 to 21 MAR 2024

## RADAR REQUIRED

Vertical guidance Navaid and Angle: LOC I-ACK GS (3.00°).  
 Weather Minimums: 2100' ceiling and 5 mile visibility.  
 Note: Procedure NA when control tower closed.

1 NM	2	3	4	5	6	7	8	9	10	11	12	13	14	15
------	---	---	---	---	---	---	---	---	----	----	----	----	----	----

# GREAT POINT VISUAL RWY 24

41°15'N-70°04'W

NANTUCKET, MASSACHUSETTS  
NANTUCKET MEML (ACK)

Amdt 1 10NOV16

LOC/DME I-ACK <b>109.1</b> Chan <b>28</b>	APP CRS <b>241°</b>	Rwy Idg TDZE Apt Elev <b>6303</b> <b>47</b> <b>47</b>
---	------------------------	--

# ILS or LOC RWY 24

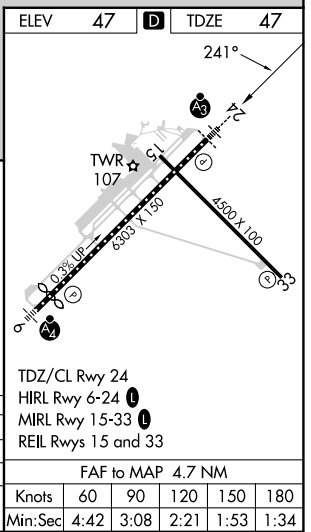
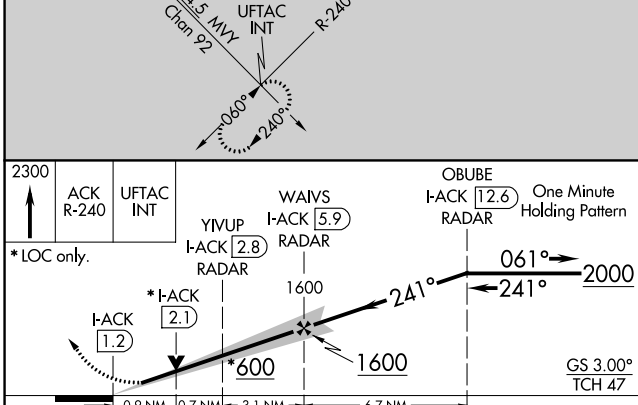
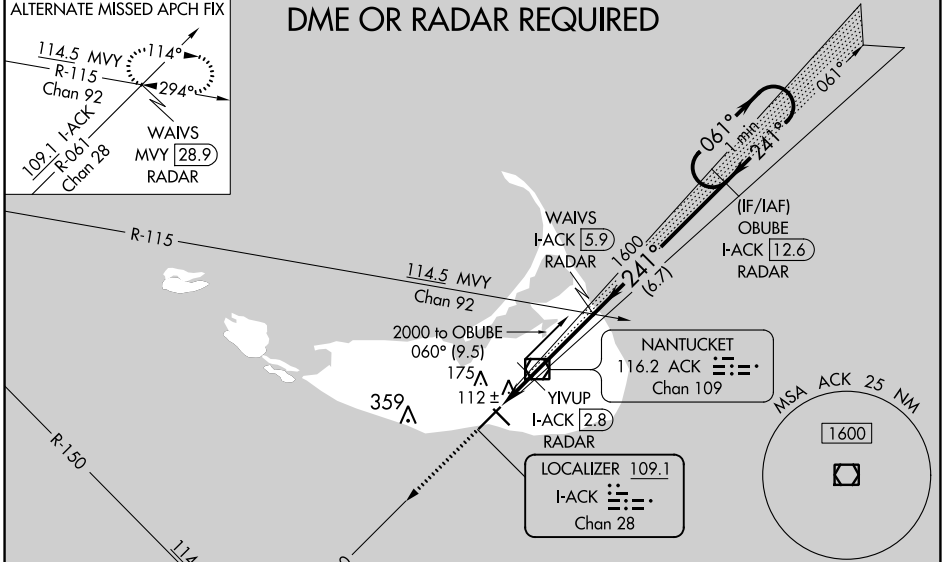
NANTUCKET MEML (ACK)

When local altimeter setting not received, use Hyannis altimeter setting and increase DA to 310 and all MDA 80 feet. Increase S-ILS 24, all Cats, visibility to RVR 2000, S-LOC 24 Cats C/D visibility to RVR 4000 and increase Circling Cats C/D ¼ SM. VDP NA when using Hyannis altimeter setting. For inop SSALR when using the Hyannis altimeter setting, increase S-ILS 24, all Cats, visibility to RVR 4500 and increase S-LOC 24 Cats C/D visibility to RVR 6000.



MISSED APPROACH:  
Climb to 2300 on  
ACK VOR/DME R-240  
to UFTAC INT and hold.

ATIS <b>127.5</b>	BOSTON APP CON * <b>126.1 318.1</b>	NANTUCKET TOWER * <b>118.3 (CTAF) 0</b>	GND CON <b>132.5</b>	CLNC DEL <b>119,375</b>	UNICOM <b>122.95</b>
----------------------	--	--	-------------------------	----------------------------	-------------------------



CATEGORY	A	B	C	D
S-ILS 24	247/18 200 (200-½)			
S-LOC 24	380/24	333 (400-½)	380/26	333 (400-½)
CIRCLING	480-1	500-1	720-2	720-2¼
	433 (500-1)	453 (500-1)	673 (700-2)	673 (700-2¼)

NE-1, 22 FEB 2024 to 21 MAR 2024

NE-1, 22 FEB 2024 to 21 MAR 2024

LOC/DME I-RNE <b>109.1</b> Chan <b>28</b>	APP CRS <b>061°</b>	Rwy Idg <b>5766</b> TDZE <b>38</b> Apt Elev <b>47</b>
---	------------------------	---

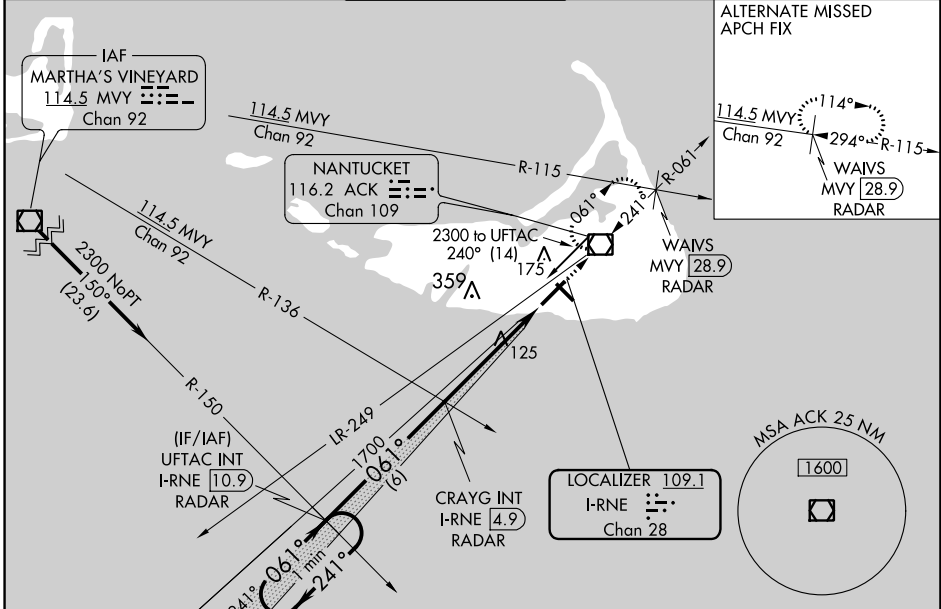
# ILS or LOC RWY 6

NANTUCKET MEML (ACK)

When local altimeter not received, use Hyannis altimeter setting and increase S-ILS 6 DA to 301 and all MDA 80 feet; increase S-LOC 6 Cats C/D visibility to RVR 5000 and Circling Cats C/D visibility 1/4 SM. Inop table does not apply to S-ILS 6. For inop ALS, increase S-LOC 6 Cat D visibility to RVR 5500. For inop ALS when using Hyannis altimeter setting, increase S-ILS 6 all Cats visibility to RVR 4500 and S-LOC 6 Cat D visibility to 1/4 SM. VDP NA when using Hyannis altimeter setting.

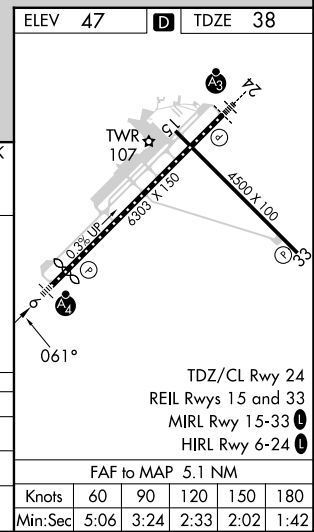
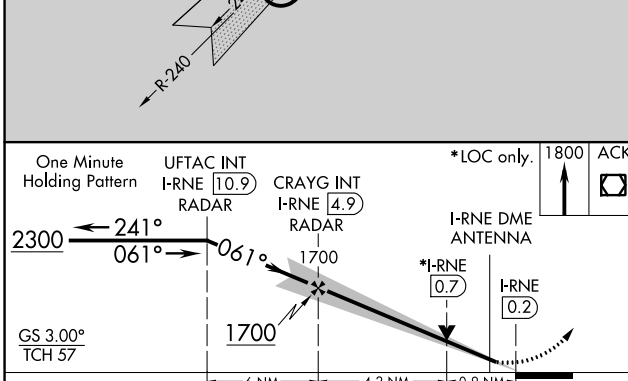
**MALSF**  
MISSED APPROACH:  
Climb to 1800 direct  
ACK VOR/DME and  
hold, continue climb-  
in-hold to 1800.

ATIS <b>127.5</b>	BOSTON APP CON ★ <b>126.1 318.1</b>	NANTUCKET TOWER ★ <b>118.3 (CTAF) 0</b>	GND CON <b>132.5</b>	CLNC DEL <b>119.375</b>	UNICOM <b>122.95</b>
----------------------	--	--	-------------------------	----------------------------	-------------------------



NE-1, 22 FEB 2024 to 21 MAR 2024

NE-1, 22 FEB 2024 to 21 MAR 2024



CATEGORY	A	B	C	D
S-ILS 6		238/40	200 (200-3/4)	
S-LOC 6		380/40	342 (400-3/4)	
CIRCLING	480-1 433 (500-1)	500-1 453 (500-1)	720-2 673 (700-2)	720-2 1/4 673 (700-2 1/4)

FAF to MAP 5.1 NM					
Knots	60	90	120	150	180
Min:Sec	5:06	3:24	2:33	2:02	1:42

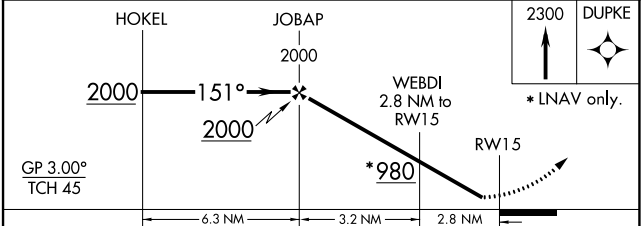
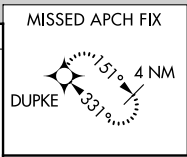
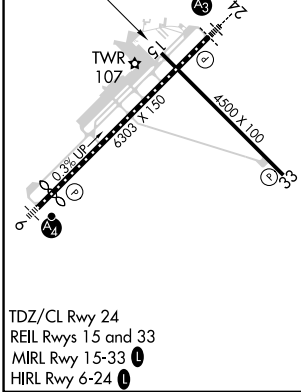
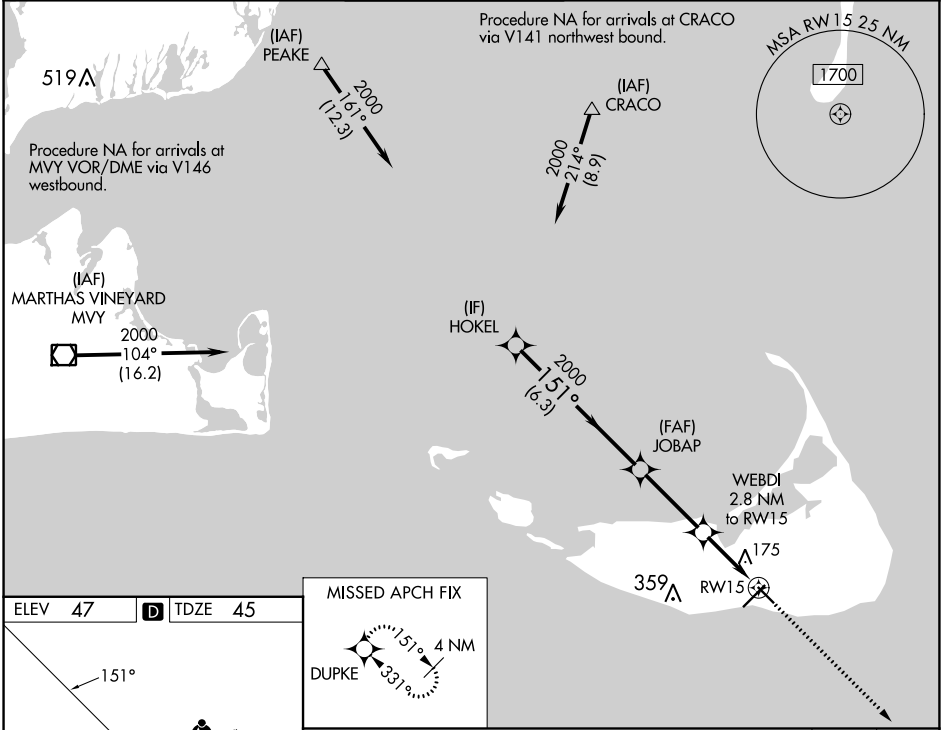
WAAS CH <b>97623</b> <b>W15A</b>	APP CRS <b>151°</b>	Rwy ldg <b>4500</b> TDZE <b>45</b> Apt Elev <b>47</b>
--	------------------------	---

# RNAV (GPS) RWY 15

NANTUCKET MEML (ACK)

RNP APCH.		<p>Baro-VNAV NA when using Hyannis altimeter setting. For uncompensated Baro-VNAV systems, LNAV/VNAV NA below -15°C or above 43°C. Rwy 15 helicopter visibility reduction below 3/4 SM NA. When local altimeter setting not received, use Hyannis altimeter setting and increase LPV DA to 358, LNAV/VNAV DA to 543, and all MDA 80 feet; increase LNAV/VNAV all Cats and LNAV Cats C and D visibility 1/4 mile.</p>		<p>MISSED APPROACH: Climb to 2300 direct DUPKE and hold.</p>	
-----------	--	--	--	--	--

ATIS <b>127.5</b>	BOSTON APP CON * <b>126.1 318.1</b>	NANTUCKET TOWER * <b>118.3 (CTAF) 0</b>	GND CON <b>132.5</b>	CLNC DEL <b>119.375</b>	UNICOM <b>122.95</b>
----------------------	--	--	-------------------------	----------------------------	-------------------------



CATEGORY	A	B	C	D
LPV DA	295-1		250 (300-1)	
LNAV/VNAV DA	480-1½		435 (500-1½)	
LNAV MDA	440-1		395 (400-1)	
			440-1½ 395 (400-1½)	

NE-1, 22 FEB 2024 to 21 MAR 2024

NE-1, 22 FEB 2024 to 21 MAR 2024

WAAS CH <b>93612</b> <b>W24A</b>	APP CRS <b>241°</b>	Rwy Idg TDZE <b>47</b> Apt Elev <b>47</b>	<b>6303</b>
--	------------------------	---	-------------

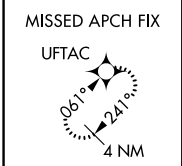
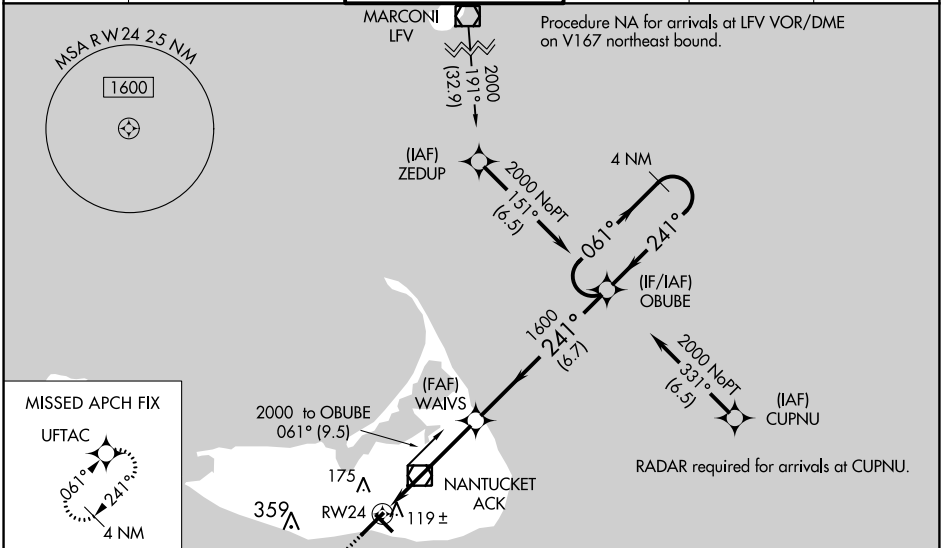
# RNAV (GPS) RWY 24

NANTUCKET MEML (ACK)

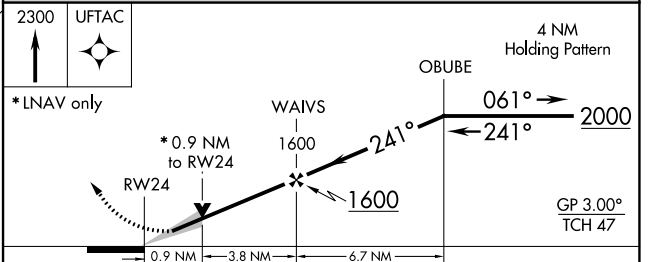
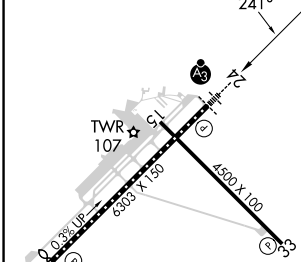
▼ For uncompensated Baro-VNAV systems, LNAV/VNAV NA below -12°C (11°F) or above 54°C (130°F). DME/DME RNP-0.3 NA. Baro-VNAV and VDP NA when using Hyannis altimeter setting. When local altimeter setting not received, use Hyannis altimeter setting and increase LPV DA to 310 feet and LNAV/VNAV DA to 363 feet and all MDA 80 feet, increase LNAV/VNAV all Cats visibility to RVR 3000 and LNAV Cats C/D visibility to RVR 4000 and Circling Cats C/D visibility ¼ SM. For inop SSALR increase LNAV/VNAV all Cats visibility to RVR 4000. For inop SSALR when using Hyannis altimeter setting, increase LPV all Cats visibility to RVR 4500, LNAV/VNAV all Cats to RVR 5000, and LNAV Cats C/D to RVR 6000. \*\* 2400 RVR when using Hyannis altimeter setting.

SSALR  
MISSED APPROACH:  
Climb to 2300 direct  
UFTAC and hold.

ATIS <b>127.5</b>	BOSTON APP CON* <b>126.1 318.1</b>	NANTUCKET TOWER * <b>118.3 (CTAF) 0</b>	GND CON <b>132.5</b>	CLNC DEL <b>119.375</b>	UNICOM <b>122.95</b>
----------------------	---------------------------------------	--	-------------------------	----------------------------	-------------------------



ELEV 47	<b>D</b>	TDZE 47
---------	----------	---------



CATEGORY	A	B	C	D
LPV DA**	247/18 200 (200-½)			
LNAV/VNAV DA	300/24 253 (300-½)			
LNAV MDA	380/24	333 (400-½)	380/26	333 (400-½)
<input checked="" type="checkbox"/> CIRCLING	480-1 433 (500-1)	500-1 453 (500-1)	720-2 673 (700-2)	720-2¼ 673 (700-2¼)

TDZ/CL Rwy 24  
REIL Rwys 15 and 33  
MIRL Rwy 15-33  
HIRL Rwy 6-24

NE-1, 22 FEB 2024 to 21 MAR 2024

NE-1, 22 FEB 2024 to 21 MAR 2024

WAAS CH <b>77835</b> <b>W33A</b>	APP CRS <b>331°</b>	Rwy Idg <b>4500</b> TDZE <b>41</b> Apt Elev <b>47</b>
--	------------------------	---

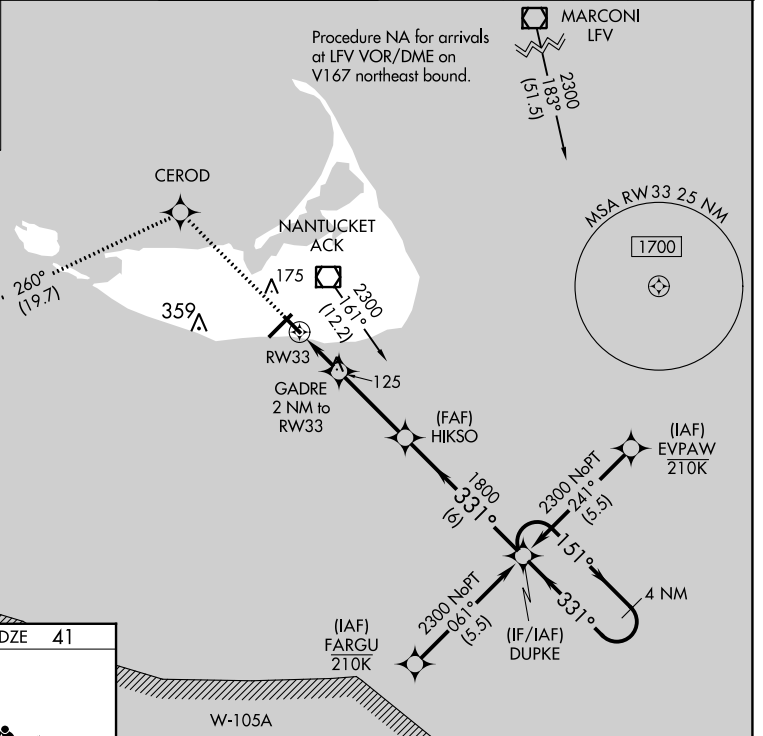
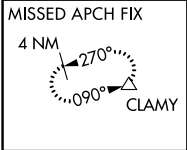
# RNAV (GPS) RWY 33

NANTUCKET MEML (ACK)

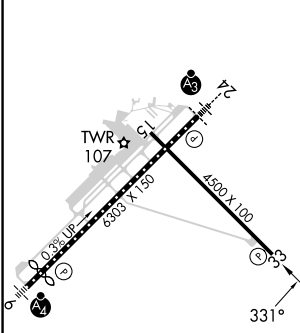
**Baro-VNAV NA** when using Hyannis altimeter setting. For uncompensated Baro-VNAV systems, LNAV/VNAV NA below -11°C (13°F) or above 54°C (130°F). When local altimeter setting not received, use Hyannis altimeter setting: increase all DA 63 feet and all MDA 80 feet; increase LNAV Cats C and D visibility 1/8 mile and Circling Cat C visibility 1/4 mile. DME/DME RNP-0.3 NA.

**MISSED APPROACH:** Climb to 2500 direct CEROD and on track 260° to CLAMY and hold.

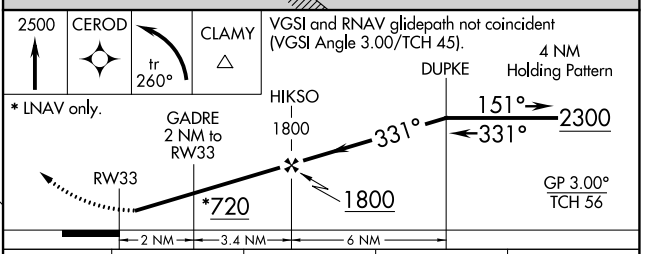
ATIS <b>127.5</b>	BOSTON APP CON* <b>126.1 318.1</b>	NANTUCKET TOWER* <b>118.3 (CTAF) 0</b>	GND CON <b>132.5</b>	CLNC DEL <b>119.375</b>	UNICOM <b>122.95</b>
----------------------	---------------------------------------	---	-------------------------	----------------------------	-------------------------



ELEV 47	<b>D</b>	TDZE 41
---------	----------	---------



TDZ/CL Rwy 24  
REIL Rwy 15 and 33  
MIRL Rwy 15-33 **0**  
HIRL Rwy 6-24 **0**



CATEGORY	A	B	C	D
LPV DA		291-1	250 (300-1)	
LNAV/VNAV DA		301-1	260 (300-1)	
LNAV MDA		380-1	339 (400-1)	
<b>C</b> CIRCLING	480-1 433 (500-1)	500-1 453 (500-1)	720-2 673 (700-2)	1000-3 953 (1000-3)

NE-1, 22 FEB 2024 to 21 MAR 2024


NE-1, 22 FEB 2024 to 21 MAR 2024

WAAS CH <b>81912</b> <b>W06A</b>	APP CRS <b>061°</b>	Rwy Idg TDZE Apt Elev	<b>5766</b> <b>38</b> <b>47</b>
--	------------------------	-----------------------------	---------------------------------------

# RNAV (GPS) RWY 6

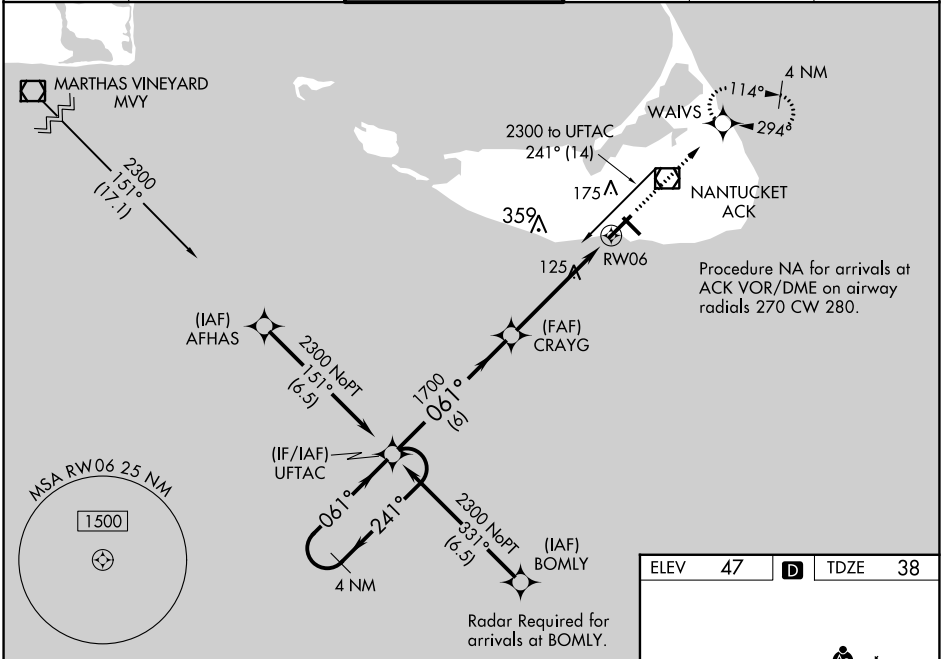
NANTUCKET MEML (ACK)

For uncompensated Baro-VNAV systems, LNAV/VNAV NA below -12°C (11°F) or above 54°C (130°F). DME/DME RNP-0.3 NA. Baro-VNAV and VDP NA when using Hyannis altimeter setting. When local altimeter setting not received, use Hyannis altimeter setting and increase LPV DA to 301, LNAV/VNAV DA to 363 and all MDA 80 feet; increase LNAV Cats C/D visibility to RVR 5000 and Circling Cats C/D visibility ¼ SM. Inoperative table does not apply to LPV. For inoperative ALS increase LNAV/VNAV all Cats visibility to RVR 4500, and LNAV Cat D visibility to RVR 5500. For inoperative ALS when using Hyannis altimeter setting, increase LPV all Cats visibility to RVR 4500, increase LNAV/VNAV all Cats visibility to RVR 6000 and increase LNAV Cats C/D to 1¼ SM.

MALSF 

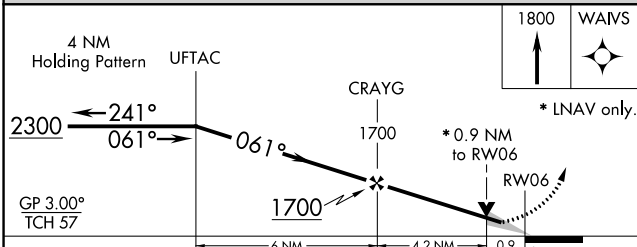
MISSED APPROACH: Climb to 1800 direct WAIVS and hold.

ATIS <b>127.5</b>	BOSTON APP CON* <b>126.1 318.1</b>	NANTUCKET TOWER * <b>118.3 (CTAF) 0</b>	GND CON <b>132.5</b>	CLNC DEL <b>119.375</b>	UNICOM <b>122.95</b>
----------------------	---------------------------------------	--	-------------------------	----------------------------	-------------------------



NE-1, 22 FEB 2024 to 21 MAR 2024

NE-1, 22 FEB 2024 to 21 MAR 2024



ELEV 47	<b>D</b>	TDZE 38
---------	----------	---------

TWR 107

15

6003 X 150


4500 X 100


0.9 NM UFTAC

061°

TDZ/CL Rwy 24

REIL Rwys 15 and 33

MIRL Rwy 15-33 

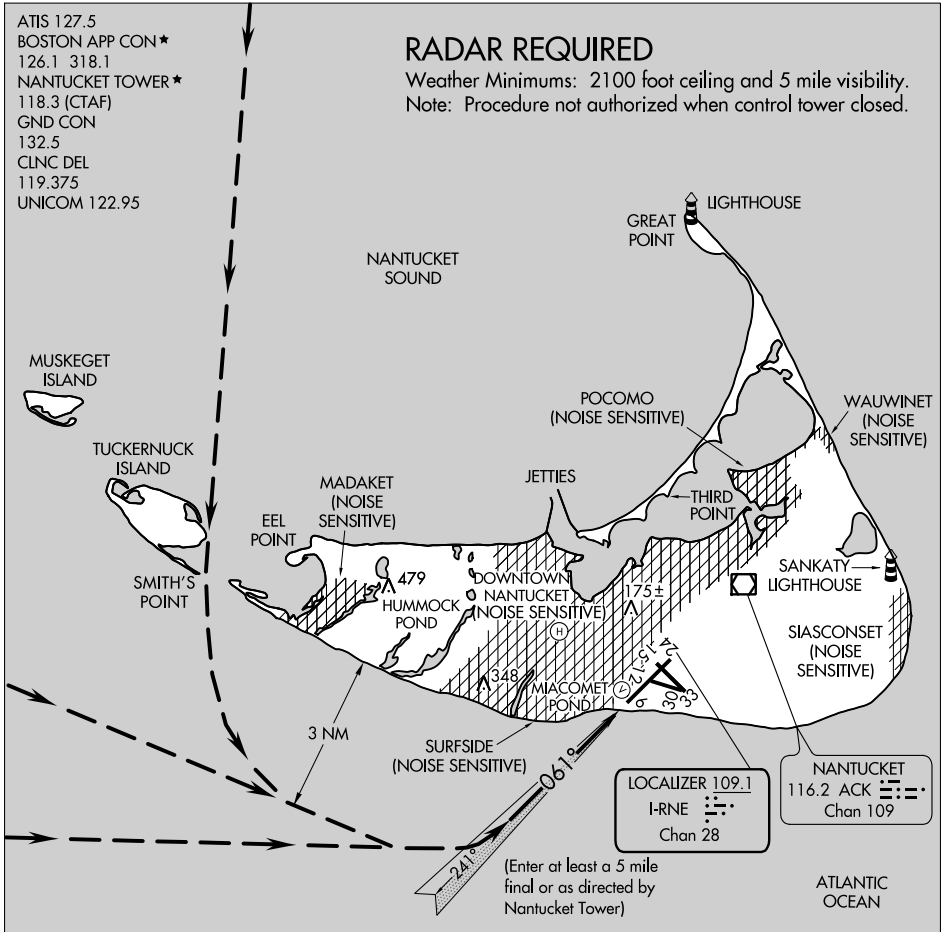
HIRL Rwy 6-24 

CATEGORY	A	B	C	D
LPV DA		238/40	200 (200-¾)	
LNAV/VNAV DA		300/40	262 (300-¾)	
LNAV MDA		380/40	342 (400-¾)	
<b>C</b> CIRCLING	480-1 433 (500-1)	500-1 453 (500-1)	720-2 673 (700-2)	720-2¼ 673 (700-2¼)

ATIS 127.5  
 BOSTON APP CON ★  
 126.1 318.1  
 NANTUCKET TOWER ★  
 118.3 (CTAF)  
 GND CON  
 132.5  
 CLNC DEL  
 119.375  
 UNICOM 122.95

**RADAR REQUIRED**

Weather Minimums: 2100 foot ceiling and 5 mile visibility.  
 Note: Procedure not authorized when control tower closed.



NE-1, 22 FEB 2024 to 21 MAR 2024

NE-1, 22 FEB 2024 to 21 MAR 2024

1 NM	2	3	4	5	6	7	8	9	10	11	12	13	14	15



ACK VOR/DME <b>116.2</b> Chan <b>109</b>	APP CRS <b>240°</b>	Rwy Idg <b>6303</b> TDZE <b>48</b> Apt Elev <b>48</b>
--	------------------------	---

# VOR RWY 24

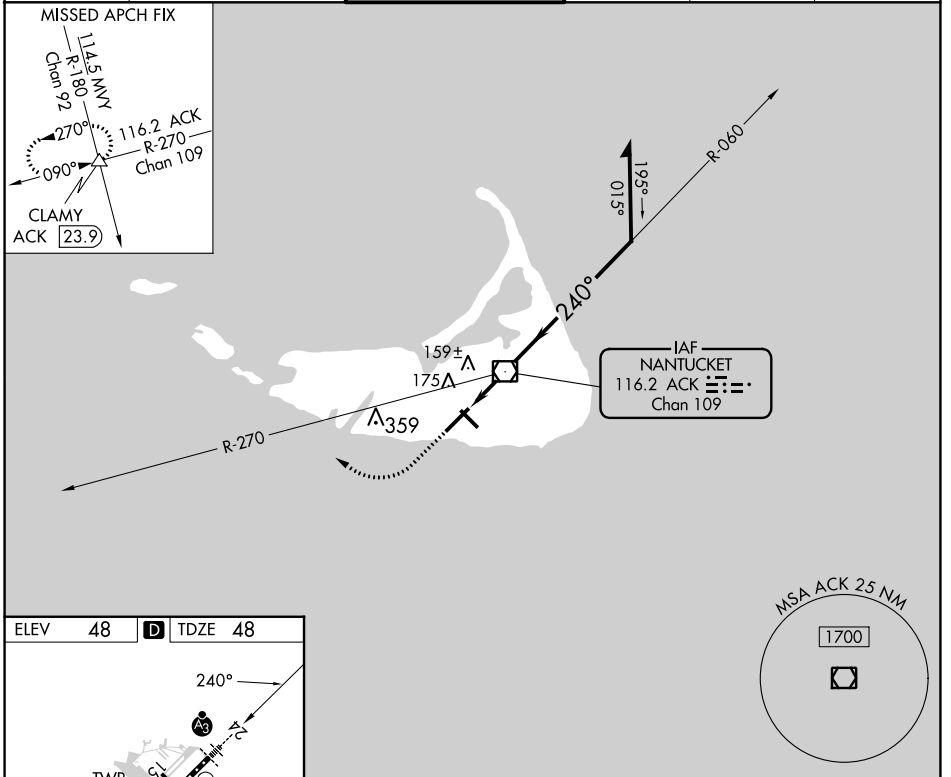
NANTUCKET MEML (ACK)

**⚠** When local altimeter setting not received, use Hyannis altimeter setting and increase all MDA 80 feet; increase S-24 Cat C visibility to RVR 4000; increase Circling Cats C/D visibility ¼ SM. VDP NA when using Hyannis altimeter setting. For Inoperative SSALR, increase S-24 Cat D visibility to RVR 6000.

**SSALR**  
**A3**

**MISSED APPROACH:** Climb to 700 then climbing right turn to 2500 via heading 310° and ACK VOR/DME R-270 to CLAMY INT/ACK 23.9 DME and hold.

ATIS <b>127.5</b>	BOSTON APP CON★ <b>126.1 318.1</b>	NANTUCKET TOWER ★ <b>118.3 (CTAF) 0</b>	GND CON <b>132.5</b>	CLNC DEL <b>119.375</b>	UNICOM <b>122.95</b>
----------------------	---------------------------------------	--	-------------------------	----------------------------	-------------------------



ELEV 48	<b>D</b>	TDZE 48			
TDZ/CL Rwy 24 REIL Rws 15 and 33 MIRL Rwy 15-33 HIRL Rwy 6-24					
FAF to MAP 1.9 NM					
Knots	60	90	120	150	180
Min:Sec	1:54	1:16	0:57	0:46	0:38

700	2500	CLAMY	ACK R-270	ACK VOR/DME	Remain within 10 NM
hdg 310°	ACK 0.9	ACK 1.9	3.47° TCH 48	6000	060°
1 NM	0.9 NM	800	240°	1800	VGSI and descent angles not coincident (VGSI Angle 3.00/TCH 48).
CATEGORY	A	B	C	D	
S-24	440/24 393 (400-½)			440/50 393 (400-1)	
<b>C</b> CIRCLING	480-1 433 (500-1)	500-1 453 (500-1)	720-2 673 (700-2)	720-2¼ 673 (700-2¼)	

NE-1, 22 FEB 2024 to 21 MAR 2024

NE-1, 22 FEB 2024 to 21 MAR 2024