

WAAS CH <b>78335</b> <b>W14A</b>	APP CRS <b>143°</b>	Rwy Idg <b>4400</b> TDZE <b>1798</b> Apt Elev <b>1800</b>
--	------------------------	---

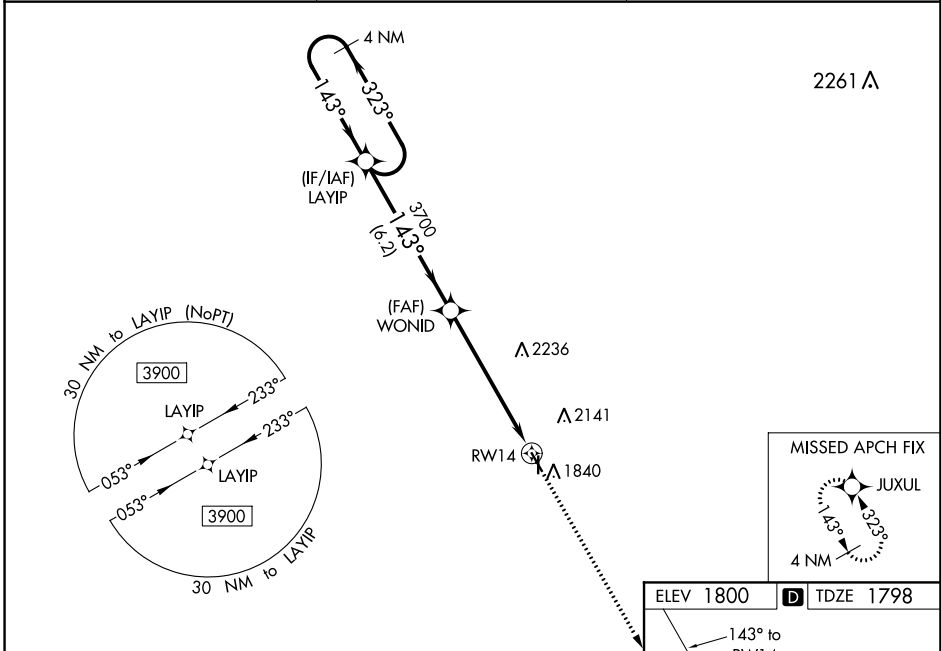
# RNAV (GPS) RWY 14

SMITH CENTER MUNI (K82)

RNP APCH-GPS.  
For uncompensated Baro-VNAV systems, LNAV/VNAV NA below -18°C or above 54°C. When local altimeter setting not received, use Concordia altimeter setting and increase all DA 169 feet and all MDA 180 feet; increase LPV all Cats visibility ¼ SM, LNAV/VNAV all Cats visibility ½ SM, Circling Cat A visibility ¼ SM and Circling Cat B visibility ½ SM. Baro-VNAV and VDP NA with Concordia altimeter setting. Circling Rwy 36 NA at night.

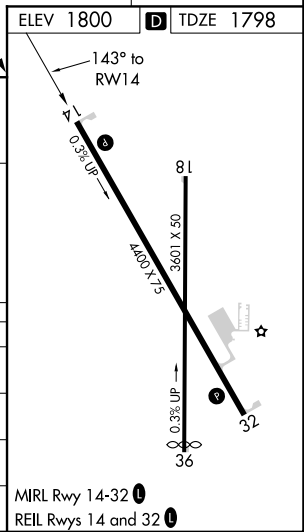
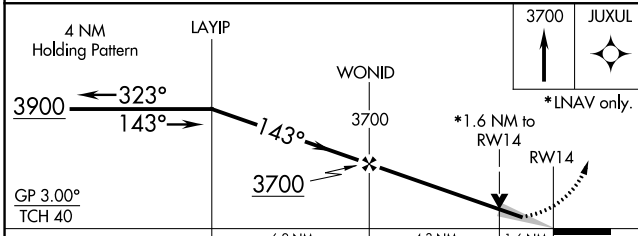
MISSED APPROACH:  
Climb to 3700 direct  
JUXUL and hold.

AWOS-3PT <b>118.45</b>	MINNEAPOLIS CENTER <b>119.4 278.8</b>	UNICOM <b>122.8 (CTAF) 0</b>
---------------------------	--	---------------------------------



NC-2, 22 FEB 2024 to 21 MAR 2024

NC-2, 22 FEB 2024 to 21 MAR 2024



CATEGORY	A	B	C	D
LPV DA	1998-1	200 (200-1)		NA
LNAV/VNAV DA	2076-1	278 (300-1)		NA
LNAV MDA	2320-1	522 (600-1)		NA
CIRCLING	2480-1 680 (700-1)	2580-1 780 (800-1)		NA

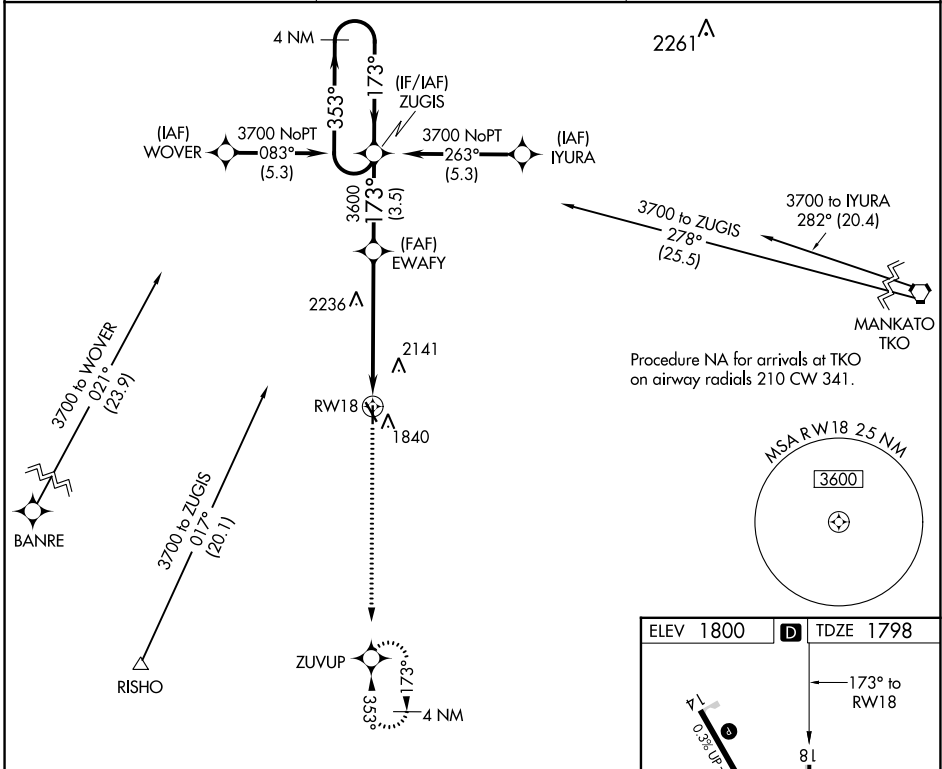
APP CRS	Rwy Idg	<b>3601</b>
<b>173°</b>	TDZE	<b>1798</b>
	Apt Elev	<b>1800</b>

# RNAV (GPS) RWY 18

SMITH CENTER MUNI (K82)

RNP APCH:	<p>Circling to Rwy 36 NA at night. Rwy 18 helicopter visibility reduction below 3/4 SM NA. VDP NA when using Concordia altimeter setting. When local altimeter setting not received, use Concordia altimeter setting: increase all MDAs 180 feet and LNAV Cats A/B and Circling Cat A visibility 1/4 SM, and Circling Cat B visibility 1/2 SM.</p>	<p>MISSED APPROACH: Climb to 3500 direct ZUVUP and hold.</p>
-----------	--	--

AWOS-3PT <b>118.45</b>	MINNEAPOLIS CENTER <b>119.4 278.8</b>	UNICOM <b>122.8 (CTAF) 1</b>
---------------------------	--	---------------------------------

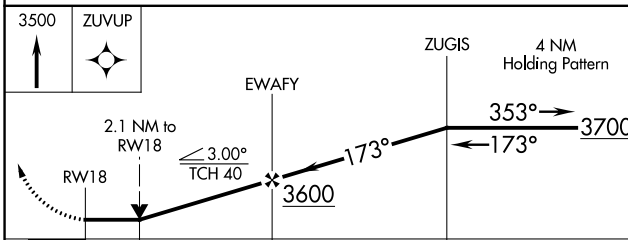


NC-2, 22 FEB 2024 to 21 MAR 2024

NC-2, 22 FEB 2024 to 21 MAR 2024

ELEV 1800	<b>D</b> TDZE 1798
-----------	--------------------

MRL Rwy 14-32 1  
REL Rws 14 and 32 1



CATEGORY	A	B	C	D
LNAV MDA	2500-1	702 (700-1)	NA	
<b>C</b> CIRCLING	2500-1 700 (700-1)	2580-1 780 (800-1)	NA	

WAAS CH <b>63135</b> <b>W32A</b>	APP CRS <b>323°</b>	Rwy Idg <b>4400</b> TDZE <b>1800</b> Apt Elev <b>1800</b>
--	------------------------	---

# RNAV (GPS) RWY 32

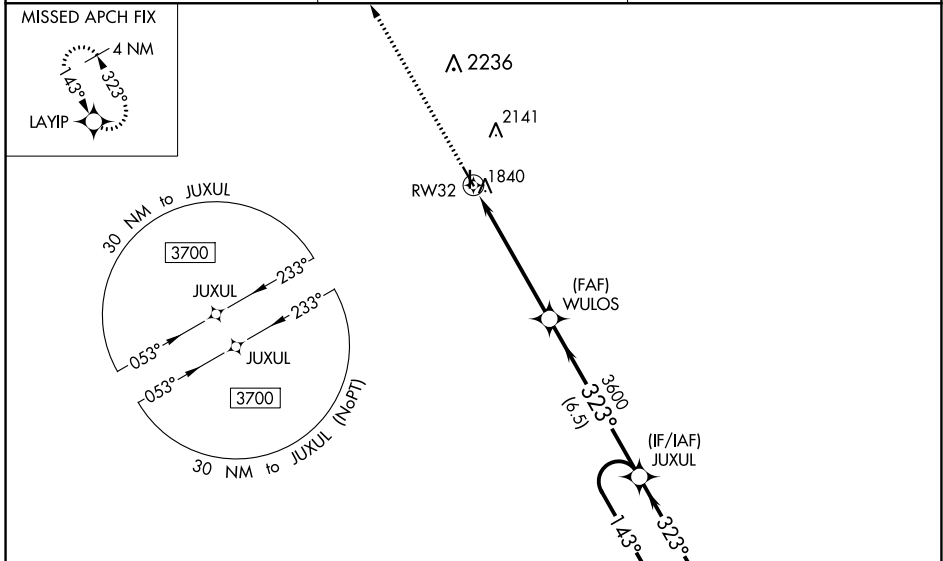
SMITH CENTER MUNI (K82)

RNP APCH-GPS.

For uncompensated Baro-VNAV systems, LNAV/VNAV NA below -18°C or above 54°C. When local altimeter setting not received, use Concordia altimeter setting and increase all DA 169 feet and all MDA 180 feet; increase LPV all Cats visibility ¼ SM, LNAV/VNAV all Cats visibility ½ SM, Circling Cat A visibility ¼ SM and Circling Cat B visibility ½ SM. Baro-VNAV and VDP NA with Concordia altimeter setting. Circling Rwy 36 NA at night.

MISSED APPROACH: Climb to 3900 direct LAYIP and hold.

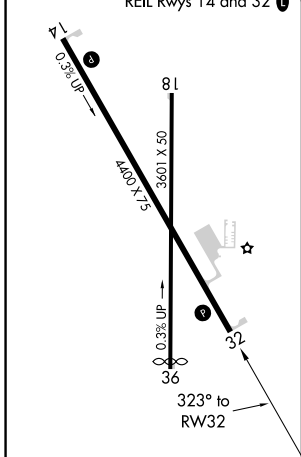
AWOS-3PT <b>118.45</b>	MINNEAPOLIS CENTER <b>119.4 278.8</b>	UNICOM <b>122.8</b> (CTAF) <b>0</b>
---------------------------	--	--



NC-2, 22 FEB 2024 to 21 MAR 2024

NC-2, 22 FEB 2024 to 21 MAR 2024

ELEV 1800	<b>D</b> TDZE 1800
-----------	--------------------



CATEGORY	A	B	C	D
LPV DA	2000-1	200 (200-1)		NA
LNAV/VNAV DA	2050-1	250 (300-1)		NA
LNAV MDA	2300-1	500 (500-1)		NA
<b>C</b> CIRCLING	2480-1 680 (700-1)	2580-1 780 (800-1)		NA

APP CRS	Rwy Idg	<b>3500</b>
<b>353°</b>	TDZE	<b>1798</b>
	Apt Elev	<b>1800</b>

# RNAV (GPS) RWY 36

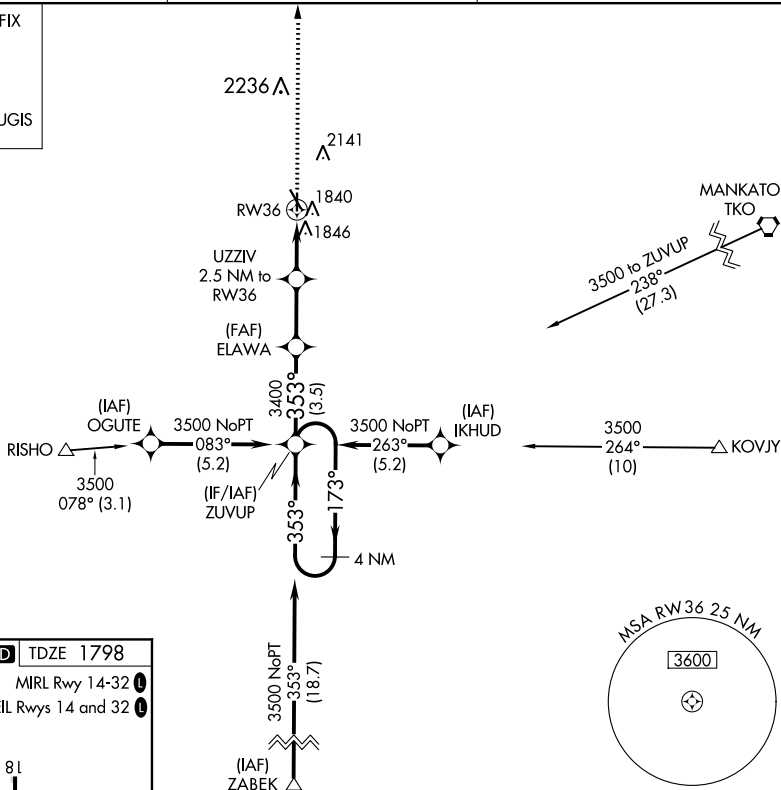
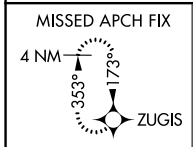
SMITH CENTER MUNI (K82)

RNP APCH.

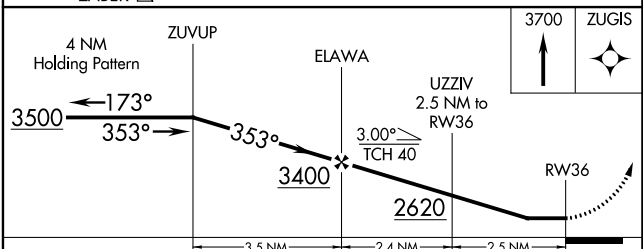
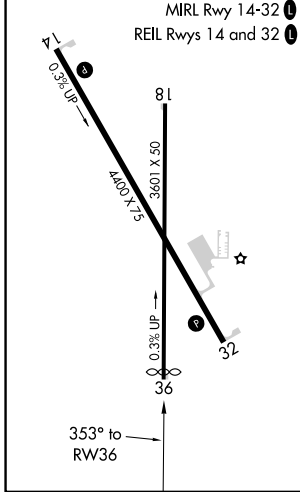
Rwy 36 helicopter visibility reduction below 1 SM NA. When local altimeter setting not received, use Concordia altimeter setting: increase all MDAs 180 feet and Circling Cat B visibility 1/2 SM. Straight-in Rwy 36 NA at night, Circling Rwy 36 NA at night.

MISSED APPROACH: Climb to 3700 direct ZUGIS and hold.

AWOS-3PT <b>118.45</b>	MINNEAPOLIS CENTER <b>119.4 278.8</b>	UNICOM <b>122.8 (CTAF) 0</b>
---------------------------	--	---------------------------------



ELEV 1800	<b>D</b> TDZE 1798
-----------	--------------------



CATEGORY	A	B	C	D
LNNAV MDA	2100-1	302 (300-1)		NA
<b>C</b> CIRCLING	2300-1 500 (500-1)	2580-1 780 (800-1)		NA

NC-2, 22 FEB 2024 to 21 MAR 2024

NC-2, 22 FEB 2024 to 21 MAR 2024

VORTAC TKO <b>109.8</b> Chan <b>35</b>	APP CRS <b>254°</b>	Rwy Idg TDZE Apt Elev	<b>N/A</b> <b>N/A</b> <b>1800</b>
--	------------------------	-----------------------------	---

# VOR-A

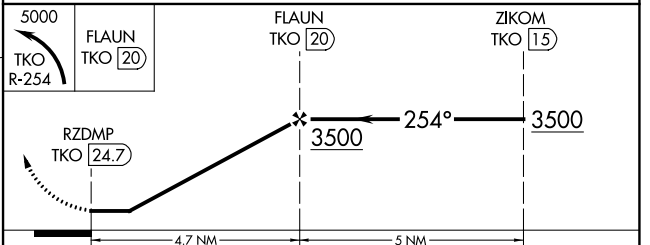
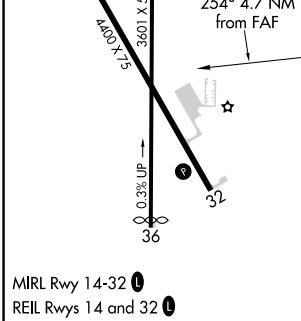
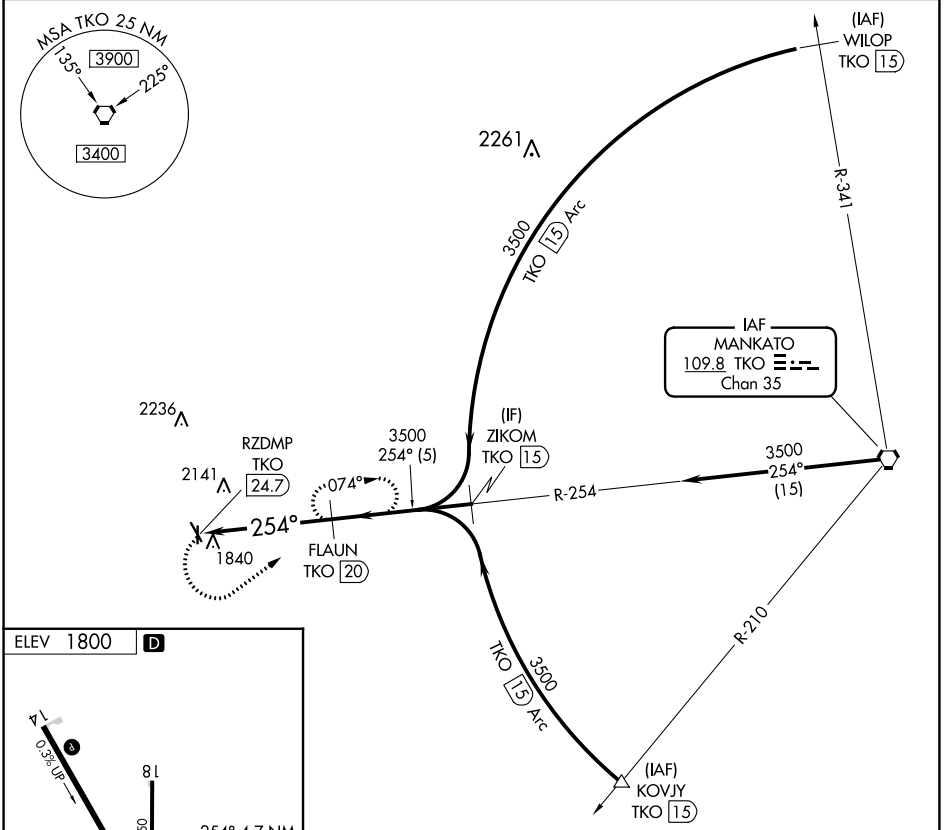
SMITH CENTER MUNI (K82)

DME required.

When local altimeter setting not received use Blosser Muni altimeter setting and increase all MDA 180 and Circling Cat B visibility to 1½ SM. Circling to Rwy 36 NA at night.

MISSED APPROACH: Climbing left turn to 5000 on TKO VORTAC R-254 to FLAUN/TKO 20 DME and hold, continue climb-in-hold to 5000.

AWOS-3PT <b>118.45</b>	MINNEAPOLIS CENTER <b>119.4 278.8</b>	UNICOM <b>122.8 (CTAF)</b>
---------------------------	--	-------------------------------



CATEGORY	A	B	C	D
<b>C</b> CIRCLING	2400-1 600 (600-1)	2580-1 780 (800-1)		NA

# VOR-A

NC-2, 22 FEB 2024 to 21 MAR 2024

NC-2, 22 FEB 2024 to 21 MAR 2024