

JETMORE, KANSAS

AL-9053 (FAA)

23110

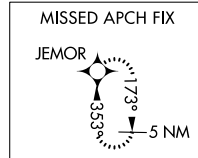
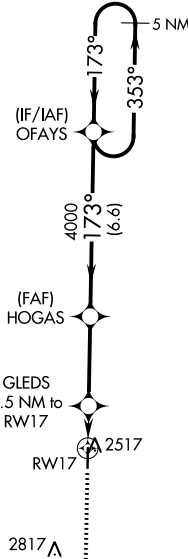
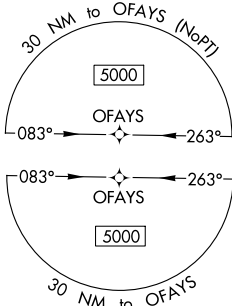
WAAS CH 42640 W17A	APP CRS 173°	Rwy Idg TDZE 2467 Apt Elev 2467
--	------------------------	---

RNAV (GPS) RWY 17

JETMORE MUNI (K79)

NA	Baro-VNAV NA. DME/DME RNP-0.3 NA. Use Dodge City Rgnl altimeter setting.	MISSED APPROACH: Climb to 5000 direct JEMOR and hold.
-----------	---	---

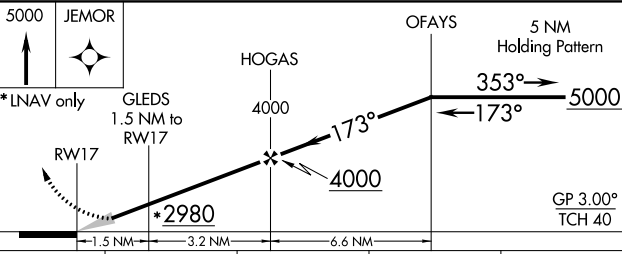
DDC ASOS 118.525	KANSAS CITY CENTER 125.2 285.425	UNICOM 122.7 (CTAF)
----------------------------	--	-------------------------------



NC-2, 22 FEB 2024 to 21 MAR 2024

NC-2, 22 FEB 2024 to 21 MAR 2024

3131



ELEV 2467	TDZE 2467
173°	
41	
4200 X 7.5	
35	

CATEGORY	A	B	C	D
LPV DA	2767-1	300 (300-1)		NA
LNAV/VNAV DA	2767-1	300 (300-1)		NA
LNAV MDA	2820-1	353 (400-1)		NA
C CIRCLING	2900-1 433 (500-1)	2920-1 453 (500-1)	2920-1½ 453 (500-1½)	NA

IIRL Rwy 17-35

JETMORE, KANSAS
Orig 27APR17

37°59'N-99°54'W

RNAV (GPS) RWY 17

JETMORE MUNI (K79)

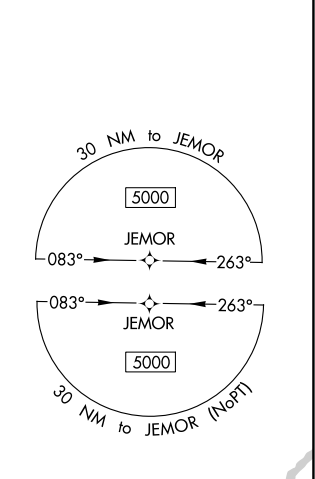
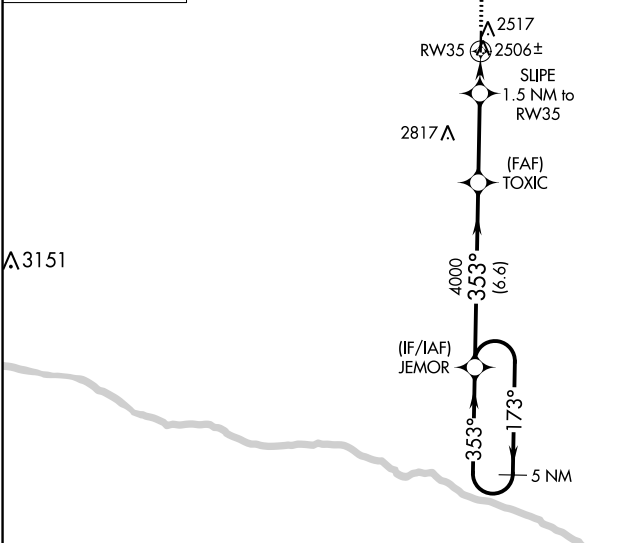
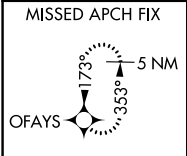
WAAS CH 86840 W35A	APP CRS 353°	Rwy Idg TDZE Apt Elev	4205 2467 2467
--	------------------------	-----------------------------	---

RNAV (GPS) RWY 35

JETMORE MUNI (K79)

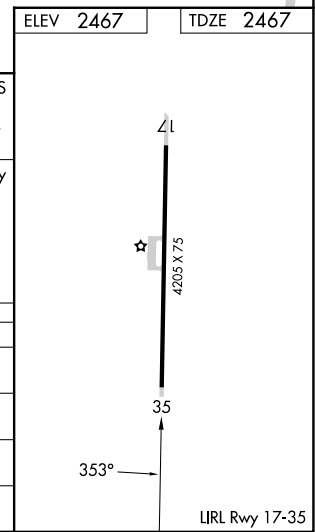
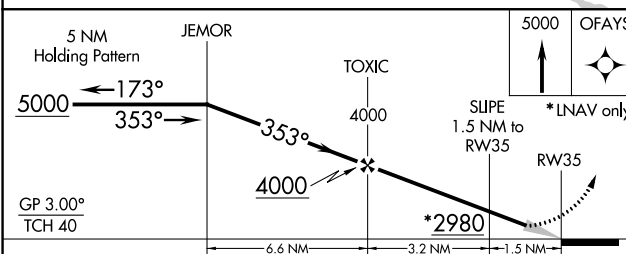
Baro-VNAV NA. DME/DME RNP-0.3 NA. Use Dodge City Rgnl altimeter setting.	MISSED APPROACH: Climb to 5000 direct OFAYS and hold.
--	---

DDC ASOS 118.525	KANSAS CITY CENTER 125.2 285.425	UNICOM 122.7 (CTAF)
----------------------------	--	-------------------------------



NC-2, 22 FEB 2024 to 21 MAR 2024

NC-2, 22 FEB 2024 to 21 MAR 2024



CATEGORY	A	B	C	D
LPV DA		2767-1 300 (300-1)		NA
LNAV/VNAV DA		2767-1 300 (300-1)		NA
LNAV MDA		2820-1 353 (400-1)		NA
CIRCLING	2900-1 433 (500-1)	2920-1 453 (500-1)	2920-1½ 453 (500-1½)	NA