

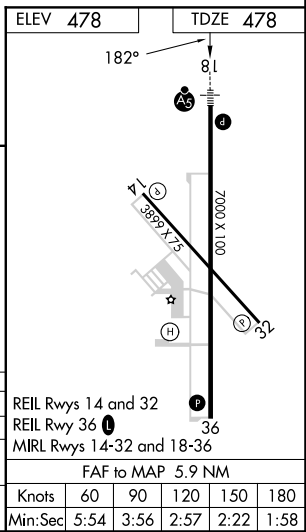
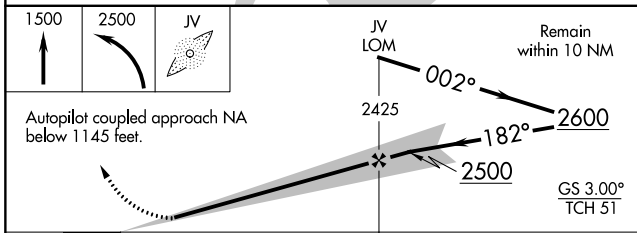
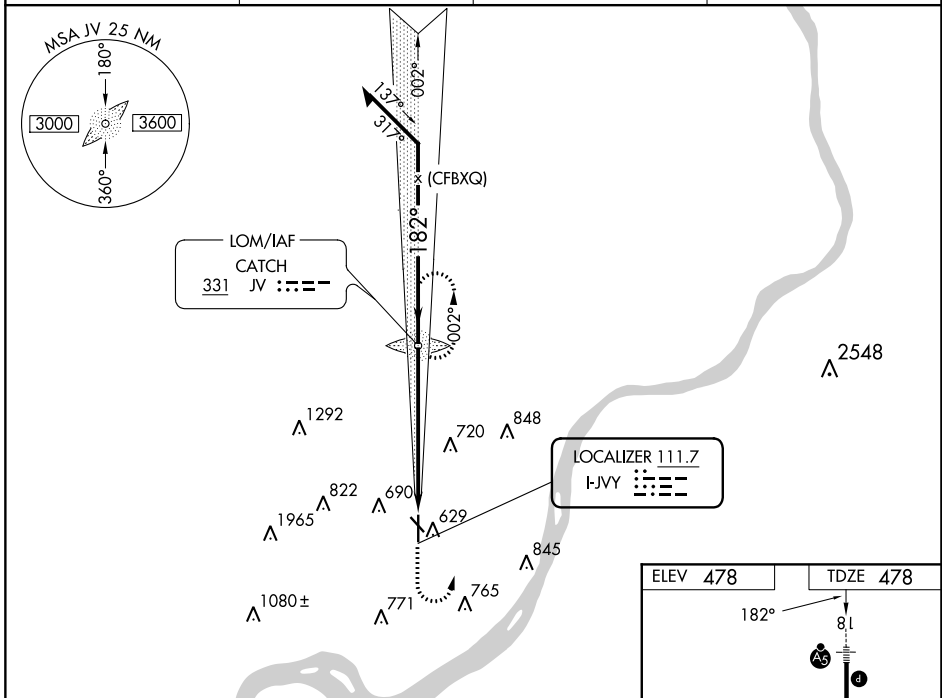
LOC I-JVY 111.7	APP CRS 182°	Rwy Idg TDZE Apt Elev	7000 478 478
---------------------------	------------------------	-----------------------------	---

ILS or LOC RWY 18

CLARK RGNL (JVY)

ADF required. RADAR required for procedure entry.		MALS R A5	MISSED APPROACH: Climb to 1500 then climbing left turn to 2500 direct CATCH LOM and hold.
Circling NA for Cat D southwest of Rws 14 and 36. Circling Rwy 14, 32 NA at night.	NA For inop ALS, increase S-LOC 18 Cats C and D visibility to 1 3/8 SM. When local altimeter setting not received, use Louisville Muhammad Ali Intl altimeter setting: increase DA to 708; increase all MDAs 40 feet, S-LOC 18 Cats C and D visibility 1/8 SM and Circling Cat C visibility 1/4 SM.		

AWOS-3 118.575	LOUISVILLE APP CON 132.075 327.0	CLINC DEL 118.05	UNICOM 122.7 (CTAF)
--------------------------	--	----------------------------	-------------------------------



CATEGORY	A	B	C	D
S-ILS 18		678-1/2	200 (200-1/2)	
S-LOC 18	980-1/2	502 (600-1/2)	980-1	502 (600-1)
CIRCLING	1000-1 522 (600-1)	1040-1 562 (600-1)	1060-1 1/2 582 (600-1/2)	1100-2 622 (700-2)

REIL Rws 14 and 32	
REIL Rwy 36	36
MIRL Rws 14-32 and 18-36	
FAF to MAP 5.9 NM	
Knots	60 90 120 150 180
Min:Sec	5:54 3:56 2:57 2:22 1:58

EC-2, 22 FEB 2024 to 21 MAR 2024

EC-2, 22 FEB 2024 to 21 MAR 2024